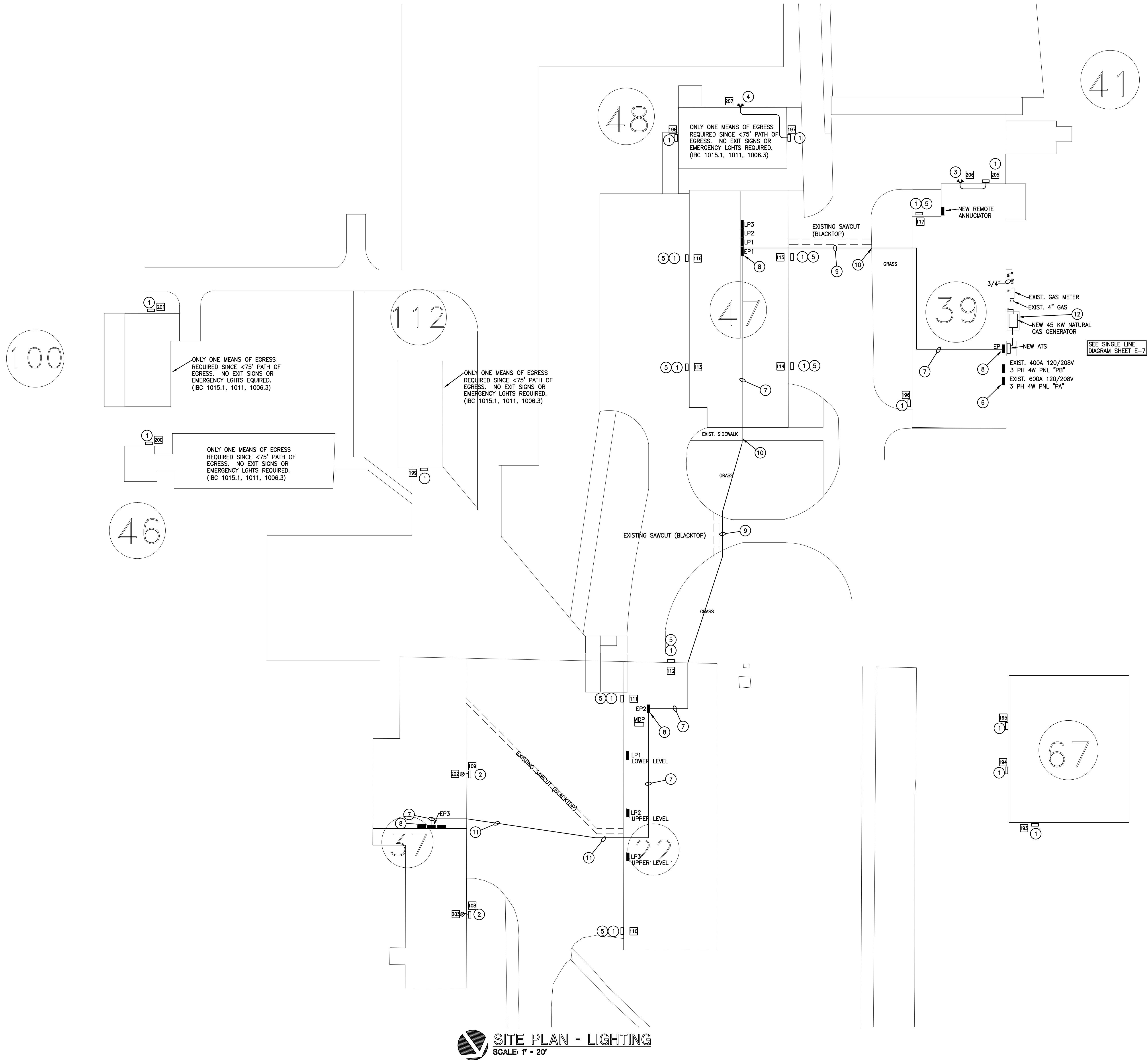


three inches = one foot
one and one half inches = one foot
one inch = one foot
three quarters inch = one foot
one half inch = one foot
three eighths inch = one foot
one quarter inch = one foot
one eighth inch = one foot
one eighth inch = one foot



CONSTRUCTION NOTES:

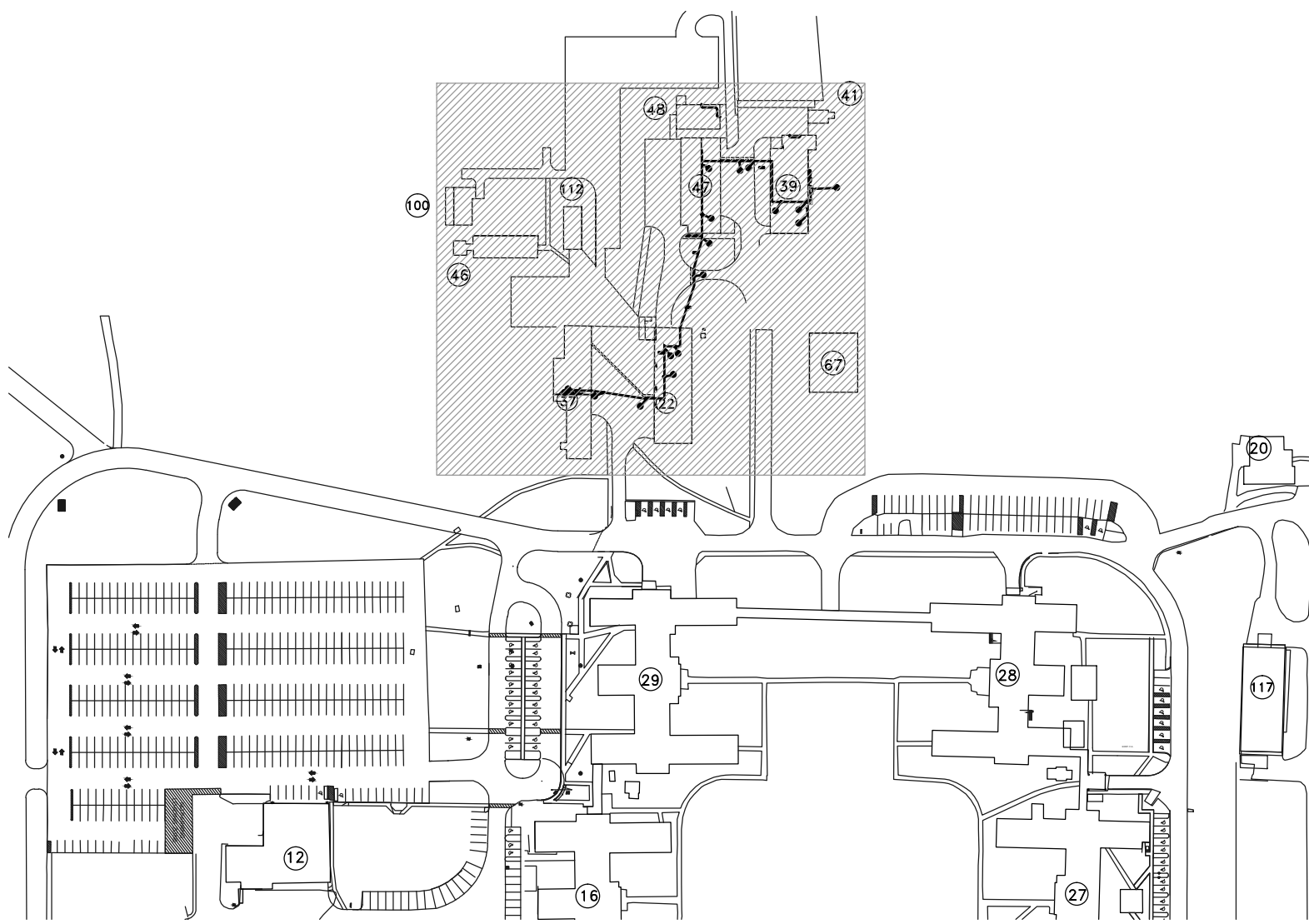
- EXISTING FIXTURE TO BE REPLACED WITH NEW LED FIXTURE.
- PROVIDE, INSTALL AND CONCEAL NEW RACEWAY & CONDUCTORS FROM NEW EMERGENCY BREAKER ENCLOSURE TO THE LOCATION OF THE NEW EXIST LIGHTS AND EXTERIOR EMERGENCY LIGHT FIXTURES.
- INSTALL NEW FLOODLIGHT FIXTURE AT 15' ABOVE GRADE FOR SECURITY. PROVIDE NEW CONDUIT AND CABLE FROM EXISTING CIRCUIT FEEDING FIXTURE 205.
- INSTALL NEW FLOODLIGHT FIXTURE JUST BELOW SOFFIT FOR SECURITY. PROVIDE NEW CONDUIT AND CABLE FROM EXISTING CIRCUIT FEEDING FIXTURE 197.
- CONNECT EXISTING CIRCUIT TO NEW BREAKERS IN NEW EMERGENCY BREAKER ENCLOSURE. CONCEAL ANY NECESSARY RACEWAYS.
- INSTALL NEW 3P-30A CIRCUIT BREAKER INTO EXISTING PANEL PA TO SERVE NEW EMERGENCY CIRCUIT. INSTALL NEW BREAKER IN SPACE PROVIDED BY SHUT DOWN OF BOILER EQUIPMENT.
- INSTALL NEW FEEDERS AS SHOWN ON THE SINGLE-LINE DIAGRAM.
- INSTALL NEW CIRCUIT BREAKER ENCLOSURE AS SHOWN ON THE SINGLE LINE DIAGRAM.
- INSTALL NEW CONDUIT AND CONDUCTORS, AS SHOWN ON THE SINGLE-LINE DIAGRAM, UNDER THE EXISTING PAVEMENT. ROUTE TO PARALLEL PREVIOUS CUT. CONTRACTOR TO REPAIR ALL DAMAGE TO DRIVE AND CURBS.
- INSTALL NEW CONDUIT AND CONDUCTORS, AS SHOWN ON THE SINGLE-LINE DIAGRAM, UNDER THE EXISTING WALK. CONTRACTOR TO REPAIR ALL DAMAGE TO WALKS AND CURBS.
- INSTALL NEW CONDUIT AND CONDUCTORS, AS SHOWN ON THE SINGLE-LINE DIAGRAM, UNDER THE EXISTING PAVEMENT. CONTRACTOR TO REPAIR ALL DAMAGE TO DRIVE AND CURBS.
- PROVIDE NEW 4" THICK RECTANGULAR CONCRETE PAD WITH MESH REINFORCING FOR THE GENERATOR TO SIT ON. PAD TO EXTEND AT LEAST 36" PAST FOOTPRINT OF GENERATOR. PROVIDE ANCHOR POINTS FOR GENERATOR AND SECURE GENERATOR UPON COMPLETION.

GENERAL NOTES

- CONTRACTOR TO PROVIDE AND INSTALL A PERMANENT, VISIBLE, AND DISCREET BRASS TAG ON EACH FIXTURE WITH THE NAME OF THE PANEL AND CIRCUIT NUMBER POWERING THE FIXTURE.
- NO INDIVIDUAL EXISTING LIGHT SOURCE IS TO BE NON-FUNCTIONAL FOR MORE THAN A 24 HOUR PERIOD. FUNCTIONAL LIGHT SOURCES MUST BE MAINTAINED FOR CAMPUS SECURITY AND SAFETY.
- CONTRACTOR IS RESPONSIBLE TO REPAIR ALL DAMAGE TO ALL GRASS AREAS, CONCRETE OR BLACKTOP CURBS, DRIVES, ETC. WHEN INSTALLING NEW UNDERGROUND CABLES. THE INTENT IS TO PUT EVERYTHING BACK TO MATCH THE EXISTING CONDITIONS.
- CONTRACTOR IS RESPONSIBLE TO "CALL BEFORE YOU DIG" WITH A LOCAL UTILITY SURVEYING COMPANY TO REDUCE THE CHANCES FOR DESTROYING ACTIVE UTILITY LINES.

LEGEND

- 1 FIXTURE NUMBER



KEY PLAN
SCALE: NONE

SITE PLAN - LIGHTING
SCALE: 1" = 20'

CONSULTANTS:		ARCHITECT/ENGINEERS:		Drawing Title		100% CONSTRUCTION DOCUMENTS					
		HAL-PE ASSOCIATES ENGINEERING SERVICES, INC. 823 Scott Blvd. Covington, KY 41011-2447 (859) 431-6083 (office) (859) 431-6136 (fax) www.halpeinc.com		EMERGENCY POWER / EXTERIOR EGRESS LIGHTING ON BLDGS. 22, 37, 39, 47		Project Title		Project Number			
				Approved for Design Concept Only		REPLACE EXTERIOR BUILDING LIGHTING		596-12-101			
						Building Number		22,37,39,47			
						Location		Drawing Number			
Revisions		Date				LEESTOWN ROAD LEXINGTON, KENTUCKY		EL004			
						Date		Checked		Drawn	
						03-28-2013		DRG		LDG	
								Dwg		5 of 9	