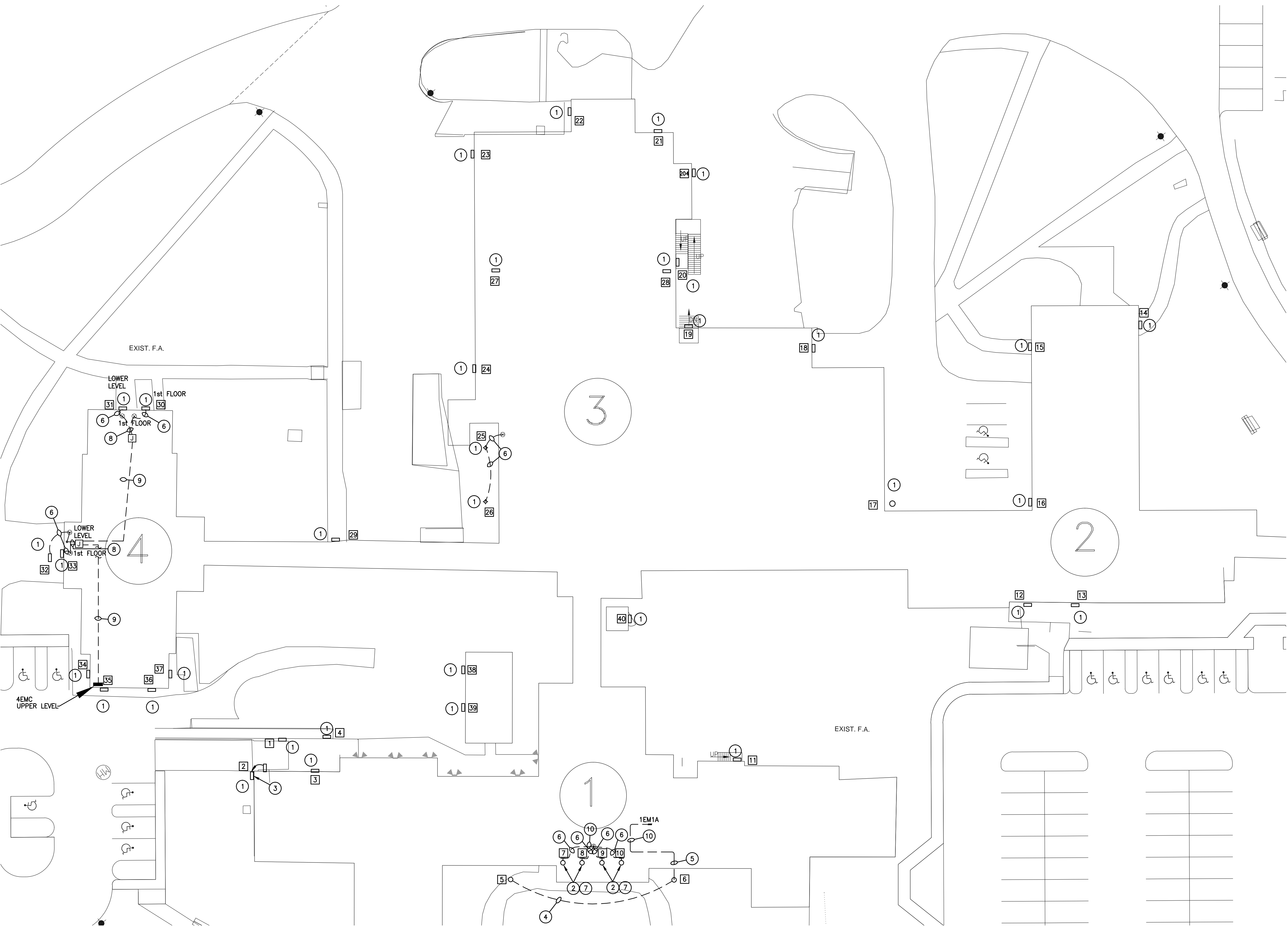


three inches = one foot
one and one-half inches = one foot
one inch = one foot
three-quarters inch = one foot
one-half inch = one foot
three-eighths inch = one foot
one-quarter inch = one foot
one-eighth inch = one foot



SITE PLAN - LIGHTING
SCALE: 1" = 20'

CONSTRUCTION NOTES:

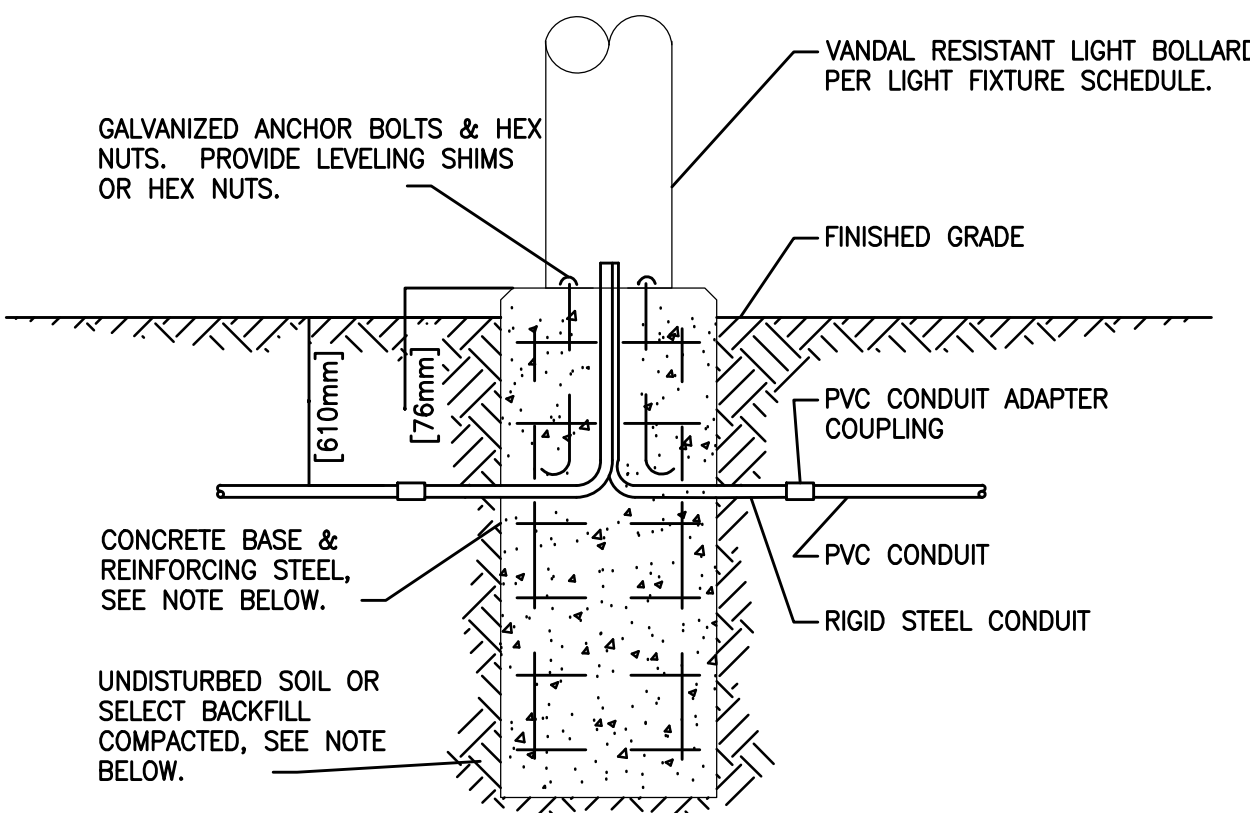
- EXISTING FIXTURE TO BE REPLACED WITH NEW LED FIXTURE.
- EXISTING FIXTURE TO BE REMOVED, CLEANED, SAND BLASTED, REPAINTED AND REINSTALLED. THE INTENT IS TO REFURBISH THE LIGHTS AND MAKE THEM LOOK LIKE ORIGINAL CONDITIONS. CONTRACTOR TO SUPPLY SYSTEM PAINTING SUBMITTAL PRIOR TO WORK. ENAMEL SYSTEM TO BE IN ACCORDANCE WITH THE SPECIFICATION 095100 "PAINTING". THE PAINT "SYSTEM" IS TO HAVE A FIVE YEAR WARRANTY.
- PROVIDE AND INSTALL NEW RACEWAY & CONDUCTORS FROM EXISTING LIGHT LOCATION TO A NEW LOCATION ON THE EXTERIOR OF THE BUILDING. THE INTENT IS TO POWER THE NEW LIGHT FIXTURE FROM THE EXISTING CIRCUIT.
- PROVIDE AND INSTALL NEW RACEWAY & CONDUCTORS TO THE NEW BOLLARDS. RUN CABLES UNDERNEATH EXISTING SIDEWALK WITHOUT DAMAGING SIDEWALK.
- PROVIDE AND INSTALL NEW UNDERGROUND RACEWAY AND CABLES ON THE EXTERIOR OF THE BUILDING IN ACCORDANCE WITH THE BOLLARD BASE DETAIL SHOWN BELOW. RUN CONDUIT INTO THE BASEMENT LEVEL OF THE BUILDING IN THE VICINITY OF EXISTING REFRIGERANT LINES. NEW CONDUIT AND CABLES TO BE INSTALLED AND TERMINATED AT PANEL 1EM1A. PROVIDE NEW 20A CIRCUIT BREAKER FOR NEW BOLLARDS.
- PROVIDE, INSTALL AND CONCEAL NEW RACEWAY & CONDUCTORS FROM EXISTING EXIT SIGN INSIDE OF DOOR TO THE LOCATION OF THE EXISTING LIGHT FIXTURE. THE INTENT IS TO ENSURE ALL LIGHT FIXTURES ARE ON AN EMERGENCY CIRCUIT.
- EXISTING HID LAMP TO BE REPLACED WITH NEW LED RETROFIT LAMP. CONTRACTOR TO BYPASS THE EXISTING BALLAST.
- PROVIDE, INSTALL AND CONCEAL NEW RACEWAY & CONDUCTORS FROM EXISTING EXIT SIGNS INSIDE OF DOORS ON LOWER LEVEL AND 1st FLOOR TO J-BOX WITH NEW EMERGENCY CIRCUIT. THE INTENT IS TO ENSURE ALL EXTERIOR LIGHT FIXTURES AND EXIT SIGNS ARE ON AN EMERGENCY CIRCUIT.
- PROVIDE, INSTALL AND CONCEAL NEW RACEWAYS, CONDUCTORS & J-BOXES FROM CKT #24 IN EXISTING EMERGENCY PANEL 4EMC LOCATED IN ELECTRIC ROOM ON 1st FLOOR TO LOCATIONS SHOWN ON DRAWING. THE INTENT IS TO ENSURE ALL EXTERIOR LIGHT FIXTURES AND EXIT SIGNS ARE ON AN EMERGENCY CIRCUIT. THE INTENT IS ALSO TO CONCEAL ALL RACEWAYS IN A NEAT AND PROFESSIONAL MANNER. COORDINATE ALL PROPOSED ROUTING PATHS AND DETAILS WITH THE COR PRIOR TO COMMENCING WORK.
- PROVIDE, INSTALL AND CONCEAL NEW RACEWAYS, CONDUCTORS & J-BOXES. THE INTENT IS ALSO TO CONCEAL ALL RACEWAYS IN A NEAT AND PROFESSIONAL MANNER. COORDINATE ALL PROPOSED ROUTING PATHS AND DETAILS WITH THE COR PRIOR TO COMMENCING WORK.

GENERAL NOTES

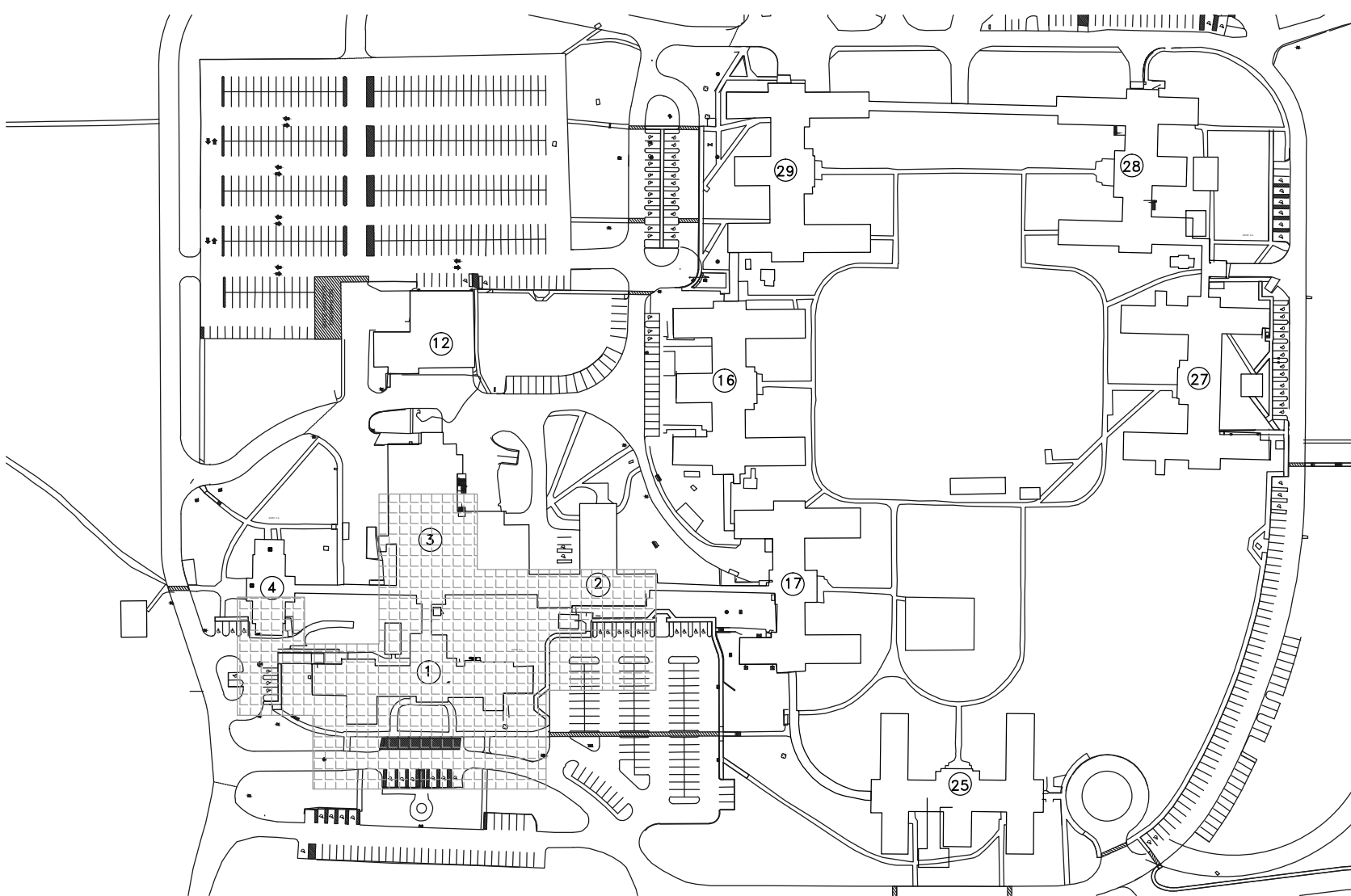
- CONTRACTOR TO PROVIDE AND INSTALL A PERMANENT, VISIBLE, AND DISCREET BRASS TAG ON EACH FIXTURE WITH THE NAME OF THE PANEL AND CIRCUIT NUMBER POWERING THE FIXTURE.
- NO INDIVIDUAL EXISTING LIGHT SOURCE IS TO BE NON-FUNCTIONAL FOR MORE THAN A 24 HOUR PERIOD. FUNCTIONAL LIGHT SOURCES MUST BE MAINTAINED FOR CAMPUS SECURITY AND SAFETY.

LEGEND

1 FIXTURE NUMBER



1 BOLLARD BASE DETAIL



KEY PLAN

SCALE: NONE

100% CONSTRUCTION DOCUMENTS

CONSULTANTS:		ARCHITECT/ENGINEERS:		Drawing Title		Project Title		Project Number	
				EXTERIOR EGRESS LIGHTING ON BLDGS. 1,2,3,4		REPLACE EXTERIOR BUILDING LIGHTING		596-12-101	
				Approved for Design Concept Only		Location		Building Number	
						LEESTOWN ROAD		1,2,3,4	
						Date		Drawing Number	
						03-28-2013		EL001	
						Checked		Dwg. 2 of 9	
						DRG			
						LDG			



Department of Veterans Affairs