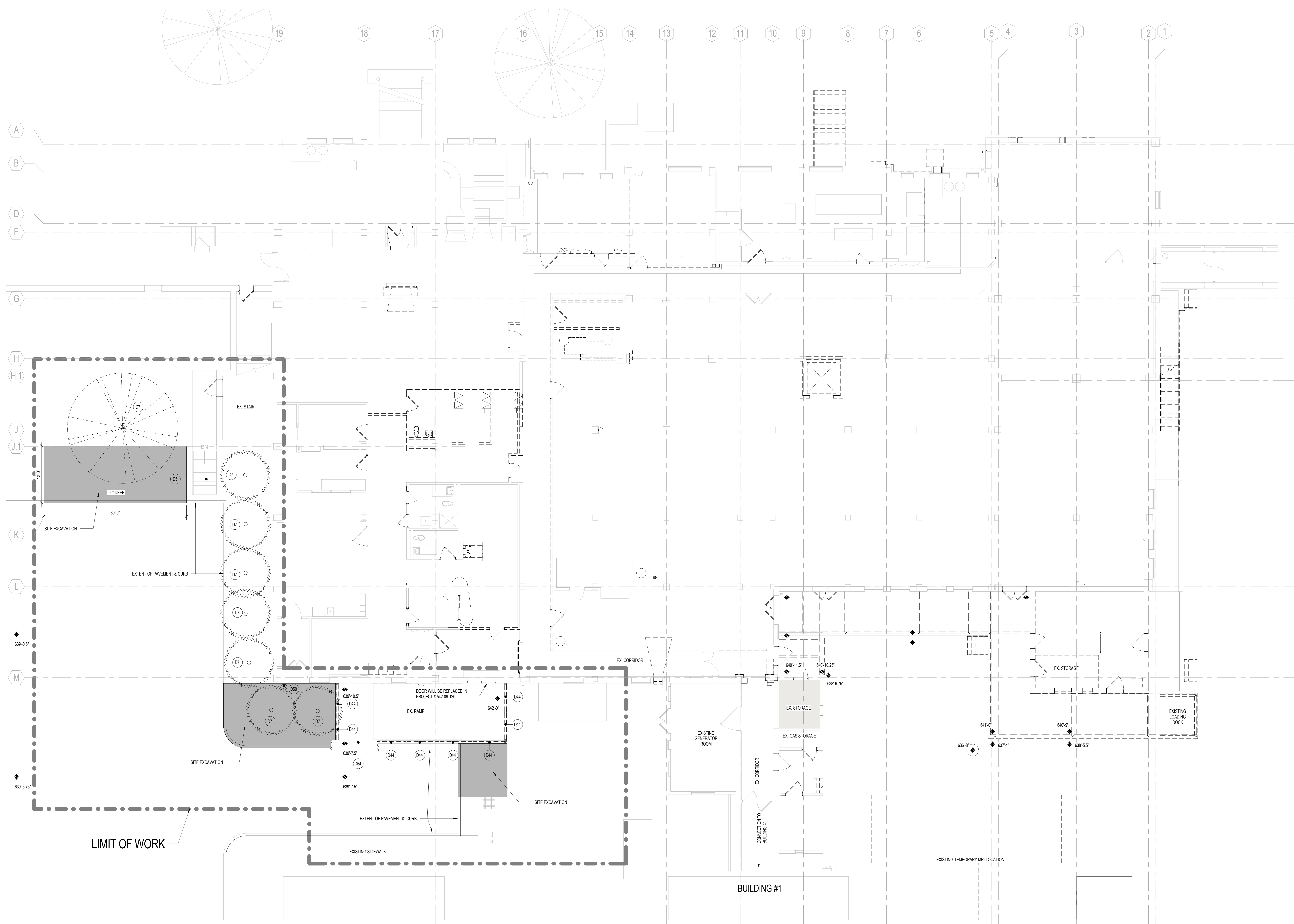


DEMOLITION KEYNOTES

- (D1) DISASSEMBLE AND REMOVE EXISTING EXTERIOR LOUVER AND WINDOW IN ITS ENTIRETY FROM INSIDE THE BUILDING. DO NOT DAMAGE EXISTING BRICK HEAD, JAMB OR SILL. REPLACE AND REPAIR ANY DAMAGED ONE WITH SIMILAR MATERIALS TO MATCH EXISTING AND PREPARE OPENING TO RECEIVE NEW.
- (D1A) ALTERNATE: DISASSEMBLE AND REMOVE EXISTING EXTERIOR LOUVER AND WINDOW IN ITS ENTIRETY FROM INSIDE THE BUILDING. DO NOT DAMAGE EXISTING BRICK HEAD, JAMB OR SILL. REPLACE AND REPAIR ANY DAMAGED ONE WITH SIMILAR MATERIALS TO MATCH EXISTING AND PREPARE OPENING TO RECEIVE NEW.
- (D2) DISASSEMBLE AND REMOVE EXISTING DOOR IN ITS ENTIRETY FROM INSIDE THE BUILDING. DO NOT DAMAGE EXISTING BRICK HEAD, JAMB OR THRESHOLD. REPLACE AND REPAIR ANY DAMAGED ONE WITH SIMILAR MATERIALS TO MATCH EXISTING AND PREPARE OPENING TO RECEIVE NEW.
- (D3) PREPARE OPENING TO BE INFILLED. REFER TO STRUCTURAL DRAWINGS.
- (D4) DEMOLISH EXISTING CONDUIT, PIPING BELOW WALL AND FLOOR SURFACE AND FILL WITH CONCRETE. PREPARE SURFACE TO RECEIVE NEW FINISH. REFER TO MEP DRAWINGS.
- (D5) DEMOLISH EXISTING RAILING, METAL PLATES, BOLTS AND ANCHORS. INFILL REMAINING HOLES IN FLOOR WITH FLOOR LEVELING MATERIAL WHERE NECESSARY.
- (D6) DEMOLISH EXISTING BRICK WALL TO INSERT NEW LOUVER. SIZE AND SHAPE TO MATCH EXISTING WINDOW TO SOUTH. PATCH AND REPAIR AND DAMAGED BRICK TO MATCH EXISTING.
- (D7) REMOVE TREES.
- (D8) DEMOLISH ROOF CURB. PREPARE ROOF TO RECEIVE NEW CONSTRUCTION.
- (D9) DEMOLISH EXISTING MILLWORK.
- (D10) DEMOLISH EXISTING PLUMBING FIXTURES.
- (D11) DEMOLISH EXISTING WALL PROTECTION (I.E. HANDRAIL, CORNER GUARD, CHAIR RAIL AND/OR BUMPER RAIL).
- (D12) REMOVE, DISASSEMBLE AND SALVAGE EXISTING WALL MOUNTED TELEVISION. TURN-OVER TO CLIENT.
- (D13) DEMOLISH EXISTING LITERATURE RACK.
- (D14) DEMOLISH EXISTING WALL BASE. REPAIR GWB FOR NEW FINISHES.
- (D15) DEMOLISH EXISTING WALL SCIENCE.
- (D16) DEMOLISH EXISTING TRANSACTION WINDOW. INFILL WITH GWB AND PREP FOR NEW FINISHES.
- (D17) DEMO EXISTING STRUCTURAL COLUMNS.
- (D18) EXISTING METAL CANOPY TO BE DEMOLISHED. INCLUDING PINS AND ATTACHMENTS TO EXISTING BRICK. FILL OPENING AND REPLACE DAMAGED BRICK TO MATCH EXISTING.
- (D19) EXISTING STEAM VENT 2' BELOW SLAB TO BE CAPPED AND RELOCATED. REFER TO MEP DRAWINGS FOR MORE INFORMATION.
- (D20) INFILL EXISTING ELEVATOR PIT WITH CRUSHED STONE, COMPACT IN LIFTS & PREPARE FOR NEW SLAB. REFER TO STRUCTURAL DRAWINGS.
- (D21) EXISTING ROOF TO BE DEMOLISHED. PATCH & REPAIR EXISTING EXTERIOR BRICK WALL.
- (D22) DEMOLISH EXISTING SKYLIGHT COVERS. PREPARE OPENINGS AND CURBS TO RECEIVE NEW SKYLIGHTS.
- (D23) SAW CUT EXISTING SLAB AND PREP OPENING FOR SHIPS LADDER.
- (D24) DEMOLISH CMU INFILLED WINDOW OPENING. PATCH & REPAIR JAMBS. PREPARE OPENING TO RECEIVE NEW SILL & WINDOW.
- (D25) REMOVE ALL LOOSE EXISTING PLASTER.
- (D26) DEMOLISH EXISTING HOUSEKEEPING PAD FLUSH WITH CONCRETE FLOOR SLAB. GRIND TO SMOOTH FLUSH SURFACE AND PREPARE TO RECEIVE NEW FINISH. DEMOLISH SKEFFIT AND FRAMEWORK.
- (D27) GRIND SMOOTH & CLEAN STRUCTURAL BEAMS ABOVE. PREPARE FOR NEW FINISH.
- (D28) REMOVE L-BRACKET. PATCH AND REPAIR EXPOSED BRICK AND MORTAR TO MATCH EXISTING TO MAINTAIN WEATHERPROOF BARRIER.
- (D29) PATCH OPENING IN CONCRETE ROOF SYSTEM ABOVE. TO MATCH EXISTING CONSTRUCTION TO MAINTAIN FIRE RATING AND WEATHERPROOF BARRIER.
- (D30) DEMOLISH EXISTING RAIN LEADER AND EXTERIOR PENETRATION. PATCH AND REPAIR EXTERIOR WALL TO MATCH EXISTING AND MAINTAIN WEATHERPROOF BARRIER.
- (D31) DEMOLISH EXISTING LIGHT FIXTURE, ASSOCIATED CONDUIT, AND ACCESSORIES. PATCH AND REPAIR HOLES AND CRACKS IN EXISTING WALL. REMOVE ALL MISCELLANEOUS WALL ANCHORS, BOLTS, WINDOW TREATMENTS. PATCH AND REPAIR WALL FOR NEW FINISHES.
- (D32) GRIND AND SAND BLOCK WALL TO SMOOTH FLUSH SURFACE. PATCH AND REPAIR WALL TO RECEIVE NEW FINISHES.
- (D33) CLEAN AND REPAIR CEILING FOR NEW FINISHES. PATCH HOLES TO MAINTAIN FIRE RATED SYSTEM. DEMOLISH ALL EXCESS HANGERS. HANGER BRACKETS INSET IN SLAB TO REMAIN.
- (D34) DEMOLISH PLASTER LATH FINISH. REMOVE NON-ACTIVE METAL PIPES AND CONDUITS WITH ASSOCIATED HANGERS.
- (D35) TRANSFER GRILLE AND THROUGH PIPES TO BE DEMOLISHED AND PREPARED FOR REINSTALLATION TO MEET FIRE RATED UL ASSEMBLY.
- (D36) GRIND SMOOTH CONCRETE FLOOR SLAB. CLEAN, PATCH AND REPAIR TO RECEIVE NEW FLOOR.
- (D37) CAP-OFF PLUMBING FIXTURE. INFILL PENETRATIONS AND WALL TO GAIN NEW FIRE RATING.
- (D38) DEMOLISH EXISTING STAIR AND PARTITIONS.
- (D39) GRIND AND SAND BLOCK WALL TO SMOOTH FLUSH SURFACE. PATCH AND REPAIR WALL TO RECEIVE DAMPROOFING AND NEW FINISHES. PATCH WALL TO MATCH EXISTING AND MAINTAIN WEATHERPROOF BARRIER.
- (D40) DEMOLISH TILE AND LEAVE PILASTER.
- (D41) DEMOLISH WATER RADIIATOR.
- (D42) DEMOLISH EXISTING GLASS WINDOWS AND STRUCTURAL STEEL TUBES. PATCH AND REPAIR CONCRETE PEDISTAL.
- (D43) DEMOLISH CLEAN-OUT PIPE.
- (D44) SAWCUT PIPE TO BE FLUSH WITH SLAB. FILL OPENING WITH CONCRETE TO A SMOOTH SURFACE AND PREPARE TO RECEIVE NEW FINISH.
- (D45) DEMOLISH DOOR FRAME.
- (D46) DEMOLISH MECHANICAL DUCT AND GYPSUM BOARD ENCLOSURE ABOVE. PATCH AND REPAIR CEILING TO MATCH EXISTING.
- (D47) DEMOLISH EXISTING METAL WIRE FENCE AND POSTS.
- (D48) EXISTING STANDPIPE, TO REMAIN.
- (D49) EXISTING DOUBLE CONCRETE SLAB, TO REMAIN.
- (D50) NO DEMOLITION IN ROOM, N.I.C.
- (D51) EXISTING ICRA BARRIER AND DOOR TO REMAIN IN PLACE UNTIL NEW CORRIDOR WALL IS IN PLACE TO ICRA STANDARDS.
- (D52) DEMOLISH EXISTING CANVAS AWNING AND STRUCTURAL STEEL FRAME. SAWCUT STEEL, TO BE FLUSH WITH PAVEMENT.
- (D53) DEMOLISH EXISTING EXTERIOR CONCRETE STAIR.
- (D54) REMOVE DOOR AND FRAME, INFILL WITH BRICK TO MATCH EXISTING.
- (D55) REMOVE DOOR, PATCH AND PAINT FRAME.
- (D56) DEMOLISH EXISTING BOULSTER AND FOOTING. REFER TO STRUCTURAL DRAWINGS FOR MORE INFORMATION.



(F) Copy of FIRST FLOOR DEMOLITION PLAN
1/8" = 1'-0"

CONSULTANTS:

<p>Architects-Interiors ARRAY healthcare facilities solutions</p> <p>2520 Renaissance Blvd Suite 110 King of Prussia, PA 19406 Tel: (610) 270-6599 Fax: (610) 270-6595</p>	<p>Structural Engineer WZG</p> <p>180 W. Ridge Pike Limerick, PA 19468 Tel: (215) 329-5559</p>	<p>MEP Engineer APOGEE Engineering & Construction</p> <p>6325 Woodside Court Columbia, MD 21046 Tel: (919) 858-7420</p>	<p>Fire Protection Harrington Group, Inc.</p> <p>7508 E. Independence Blvd Suite 116 Charlotte, NC 28227 Tel: (704) 531-9077 Fax: (704) 567-7087</p>
--	--	---	--

PROJECT MANAGER:

Bray Mooney Consulting

410 East 21st Street
Chester, PA 19013
Tel: (215) 518-0864
Fax: (484) 428-1547

Project Number: 3545
Scale: As indicated

Drawing Title: **FIRST FLOOR DEMOLITION PLAN**

Approved: Project Director

Project Title: **BUILDING 3 OUTPATIENT MEDICAL SUITES AND LAB**

Location: 1400 Black Horse Hill, Coatesville, PA

Date: 04-23-2012
Checked: JD
Drawn: JM

VA Project Number: 542-09-121
Building Number: 03
Drawing Number: AD110.1
Dwg. of

Office of Facilities Management
Department of Veterans Affairs

BID DOCUMENT

Scale indicators on the left margin:
 three inches = one foot
 one and one half inches = one foot
 one inch = one foot
 three quarters inch = one foot
 one half inch = one foot
 three eighths inch = one foot
 one quarter inch = one foot
 one eighth inch = one foot