

**FINISH PLAN GENERAL NOTES**

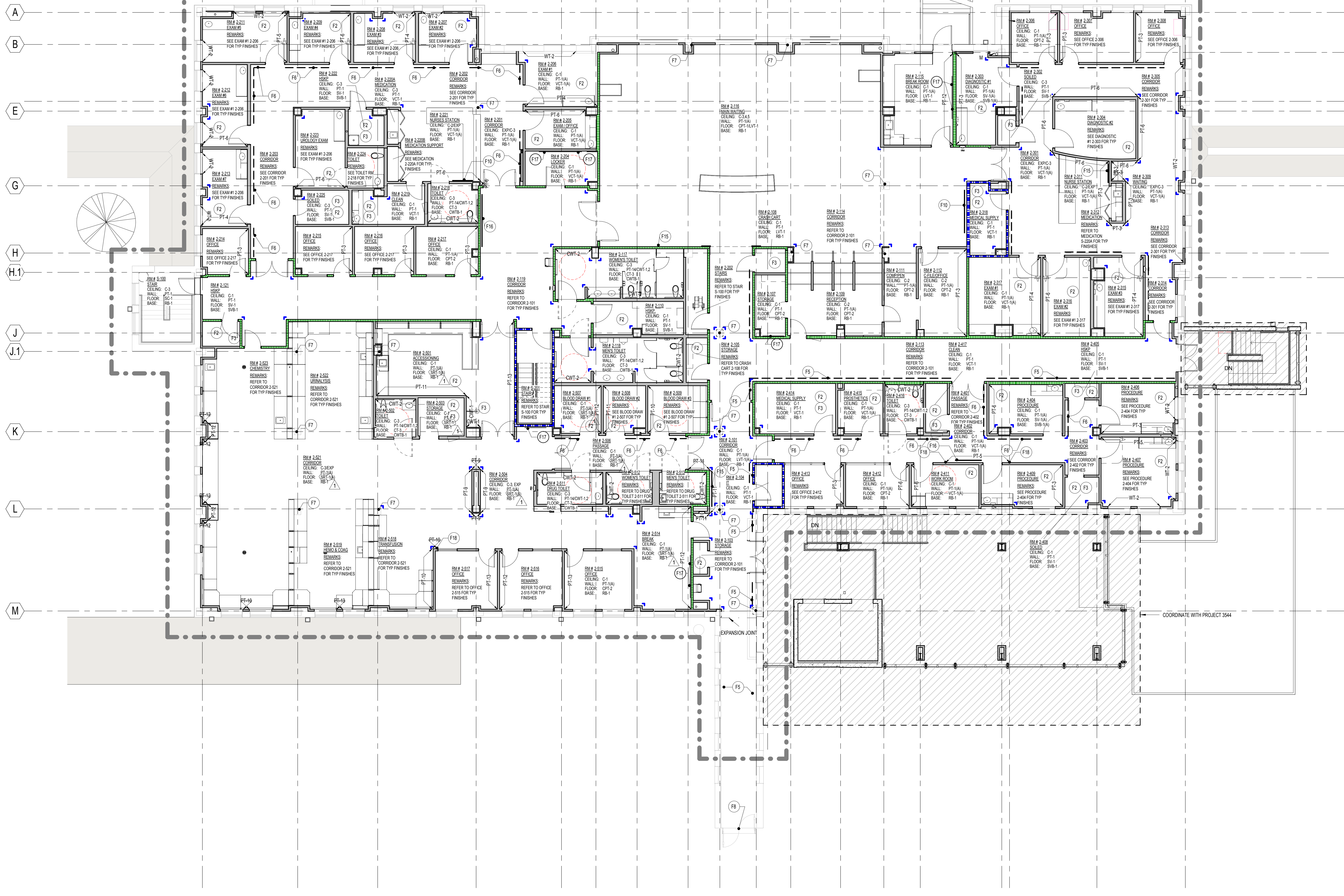
- REFER TO SHEET AE124 FOR FLOOR PATTERN PLANS.
  - REFER TO SHEET AE174 FOR INTERIOR FINISH SCHEDULE.
- FINISH GENERAL NOTES**
- WHEN AN (A) IS IN THE FINISH TAG IT REFERS TO AN ACCENT FINISH. SEE THE FINISH / FLOOR PATTERN PLANS OR ELEVATIONS FOR TYPE AND LOCATION.
  - TYPICAL ROOM FINISH ARE C-1 / PT-1A / PWP-1 / VCT-1A / RB-1.
  - HANDRAIL, CHAIR RAIL AND BUMPER RAIL TO RUN CONTINUOUSLY FROM DOOR BACK TO DOOR BUCK, TERMINATING AT ALL VERTICAL INTERRUPTIONS.
  - ALL CORNER GUARDS TO BE CG-1, U.N.O., THROUGHOUT LIMIT OF WORK. SEE FINISH SCHEDULE FOR MORE INFORMATION.
  - FLASH PATCH FLOORING AS REQUIRED TO PROVIDE A FLUSH TRANSITION AT ALL DIFFERENT FLOORING MATERIALS.
  - ALL GWB SOFFITS ARE TO BE PAINTED. FASDA AND UNDERSIDE ARE TO MATCH PROVIDE FRY REGLET REVEALS AS A MATERIAL OR COLOR TRANSITION. GWB SOFFITS ARE NEVER TO RECEIVE VINYL WALL COVERING.
  - ALL FURNITURE AND FURNITURE PANELS ARE N.I.C., UNLESS NOTED OTHERWISE.
  - THE CONTRACTOR SHALL NOTIFY THE ARCHITECT OF ITEMS REQUIRING FINISH SELECTIONS THAT ARE NOT CLARIFIED IN THE CONTRACT DOCUMENTS.
  - HEAT WELDED SHEET VINYL'S SHALL HAVE WELDING ROD COLOR SELECTED BY OWNER OR ARCHITECT.
  - CEILING ACCESS PANELS, HVAC DIFFUSERS/GRILLES SHALL BE WHITE UNLESS NOTED OTHERWISE.
  - ELECTRICAL PANELS, ETC. SHALL BE PAINTED TO MATCH ADJACENT WALL COLOR UNLESS NOTED OTHERWISE.
  - PAINT EXPOSED CEILINGS WITH SHERWIN WILLIAMS PRO INDUSTRIAL HI-BUILD WATER BASE CATALYZED EPOXY COATING IN SHERWIN WILLIAMS 700Z DOWNY.

**FINISH KEYNOTES**

- (H) ALL FINISHES ARE TO REMAIN EXISTING.
- (F2) INSTALL PWP-1 ON ALL WALLS WITHOUT CASEWORK TO HEIGHT OF 4'-0" A.F.F.
- (I) INSTALL BG-1 ON ALL WALLS WITHOUT CASEWORK. CONTRACTOR TO PROVIDE BLOCKING.
- (FA) BUMPER GUARD, BG-1. CONTRACTOR TO PROVIDE BLOCKING.
- (FH) HANDRAIL, HR-1. CONTRACTOR TO PROVIDE BLOCKING.
- (FI) HANDRAIL, HR-2. CONTRACTOR TO PROVIDE BLOCKING.
- (FJ) COLUMN TO HAVE SPC-1 FINISH.
- (FK) EXISTING DOOR(S) TO BE PAINTED, PT-2.
- (DL-1) MOUNTED ON 3/4" FINISHED MDF WITH B+N INDUSTRIES MINI WALL FIXED PANEL SUPPORTS, 3/4" DIAMETER. MDF PANELS TO BE MOUNTED TO PARTITION WITH B+N INDUSTRIES PUCKS FOR ACCESS TO ELECTRICAL PANELS.
- (DL-2) INSTALLED WITH B+N INDUSTRIES MINI WALL FIXED PANEL SUPPORTS, 3/4" DIAMETER. PARTITION BEHIND TO BE PAINTED WITH AN ACCENT COLOR.
- (DL-3) WOOD HANDRAIL MOUNTED ON GKD HANDED WIRE MESH HANDRAIL SYSTEM.
- (FL) FLOOR LINGERS WILL BE AN APPLIED TOPPING THROUGHOUT THE ENTIRE FLOOR. A SURVEY OF ALL FLOOR SURFACES SHALL BE MADE BY THE GENERAL CONTRACTOR FOR THE PURPOSE OF DETERMINING OUT-OF-LEVEL CONDITIONS THAT WOULD PROMPT THE LEVEL PLACEMENT OF FLOORING, FILES OR FURNITURE, AND/OR INTERFERE WITH THE INSTALLATION OF ARCHITECTURAL OR MILLWORK ELEMENTS.
- (FV) CONTRACTOR SHALL BE RESPONSIBLE FOR LEVELING FLOOR TO COVER MILLWORK TOLERANCES. FLOOR FINISHES, ETC.
- (FH) HANDRAIL, HR-3. CONTRACTOR TO PROVIDE BLOCKING.
- (DL-2) INSTALLED WITH B+N INDUSTRIES MINI WALL FIXED PANEL SUPPORTS, 3/4" DIAMETER. PARTITION BEHIND TO BE PAINTED WITH AN ACCENT COLOR.
- (DL-3) INSTALLED WITH B+N INDUSTRIES MINI WALL FIXED PANEL SUPPORTS, 3/4" DIAMETER. PARTITION BEHIND TO BE PAINTED WITH AN ACCENT COLOR.
- (F16) 4 x 4 FABRIC WRAPPED PANEL, PWP-1 ON 1/2" HOMASOTE INSTALLED WITH TWO CLIPS.
- (F18) PROVIDE A NON-VENTED FRY REGLET REVEAL TO TERMINATE COLOR OR FINISH, DRW-25-25.
- (F19) GYPSUM WALLBOARD SURFACES WITHIN SKYLIGHT TO BE PAINTED, PT-1, U.N.O.
- (F20) CG-3
- (F21) EXISTING METAL PLATE TO BE CLEAN AND REFINISHED.

**INTERIOR FINISH MATERIAL CODES**

CODE	MATERIALS
AWP	ARCHITECTURAL WALL PANELS
BG	BUMPER GUARD
C	CEILING
CC	CUBICLE CURTAIN FABRIC
CG	CORNER GUARD
CPT	CARPET
CT	CERAMIC FLOOR TILE
CTB	CERAMIC FLOOR TILE BASE
CWT	CERAMIC WALL TILE
CWTB	CERAMIC WALL TILE BASE
CG	DECORATIVE GLASS
EP	EPOXY PAINT
EPF	SEAMLESS EPOXY FLOOR
EFB	EPOXY FLOOR INTEGRAL BASE
EM	ENTRANCE MAT
EX	EXISTING
EXP	EXPOSED STRUCTURE
FWP	FABRIC WRAPPED PANEL
HR	HAND RAIL
KP	KICK PLATE
LVT	LUXURY VINYL TILE
PE	POURED EPOXY FLOOR
PFB	POURED EPOXY WALL BASE
PL	PLASTIC LAMINATE
PT	PAINT
PWP	PLASTIC WALL PROTECTION
RB	RUBBER BASE
S	STAIN/COLORWASH
SC	SEALED CONCRETE
SC	SEMI-GLOSS PAINT
SPC	SPECIALTY PAINT COATING
SSP	SOLID SURFACE POLYMER
SRT	SOLID RUBBER TILE
SV	SEAMLESS VINYL FLOORING
SVB	INTERNAL, SEAMLESS VINYL BASE
VCT	VINYL COMPOSITION TILE
WT	WINDOW TREATMENT



SECOND FLOOR FINISH PLAN  
1/8" = 1'-0"

**CONSULTANTS:**

<p>Architects-Interiors <b>ARRAY</b> Northshore facilities solutions 2520 Renaissance Blvd Suite 110 King of Prussia, PA 19406 Tel: (610) 270-5599 Fax: (610) 270-5595</p>	<p>Structural Engineer <b>WZG</b> 180 W. Ridge Pike Limerick, PA 19468 Tel: (214) 329-5559</p>	<p>MEP Engineer <b>APOGEE</b> 6325 Woodside Court Columbia, MD 21046 Tel: (919) 858-7420</p>	<p>Fire Protection <b>Harrington Group, Inc.</b> 7508 E. Independence Blvd Suite 116 Charlotte, NC 28227 Tel: (704) 531-9077 Fax: (704) 567-7087</p>
--	--	--	--

**PROJECT MANAGER:**

**Bray Mooney Consulting**

410 East 21st Street  
Chester, PA 19013  
Tel: (215) 518-0864  
Fax: (484) 428-1547

Project Number <b>3545</b>	Scale As indicated	Drawing Title <b>SECOND FLOOR FINISH PLAN</b>	Project Title <b>BUILDING 3 OUTPATIENT MEDICAL SUITES AND LAB</b>	VA Project Number <b>542-09-121</b>
		Approved: Project Director	Location <b>1400 Black Horse Hill, Coatesville, PA</b>	Building Number <b>3</b>
		Date <b>04-23-2012</b>	Checked <b>WC</b>	Drawn <b>JTW</b>
		Revisions	Drawing Number <b>AE123</b>	Office of Facilities Management
		Date	Dwg. 14 of 79	Department of Veterans Affairs

FULLY SPRINKLERED  
BID DOCUMENT

three inches = one foot  
 one and one half inches = one foot  
 one inch = one foot  
 three quarters inch = one foot  
 one half inch = one foot  
 three eighths inch = one foot  
 one eighth inch = one foot