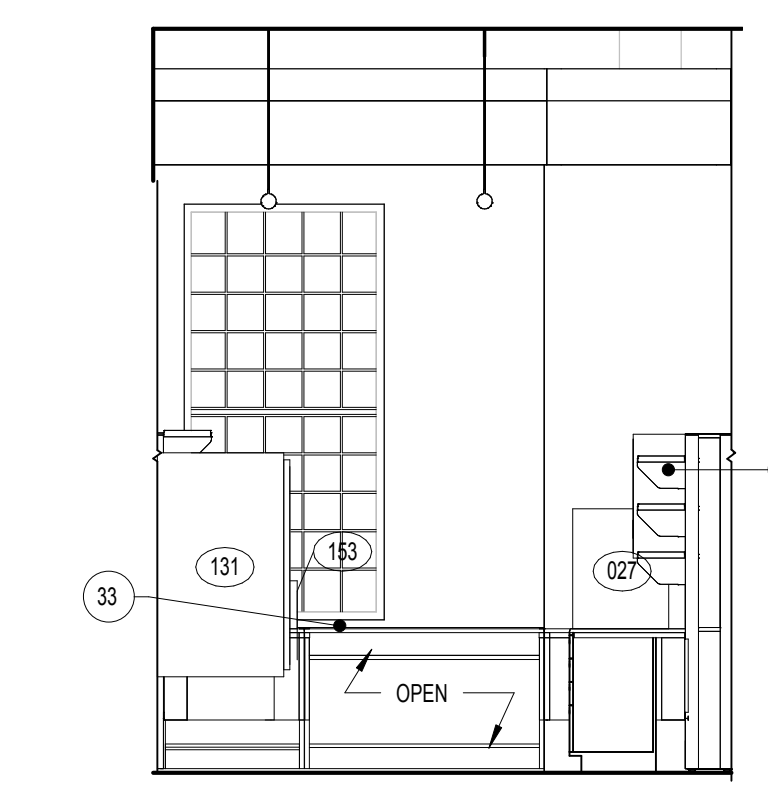
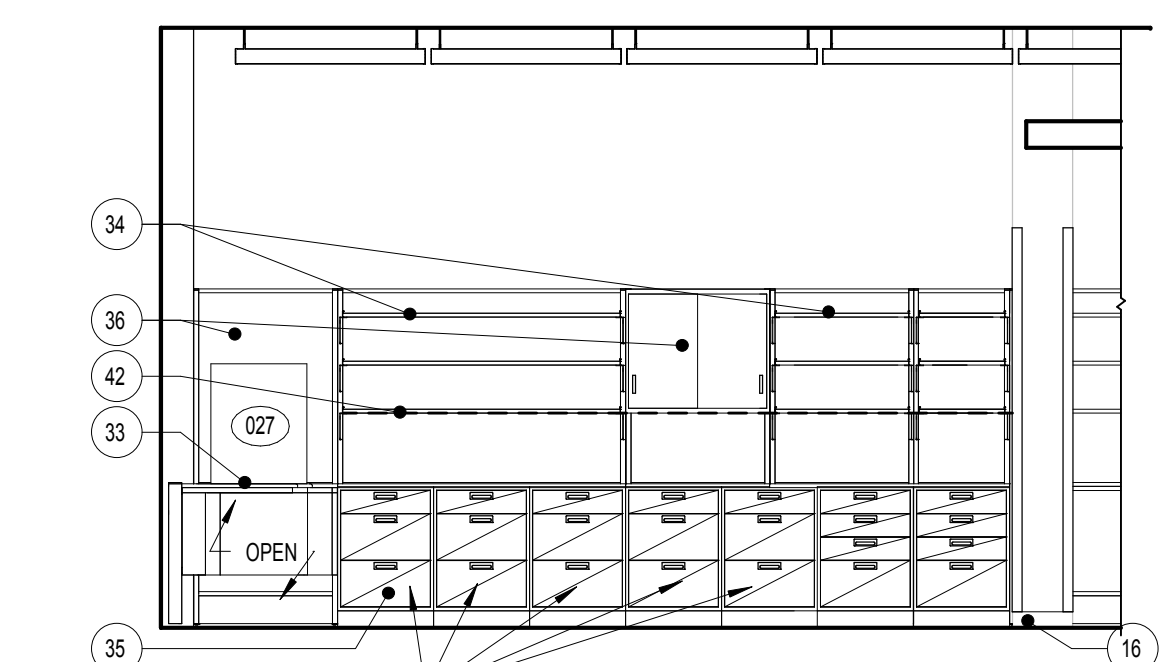


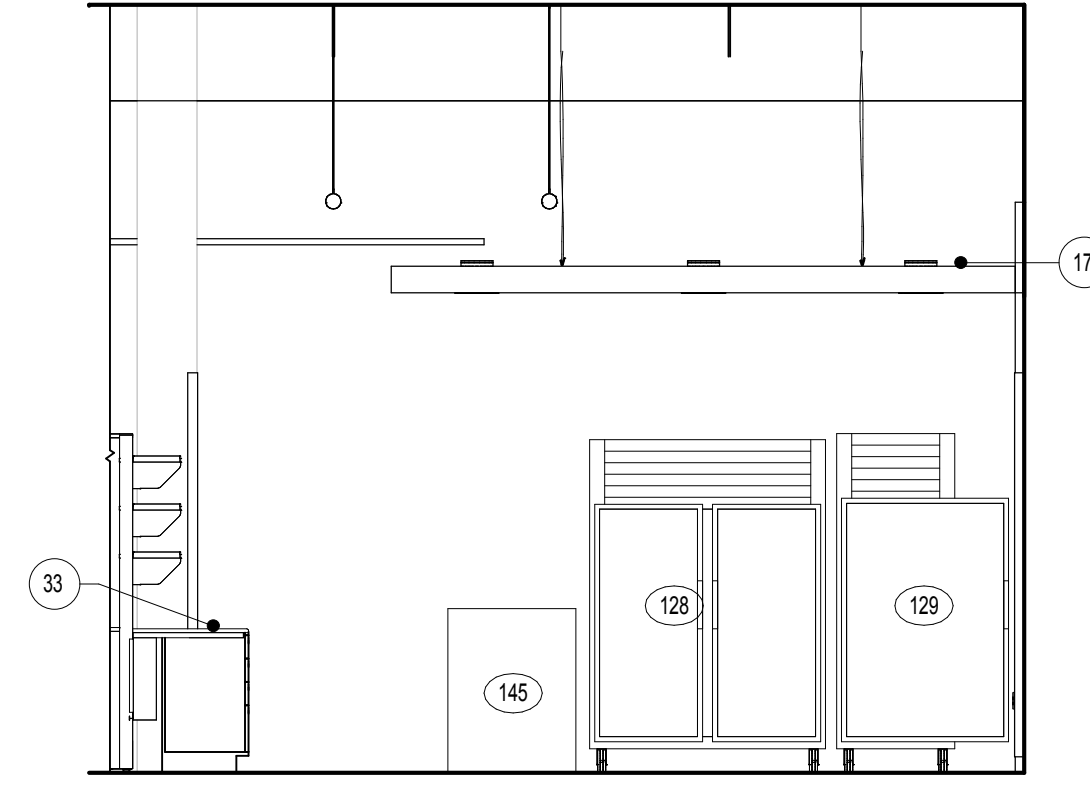
D1 ENLARGED PLAN - LAB
1/4" = 1'-0"



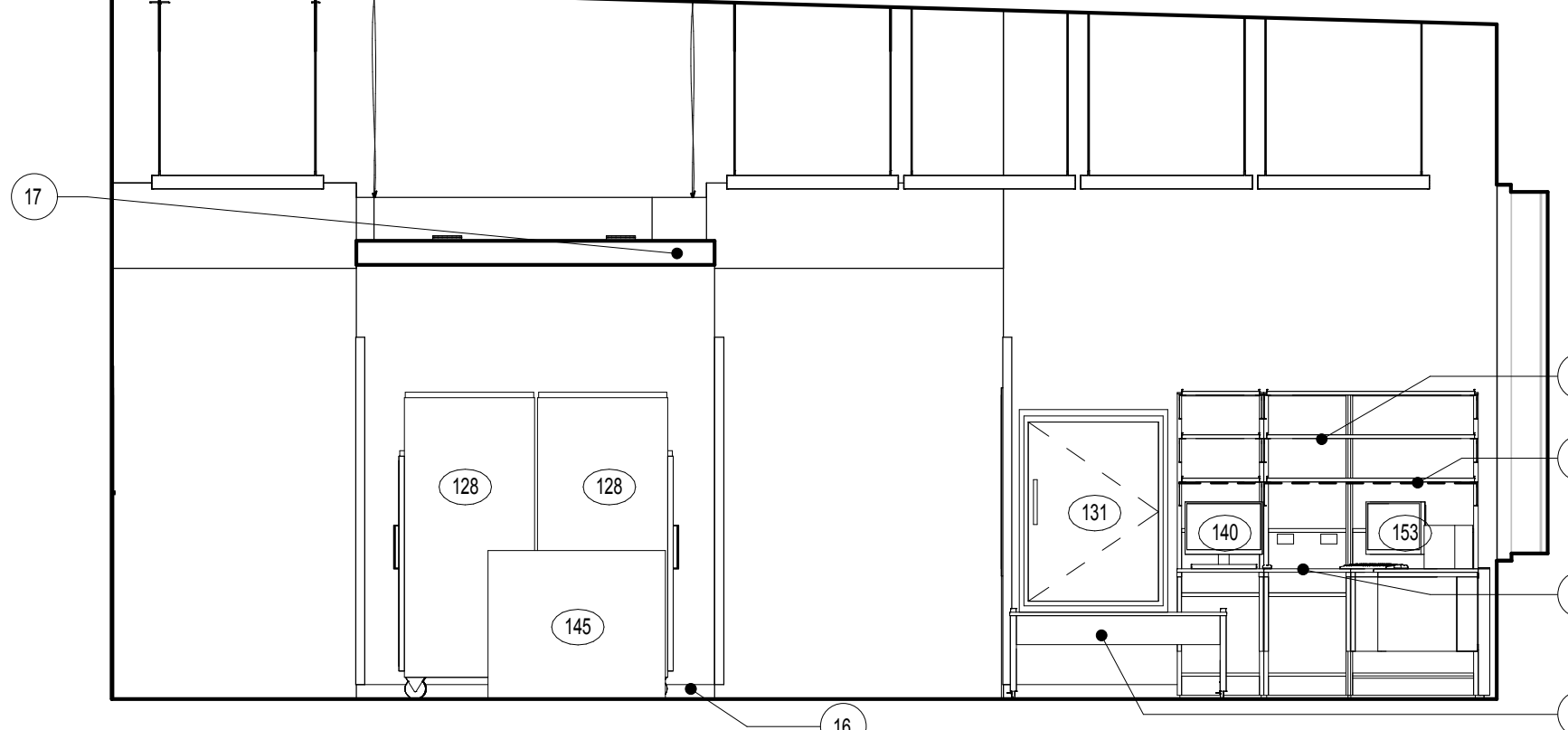
F1 LAB - TRANSFUSION 1
1/4" = 1'-0"



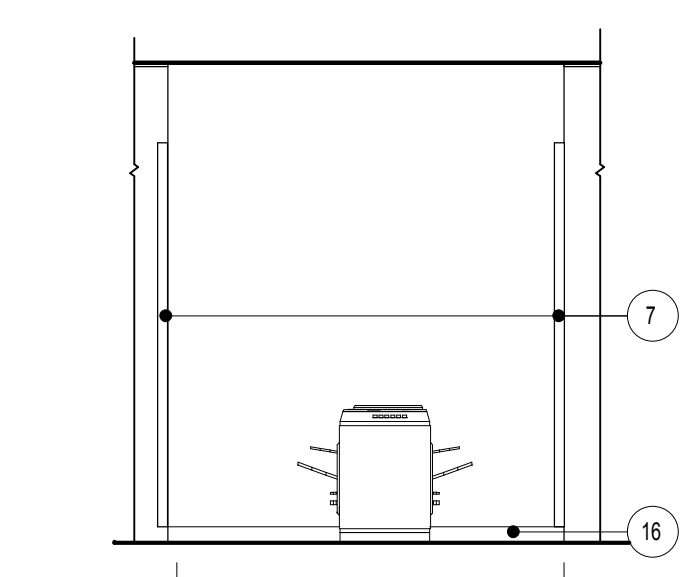
F6 LAB - TRANSFUSION 4
1/4" = 1'-0"



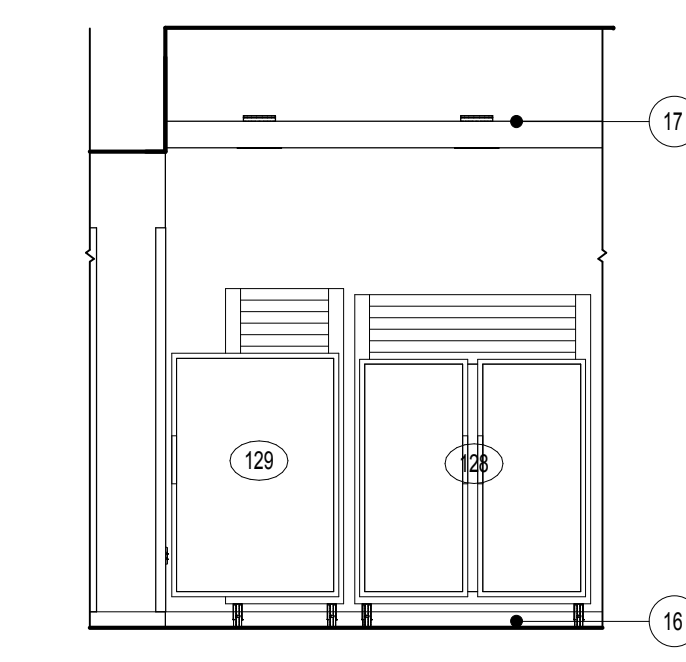
F2 LAB - TRANSFUSION 2
1/4" = 1'-0"



F3 LAB - TRANSFUSION 3
1/4" = 1'-0"



F7 CORRIDOR #2-504
1/4" = 1'-0"



F8 CORRIDOR #2-504
1/4" = 1'-0"

- ### INTERIOR ELEVATION KEYNOTES
- 1 PLASTIC LAMINATE FILLER PANEL.
 - 2 FINISH EXPOSED SIDE OF BASE CABINET WITH PLASTIC LAMINATE.
 - 3 PLASTIC LAMINATE END PANEL.
 - 4 1" PLASTIC LAMINATE SUPPORT LEG.
 - 5 SLOPED PLASTIC LAMINATE FASCIA PANEL ABOVE WALL CABINET, TYPICAL.
 - 6 PLASTIC WALL PROTECTION.
 - 7 CORNER GUARD.
 - 8 HANDRAIL MOUNT TOP AT 2'-10" A.F.F., U.N.O.
 - 9 BUMPER GUARD.
 - 10 ARCHITECTURAL CONCRETE BENCH BELOW STAIRS. REFER TO DETAIL BS9AEK2.
 - 11 FABRIC WRAP TACK BOARD.
 - 12 4" HIGH SOLID SURFACE BACK AND SIDE SPLASHES.
 - 13 SOLID SURFACE WINDOW SILL.
 - 14 WALL OPENING TO BE SCORED TO REFRIGERATOR BOX.
 - 15 SCHEDULED BASE AT RECESSED TOE KICK.
 - 16 SCHEDULED BASE.
 - 17 GYPSUM WALL BOARD SOFFIT.
 - 18 CONTINUOUS WIRE MOLD, REFER TO ELECTRICAL DRAWINGS.
 - 19 CONTINUOUS "J" HANGER.
 - 20 SEGMENTED REMOVABLE ACCESS PANEL.
 - 21 WALL SCONCE.
 - 22 FLOATING CEILING, REFER TO FINISH PLAN FOR MORE INFORMATION.
 - 23 PROVIDE LOCKS ON CABINETS AND DRAWERS AS NECESSARY.
 - 24 SOLID SURFACE POLYMER END PANEL.
 - 25 GRG MESH RAILING WITH CHESTNUT HANDRAIL, OR APPROVED EQUAL. REFER TO SHEET A6402 FOR DETAILS.
 - 26 1/4" NON-VENTED METAL REVEAL.
 - 27 1" REVEAL IN CONCRETE WALL.
 - 28 LAMINATE AND TEMPERED GLASS.
 - 29 METAL SHELVE ON ADJUSTABLE BRACKETS WITH SLOPED TOP.
 - 30 CUBICLE CURTAIN AND TRACK.
 - 31 METAL SUPPORT BRACKET.
 - 32 CORK BOARD, THERMO SCIENTIFIC HAMILTON MAX LAB SYSTEM, OR APPROVED EQUAL.
 - 33 EPOXY RESIN WORK SURFACE, THERMO SCIENTIFIC HAMILTON MAX LAB SYSTEM, OR APPROVED EQUAL.
 - 34 12" METAL SHELVING ON ADJUSTABLE BRACKETS, THERMO SCIENTIFIC HAMILTON MAX LAB SYSTEM, OR APPROVED EQUAL.
 - 35 METAL BASE CABINET WITH 4 INCH TOE KICK, THERMO SCIENTIFIC HAMILTON MAX LAB SYSTEM, OR APPROVED EQUAL.
 - 36 SUSPENDED METAL WALL CABINET WITH SLIDING GLASS DOORS, THERMO SCIENTIFIC HAMILTON MAX LAB SYSTEM, OR APPROVED EQUAL.
 - 37 METAL BASE CABINET.
 - 38 SINK PROVIDED BY CASEWORK MANUFACTURER. FAUCET WITH EMERGENCY EYEWASH FIXTURE. REFER TO PLUMBING FIXTURE SCHEDULE.
 - 39 OPENING IN EXISTING BRICK WALL FOR PENETRATION OF HVAC. REFER TO MECHANICAL DRAWINGS FOR DUCT SIZES AND LOCATIONS.
 - 40 TERRA COTTA SILL.
 - 41 TERRA COTTA PORTAL.
 - 42 TASK LIGHTING.
 - 43 SUSPENDED METAL WALL CABINET WITH SLIDING DOORS, THERMO SCIENTIFIC HAMILTON MAX LAB SYSTEM, OR APPROVED EQUAL.
 - 44 METAL MOBILE HEIGHT-ADJUSTABLE TABLE WITH LOWER SHELF, THERMO SCIENTIFIC HAMILTON MAX MOBILE SYSTEM, OR APPROVED EQUAL. 300 LBS LOAD CAPACITY.
 - 45 ISOLATED TABLE PER USE OF MICROSCOPE. REFER TO ENLARGED PLAN LAB D1/AE211.1 FOR LOCATIONS.
 - 46 ADJUSTABLE PLASTIC LAMINATE SHELVES. ALL (6) SIX FACES TO BE LAMINATED PL-1, U.N.O.
 - 47 RECESSED LIGHT FIXTURES, REFER TO REFLECTED CEILING PLAN FOR INFORMATION.
 - 48 PLEXIGLASS SHEET ACRYLIC MIRROR.
 - 49 CONTINUOUS METAL BASE BY LOCKER MANUFACTURER.
 - 50 METAL FILLER PANEL BY LOCKER MANUFACTURER.
 - 51 CONTINUOUS METAL SLOPED TOP BY LOCKER MANUFACTURER.

GENERAL NOTES

1. REFER TO OVERALL ARCHITECTURAL PLAN FOR ARCHITECTURAL KEYNOTES.

FULLY SPRINKLERED
BID DOCUMENT

CONSULTANTS: Architects-Interiors: ARRAY Structural Engineer: WZG MEP Engineer: APOGEE Fire Protection: Harrington Group, Inc.		PROJECT MANAGER: Bray Mooney Consulting 410 East 21st Street Chester, PA 19013 Tel: (215) 518-0864 Fax: (484) 428-1547		Project Number: 3545 Scale: As indicated	Drawing Title: ENLARGED PLANS AND INTERIOR ELEVATIONS - LABORATORY	Project Title: BUILDING 3 OUTPATIENT MEDICAL SUITES AND LAB	VA Project Number: 542-09-121	Office of Facilities Management
Bid RFI Revisions-3545 05-23-13 Revisions: _____ Date: _____		Approved: Project Director		Location: 1400 Black Horse Hill, Coatesville, PA	Drawing Number: AE211.1	Date: 04-23-2012	Checked: WC Drawn: BG	