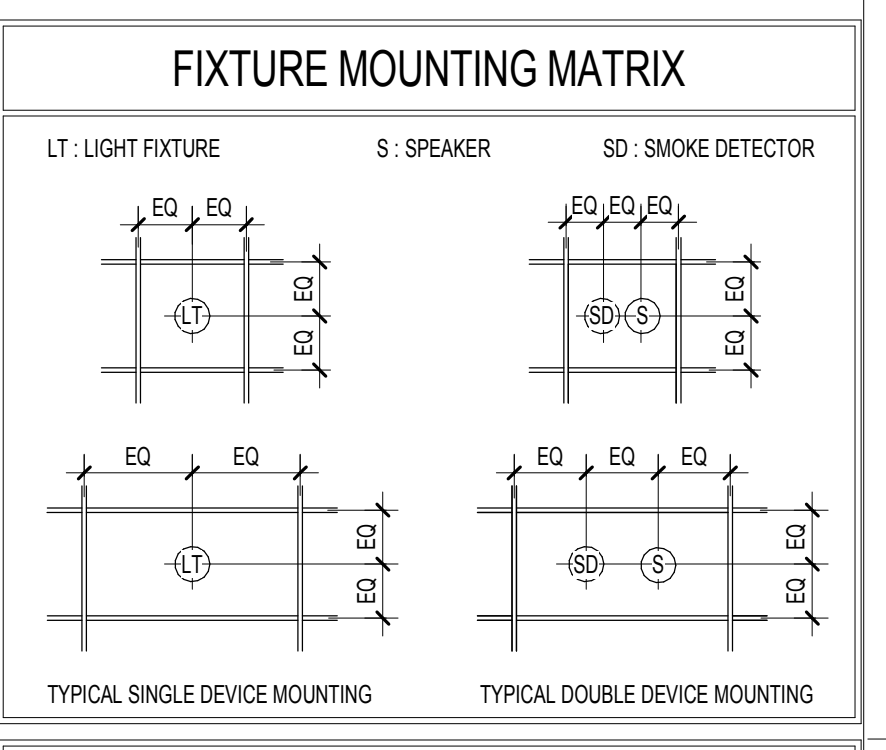
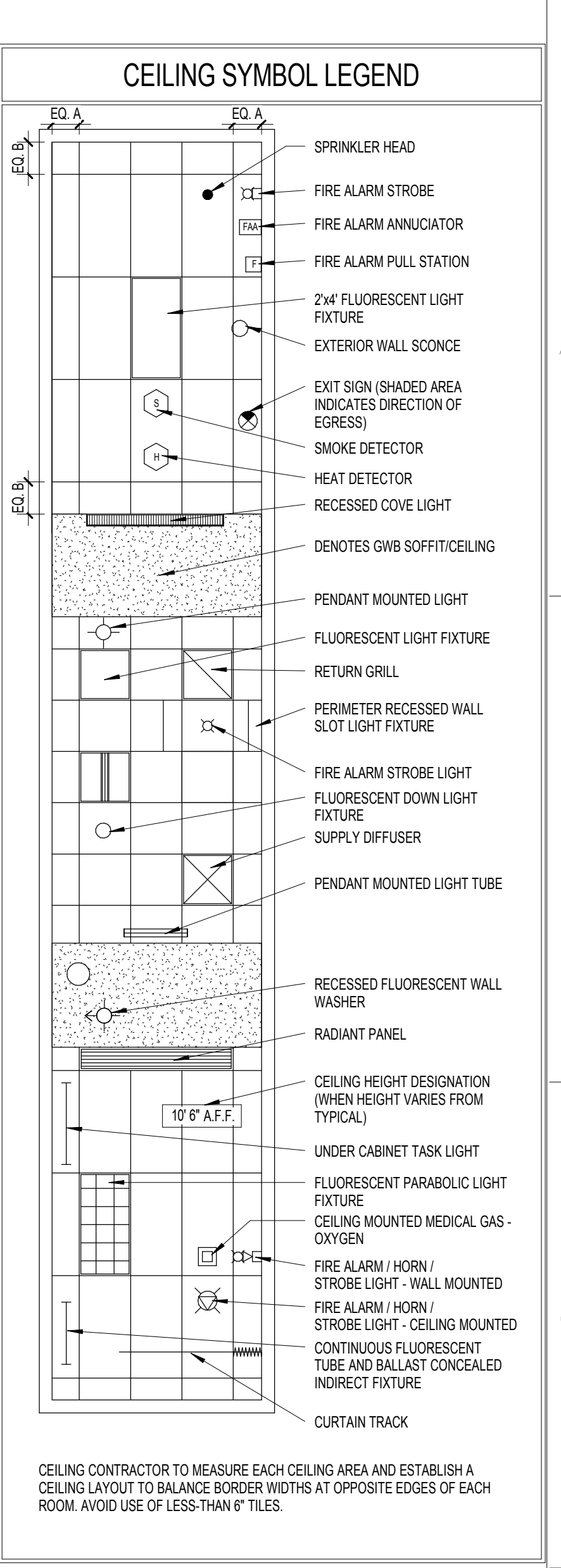


- ### CEILING PLAN GENERAL NOTES
- REFER TO SHEET AE2704 FOR INTERIOR FINISH SCHEDULE.
  - REFER TO SHEET AE603 FOR TYPICAL CUBICLE CURTAIN TRACK DETAIL.
  - COORDINATE LOCATIONS OF SPRINKLERS, HVAC, AND FIRE PROTECTION WITH MEP AND FIRE PROTECTION DRAWINGS.
- ### REFLECTED CEILING KEYNOTES
- (C1) STRUCTURE ABOVE EXPOSED: SEAL CONCRETE SLAB AND RB STRUCTURE WITH CLEAR MATTE URETHANE PAINT. PAINT ALL EXPOSED MECHANICAL UNITS AND DEVICES TO MATCH.
  - (C2) LED PERIMETER LIGHTING AROUND ANOM PERIMETER TRIM
  - (C3) C-4 REFER TO FINISH SCHEDULE FOR MORE INFORMATION
  - (C4) C-5 REFER TO FINISH SCHEDULE FOR MORE INFORMATION
  - (C5) C-6 REFER TO FINISH SCHEDULE FOR MORE INFORMATION
  - (C6) FINISHED SKYLIGHT ABOVE: GYPSUM WALLBOARD TO BE PAINTED PT-1, U.N.D.
  - (C7) RECESSED PERIMETER LIGHT FIXTURE: LITECONTROL, WALLSLOT 2100.
  - (C8) LINEAR LIGHT FIXTURE: RECESSED, DIRECT, LITECONTROL, MOD 96
  - (C9) EXISTING CEILING TO REMAIN. REPLACE ANY DAMAGED OR DIRTY CEILING TILES, AND RELAMP EXISTING FIXTURES TO REMAIN.
  - (C10) PAINT EXPOSED CEILING, REFER TO FINISH SCHEDULE FOR PAINT TYPE.
  - (C11) RECESSED METAL TRACK UNDERSIDE OF SOFFIT FOR TEMPERED, LAMINATED GLASS
  - (C12) UNISTRUT SUPPORT IN CEILING FOR RADIOLOGY EQUIPMENT.
  - (C13) REFER TO SHEET ELECTRICAL LIGHT PLAN FOR LIGHTING WITHIN SPACE.
  - (C14) PROVIDE A FRY REGLET REVEAL TO TERMINATE MATERIAL / COLOR CHANGE. DRM-25-25
  - (C15) SUSPENDED GYPSUM WALLBOARD CEILING ON STUDS. SUSPENDED BY 1/2 INCH CABLE WIRE. ANCHOR CEILING TO ADJACENT WALLS WHERE NECESSARY.
  - (C16) SOFFIT FASCIA AND UNDERSIDE TO BE PAINTED PT-4
  - (C17) SOFFIT FASCIA AND UNDERSIDE TO BE PAINTED PT-7
  - (C18) SOFFIT FASCIA AND UNDERSIDE TO BE PAINTED PT-5
  - (C19) SOFFIT FASCIA AND UNDERSIDE TO BE PAINTED PT-10
  - (C20) SOFFIT FASCIA AND UNDERSIDE TO BE PAINTED PT-3
  - (C21) SOFFIT FASCIA AND UNDERSIDE TO BE PAINTED PT-8
  - (C22) MAIN RUN FOR SPRINKLER LINES. COORDINATE LOCATIONS OF SPRINKLER HEADS WITH FIRE PROTECTION DRAWINGS.
  - (C23) SUSPENDED ACOUSTIC CEILING ON 2X6 METAL STUDS. SUSPENDED BY 1/2 INCH CABLE WIRE. ANCHOR CEILING TO ADJACENT WALLS WHERE NECESSARY.
  - (C24) PAINT EXISTING STEEL TRUSSES WITH SHERWIN WILLIAMS PRO INDUSTRIAL HB-BLD WATER BASED CATALYZED EPOXY COATING IN SHERWIN WILLIAMS COLOR TBD



- ### REFLECTED CEILING GENERAL NOTES
- EXPOSED CEILING TO RECEIVE A TWO PART EPOXY COATING IN PT-1.
  - REFER TO STRUCTURAL DRAWINGS FOR PATIENT LIFT SUPPORT DETAILS.
  - PROVIDE A TOTAL OF (8) PATIENT LIFTS. (3) TO BE USED ON THE SECOND FLOOR. (5) TO BE USED ON THE FIRST FLOOR. FIRST FLOOR UNITS DO NOT REQUIRE ANY TRACK OR STRUCTURAL SUPPORT.

FULLY SPRINKLERED  
BID DOCUMENT

**Revisions**

Revisions	Date

### CONSULTANTS:

<b>Architects-Interiors</b>  2520 Renaissance Blvd Suite 110 King of Prussia, PA 19406 Tel: (610) 270-5599 Fax: (610) 270-5995	<b>Structural Engineer</b>  180 W. Ridge Pike Limerick, PA 19468 Tel: (214) 329-5559	<b>MEP Engineer</b>  6325 Woodside Court Columbia, MD 21046 Tel: (919) 858-7420	<b>Fire Protection</b> Harrington Group, Inc. 7508 E. Independence Blvd Suite 116 Charlotte, NC 28227 Tel: (704) 531-9077 Fax: (704) 567-7087
--------------------------------------------------------------------------------------------------------------------------------------------------	--------------------------------------------------------------------------------------------------	---------------------------------------------------------------------------------------------	-----------------------------------------------------------------------------------------------------------------------------------------------------------------

### PROJECT MANAGER:

**Bray Mooney Consulting**

410 East 21st Street  
 Chester, PA 19013  
 Tel: (215) 518-0864  
 Fax: (484) 428-1547

Project Number: 3545  
 Scale: As indicated

Drawing Title: **SECOND FLOOR OVERALL REFLECTED CEILING PLAN**

Approved: Project Director

Project Title: **BUILDING 3 OUTPATIENT MEDICAL SUITES AND LAB**

Location: **1400 Black Horse Hill, Coatesville, PA**

Date: 04-23-2012  
 Checked: WC  
 Drawn: BG/JW

VA Project Number: 542-09-121  
 Building Number:   
 Drawing Number: **AE122**  
 Dwg. 13 of 79

Office of Facilities Management

Department of Veterans Affairs