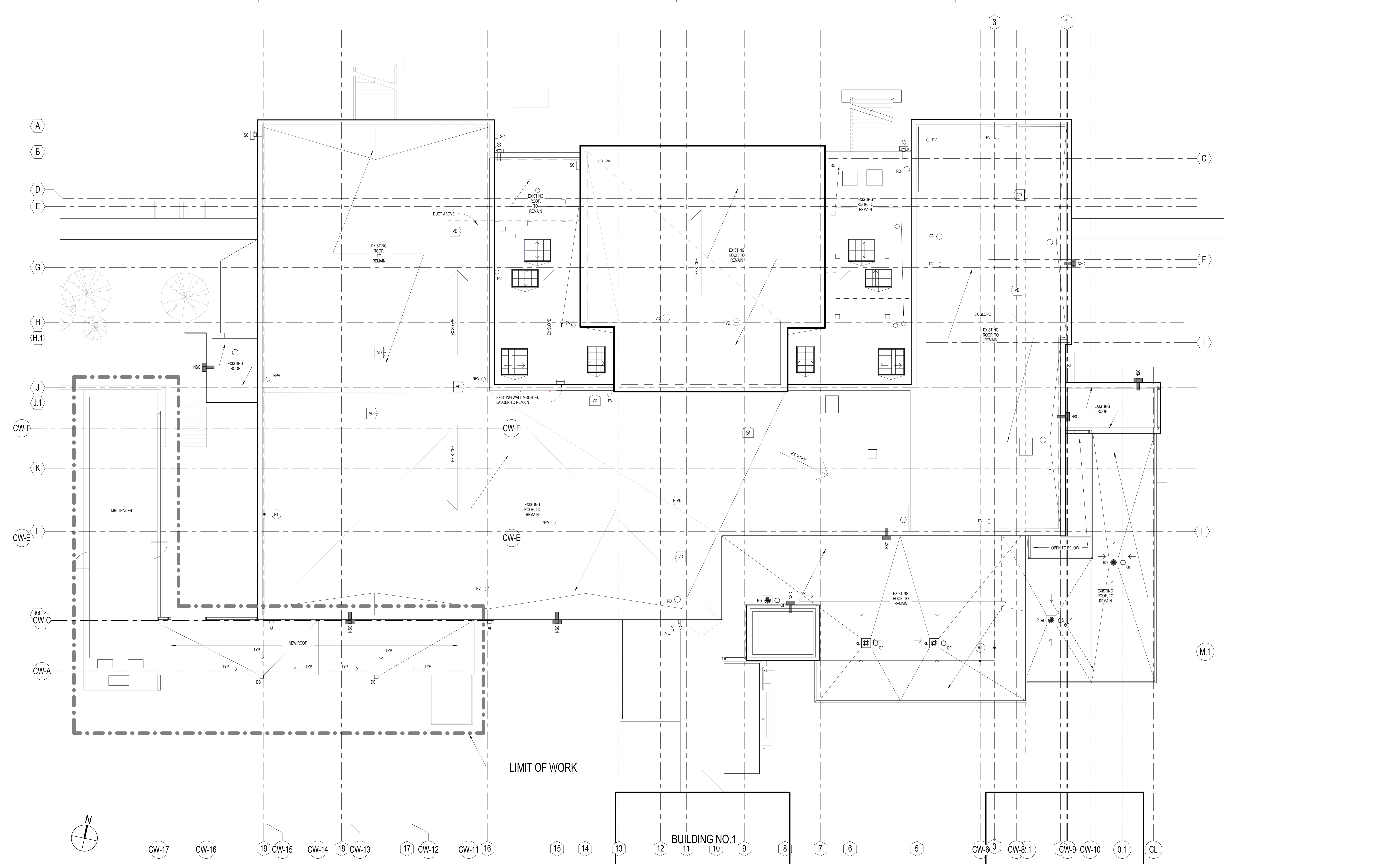


three inches = one foot
 one and one half inches = one foot
 one inch = one foot
 three quarters inch = one foot
 one half inch = one foot
 one quarter inch = one foot
 three eighths inch = one foot
 one eighth inch = one foot
 one eighth inch = one foot
 one eighth inch = one foot



Copy of Roof and Site Utility Plan
1/8" = 1'-0"

BID DOCUMENT

CONSULTANTS: Architects-Interiors: ARRAY Structural Engineer: WZG MEP Engineer: APOGEE Fire Protection: Harrington Group, Inc.		PROJECT MANAGER: Bray Mooney Consulting 410 East 21st Street Chester, PA 19013 Tel: (215) 518-0864 Fax: (484) 428-1547		Project Number: 3545 Scale: 1/8" = 1'-0"	Drawing Title: ROOF PLAN Approved: Project Director	Project Title: BUILDING 3 OUTPATIENT MEDICAL SUITES AND LAB Location: 1400 Black Horse Hill, Coatesville, PA Date: 04-23-2012	VA Project Number: 542-09-121 Building Number: 03 Drawing Number: AE142 Dwg. of	Office of Facilities Management Department of Veterans Affairs
Bid RFI Revisions-3545 05-23-13 Revisions: _____ Date: _____						Checked: _____ Drawn: _____ Checker: _____ Author: _____		