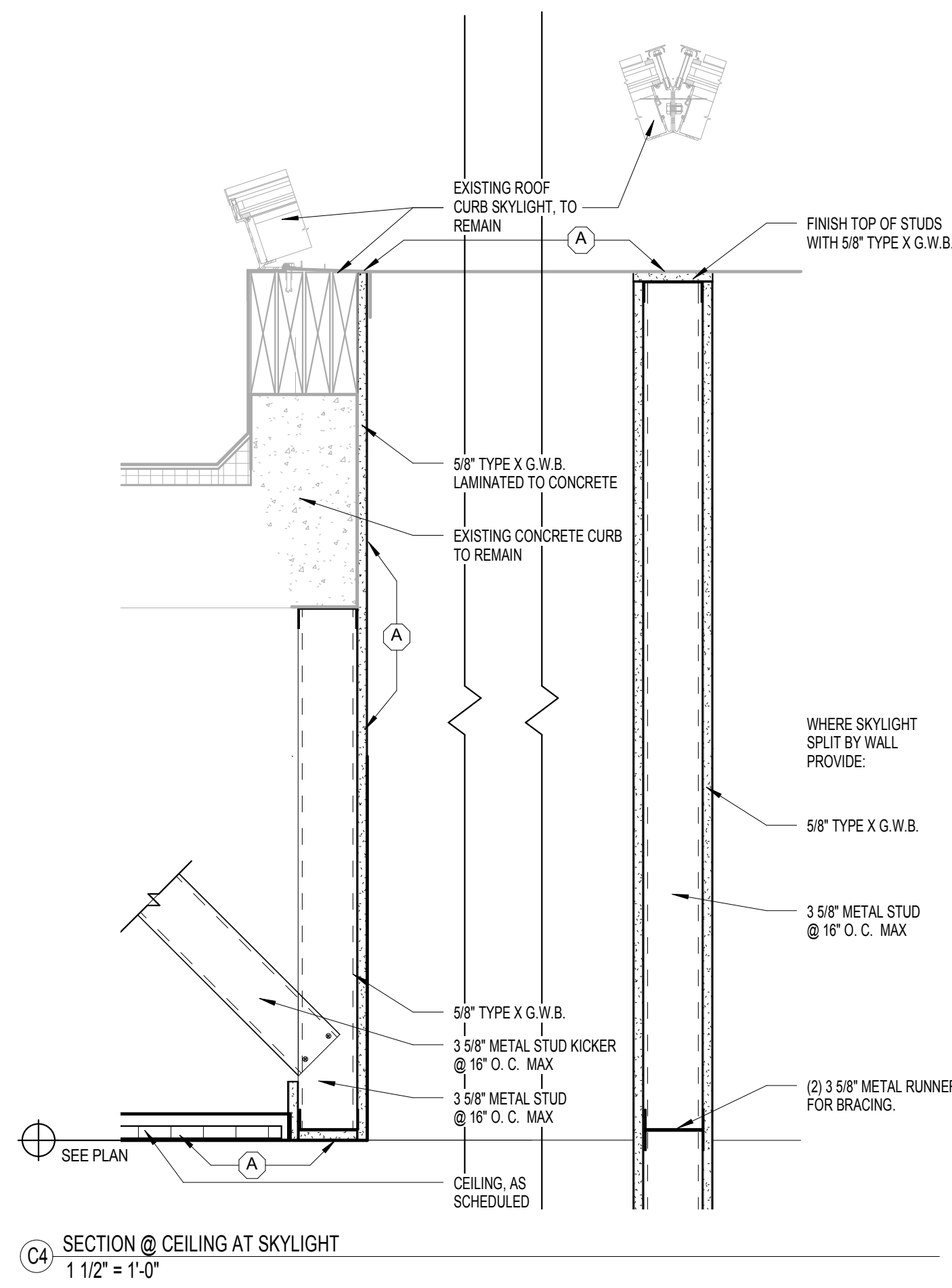
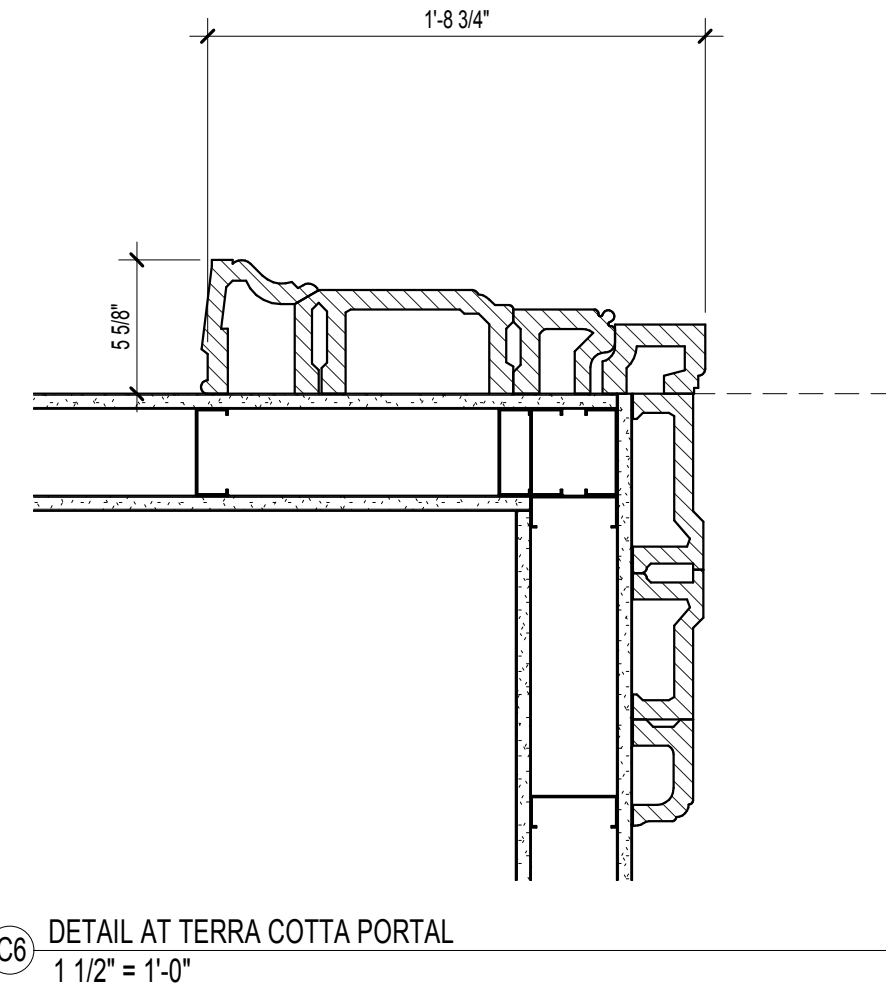


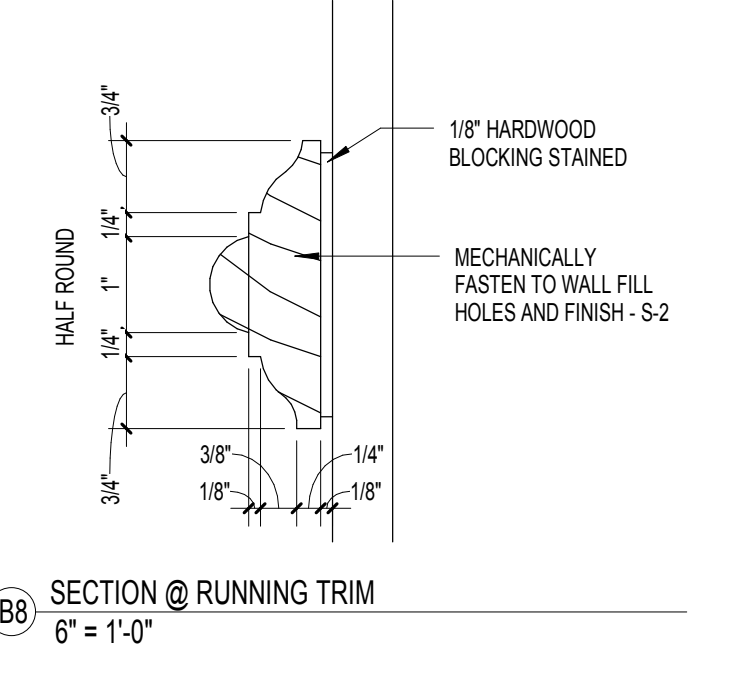
three inches = one foot
 one and one half inches = one foot
 one inch = one foot
 three quarters inch = one foot
 one half inch = one foot
 three eighths inch = one foot
 one quarter inch = one foot
 one eighth inch = one foot



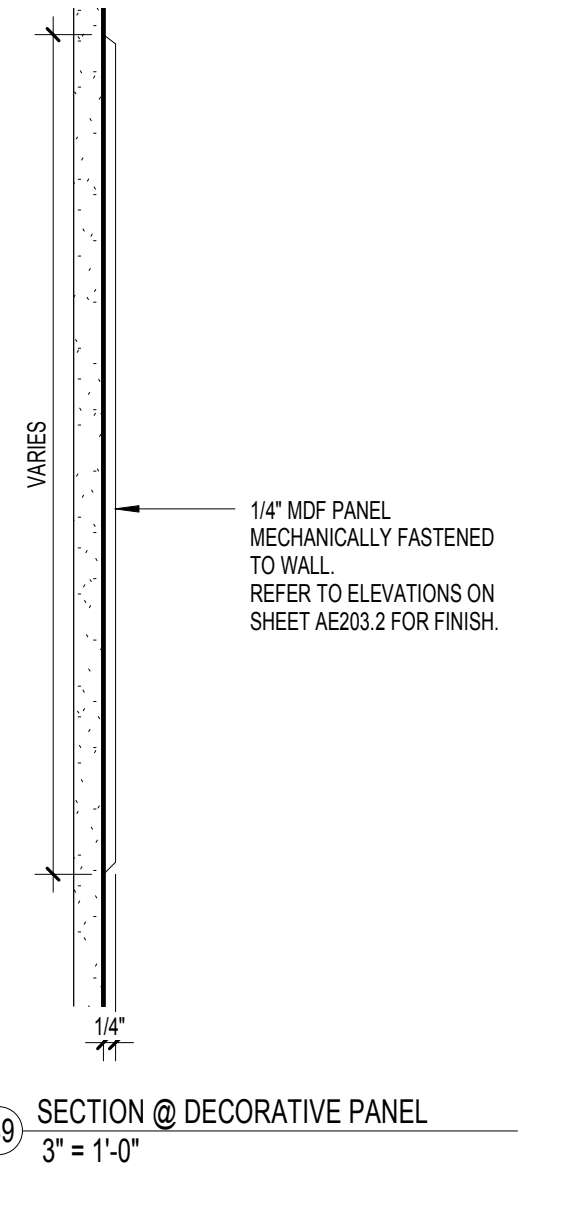
C4 SECTION @ CEILING AT SKYLIGHT
1 1/2" = 1'-0"



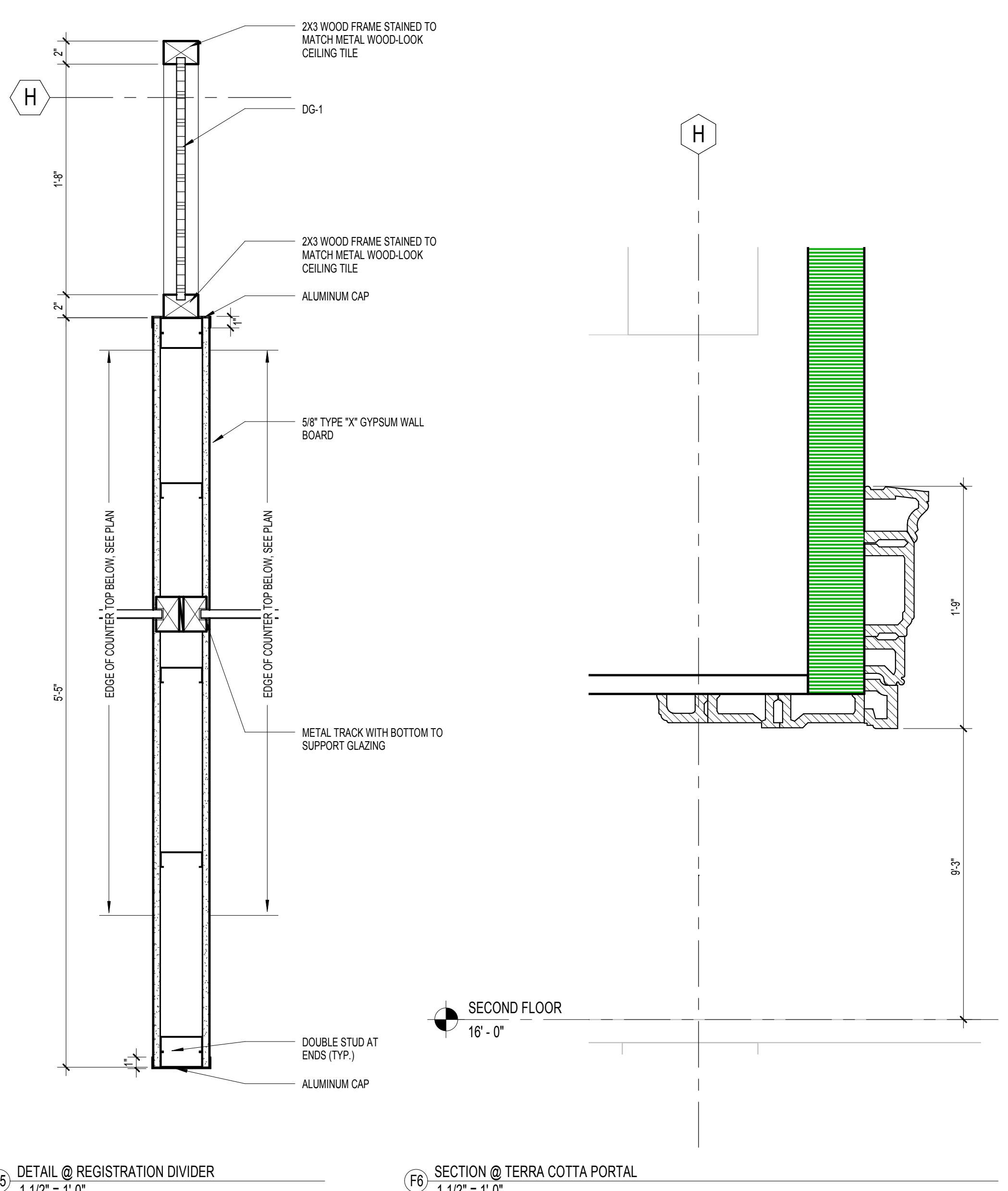
C6 DETAIL AT TERRA COTTA PORTAL
1 1/2" = 1'-0"



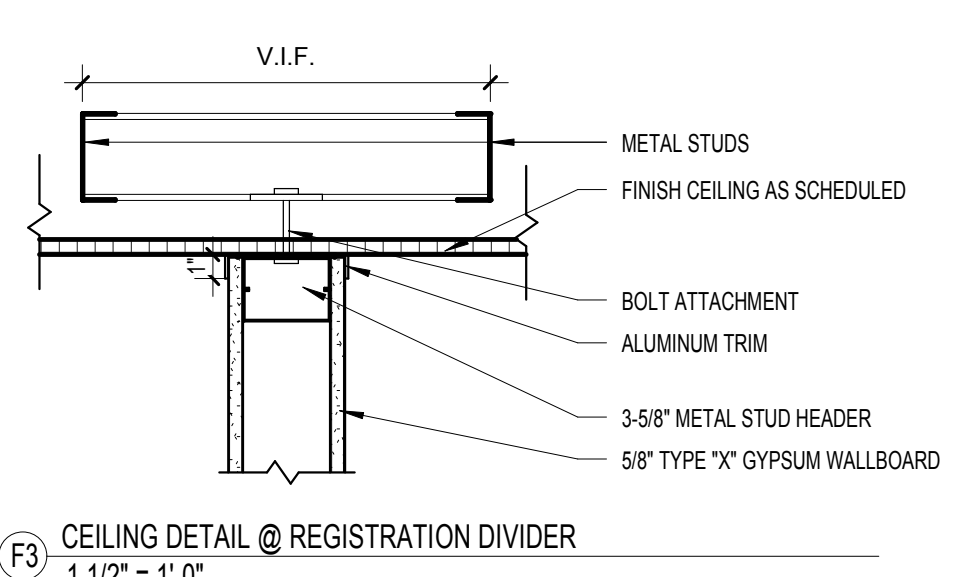
B8 SECTION @ RUNNING TRIM
6" = 1'-0"



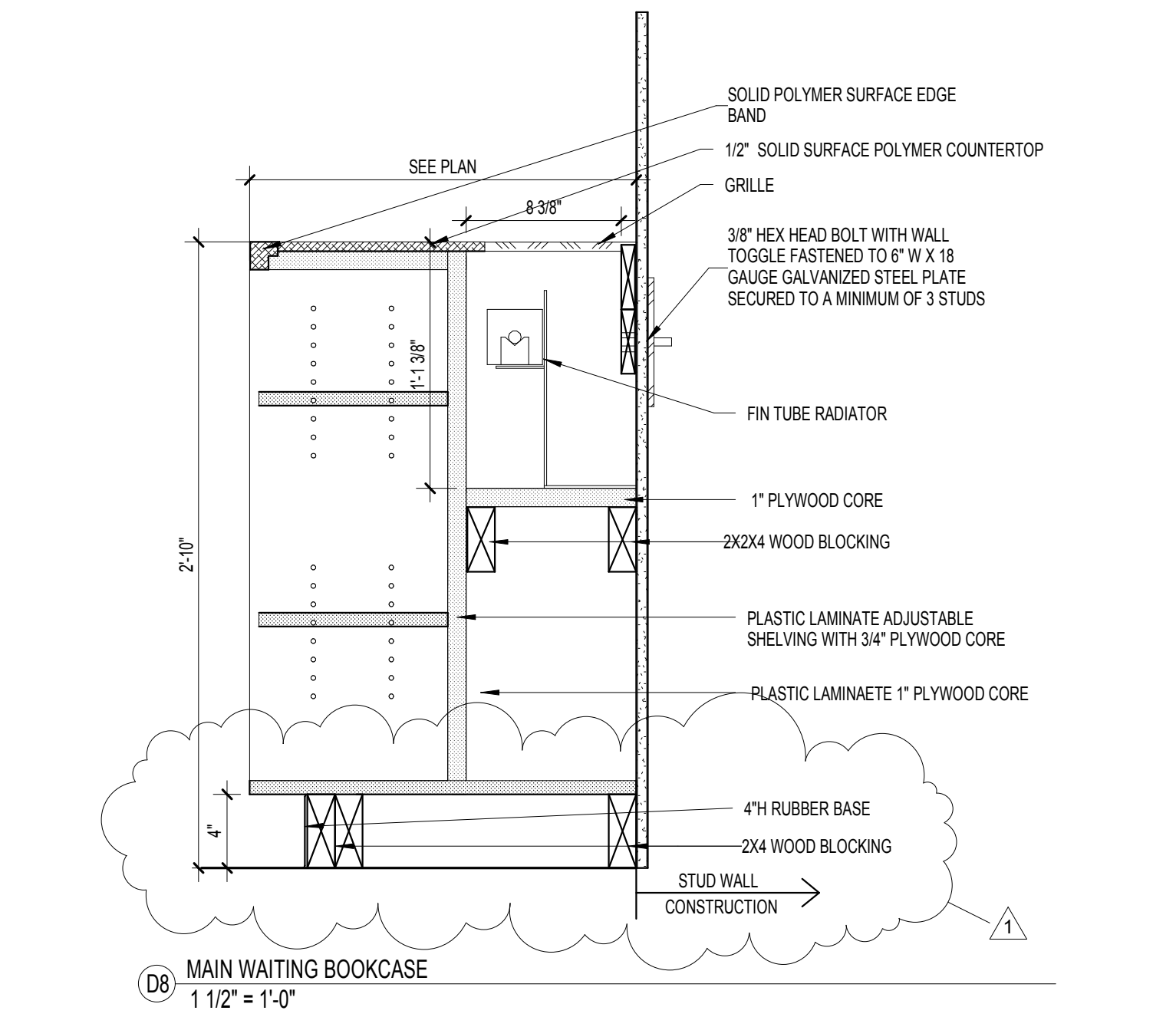
B9 SECTION @ DECORATIVE PANEL
3" = 1'-0"



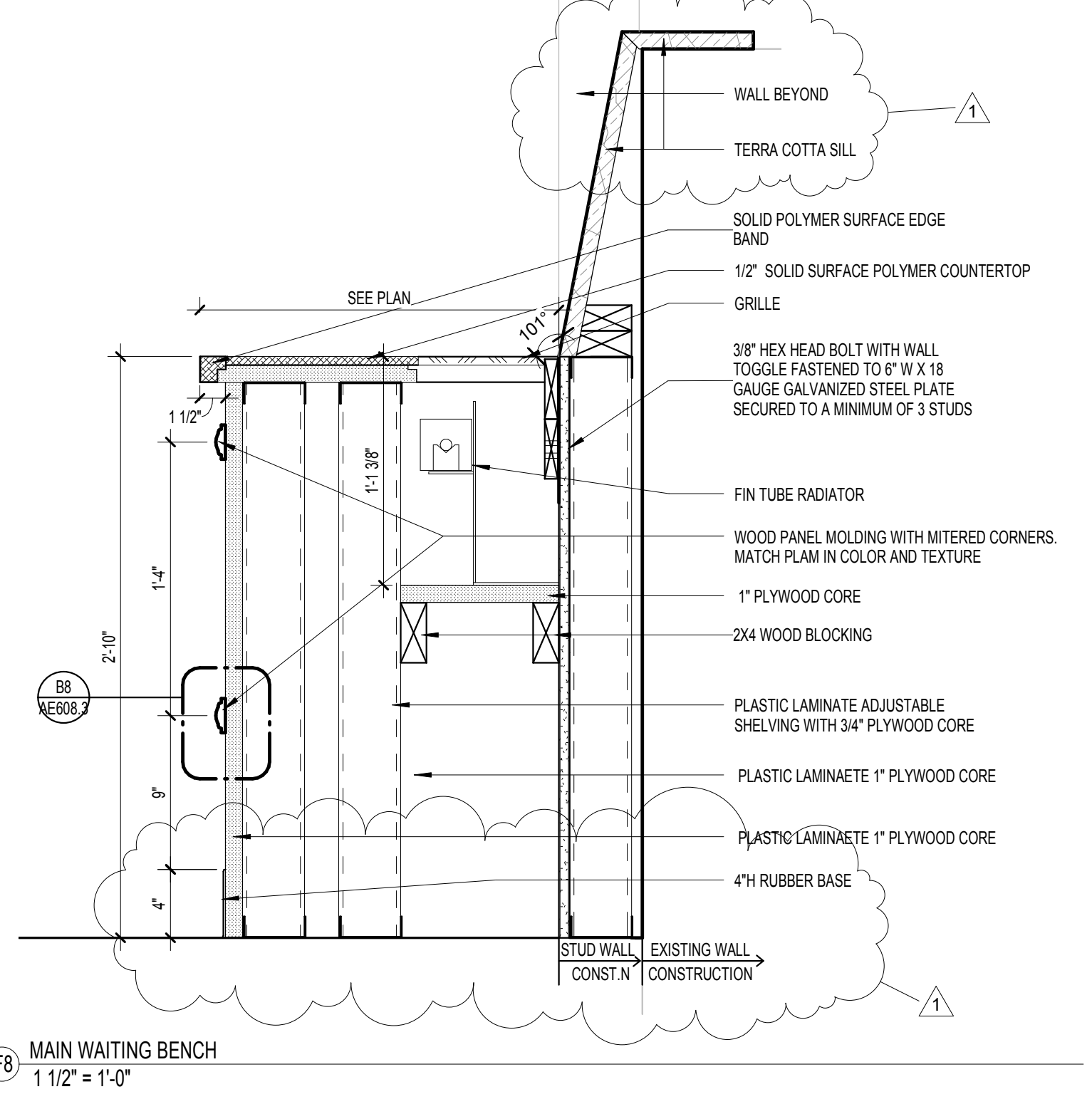
F5 SECTION @ TERRA COTTA PORTAL
1 1/2" = 1'-0"



F3 CEILING DETAIL @ REGISTRATION DIVIDER
1 1/2" = 1'-0"



D6 MAIN WAITING BOOKCASE
1 1/2" = 1'-0"



F8 MAIN WAITING BENCH
1 1/2" = 1'-0"

FULLY SPRINKLERED
 BID DOCUMENT

CONSULTANTS: Architects-Interiors: ARRAY Structural Engineer: WZG MEP Engineer: APOGEE Fire Protection: Harrington Group, Inc.		PROJECT MANAGER: Bray Mooney Consulting 410 East 21st Street Chester, PA 19013 Tel: (215) 518-0864 Fax: (484) 428-1547		Project Number: 3545 Scale: As indicated	Drawing Title: INTERIOR DETAILS Approved: Project Director	Project Title: BUILDING 3 OUTPATIENT MEDICAL SUITES AND LAB Location: 1400 Black Horse Hill, Coatesville, PA Date: 04-23-2012	VA Project Number: 542-09-121 Building Number: 3 Drawing Number: AE608.3	Office of Facilities Management Department of Veterans Affairs
2520 Renaissance Blvd Suite 110 King of Prussia, PA 19406 Tel: (610) 270-5599 Fax: (610) 270-5995		180 W. Ridge Pike Limerick, PA 19468 Tel: (214) 329-5559		6325 Woodside Court Columbia, MD 21046 Tel: (919) 858-7420		7508 E. Independence Blvd Suite 116 Charlotte, NC 28227 Tel: (704) 531-9077 Fax: (704) 567-7087		