



Department of Veterans Affairs

CAPTAIN JAMES A. LOVELL FEDERAL HEALTH CARE CENTER

3001 GREEN BAY ROAD NORTH CHICAGO, ILLINOIS

LOADING DOCK REPLACEMENT - BUILDING 134 PROJECT # 556-13-112

DRAWING INDEX

GENERAL

G100 COVER SHEET
G100 PROJECT NOTES

ARCHITECTURAL

AD-101 DOCK DEMOLITION PLAN
AS-101 LOADING DOCK PLAN
AS-102 LOADING DOCK ROOF PLAN & DETAILS
AS-201 DOCK REFLECTED CEILING PLAN
AS-301 ELEVATIONS
AS-401 SECTIONS & DETAILS
AS-601 DOOR SCHEDULE & DETAILS

STRUCTURAL

S-100 FOUNDATION PLANS & DETAILS

ELECTRICAL

E-100 ELECTRICAL COVER SHEET
E-101 ELECTRICAL DEMOLITION & NEW WORK PLANS

PLUMBING - FIRE PROTECTION

FP-100 FIRE PROTECTION LEGENDS, INDEX & NOTES
FP-101 LOADING DOCK - FIRE PROTECTION PLAN

		CONSULTANTS: K J ENGINEERING CONSULTANTS 2115 NORTH LAUREL, SUITE 100 CHICAGO, ILLINOIS 60614 312.264.8111 FAX 312.264.0033 www.kjw.com	ARCHITECT/ENGINEERS: COX DESIGN ASSOCIATES ARCHITECTURE PLANNING INTERIORS Chicago 345 N. Canal St., Suite 701 Chicago, IL 60606 T: 312-698-3880 F: 312-454-9439 Austin 5121 Bee Caves Road, Suite 203 Austin, Texas 78746 T: 512-327-4149 F: 512-327-7679	Approved: Assistant Director Approved: Chief of Staff Approved: Chief Engineering	Approved: Chief Architect Approved: Senior Chief Approved: Senior Chief Approved: Chief, EMS Approved: Chief, I&O Approved: Chief Approved: Chief, Safety Approved: Chief	Approved: Chief, Engineering Approved: Senior Chief Approved: Chief, Information Control Approved: Chief, Police	Drawing Title COVER SHEET	Project Name LOADING DOCK REPLACEMENT BUILDING 134	Project Number 556-13-112	Date 15 APRIL 2013	Drawing Number GI-000	Building Number 134	Checked RHC	Drawn PUJ	Dept. of	Office of Construction and Facilities Management
--	--	----------------------------------------------------------------------------------------------------------------------------------------------------------------------	--------------------------------------------------------------------------------------------------------------------------------------------------------------------------------------------------------------------------------------------------------------------------------------	-----------------------------------------------------------------------------------------	------------------------------------------------------------------------------------------------------------------------------------------------------------------------------------------------	---------------------------------------------------------------------------------------------------------------------------	-------------------------------------	--------------------------------------------------------------	-------------------------------------	------------------------------	---------------------------------	-------------------------------	-----------------------	---------------------	----------	------------------------------------------------------

DISCIPLINE REFERENCES

DRAWINGS FOR THE FOLLOWING DISCIPLINES ARE CONTAINED IN THE DOCUMENT. THE DISCIPLINES ARE IDENTIFIED BY THE REFERENCE WHICH IS INCORPORATED INTO THE SHEET TITLE.

**I
A
R
P
M
E
T**

GENERAL INFORMATION
ARCHITECTURAL
FIRE PROTECTION
PLUMBING
MECHANICAL
ELECTRICAL
TECHNOLOGY

SHEET NUMBER

BUILDING NUMBER — 1-A1 — SHEET NUMBER DISCIPLINE

DRAWING NUMBERING

BUILDING SECTION REF: F1A3-101

EACH DRAWING IS NUMBERED ACCORDING TO ITS LOCATION ON THE SHEET. THE DRAWING TITLE APPEARS ABOVE THE DEMARCATION LINE AND, WHERE APPROPRIATE, THE SCALE IS LOCATED BELOW THE DEMARCATION LINE IN THE LOWER LEFT-HAND QUADRANT OF THE KEY. THE DRAWING CAN BE REFERENCED BACK TO ITS ORIGINAL SHEET AND DRAWING BY THE DRAWING REFERENCE LOCATION IN THE LOWER RIGHT-HAND QUADRANT.

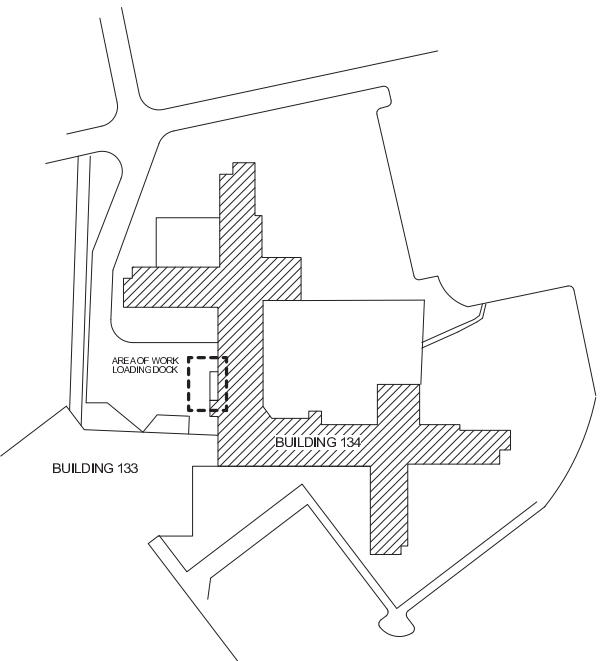
DRAWING REFERENCE

RE: 1/AS-101

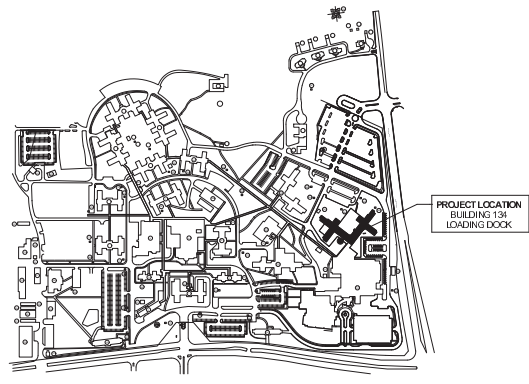
SHEET NUMBER
DRAWING NUMBER ON SHEET BY LOCATION
REFERENCE

DIMENSIONING CONVENTIONS

1. EXCEPT WHERE DIRECTED TO PLACE ITEMS OF THE WORK AT THE "APPROXIMATE LOCATIONS SHOWN" DO NOT SCALE DRAWINGS FOR DIMENSIONAL INFORMATION.
2. ALL ELEMENTS OF THE DOCUMENTS MAY NOT BE DRAWN TO EXACT SCALE. ALL DIMENSIONS REQUESTED ARE SHOWN OR MAY BE DERIVED FROM THOSE SHOWN NOTED ON THE FLOOR PLANS, DETAIL PLANS, ELEVATIONS, SECTIONS, SCHEDULES, CONFIGURATION DETAILS, AND SPECIFICATIONS. SEE THE NOTES BELOW AND SYMBOLS FOR DIMENSIONING CONVENTIONS USED ON THIS PROJECT.
 - A. DIMENSIONS UTILIZING THE "CENTERLINE" SYMBOL ARE MEASURED TO:
 - CENTERLINE OF PARTITION ASSEMBLY EXCLUSIVE OF ANY APPLIED FINISHES HAVING THICKNESS WHICH MAY BE ADDED TO SUCH WALLS AT PARTITIONS FRAMED WITH METAL STUDS. REFER TO "PARTITION SCHEDULE" TO DETERMINE THICKNESS OF EACH PARTITION TYPE.
 - CENTERLINE OF DOOR, WINDOW, OR LOUVER OPENING.
 - CENTERLINE OF OTHER FEATURES AS INDICATED.
 - B. DIMENSIONS UTILIZING THE "FACE OF" SYMBOL ARE MEASURED TO:
 - FACE OF PARTITION ASSEMBLY EXCLUSIVE OF ANY APPLIED FINISHES HAVING THICKNESS WHICH MAY BE ADDED TO SUCH WALLS AS DEFINED BY THE PARTITION SCHEDULE. UNLESS NOTED AS A "FACE OF FINISH" OR "CLEAR" DIMENSION (SEE NOTE "B" BELOW) DIMENSIONS ARE NOT MEASURED TO THE FACE OF APPLIED FINISH. REFER TO THE "PARTITION SCHEDULE" TO DETERMINE THE THICKNESS OF EACH PARTITION TYPE.
 - C. WHERE "EQUAL" DIMENSIONS ARE USED ON REFLECTED CEILING PLANS TO LOCATE CEILING GRID WORK-POINTS, MEASURE DIMENSIONS TO:
 - EDGE OF THE INDICATED CEILING AT THE FACE OF THE ADJACENT APPLIED FINISH MEASURED AT THE PLANE OF THE CEILING.
 - CAUTION DUE TO THE POSSIBLE APPLICATION OF APPLIED FINISHES - THICKNESS OF WHICH MAY VARY BETWEEN FLOOR AND CEILING AND IS NOT ACCOUNTED FOR EXCEPT AS INDICATED BY "FDM" OR "CLEAR" BY THE DIMENSION SHOWN ON THE FLOOR PLANS. THE CONTRACTOR MUST ADJUST AS NECESSARY. THE FLOOR PLAN DIMENSIONS TO REFLECT THE ACTUAL DIMENSIONS FOUND AT PLANE OF THE CEILING.
4. WHERE WALLS AND/OR PARTITIONS OF UNEQUAL THICKNESS ABUT, ALIGN EXPOSED FACES, UNLESS OTHERWISE NOTED.
5. WHERE OPENINGS IN WALLS (SUCH AS INTERIOR WINDOWS OR DOORS) ARE NOT DIMENSIONED BUT SHOWN AS BEING IN THE CENTER OF A GIVEN WALL SURFACE, LOCATE OPENINGS AS GRAPHICALLY REPRESENTED.



1 EXISTING SITE PLAN
P = 30'-0"



2 LOCATION PLAN
P = 30'-0"



CONSULTANTS:

K J ENGINEERING CONSULTANTS
 2110 FLOWER HILL, SUITE 100
 CHICAGO, IL 60664
 T: 312-641-1111 FAX: 312-294-0033
 www.kjce.com

ARCHITECT/ENGINEERS:

COX DESIGN ASSOCIATES
 ARCHITECTURE PLANNING INTERIORS
 Chicago 345 N. Canal St., Suite 701 Chicago, IL 60606 T: 312-698-3880 F: 312-484-9439
 Austin 5121 Bee Caves Road, Suite 203 Austin, Texas 78746 T: 512-327-4149 F: 512-327-7079

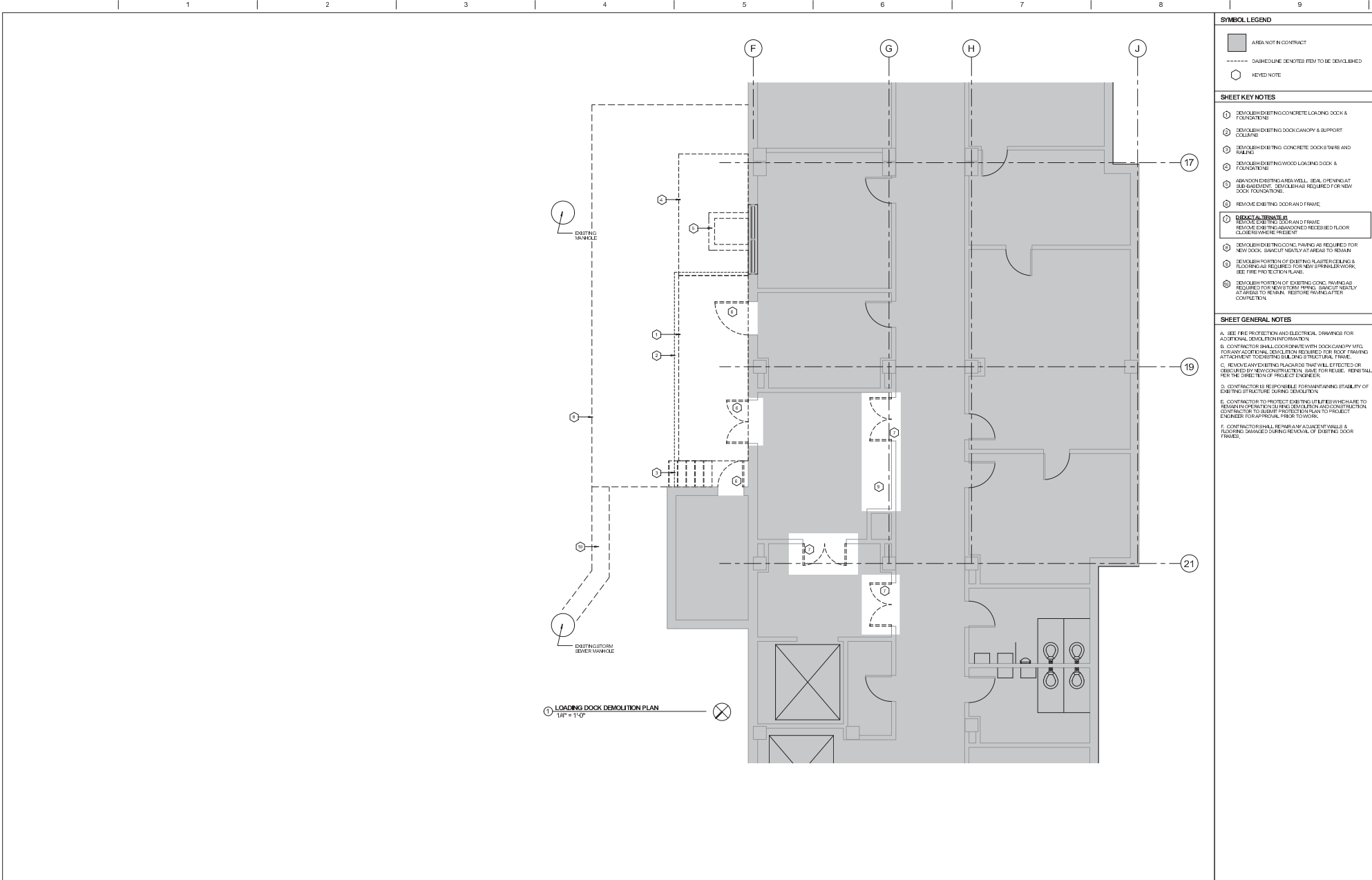
Approved: Joseph Lerner Approved: Simon Opler Approved: Char/Blake Approved: Char/FT Approved: Char/Statey	Approved: Chris of Shah Approved: Simon Opler Approved: Char/EMS Approved: Char/SLO Approved: Char	Approved: Chris Engineering Approved: Simon Opler Approved: Char/Johanna Conell Approved: Chris Palko Approved: Chris
------------------------------------------------------------------------------------------------------------------------	----------------------------------------------------------------------------------------------------------------	-----------------------------------------------------------------------------------------------------------------------------------

Drawing Title ARCHITECTURAL GENERAL INFORMATION	Project Name LOADING DOCK REPLACEMENT BUILDING 134
Location CAPTAIN JAMES A. LOVELL F.H.C.C. NORTH CHICAGO, ILLINOIS	

Project Number 556-13-112	Date 15 APRIL 2013	Drawing Number GI-100
Building Number 134	Checked RHC	Drawn PU
Date: _____		Drawn by: _____



1
2
3
4
5
6
7
8
9
A
B
C
D
E
F

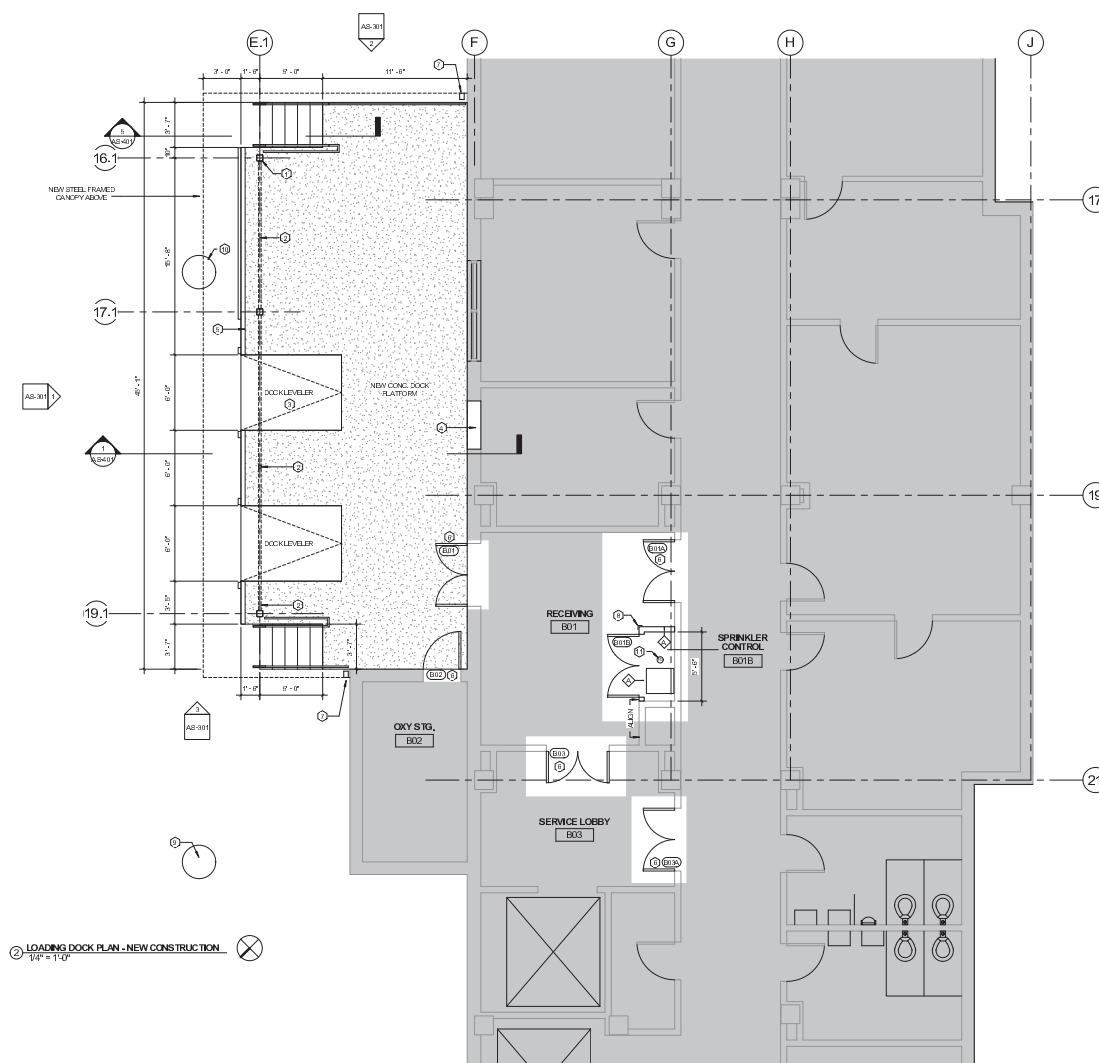


SYMBOL LEGEND	
	AREA NOT IN CONTRACT
	DASHED LINE DENOTES ITEM TO BE DEMOLISHED
	KEYED NOTE

- SHEET KEY NOTES**
- 1 DEMOLISH EXISTING CONCRETE LOADING DOCK & FOUNDATIONS
 - 2 DEMOLISH EXISTING DOCK CANOPY & SUPPORT COLUMN
 - 3 DEMOLISH EXISTING CONCRETE DOCK STAIRS AND RAILING
 - 4 DEMOLISH EXISTING WOOD LOADING DOCK & FOUNDATIONS
 - 5 ABANDON EXISTING AREA WELL SEAL OPENING AT SUBGRADE LEVEL. REPAIR AS REQUIRED FOR NEW DOCK FOUNDATIONS.
 - 6 REMOVE EXISTING DOOR AND FRAME
- DEMOLITION DETAILS:**
- 1 REMOVE EXISTING DOOR AND FRAME. REMOVE EXISTING DAMAGED RECESSED FLOOR CLOSERS WHERE PRESENT
 - 2 DEMOLISH EXISTING CONC. PAVING AS REQUIRED FOR NEW DOCK. SMOOTH NEATLY AT AREAS TO REMAIN
 - 3 DEMOLISH PORTION OF EXISTING PLASTER CEILING & FLOORING AS REQUIRED FOR NEW SPRINKLER WORK. SEE FIRE PROTECTION PLAN.
 - 4 DEMOLISH PORTION OF EXISTING CONC. FINISH AS REQUIRED FOR NEW STAIR FINISH. SMOOTH NEATLY AT AREAS TO REMAIN. RESTORE FINISH AFTER COMPLETION.

- SHEET GENERAL NOTES**
- A. SEE FIRE PROTECTION AND ELECTRICAL DRAWINGS FOR ADDITIONAL DETAIL INFORMATION.
- B. CONTRACTOR SHALL COORDINATE WITH DOCK CANOPY MFG. FOR ANY ADDITIONAL DETAIL INFORMATION REQUIRED FOR DOCK FINISH ATTACHMENT TO EXISTING BUILDING STRUCTURAL FRAME.
- C. REMOVE ANY EXISTING REBAR THAT WILL BE REJECTED OR OBSOLETE BY NEW CONSTRUCTION. SAVE FOR REUSE. REINSTALL PER THE DIRECTION OF PROJECT ENGINEER.
- D. CONTRACTOR IS RESPONSIBLE FOR MAINTAINING STABILITY OF EXISTING STRUCTURE DURING DEMOLITION.
- E. CONTRACTOR TO PROTECT EXISTING UTILITIES WHERE TO REMAIN. PROTECT DURING DEMOLITION AND RECONSTRUCTION. CONTRACTOR TO SUBMIT PROTECTION PLAN TO PROJECT ENGINEER FOR APPROVAL PRIOR TO WORK.
- F. CONTRACTOR SHALL REPAIR ANY ADJACENT WALLS & FLOORING DAMAGED DURING REMOVAL OF EXISTING DOOR FRAME.

		CONSULTANTS: K J W W ENGINEERING CONSULTANTS 2110 COLUMBIAN AVENUE, SUITE 100 CHICAGO, ILLINOIS 60601 T: 312-241-1111 FAX: 312-241-0003 www.kjww.com	ARCHITECT/ENGINEERS: COX DESIGN ASSOCIATES ARCHITECTURE PLANNING INTERIORS Chicago: 345 N. Canal St., Suite 701 Chicago, IL 60606 T: 312-698-3880 F: 312-454-9439 Austin: 5121 Bee Caves Road, Suite 203 Austin, Texas 78746 T: 512-327-4149 F: 512-327-7079	Approved: Assistant Director Approved: Senior Chief Approved: Chief Architect Approved: Chief of Staff Approved: Chief, EMS Approved: Chief, I&O Approved: Chief, Safety Approved: Chief Engineer Approved: Senior Chief Approved: Senior Project Manager Approved: Chief, Public Approved: Chief	Drawing Title: DOCK DEMOLITION PLAN Location: CAPTAIN JAMES A LOVELL F.H.C.C., NORTH CHICAGO, ILLINOIS	Project Name: LOADING DOCK REPLACEMENT BUILDING 134 Building Number: 134 Checked: RHC Drawn: PU	Project Number: 556-13-112 Date: 15 APRIL 2013 Drawing Number: AD-101 Dept. of	Office of Construction and Facilities Management
--	--	---------------------------------------------------------------------------------------------------------------------------------------------------------------------------------------	----------------------------------------------------------------------------------------------------------------------------------------------------------------------------------------------------------------------------------------------------------------------------------------	------------------------------------------------------------------------------------------------------------------------------------------------------------------------------------------------------------------------------------------------------------------------------------------------------------------------------------	-------------------------------------------------------------------------------------------------------------------------------	--------------------------------------------------------------------------------------------------------------------	---------------------------------------------------------------------------------------------------------	------------------------------------------------------

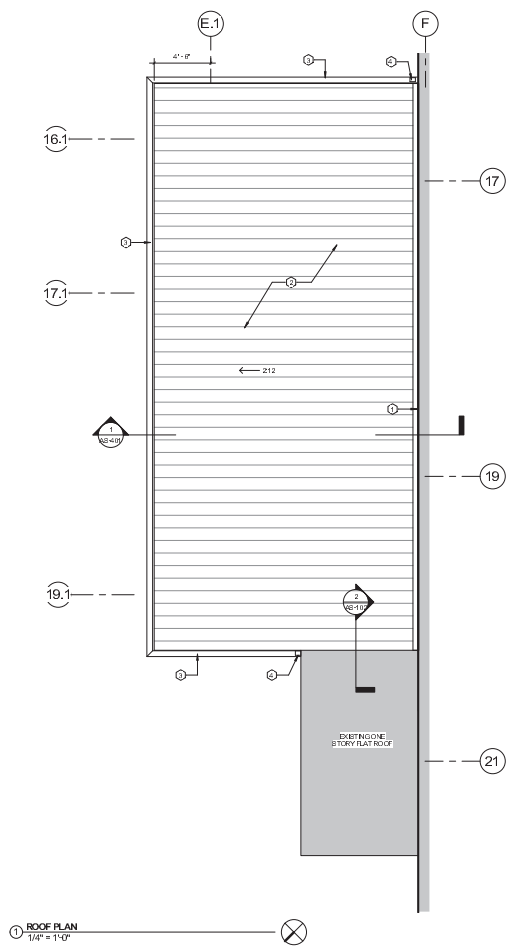
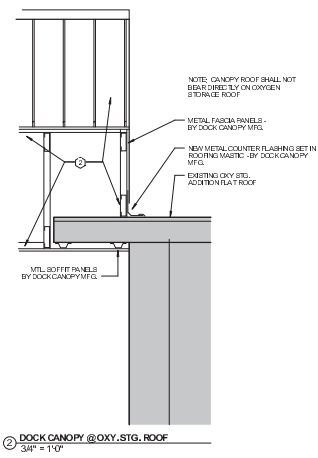


LOADING DOCK PLAN - NEW CONSTRUCTION
1/4" = 1'-0"

- SYMBOL LEGEND**
- ◻ EXISTING TO REMAIN
 - REVED NOTE
 - ◇ PARTITION TYPE
- SHEET KEY NOTES**
- ① STEEL SUPPORT COLUMN - PAINTED BY CANOPY MFG.
 - ② RETRACTABLE EDGE PROTECTION SYSTEM W/SUPPORT POSTS - BY CONTRACTOR.
- OBJECT & TERMINALS**
- DOCK LEVELER**
- ① NEW MASONRY INFILL AT DISMISSED DOOR OPENING AT FACE OF ROW/CONCRETE BACKUP - MATCH EXISTING PROVIDE METAL FINISH @ 5/8" O.C. & 3/4" DIA. REQ. MATCH EXISTING ADJACENT WALL CONDITION
 - ② CONCRETE CURB IN PLACE @ 1/2" EDGE ANGLE & 3/4" DIA. WITH REBAR @ 1/2"
- DOCK & TERMINALS**
- NEW REPLACEMENT DOOR & FRAME**
- ① 4"x8" RECTANGULAR M.T.L. DOWNPOUT BY DOCK CANOPY MFG.
 - ② CONNECT DOWNPOUT TO EXISTING STORM MANHOLE WITH 1/2" DIA. PVC UNDERGROUND PIPING
 - ③ HEAVY DUTY RUBBER CORNER GUARD - FULL HEIGHT OF PARTITION
 - ④ EXISTING STORM SEWER MANHOLE
 - ⑤ EXISTING BATTERY SEWER MANHOLE
 - ⑥ NEW FLOOR DRAIN - SEE PLUMBING DRAWINGS
- PARTITION TYPES**
- ◇ 3/8" P METAL STUD @ 12" O.C. W/ ONE LAYER 5/8" IMPACT RESISTANT GWB - EACH SIDE. SEE SHEET AS-901
- SHEET GENERAL NOTES**
- A. CONTRACTOR SHALL VERIFY ALL EXISTING CONDITIONS AND DIMENSIONS SHOWN PRIOR TO CONSTRUCTION.
 - B. CONTRACTOR SHALL RESTORE ALL FINISH REMOVED DURING CONSTRUCTION.
 - C. CONTRACTOR SHALL RESTORE ALL FLOORING & WALLS DAMAGED DURING DOOR FRAME REPLACEMENT.

		CONSULTANTS: ENGINEERING CONSULTANTS Experience you can build on. 211 SOUTH LA SALLE, SUITE 100 CHICAGO, IL 60606 T: 312-641-1111 FAX: 312-241-0803 www.ekw.com	ARCHITECT/ENGINEERS: COX DESIGN ASSOCIATES ARCHITECTURE PLANNING INTERIORS Chicago 345 N. Canal St, Suite 701 Chicago, IL 60606 T: 312-698-3880 F: 312-464-9439 Austin 5121 Bee Caves Road, Suite 203 Austin, Texas 78746 T: 512-327-4149 F: 512-327-7679	Approved: Assistant Director Approved: Senior Chief Approved: Chief, E&S Approved: Chief, IT Approved: Chief, Safety	Approved: Chief of Staff Approved: Senior Chief Approved: Chief, EMS Approved: Chief, I&O Approved: Chief	Approved: Chief Engineering Approved: Senior Chief Approved: Chief, Infrastructure Control Approved: Chief, I&O Approved: Chief	Drawing Title LOADING DOCK PLAN Location CAPTAIN JAMES A LOVELL F.H.C.C. NORTH CHICAGO, ILLINOIS	Project Name LOADING DOCK REPLACEMENT BUILDING 134 Building Number 134 Checked RHC Drawn PU	Project Number 556-13-112 Date 15 APRIL 2013 Drawing Number AS-101 Des. of	Office of Construction and Facilities Management
--	--	-------------------------------------------------------------------------------------------------------------------------------------------------------------------------------------------------	-------------------------------------------------------------------------------------------------------------------------------------------------------------------------------------------------------------------------------------------------------------------------------------	----------------------------------------------------------------------------------------------------------------------------------	-----------------------------------------------------------------------------------------------------------------------	---------------------------------------------------------------------------------------------------------------------------------------------	------------------------------------------------------------------------------------------------------------------------------------------	--------------------------------------------------------------------------------------------------------------------------------------------------	-------------------------------------------------------------------------------------------------------------------	-------------------------------------------------------------

1
2
3
4
5
6
7
8
9
A
B
C
D
E
F



SYMBOL LEGEND

- EXISTING TO REMAIN
- REVEYED NOTE

SHEET KEY NOTES

- ① ROOF TERMINATION FLASHING & COUNTER FLASHING BY DOCK CANOPY MFG.
- ② PRE-ENGINEERED STANDING BEAM METAL ROOF CANOPY SYSTEM - BY DOCK CANOPY MFG.
- ③ 2"X4" HEAVY DUTY MIL-BOX GUTTER BY CANOPY MFG.
- ④ 2"X4" RECTANGULAR MIL. DOWNPOUT BY DOCK CANOPY MFG.

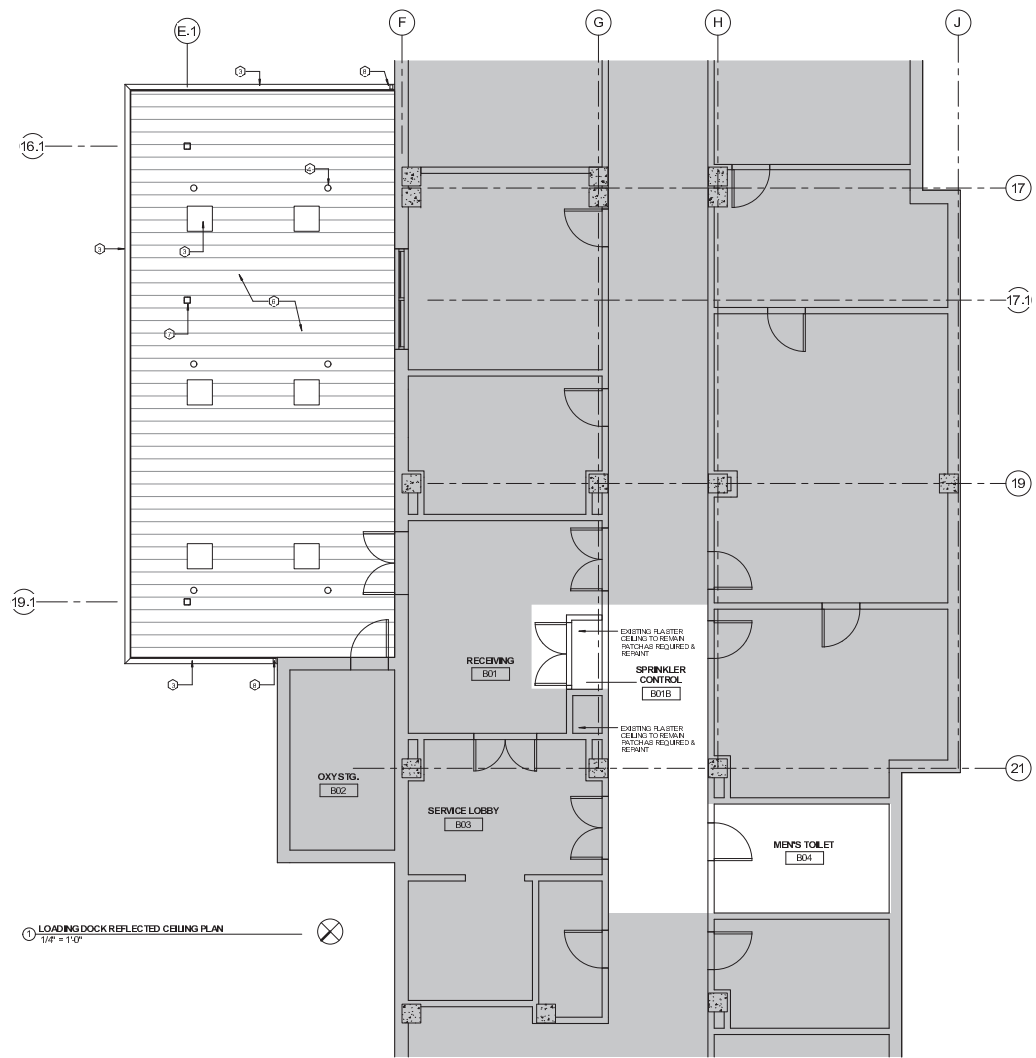
SHEET GENERAL NOTES

A. DOCK CANOPY MFG. TO PROVIDE PRE-ENGINEERED CANOPY SYSTEM IN CONFORMANCE WITH THE CONFIGURATION SHOWN. INCLUDE ALL ACCESSORIES: STRUCTURAL FRAMING, GUTTERS, DOWNPOUTS, AND FLASHINGS FOR COMPLETE INSTALLATION. DESIGN OF ROOFING, FLASHING, GUTTER & DOWNPOUT DETAIL BY DOCK CANOPY MFG.

DOCK CANOPY MFG. SHALL DESIGN ALL REQUIRED STRUCTURAL ROOF FRAMING CONNECTIONS TO EXISTING BUILDINGS CONCRETE STRUCTURAL FRAME.

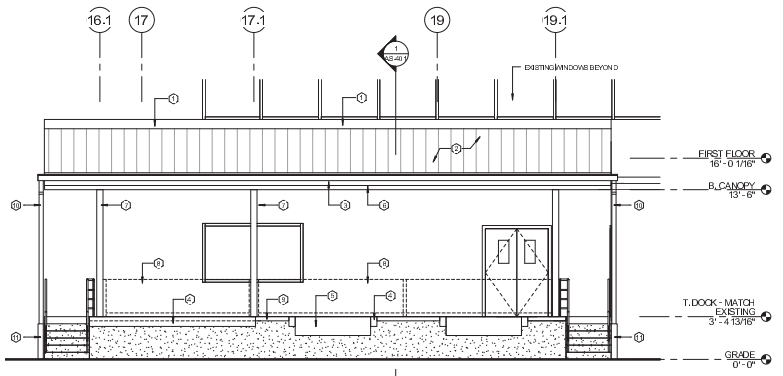
B. DOCK CANOPY SHALL BE ENTIRELY OF NON-COMBUSTIBLE MATERIALS.

		 CONSULTANTS: K J ENGINEERING CONSULTANTS 215 NORTH LAUREL, SUITE 100 CHICAGO, ILLINOIS 60610 312.584.8111 FAX: 312.264.0003 www.kjw.com		ARCHITECT/ENGINEERS: COX DESIGN ASSOCIATES ARCHITECTURE PLANNING INTERIORS Chicago: 345 N. Canal St., Suite 701 Chicago, IL 60606 T: 312-698-3880 F: 312-454-9439 Austin: 5121 Bee Caves Road, Suite 203 Austin, Texas 78746 T: 512-327-4149 F: 512-327-7879		Approved: Assistant Director Approved: Senior Chief Approved: Chief, E&S Approved: Chief, F Approved: Chief, Safety Approved: Chief of Staff Approved: Senior Chief Approved: Chief, EMS Approved: Chief, I&O Approved: Chief Approved: Chief, Engineering Approved: Senior Chief Approved: Chief, Maintenance Control Approved: Chief, Police Approved: Chief			Drawing Title LOADING DOCK ROOF PLAN & DETAILS Location CAPTAIN JAMES A. LOVELL F.H.C.C. NORTH CHICAGO, ILLINOIS		Project Name LOADING DOCK REPLACEMENT BUILDING 134 Building Number 134 Checked RHC Drawn PU		Project Number 556-13-112 Date 15 APRIL 2013 Drawing Number AS-102 Dwg. of	Office of Construction and Facilities Management Department of Veterans Affairs
--	--	--------------------------------------------------------------------------------------------------------------------------------------------------------------------------	--	----------------------------------------------------------------------------------------------------------------------------------------------------------------------------------------------------------------------------------------------------------------------------------------------------------	--	----------------------------------------------------------------------------------------------------------------------------------------------------------------------------------------------------------------------------------------------------------------------------------------------------------------------------------------------------------------------------------------------------------	--	--	--------------------------------------------------------------------------------------------------------------------------------------------------------------	--	------------------------------------------------------------------------------------------------------------------------------------------	--	-----------------------------------------------------------------------------------------------------	-----------------------------------------------------------------------------------------------------------------------------------------

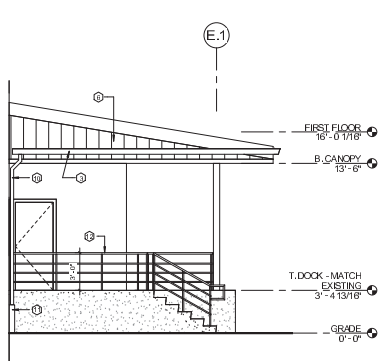


- SYMBOL LEGEND**
- ◻ EXISTING TO REMAIN
 - REVED NOTE
 - ◇ PARTITION TYPE
- SHEET KEY NOTES**
- ① NOT USED
 - ② FIRE ENGINEER DETAILING BEAM METAL ROOF CANOPY SYSTEM BY DOCK CANOPY MFG.
 - ③ 8\"/>
- SHEET GENERAL NOTES**
- A. SEE ELECTRICAL RUMING AND THE PROTECTION DRAWINGS FOR ADDITIONAL CEILING INFORMATION.

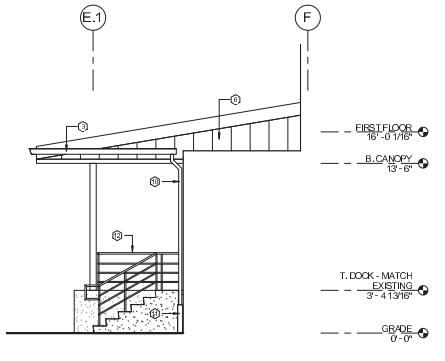
		CONSULTANTS: ENGINEERING CONSULTANTS 2110 O'FALLON BLVD., SUITE 100 CHICAGO, ILLINOIS 60614 T: 312-641-1111 FAX: 312-264-0033 www.kjw.com	ARCHITECT/ENGINEERS: COX DESIGN ASSOCIATES ARCHITECTURE PLANNING INTERIORS Chicago: 345 N. Canal St., Suite 701 Chicago, IL 60606 T: 312-698-3880 F: 312-454-9439 Austin: 5121 Bee Caves Road, Suite 203 Austin, Texas 78746 T: 512-327-4149 F: 512-327-7679	Approved: <i>[Signature]</i> Director Approved: <i>[Signature]</i> Senior Chief Approved: <i>[Signature]</i> Chief, EHS Approved: <i>[Signature]</i> Chief, IT Approved: <i>[Signature]</i> Chief, Safety	Approved: <i>[Signature]</i> Chief of Staff Approved: <i>[Signature]</i> Senior Chief Approved: <i>[Signature]</i> Chief, EMS Approved: <i>[Signature]</i> Chief, I&O Approved: <i>[Signature]</i> Chief	Approved: <i>[Signature]</i> Chief, Engineering Approved: <i>[Signature]</i> Senior Chief Approved: <i>[Signature]</i> Chief, Information Control Approved: <i>[Signature]</i> Chief, Police Approved: <i>[Signature]</i> Chief	Drawing Title: DOCK REFLECTED CEILING PLAN Location: CAPTAIN JAMES A. LOVELL F.H.C.C., NORTH CHICAGO, ILLINOIS	Project Name: LOADING DOCK REPLACEMENT BUILDING 134 Building Number: 134 Checked: RHC Drawn: PUJ	Project Number: 556-13-112 Date: 15 APRIL 2013 Drawing Number: AS-201 Des. of:	Office of Construction and Facilities Management Department of Veterans Affairs
--	--	----------------------------------------------------------------------------------------------------------------------------------------------------------------------------	----------------------------------------------------------------------------------------------------------------------------------------------------------------------------------------------------------------------------------------------------------------------------------------	-----------------------------------------------------------------------------------------------------------------------------------------------------------------------------------------------------------------------	----------------------------------------------------------------------------------------------------------------------------------------------------------------------------------------------------------------------	---------------------------------------------------------------------------------------------------------------------------------------------------------------------------------------------------------------------------------------------	-------------------------------------------------------------------------------------------------------------------------------------------	-------------------------------------------------------------------------------------------------------------------------	---------------------------------------------------------------------------------------------------	---------------------------------------------------------------------------------------------------



1 WEST ELEVATION
1/4" = 1'-0"



2 NORTH ELEVATION
1/4" = 1'-0"



3 SOUTH ELEVATION
1/4" = 1'-0"

SYMBOL LEGEND

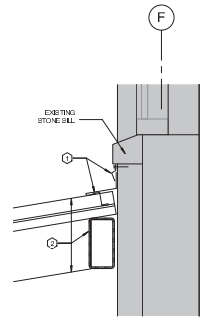
○ REVED NOTE

SHEET KEY NOTES

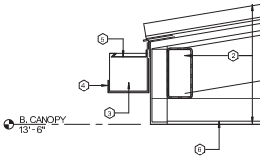
- 1 ROOF TERMINATION FLASHING & COUNTER FLASHING AT EXISTING MASONRY WALL - BY DOCK/CANOPY MFG.
- 2 STANDING BEAM METAL ROOF CANOPY SYSTEM & STEEL SUPPORT FRAMING - BY DOCK/CANOPY MFG.
- 3 6"X6" HEAVY DUTY METAL BOX GUTTER BY CANOPY MFG.
- 4 DOCK BUMPER
- 5 HYDRAULIC DOCK LEVELER
- 6 METAL FASCIA PANELS - BY CANOPY MFG.
- 7 STEEL SUPPORT COLUMN - PAINTED BY CANOPY MFG.
- 8 EDGE PROTECTION SYSTEM W/ SUPPORT POSTS BY GENERAL CONTRACTOR
- 9 CONTINUOUS CAST IN PLACE STL. EDGE ANGLE PARTIALLY WITH REBAR STEEL
- 10 4"X6" RECTANGULAR METAL DOWNPOUT BY DOCK/CANOPY MFG.
- 11 STAINLESS STEEL DOWNPOUT ROOF W/ CLEANOUT CONNECT TO EXISTING UNDERGROUND STEEL DRAIN
- 12 STEEL GUARD RAIL SYSTEM - PAINTED 1 1/2" DIA. STEEL POSTS @ 5'-0" ON CENTER SET IN CORED HOLES WITH EPOXY ANCHORS 4" DIA. 1 1/2" DIA. STD. PIPE RAILS

SHEET GENERAL NOTES

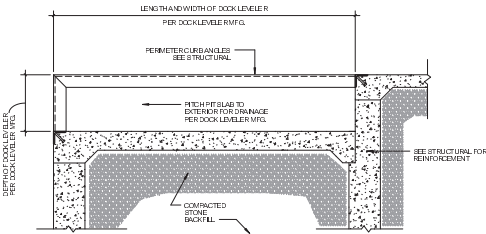
		CONSULTANTS: K J W ENGINEERING CONSULTANTS 2111 COTTAGE PLACE, SUITE 100 CHICAGO, ILLINOIS 60614 T: 312-941-1111 FAX: 312-264-0033 www.kjw.com		ARCHITECT/ENGINEERS: COX DESIGN ASSOCIATES ARCHITECTURE PLANNING INTERIORS Chicago 345 N. Canal St., Suite 701 Chicago, IL 60606 T: 312-698-8880 F: 312-454-9439 Austin 5121 Bee Caves Road, Suite 203 Austin, Texas 78746 T: 512-327-4149 F: 512-327-7679		Approve: Assistant Director Approve: Senior Chief Approve: Chief Architect Approve: Chief, FT Approve: Chief, Safety		Approve: Chief of Staff Approve: Senior Chief Approve: Chief, EMS Approve: Chief, I&O Approve: Chief		Approve: Chief Engineering Approve: Senior Chief Approve: Chief, Information Control Approve: Chief, Police Approve: Chief		Drawing Title ELEVATIONS		Project Name LOADING DOCK REPLACEMENT BUILDING 134		Project Number 556-13-112		Date 15 APRIL 2013		Office of Construction and Facilities Management	
										Location CAPTAIN JAMES A. LOVELL F.H.C.C. NORTH CHICAGO, ILLINOIS		Building Number 134		Checked RHC		Drawn PU		Drawing Number AS-301		Department of Veterans Affairs	
												Design of									



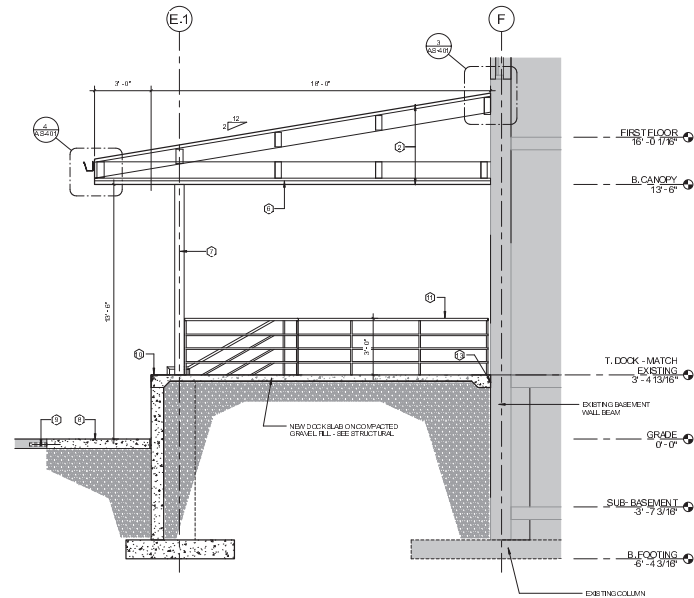
3 CANOPY ROOF @ EXISTING MASONRY WALL
1:12" = 1'-0"



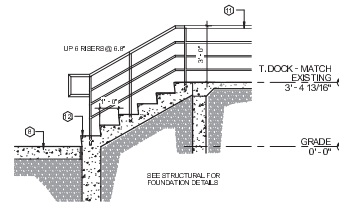
4 GUTTER DETAIL
1:12" = 1'-0"



2 TYP. SECTION AT DOCK LEVELER FIT
3'-6\"/>



1 LOADING DOCK SECTION
3'-8\"/>



6 TYP. DOCK STAR SECTION
3'-8\"/>

SYMBOL LEGEND

- EXISTING TO REMAIN
- REVED NOTE

SHEET KEY NOTES

- 1 ROOF TERMINATION FLASHING & COUNTER FLASHING BY DOCK CANOPY MFG.
- 2 STANDING BEAM METAL ROOF SYSTEM & STEEL SUPPORT FRAMING - BY DOCK CANOPY MFG.
- 3 NEW HEAVY DUTY METAL BOX GUTTER BY CANOPY MFG.
- 4 HEAVY DUTY EXTRUDED SUPPORT BRACKET BY CANOPY MFG.
- 5 HEAVY DUTY EXTRUDED METAL INTERNAL STRAP BY CANOPY MFG.
- 6 METAL SOFFIT PANELS - BY CANOPY MFG.
- 7 STEEL SUPPORT COLUMN - PAINTED BY CANOPY MFG.
- 8 RESTORE CONCRETE PAVING AT DEMOLISHED AREA. MATCH EXISTING THICKNESS. PROVIDE NEW COMPACTED GRANULAR FILL AS NOTED. PROVIDE PRECAST CURB FILLER STRIP AT NEW DOCK FOUNDATION.
- 9 PRECAST GABLS - 1/2\"/>

SHEET GENERAL NOTES

- A. DOCK CANOPY MFG. TO PROVIDE PRE-ENGINEERED CANOPY SYSTEM IN CORP DRAWING WITH SIZE & CONFIGURATION SHOWN AND INCLUDE ALL REQUIRED STRUCTURAL FRAMING, GUTTERS, DOWNPOUTS, AND FLASHINGS FOR COMPLETE INSTALLATION. PROVIDE FOOTING, FLASHING, GUTTER & DOWNPOUT DETAILS BY DOCK CANOPY MFG. SEE STRUCTURAL SHEET FOR CANOPY DESIGN LOADS.
- B. DOCK CANOPY SHALL BE ENTIRELY OF NON-COMBUSTIBLE MATERIALS.
- C. ALL CANOPY STRUCTURAL CONNECTIONS TO BUILDING MUST BE MADE AT CASTING CONCRETE STRUCTURAL FRAME ONLY. DESIGN OF CONNECTIONS BY DOCK CANOPY MFG. NO STRUCTURAL FRAMING SHALL BEAR ON EXISTING MASONRY WALLS.



CONSULTANTS:

ENGINEERING CONSULTANTS
 Experience you can build on™
 215 NORTH LAUREL, SUITE 100
 CHICAGO, ILLINOIS 60602
 773.394.6101 FAX 773.264.0033
 www.kjww.com

ARCHITECT/ENGINEERS:

COX DESIGN ASSOCIATES
 ARCHITECTURE PLANNING INTERIORS
 Chicago 345 N. Canal St., Suite 701 Chicago, IL 60606 T: 312-698-3880 F: 312-454-9439
 Austin 5121 Bee Caves Road, Suite 203 Austin, Texas 78746 T: 512-327-4149 F: 512-327-7679

Approved: Joseph J. Dunbar	Approved: Chair of Staff	Approved: Chief Engineering
Approved: Sarah A. O'Neil	Approved: Sarah A. O'Neil	Approved: Sarah A. O'Neil
Approved: Chair, BLS/Arch	Approved: Chair, BLS	Approved: Chair, Infrastructure Control
Approved: Chair, EIT	Approved: Chair, BLS/O	Approved: Chair, Police
Approved: Chair, Safety	Approved: Chair	Approved: Chair

Drawing Title: SECTIONS & DETAILS

Location: CAPTAIN JAMES A. LOVELL F.H.C.C., NORTH CHICAGO, ILLINOIS

Project Name: LOADING DOCK REPLACEMENT BUILDING 134

Project Number: 556-13-112

Date: 15 APRIL 2013

Building Number: 134

Checked: RHC

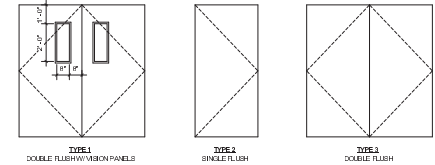
Drawn: PUJ

Dwg. of: **AS-401**

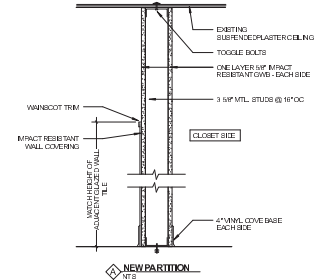
Office of Construction and Facilities Management

Department of Veterans Affairs

DOOR SCHEDULE								Comments
DOOR NUMBER	PAIR TYPE	WIDTH	HEIGHT	MATERIAL	FRAME MATERIAL	HARDWARE GROUP	ASSEMBLY RATING	
B01	1	5'-0"	7'-0"	HM	HM	HW-2		INSULATED CORE. EXISTING OPENING - VERIFY SIZE IN FIELD
B01A	1	5'-0"	7'-0"	HM	HM	HW-3		DEDUCT ALT #2. EXISTING OPENING - VERIFY SIZE IN FIELD
B01B	3	5'-0"	7'-0"	HM	HM	HW-5		
B02	2	3'-0"	7'-0"	HM	HM	HW-1		INSULATED CORE. EXISTING OPENING - VERIFY SIZE IN FIELD
B03	1	5'-0"	7'-0"	HM	HM	HW-3		DEDUCT ALT #2. EXISTING OPENING - VERIFY SIZE IN FIELD
B03A	1	5'-0"	7'-0"	HM	HM	HW-4		DEDUCT ALT #2. EXISTING OPENING - VERIFY SIZE IN FIELD



DOOR TYPES
3/8" = 1'-0"



Horizontal dimension lines on the left side of the drawing, with labels such as '3'-0"', '5'-0"', and '7'-0"' indicating door dimensions.



CONSULTANTS:
K J ENGINEERING CONSULTANTS
W W
 Experience you can build on.
 2110 O'FALLON AVENUE, SUITE 100
 CHICAGO, ILLINOIS 60614
 TEL: 312.264.9111 FAX: 312.264.9093
 www.kjw.com

ARCHITECT/ENGINEERS:
COX DESIGN ASSOCIATES
 ARCHITECTURE PLANNING INTERIORS
 Chicago 345 N. Canal St, Suite 701 Chicago, IL 60606
 T: 312-698-3880 F: 312-484-9439
 Austin 5121 Bee Caves Road, Suite 203 Austin, Texas 78756
 T: 512-327-4149 F: 512-327-7879

Approved: Assistant Director	Approved: Chief of Staff	Approved: Chief Engineer
Approved: Senior Chief	Approved: Senior Chief	Approved: Senior Chief
Approved: Chief, Electrical	Approved: Chief, EHS	Approved: Chief, Information Control
Approved: Chief, IT	Approved: Chief, HR/O	Approved: Chief, Public
Approved: Chief, Safety	Approved: Chief	Approved: Chief

Drawing Title: DOOR SCHEDULE & DETAILS
 Location: CAPTAIN JAMES A. LOVELL F.H.C.C., NORTH CHICAGO, ILLINOIS

Project Name: LOADING DOCK REPLACEMENT BUILDING 134
 Project Number: 556-13-112
 Date: 15 APRIL 2013
 Drawing Number: **AS-501**

Building Number: 134	Checked: RHC	Drawn: PUJ

Office of Construction and Facilities Management
 Department of Veterans Affairs