

- KEYNOTES:**
1. DISCONNECT AND RELOCATE EXISTING DOOR OPERATOR AND ASSOCIATED WIRING. VERIFY THAT DEVICES ARE IN GOOD WORKING CONDITION, CLEAN, RENEW ALL AND RECONNECT INTO EXISTING CIRCUITS. REMOVE AND REPLACE EXISTING KEY SWITCHES. PROVIDE NEW WIRING AND EXTEND CONDUIT. COORDINATE WORK WITH ARCHITECT.
  2. SENSER TO CONTROL DOCK LIGHTING WIRE PER MANUFACTURER WIRING DIAGRAM.
  3. REPLACE EXISTING MANUAL OVERRIDE ON NEW SWITCH FOR LOADING DOCK LIGHTING WITH NEW. PROVIDE ASSOCIATED WIRING AND CONDUIT.
  4. PROVIDE NEW PANELBOARD AND ASSOCIATED FEEDER CONNECT INTO EXISTING DEADSPARE CIRCUIT BREAKER IN PANEL DA. FIELD COORDINATE NEW PANEL LOCATION.
  5. INSTALL DOCK LEVELERS PUSHBUTTON CONTROL STATION PROVIDED BY MANUFACTURER. PROVIDE ALL WIRING AND CONDUIT. WIRE PER MANUFACTURER WIRING DIAGRAM.
  6. INSTALL DOOR OPERATORS AND PROVIDE ASSOCIATED WIRING, BONES AND CONDUITS. INSTALL PUSH PADS AND WIRE PER MANUFACTURER WIRING DIAGRAM. FIELD COORDINATE PUSH AND PADS LOCATION WITH OWNER/ARCHITECT.
  7. REPLACE EXISTING RECEPTACLE WITH GFI WATER RESISTANT TYPE. RECONNECT INTO EXISTING CIRCUIT.
  8. PROVIDE LOCAL DISCONNECT SWITCH FOR DRY FIRE ASSEMBLY.
- GENERAL NOTES:**
1. FOR SYMBOLS, NOTES AND SCHEDULES REFER TO SHEET E-100.
  2. ELECTRICAL DEVICES SHALL BE CONNECTED INTO PANEL LA UNLESS OTHERWISE NOTED.

**1** **LOADING DOCK DEMOLITION PLAN-ELECTRICAL**  
1/4" = 1'-0"

**2** **LOADING DOCK NEW WORK PLAN-POWER**  
1/4" = 1'-0"

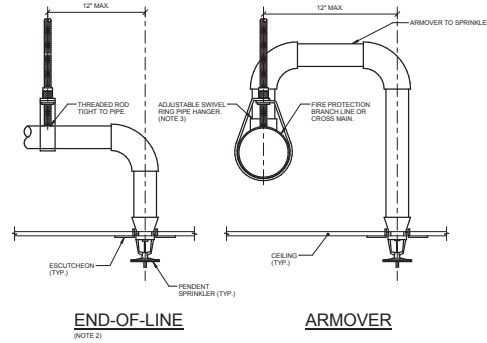
**3** **LOADING DOCK NEW WORK PLAN-LIGHTING**  
1/4" = 1'-0"

<b>CONSULTANTS:</b> 		<b>ARCHITECT/ENGINEERS:</b> <b>COX DESIGN ASSOCIATES</b> ARCHITECTURE PLANNING INTERIORS Chicago 345 N. Canal St, Suite 701 Chicago, IL 60606 T: 312-698-3380 F: 312-454-9439		Approved: Assistant Director Approved: Service Chief Approved: Chief, Bio-Med Approved: Chief, IT Approved: Chief, Safety		Approved: Chief of Staff Approved: Service Chief Approved: Chief, EMS Approved: Chief, M&O Approved: Chief		Approved: Chief, Engineering Approved: Service Chief Approved: Chief, Infection Control Approved: Chief, Police Approved: Chief		Drawing Title <b>ELECTRICAL DEMOLITION &amp; NEW WORK PLANS</b>		Project Name <b>LOADING DOCK REPLACEMENT BUILDING 134</b>		Project Number 556-13-112 086 15 APRIL 2013		Office of Construction and Facilities Management	
Revisions:				Approved: Chief, IT Approved: Chief, Safety		Approved: Chief, M&O Approved: Chief		Drawing Number <b>E-101</b> Desg. 2 of 2		Building Number 134		Checked AKG		Drawn SP			

### FIRE SPRINKLER USAGE SCHEDULE

AREA TYPE (NOTE 1 & 6)	AREA HAZARD	SPRINKLER				TEMPERATURE °F	MANUFACTURER & MODEL	REMARKS
		SYMBOL (NOTES 4 & 5)	TYPE	RESPONSE	FINISH			
DRY RECESSED PENDENT		QUICK	CHROME PLATED	175	VIKING VK, RELIABLE F30R, TYCO US, VICTALUC V2688	NOTES 2, 3, 7	VIKING VK, RELIABLE F1, TYCO US, VICTALUC V2787	NOTES 3

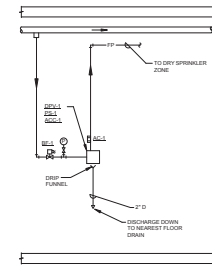
- NOTES:**
- SEE FLOOR PLANS FOR ZONING REQUIREMENTS.
  - SPRINKLER SHALL HAVE COLOR CODED BULB THERMAL ELEMENT.
  - ALL SPRINKLERS SHALL BE UL AND FM LISTED.
  - CONTRACTOR TO VERIFY SPRINKLER REQUIREMENTS BASED ON ACTUAL INSTALLATION, USAGE, ARCHITECTURAL CEILING PLAN AND NFPA 13 REQUIREMENTS.
  - SYMBOL IS PRIMARILY FOR IDENTIFYING SPRINKLERS IN SUBMITTALS. IT MAY OR MAY NOT BE FOUND ELSEWHERE ON THE DRAWINGS. CONTRACTOR TO SUBMIT ALL SPRINKLER TYPES TO BE USED.
  - AREAS ARE GENERAL IN NATURE. CONTRACTOR TO MATCH UNSCHEDULED AREAS TO SIMILAR SPACES.
  - SPRINKLERS SHALL HAVE A 3min QUICK RESPONSE BULB.



**END-OF-LINE**  
(NOTE 2)

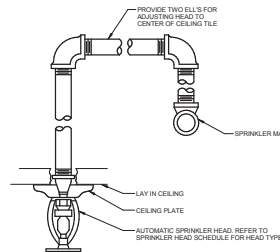
**ARMOVER**

- NOTES:**
- THIS DETAIL APPLIES TO SPRINKLER PIPES ABOVE CEILING THAT SUPPLY PENDENT SPRINKLERS BELOW CEILING WHERE THE WATER PRESSURE EXCEEDS 100 PSIG (STATIC OR RESIDUAL).
  - ALSO APPLIES TO ARMOVER WHERE CUMULATIVE HORIZONTAL LENGTH IS GREATER THAN 12\".
  - CLEVIS HANGERS AND ADJUSTABLE SWIVEL RING HANGERS WITH BURGE SUPPRESSORS ARE ALSO ACCEPTABLE. SEE NFPA 13.



**3 FIRE PROTECTION RISER DIAGRAM**  
NO SCALE

**1 SPRINKLER PIPE HANGER DETAIL**  
12\"/>

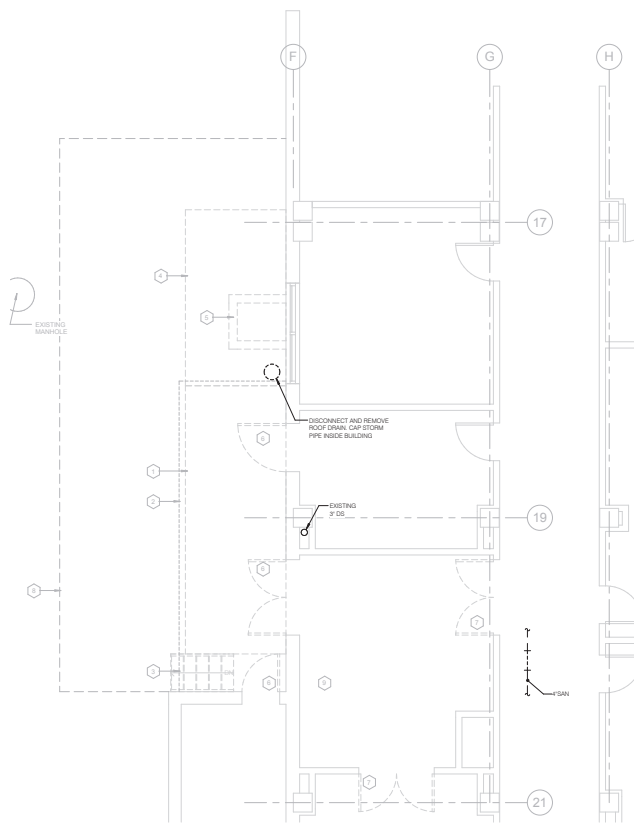


**2 SPRINKLER HEAD MOUNTING DETAIL**  
12\"/>

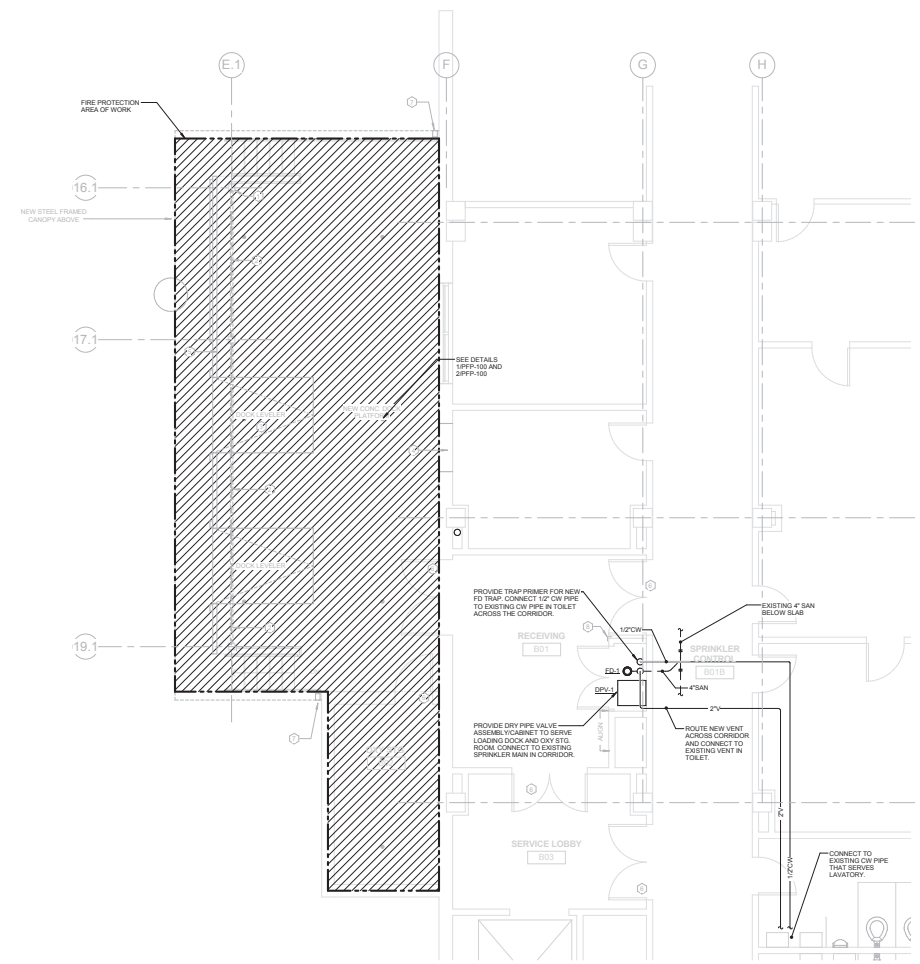
FIRE PROTECTION MATERIAL LIST	
<p>THE SYMBOLS AND THE MATERIAL LIST ARE FOR THE CONFORMANCE OF THE CONTRACTOR. CONTRACTOR SHALL VERIFY QUANTITIES AND FURNISH ALL MATERIALS REQUIRED FOR FULLY OPERATIONAL SYSTEMS, UNLESS OTHERWISE SPECIFIED OR NOT.</p> <p>CATALOG NUMBERS SHALL NOT BE CONSIDERED COMPLETE, BUT ARE GIVEN AS AN AID TO THE CONTRACTOR AND TO VERIFY THE QUALITY REQUIREMENTS. CONTRACTOR IS RESPONSIBLE FOR COMPLETE DESCRIPTION OF MATERIAL ON THESE DRAWINGS AND IN THE SPECIFICATIONS BEFORE ORDERING. THE DESCRIPTION OF THE MATERIAL, MAKE AND REFERENCE OVER THE CATALOG NUMBER, THE FIRST LISTED MANUFACTURER IS THE BASIS OF DESIGN.</p>	
<b>SC1</b>	<p><b>DESCRIPTION:</b> RUBBER MOUNT AIR COMPRESSOR, OIL-LESS, UL 2105 LISTED, RUBBER TIGHT AIR CHECK VALVE, OIL-FREE WITH COMPRESSOR, 1/2HP MOTOR, UNIVERSAL, RUBBER MOUNT HT, COMPRESSOR SHALL COMPLY TO FEMA 353 REQUIREMENTS AND HAVE CAPACITY FOR RESTORING NORMAL AIR PRESSURE IN THE SYSTEM WITHIN 30 MINUTES.</p> <p><b>ELECTRICAL REQUIREMENTS:</b> 120/220 POWER CONNECTION</p> <p>INCLUDED AS PART OF DPV1 ASSEMBLY</p> <p><b>MANUFACTURER &amp; CATALOG NO.:</b> GAST H48-117 ANEX, GENERAL AIR PRODUCTS CO, SERIES, OR PRE-APPROVED EQUAL.</p>
<b>SC2</b>	<p><b>DESCRIPTION:</b> 7\"/&gt; <p><b>MANUFACTURER &amp; CATALOG NO.:</b> GEN 8000P, TYCO BPI, KENNEDY OI, NESCO LEMSA, GEAR-ON, VICTALUC, F50W, KENNEDY</p> </p>
<b>SC3</b>	<p><b>DESCRIPTION:</b> 1\"/&gt; <p><b>MANUFACTURER &amp; CATALOG NO.:</b> MALLORKE 88-SCS OR APPROVED EQUAL.</p> </p>
<b>SC4</b>	<p><b>DESCRIPTION:</b> ACCELERATOR, PILOT OPERATED, 2500 GALLON MAXIMUM SYSTEM CAPACITY, AUTOMATIC RESET, BUILT IN WITH FLOOD ASSEMBLY, UL/FM</p> <p>INCLUDED AS PART OF DPV1 ASSEMBLY</p> <p><b>MANUFACTURER &amp; CATALOG NO.:</b> RELIABLE B1 OR APPROVED EQUAL BY VIKING, TYCO.</p>
<b>SC5</b>	<p><b>DESCRIPTION:</b> SELF CONTAINED DRY PIPE VALVE SYSTEM, 2\"/&gt; <p><b>MANUFACTURER &amp; CATALOG NO.:</b> RELIABLE DDX-LP OR APPROVED EQUAL BY VIKING, TYCO, VICTALUC.</p> </p>
<b>SC6</b>	<p><b>DESCRIPTION:</b> PRESSURE SWITCH 4 - 20 PSIG RANGE, NPT CONNECTION, 1.5 PSIG DIFFERENTIAL, DUAL SINGLE POLE DOUBLE THROW CONTACT SWITCHES, METAL WATER TIGHT NEMA 4 HOUSING, EXPLOSION PROOF, WIPES PERIODICALLY OPEN/CLOSED, UL/FM</p> <p>INCLUDED AS PART OF DPV1 ASSEMBLY</p> <p><b>MANUFACTURER &amp; CATALOG NO.:</b> POTTER P510-EX</p>

<b>CONSULTANTS:</b>  KJWW ENGINEERING CONSULTANTS 215 N. LAUREL ST. SUITE 200 CHICAGO, IL 60610 T: 312-467-8800 F: 312-467-8801 WWW.KJWW.COM	<b>ARCHITECT/ENGINEERS:</b>  <b>COX DESIGN ASSOCIATES</b> ARCHITECTURE PLANNING INTERIORS Chicago: 345 N. Canal St, Suite 701 Chicago, IL 60606 T: 312-698-3880 F: 312-454-9439 Austin: 5121 Bee Caves Road, Suite 203 Austin, TX 78746 T: 512-327-4149 F: 512-327-7679	Approved: Assistant Director Approved: Service Chief Approved: Chief, Bio-Med Approved: Chief, IT Approved: Chief, Safety	Approved: Chief of Staff Approved: Service Chief Approved: Chief, EMS Approved: Chief, M&O Approved: Chief	Approved: Chief, Engineering Approved: Service Chief Approved: Chief, Infection Control Approved: Chief, Police Approved: Chief	Drawing Title <b>PLUMBING / FIRE PROTECTION COVER SHEET</b>	Project Name <b>LOADING DOCK REPLACEMENT BUILDING 134</b>	Project Number 556-13-112 15 APRIL 2013	Office of Construction and Facilities Management 
		Approved: Chief, Fire Approved: Chief, Security	Approved: Chief, Fire Approved: Chief, Security	Drawing Number <b>FP-100</b> Day 2 of 2				

FIRE PROTECTION SYMBOLS LIST	
SYMBOL	DESCRIPTION
	ORDINARY GROUP 1
	SPRINKLER
	PIPE DOWN
	VENT
	UNDERFLOOR PIPING



**1** **LOADING DOCK DEMOLITION PLAN (PLUMBING/FIRE PROTECTION)**  
1/4" = 1'-0"



**2** **LOADING DOCK NEW WORK PLAN (PLUMBING/FIRE PROTECTION)**  
1/4" = 1'-0"

<b>CONSULTANTS:</b>  215 N. LAUREL STREET, SUITE 200 CHICAGO, IL 60610 T: 312-467-8800 F: 312-467-8801 WWW.KJWW.COM		<b>ARCHITECT/ENGINEERS:</b> <b>COX DESIGN ASSOCIATES</b> ARCHITECTURE PLANNING INTERIORS Chicago, IL 60606 Austin, Texas 78746 T: 312-698-3880 T: 512-327-4149 F: 312-454-9439 F: 512-327-7679		Approved: Assistant Director Approved: Service Chief Approved: Chief, Bio-Med Approved: Chief, IT Approved: Chief, Safety	Approved: Chief of Staff Approved: Service Chief Approved: Chief, EMS Approved: Chief, M&O Approved: Chief	Approved: Chief, Engineering Approved: Service Chief Approved: Chief, Infection Control Approved: Chief, Police Approved: Chief	Drawing Title <b>PLUMBING/FIRE PROTECTION PLANS</b>	Project Name <b>LOADING DOCK REPLACEMENT BUILDING 134</b>	Project Number 556-13-112 15 APRIL 2013	Drawing Number <b>PFP-101</b> Day 1 of 2	Office of Construction and Facilities Management
Revisions: _____ Date: _____				Approved: _____ Approved: _____ Approved: _____ Approved: _____		Location <b>CAPTAIN JAMES A. LOVELL F.H.C.C. NORTH CHICAGO, ILLINOIS</b>	Building Number <b>134</b>	Checked <b>JP</b>	Drawn <b>GS</b>		