

Veterans Affairs Medical Center

RENOVATE MENTAL HEALTH HALLS AND ROOMS - OM

Project Number 636-13-128

4101 Woolworth Avenue
Omaha, Nebraska 68105

GENERAL NOTES

1. THE CONTRACTOR SHALL INSPECT THE SITE, STUDY EXISTING CONDITIONS, REVIEW DRAWINGS AND SPECIFICATIONS
2. CONTRACTOR SHALL ADJUST FOR ACTUAL FIELD CONDITIONS AT NO ADDITIONAL EXPENSE TO THE OWNER
3. REFER TO STATEMENT OF BID FOR DETAILED AND FULL SCOPE OF WORK
4. INSTALL FIRE RETARDANT ZIP WALL OR 2 X 4 PARTITIONS WITH GYPSUM BOARD WHERE NEEDED TO ISOLATE WORK AREAS IN OCCUPIED SPACES.
5. PROVIDE NEGATIVE AIR MACHINE WITH HEPA FILTERS FOR WORK
6. RELOCATE ELECTRICAL AND COM/DATA AND PLUMBING AS NEEDED
7. PROTECT EXISTING STRUCTURE AND FINISHES FROM DAMAGE DURING CONSTRUCTION
8. ALL WORK SHALL COMPLY WITH APPLICABLE REGULATIONS, CODES AND ORDINANCES

SEE STATEMENT OF WORK /BID ITEMS AND PHASE PLANS

Index of Drawings:

- 1 G1.1 Cover Sheet and General Notes

Architectural/General Plans

- 2 A0.1 Phasing Plan
- 3 A1.1 8th Floor Plans
- 4 A1.2 10th Floor Plan
- 5 A1.3 11th Floor Plan

ELECTRICAL PLANS

- 6 E1.1 8th Floor Lighting and Electrical Plan
- 7 E1.2 10th Floor Lighting Plan
- 8 E1.3 11th Floor Lighting Plan

PHASING

CONDENSED LIST of BID ITEMS (SEE STATEMENT OF WORK)

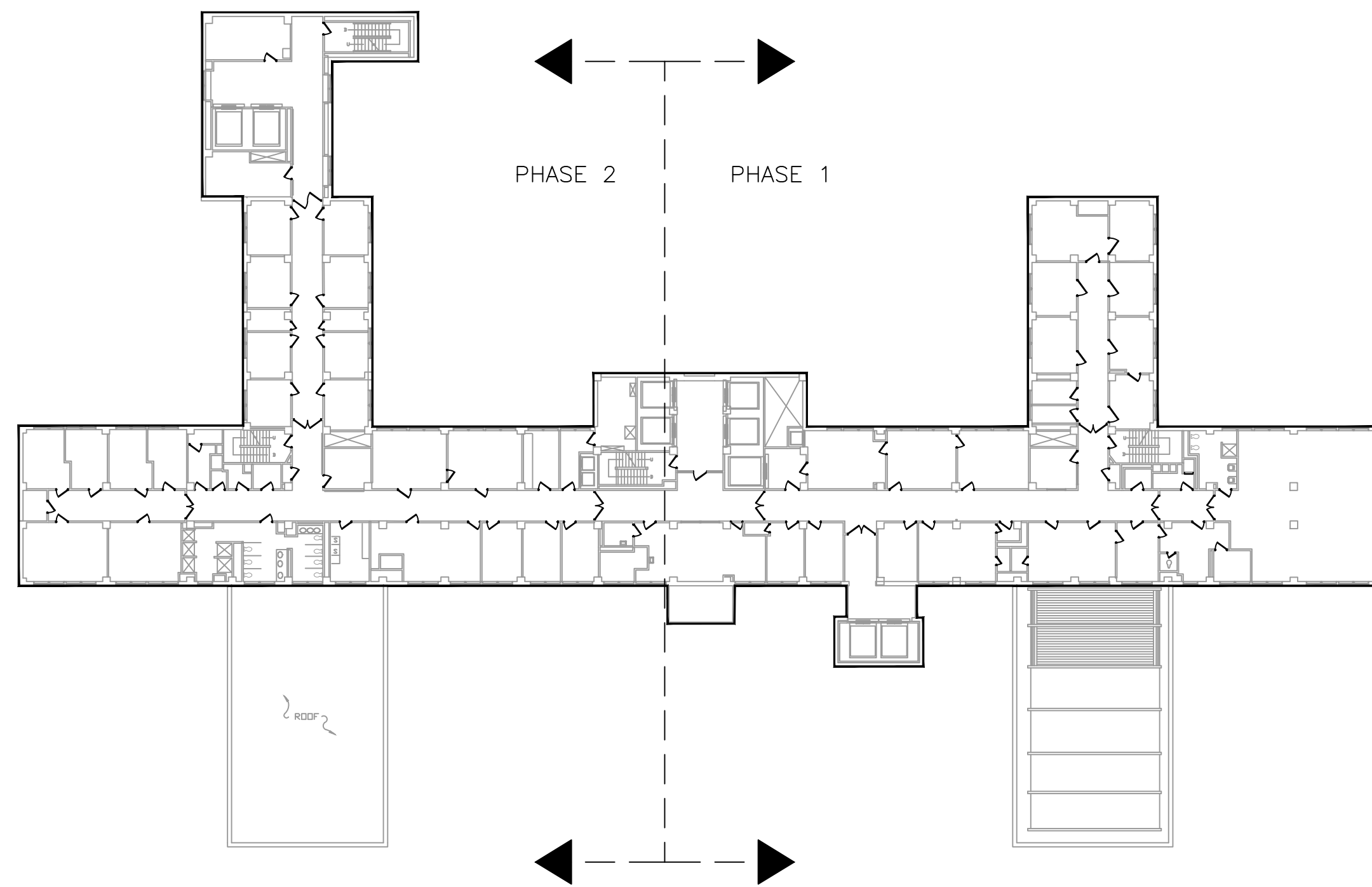
- BASE BID ITEM, GENERAL CONSTRUCTION: Refurbish hallway finishes on the 10th Floor -East & 11th Floor. Remove & replace existing wainscot material with Acrovyn wainscot. Prepare and apply new paint. Install new 12" CT wall tile in corridor niches. Replace PVC handrails with Oak handrails. Demo existing flooring and replace with carpet. Paint corridor door and (hallway) window frames.
- ADDITIVE BID ITEM 1, GENERAL CONSTRUCTION: Replace carpet, patch and repaint walls in 29 offices on the 8th Floor. Only three offices are available at one time for renovation.
- ADDITIVE BID ITEM 2, GENERAL CONSTRUCTION: Renovate two restrooms and room 8501 on 8th Floor west and room 10405 on the 10th Floor.
- ADDITIVE BID ITEM 3, GENERAL CONSTRUCTION: Abate Vinyl Asbestos Tile (VAT) and asbestos containing mastic in office rooms and Halls on the 10th & 11th Floor where indicated. Abate/encapsulate any VAT and asbestos containing mastic disturbed by construction activities.
- ADDITIVE BID ITEM 4, GENERAL CONSTRUCTION: Replace existing hallway light fixture lenses. Remove VAT & mastic in Elevator Lobby 10003 and replace with VCT & cove base. Abate VAT & Mastic and Install 12" ceramic tile floor in lobby to Roof Sun Deck area on 10th Floor.

SEE STATEMENT OF WORK for FULL INFORMATION

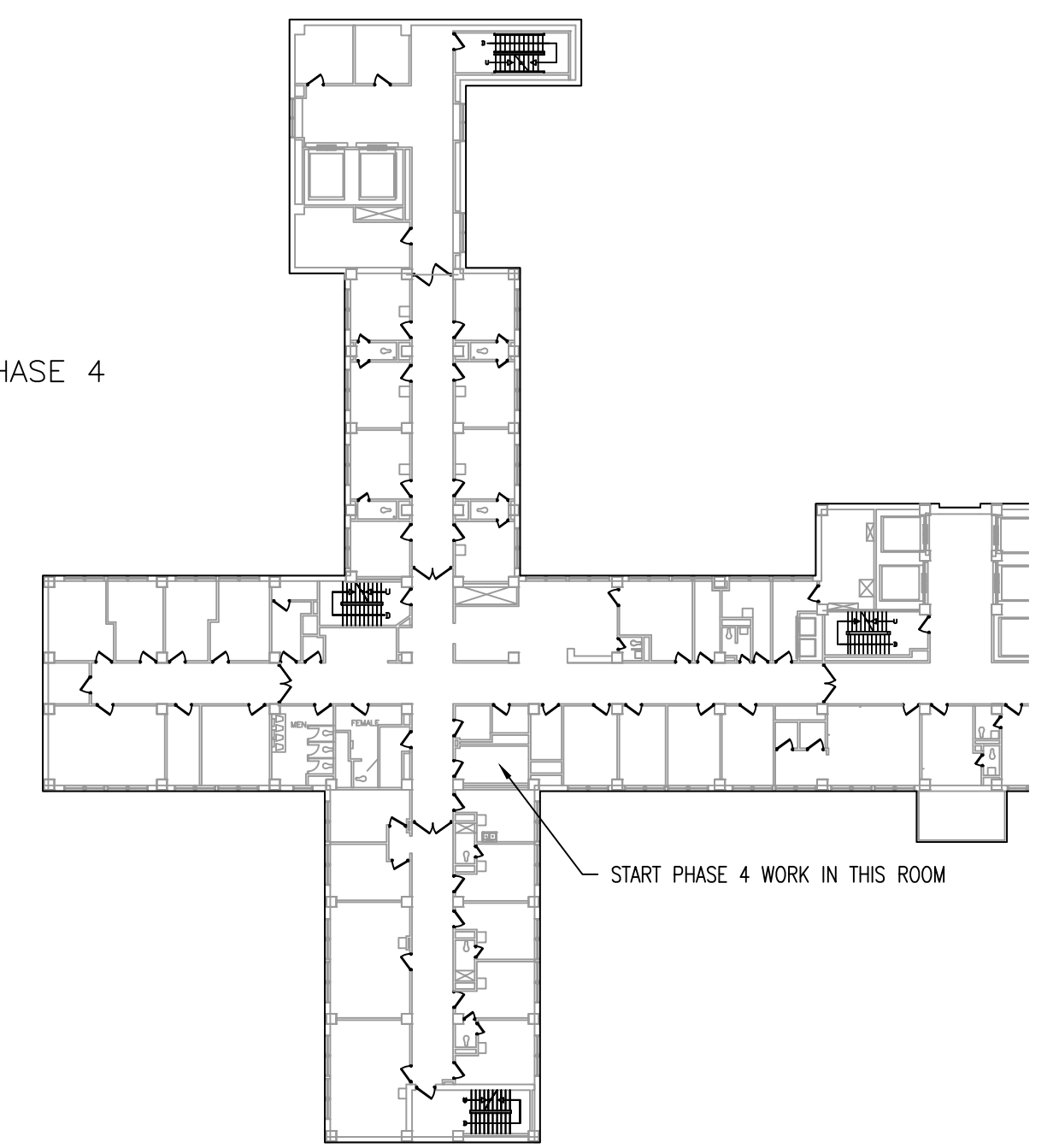
Revisions	Date

Concur: Requesting Service Karl Bealer	Drawing Title COVER SHEET	Project Title RENOVATE MENTAL HEALTH HALLS AND ROOMS - OM	Building Number ONE
Concur: Safety & Fire Protection -	AutoCad Drawing File Name: -	Date 3/21/2013	Project No. 636-13-128
Concur: IRM Information & Technology -	Approved Facilities Operation Support Manager AGM	Checked RM	Drawn GLS
		Location VAMC OMAHA, NE.	DRAWING NO. G1.1
			Dwg. 1 of 8

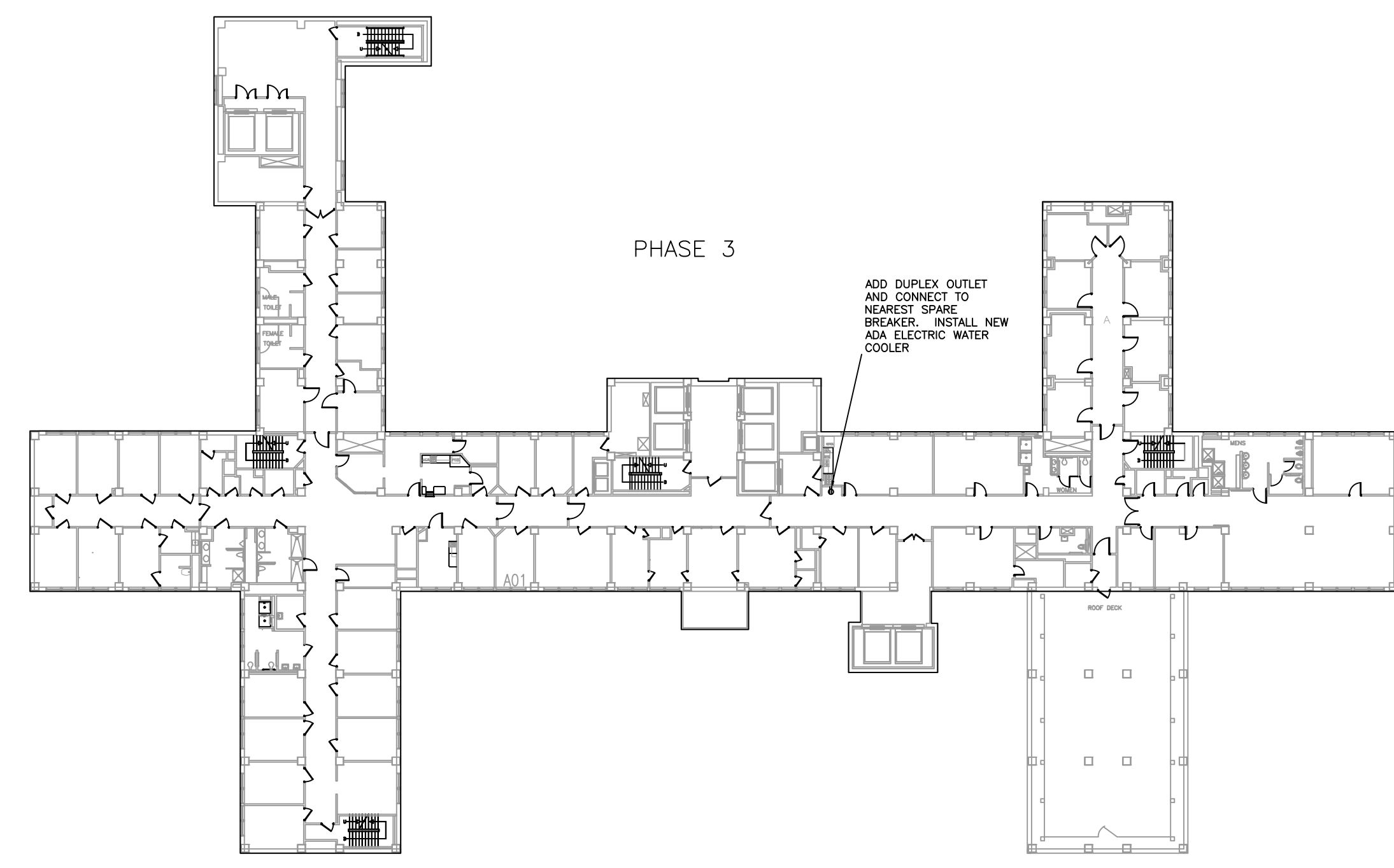




1 11TH FLOOR PHASING PLAN
SCALE: NTS



3 8TH FLOOR PHASING PLAN
SCALE: NTS



2 10TH FLOOR PHASING PLAN
SCALE: NTS

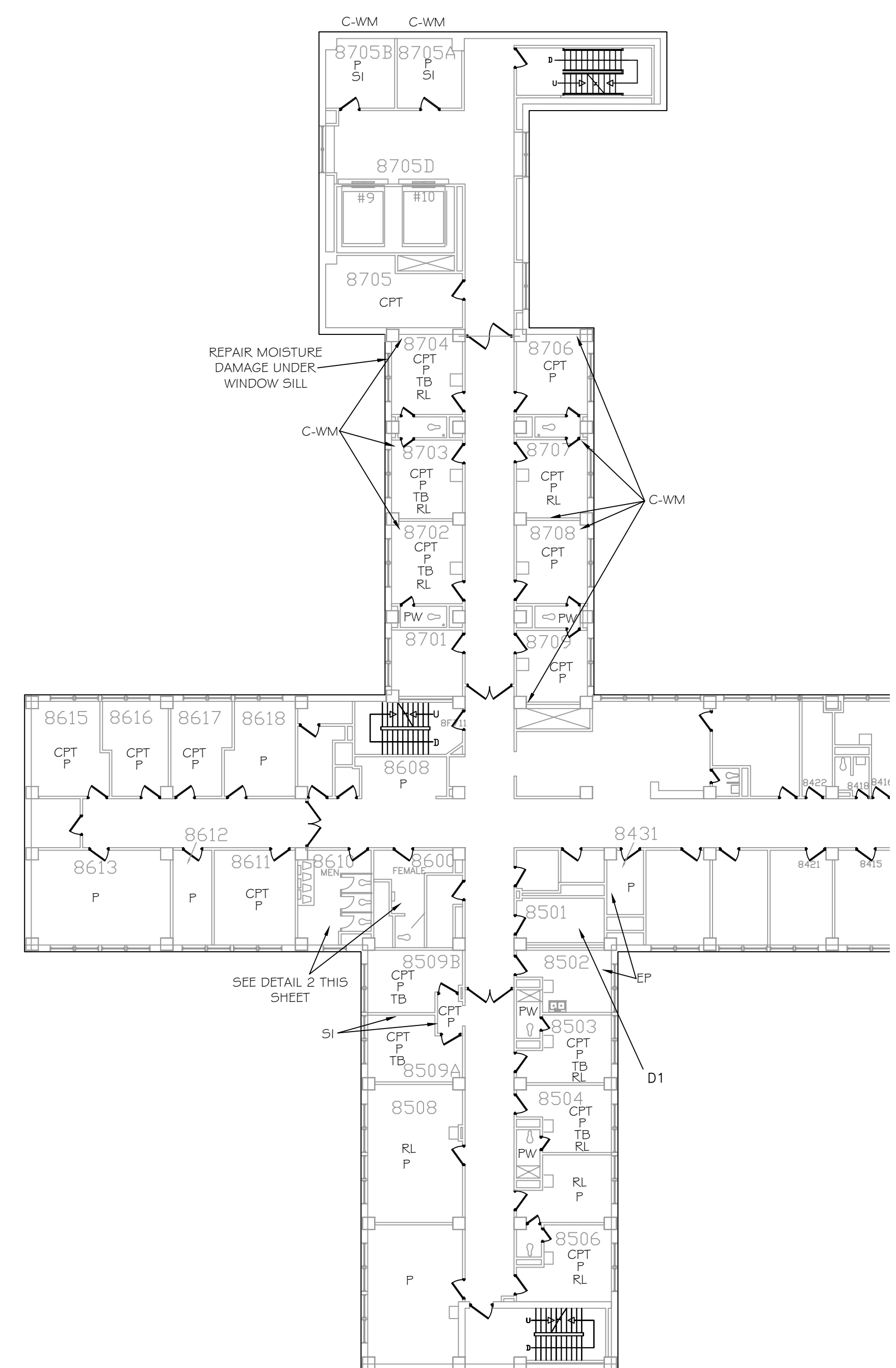
PHASING NOTE:
EACH PHASE WILL BE FULLY COMPLETED PRIOR TO BEGINNING WORK ON NEXT PHASE

Revisions	Date

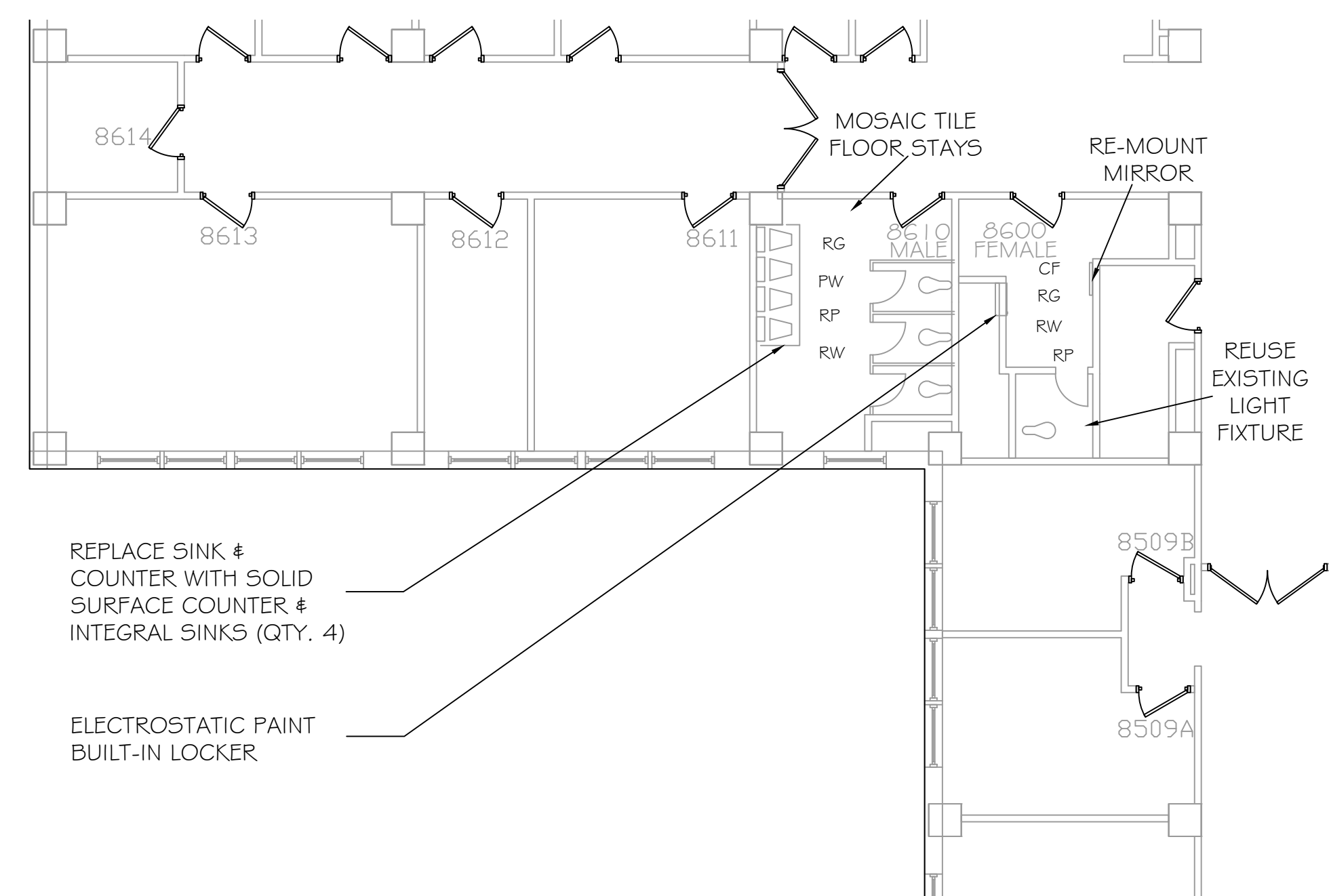
Concur: Requesting Service Kari Bealer	Drawing Title PHASING PLANS	Project Title RENOVATE MENTAL HEALTH ROOMS AND HALLS - OM	Building Number ONE
Concur: Safety & Fire Protection -	AutoCad Drawing File Name: -	Date 3/21/2013	Project No. 636-13-128
Concur: IRM Information & Technology -	Approved Facilities Operation Support Manager AGM	Checked RM	Drawn GLS
		Location VAMC OMAHA, NE.	DRAWING NO. A0.1
			Dwg. 2 OF 8



three inches = one foot
 one and one-half inches = one foot
 one inch = one foot
 one inch = one foot
 three-quarters inch = one foot
 one-half inch = one foot
 one-quarter inch = one foot
 one-eighth inch = one foot



1 PARTIAL 8TH FLOOR PLANS (BID ALT 1)
 SCALE: 1/16" = 1'



2 PARTIAL 8TH FLOOR PLANS (BID ALT 2)
 SCALE: 1/8" = 1'

NOTES LEDGEND:

- CPT: REMOVE & REPLACE CARPET
- P: REPAIR ANY DAMAGE & REPAINT WALL
- C-WM: CONCEAL WIRE MOLD INSIDE WALL & PATCH/PAINT
- EP: ELECTROSTATIC PAINT METAL CABINETS
- TB: TERRAZZO COVE BASE PRESENT - COVER WITH CARPET TILES & TERMINATION STRIP
- PW: PAINT WALL ABOVE CERAMIC WAINSCOT
- SI: SOUND INSULATION PUMPED INTO
- RP: REMOVE TOILET PARTITIONS & REPLACE WITH MATCHING CONFIGURATION
- RG: REPLACE GRID CEILING TO MATCH HALLWAY
- RW: DEMO 4" CERAMIC TILE, REPAIR WALL, & COVER WITH 1/2" CERAMIC TILE
- CF: ABATE AND REMOVE VAT AND MASTIC, PREP FLOOR, & INSTALL 2"X2" MOSAIC TILE (BID ALT 2)
- RL: REMOVE OVER-SINK LIGHT FIXTURE & SWITCH. COVER J BOX AND SWITCH BOX WITH APPROVED COVER PLATE
- D1: (BID ALT 2)
 - DEMO METAL CABINETS AND COUNTER TOPS
 - DEMO URINAL SINK AND CYCLO-FLUSH, CAP LINES
 - INSTALL NEW HAND-WASH SINK
 - LAMINATE 1/2" GYPSUM BOARD TO ALL WALLS AND PAINT

GENERAL NOTES THIS PHASE:

1. START WORK IN ROOM 8501 FIRST
2. A MAXIMUM OF 3 OFFICES MAY BE REMODELED AT ANY TIME

Revisions	Date

Concur: Requesting Service Karl Bealer	Drawing Title 8TH FLOOR PLANS	Project Title RENOVATE MENTAL HEALTH ROOMS AND HALLS - OM	Building Number ONE
Concur: Safety & Fire Protection -	AutoCad Drawing File Name: -	Date 3/21/2013	Project No. 636-13-128
Concur: IRM Information & Technology -	Approved Facilities Operation Support Manager AGM	Checked RM	Drawn GLS
		Location VAMC OMAHA, NE.	DRAWING NO. A1.1
			Dwg. 3 of 8



NOTES LEDGEND:

CG: NEW CORNER GUARD- FULL HEIGHT

EWC: ADA ELECTRIC WATER COOLER

PWC: PROTECTIVE WALL COVERING ((EXTEND PWC ALL THE WAY TO THE FLOOR SO NOT TO TELEGRAPH THROUGH BASE COVE)

CPT: REMOVE & REPLACE CARPET

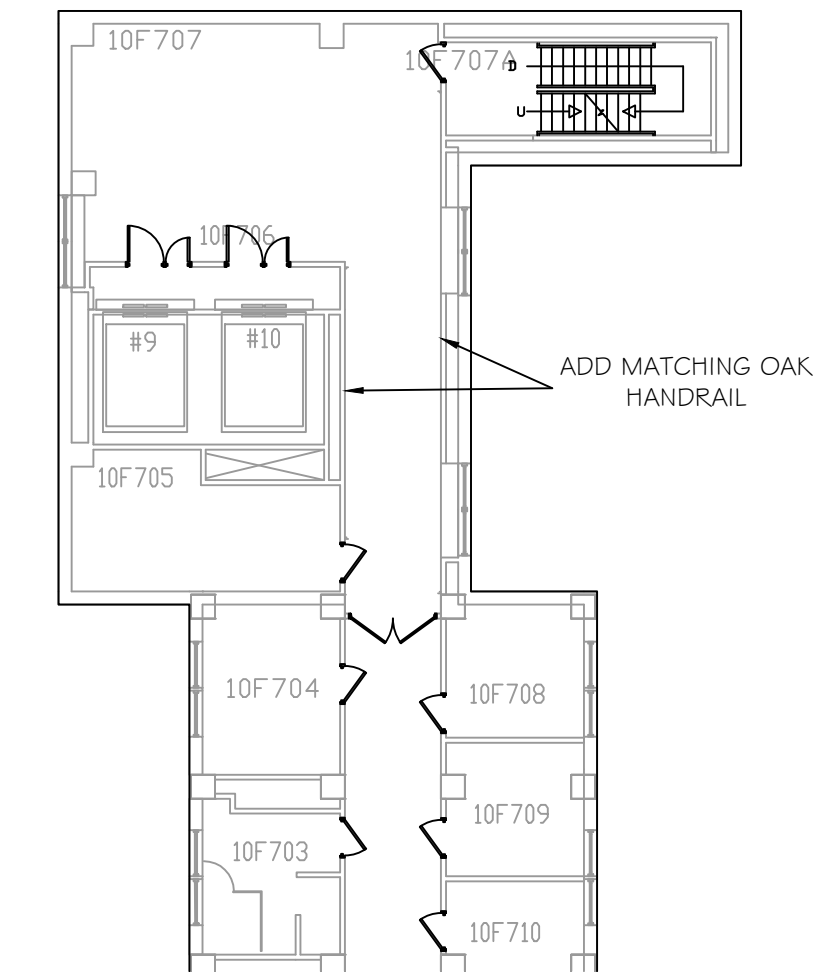
P: REPAIR ANY DAMAGE & REPAINT WALL

CWT: 12" X 12" CERAMIC WALL TILE

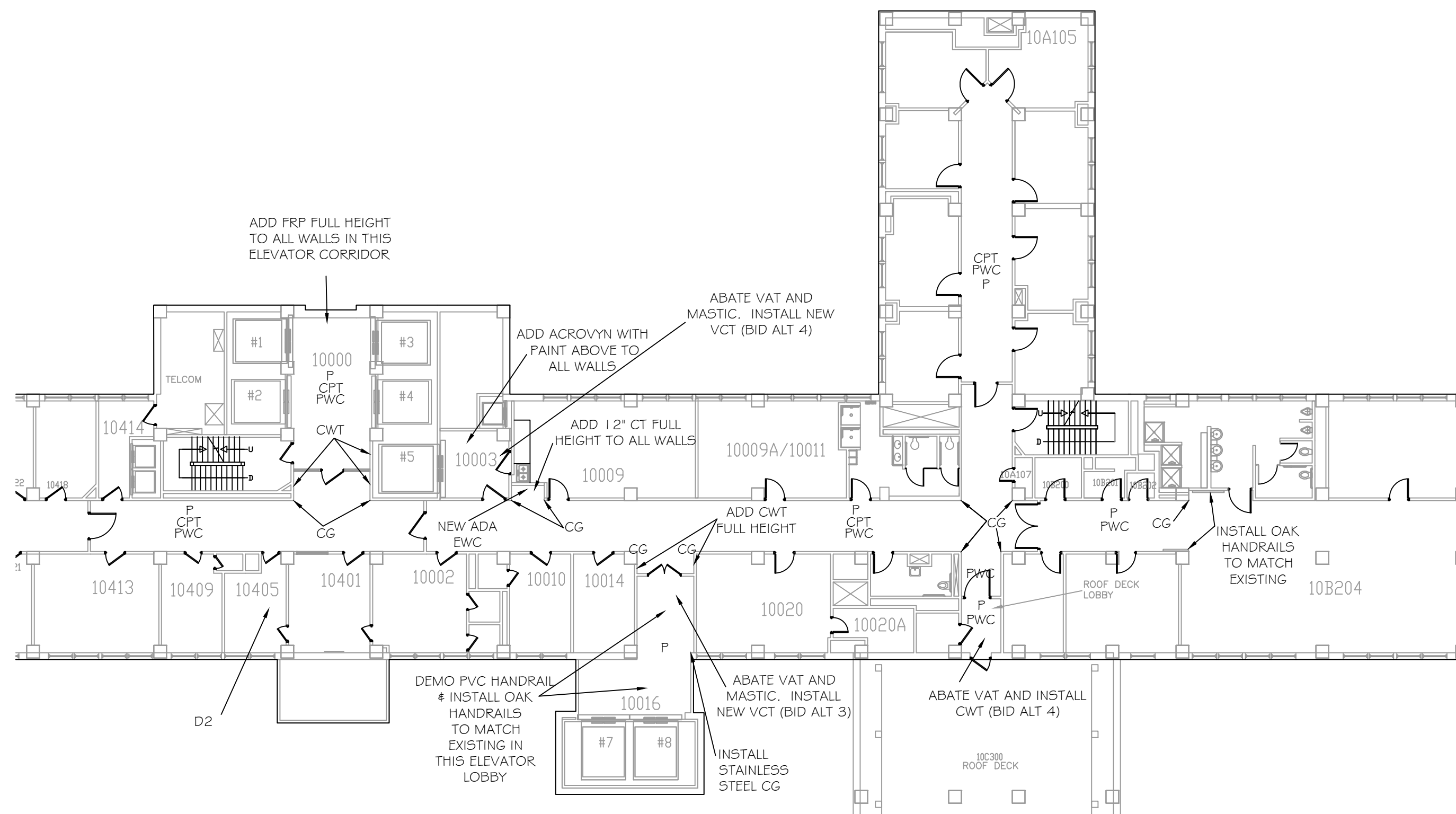
D2: ROOM 10405 (ONLY) (BID ALT 2)
 - DEMO METAL CABINETS & BASE
 - ABATE VAT
 - RECESS WIRING & DEVICES
 - ADD 1/2" GYP TO ALL WALLS
 - PAINT WALLS
 - ADD CARPET AND BASE

GENERAL NOTES:

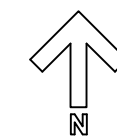
1. ALL HOLLOW METAL DOORS, JAMBS, AND SERVICE COUNTER WINDOW JAMBS TO BE PAINTED
2. REMOVE & REPLACE ALL ARTWORK, BULLETIN BOARDS, & MARKER BOARDS, ETC



2 PARTIAL 10TH FLOOR PLAN
 SCALE: 1/16" = 1'

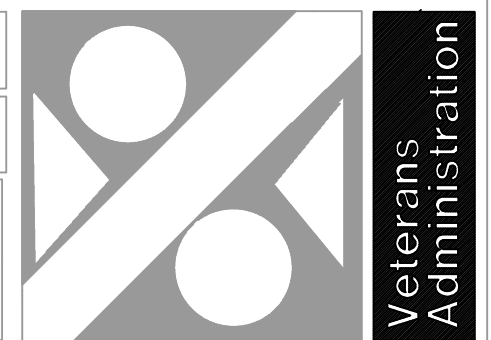


1 PARTIAL 10TH FLOOR PLAN
 SCALE: 1/16" = 1'

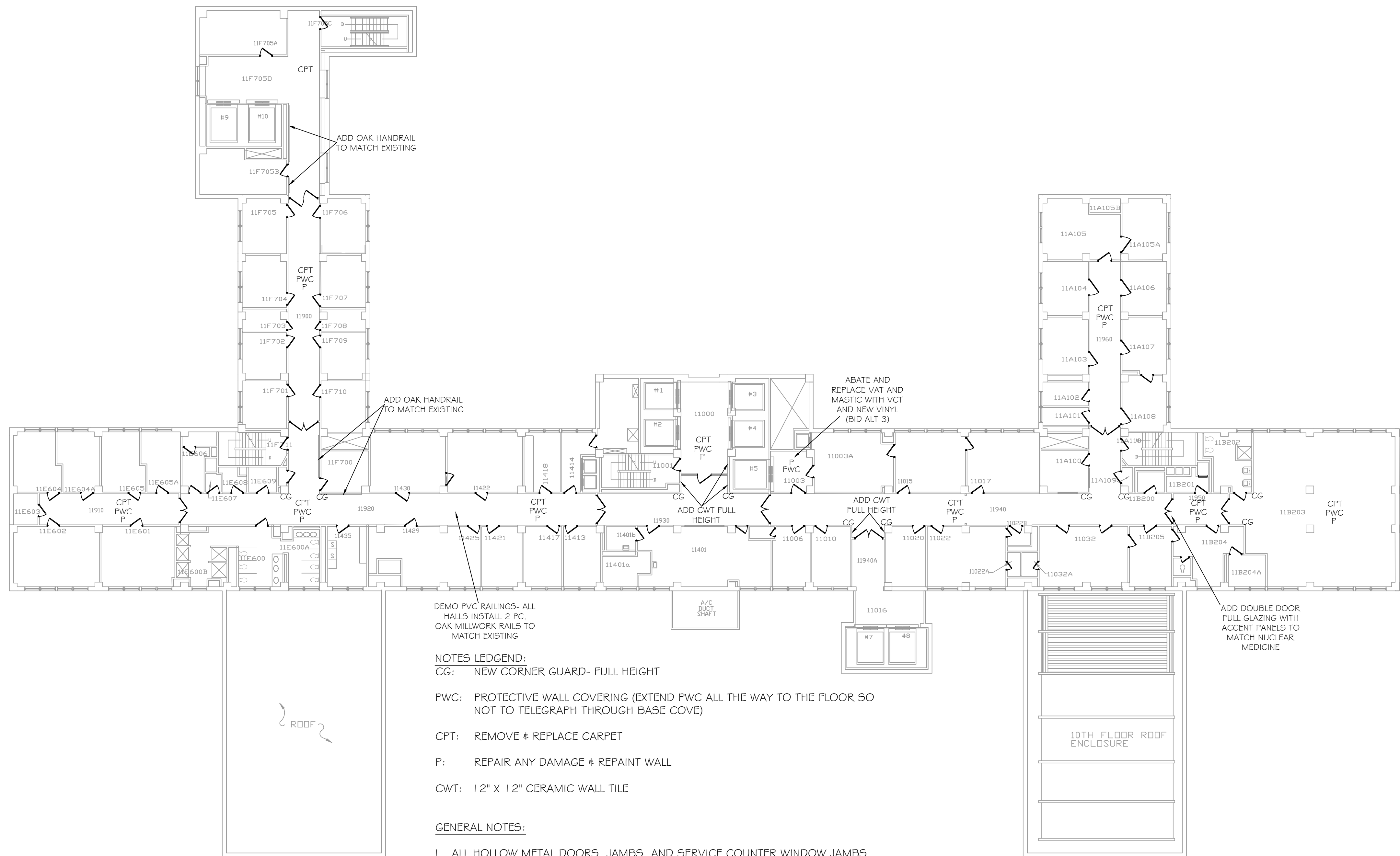


Revisions	Date

Concur: Requesting Service Kari Bealer	Drawing Title 10TH FLOOR PLAN	Project Title RENOVATE MENTAL HEALTH HALLS AND ROOMS - OM	Building Number ONE
Concur: Safety & Fire Protection	AutoCad Drawing File Name:	Date 3/21/2013	Project No. 636-13-128
Concur: IRM Information & Technology	Approved Facilities Operation Support Manager AGM	Checked RM	Drawn GLS
		Location VAMC OMAHA, NE.	DRAWING NO. A1.2
			Dwg. 4 of 8



Veterans Administration



DEMO PVC RAILINGS- ALL HALLS INSTALL 2 PC. OAK MILLWORK RAILS TO MATCH EXISTING

NOTES LEDGEND:
CG: NEW CORNER GUARD- FULL HEIGHT

PWC: PROTECTIVE WALL COVERING (EXTEND PWC ALL THE WAY TO THE FLOOR SO NOT TO TELEGRAPH THROUGH BASE COVE)

CPT: REMOVE & REPLACE CARPET

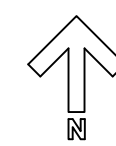
P: REPAIR ANY DAMAGE & REPAINT WALL

CWT: 12" X 12" CERAMIC WALL TILE

GENERAL NOTES:

1. ALL HOLLOW METAL DOORS, JAMBS, AND SERVICE COUNTER WINDOW JAMBS TO BE PAINTED
2. REMOVE & REPLACE ALL ARTWORK, BULLETIN BOARDS, # MARKER BOARDS, ETC

11th FLOOR PLAN
SCALE: 1/16" = 1'

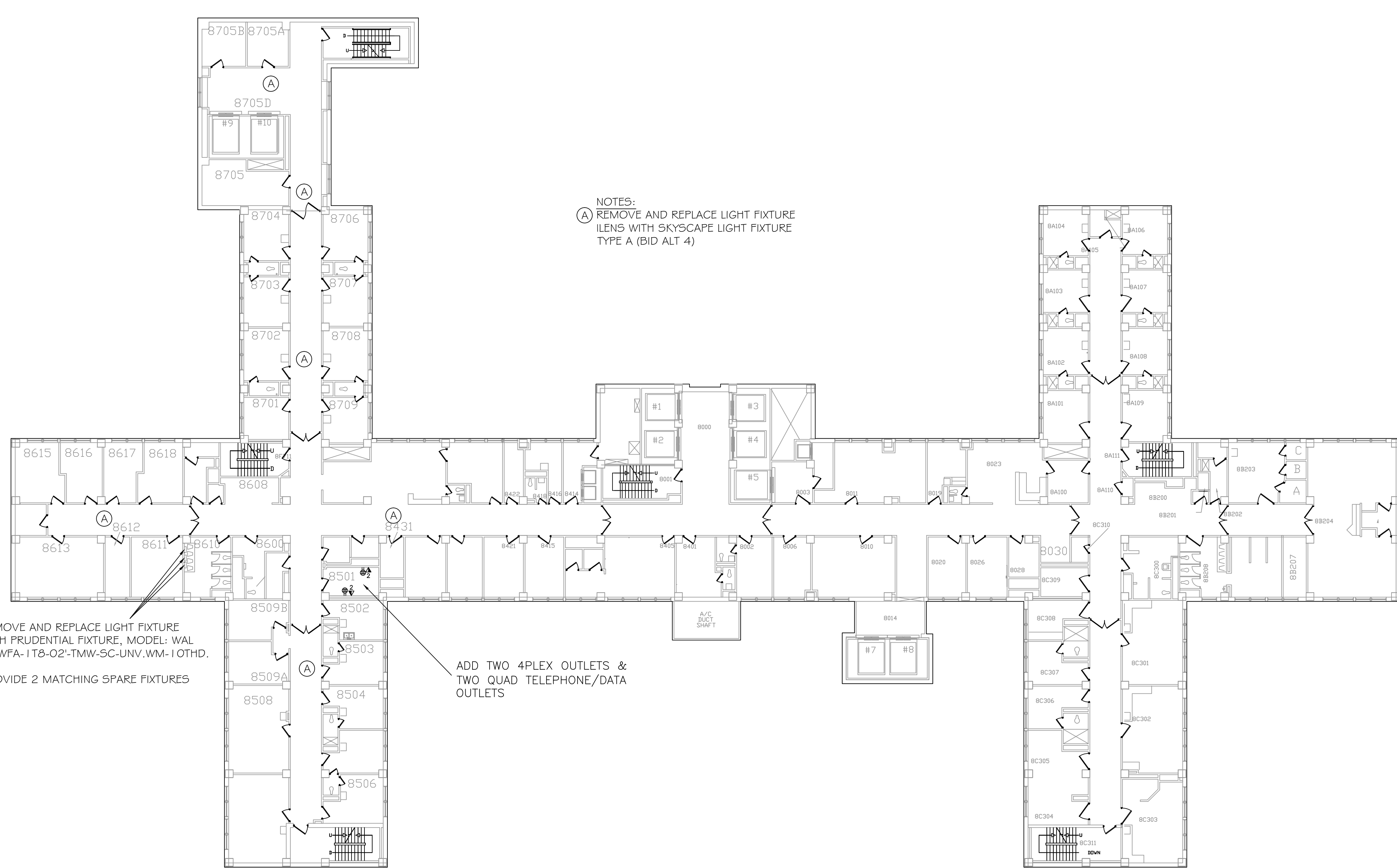


Revisions	Date

Concur: Requesting Service Kari Bealer	Drawing Title 11TH FLOOR PLAN	Project Title RENOVATE MENTAL HEALTH HALLS AND ROOMS - OM		Building Number ONE
Concur: Safety & Fire Protection -	AutoCad Drawing File Name: -	Date 3/21/2013	Checked RM	Drawn GLS
Concur: IRM Information & Technology -	Approved Facilities Operation Support Manager AGM	Location VAMC DMAHA, NE.		Project No. 636-13-128
				DRAWING NO. A1.3
				Dwg. 5 of 8



three eighths inch = one foot
 one quarter inch = one foot
 one eighth inch = one foot
 three eighths inch = one foot
 one half inch = one foot
 one quarter inch = one foot
 three quarters inch = one foot
 one inch = one foot
 one and one half inches = one foot
 three inches = one foot

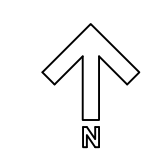


NOTES:
 (A) REMOVE AND REPLACE LIGHT FIXTURE LENS WITH SKYSCAPE LIGHT FIXTURE TYPE A (BID ALT 4)

REMOVE AND REPLACE LIGHT FIXTURE WITH PRUDENTIAL FIXTURE, MODEL: WAL 14-WFA-1 T8-O2-TMW-SC-UNV.WM-IOTHD. PROVIDE 2 MATCHING SPARE FIXTURES

ADD TWO 4PLEX OUTLETS & TWO QUAD TELEPHONE/DATA OUTLETS

8th FLOOR LIGHTING AND ELECTRICAL PLAN
 SCALE: 1/16" = 1'



SYMBOL LEGEND

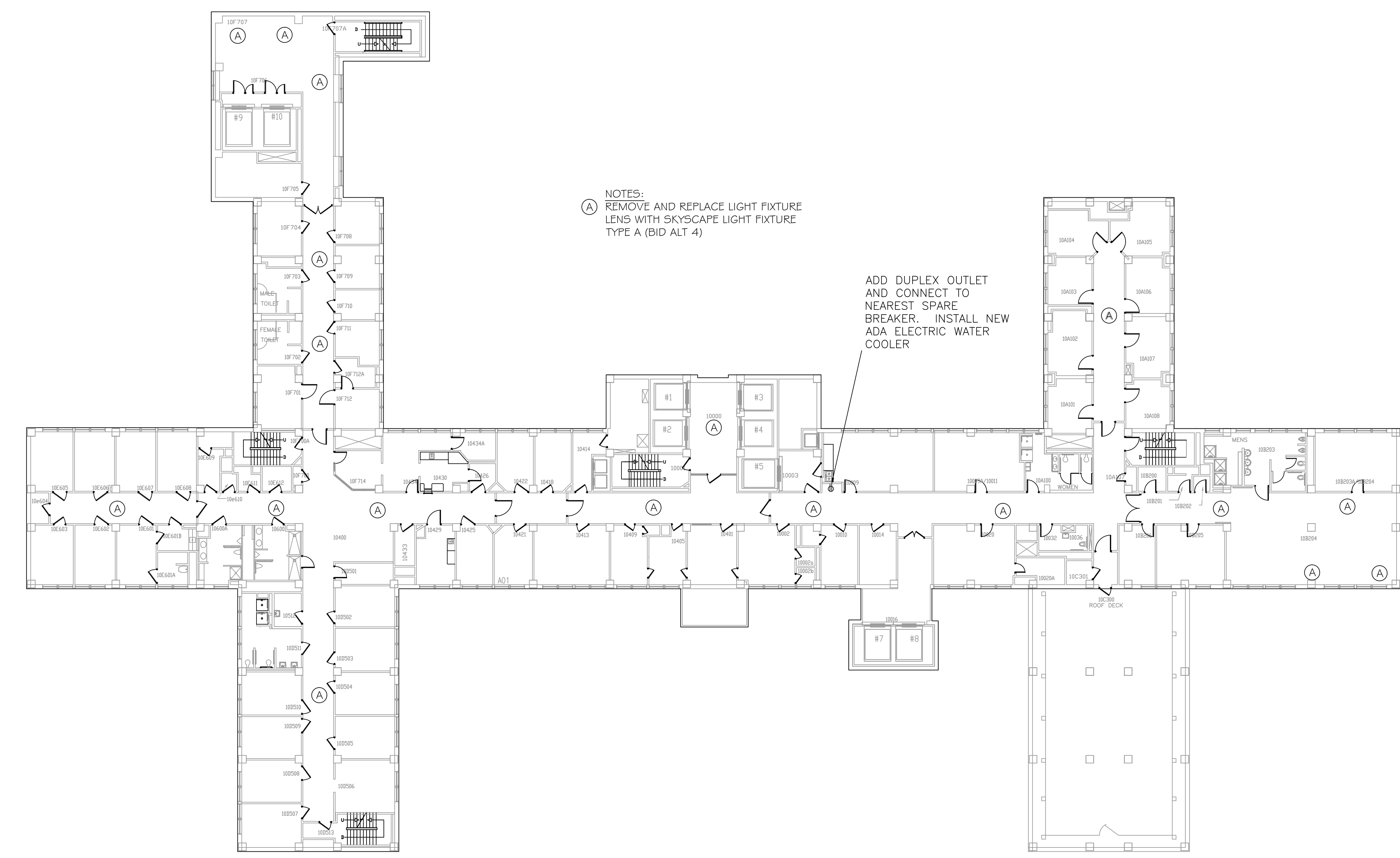
- ⊕ FOUR-PLEX RECEPTACLE - TWO DUPLEX RECEPTACLES
- ⊕ DUPLEX RECEPTACLE
- ◀ # COMBINATION TELEPHONE/DATA OUTLET BOX NUMBER BY SYMBOL INDICATES QUANTITY OF EACH JACK TYPE. ZERO INDICATES EMPTY OUTLET BOX, BLANK PLATE AND CONDUIT.

Revisions	Date

Concur: Requesting Service Kari Bealer	Drawing Title 8th FLOOR LIGHTING AND ELECTRICAL PLAN	Project Title RENOVATE MENTAL HEALTH HALLS AND ROOMS - OM	Building Number ONE
Concur: Safety & Fire Protection -	AutoCad Drawing File Name: -	Date 3/21/2013	Project No. 636-13-128
Concur: IRM Information & Technology -	Approved Facilities Operation Support Manager AGM	Checked RM	Drawn GLS
Location VAMC DMAHA, NE.		DRAWING NO. E1.1	
		Dwg. 6 of 8	



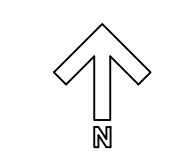
three inches = one foot
 one and one-half inches = one foot
 one inch = one foot
 three-quarters inch = one foot
 one-half inch = one foot
 three-eighths inch = one foot
 one-quarter inch = one foot
 one-eighth inch = one foot



NOTES:
 (A) REMOVE AND REPLACE LIGHT FIXTURE LENS WITH SKYSCAPE LIGHT FIXTURE TYPE A (BID ALT 4)

ADD DUPLEX OUTLET AND CONNECT TO NEAREST SPARE BREAKER. INSTALL NEW ADA ELECTRIC WATER COOLER

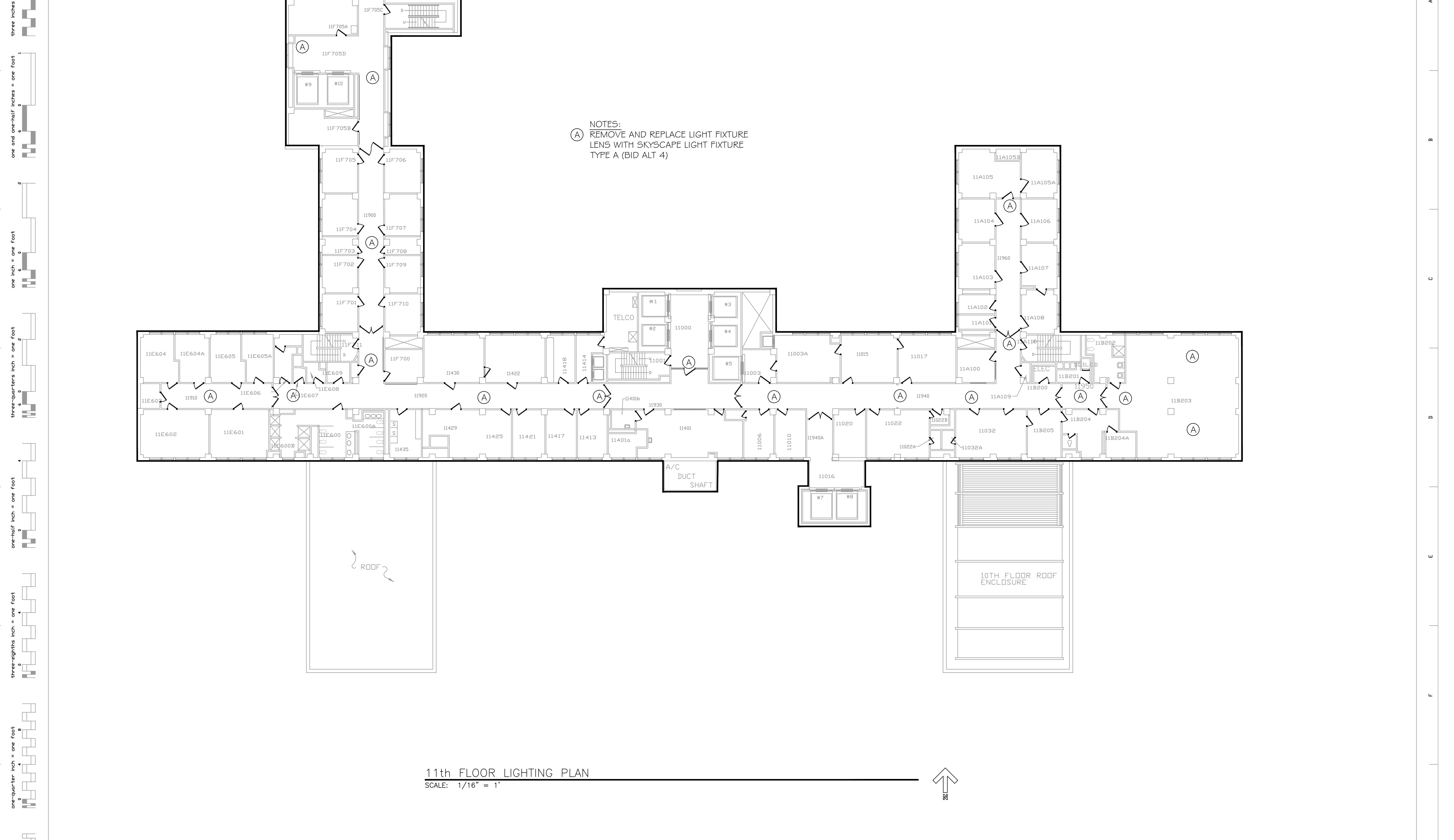
10th FLOOR LIGHTING PLAN
 SCALE: 1/16" = 1'



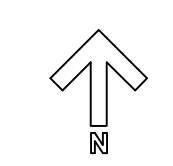
Revisions	Date

Concur: Requesting Service Kari Bealer	Drawing Title 10th FLOOR LIGHTING PLAN	Project Title RENOVATE MENTAL HEALTH HALLS AND ROOMS - OM	Building Number ONE
Concur: Safety & Fire Protection -	AutoCad Drawing File Name: -	Date 3/21/2013	Project No. 636-13-128
Concur: IRM Information & Technology -	Approved Facilities Operation Support Manager ACM	Checked RM	Drawn GLS
Location VAMC DMAHA, NE.			DRAWING NO. E1.2
			Dwg. 7 of 8





11th FLOOR LIGHTING PLAN
SCALE: 1/16" = 1'



three inches = one foot
one and one-half inches = one foot
one inch = one foot
three-quarters inch = one foot
one-half inch = one foot
three-eighths inch = one foot
one-quarter inch = one foot
one-eighth inch = one foot

Revisions	Date

Concur: Requesting Service Kari Bealer	Drawing Title 11TH FLOOR LIGHTING PLAN	Project Title RENOVATE MENTAL HEALTH HALLS AND ROOMS - OM	Building Number ONE
Concur: Safety & Fire Protection -	AutoCad Drawing File Name:	Date 3/21/2013	Project No. 636-13-128
Concur: IRM Information & Technology -	Approved Facilities Operation Support Manager AGM	Checked RM	Drawn GLS
		Location VAMC DMAHA, NE.	DRAWING NO. E1.3
			Dwg. 8 OF 8

