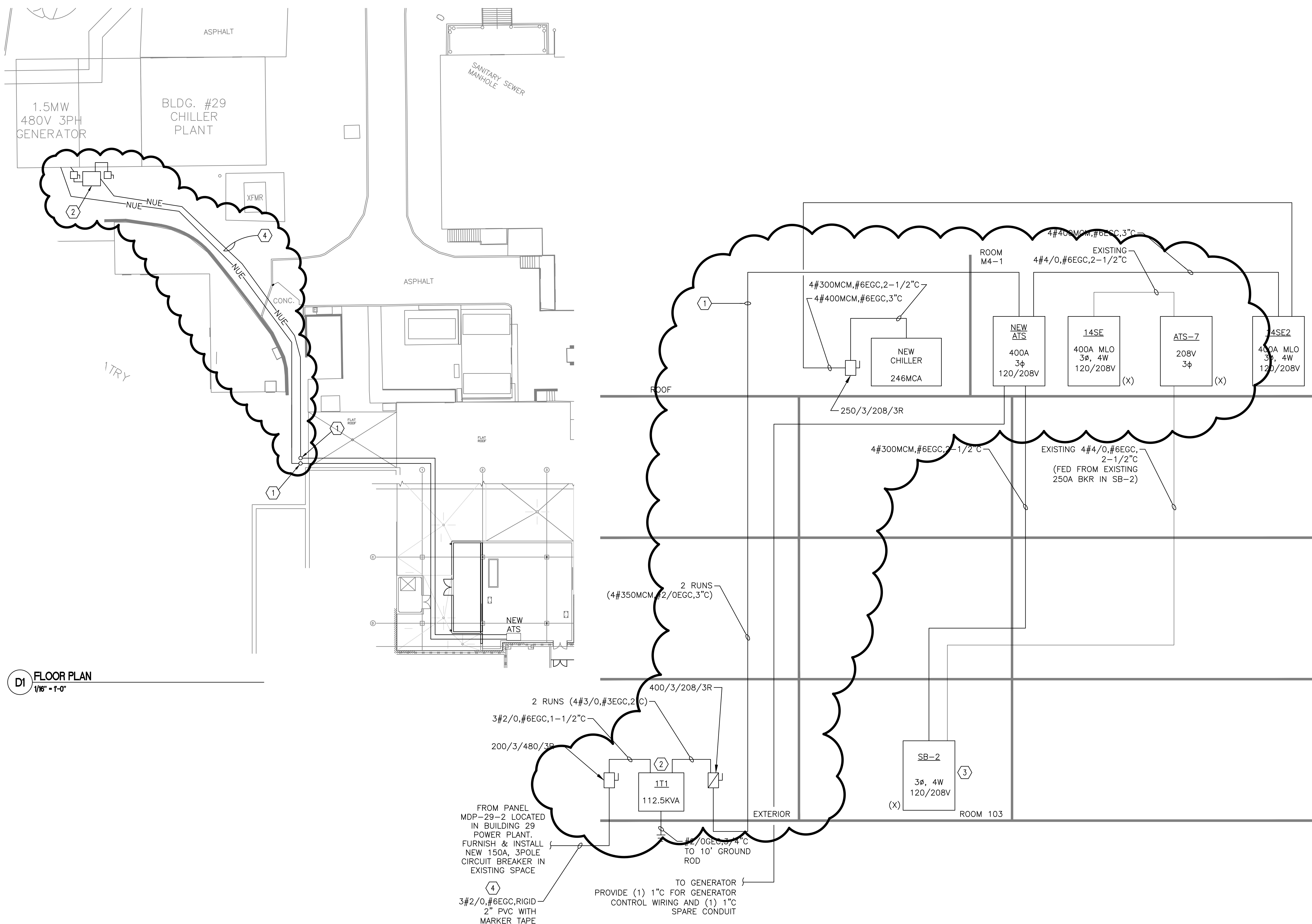
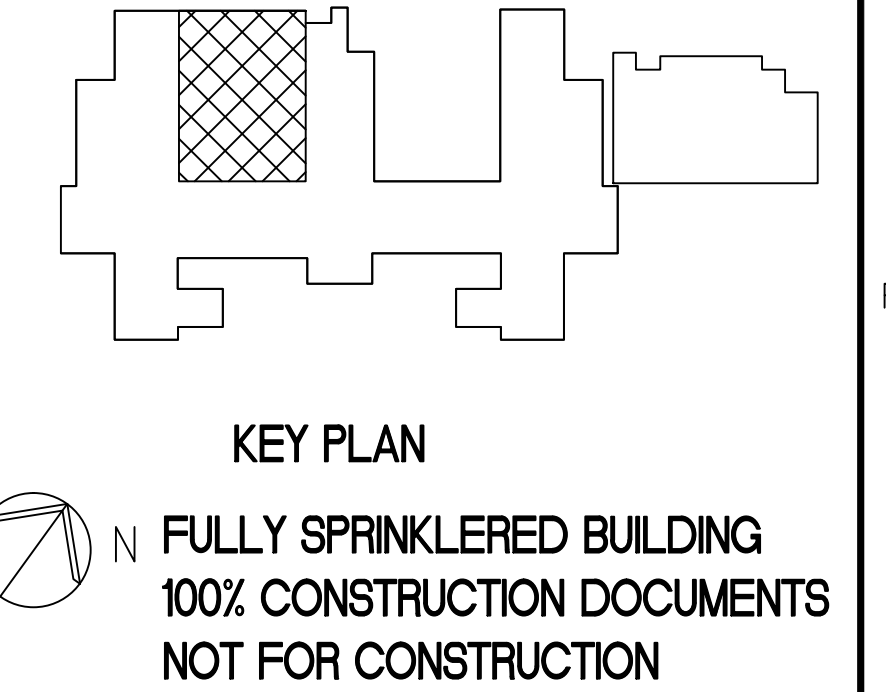


three inches = one foot
one and one half inches = one foot
one inch = one foot
three quarters inch = one foot
one half inch = one foot
three eighths inch = one foot
one quarter inch = one foot
one eighth inch = one foot



- NOTES**
1. REFER TO SHEET E-001 FOR LEGEND, ABBREVIATIONS, AND GENERAL NOTES.
 2. COMPLY WITH SPECIFICATIONS AND NOTES BELOW AS APPLICABLE.
 3. ALL RECEPTACLES SHALL BE INSTALLED 18" AFF UNLESS NOTED OTHERWISE.
 4. ALL WIRING SHALL BE COPPER. ALUMINUM WIRING IS NOT ALLOWED. UNLESS OTHERWISE NOTED, ALL WIRING SHALL BE 2#12 AWG SOLID AND 1#12 AWG SOLID EQUIPMENT GROUNDING CONDUCTOR IN EMT. HOMERUNS FED FROM A 20A-1P, 120V CIRCUIT IN EXCESS OF 70' SHALL BE #10 AWG SOLID.
 5. SEE MECHANICAL PLANS FOR HVAC UNITS, PUMPS AND FANS CONTROLLED BY THERMOSTATS AND OVERRIDE SWITCHES (PROVIDED BY ATC CONTRACTOR).
 6. FUSES AND OVERLOAD UNITS FOR MOTORS SHALL BE SIZED BASED ON ACTUAL MOTOR NAMEPLATE DATA AND IN ACCORDANCE WITH NEC.
 7. ALL WORK SHALL COMPLY WITH NFPA70 (NEC), NFPA72, NFPA99, NFPA101 & ALL FEDERAL, STATE & LOCAL REGULATIONS.
 8. ALL PENETRATIONS THROUGH FLOORS, RATED WALLS AND PARTITIONS SHALL BE SEALED WITH UL APPROVED FIRE SEALANT MATERIAL TO MAINTAIN FIRE RATING FOR THE SEPARATION.
 9. ALL ENCLOSURES, CONDUIT BODIES AND THEIR COVERS CONTAINING FIRE ALARM SYSTEM CONDUCTORS SHALL BE PAINTED RED.
 10. AN EQUIPMENT GROUNDING CONDUCTOR SHALL BE INSTALLED WITH ALL FEEDER AND BRANCH CIRCUITS. SIZE IN ACCORDANCE WITH NFPA70 (NEC) ARTICLE 250.
 11. FLEXIBLE CONNECTIONS TO MOTORS SHALL BE LIQUID TIGHT FLEXIBLE METAL CONDUIT IN A 360° LOOP EXCEPT AS NOTED OTHERWISE.
 12. LOCATE DISCONNECTS AT EQUIPMENT AS REQUIRED BY MANUFACTURER AND SPECIFICATIONS. LOCATIONS ON DRAWINGS ARE APPROXIMATE.
 13. ALL UNDERGROUND CONDUITS MOUNTED TO FIXED STRUCTURES ABOVE GRADE SHALL HAVE EXPANSION FITTINGS.
 14. PROVIDE WIRE MARKERS TO IDENTIFY CABLES FOR ALL SYSTEMS AT THE ORIGIN, PULL BOXES, AND TERMINATION POINTS. LABELS SHALL BE SELF ADHESIVE OR HEAT SHRINK TYPE.
 15. NO LIVE WORK WILL BE ALLOWED. EVERY CIRCUIT SHALL BE LOCKED-OUT AND TAGGED-OUT BEFORE COMMENCING WORK.

- KEYED NOTES**
- ① AT THIS POINT THE CONDUIT RUN WILL GO DOWN 4 STORIES TO THE GROUND LEVEL.
 - ② NEW PAD MOUNTED 112.5KVA TRANSFORMER.
 - ③ NEW 208V POWER FEEDER FROM SB-2, INSTALL NEW 400A, 3-POLE BREAKER IN SB-2.
 - ④ NEW 460V UNDERGROUND POWER FEEDER FROM GENERATOR ROOM PANEL MDP-29-2.



AMMENDMENT #001		05-21-13	CONSULTANTS:	ARCHITECT/ENGINEERS:	Drawing Title: ELECTRICAL POWER PLAN AND RISER DIAGRAM	Project Title: UPGRADE SURGERY HVAC	Project Number: 564-07-119	Building Number: 1	Office of Construction and Facilities Management		
Revisions		Date	Engineer of Record	Engineer in Responsible Charge	Approved Project Director	Location: VHSO 100 N. COLLEGE AVE. FAYETTEVILLE, AR 72703	Date: 12-31-2012	Checked: KLP	Drawn: MPS	Drawing Number: 1EP402	Department of Veterans Affairs