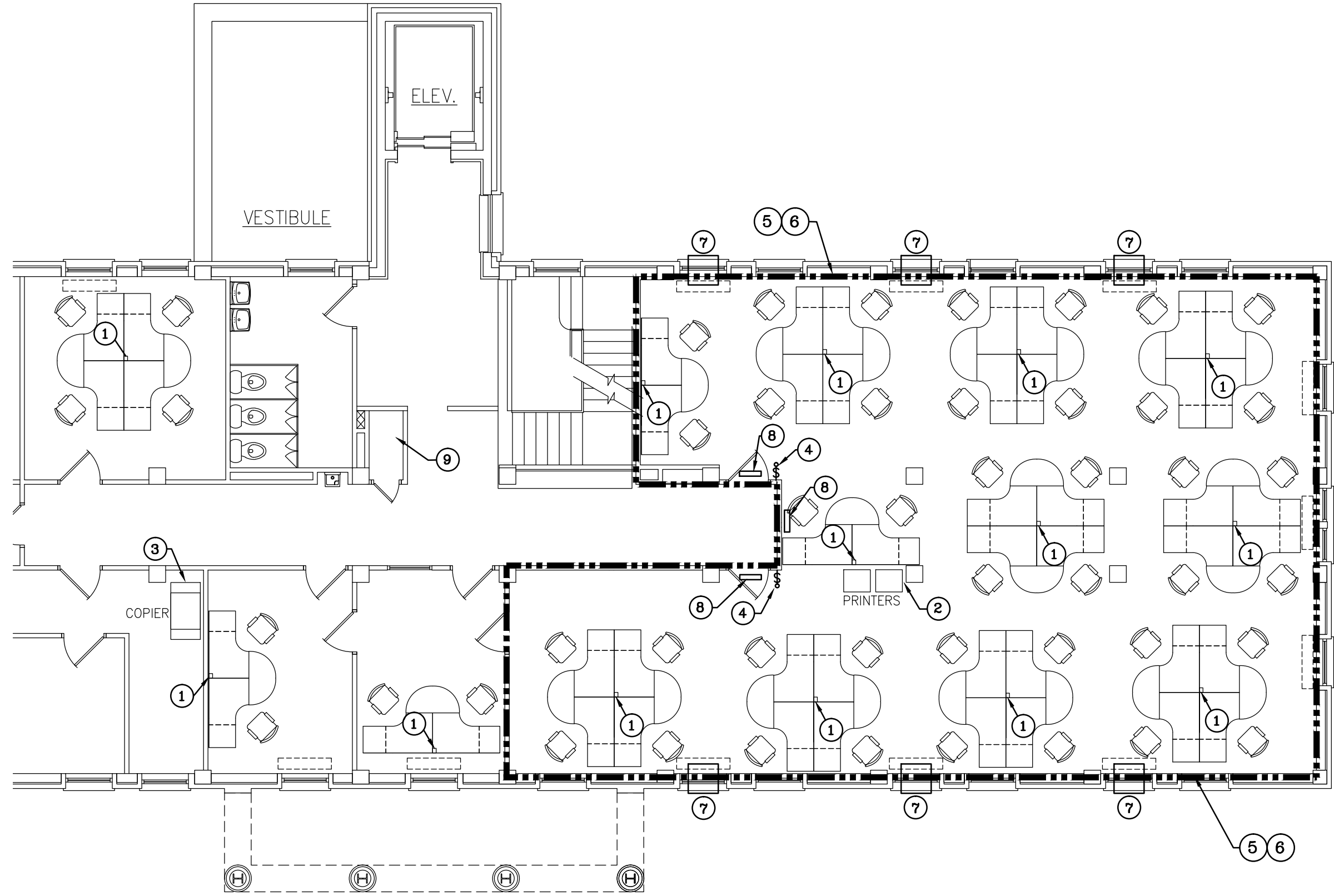
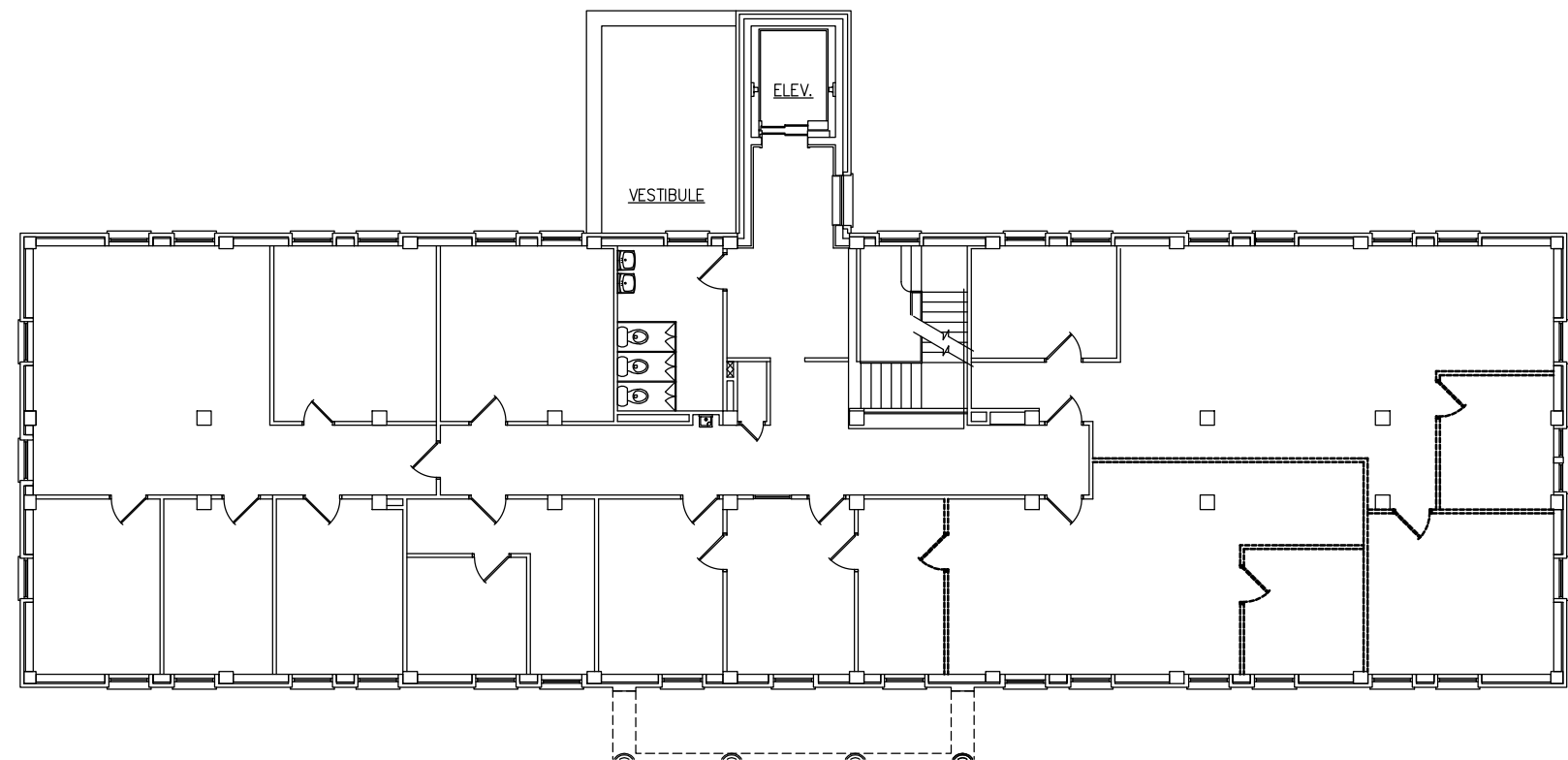


REFLECTED CEILING PLAN
SCALE: 1/8"=1'-0"



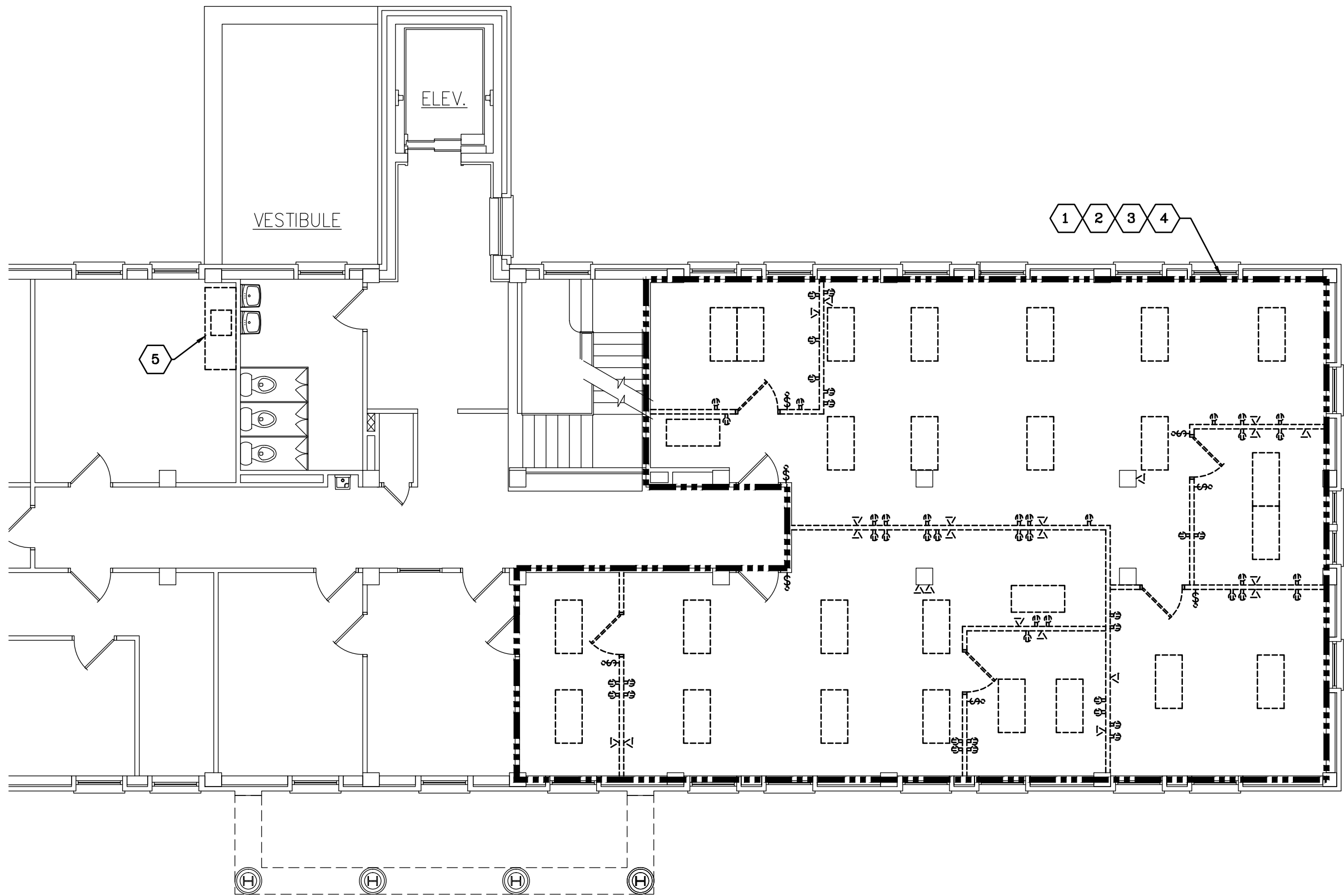
NEW WORK PLAN
SCALE: 1/8"=1'-0"



KEY PLAN - SECOND FLOOR PLAN - BLDG 3
NO SCALE

SYMBOL LIST

- SWITCH FOR LIGHTING CONTROL
- DATA OUTLET
- DUPLEX RECEPTACLE
- 2'x4' LIGHT FIXTURE
- INDICATES REMOVAL
- ETR EXISTING TO REMAIN



DEMO PLAN
SCALE: 1/8"=1'-0"

GENERAL NOTES

- ALL DATA OUTLETS ARE TO INCLUDE (2) DATA LINES, (1) PHONE LINE AND (1) SPARE.
- VERIFY CIRCUITS TO BE DISCONNECTED FOR EQUIPMENT BEING REMOVED.
- PROVIDE NEW BREAKERS FOR ALL NEW CONNECTIONS. ROUTE POWER LINES FROM EACH DEVICE OR FIXTURE BACK TO PANEL IN CONDUIT.
- PROVIDE CAT6 CABLES FOR ALL DATA AND PHONE LINES. TERMINATE BOTH ENDS AND PROVIDE PATCH PANELS. CERTIFY INSTALLATION TO Gbit ETHERNET STANDARDS. TERMINATIONS TO BE 568A.

PLAN NOTES

- PROVIDE DROPS (IN POWER POLE) WITH DATA AND PHONE TO EACH WORK STATION. PROVIDE DROP (IN POWER POLE) WITH POWER TO RECEPTACLE AT EACH WORK STATION.
- PROVIDE POWER AND DATA DROPS TO PRINTERS AT COLUMN.
- PROVIDE POWER, DATA AND PHONE DROPS TO COPIER.
- PROVIDE 3-WAY SWITCHES TO CONTROL LIGHTING. PROVIDE WIRING AND CONDUIT FROM EXISTING PANEL TO NEW LIGHT FIXTURES.
- PROVIDE CARPET FLOORING THRU-OUT SPACE WITH VINYL COVE BASE.
- PATCH ALL WALL DENTS, HOLES, ETC AND PAINT ALL WALLS WITH PRIMER AND TWO COATS OF PAINT THRU OUT THIS AREA.
- PROVIDE WINDOW AIR-CONDITIONER AND NEW DUPLEX RECEPTACLE.
- PROVIDE LIGHTED EXIT SIGNS AND PROVIDE POWER.
- EXISTING DATA CLOSET.
- PROVIDE NEW 2'x4' ACOUSTICAL CEILING GRID AND TILES THRU OUT THIS AREA.
- PROVIDE NEW T-8 LAMPS AND NEW BALLASTS IN EACH LIGHT FIXTURE (NEW AND EXISTING).

GENERAL NOTES - DEMO

- REMOVE ALL WIRING AND CONDUIT NO LONGER IN SERVICE BACK TO PANEL.
- PROPERLY DISPOSE OF ALL REMOVED ITEMS UNLESS OTHERWISE NOTED.

DEMOLITION NOTES

- REMOVE EXISTING LIGHTING AND SWITCHES THRU-OUT THIS AREA. LIGHTING TO BE RE-USED.
- REMOVE DATA, PHONE AND RECEPTACLES IN PARTITIONS IDENTIFIED TO BE REMOVED. REMOVE ALL ASSOCIATED WIRING AND CONDUIT BACK TO PANEL.
- REMOVE CEILINGS, INTERIOR WALLS, DOORS AND FRAMES THRU-OUT THIS AREA.
- REMOVE ENTIRE CARPET THRU-OUT THIS AREA.
- DISCONNECT AND REMOVE EXISTING SINK AND BASE CABINET. REMOVE PLUMBING BACK TO MAINS AND CAP.

VA WESTERN NEW YORK HEALTHCARE SYSTEM 222 RICHMOND AVENUE BATAVIA, NEW YORK 14020		CLINICAL ENGINEERING	DATE	ENGINEERING MANAGER	DATE	Drawing Title FLOOR PLANS AND NOTES	Project Title BATAVIA CALL CENTER BUILDING #3	Date APRIL 3, 2013
		INFECTION CONTROL	DATE	CARELINE MANAGER	DATE	MEDICAL CENTER DIRECTOR	Building Number 1	Station No. 528
		SAFETY OFFICER	DATE	CHIEF OF STAFF	DATE	ASSOCIATE MEDICAL CENTER DIRECTOR	Checked VR	13-s68 A101
ISSUE FOR BID Revisions						Drawn RLR	Location V.A.M.C. BATAVIA, NEW YORK	

