

PHASE 2
(REFURBISH AIR HANDLERS
2 & 4, SEE MECH. DRAWINGS)

KEY NOTES

- 1. SEE SHEET MH001 KEYNOTE 1 FOR BASEMENT WORK PHASING.
- 2. SEE SHEET MH001, MH001 & MH001 FOR THIS PHASE WORK.
- 3. SEE SHEET MH002, MH002, MH002 AND KEYNOTE 13 ON SHEET MH003 FOR THIS PHASE WORK.
- 4. SEE SHEET MH003, MH003, MH003 AND KEYNOTE 13 ON SHEET MH003 FOR THIS PHASE WORK.
- 5. SEE SHEET MH004 & MH004 FOR AH-2 & AH-4 WORK FOR THIS PHASE. AH-3 WORK TO BE UNDER PHASE 1.

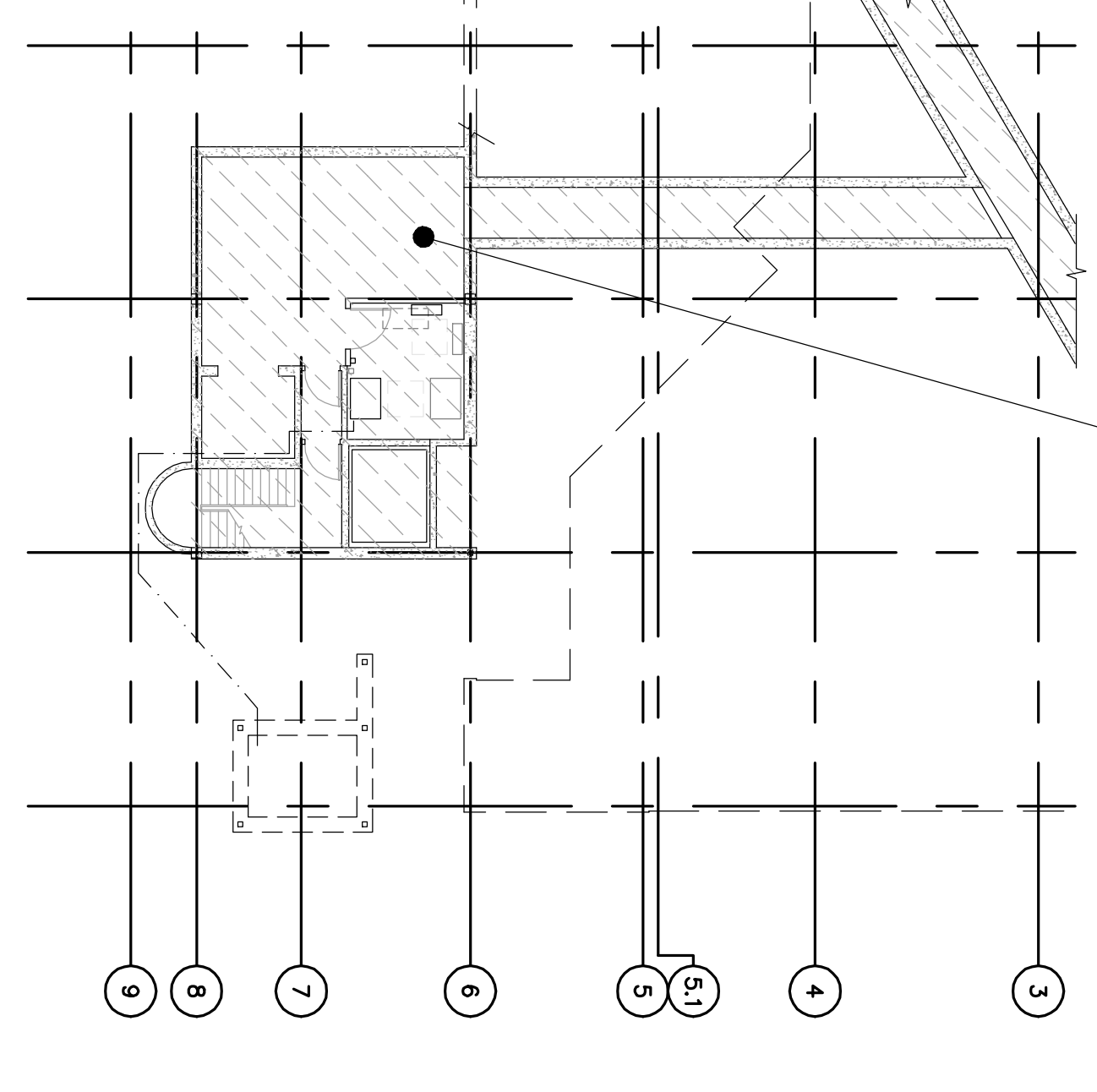
PHASE NOTES

- 1. PROVIDE TEMPORARY COOLING AND/OR HEATING FOR AH-2 & 4 ZONES WHEN COMPLETING PHASE 2 REPLACEMENT OF AIR COILS. TEMPORARY SYSTEM SHALL MAINTAIN 55°F TO 60°F IN ALL ZONES. SYSTEM SHALL BE OPERATING FOR 24 HOURS PER HOUR OF SUPPLY AIR.
- 2. FINAL BALANCING OF PHASE 2 & 3 SHALL BE COMPLETED AFTER OPERATING WORK AND/OR WEEKENDS WHEN ALL OF THESE PHASES ARE COMPLETE. PROVIDE PRELIMINARY BALANCING AT THE END OF EACH OF THESE PHASES.
- 3. DUCT CLEANING FOR MAIN SUPPLY & RETURN DUCTS FROM WALLS AND FLOOR SHALL BE DONE UNDER PHASE 2.

DEDUCTIVE ALTERNATE No 6

- 1. TEMPORARY COOLING AND/OR HEATING AS IDENTIFIED IN PHASE NOTE 1 ABOVE SHALL BE ELIMINATED AS DEDUCTIVE ALTERNATE No 6.

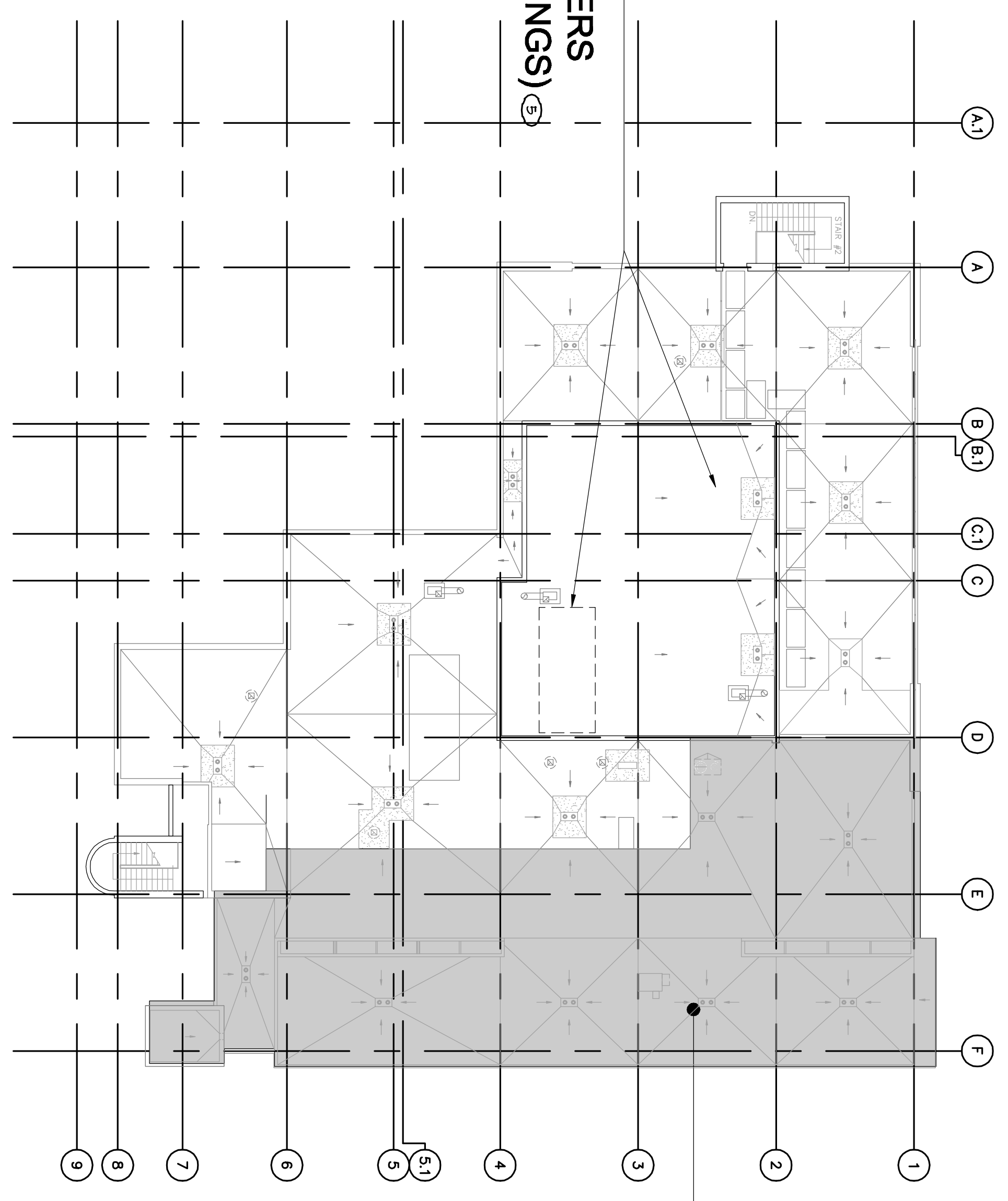
PHASE 1
(BASEMENT)



BASEMENT PLAN

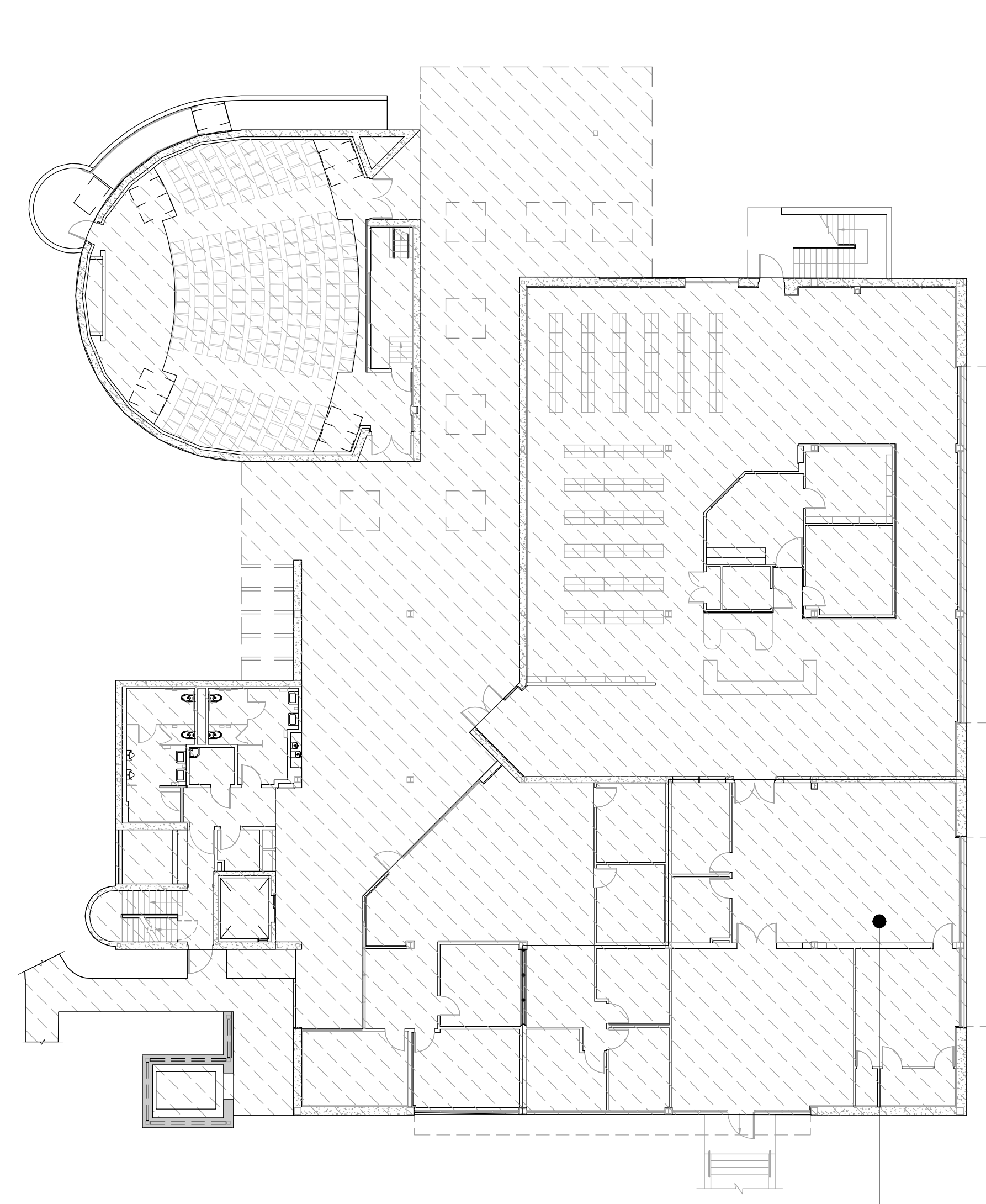
PHASE 3
(ROOF WORK)

NO ROOF
WORK



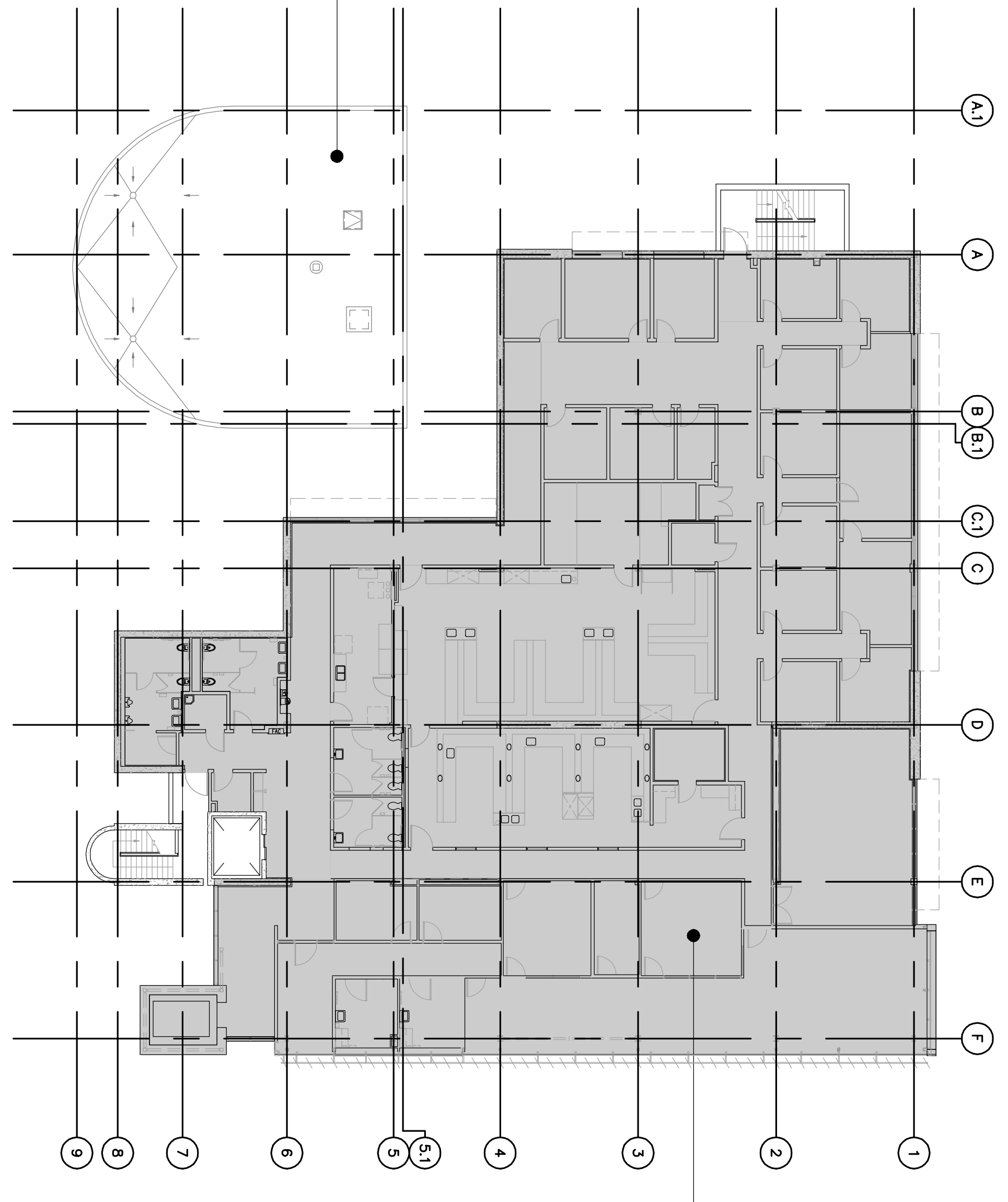
ROOF - CONSTRUCTION PHASING PLAN

PHASE 1
(1ST FLOOR WORK)



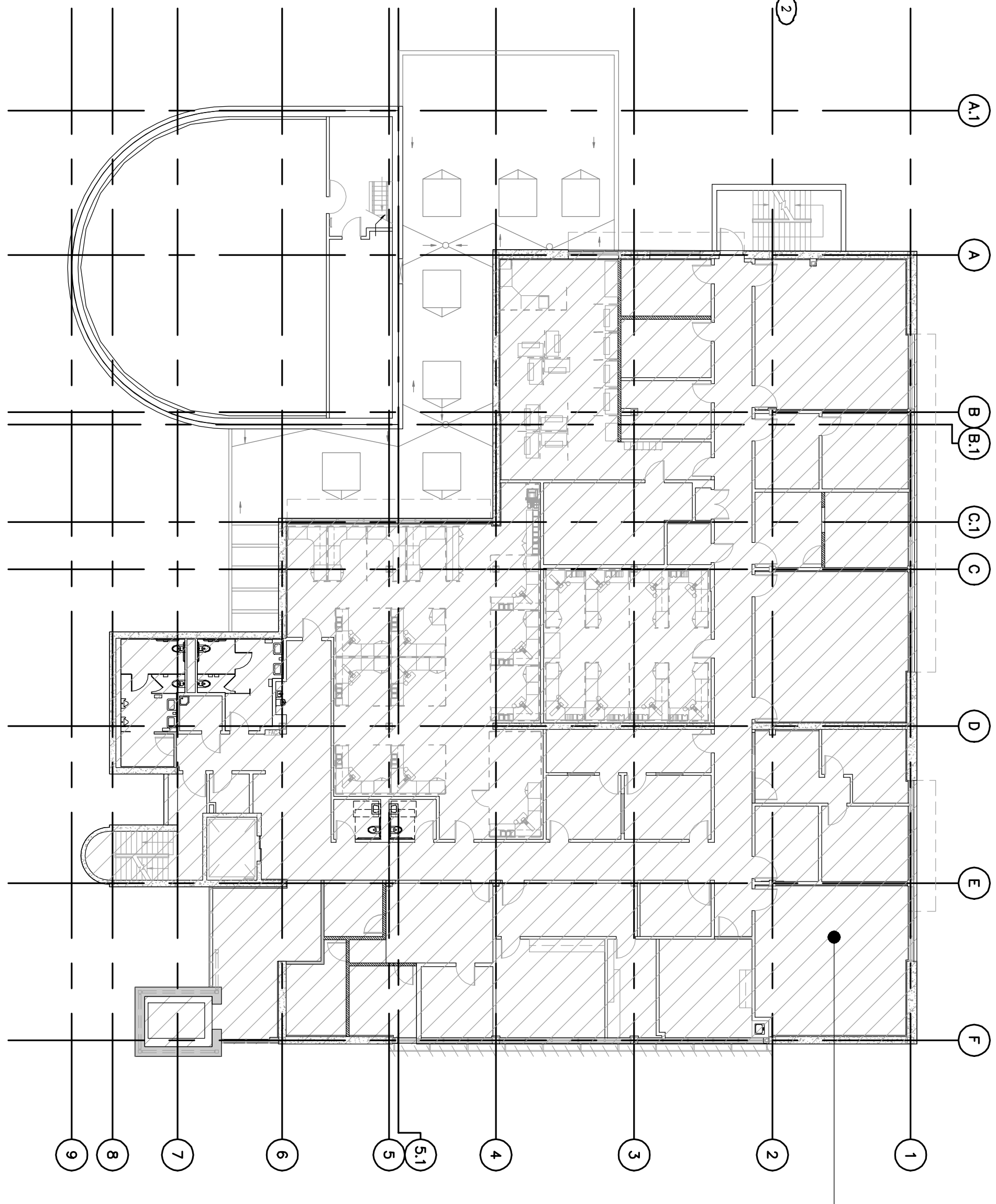
FIRST FLOOR - CONSTRUCTION PHASING PLAN

PHASE 3
(3RD FLOOR
WORK)



THIRD FLOOR - CONSTRUCTION PHASING PLAN

PHASE 2
(2ND FLOOR
WORK)



SECOND FLOOR - CONSTRUCTION PHASING PLAN

REVISED PER RFI 6/5/2013

CONSULTANTS:

ARCHITECT/ENGINEERS:

Drawing Title
CONSTRUCTION PHASING PLAN

Project Title
BUILDING 24
SEISMIC CORRECTION
AND ADDITION

Project Number
570-215

Office of
Construction
and Facilities
Management



LP Consulting Engineers, Inc.
885 W. Adams Ave., Suite 101, Costa, CA 95022
P: 650.322.2444 / www.lpc-engineers.com
Jas. R. 10-1089



HMC Architects
1827 E. Pi Avenue, Suite 103, Fresno, CA 93720
T: 559.322.2444 / www.hmcarchitects.com

Approved Project Director

Location
VAMC FRESNO, CA

Checked
GML

Drawn
DN

Date
March 12, 2013

Drawing Number
MH002
Dwg. 4 of 180

