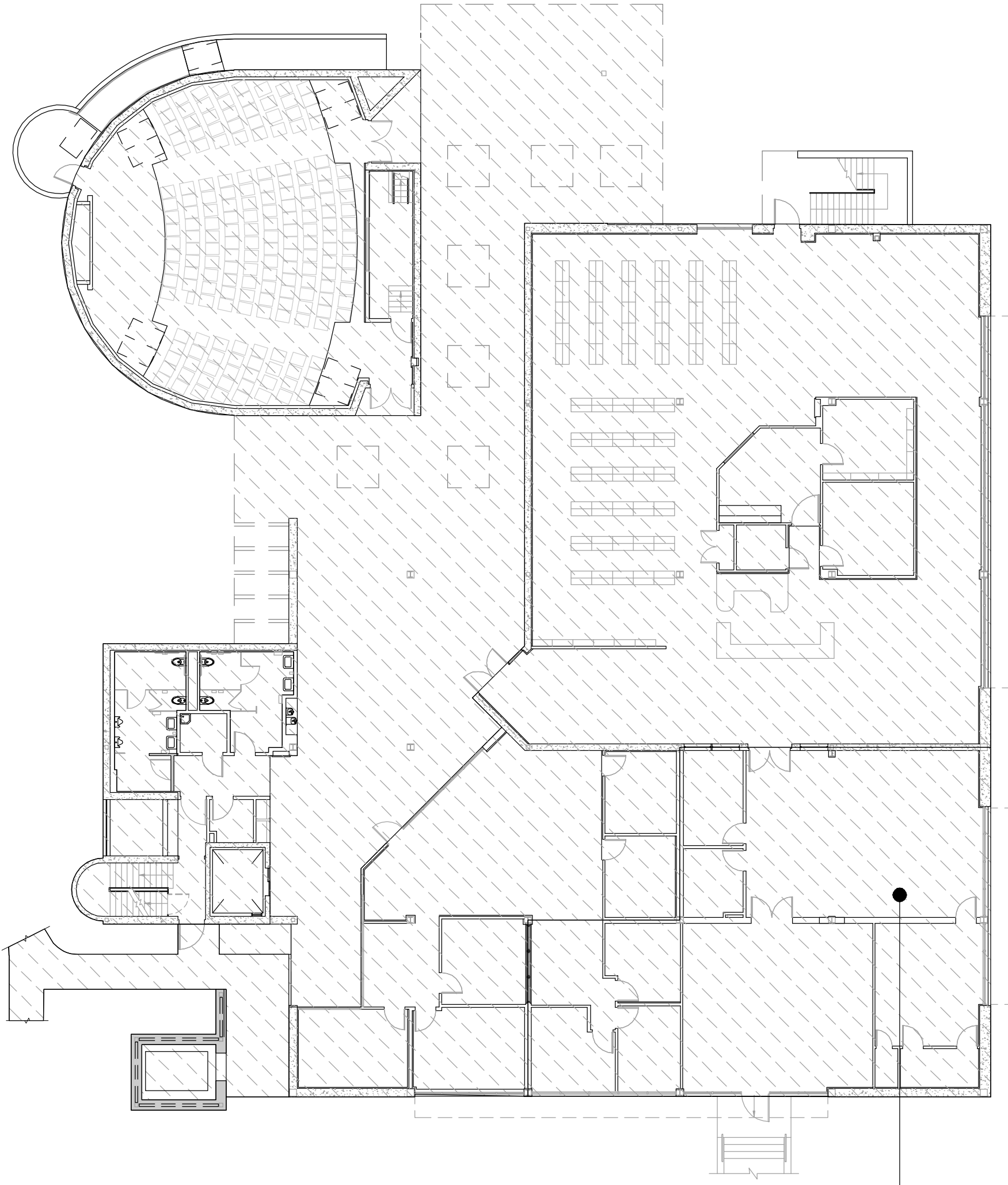
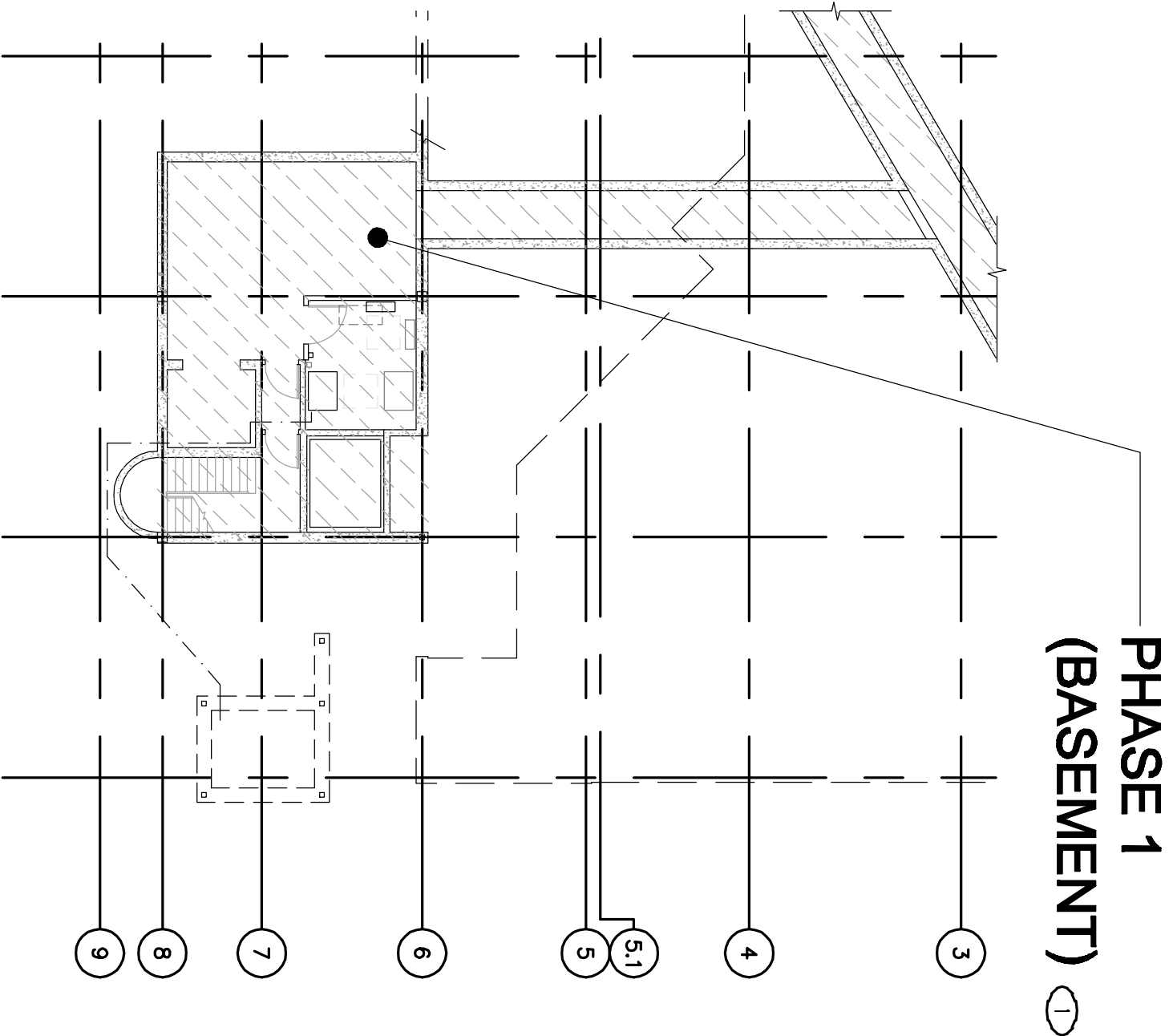


4 ROOF - CONSTRUCTION PHASING PLAN

3 THIRD FLOOR - CONSTRUCTION PHASING PLAN

- KEY NOTES**
- 1 NO PLUMBING WORK IN THIS AREA
  - 2 SEE SHEET PP01 & PP02 FOR THIS PHASE WORK
  - 3 SEE SHEET PP02 AND PP03 FOR THIS PHASE WORK
  - 4 SEE SHEET PP03 AND PP03 FOR THIS PHASE WORK
  - 5 SEE SHEET PP04, PP05, PP04 & PP05 FOR THIS PHASE WORK



6 BASEMENT PLAN

1 FIRST FLOOR - CONSTRUCTION PHASING PLAN

2 SECOND FLOOR - CONSTRUCTION PHASING PLAN

one eighth inch = one foot  
0 4 8 16

one quarter inch = one foot  
0 4 8

three eighths inch = one foot  
0 4

one half inch = one foot  
0 4

three quarters inch = one foot  
0 2

one inch = one foot  
0 6" 0

one and one half inches = one foot  
0 6" 0

three inches = one foot  
0 6" 0

REVISED PER RFI

6/5/2013

CONSULTANTS:

REG. PROFESSIONAL ENGINEER  
NO. 33390  
STATE OF CALIFORNIA  
CIVIL & MECHANICAL

**LP**  
**Engineers, Inc.**  
885 W. Adams Ave., Suite 101, Chula, CA 92012  
P: 619.425.1515  
www.lpengineers.com  
Jed R. (10-1089)

REGISTERED PROFESSIONAL ARCHITECT  
NO. C-1065  
STATE OF CALIFORNIA

**HMC**  
**Architects**  
1827 E. Pi Avenue, Suite 103, Fresno, CA 93720  
T: 559.322.2444 / www.hmcarchitects.com

Drawing Title

**CONSTRUCTION PHASING PLAN**

Project Title

**BUILDING 24  
SEISMIC CORRECTION  
AND ADDITION**

Location

**VAMC, FRESNO, CA**

Date

**March 12, 2013**

Checked

**QML**

Drawn

**DN**

Drawing Number

**PP002**

Building Number

**24**

Project Number

**570-215**

Office of  
Construction  
and Facilities  
Management

**Department of  
Veterans Affairs**

VA FORM 08-43231