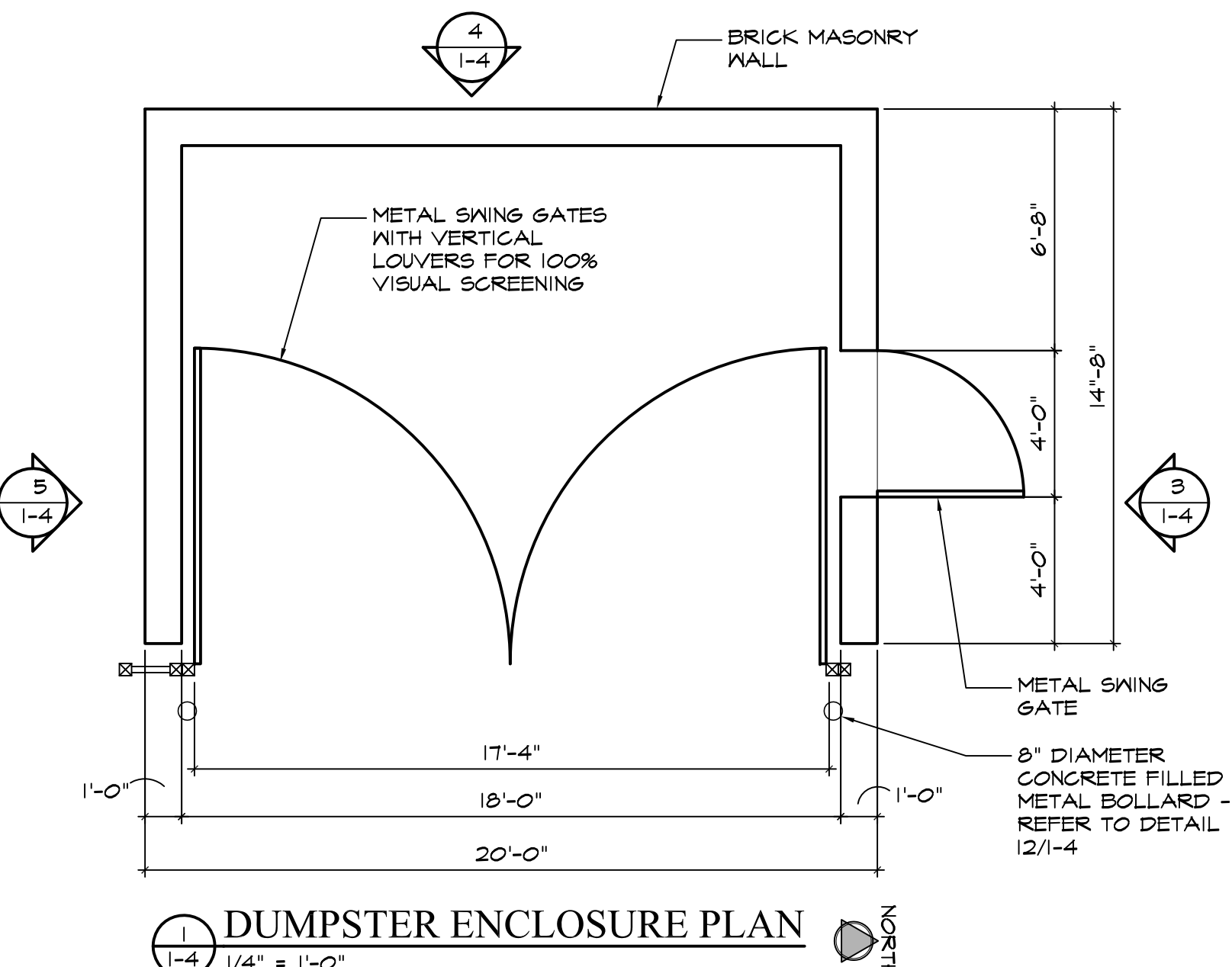
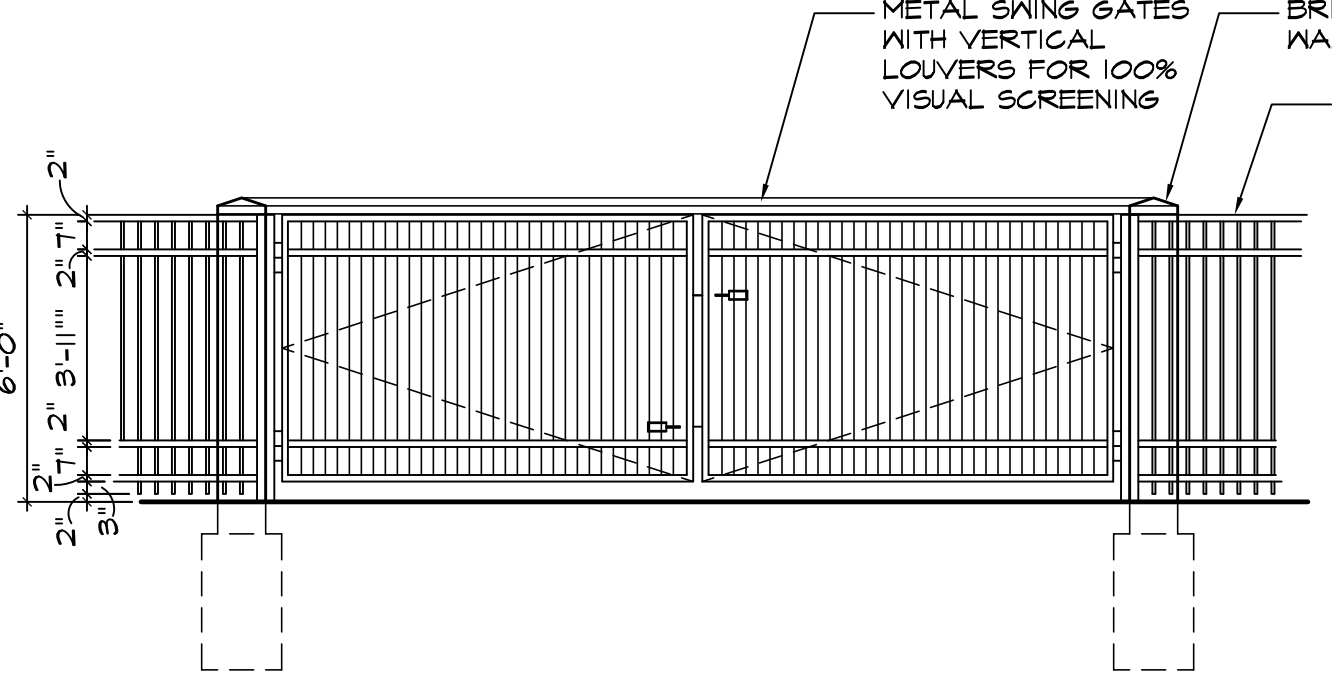


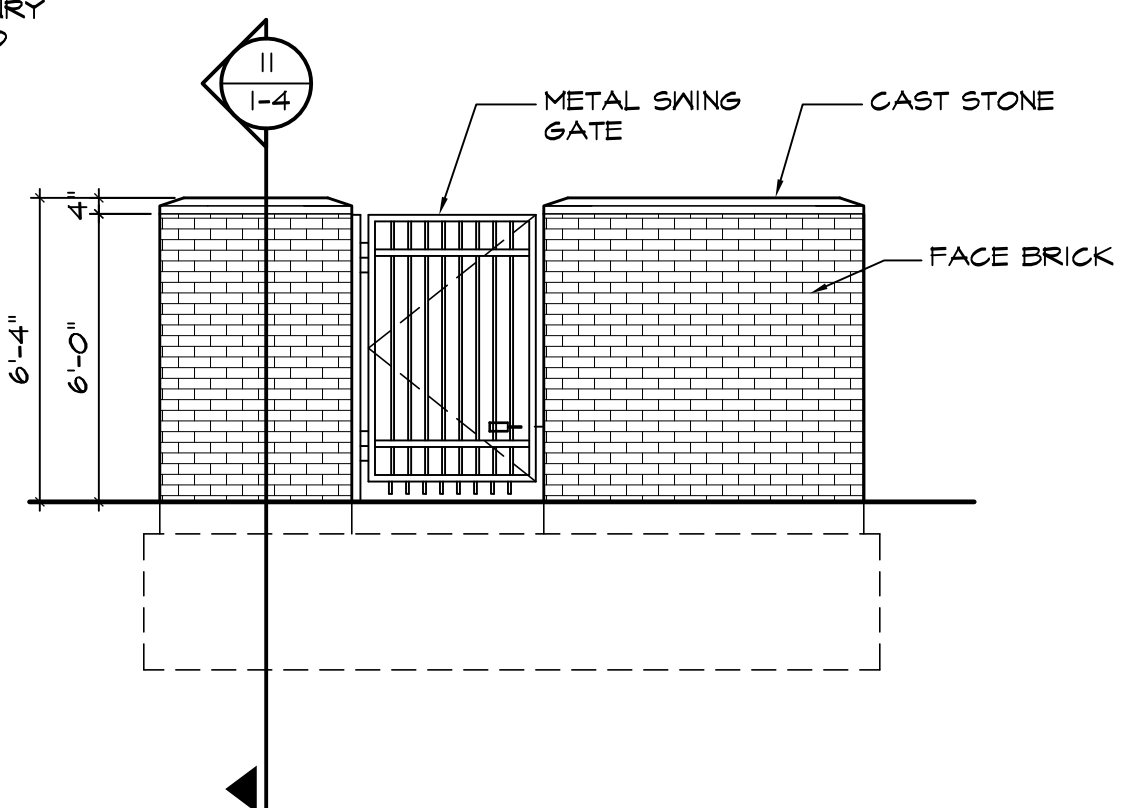
three inches = one foot  
one and one half inches = one foot  
one inch = one foot  
three quarters inch = one foot  
three eighths inch = one foot  
one quarter inch = one foot  
one eighth inch = one foot



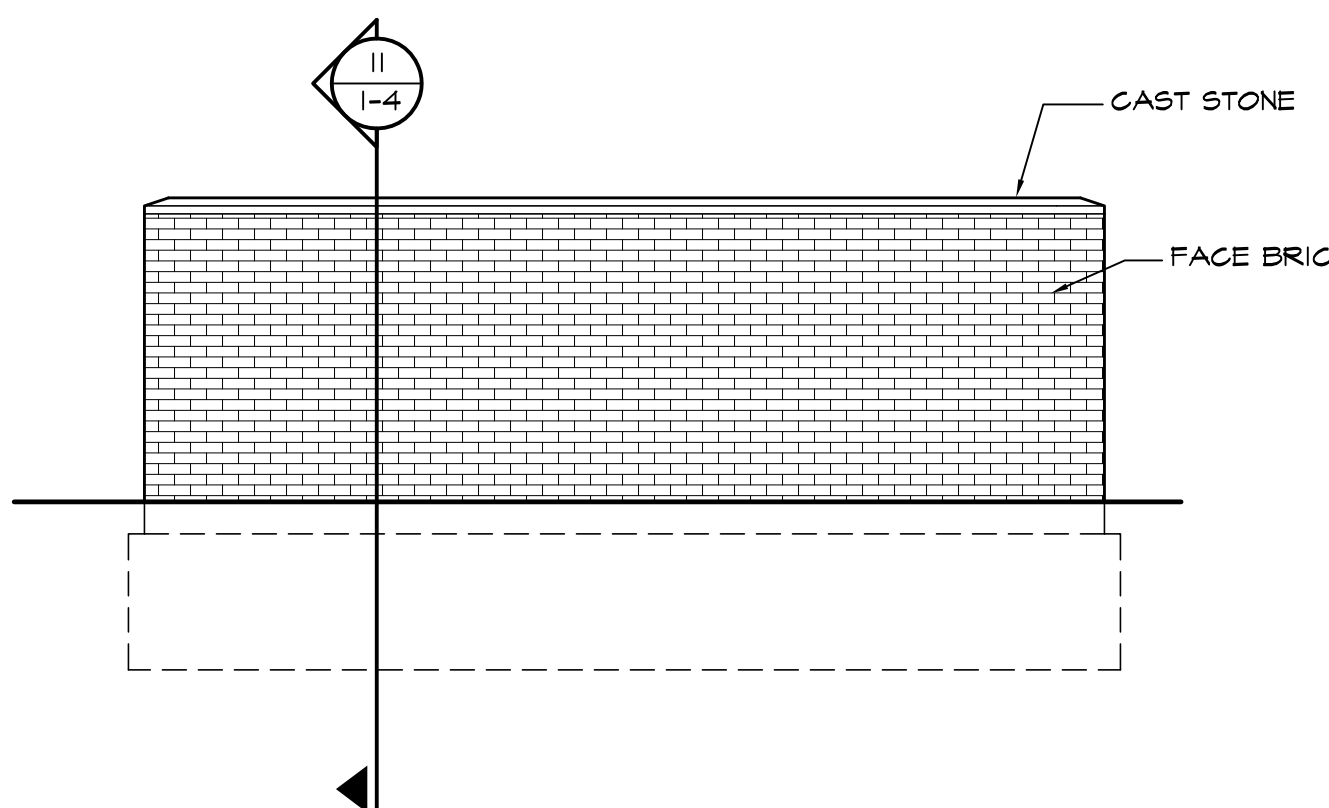
1 DUMPSTER ENCLOSURE PLAN  
1/4" = 1'-0"



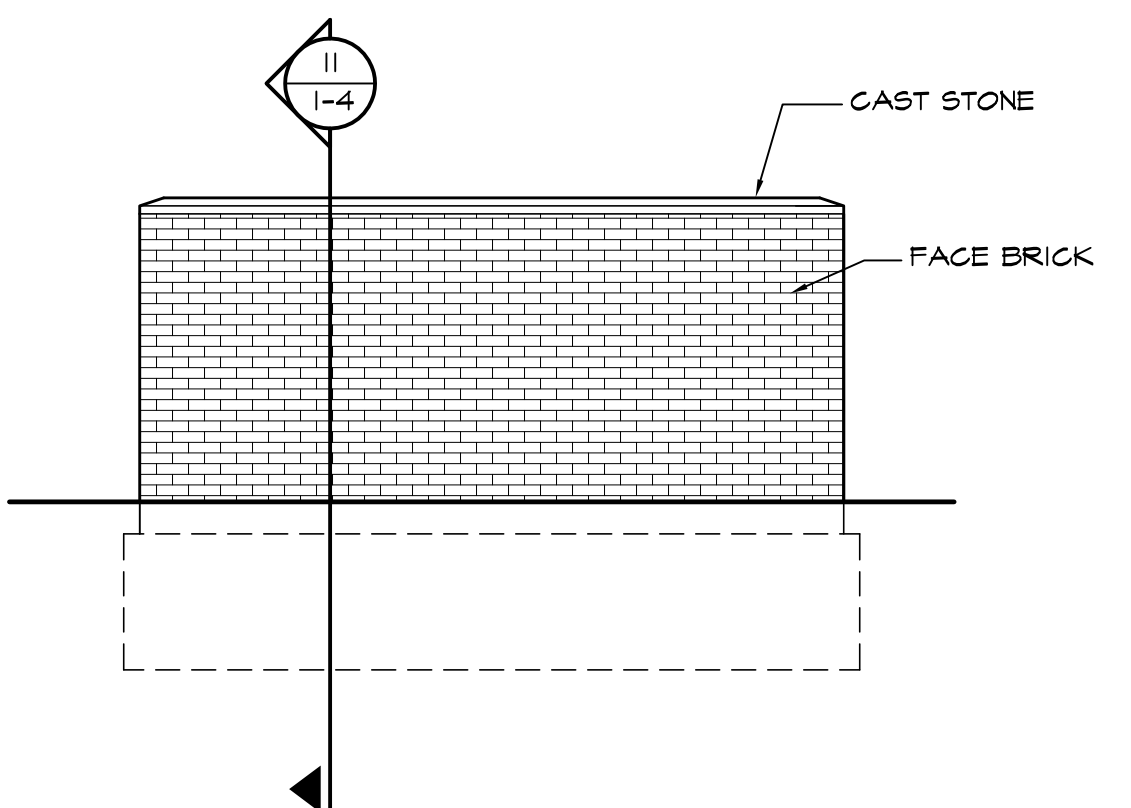
2 DUMPSTER ENCLOSURE - EAST ELEVATION  
1/4" = 1'-0"



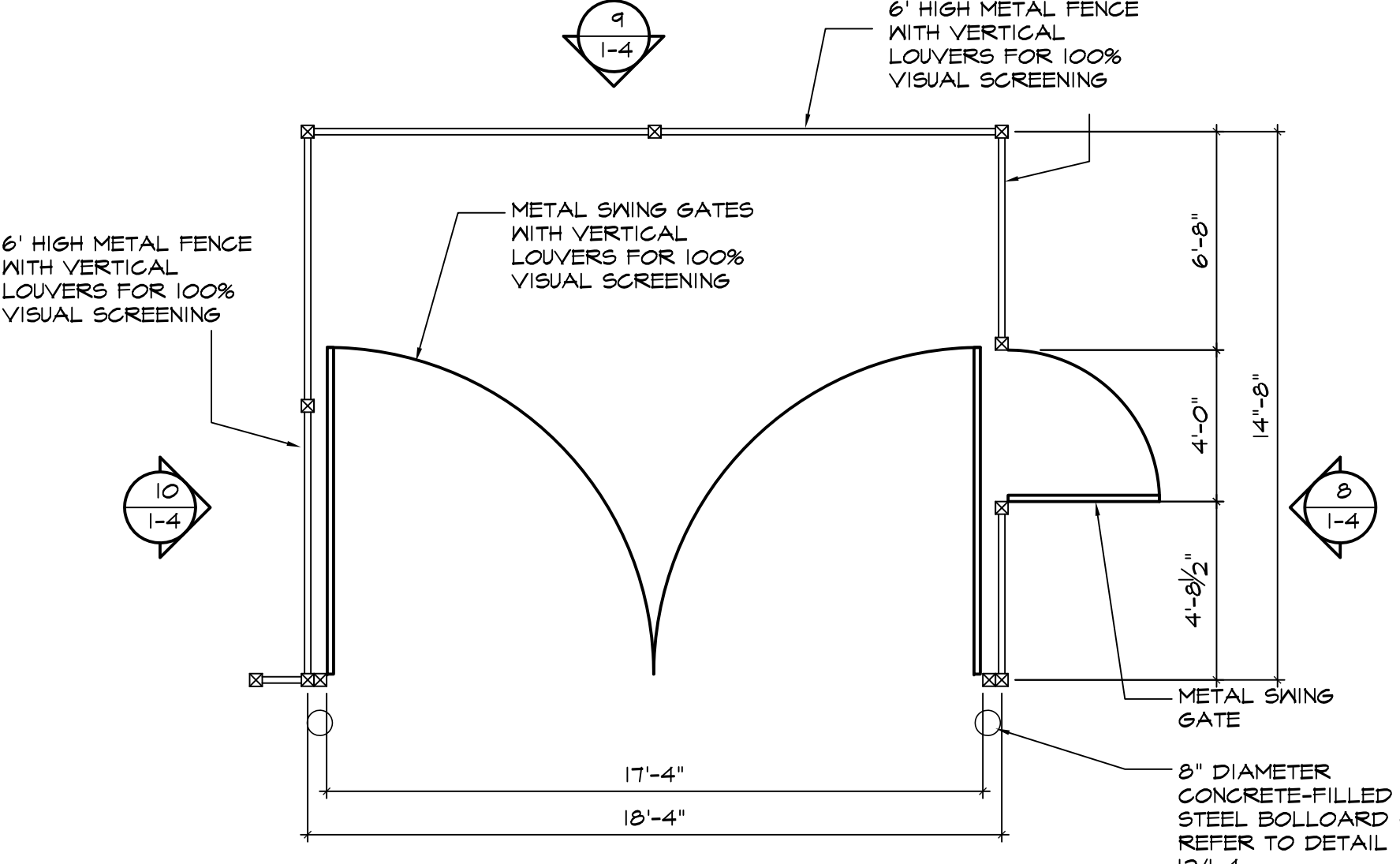
3 DUMPSTER ENCLOSURE - NORTH ELEVATION  
1/4" = 1'-0"



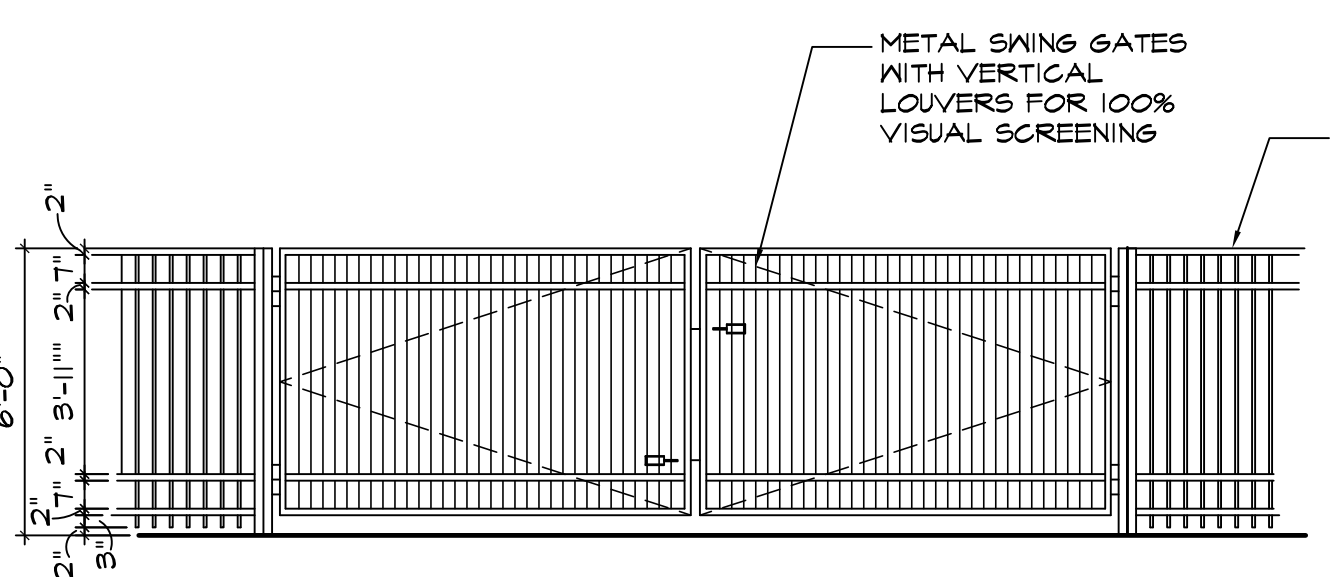
4 DUMPSTER ENCLOSURE - WEST ELEVATION  
1/4" = 1'-0"



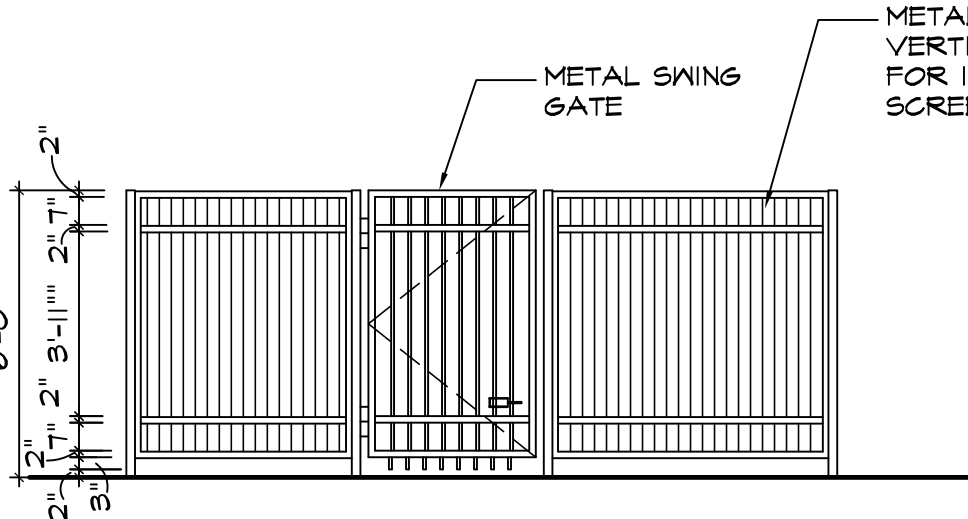
5 DUMPSTER ENCLOSURE - SOUTH ELEVATION  
1/4" = 1'-0"



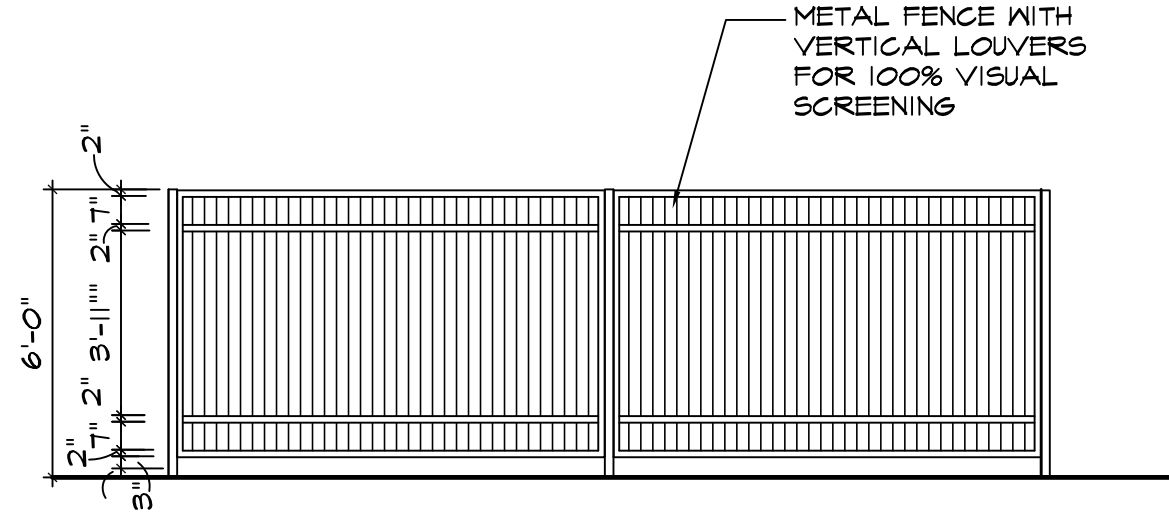
6 DUMPSTER ENCLOSURE PLAN  
1/4" = 1'-0"



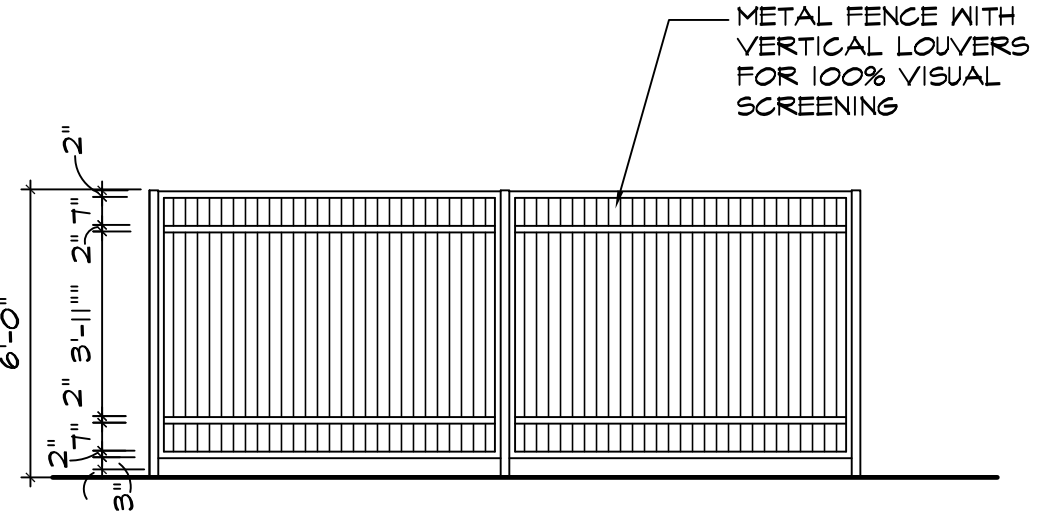
7 DUMPSTER ENCLOSURE - EAST ELEVATION  
1/4" = 1'-0"



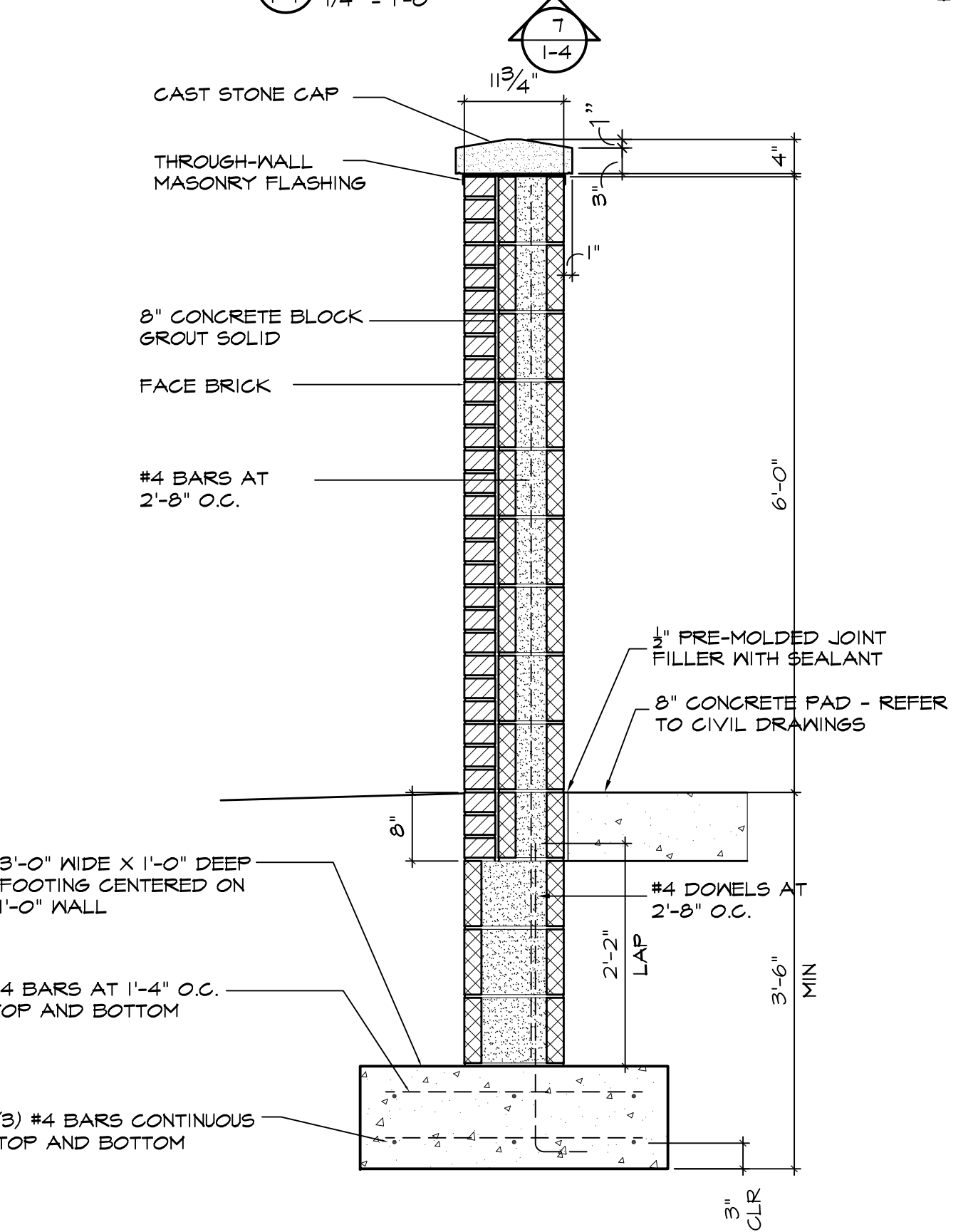
8 DUMPSTER ENCLOSURE - NORTH ELEVATION  
1/4" = 1'-0"



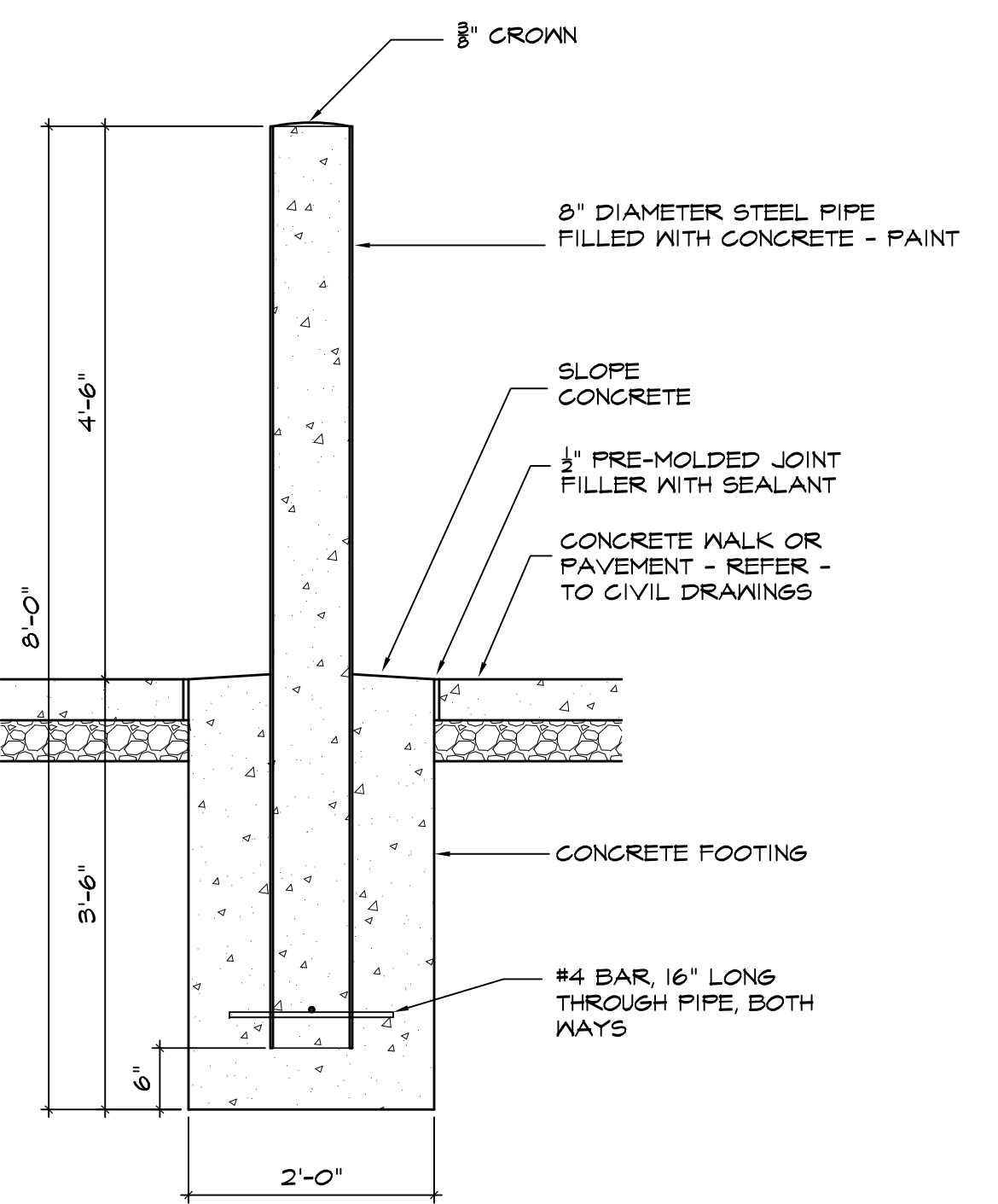
9 DUMPSTER ENCLOSURE - WEST ELEVATION  
1/4" = 1'-0"



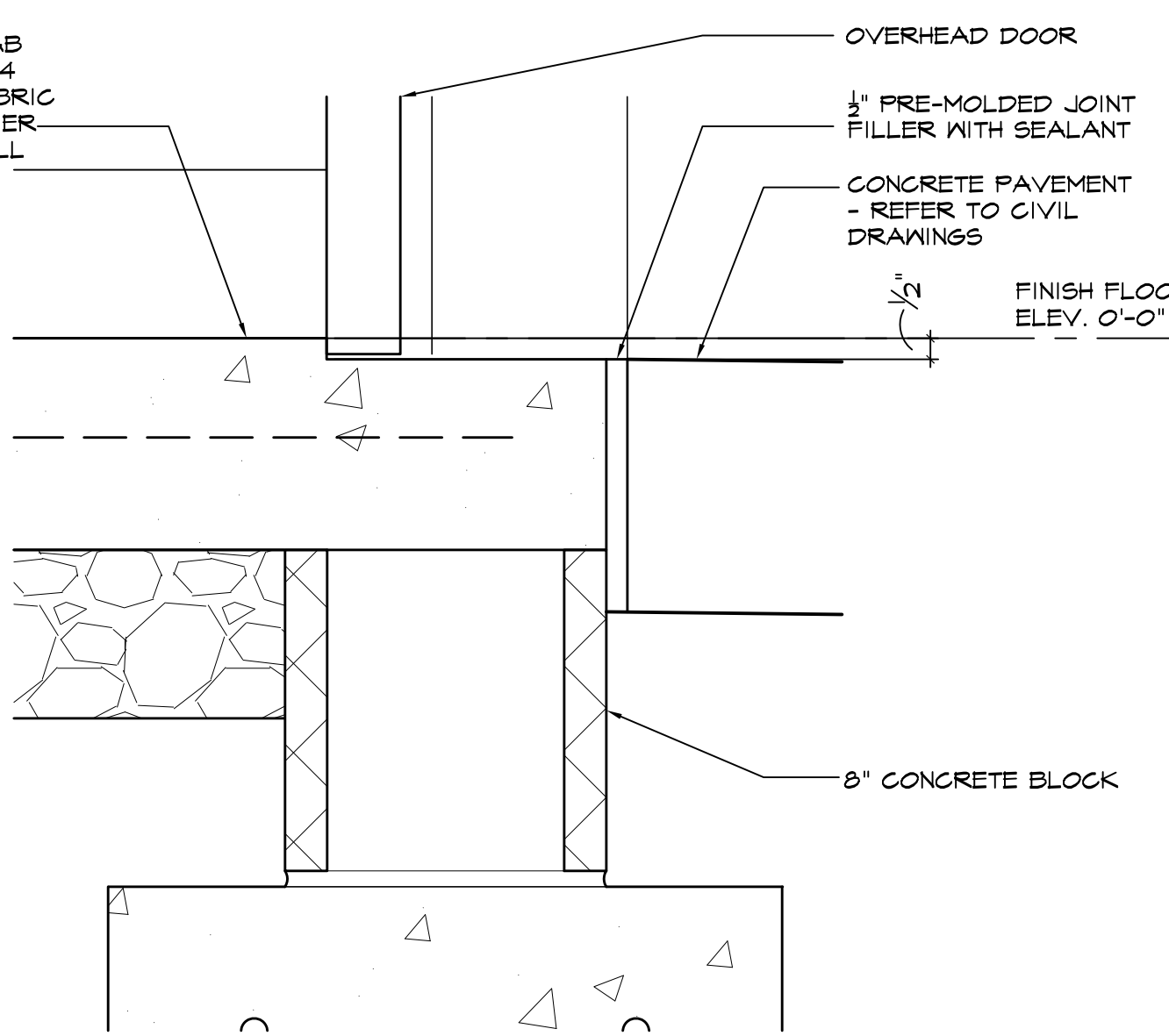
10 DUMPSTER ENCLOSURE - SOUTH ELEVATION  
1/4" = 1'-0"



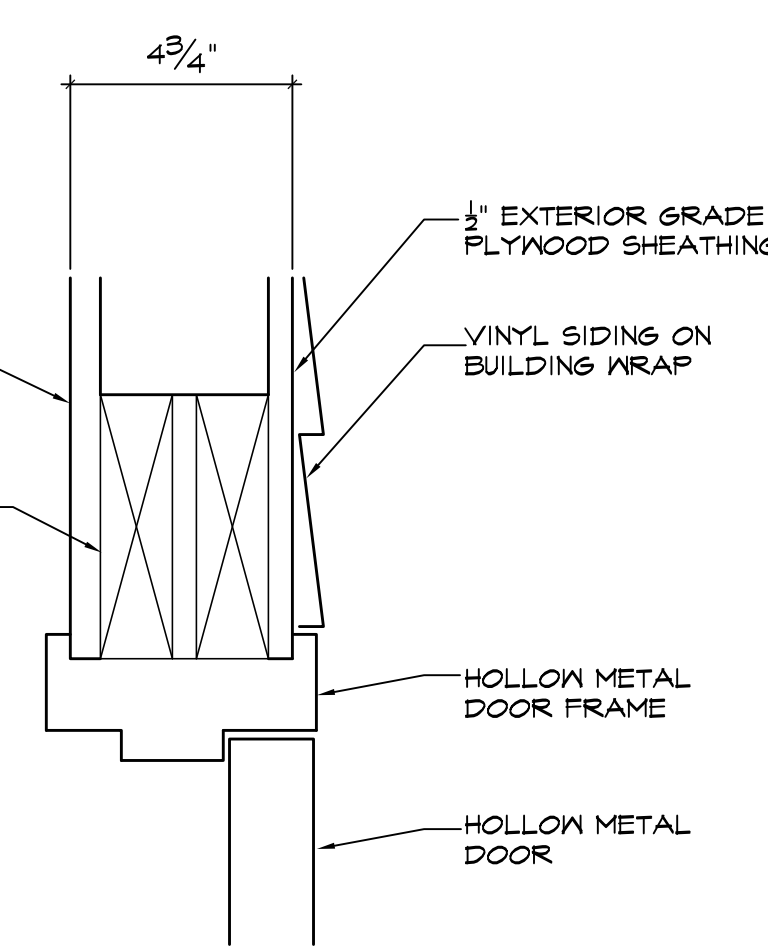
11 DUMPSTER ENCLOSURE SECTION  
3/4" = 1'-0"



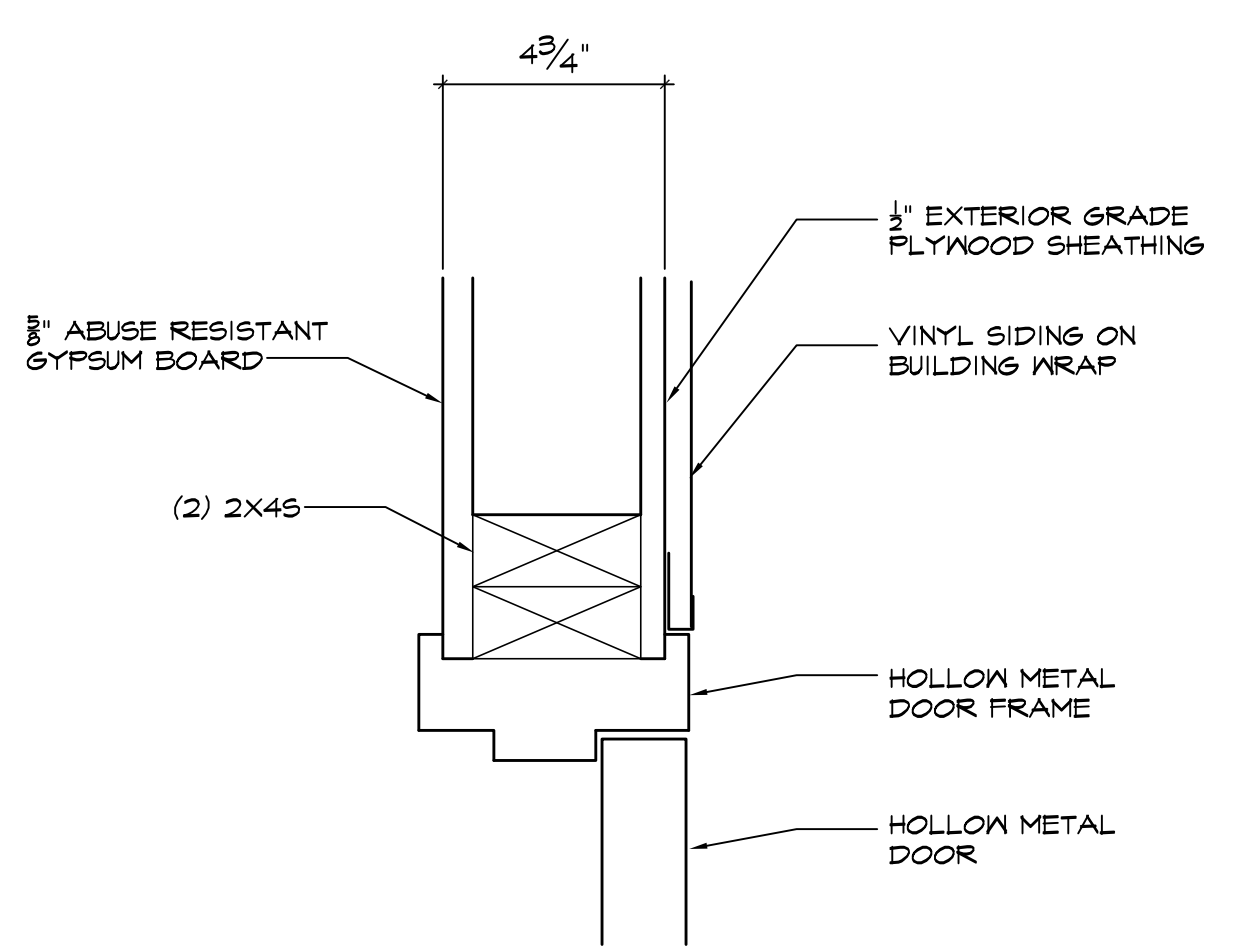
12 STEEL BOLLARD  
3/4" = 1'-0"



13 OVERHEAD DOOR SILL DETAIL  
3" = 1'-0"





14 DOOR HEAD DETAIL  
3" = 1'-0"



15 DOOR JAMB DETAIL  
3" = 1'-0"

FOR CONSTRUCTION

		CONSULTANTS:		 <div>David J. Pusti, License #7906332 Expiration Date 12/31/2013</div>	ARCHITECT/ENGINEERS:		Drawing Title DUMPSTER ECLOSURE PLANS, ELEVATIONS DETAILS		Project Title VAMC WADE PARK CLEVELAND TR HOUSE IMPROVEMENTS		Project Number 541-12-125		Office of Construction and Facilities Management
					 <div>MAKOVICH &amp; PUSTI ARCHITECTS, INC. 111 FRONT STREET, BUREAU, OHIO 44117 (440) 890-0972 FAX (440) 890-0987</div>		Approved: Project Director		Location 9401 LORAIN AVE, CLEVELAND, OHIO 44102		Drawing Number 1-4		
FINAL CD SUBMISSION		01-14-13					Date		Checked By -		Drawn By		
Revisions:		Date										Department of Veterans Affairs	