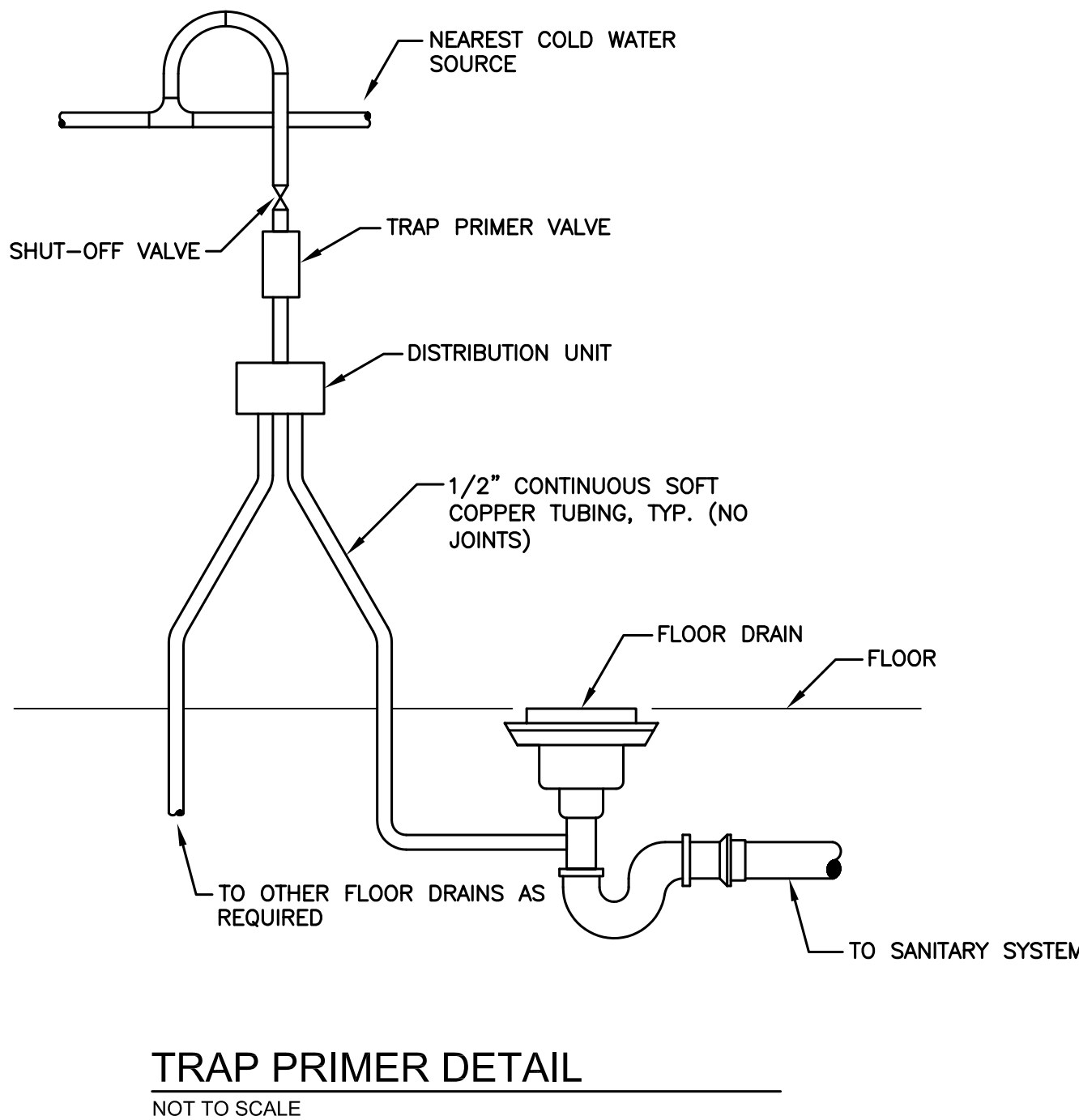
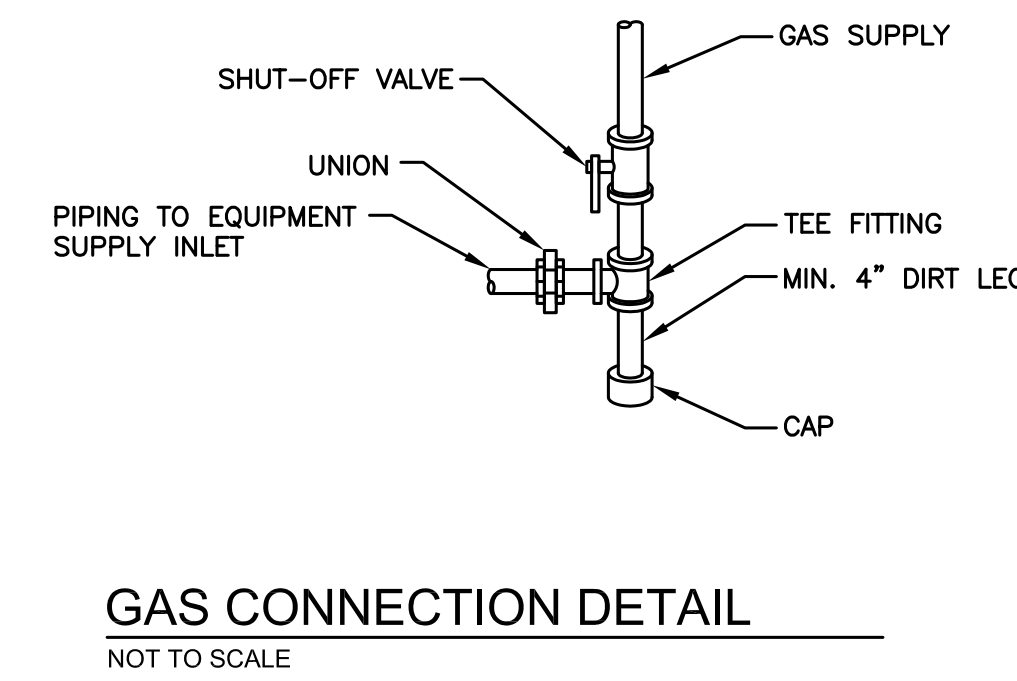
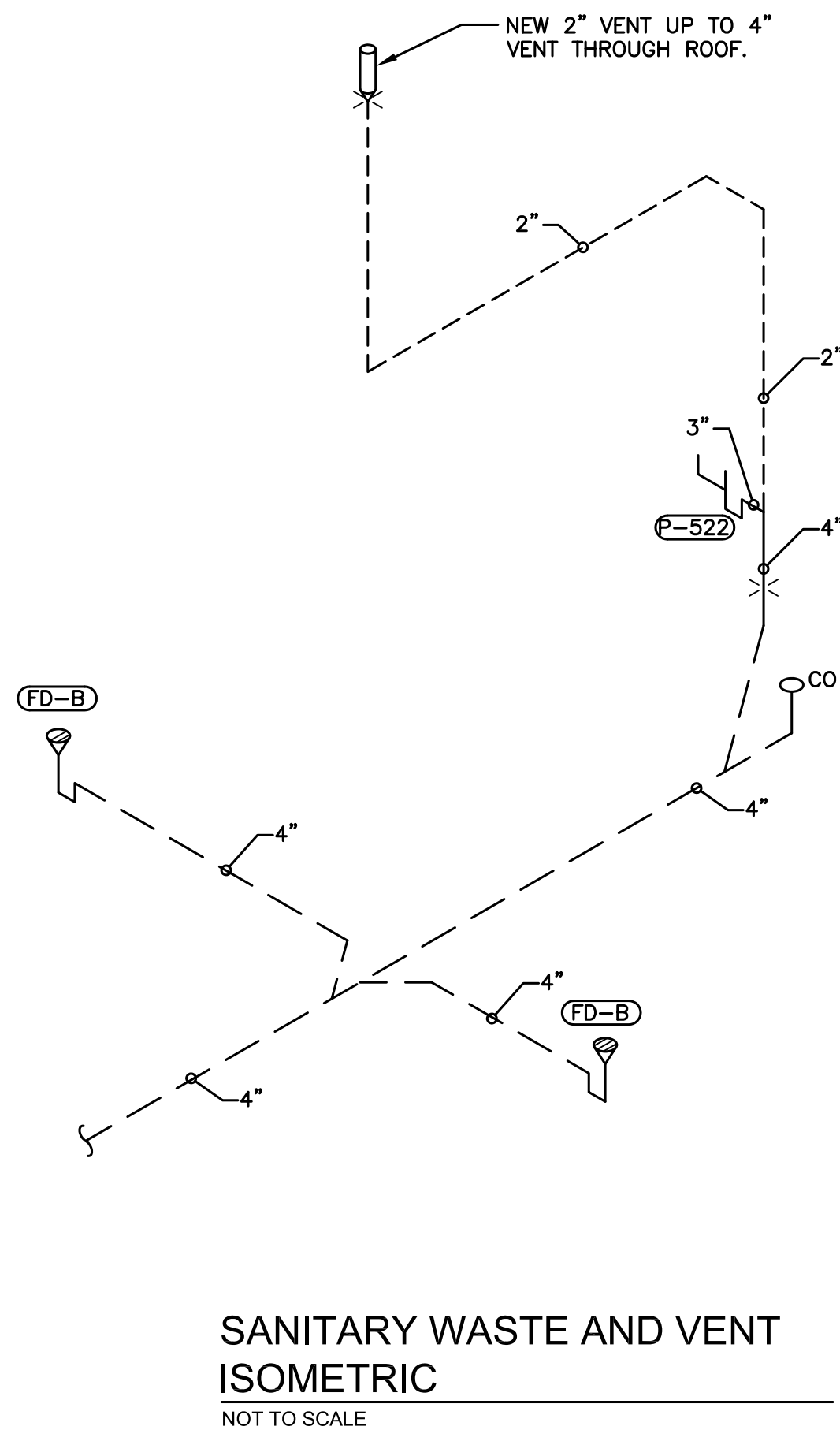


one eighth inch = one foot
one quarter inch = one foot
three eighths inch = one foot
three quarters inch = one foot
one half inch = one foot
one inch = one foot
one and one half inches = one foot
two inches = one foot
three inches = one foot
four inches = one foot
five inches = one foot
six inches = one foot
seven inches = one foot
eight inches = one foot
nine inches = one foot
ten inches = one foot
eleven inches = one foot
twelve inches = one foot
thirteen inches = one foot
fourteen inches = one foot
fifteen inches = one foot
sixteen inches = one foot
seventeen inches = one foot
eighteen inches = one foot
nineteen inches = one foot
twenty inches = one foot
twenty one inches = one foot
twenty two inches = one foot
twenty three inches = one foot
twenty four inches = one foot
twenty five inches = one foot
twenty six inches = one foot
twenty seven inches = one foot
twenty eight inches = one foot
twenty nine inches = one foot
thirty inches = one foot
thirty one inches = one foot
thirty two inches = one foot
thirty three inches = one foot
thirty four inches = one foot
thirty five inches = one foot
thirty six inches = one foot
thirty seven inches = one foot
thirty eight inches = one foot
thirty nine inches = one foot
forty inches = one foot
forty one inches = one foot
forty two inches = one foot
forty three inches = one foot
forty four inches = one foot
forty five inches = one foot
forty six inches = one foot
forty seven inches = one foot
forty eight inches = one foot
forty nine inches = one foot
fifty inches = one foot
fifty one inches = one foot
fifty two inches = one foot
fifty three inches = one foot
fifty four inches = one foot
fifty five inches = one foot
fifty six inches = one foot
fifty seven inches = one foot
fifty eight inches = one foot
fifty nine inches = one foot
sixty inches = one foot
sixty one inches = one foot
sixty two inches = one foot
sixty three inches = one foot
sixty four inches = one foot
sixty five inches = one foot
sixty six inches = one foot
sixty seven inches = one foot
sixty eight inches = one foot
sixty nine inches = one foot
seventy inches = one foot
seventy one inches = one foot
seventy two inches = one foot
seventy three inches = one foot
seventy four inches = one foot
seventy five inches = one foot
seventy six inches = one foot
seventy seven inches = one foot
seventy eight inches = one foot
seventy nine inches = one foot
eighty inches = one foot
eighty one inches = one foot
eighty two inches = one foot
eighty three inches = one foot
eighty four inches = one foot
eighty five inches = one foot
eighty six inches = one foot
eighty seven inches = one foot
eighty eight inches = one foot
eighty nine inches = one foot
ninety inches = one foot
ninety one inches = one foot
ninety two inches = one foot
ninety three inches = one foot
ninety four inches = one foot
ninety five inches = one foot
ninety six inches = one foot
ninety seven inches = one foot
ninety eight inches = one foot
ninety nine inches = one foot
one hundred inches = one foot



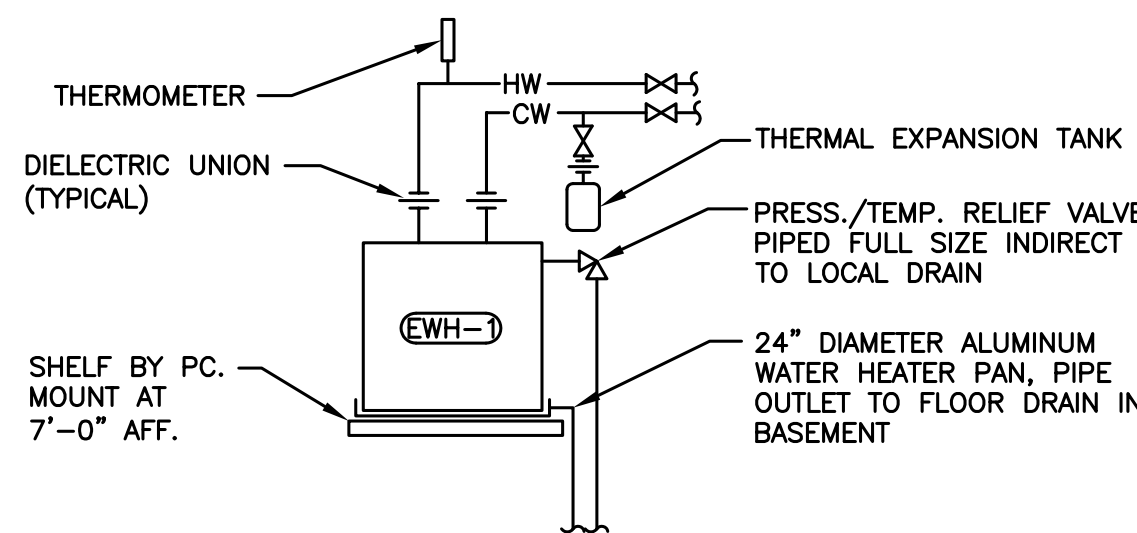
NOTES:
1. ALL FLOOR DRAINS SHALL BE PROVIDED WITH A TRAP PRIMER.

- GENERAL NOTES:**
- CONTRACTOR SHALL FIELD VERIFY ALL PRIOR TO COMMENCEMENT OF CONSTRUCTION. NOTIFY ENGINEER OF ANY CONDITIONS WHICH WILL NOT PERMIT THE WORK TO BE PERFORMED AS INDICATED ON THESE DRAWINGS.
 - COORDINATE ALL SHUT-DOWNS OF EXISTING MECHANICAL/PLUMBING SYSTEMS WITH OWNER A MINIMUM OF SEVEN WORKING DAYS IN ADVANCE.
 - PRIOR TO INSTALLATION, VERIFY PRECISE LOCATION OF NEW WALL MOUNTED DEVICES WITH OWNER AND ARCHITECT.
 - PROVIDE ADEQUATE SERVICE CLEARANCE FOR ALL MECHANICAL EQUIPMENT. REFER TO INSTRUCTIONS FROM THE EQUIPMENT MANUFACTURER.
 - NEW PIPING SHALL NOT BE ROUTED ABOVE ELECTRICAL PANELS. REFER TO ELECTRICAL DRAWINGS FOR LOCATION OF PANELS.

PLUMBING FIXTURE CONNECTION SCHEDULE

MARK	FIXTURE	BRANCH PIPE SIZE			
		CW	HW	WASTE	VENT
P-522	FLOOR-MOUNTED 2-BAY LAUNDRY TUB	1/2"	1/2"	2"	1-1/2"
P-801	FREEZE-PROOF WALL HYDRANT	3/4"	-	-	-
FD-B	FLOOR DRAIN	-	-	4"	-

- NOTES:
1. MINIMUM 2" SANITARY WASTE UNDERSLAB.
2. REFER TO SPECIFICATIONS FOR ADDITIONAL INFORMATION.



SHELF MOUNTED ELECTRIC WATER HEATER

NOT TO SCALE

DOMESTIC WATER HEATER

MARK	EW-1
STYLE	SHELF MOUNTED
TYPE	ELECTRIC
DIMENSIONS (L x W x H)	18"9 x 18.5"1
KW	2.0
GALLONS STORAGE	10
VOLTS/PHASE/HERTZ	120/1/60
COLOR	WHITE
ASME RATED / UL LISTED	YES
BASIS OF SPECIFICATION	
MANUFACTURER	A.O. SMITH
MODEL	DEL-10

MECHANICAL SYMBOLS:

- (A) REFERENCE TO CODED NOTE
(PXXX) EQUIPMENT OR FIXTURE MARK
CTE CONNECT TO EXISTING
VTR VENT THROUGH ROOF
PC PLUMBING CONTRACTOR
GC GENERAL CONTRACTOR
—SAN— SANITARY WASTE
—USAN— SANITARY WASTE BELOW GRADE
—V— PLUMBING VENT
—CW— DOMESTIC COLD WATER SUPPLY
—HW— DOMESTIC HOT WATER SUPPLY
—G— NATURAL GAS
CO CLEANOUT
X EXISTING TO REMAIN
XR EXISTING TO BE REMOVED
ISOLATION VALVE
CHECK VALVE
UNION
REDUCER
STRAINER
BALANCING VALVE
PIPE SLEEVE
CONNECT TO EXISTING
THERMOSTAT

GAS-FIRED UNIT HEATER

MARK	GFUH-1
AIR FLOW (CFM)	1650
FAN DRIVE	DIRECT
MOTOR SIZE (HORSEPOWER)	1/8
MOTOR VOLTS-PHASE-HERTZ	115-1-60
FURNACE HEATING PERFORMANCE	
FUEL	NAT. GAS
INPUT CAPACITY (MBH)	85
OUTPUT CAPACITY (MBH)	79.1
EFFICIENCY	93%
DIMENSIONS	36"Wx22"Lx19"H
BASIS OF SPECIFICATION	
MANUFACTURER	MODINE
MODEL	PTC 85AS
WEIGHT (LBS)	125

- NOTES:
1. SINGLE STAGE, DIRECT SPARK IGNITION. 100% SHUT-OFF WITH CONTINUOUS RETRY.
2. REMOTE MOUNTED THERMOSTAT. PROVIDE ALL NECESSARY WIRING.
3. CONDENSATE PUMP WITH SUSPENSION KIT.
4. MOUNT FROM STRUCTURE WITH THREADED ROD AND VIBRATION ISOLATORS.
5. PROVIDE WITH MANUFACTURER'S HORIZONTAL CONCENTRIC VENT KIT. KIT SHALL ALLOW THE VENT OUTLET AND COMBUSTION AIR INLET PIPES TO PENETRATE THE BUILDING WALL THROUGH A SINGLE OPENING.
6. UL LISTED.
7. PROVIDE 115-24V STEPDOWN TRANSFORMER.
8. PROVIDE LOW VOLTAGE TERMINAL BOARD FOR DIRECT WIRING CONNECTION TO EXTERNAL THERMOSTAT.

FOR CONSTRUCTION

Revisions:	1	2	3	4	5	6	7	8	9			
FINAL CD SUBMISSION	01-14-13	CONSULTANTS:			ARCHITECT/ENGINEERS:			Drawing Title MECHANICAL LEGEND, SCHEDULES, DETAILS, AND NOTES	Project Title VAMC WADE PARK CLEVELAND TR HOUSE IMPROVEMENTS	Project Number 541-12-125	Office of Construction and Facilities Management Department of Veterans Affairs	
Date								Approved: Project Director	Location 9401 LORAIN AVE, CLEVELAND, OHIO 44102	Building Number		
									Date 01-14-13	Checked By LDH	Drawn By LDH	Drawing Number 1-M1