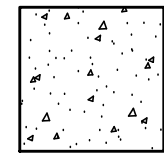
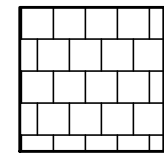


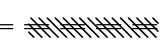
# LEGEND



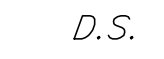
EXISTING CONCRETE WALK, DRIVE OR PARKING LOT TO BE REMOVED



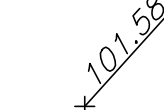
EXISTING ASPHALT PAVEMENT TO BE REMOVED.



EXISTING CURB TO BE REMOVED



D.S. GUTTER DOWNSPOUT



EXISTING PAVEMENT ELEVATION

- ① EXISTING CONCRETE WALK TO BE REMOVED. SAW CUT EXISTING WALK FULL DEPTH AT EXISTING JOINTS.
- ② EXISTING CONCRETE CURB TO BE REMOVED. REMOVE CURB WITHIN LIMITS OF CONCRETE WALK REMOVAL.
- ③ EXISTING CONCRETE PARKING LOT/DRIVE APRON TO BE REMOVED.
- ④ EXISTING SHED TO BE REMOVED IN ITS ENTIRETY.
- ⑤ EXISTING CONCRETE PAD TO BE REMOVED - SEE PLAN NOTE.
- ⑥ EXISTING GENERATOR ON CONCRETE PAD - DO NOT DISTURB - COORDINATE W/UNDERGROUND UTILITY.
- ⑦ EXISTING TREES/SHRUBS TO BE REMOVED.
- ⑧ EXISTING FENCE, INCLUDING SWING-IN MAN GATE AND DOUBLE SWINGING VEHICULAR GATE, TO BE REMOVED.
- ⑨ REMOVE EXISTING BURIED FOUNDATION TO A DEPTH OF SEVEN (7) FEET BELOW FINISHED GRADE. DISPOSE ALL FOUNDATION AND FOREIGN MATERIAL OFFSITE. FILL VOIDS AND CAVITIES CREATED AS PART OF THE FOUNDATION REMOVAL IN ACCORDANCE WITH THE OHIO DEPARTMENT OF TRANSPORTATION (ODOT) CONSTRUCTION AND MATERIAL SPECIFICATIONS (CMS) ITEM 203. SPREAD ALL EMBANKMENT MATERIAL IN SUCCESSIVE HORIZONTAL LOOSE LIFTS, NOT TO EXCEED 8 INCHES. COMPACT ALL EMBANKMENT MATERIAL LIFTS TO THE SPECIFIED MOISTURE CONTROLS ON ODOT CMS 203.07. THE SIZE AND LOCATION OF THE EXISTING FOUNDATION SHOWN ON THIS PLAN IS APPROXIMATE.
- ⑩ EXISTING HEDGE ROW AND MULCH BED TO BE REMOVED.
- ⑪ EXISTING PAVEMENT TO BE REMOVED. NOTE THAT THE EXISTING PAVEMENT COMPOSITION IS UNKNOWN. REMOVE ALL CURB, ASPHALT, CONCRETE, BRICK AND STONE BASE DOWN TO SUBGRADE LEVEL. FILL CAVITY WITH ODOT CMS ITEM 203 EMBANKMENT TO FINISHED GRADE.
- ⑫ SAW CUT EXISTING PAVEMENT FULL DEPTH.
- ⑬ CAREFULLY REMOVE AND STORE ON-SITE 16± LINEAR FEET OF EXISTING WOOD FENCE.
- ⑭ UNDERGROUND ELECTRIC CONDUITS FOR GENERATOR - COORDINATE DEMOLITION WORK AS TO NOT DISTURB EXISTING CONDUITS.

## NOTES

1. COORDINATE GUY WIRE SUPPORT WITH DEMOLITION AND NEW WORK, TYP.

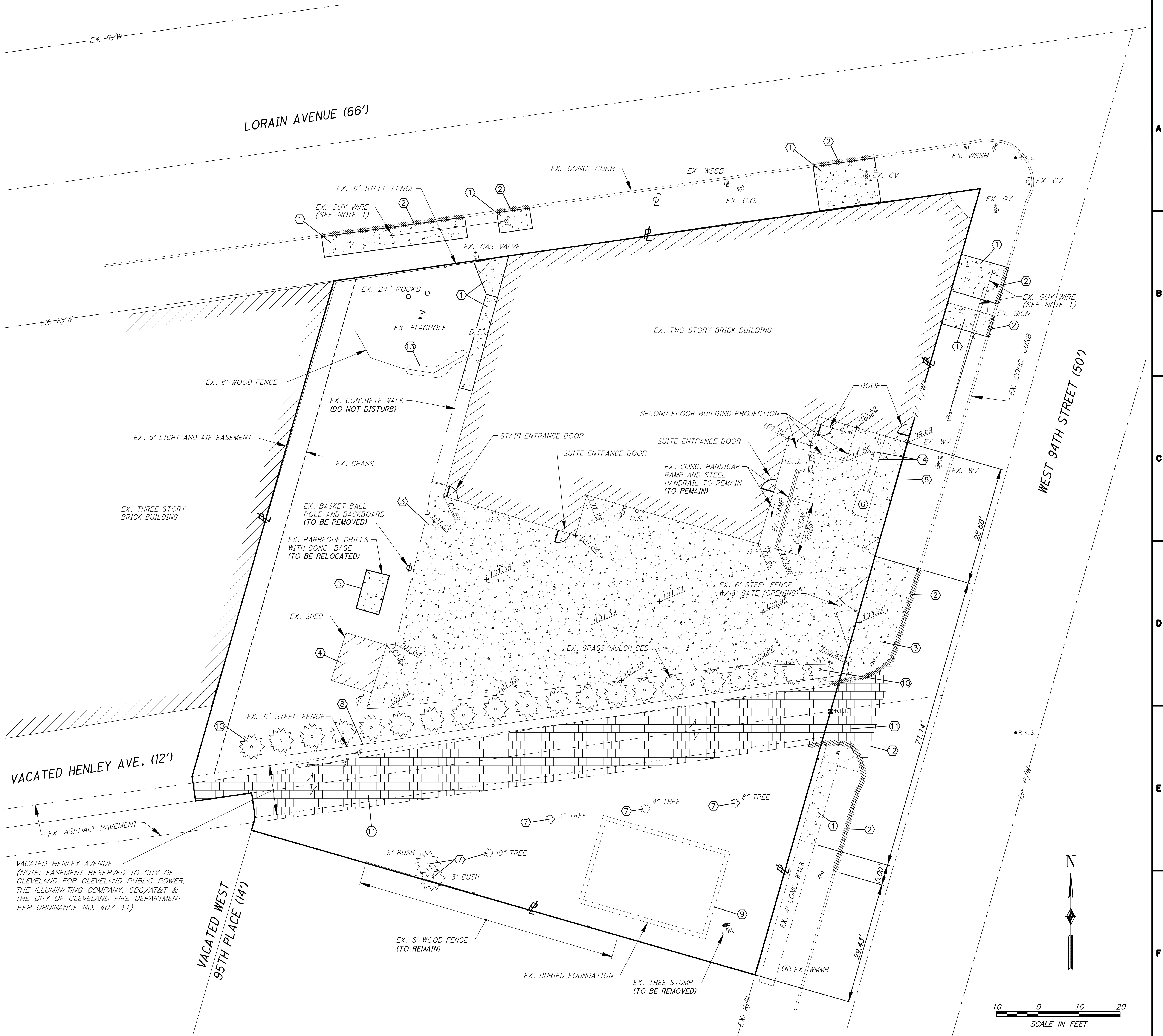
## BENCHMARK

MAG NAIL SET IN SIDEWALK AT SOUTHWEST CORNER OF LORAIN AVE. / WEST 94TH STREET INTERSECTION - ELEV. 98.69

MAG NAIL SET IN SIDEWALK ON THE EAST SIDE OF WEST 94TH STREET DIRECTLY ACROSS FROM VACATED HENLEY AVE. - ELEV. 100.00

## UNDERGROUND UTILITIES

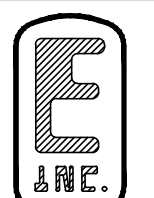
**TWO WORKING DAYS  
BEFORE YOU DIG**  
CALL...800-362-2764 (Toll Free)  
OHIO UTILITIES  
PROTECTION SERVICE  
NON-MEMBERS  
MUST BE CALLED DIRECTLY



10 0 10 20  
SCALE IN FEET

FOR CONSTRUCTION

## CONSULTANTS:



**EUTHENICS INC.**  
CONSULTING ENGINEERS  
8238 SQUARE DR., CINCINNATI, OHIO 45240  
PHONE: (513) 363-1333 • FAX: (513) 363-1344



## ARCHITECT/ENGINEERS:



**MAKOVICH & PUSTI**  
ARCHITECTS, INC.  
111 FRONT STREET, BUREAU, OHIO 44017  
(440) 891-0910 • FAX: (440) 891-0900

Drawing Title  
**DEMOLITION PLAN**

Approved: Project Director

Project Title  
**VAMC WADE PARK CLEVELAND  
TR HOUSE IMPROVEMENTS**

Location  
9401 LORAIN AVE., CLEVELAND, OHIO 44102

Date: 12/06/12  
Checked By: RAB  
Drawn By: ARP

Project Number  
541-12-125

Building Number

Drawing Number  
**C-1**

Office of  
Construction  
and Facilities  
Management