
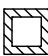




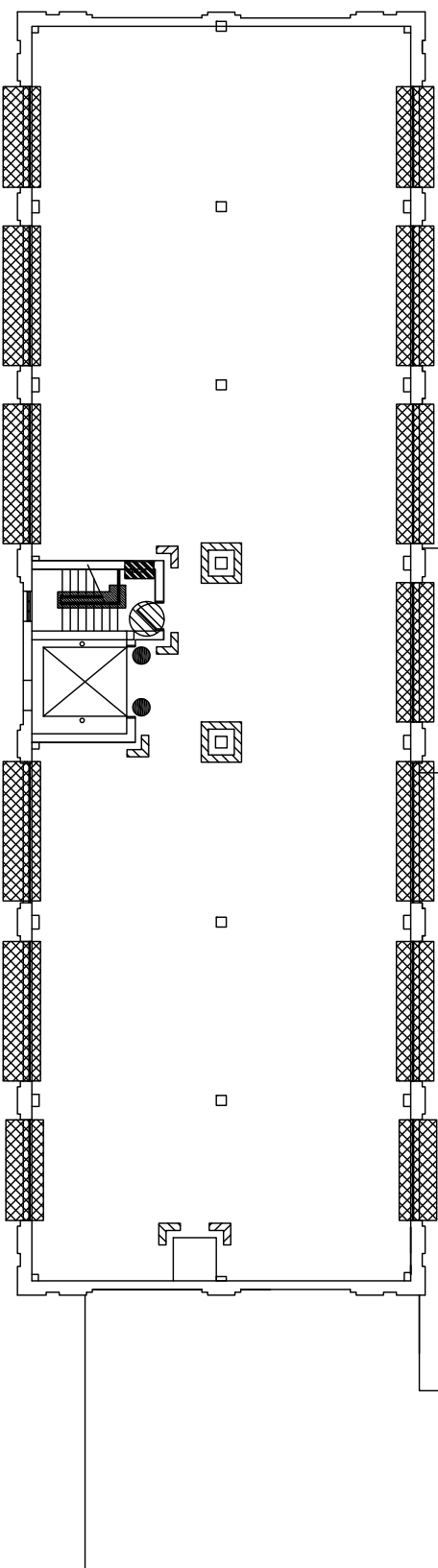


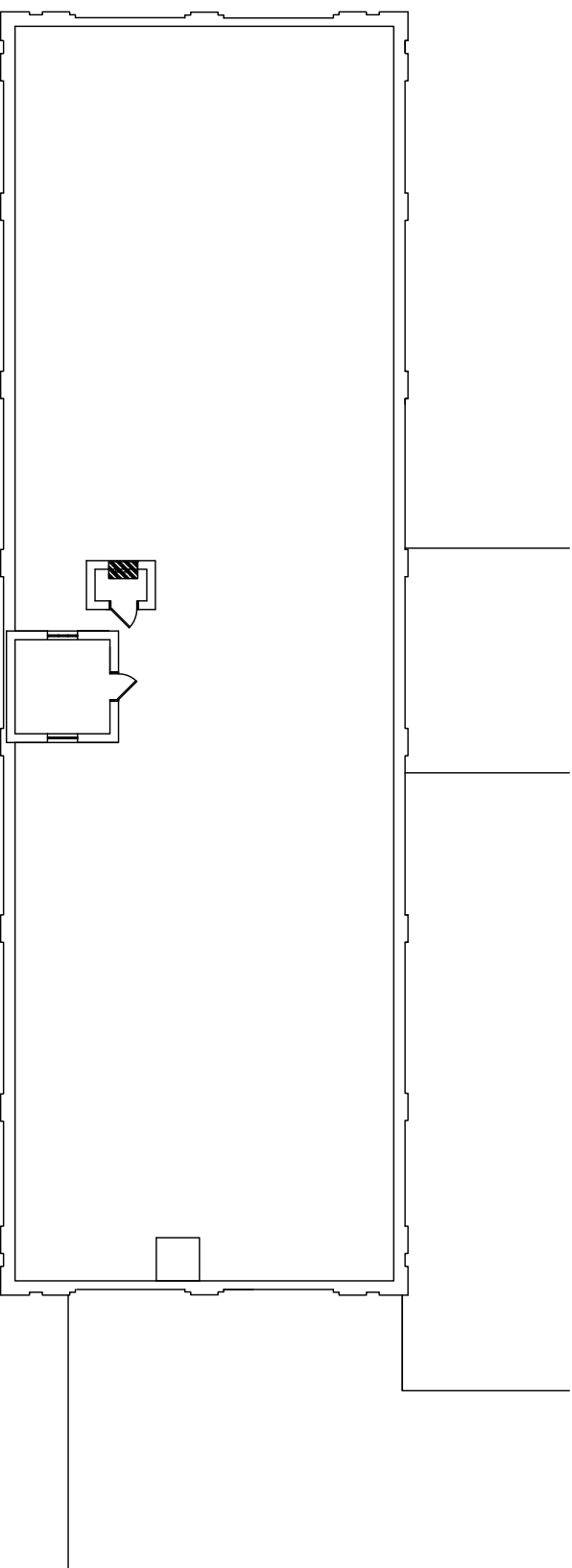
COMPONENT	REMOVAL METHOD
 LEAD-BASED PAINT ON WINDOWS LEAD-BASED PAINT ON COLUMNS	1
 LEAD-BASED PAINT LADDER	1
 LEAD-BASED PAINT ON CORNER GUARDS	1
 LEAD-BASED PAINT ON DOORS	1
 LEAD-BASED PAINT ON STAIR RAILING	1
 LEAD-BASED PAINT ELEVATOR DOOR FRAME	1

REMOVAL METHOD

1. REMOVE LEAD-BASED PAINT UTILIZING CHEMICAL STRIPPING AND/OR ABRASIVE BLASTING METHODS THAT ARE COMPATIBLE WITH SUBSTRATE.




LEVEL THREE FLOOR PLAN - WAREHOUSE




ROOF PLAN - WAREHOUSE

	BID DOCUMENTS	3-08-2013
No.	Revisions:	Date

CONSULTANTS:

The IEA logo is located in the top right corner of the page. It consists of the letters 'IEA' in a bold, sans-serif font, with a stylized graphic element to its right that resembles a sun or a stylized 'E'.

ARCHITECT/ENGINEERS:

 **ANDERSON
ENGINEERING**

ENGINEERING • ARCHITECTURE • LAND SURVEYING
ENVIRONMENTAL SERVICES • LANDSCAPE ARCHITECTURE

Drawing Title	LEAD-BASED PAINT REMEDIATION PLANS LEVEL, THREE FLOOR PLAN AND ROOF
Approved: Project Director	

Project Title	LEAD ABATEMENT-REMEDIATION PLAN			Project Number 618-12-303
Location	FORT SNELLING, MINNEAPOLIS, MN			Building Number 222
Date 3-08-2013	Checked	Drawn	Dwg. 4 of 15	