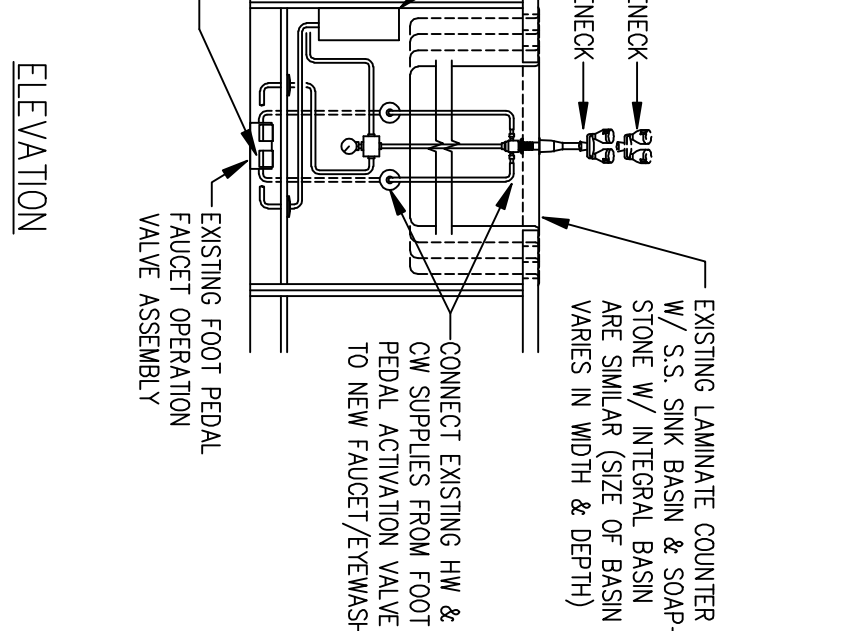
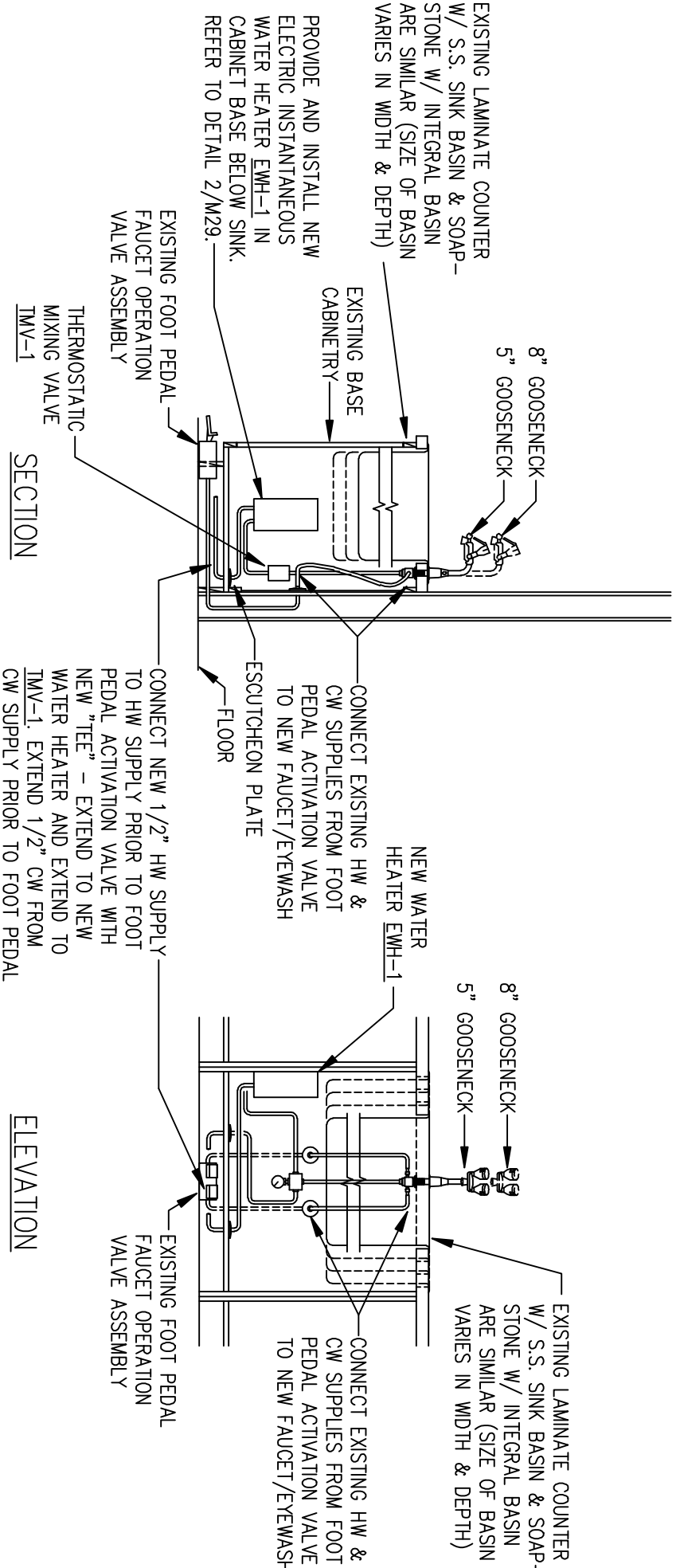
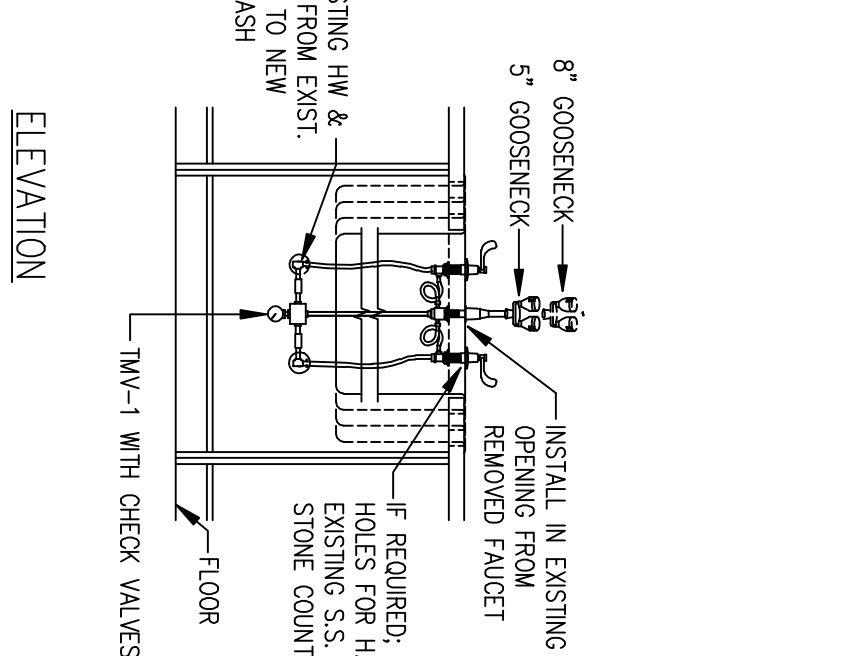
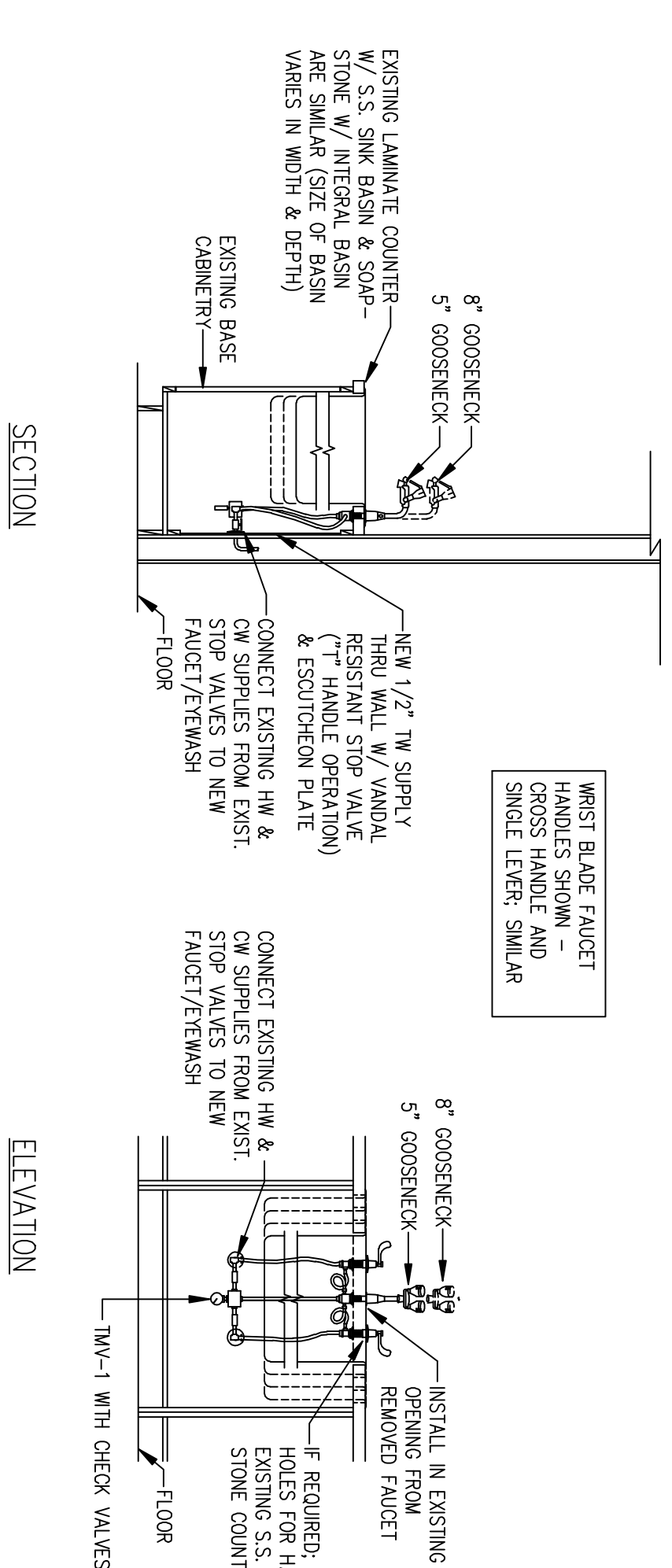


1 FOOT OPERATED HOT/COLD WATER FAUCET  
SCALE: 1/2"=1'-0"  
M28



2 INSTANTANEOUS WATER HEATER IN CABINET W/  
M28 FOOT OPERATED HOT/COLD WATER FAUCET  
SCALE: 1/2"=1'-0"



3 HAND OPERATED HOT/COLD WATER FAUCET  
M28 SCALE: 1/2"=1'-0"


[illegible]

**ARCHITECT:**

Wolfgang|Knutson Architects Ltd.

300 W. BENTLEY RD.  
SUITE 7-300  
EAST WYOMING, WY  
83021

T 800-698-8284  
F 307-698-8303



I HEREBY CERTIFY THAT THIS PLAN, SPECIFICATIONS AND CONTRACT DOCUMENTS PREPARED BY ME OR UNDER MY CLOSE PERSONAL SUPERVISION AND THAT I AM A DULY LICENSED ENGINEER UNDER THE LAWS OF THE STATE OF MINNESOTA.

REGISTRATION NUMBER: 18609

\_\_\_\_\_  
THOMAS A. WENZT

*Dr./Inventor and Strategic Advisory, Immunovet, Minneapolis*

**Drawing Scale**

**SEE DRAWINGS**

**Plot Scale**

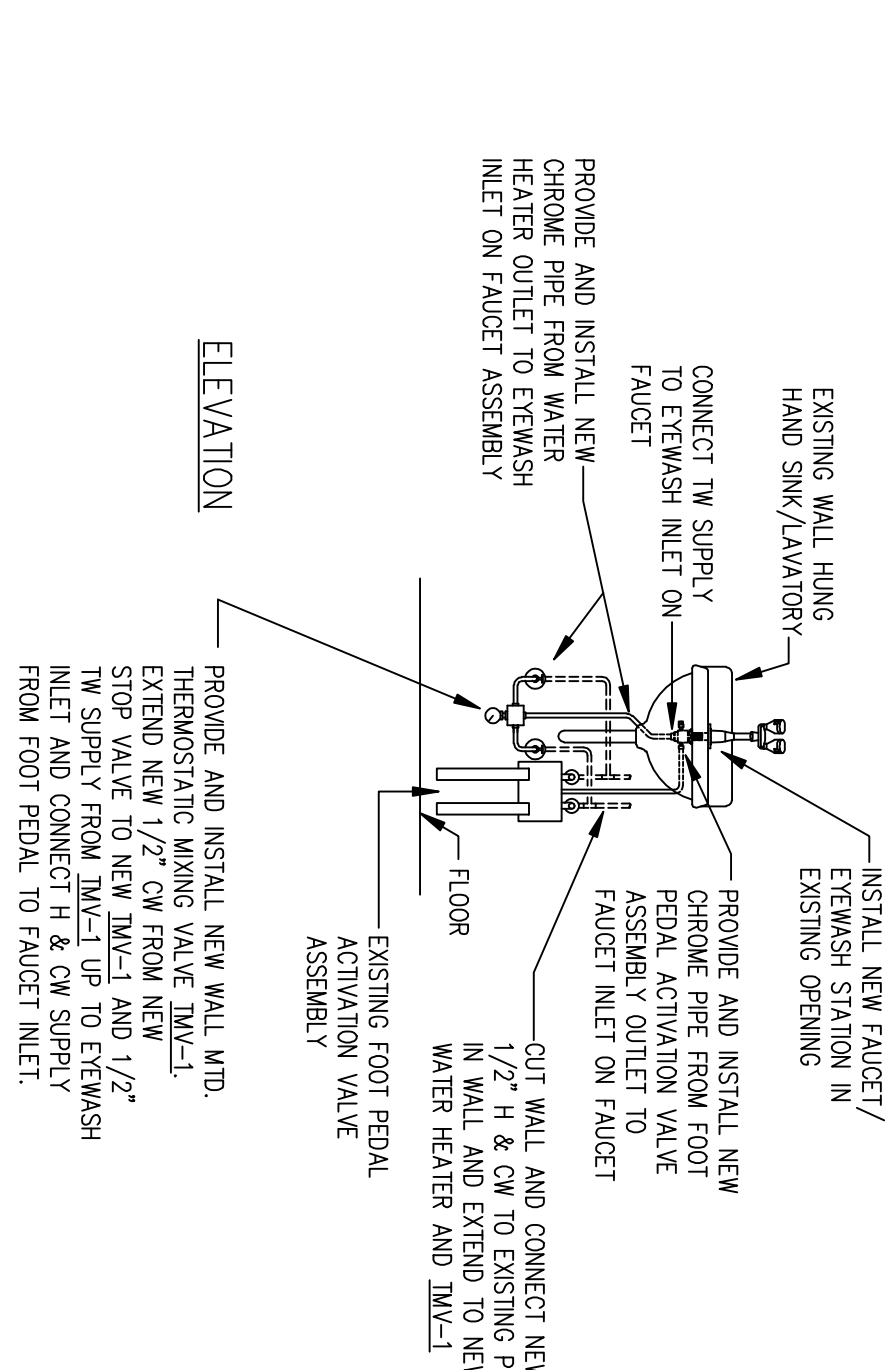
1" = 1"

Drawing Title  
MECHANICAL DETAILS  
-- BUILDING's 49,69,70,72 & 222  
Approved SEE SHEET C1  
REVISION #1 BY VA

Project Title	Project Number
<b>EYEWASH REPLACEMENTS</b>	618--08--138
	Building Number
	Drawing Number
Location	1164-M28
VA HOSPITAL, MINNEAPOLIS, MN	REV 1 of 58
Date	
4.7.09	
Checked	
CHW	
Drawn	
TL	

**Office of  
Facilities  
Management**

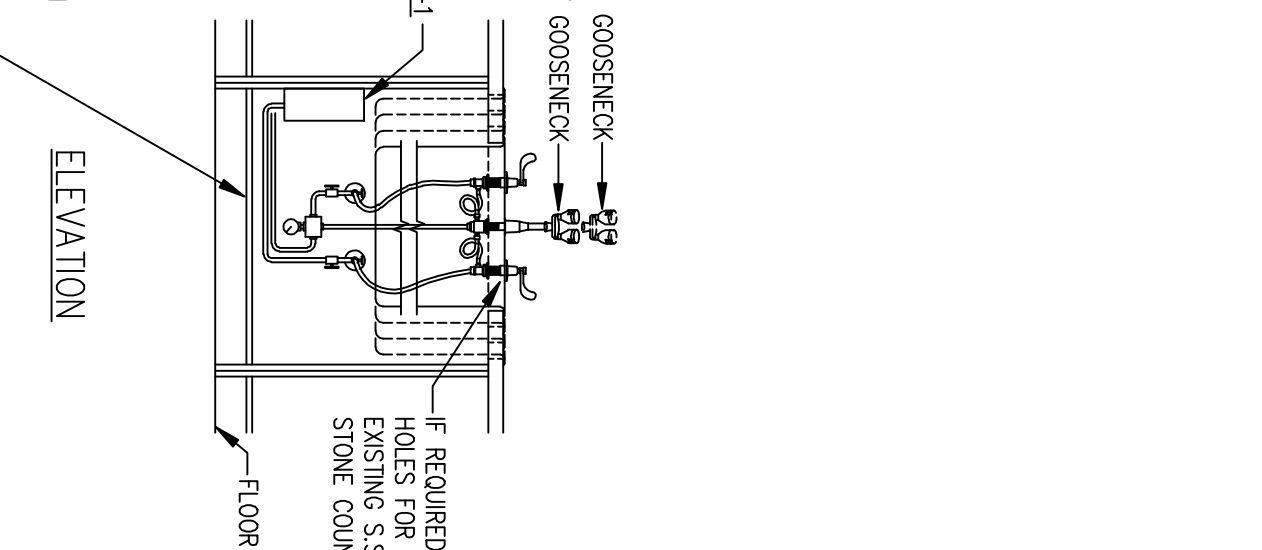
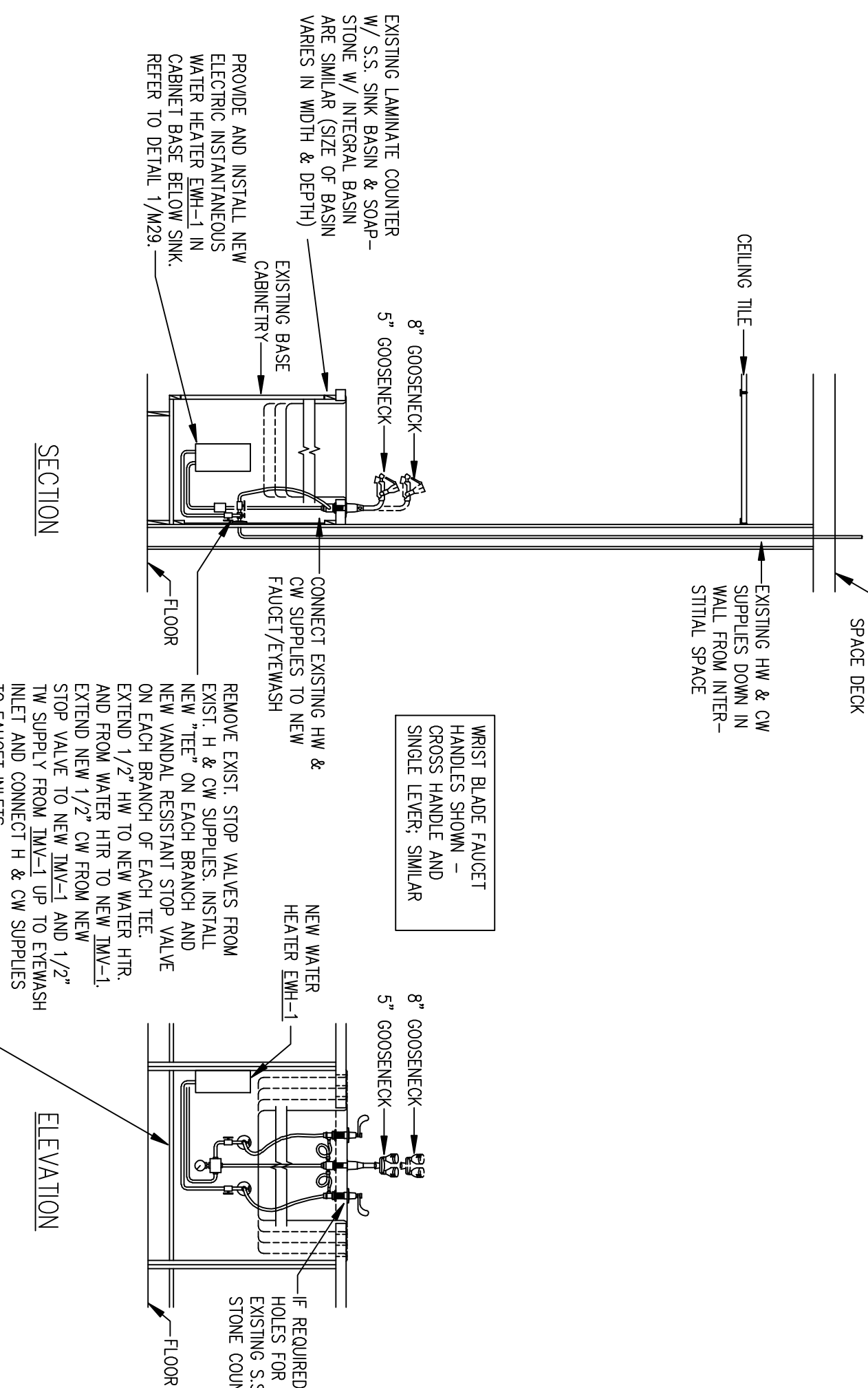
 Department of  
Veterans Affairs



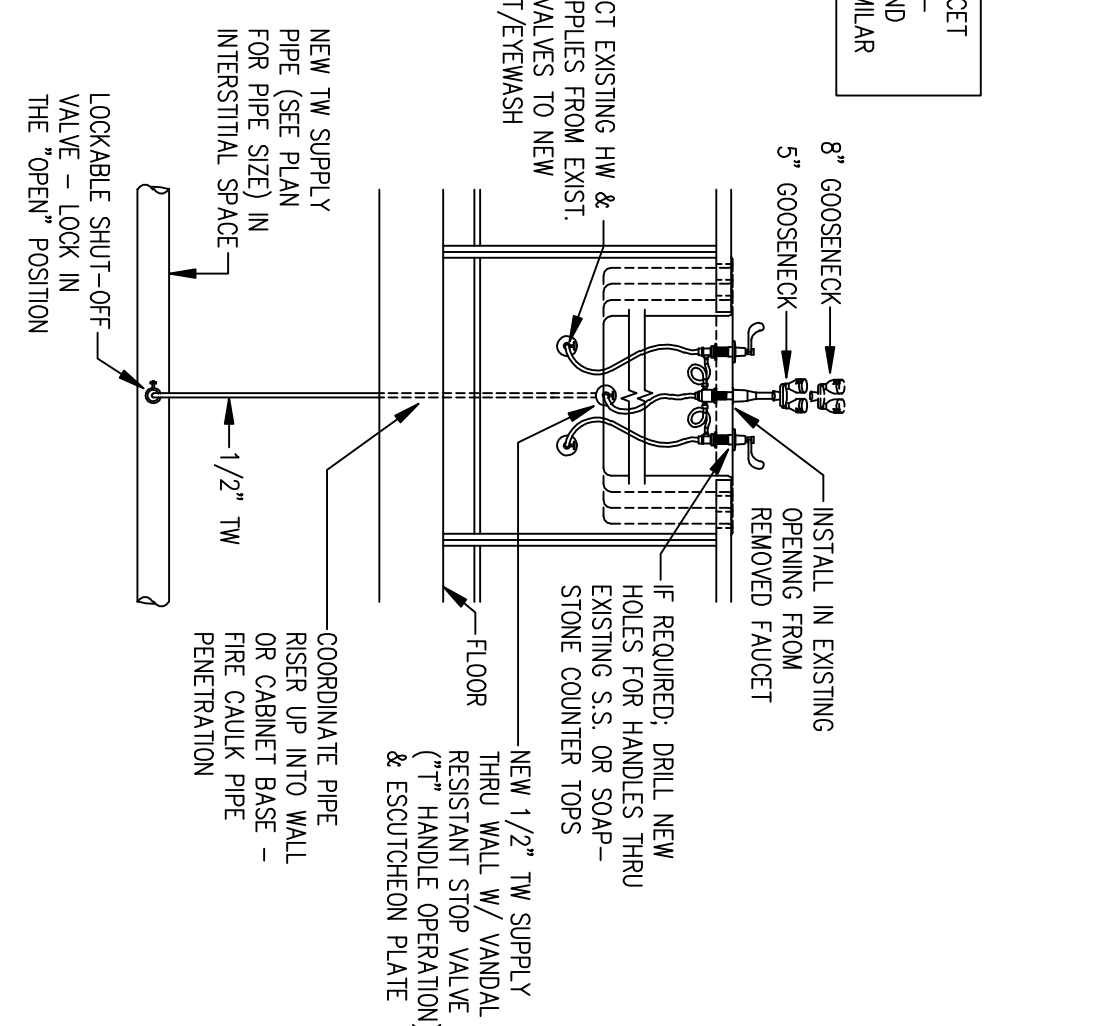
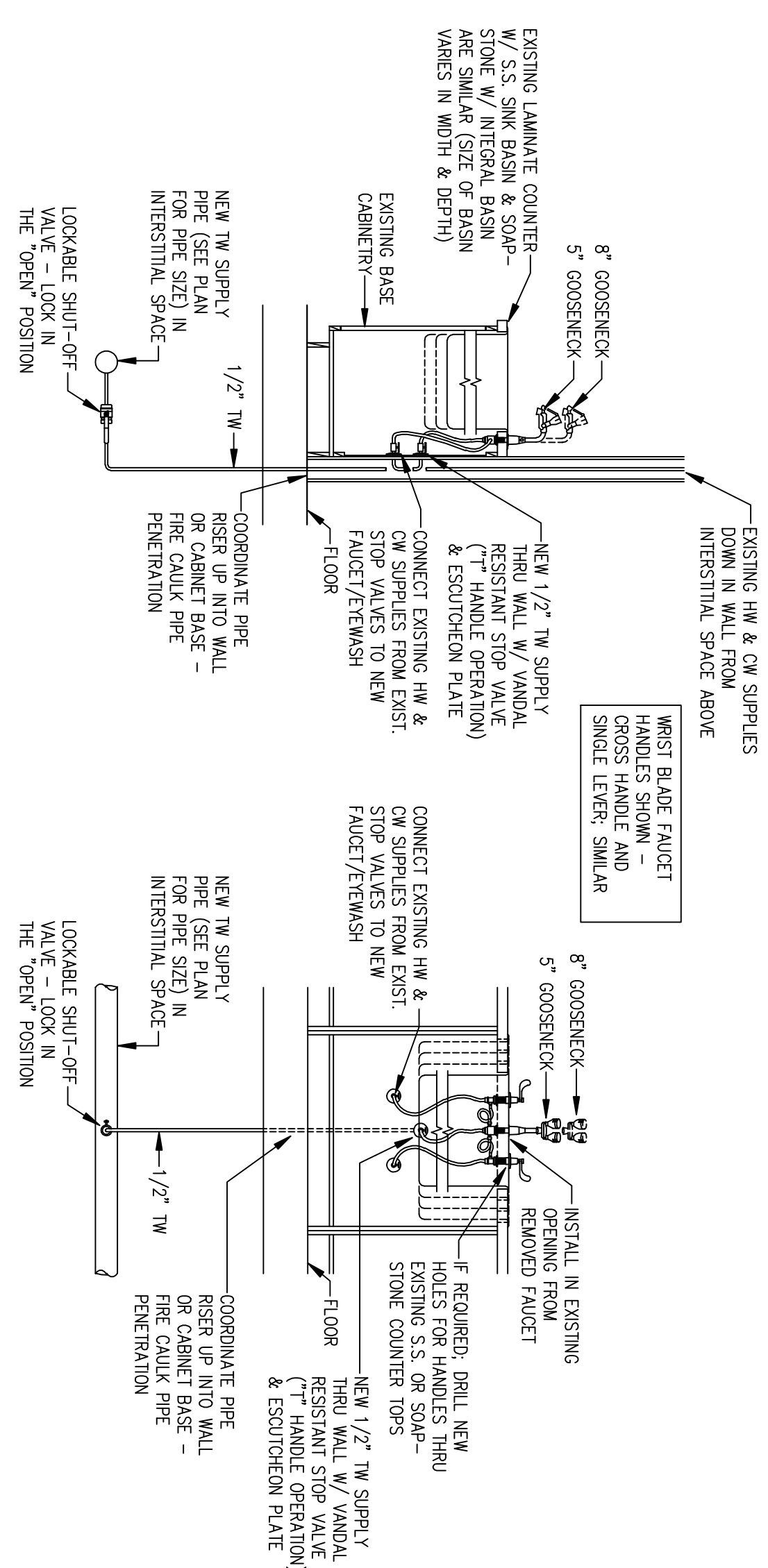
4  
M28

FOOT OPERATED HOT/COLD WATER FAUCET

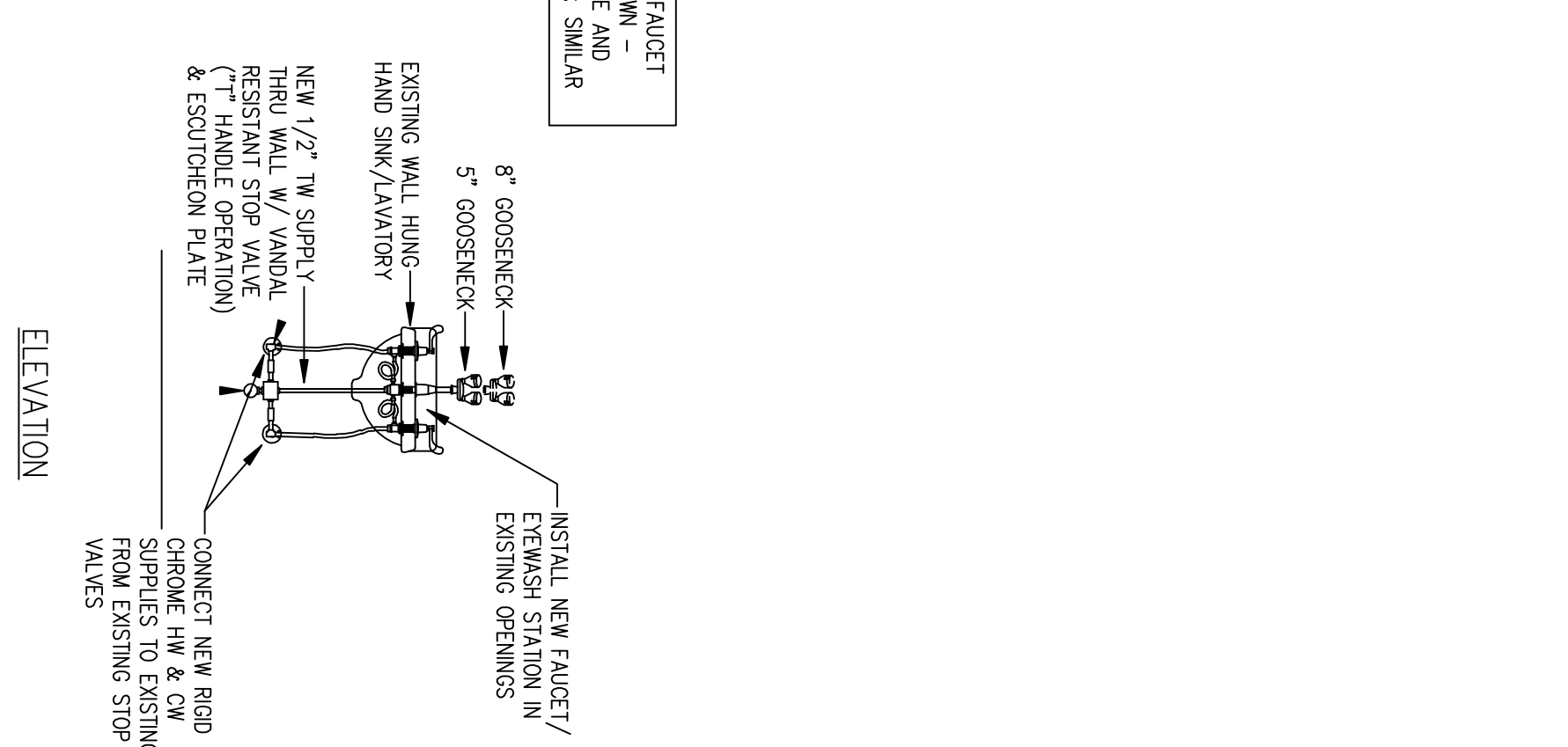
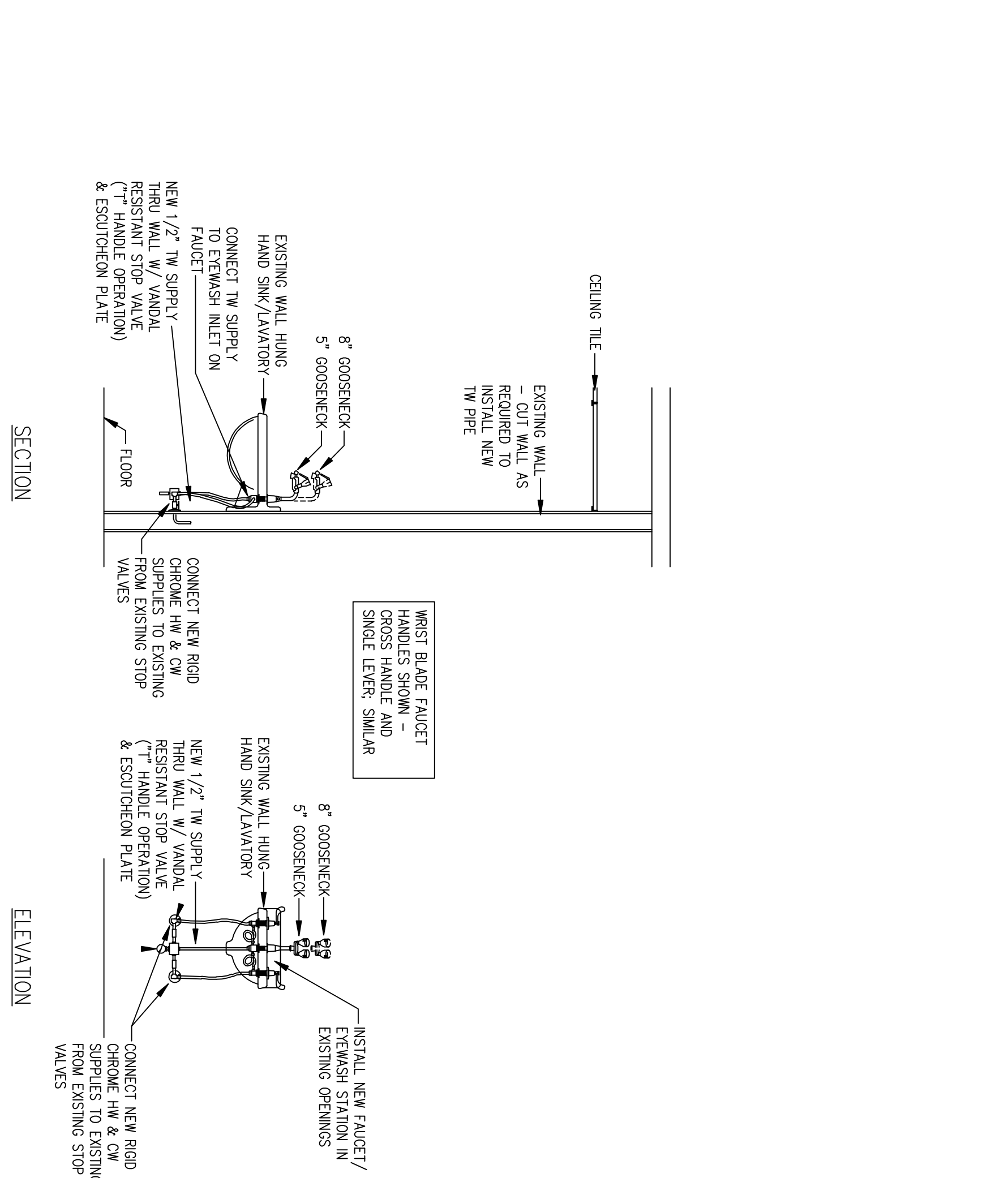
SCALE: 1/2"=1'-0"



5 INSTANTANEOUS WATER HEATER IN CABINET W/  
M28 HAND OPERATED HOT/COLD WATER FAUCET  
SCALE: 1/2"=1'-0"



6	HAND OPERATED HOT/COLD WATER FAUCET
M28	SCALE: 1/2"=1'-0" (SERVICE FROM BELOW)



7 HAND OPERATED HOT/COLD WATER FAUCET  
M28 SCALE: 1/2"=1'-0" (SERVICE FROM ABOVE)