[illegible]

**CONSTRUCTION DOCUMENTS
FULLY SPRINKLERED**



8055 E. Tufts Avenue, Suite 1100
Denver, Colorado 80237
(303) 779-1222
FAX: (303) 694-9144
www.ssr-inc.com
SSR JOB #: 12530330

EFT ARCHITECTS

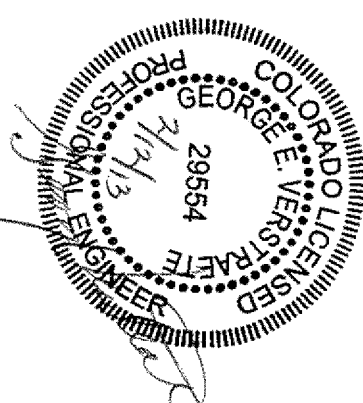
265 EAST 100 SOUTH SUITE 350
SALT LAKE CITY, UTAH 84111-1604
801.521.8564 WWW.EFTARCH.COM

DEPARTMENT OF VETERANS AFFAIRS

MEDICAL CENTER
1055 Clermont Street
Denver, Colorado, 80220

Drawing title **ELECTRICAL NOTES, LEGENDS, AND** **ABBREVIATIONS**

Drawing Title ELECTRICAL NOTES, LEGENDS, AND ABBREVIATIONS	Project Title SPS PIPING AND EQUIPMENT SITE PREP			Project Number 554-12-810
	Location DENVER VA MEDICAL CENTER			Building Number BUILDING 1
	Date 12 FEB. 2013	Checked GEV	Drawn TAH	Dwg. Number E000 Dwg. 15 of 19
Approved: Project Director				



KEY NOTES

[illegible]

ELECTRICAL ABBREVIATIONS

ELECTRICAL ABBREVIATIONS			
ABBR.	DEFINITION	ABBR.	DEFINITION
A	AMPERE	JB	JUNCTION BOX
ABC	ABOVE COUNTER	KV	KILOVOLT
AC	ALTERNATING CURRENT	KVA	KILOVOLT-AMPERE
AF	AMPERE FUSE	KW	KILOWATT
AFB	ABOVE FINISHED FLOOR	LG	LIGHTING
AHU	AIR HANDLING UNIT	MAX	MAXIMUM
KAC	AMPS INTERRUPTING CAPACITY x1000	MB	MAN O'WAR BREAKER
AMP	AMPERE	MCC	MOTOR CONTROL CENTER
AT	AMPERE TRIP	MCM	CIRCULAR MILS. THOUSANDS
ANN	ANNUNCIATOR	MECH	MECHANICAL
APPROX	APPROXIMATE	MFG	MANUFACTURER
ARCH	ARCHITECT	MGAP	MEAN LUGS ONLY
ATS	AUTOMATIC TRANSFER SWITCH	MLO	MAIN LUGS ONLY
AWG	AMERICAN WIRE GAUGE	MTD	MOUNTING
BLDG	BUILDING	MTG	MOUNTING
BSMT	BASEMENT	NCS	NATIONAL ELECTRICAL CODE
C	CONDUIT	NIC	NOT TO SCALE
CAB	CABINET	PNL	PANEL
CB	CIRCUIT BREAKER	PH	PHASE
CKT	CIRCUIT	P	POLE
CLG	CEILING	PTB	PROVISIONS FOR BREAKER
CL	CENTER LINE	PA	PUBLIC ADDRESS
CT	CURRENT TRANSFORMER	REC	RECEPTACLE
CU	COPPER	REF	REFRIGERATOR
DISC	DISCONNECT	REFRG	REFRIGERATOR
DN	DOWN	REQD	REQUIRED
DWG	DRAWING	SN	SOLID NEUTRAL
EA	EACH	SPKR	SPEAKER
EDF	ELECTRIC DRINKING FOUNTAIN	SPEC	SPECIFICATION
EE	EXHAUST FAN	SWBD	SWITCHBOARD
ELEV	ELEVATOR	SWGR	SWITCHGEAR
EXP	EXPLOSION-PROOF	TEL	TELEPHONE
EQT	EQUIPMENT	TB	TELEPHONE TERMINAL BOARD
ETR	EXISTING TO REMAIN	TV	TELEVISION
EXTG	EXTINGUISHING	TVSS	TRANSIENT VOLT. SURGE SUPPRESSOR
FA	FIRE ALARM	TP	TYPICAL
FACP	FIRE ALARM CONTROL PANEL	UC	UNIT COUNTER
FCU	FAN COIL UNIT	UH	UNIT HEATER
FLA	FULL LOAD AMPS	V	VOLT
FLL	FLOOR	VA	VOLTA-AMPERE
GFI	GROUND FAULT INTERRUPTER	W	WATT
GND	GROUND	WH	WATER HEATER
HTR	HEATER	WP	WEATHER-PROOF
HIT	HEIGHT	W/	WITH
HP	HORSE POWER	W/O	WITHOUT
HW	HOT WATER	XTMR	TRANSFORMER
HWC	HOT WATER CIRCULATING	XFR	TRANSFER
INCAND	INCANDESCENT		

[illegible]

INFECTION CONTROL NOTES

[illegible]

DRAWING INDEX

DRAWING INDEX	
SHEET NO.	SHEET TITLE
E000	ELECTRICAL LEGENDS, INDEX, NOTES AND SCHEDULES
E101	PARTIAL BASEMENT ELECTRICAL DEMOLITION PLAN
E201	PARTIAL BASEMENT ELECTRICAL PLAN
E601	ELECTRICAL ONE-LINE DIAGRAM
E801	ELECTRICAL PANEL SCHEDULES

ELECTRICAL GENERAL NOTES

1. DRAWINGS, SCHEMATIC IN NATURE, AND MAY NOT BE EXACTLY EQUIVALENT TO CONSTRUCTION DOCUMENTS, SHALL BE COORDINATING EXACT ROUTING OF ALL SERVICES TO THE EQUIPMENT, INCLUDING, BUT NOT LIMITED TO, ALL OTHER TRADES.
2. VENERY, GREENING, TAPES, AND ARCHITECT PROPOSED, SHALL BE COORDINATING WITH ALL OTHER TRADES.
3. ALL CIRCUITS SHALL INCLUDE A GREEN GROUND CONDUCTOR SIZED IN ACCORDANCE WITH NEC SECTION 250, OR LARGER IF NOTED.
4. ALL PENETRATIONS OF FIRE RATED PARTITIONS DUE TO THE INSTALLATION OF ELECTRICAL SYSTEMS SHALL BE SEALED TO MAINTAIN THE FIRE RATING OF THE WALL.
5. WORK SHALL BE IN ACCORDANCE WITH THE NATIONAL ELECTRICAL CODE, THE AUTHORITY HAVING JURISDICTION, AND VA SPECIFICATIONS.
6. COORDINATE LOCATIONS OF EQUIPMENT AND DEVICES WITH ARCHITECT PRIOR TO ROUGH-IN. COORDINATE ROUTING OF FACEWAYS WITH ARCHITECT PRIOR TO ROUGH-IN.
7. REFER TO ARCHITECTURAL PLANS FOR PHASING OF CONSTRUCTION.
8. REFER TO ARCHITECTURAL PLANS FOR INFECTION CONTROL ASSESSMENT AREAS.

SPS SECURITY REQUIREMENTS

1. ACCESS TO SP5/SP9 UNIT SHALL BE THROUGH SECURED ENTRANCE ANTE-ROOM FROM THE NORTH CORRIDOR, WITH STAFF NOTIFICATION AND APPROVAL.
2. CONTRACTORS SHALL BE FULLY GOWNED WITH PROTECTIVE DISPOSABLE GLOVES, HAIR AND BEARD COVERS, AND SHOE COVERS WHILE MOVING THROUGH THE SP5/SP9 DEPARTMENT. UNTIL THE CONSTRUCTION BARRIER PUT ON AGAIN SHALL BE REMOVED WHEN ENTERING THE CONSTRUCTION BARRIER. PROTECTIVE WEAR SHALL BE REMOVED WHEN EXITING THE GENERAL HOSPITAL GOWNING SHALE AND THE DEPARTMENT AND ENTERING THE ANTE-ROOM ENTERING AND EXITING THE PLACE IN THE DEPARTMENT ANTE-ROOM(S) UPON ENTERING AND EXITING THE DEPARTMENT.
3. WORKERS WORKING EITHER IN THE SUBBASEMENT OR IN ROOM BA 113, SP5, DECONTAMINATION CANNOT GO DIRECTLY TO ROOM WA 110. SP5 PREPARATION, THEY MUST REMOVE ANY GOWN UP PPE (DECON) OR WPE GOWN CLOTHING AND BOOTS (SUBBASEMENT), BEFORE GOING TO THE SP5 PREP ANTE-ROOM (B) FOR STAFFED GOWN UP PPE.

PENETRATIONS

1. X-RAY SLAB AT LOCATIONS OF ALL NEW FLOOR PENETRATIONS PRIOR TO CORE DRILLING, AND CUTTING REPAIRS AND PENETRATIONS ARE FLOWED THROUGH THE EXISTING THICKENED MATTERS LOCATED ABOVE THE THICKENED SLAB SHALL BE CRISTED ABOVE FLOOR IN WALL SPACE OR BELOW CASTEROCK TO AVOID STRUCTURAL SLAB PENETRATION.
2. ALL PENETRATIONS MADE IN FLOORS, CEILINGS, PRE-CASTED PARTITIONS, PARTITIONS, ETC., CREATED FOR THE PURPOSE OF INSTALLING REINFORCED PIPE, CONDUIT, CABLE, OR DUCTWORK, OTHER MODIFICATIONS INCLUDING INCLUDING DAMAGE, OR THE REMOVAL OF SUCH ITEMS WILL BE REPAIRED/SEALED WITH THE STOPPING MATERIAL UPON COMPLETION OF THE WORK AND DOCUMENTED AS REQUIRED. THE STOPPING MATERIAL MUST MEET NFPA 110 (2012) 6.3.5 AND 6.3.6 REQUIREMENTS. THE STOPPING MATERIAL SHALL BE APPLIED TO THE SURFACE OF THE PENETRATION AND TO ALL EXPOSED SLAB AND CONCRETE SURFACES. A GENERAL AND HORIZONTAL PENETRATIONS AND TO ALL EXPOSED SLAB AND CONCRETE SURFACES. A GENERAL AND HORIZONTAL SURFACE IS RESTORED. TEMPORARY METHODS OF SEALING SHALL BE USED IF WORK CANNOT BE COMPLETED WITHIN 24 HOURS. THIS POLICY APPLIES TO ALL VERTICAL AND HORIZONTAL PENETRATIONS AND TO ALL EXPOSED SLAB AND CONCRETE SURFACES. A GENERAL AND HORIZONTAL UPON COMPLETION OF THE PENETRATION REPAIR, A VISUAL INSPECTION FOR APPROVAL MUST BE REQUESTED FROM THE CORP AND SAFETY OFFICE.

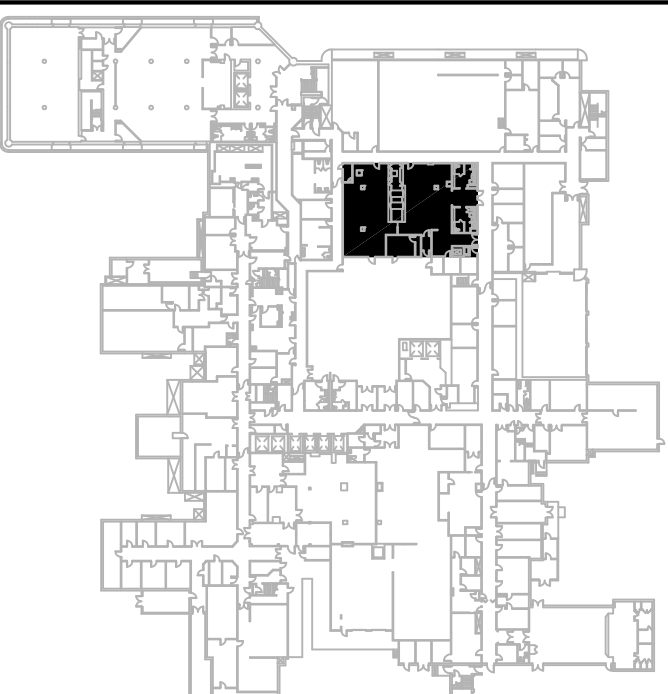
CONSTRUCTION PHASING AND SCHEDULING

- CONSTRUCTION SHALL BE COMPLETED IN PHASES TO ALLOW FOR UNINTERRUPTED USE OF HOSPITAL FACILITIES. THE CONTRACTOR SHALL SUBMIT DETAILED SCHEDULING AND CONSTRUCTION PLANS TO THE ARCHITECTURAL PLANS FOR SEQUENCE OF CONSTRUCTION AND PHASING REQUIREMENTS.
2. SCHEDULE CONSTRUCTION, INCLUDING THE DATE, TIME, AND DURATION OF DOWNTIME OF EFFECTED EQUIPMENT, SHALL BE ADVISORIED TO THE HOSPITAL AND ADVISORIED EFFECTED AREAS WITH THE CONTRACTOR. NO EQUIPMENT OR SERVICES SHALL BE DISCONNECTED OR RENEWED NON-FUNCTIONAL WITHOUT SCHEDULING AND PRIOR APPROVAL OF THE CONTRACTOR.
3. SCHEDULE WORK AFTER HOURS AND DURING THE WEEKEND TO MINIMIZE ELECTRICAL OUTAGES DURING OPERATIONAL TIME OF THE SPSS AND ADJOINING AREAS.

GENERAL NOTES

DEMOLITION LEGEND	
SYMBOL	DESCRIPTION
—	EXISTING TO REMAIN
—	EXISTING TO BE REMOVED
●	DEMO TO THIS POINT

KEY PLAN



**Office of
Construction
and Facilities
Management**

