

T:\Team53\2012\12530330 Denver VA- SPS Piping\Constructs\Elec\VAMC\_E101.dwg 2-11-13 04:52:54 PM tharvey

Revisions:	Date

CONSTRUCTION DOCUMENTS  
FULLY SPRINKLERED

Smith  
Seckman  
Reich, Inc.  
8055 E. Teller Avenue, Suite 1100  
Denver, Colorado 80237  
Phone: (303) 779-1222  
Fax: (303) 779-1224  
www.ssr-inc.com  
SSR JOB #: 12530330

EFT  
ARCHITECTS

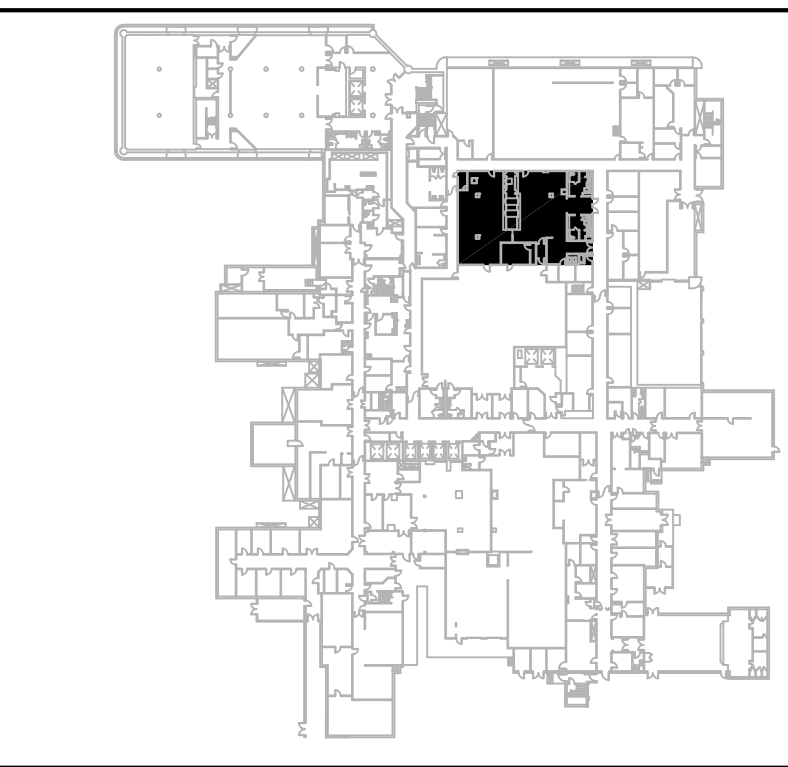
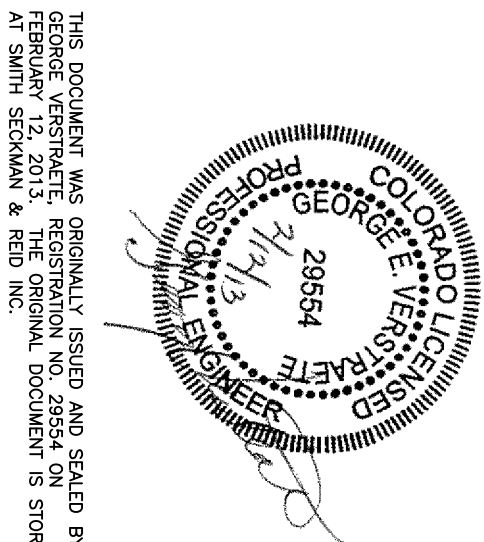
265 EAST 100 SOUTH SUITE 350  
SALT LAKE CITY, UTAH 84111-1604  
801.521.8564 WWW.EFTARCH.COM

E1

ENLARGED ELECTRICAL DEMOLITION PLAN  
1/4"=1'-0"

DEPARTMENT OF VETERANS AFFAIRS  
MEDICAL CENTER  
1056 Clement Street  
Denver, Colorado, 80220

Drawing Title	Project Title	Project Number	Office of Construction and Facilities Management
PARTIAL BASEMENT ELECTRICAL DEMOLITION PLAN - SPS	SPS PIPING AND EQUIPMENT SITE PREP	554-12810	
Approved: Project Director	Location: DENVER VA MEDICAL CENTER	Building Number: BUILDING 1	
Date: 12 FEB. 2013	Checked: GEV	Dwg. 16 of 19	



ONE HOUR FIRE WALL  
TWO HOUR FIRE WALL  
SMOKE ZONE

SYMBOL	DESCRIPTION
	EXISTING TO REMAIN
	EXISTING TO BE REMOVED
	DEMO TO THIS POINT

DEMOLITION LEGEND	
SYMBOL	DESCRIPTION
	EXISTING TO REMAIN
	EXISTING TO BE REMOVED
	DEMO TO THIS POINT

GENERAL NOTES

① DISCONNECT AND REMOVE SERVICE TO EXISTING CABINET WASHER. REMOVE CONDUCTORS AND CONDUIT BACK TO PANEL LIF. LABEL CIRCUIT BREAKER AS SPARE.

② STERILIZER, RELOCATE CONDUIT PENETRATION AS REQUIRED TO DISCONNECT SWITCH IN NEW CHASE.

③ DISCONNECT AND REMOVE EXISTING WALL TRANSFORMER. REMOVE CONDUCTORS AND CONDUIT BACK TO BUS DUCT IN ROOM BA-108. COORDINATE TRANSFORMER AND FEEDER TO MINIMIZE DOWN TIME OF PANEL LLG.

④ REMOVE EXISTING LUMINAIRE. RELOCATE EXISTING CIRCUITS. FOR REUSE WITH NEW LUMINAIRES.

⑤ REMOVE EXISTING WALL MOUNTED LUMINAIRE. RELOCATE EXISTING CIRCUITS. FOR REUSE WITH NEW LUMINAIRES.

⑥ RELOCATE EXISTING J-BOX AND CONDUIT. RELOCATE J-BOX AND CONDUIT TO NEW LOCATION. MAINTAIN FOR RE-INSTALLATION.

⑦ COORDINATE WITH STERIS. EQUIPMENT INSTALLER AND REMOVE SURFACE MOUNTED FACEWAY ASSOCIATED WITH EXISTING CABT WASHER.

⑧ REMOVE EXISTING RECEPTACLES ABOVE BACKSPLASH OF EXISTING SINK. ENSURE CONTINUITY OF ELECTRICAL PATH. PROVIDE NEW STAINLESS STEEL PLATE WITH GASKET.