

T:\Team53\2012\12530330 Denver VA- SPS Piping\Constructs\Elec\VAMC\_E201.dwg 2-11-13 04:57:54 PM tharvey

Revisions:	Date

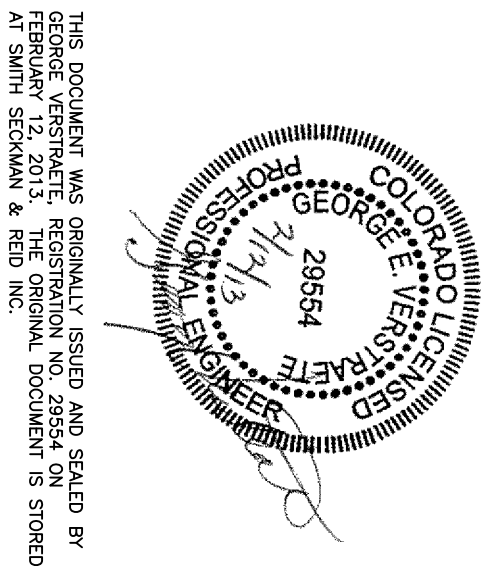
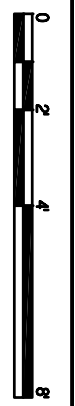
CONSTRUCTION DOCUMENTS  
FULLY SPRINKLERED

Smith  
Seckman  
Kitchell, Inc.  
8055 E. Tulare Avenue, Suite 1100  
Denver, Colorado 80237  
FAX (303) 779-1722  
WWW.SSK-KIC.COM  
SSK JOB #: 12530330

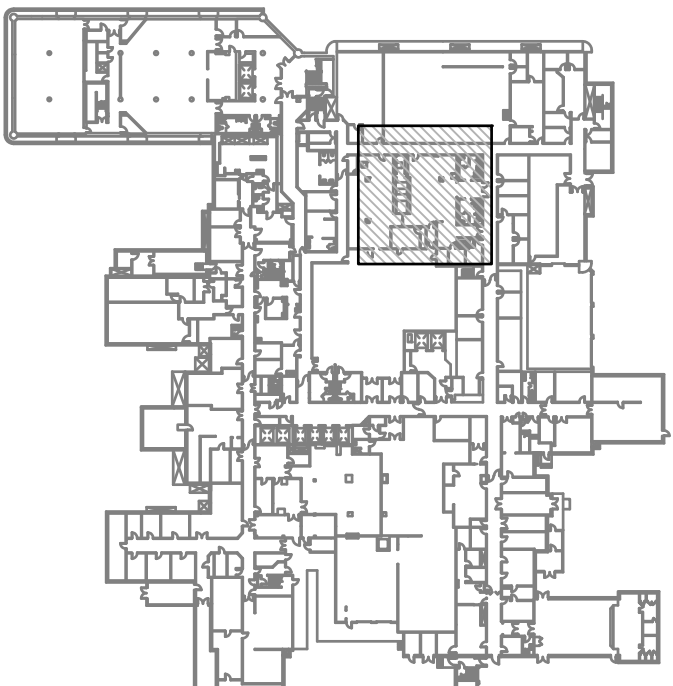
EFT  
ARCHITECTS  
265 EAST 100 SOUTH SUITE 350  
SALT LAKE CITY, UTAH 84111-1604  
801.521.8564 WWW.EFTARCH.COM

DEPARTMENT OF VETERANS AFFAIRS  
MEDICAL CENTER  
1056 Clement Street  
Denver, Colorado, 80220

E1 ELECTRICAL PLAN  
1/4"=1'-0"



THIS DOCUMENT WAS PREPARED, DESIGNED AND CALLED BY  
CONSTRUCTION DOCUMENTS, INC. AND SHALL BE  
THE PROPERTY OF CONSTRUCTION DOCUMENTS, INC. IT IS TO BE  
RETURNED TO CONSTRUCTION DOCUMENTS, INC. IF NOT  
RETURNED BY 12/31/2013. NO OTHER REPRODUCTION IS ALLOWED.



KEY PLAN

ONE HOUR FIRE WALL - - - - -  
TWO HOUR FIRE WALL - - - - -  
SMOKE ZONE

RENOVATION LEGEND

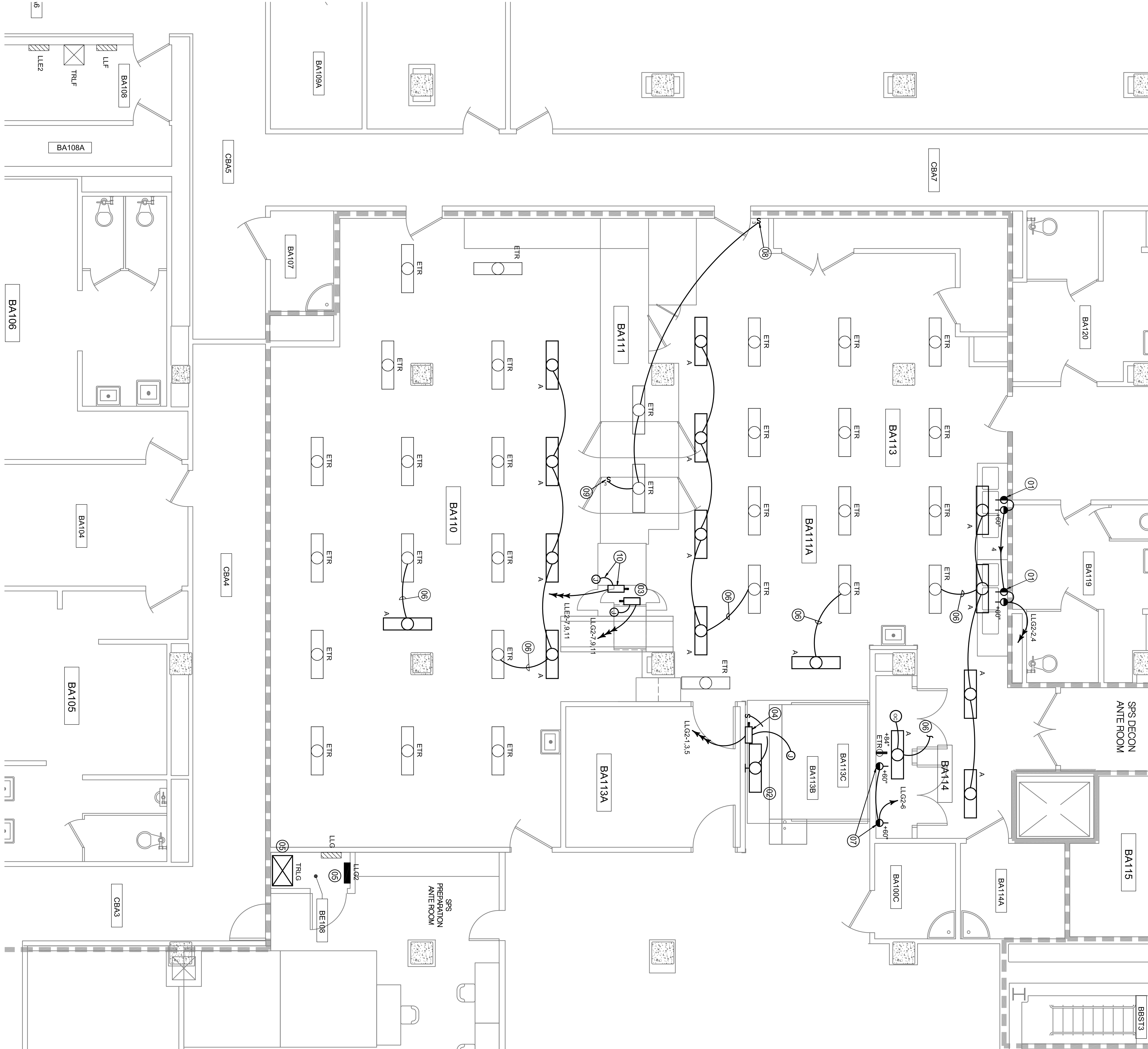
NEW CONSTRUCTION  
EXISTING TO REMAIN  
CONNECT TO EXISTING  
AT THIS POINT

GENERAL NOTES

1. LABEL ALL NEW WIRING DEVICES AND  
INDICATING SOURCE PANEL AND CIRCUIT  
NUMBER. LABEL ALL EXISTING BUILDING  
STANDARD LABELS.

- LOCATE RECEPTACLES FOR SINK TO  
CONVENIENTLY CONNECT THE CORD AND  
PLUG FROM THE SINK ADJUSTMENT MOTOR.  
MOTOR RECEPTACLE TO CORD AND PLUG  
MOTOR RECEPTACLE TO CORD AND PLUG  
STEEL DEVICE COVERS. VERIFY EXACT  
LOCATION AND REQUIREMENTS WITH  
EQUIPMENT SUPPLIER PRIOR TO ROUGH-IN.  
REINSTALL LIGHT FIXTURE AND SWITCH  
FROM EXISTING CART WASHER ENCLOSURE.  
RECONNECT TO ORIGINAL CIRCUIT.
- NEW STERILIZER - 36.0 FLA. 208V, 3PH.  
PROVIDE 60A/3P HEAVY DUTY DISCONNECT  
SWITCH WITH 60A/3P FUSES. COORDINATE  
SUPPLIERS. HOMERUN TO RM. #10 0117C.
- NEW CART WASHER - 25.5 FLA. 208V, 3PH.  
PROVIDE 60A/3P HEAVY DUTY DISCONNECT  
SWITCH WITH 60A/3P FUSES. COORDINATE  
SUPPLIERS. HOMERUN TO RM. #10 0117C.
- RECONNECT PANEL LLG2.
- CONNECT TO EXISTING 277V LIGHTING  
CIRCUIT SERVING AREA. COORDINATE LIGHT  
FIXTURE LOCATION WITH EXISTING CEILING  
ACCESS DOORS AND OTHER OBSTRUCTIONS.  
DO NOT COORDINATE WITH EXISTING CEILING  
OR ABOVE CEILING OBSTRUCTIONS. PROPOSE  
NEW LOCATIONS AND/OR ROTATIONS OF THE  
LIGHT FIXTURES TO THE DOWN-PHASE TO  
ROUGH-IN.
- PROVIDE RECEPTACLE FOR CONNECTION TO  
VERIFY EXACT LOCATION AND REQUIREMENTS  
WITH EQUIPMENT SUPPLIER PRIOR TO  
ROUGH-IN.
- REPLACE EXISTING SPST LIGHT SWITCH WITH  
NEW 3-WAY SWITCH AND WIRING.
- PROVIDE NEW 3-WAY SWITCH. COORDINATE  
MOUNTING LOCATION IN EQUIPMENT  
ENCLOSURE IN FIELD WITH OWNER.
- REINSTALL EXISTING DISCONNECT TO  
EXISTING STERILIZER. RECONNECT TO  
EXISTING STERILIZER.

KEY NOTES



Drawing Title  
PARTIAL BASEMENT ELECTRICAL  
PLAN - SPS

Approved: Project Director

Project Title	Project Number
SPS PIPING AND EQUIPMENT SITE PREP	SSK-12810
Location DENVER VA MEDICAL CENTER	Building Number BUILDING 1
Date 12 FEB. 2013	Drawing Number E201
Checked GEV	Dwg. 17 of 19
Drawn TAH	

Office of  
Construction  
and Facilities  
Management  
Department of  
Veterans Affairs