






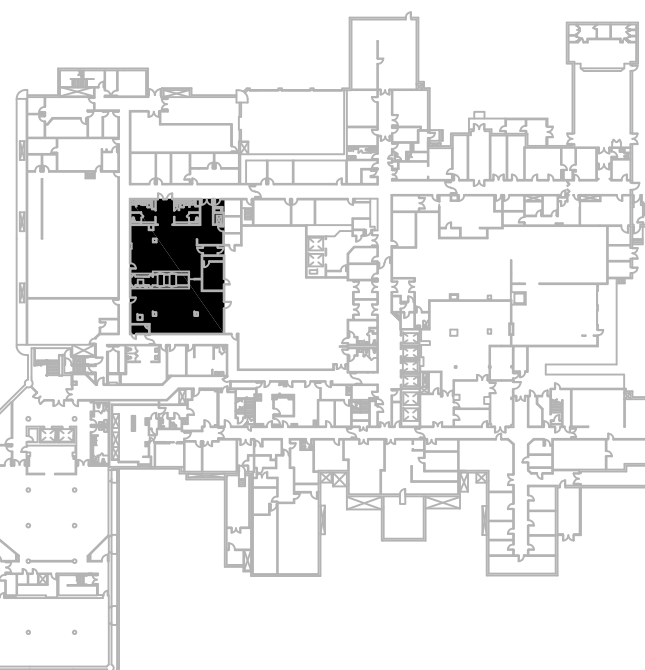
- ## KEY NOTES
- 01 RELOCATE EXISTING SUPPLY DIFFUSER AND ASSOCIATED DUCTWORK TO NEW LOCATION SHOWN ON PLAN. REBALANCE TO EXISTING CFM.
 - 02 MODIFY EXISTING EXHAUST CONNECTION TO NEW CART WASHER PER MANUFACTURER REQUIREMENTS.
 - 03 RELOCATE EXISTING EXHAUST DUCT AND ASSOCIATED DUCTWORK TO NEW LOCATION SHOWN ON PLAN. RECONNECT EXISTING DUCTWORK TO EXISTING MAIN. REBALANCE TO EXISTING CFM.
 - 04 EXTEND EXISTING HOOD TO COVER NEW W/D FRONT.

- # GENERAL NOTES
1. PROVIDE ACCESS PANEL AS REQUIRE FOR HVAC MANUAL DAMPERS ACCESS.
 2. ALL PENETRATIONS MADE IN FLOORS, CEILINGS, FIRE/SMOKE BARRIERS, ETC. SHALL BE DONE FOR THE PURPOSE OF INSTALLING/REMOVING PIPE, CONDUIT, CABLE, OR DUCTWORK, OTHER MODIFICATIONS INCLUDING INCIDENTAL DAMAGE, OR THE REMOVAL OF SUCH ITEMS, WILL BE REPAIRABLE WITH THE SAME STOPPING MATERIAL UPON COMPLETION OF THE WORK AND SHALL BE SUBJECT TO THE FIRE STOPPING MATERIAL MUST MEET NFPA STANDARD 963.5 AND MEET THE ORIGINAL INTENDS AND RATING FOR THE PENETRATION. THE FOLLOWING ARE TEMPORARY METHODS OF SEALING SHALL BE USED IF WORK CANNOT BE COMPLETED WITHIN 24 HOURS. THIS POLICY APPLIES TO ALL VERTICAL AND HORIZONTAL PENETRATIONS AND TO ALL ECHO'S STAFF AND CONTRACTORS. A PENETRATION PERMIT WILL BE OBTAINED 24 HOURS BEFORE ANY PENETRATIONS. SAFETY OFFICE, PRIOR TO THE WORK. PENETRATION REPORT OF ANY INSPECTION FOR APPROVAL MUST BE COMPLETED BY THE COTR AND SAFETY OFFICE.

DEMOLITION LEGEND	
SYMBOL	DESCRIPTION
	EXISTING TO REMAIN
	NEW CONSTRUCTION
	DEMOLITION
	CONNECT TO EXISTING
	DEMO TO THIS POINT

ONE HOUR FIRE WALL
TWO HOUR FIRE WALL
SMOKE ZONE

KEY PLAN



THIS DOCUMENT WAS ORIGINALLY ISSUED AND SEALED BY
LEE NORDHOLM, REGISTRATION NO. 45671 ON FEBRUARY
12, 2013. THE ORIGINAL DOCUMENT IS STORED AT SMITH
SECKMAN & REID INC.

[illegible]