

three inches = one foot  
one and one half inches = one foot  
one inch = one foot  
three quarters inch = one foot  
one half inch = one foot  
three eighths inch = one foot  
one quarter inch = one foot  
one eighth inch = one foot

A

B

C

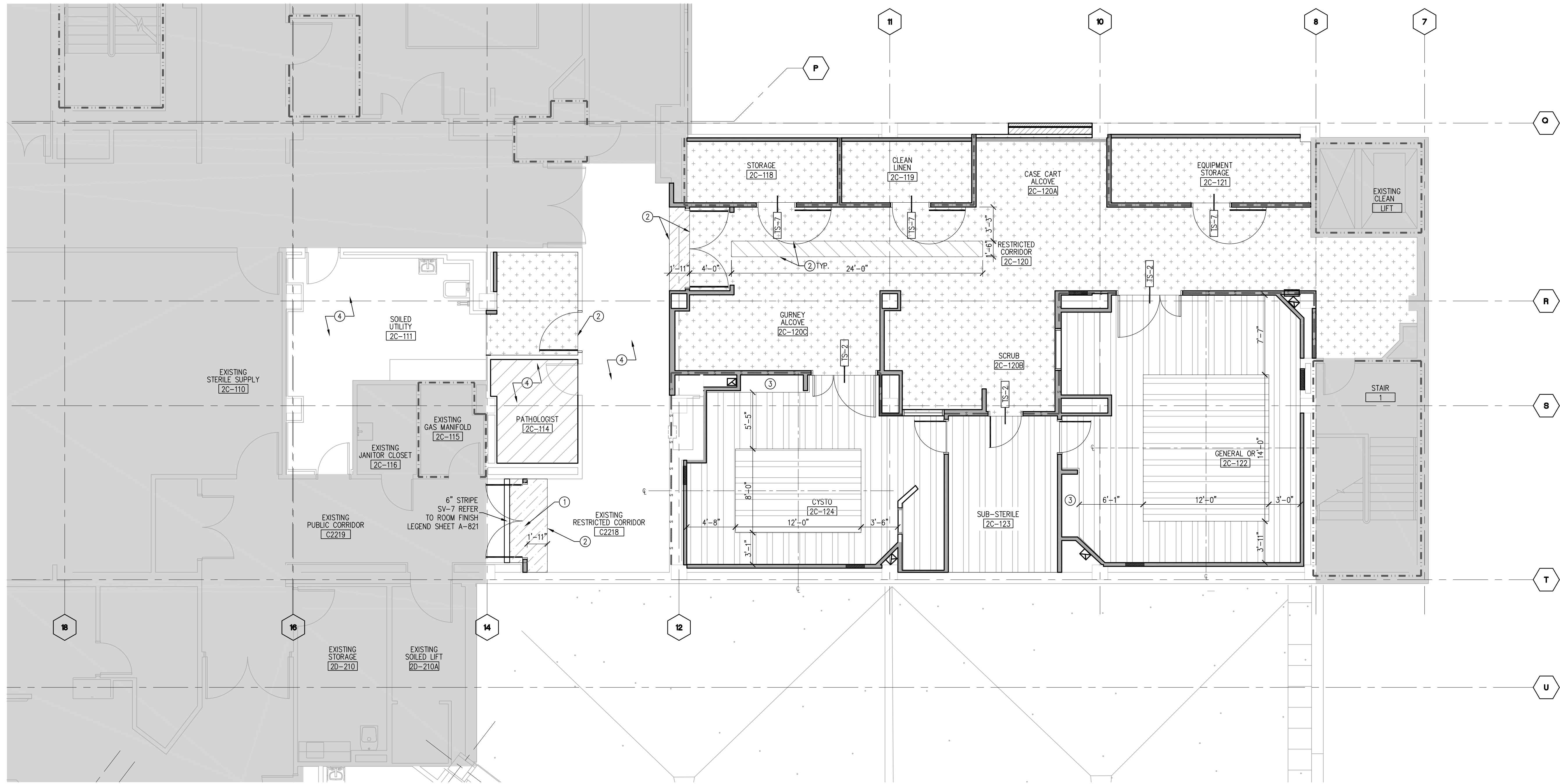
D

E

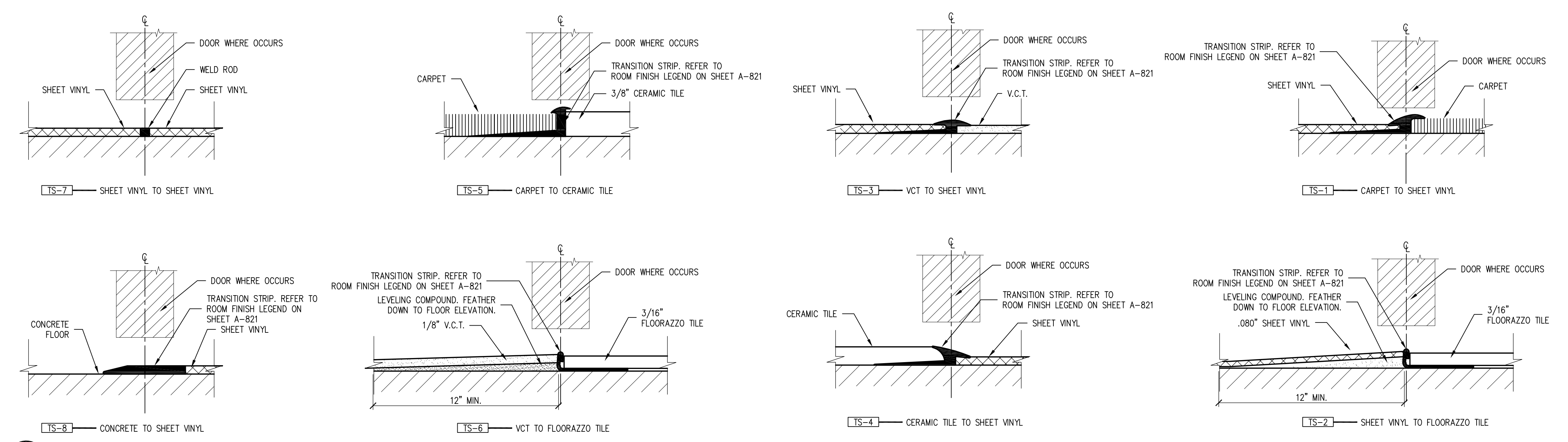
F

16

K:\CCG PROJECTS\2012\12-119 - VA Lovell FHCC - OR-GI-ON Renovation\400 - Drawings\00-PHASE\12-119-FINISH.dwg 5-17-13 03:12:58 PM KRichardson



1 PARTIAL SECOND FLOOR ROOM FINISH PLAN  
3/16"=1'-0"



2 TRANSITION DETAILS  
NOT TO SCALE

FINISH PLAN GENERAL NOTES

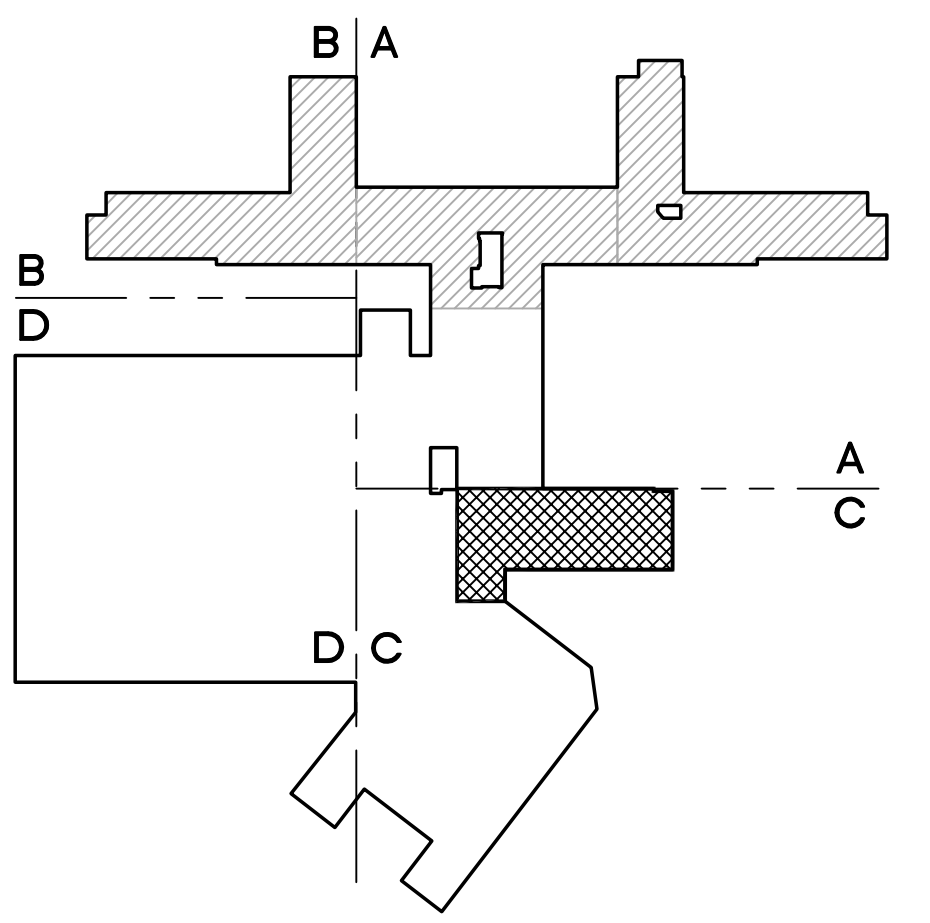
- 1. ALL DETAIL REFERENCES REFER TO THE DETAIL SHEET IN THE CORRESPONDING DEPARTMENT SECTION THAT IS SHOWN ON THE PLAN (OR, ON, GI)
- 2. REFER TO SHEETS A-701 AND A-702 FOR ROOM ELEVATIONS.
- 3. THIS SHEET CALLS OUT ONLY ACCENT WALL FINISHES. REFER TO ROOM FINISH LEGEND, SHEET A-821, FOR COMPLETE LISTING OF FINISHES.
- 4. SEE ELEVATION SHEETS A-721 FOR ACCENT WALL FINISHES.

FINISH PLAN KEY

NO HATCH	SV-1	SV-2	SV-3
SV-4	SV-5	SV-6	
VCT-1	VCT-2	T-1	
T-2	CT-1	CPT-1	
TS-# TRANSITION TAG REFER TO ROOM FINISH LEGEND. SEE SHEET A-821		XX FINISH TAG REFER TO ROOM FINISH LEGEND. SEE SHEET A-821	

FINISH PLAN KEY NOTES - SURGERY

- 1 CARE TO BE TAKEN WHEN DOORS ARE INSTALLED TO NOT DAMAGE EXISTING FLOORING, WALL OR CEILING FINISHES. IF DAMAGE OCCURS REPLACE WITH SV-5 AS NOTED.
- 2 ROOMS WITH SHEET VINYL FLOORING SV-4, SV-5, SV-6 TO USE THE FOLLOWING SEAM WELDS:  
SV-4-WM311-NATURAL WHITE, SV-5-WM342-TERRA COTTA,SV-6-WM333-TEA GREEN.
- 3 NO FLOOR FINISH: BUILT IN CABINET. REFER TO ELEVATIONS SHEET A-701 AND MILLWORK DETAILS SHEET A-721.
- 4 EXISTING FLOOR FINISH TO REMAIN UNLESS OTHERWISE NOTED.



100% ISSUE FOR BID	04-16-2013
100% CD Review	03-28-2013
99% CD Internal QA/QC	03-20-2013
90% CD Submission	02-08-2013
QA/QC Review	01-29-2013
50% Life Safety Review Package	01-07-2013
50% Finish Review Package	01-07-2013
50% CD Submission	12-28-2012
Design Development	11-08-2012
Revisions	Date

ARCHITECT + ENGINEERS:

**Bancroft**

700 Nicholas Blvd, Suite 403  
Ely Grove Village, IL 60007  
T: 847.952.9362 F: 847.952.9403

CONSULTANT:

**LEGATARCHITECTS**

WILKINSON CRYSTAL LAKE OAK BROOK CHICAGO  
24 NORTH CHAPEL STREET  
WILKINSON, IL 60085  
PH: 847.662.3535 FX: 847.249.0398 WWW.LEGAT.COM

Drawing Title  
PARTIAL SECOND FLOOR  
ROOM FINISH PLAN

Approved: Project Director  
-  
VAPACHS PLANNING AND ENGINEERING

Project Title LOVELL FHCC OR-GI-ON RENOVATIONS SECOND AND THIRD FLOORS	Project Number #556-12-127	Office of Construction and Facilities Management  Department of Veterans Affairs
Location NORTH CHICAGO, IL	Building Number 133	
Date 05-17-2013	Checked PB	Drawn SD
Drawing Number A-OR-801		