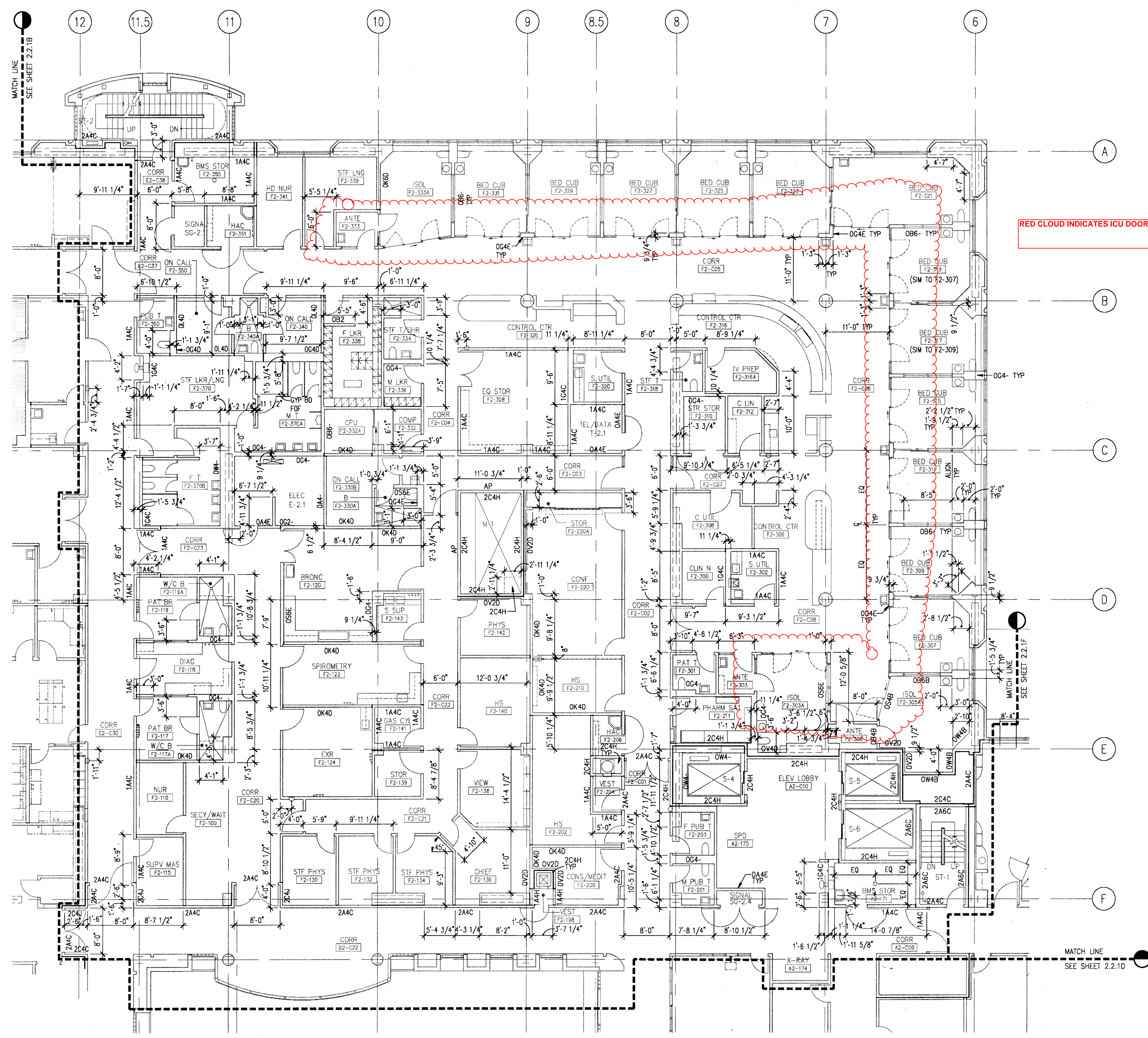


three inches = one foot  
one and one-half inches = one foot  
one inch = one foot  
three-quarters inch = one foot  
one-half inch = one foot  
three-eighths inch = one foot  
one-quarter inch = one foot  
one-eighth inch = one foot



RED CLOUD INDICATES ICU DOORS

NOTES:  
1. SEE GENERAL ARCHITECTURAL NOTES, DWG X0.3.0.

NOTE:  
FOR BASIC FIRE PROTECTION DIAGRAM, SEE FIRE PROTECTION PLANS, FP PREFIX DRAWINGS, FOR SPECIFIC PARTITION TYPES SEE ARCHITECTURAL DIMENSION PLANS.



*Thomas C. Aglin*  
Western Team Director

Approved Project Director

**ARCHITECT**  
The Ratcliff Architects  
5056 Doyle Street  
Emeryville, CA 94608  
P.O. Box 1022  
Berkeley, CA 94701  
(510) 652-1972

**ASSOCIATE ARCHITECT**  
Stone, Marracini and Patterson  
One Market Plaza  
Spear Street Tower, Suite 400  
San Francisco, CA 94105  
(415) 227-0100

**CONSULTANTS**  
**Structural Engineers**  
H.J. Degenkolb Associates  
**Mechanical Engineers**  
Capital Engineering Consultants, Inc.  
**Electrical Engineers**  
The Engineering Enterprise

**Cost Estimator**  
Adamson Associates

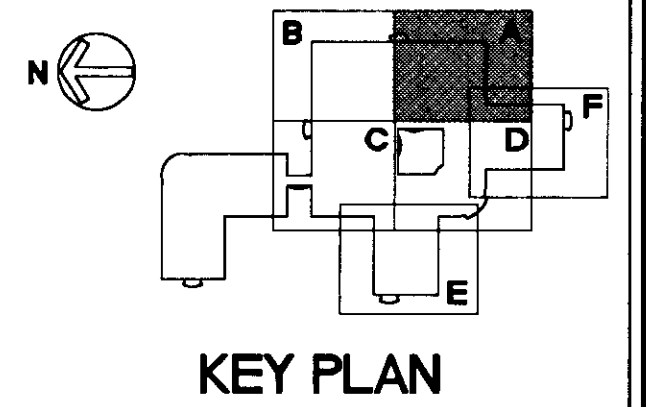
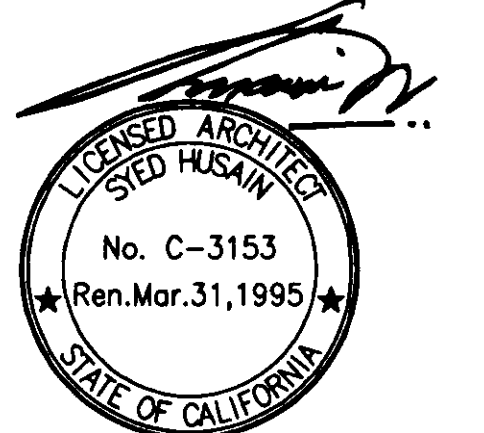
**Landscape Design/**  
Land Planning  
Omni Lang Associates, Inc.

**Civil Engineer**  
Sandra Humber Jones

**Elevator Consultant**  
Sykes and Hennessy

**Fire Protection**  
Rolf Jensen and Associates

**Food Service Consultant**  
Cini-Little International, Inc.



Revisions	Date
-----------	------

Location  
VA Medical Center  
Palo Alto, CA

Project Title  
REPLACE CLINICAL/  
BED TOWER FOR  
SEISMIC CORRECTIONS

FULLY SPRINKLERED

TRA Project No. 93007	Checked	Drawn
--------------------------	---------	-------

Drawing Title  
SECOND FLOOR  
DIMENSION PLAN  
AREA A

Scale 1/8" = 1'-0"

VA Project No.  
640-042G

Date  
2 MAY 94

Drawing No.  
2.2.1A