

DEPARTMENT OF
VETERANS AFFAIRS

VA MEDICAL HEALTH CARE SYSTEM
FORT SNELLING VA MEDICAL CENTER

LEAD ABATEMENT REMEDIATION PLAN

BUILDING 222

VA PROJECT NO: 618-12-303

DRAWING INDEX

<u>SHEET NO.</u>	<u>TITLE</u>	<u>SHEET NO.</u>
COVER SHEET		
1259.X001	COVER SHEET	1 OF 16
LEAD-BASED PAINT LOCATION PLANS		
1259.HL001	LOWER LEVEL FLOOR PLAN	2 OF 16
1259.HL002	LEVEL ONE FLOOR PLAN	3 OF 16
1259.HL003	LEVEL TWO FLOOR PLAN	4 OF 16
1259.HL004	LEVEL THREE FLOOR PLAN AND ROOF	5 OF 16
ARCHITECTURAL		
1259.AA001	LOWER LEVEL FLOOR PLAN	6 OF 16
1259.AA002	LEVEL ONE FLOOR PLAN	7 OF 16
1259.AA003	LEVEL TWO FLOOR PLAN	8 OF 16
1259.AA004	LEVEL THREE FLOOR PLAN AND ROOF	9 OF 16
1259.AA005	PHASING AND MOVE PLAN LOWER LEVEL	10 OF 16
1259.AA006	PHASING AND MOVE PLAN LEVEL ONE	11 OF 16
1259.AA007	PHASING AND MOVE PLAN LEVEL TWO	12 OF 16
1259.AA008	PHASING AND MOVE PLAN LEVEL THREE	13 OF 16
1259.AA009	PHASING AND MOVE PLAN LEVEL ONE CONTAINMENT	14 OF 16
1259.AA010	PHASING AND MOVE PLAN LEVEL ONE CONTAINMENT	15 OF 16
1259.AA011	PHASING AND MOVE PLAN TYPICAL CONTAINMENT	16 OF 16

ARCHITECTURE

ANDERSON ENGINEERING OF MINNESOTA, LLC
13605 1st AVENUE NORTH, SUITE 100
PLYMOUTH, MN 55441
(763) 412-4000 TEL
(763) 412-4090 FAX
WEB: www.ae-mn.com

HAZARDOUS MATERIALS

INSTITUTE FOR ENVIRONMENTAL ASSESSMENT
9201 WEST BROADWAY
BROOKLYN PARK, MN 55445
(763) 315-7900 TEL
(763) 315-7920 FAX

Dieter Hübner
MARCH 8, 2013

MARCH 8, 2013



MDH **LEAD**
Minnesota Department of Health
Project Designer

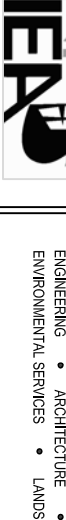
Licensed by:
State of Minnesota
Department of Health
License No. LD504
Expires 10/26/2013


Diedra Hudgens-Gey

Minneapolis, MN 55409

Paula Blumenthal
Director, Env. Health Div.

BD DOCUMENTS		03-08-2013	
No.	Revisions:	Date	


CONSULTANTS:	
	

ARCHITECT/ENGINEERS:	
 <p>ENGINEERING • ARCHITECTURE • LAND SURVEYING ENVIRONMENTAL SERVICES • LANDSCAPE ARCHITECTURE</p>	

Drawing Title COVER SHEET	
Approved: Project Director	

Project Title LEAD ABATEMENT REMEDIATION PLAN	
Location FORT SNELLING, MINNEAPOLIS, MN	
Date 03-08-2013	Checked PR
Drawing Number 1259.X001	
Dwg. 1 of 16	

Project Number 618-12-303	
Building Number 222	

Office of Construction and Facilities Management	
 <p>Minnesota Department of Transportation</p>	

LEAD PAINT ABATEMENT/REMEDICATION
ENTIRE SPACE

PHASE 4:
PURGE AREAS 6 & 7

PHASE 5:
MOVE REMAINDER OF AREA 6 TO AREA 7
REMEDiate AREA 6

PHASE 6:
MOVE AREA 7 TO AREA 6
REMEDiate AREA 7

PURGE PHASE:

- MOVE ITEMS TO BE DISPOSED OF/REMOVED FROM THE BUILDING TO LEVEL ONE AREA 1 AND 2 STAGING AREAS
- CONTAINMENT:
- STORAGE ITEMS AT PHASE 6 TO BE CLEANED IN CONTAINMENT AREA PRIOR TO MOVING INTO CLEAN AREA 6.
- ANY ITEMS UNABLE TO FIT IN SINGLE AREA NEED TO BE MOVED TO ANOTHER FLOOR AND MOVED BACK AT END OF PHASE 6.
- SEE SHEET 1259.AA011 FOR TYPICAL CONTAINMENT AREA DIAGRAM.

TRUE



PLAIN



NORTH

NORTH

No.	BID DOCUMENTS Revisions:	03-08-2013 Date

CONSULTANTS:



ARCHITECT/ENGINEERS:



ANDERSON
ENGINEERING

ENGINEERING • ARCHITECTURE • LAND SURVEYING
ENVIRONMENTAL SERVICES • LANDSCAPE ARCHITECTURE

Drawing Title

PHASING AND MOVE PLAN LOWER LEVEL

Approved: Project Director

Project Title

LEAD ABATEMENT REMEDIATION PLAN

Location

Fort Snell
Date

03-08-2013

Project Number
618-12-303

Building Number
222

Drawing Number

1259.AA005
Data 10 of 16

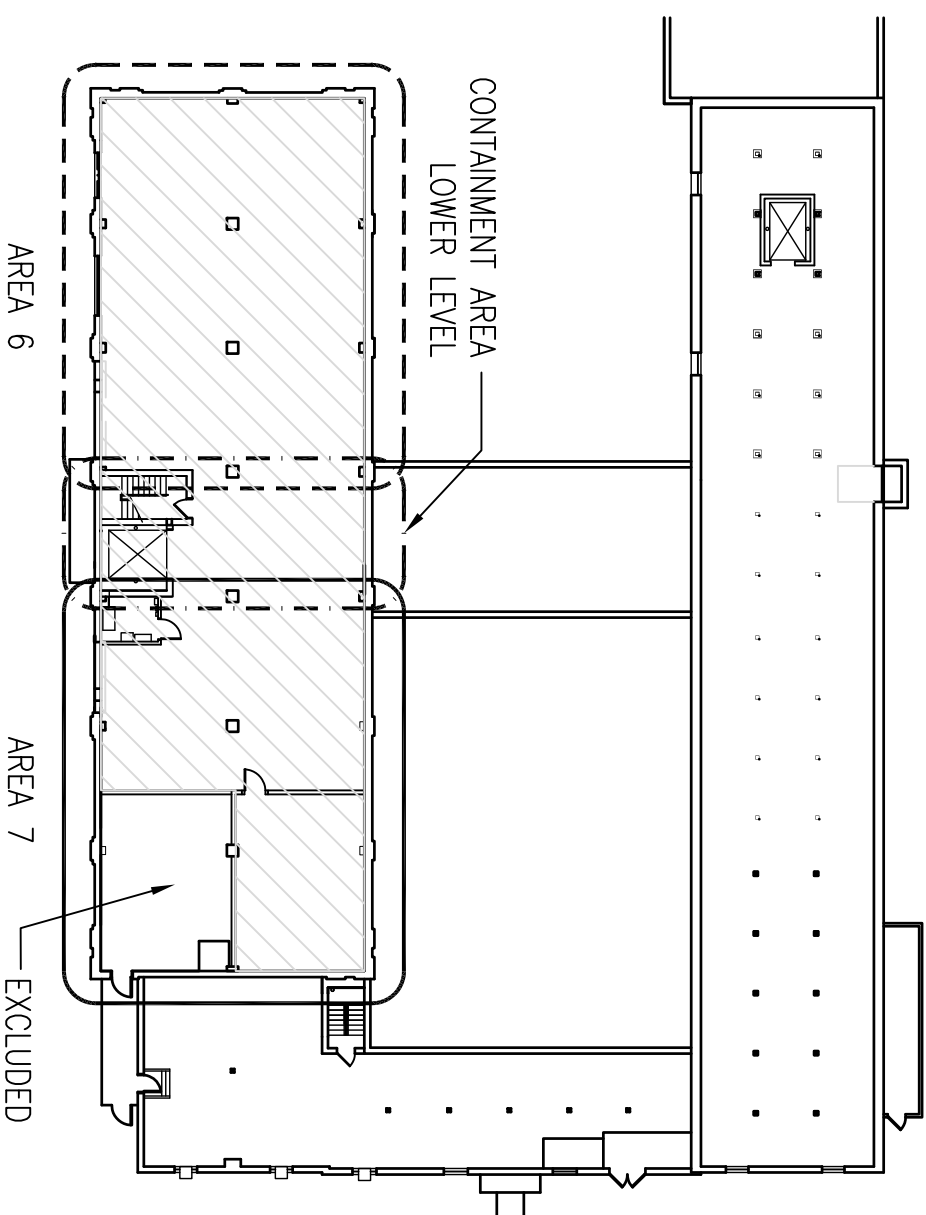
**Office of
Construction
and Facilities
Management**



PHASING AND MOVE PLAN LOWER LEVEL

1259.
AA005

SCALE: 1/32" = 1'-0"



LEAD PAINT ABATEMENT/REMEDICATION
ENTIRE SPACE

LEAD PAINT ABATEMENT/REMEDIATION GARAGE DOORS,
CLEAN ENTIRE SPACE

PHASE 1:

CLEAR AREAS FOR CONTAINMENT ENCLOSURE AT AREA 1 & 2
SET UP CONTAINMENT ENCLOSURES

PURGE REMAINDER OF AREAS 1 & 2

PHASE 2:

PURGE REMAINING ITEMS FROM LEVEL ONE IN THE FOLLOWING ORDER: AREA 4, AREA 5, AREA 3

PHASE 3:

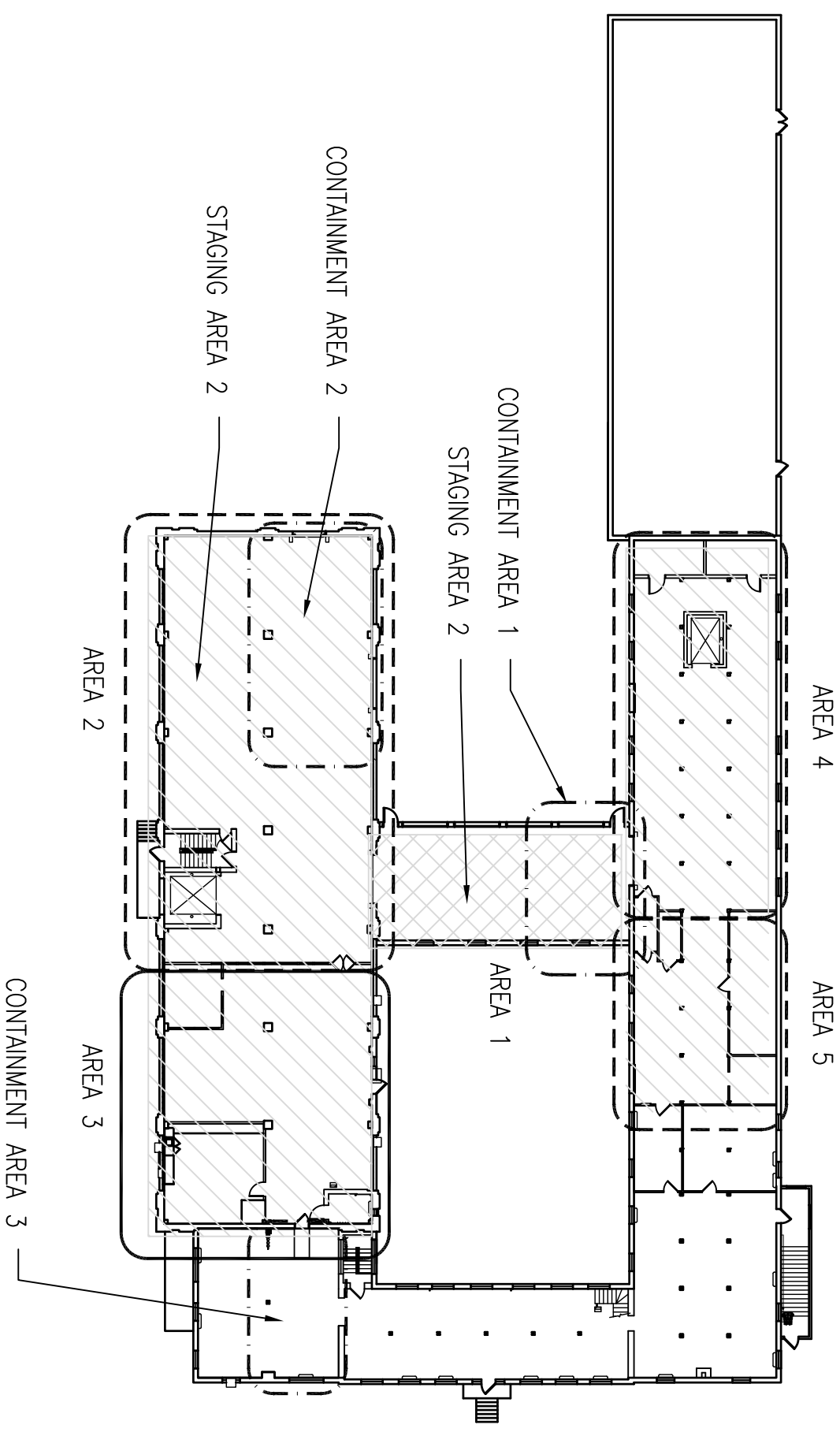
MOVE REMAINING ITEMS FROM AREA 4 & 5 TO AREA 2 & 3
REMEDiate AREAS 4 & 5
CLEAN AND MOVE REMAINING ITEMS BACK INTO AREA 4 & 5
AS NEEDED TO CLEAR AREA 1 & 2

PHASE 13:

WHEN ALL FLOORS HAVE BEEN PURGED, REMEDIATED AND CLEANED, FINISH BY CLEARING AREAS 2 AND 3, REMEDIATE AND CLEAN. CLEAN AREA 1 AT LAST STAGE.

PURGE PHASE:

- MOVE ITEMS TO BE DISPOSED OF/REMOVED FROM THE BUILDING TO CLEAR LEVEL ONE AREA 1 AND 2 STAGING AREAS FOR FUTURE FLOOR PURGES
- CONTAINMENT:
- STORAGE ITEMS TO BE CLEANED IN CONTAINMENT AREA PRIOR TO MOVING INTO CLEAN AREAS.
- ANY ITEMS UNABLE TO FIT IN SINGLE AREA NEED TO BE MOVED TO STORAGE OUTSIDE OF THE BUILDING.
- SEE SHEETS 1259.AA009 AND 1259.AA010 FOR CONTAINMENT AREA DIAGRAMS.



PHASING AND MOVE PLAN LEVEL ONE

SCALE: 1/32" = 1'-0"

1
1259.
AA006

[illegible]

LEAD PAINT ABATEMENT/REMEDICATION
ENTIRE SPACE

PHASE 7:
PURGE AREAS 8 & 9

PHASE 8:
MOVE REMAINDER OF AREA 8 TO AREA 9
REMEDiate AREA 8

PHASE 9:
MOVE AREA 9 TO AREA 8
REMEDiate AREA 9

PURGE PHASE:

- MOVE ITEMS TO BE DISPOSED OF/REMOVED FROM THE BUILDING TO LEVEL ONE AREA 1 AND 2 STAGING AREAS
- CONTAINMENT:
 - STORAGE ITEMS AT PHASE 9 TO BE CLEANED IN CONTAINMENT AREA PRIOR TO MOVING INTO CLEAN AREA 9.
 - ANY ITEMS UNABLE TO FIT IN SINGLE AREA NEED TO BE MOVED TO ANOTHER FLOOR AND MOVED BACK AT END OF PHASE 9.
 - SEE SHEET 1259.AA011 FOR TYPICAL CONTAINMENT AREA DIAGRAM.

TRUE



NORTH

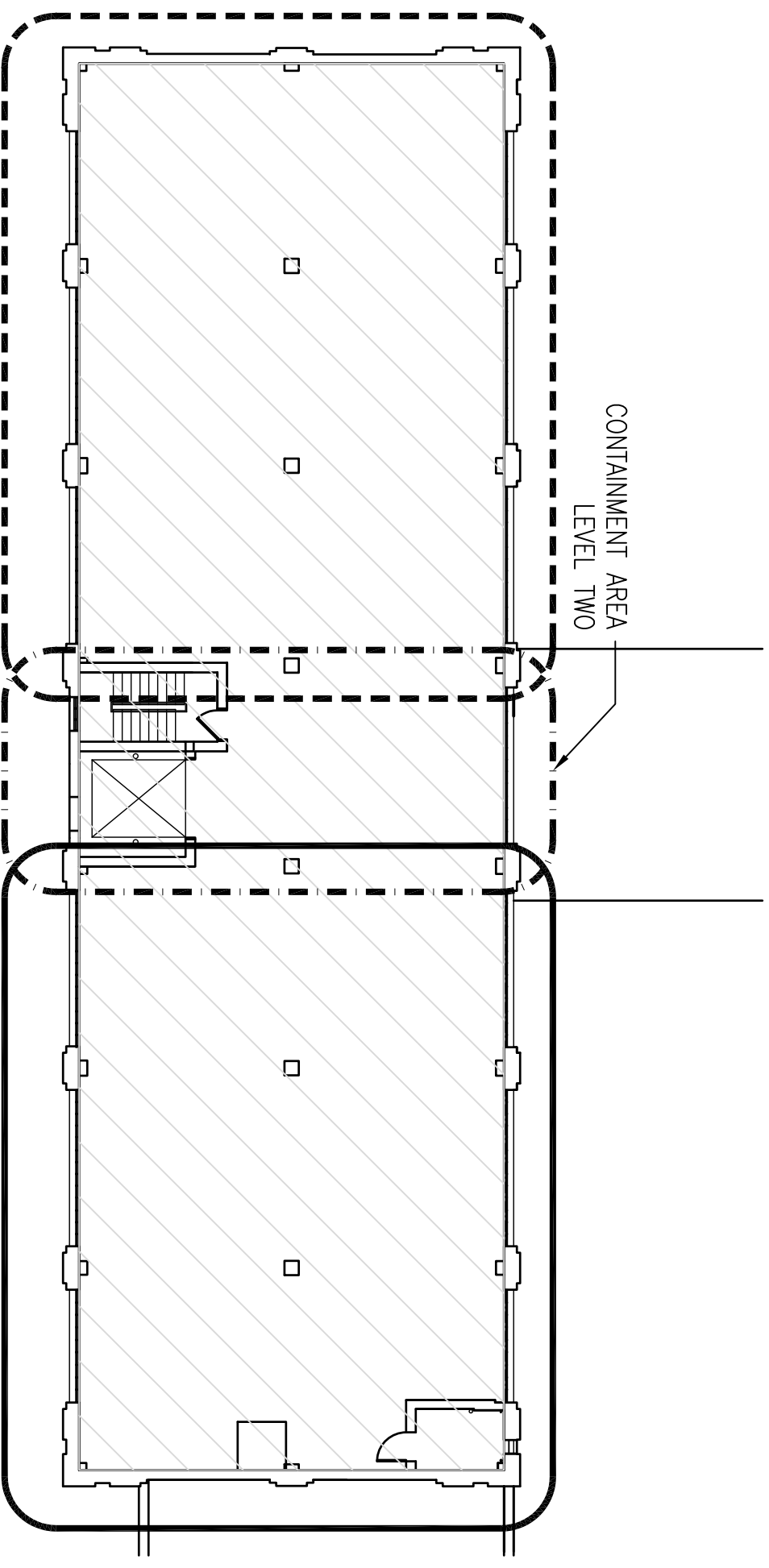
PLAN



NORTH

1
1259.
AA007

PHASING AND MOVE PLAN LEVEL TWO
SCALE: 1/16" = 1'-0"



AREA 8

AREA 9

A

	BID DOCUMENTS	03-08-2013
No.	Revisions:	Date

CONSULTANTS:



ARCHITECT/ENGINEERS:



ANDERSON
ENGINEERING

ENGINEERING • ARCHITECTURE • LAND SURVEYING
ENVIRONMENTAL SERVICES • LANDSCAPE ARCHITECTURE

Drawing Title

PHASING AND MOVE PLAN LEVEL TWO

Approved: Project Director

Project Title

LEAD ABATEMENT REMEDIATION PLAN

Location

FORT SNELL
Date

03-08-2013

Project Number
618-12-303

Building Number
222

Drawing Number

1259.AA007

**Office of
Construction
and Facilities
Management**



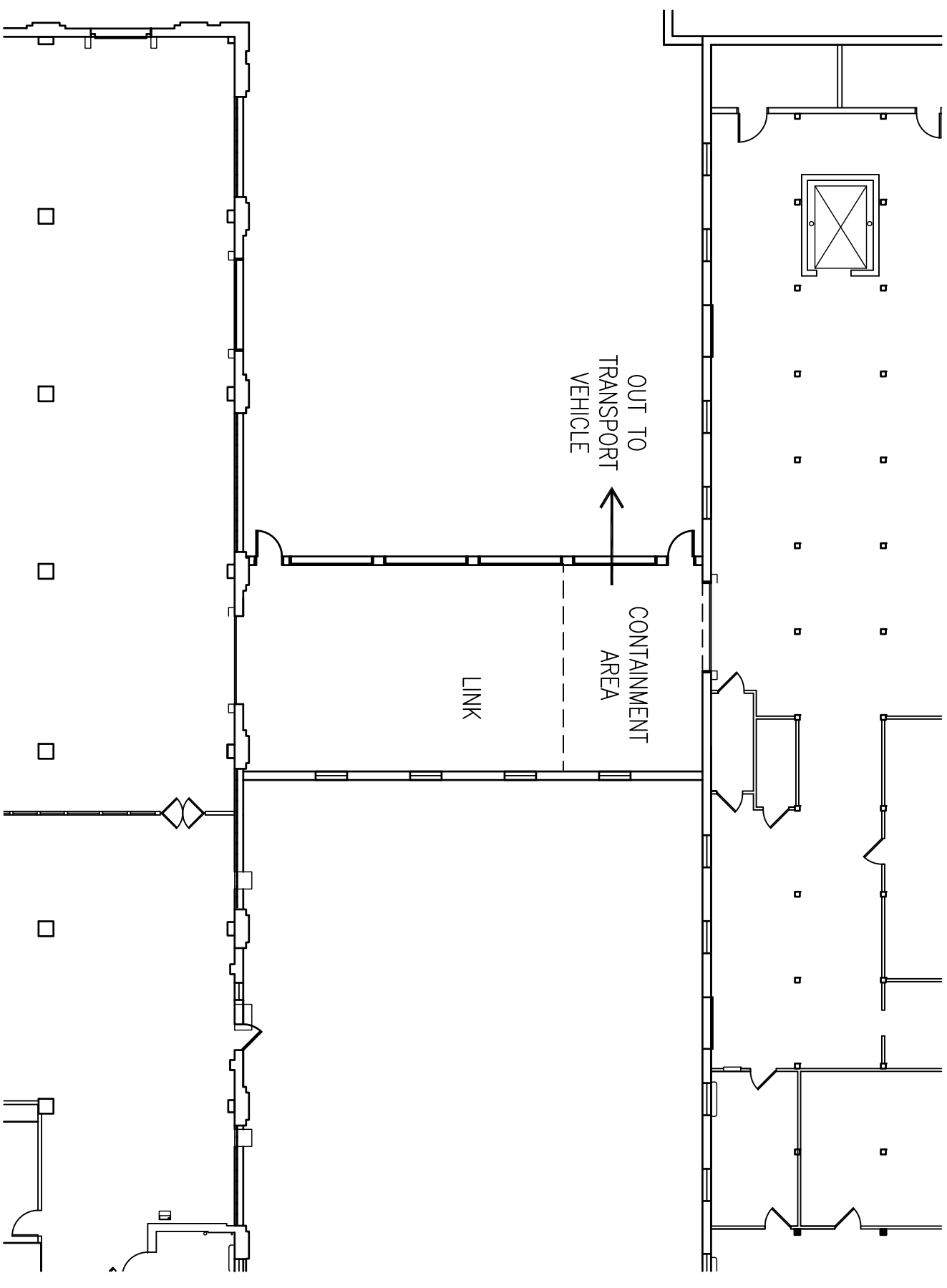
→

2

3

4

1. THE CONTAINMENT AREAS ARE DESIGNED TO PROVIDE ENCLOSED SPACE FOR THE CLEANING OF EQUIPMENT BEING DISPOSED OF OR OTHERWISE REMOVED FROM THE BUILDING.
2. EACH CONTAINMENT AREA WILL HAVE A STAGING AREA FOR CONTAMINATED EQUIPMENT WAITING THE CLEANING PROCESS.
3. ONCE ALL STORAGE AREAS ARE CLEANED, THE FINAL CLEANING OF STAGING AREAS AND CONTAINMENT AREAS WILL TAKE PLACE.



1 LEVEL ONE CONTAINMENT AREA 1
1259.
AA009 SCALE: 1/16" = 1'-0"

	BID DOCUMENTS	03-08-2013
No.	Revisions:	Date



CONSULTANTS:

ARCHITECT/ENGINEERS:



ANDERSON
ENGINEERING

ENGINEERING • ARCHITECTURE • LAND SURVEYING
ENVIRONMENTAL SERVICES • LANDSCAPE ARCHITECTURE

Drawing Title
PHASING AND MOVE PLAN
LEVEL ONE CONTAINMENT

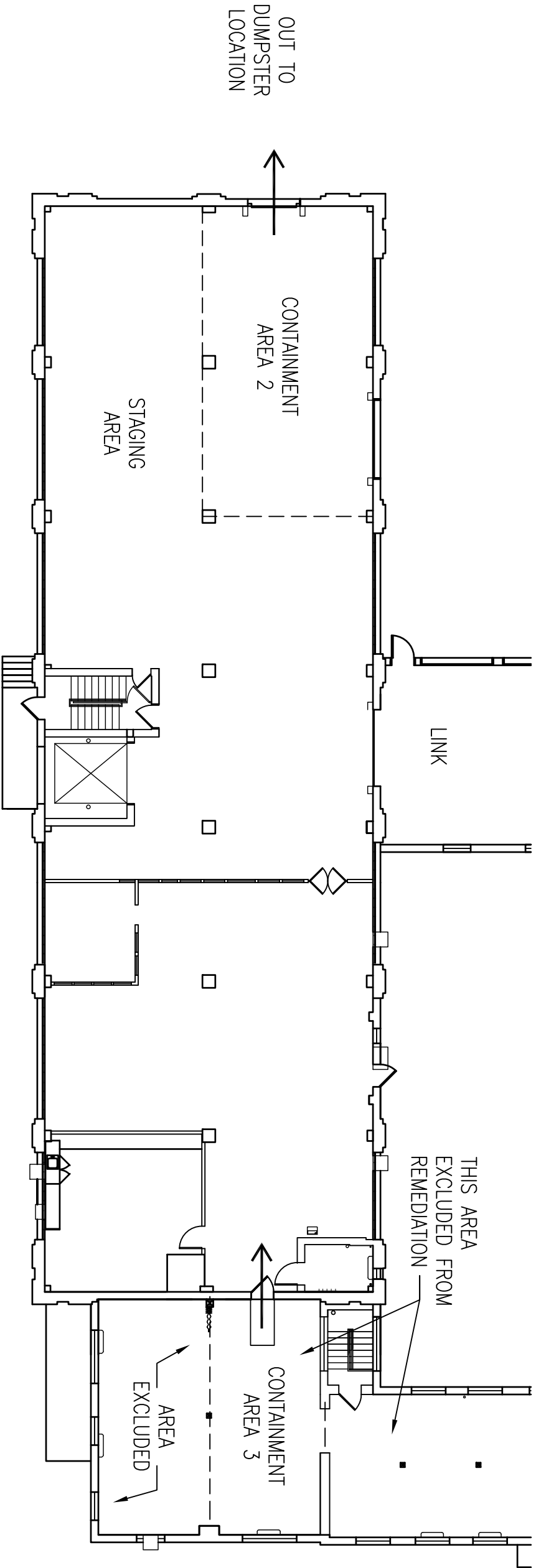
Project Title	LEAD ABATEMENT REMEDIATION PLAN
Location	PORT OF LONDON MARSHES, LONDON

Project Number 618-12-303	N
Building Number 222	
Drawing Number	

**Office of
Construction
and Facilities
Management**



- LEVEL ONE CONTAINMENT AREAS
1. THE CONTAINMENT AREAS ARE DESIGNED TO PROVIDE ENCLOSED SPACE FOR THE CLEANING OF EQUIPMENT BEING DISPOSED OF OR OTHERWISE REMOVED FROM THE BUILDING.
 2. EACH CONTAINMENT AREA WILL HAVE A STAGING AREA FOR CONTAMINATED EQUIPMENT WAITING THE CLEANING PROCESS.
 3. ONCE ALL STORAGE AREAS ARE CLEANED, THE FINAL CLEANING OF STAGING AREAS AND CONTAINMENT AREAS WILL TAKE PLACE.
 4. CONTAINMENT AREA 3 IS TO BE CLEANED BUT NOT REMEDIATED. PROVIDE LONG-TERM ENCLOSURE AND PERSONAL CLEANING AREA FOR STAFF RETURNING TO THE WAREHOUSE AFTER ACCESSING THE ANNEX FOR MAINTENANCE AND MONITORING PURPOSES. THIS ENCLOSURE IS NOT INTENDED FOR CLEANING EQUIPMENT.



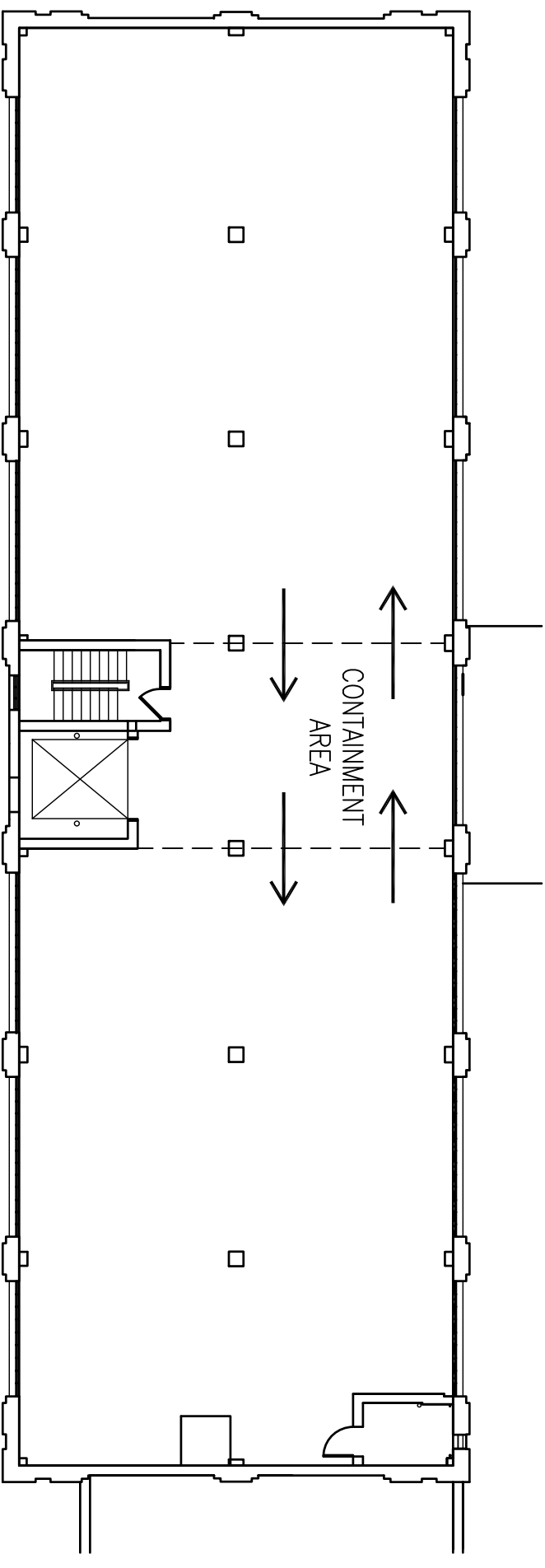
1 LEVEL ONE CONTAINMENT AREA 2 AND 3

1259. AA010 SCALE: 1/16" = 1'-0"

--	--	--	--	--	--	--	--	--	--	--	--	--	--	--	--	--	--	--	--	--	--	--	--	--	--	--	--	--	--	--	--	--	--	--	--	--	--	--	--	--	--	--	--	--	--	--	--	--	--	--	--	--	--	--	--	--	--	--	--	--	--	--	--	--	--	--	--	--	--	--	--	--	--	--	--	--	--	--	--	--	--	--	--	--	--	--	--	--	--	--	--	--	--	--	--	--	--	--	--	--	--	--	--	--	--	--	--	--	--	--	--	--	--	--	--	--	--	--	--	--	--	--	--	--	--	--	--	--	--	--	--	--	--	--	--	--	--	--	--	--	--	--	--	--	--	--	--	--	--	--	--	--	--	--	--	--	--	--	--	--	--	--	--	--	--	--	--	--	--	--	--	--	--	--	--	--	--	--	--	--	--	--	--	--	--	--	--	--	--	--	--	--	--	--	--	--	--	--	--	--	--	--	--	--	--	--	--	--	--	--	--	--	--	--	--	--	--	--	--	--	--	--	--	--	--	--	--	--	--	--	--	--	--	--	--	--	--	--	--	--	--	--	--	--	--	--	--	--	--	--	--	--	--	--	--	--	--	--	--	--	--	--	--	--	--	--	--	--	--	--	--	--	--	--	--	--	--	--	--	--	--	--	--	--	--	--	--	--	--	--	--	--	--	--	--	--	--	--	--	--	--	--	--	--	--	--	--	--	--	--	--	--	--	--	--	--	--	--	--	--	--	--	--	--	--	--	--	--	--	--	--	--	--	--	--	--	--	--	--	--	--	--	--	--	--	--	--	--	--	--	--	--	--	--	--	--	--	--	--	--	--	--	--	--	--	--	--	--	--	--	--	--	--	--	--	--	--	--	--	--	--	--	--	--	--	--	--	--	--	--	--	--	--	--	--	--	--	--	--	--	--	--	--	--	--	--	--	--	--	--	--	--	--	--	--	--	--	--	--	--	--	--	--	--	--	--	--	--	--	--	--	--	--	--	--	--	--	--	--	--	--	--	--	--	--	--	--	--	--	--	--	--	--	--	--	--	--	--	--	--	--	--	--	--	--	--	--	--	--	--	--	--	--	--	--	--	--	--	--	--	--	--	--	--	--	--	--	--	--	--	--	--	--	--	--	--	--	--	--	--	--	--	--	--	--	--	--	--	--	--	--	--	--	--	--	--	--	--	--	--	--	--	--	--	--	--	--	--	--	--	--	--	--	--	--	--	--	--	--	--	--	--	--	--	--	--	--	--	--	--	--	--	--	--	--	--	--	--	--	--	--	--	--	--	--	--	--	--	--	--	--	--	--	--	--	--	--	--	--	--	--	--	--	--	--	--	--	--	--	--	--	--	--	--	--	--	--	--	--	--	--	--	--	--	--	--	--	--	--	--	--	--	--	--	--	--	--	--	--	--	--	--	--	--	--	--	--	--	--	--	--	--	--	--	--	--	--	--	--	--	--	--	--	--	--	--	--	--	--	--	--	--	--	--	--	--	--	--	--	--	--	--	--	--	--	--	--	--	--	--	--	--	--	--	--	--	--	--	--	--	--	--	--	--	--	--	--	--	--	--	--	--	--	--	--	--	--	--	--	--	--	--	--	--	--	--	--	--	--	--	--	--	--	--	--	--	--	--	--	--	--	--	--	--	--	--	--	--	--	--	--	--	--	--	--	--	--	--	--	--	--	--	--	--	--	--	--	--	--	--	--	--	--	--	--	--	--	--	--	--	--	--	--	--	--	--	--	--	--	--	--	--	--	--	--	--	--	--	--	--	--	--	--	--	--	--	--	--	--	--	--	--	--	--	--	--	--	--	--	--	--	--	--	--	--	--	--	--	--	--	--	--	--	--	--	--	--	--	--	--	--	--	--	--	--	--	--	--	--	--	--	--	--	--	--	--	--	--	--	--	--	--	--	--	--	--	--	--	--	--	--	--	--	--	--	--	--	--	--	--	--	--	--	--	--	--	--	--	--	--	--	--	--	--	--	--	--	--	--	--	--	--	--	--	--	--	--	--	--	--	--	--	--	--	--	--	--	--	--	--	--	--	--	--	--	--	--	--	--	--	--	--	--	--	--	--	--	--	--	--	--	--	--	--	--	--	--	--	--	--	--	--	--	--	--	--	--	--	--	--	--	--	--	--	--	--	--	--	--	--	--	--	--	--	--	--	--	--	--	--	--	--	--	--	--	--	--	--	--	--	--	--	--	--	--	--	--	--	--	--	--	--	--	--	--	--	--	--	--	--	--	--	--	--	--	--	--	--	--	--	--	--	--	--	--	--	--	--	--	--	--	--	--	--	--	--	--	--	--	--	--	--	--	--	--	--	--	--	--	--	--	--	--	--	--	--	--	--	--	--	--	--	--	--	--	--	--	--	--	--	--	--	--	--	--	--	--	--	--	--	--	--	--	--	--	--	--	--	--	--	--	--	--	--	--	--	--	--	--	--	--	--	--	--	--	--	--	--	--	--	--	--	--	--	--	--	--	--	--	--	--	--	--	--	--	--	--	--	--	--	--	--	--	--	--	--	--	--	--	--	--	--	--	--	--	--	--	--	--	--	--	--	--	--	--	--	--	--	--	--	--	--	--	--	--	--	--	--	--	--	--	--	--	--	--	--	--	--	--	--	--	--	--	--	--	--	--	--	--	--	--	--	--	--	--	--	--	--	--	--	--	--	--	--	--	--	--	--	--	--	--	--	--	--	--	--	--	--	--	--	--	--	--	--	--	--	--	--	--	--	--	--	--	--	--	--	--	--	--

CONTAINMENT AREAS

1. THE CONTAINMENT AREAS ARE DESIGNED TO LIMIT THE AMOUNT OF LEAD-BASED PAINT DUST AND PARTICULATES THAT ARE MOVED ON STORED MEDICAL EQUIPMENT OR TRACKED BY THE MOVING PROCESS.
2. THE ELEVATOR, THE STAIRS AND THE LINK WILL BE TREATED AS CONTAMINATED AREAS FOR THE ENTIRE LENGTH OF THE ABATEMENT/REMEDIATION PROCESS.
3. ONCE ALL STORAGE AREAS ARE CLEANED, THE FINAL CLEANING OF THE STAIRS, ELEVATOR WILL TAKE PLACE. CONTAINMENT AREA CLEANING WILL TEMPORARILY SHUT DOWN ALL ELEVATOR ACCESS TO BUILDING AND LIMIT ACCESS TO EQUIPMENT.



CONTAINMENT PROCEDURE:

1. CONTAINMENT AREA WILL RECEIVE REMEDIATION PRIOR TO CONSTRUCTION OF ENCLOSURE.
2. STORAGE ITEMS REMAINING AFTER PURGE PHASE WILL BE MOVED FROM ONE HALF OF WAREHOUSE BUILDING TO OTHER HALF
3. CONTAINMENT ENCLOSURE WILL BE ESTABLISHED ON BOTH SIDES OF ELEVATOR BAY.
4. PROCEED WITH LEAD PAINT ABATEMENT/REMEDIATION AND CLEANING OF VACANT HALF
5. MOVE STORED ITEMS INTO CONTAINMENT AREA FOR CLEANING, MOVE INTO CLEANED VACANT HALF OF BUILDING WHEN CLEANING IS COMPLETE
6. CONTINUE LEAD PAINT ABATEMENT/REMEDIATION WITH REMAINING HALF OF BUILDING
7. CONTAINMENT AREA TO REMAIN UNTIL ENTIRE PROJECT IS COMPLETE. ANY ITEMS MOVED FROM OTHER PORTIONS OF THE BUILDING TO MOVE INTO CONTAINMENT AREA FOR CLEANING BEFORE MOVING INTO STORAGE.

TRUE




PLAN



NORTH



NORTH

TYPICAL CONTAINMENT AREA



SCALE: 1/16" = 1'-0"

LOWER LEVEL, LEVEL TWO, LEVEL THREE SIMILAR

BD DOCUMENTS				03-08-2013	
Revisions:				Date	
No.					
				CONSULTANTS:	
 ANDERSON ENGINEERING • ARCHITECTURE • LAND SURVEYING ENVIRONMENTAL SERVICES • LANDSCAPE ARCHITECTURE				ARCHITECT/ENGINEERS:	
Approved Project Director				Drawing Title PHASING AND MOVE PLAN TYPICAL CONTAINMENT	
Location FORT SNEILING MINNEAPOLIS, MN		Project Title LEAD ABATEMENT REMEDATION PLAN		Project Number 618-12-303	
Date 03-08-2013		Checked PR		Building Number 222	
Drawing Number 1259.AA011		Dwg 16 of 16		Office of Construction and Facilities Management	
