

WALL SCENE ELECTRICAL

-B2 Panel 'GLA'  
for limits shown  
B2 Panel 'GLC' limit  
shown - wall scene  
for limits

wall scene  
limit for  
panel 'GLC'

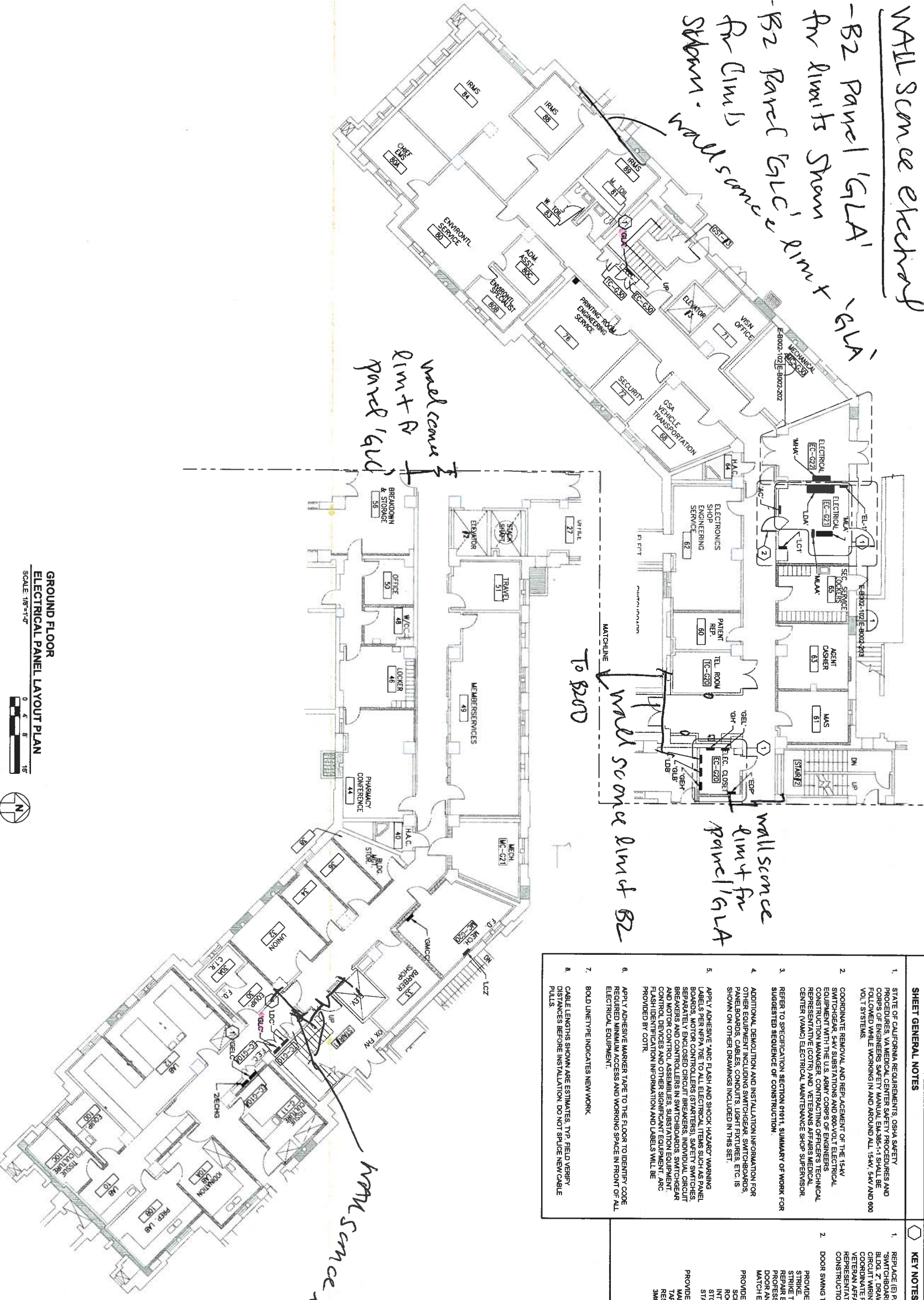
wall scene  
limit for  
panel 'GLA'

wall scene  
limit

- SHEET GENERAL NOTES**

  - STATE OF CALIFORNIA REQUIREMENTS: OSHA SAFETY, ETC. SHALL BE FOLLOWED. CENTER SHEET PROCESSES AND CORPUS OF ENGINEERS SAFETY MANUAL SHALL BE FOLLOWED WHILE WORKING IN AND AROUND ALL 15KV, 5KV AND 600 VOLT SYSTEMS.
  - COORDINATE REMOVAL AND REPLACEMENT OF THE 15KV SWITCHGEAR, 5KV SUBSTATIONS AND 600VOLT ELECTRICAL EQUIPMENT WITH THE U.S. ARMY CORPS OF ENGINEERS CONSTRUCTION MANAGER, CONTRACTING OFFICERS TECHNICAL REPRESENTATIVE (COTR) AND VETERANS AFFAIRS MEDICAL CENTER (VAMC) ELECTRICAL MAINTENANCE SHOP SUPERVISOR.
  - REFER TO SPECIFICATION SECTION 01011, SUMMARY OF WORK FOR SUGGESTED SEQUENCE OF CONSTRUCTION.
  - ADDITIONAL DEMOLITION AND INSTALLATION INFORMATION FOR PANELS, BORDERS, CABLES, CONDUITS, LIGHT FIXTURES, ETC. IS SHOWN ON OTHER DRAWINGS INCLUDED IN THIS SET.
  - APPLY ADHESIVE TAPE FLASH AND SHOCK HAZARD WARNING LABELS PER NFPA 70E TO ALL ELECTRICAL ITEMS SUCH AS PANEL BORDERS, CABLES, CONDUITS, LIGHT FIXTURES, ETC. IS SHOWN ON OTHER DRAWINGS INCLUDED IN THIS SET.
  - APPLY ADHESIVE MARKER TAPE TO THE FLOOR TO IDENTIFY CODE REQUIRED MINIMUM ACCESS AND WORKING SPACE IN FRONT OF ALL ELECTRICAL EQUIPMENT.
  - BOLD UNETYPE INDICATES NEW WORK.
  - CABLE LENGTHS SHOWN ARE ESTIMATES. TYP. FIELD VERIFY DISTANCES BEFORE INSTALLATION. DO NOT SPICE NEW CABLE PULLS.
- KEY NOTES**

  - REPLACE (E) PANEL WITH (N) PANEL AS INDICATED ON SWITCHBOARD AND PANELBOARD REPLACEMENT SCHEDULE. BRIDGE WIRING SHALL BE RECONNECTED TO THE (N) PANEL. BRIDGE CIRCUIT WIRING FOR RECONNECTION TO THE (N) PANEL WITH THE VETERAN AFFAIRS CONTRACTING OFFICERS TECHNICAL REPRESENTATIVE (COTR) AND AS INDICATED IN THE SEQUENCE OF CONSTRUCTION, SPECIFICATION SECTION 01010.
  - DOOR SWING TO BE MODIFIED AS SHOWN ON PLAN.  
  
PROVIDE NEW METAL DOOR FRAME, HINGES AND DOOR STRIKE. QUALITY TO MATCH EXISTING. FINISH OF HINGES AND STRIKE TO MATCH EXISTING CORRIDOR SIDE HARDWARE. REPAIR EXISTING DOOR AND WALL AS REQUIRED FOR A NEAT PROFESSIONAL INSTALLATION. PRIME AND PAINT FRAME AND DOOR TO MATCH EXISTING CORRIDOR SIDE. MATCH ELECTRICAL ROOM ON ELECTRICAL ROOM SIDE.  
  
PROVIDE NEW LOCKSET.  
SCHLAGE, D-SERIES, ADA, SPARTAN LEVER IN ELECTRICAL ROOM. MATCH EXISTING KING CORRIDOR SIDE.  
INTERCHANGEABLE CORE (SMALL FORMAT CORE), 7 PIN STANDARDS. TURN REMOVED LOCKSET OVER TO VA.  
  
PROVIDE DOOR SWING MARKING ON CORRIDOR FLOOR. MARK WITH 2" WIDE YELLOW VINYL FLOOR MARKING TAPE. PAINT THICK ADHESIVE VINYL, SEMI-GLOSS FINISH, RESISTANT TO WATER, OIL, RINGS AND CHEMICALS. SHARPEN OR EQUIVALENT.



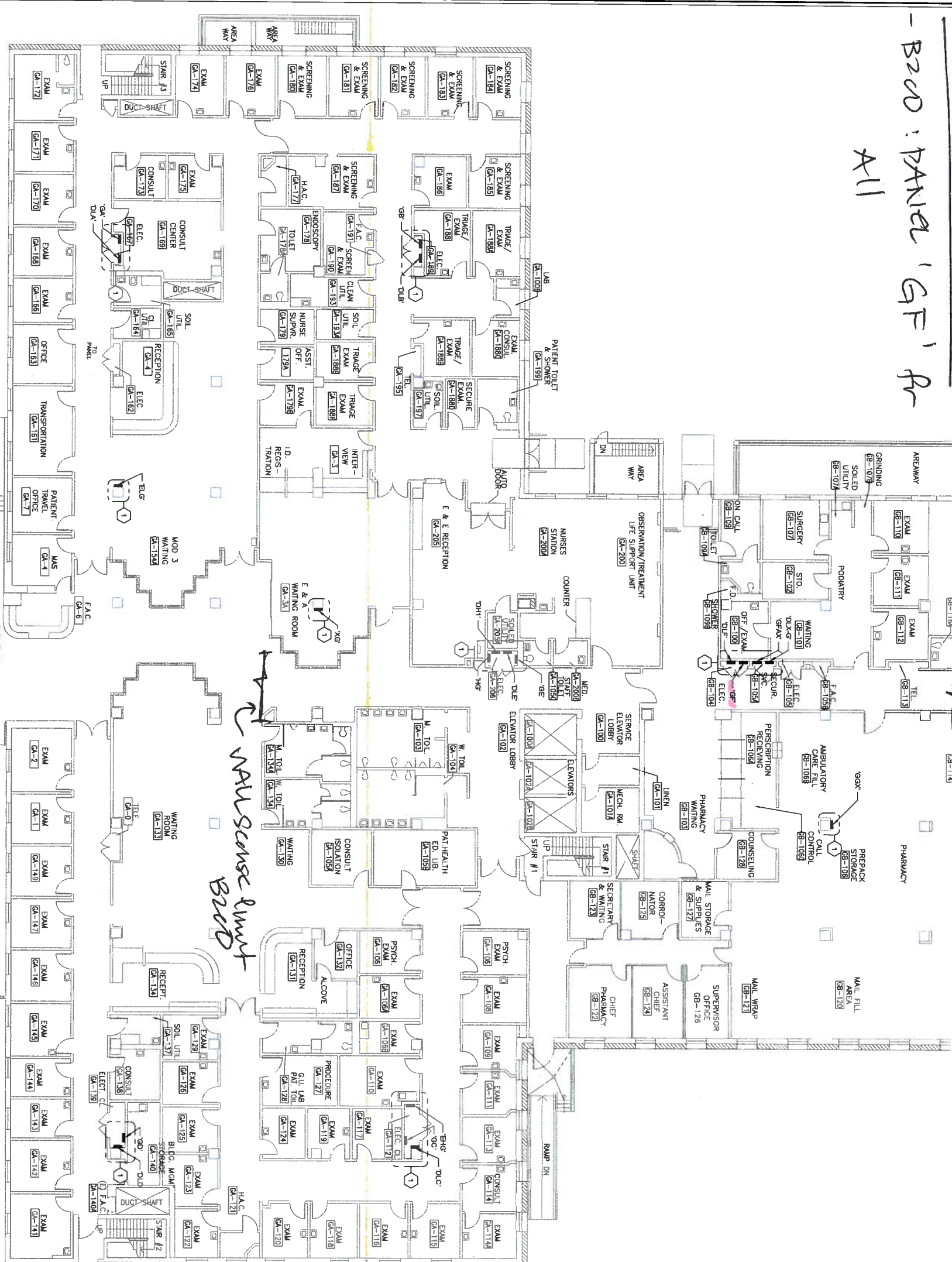


Wall Sence Sheet

- B200: Panel 'GF' R

All

Wall Sence (int B200)



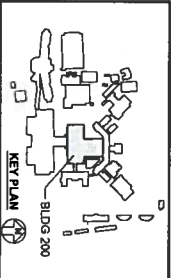
- SHEET GENERAL NOTES**
- STATE OF CALIFORNIA REQUIREMENTS, CSEA SAFETY STANDARDS AND THE U.S. ARMY CORPS OF ENGINEERS SAFETY MANUAL EM-385-1-1 SHALL BE FOLLOWED WHILE WORKING IN AND AROUND ALL 15KV, 5KV AND 800 VOLT SYSTEMS.
  - COORDINATE REMOVAL AND REPLACEMENT OF THE 15KV SWITCHGEAR, 5KV SUBSTATIONS AND 800VOLT ELECTRICAL EQUIPMENT WITH THE U.S. ARMY CORPS OF ENGINEERS CONSTRUCTION MANAGER, CONTRACTING OFFICER'S TECHNICAL REPRESENTATIVE (COTR) AND VETERANS AFFAIRS MEDICAL CENTER (VAMC) ELECTRICAL MAINTENANCE SHOP SUPERVISOR.
  - REFER TO SPECIFICATION SECTION 09011, SUMMARY OF WORK FOR SUGGESTED SEQUENCE OF CONSTRUCTION.
  - ADDITIONAL DEMOLITION AND INSTALLATION INFORMATION FOR OTHER EQUIPMENT INCLUDING SWITCHGEAR, SWITCHBOARDS, PANELBOARDS, CABLES, CONDENS, LIGHT FIXTURES, ETC. IS SHOWN ON OTHER DRAWINGS INCLUDED IN THIS SET.
  - APPLY ADHESIVE TAPE FLASH AND SHOCK HAZARD WARNING TAPE TO ALL EXPOSED ELECTRICAL EQUIPMENT, SWITCHGEAR, SEPARATELY ENCLOSED CIRCUIT BREAKERS, INDIVIDUAL CIRCUIT BREAKERS AND CONTROL PANELS IN SWITCHBOARDS, SWITCHGEAR AND MOTOR CONTROL ASSEMBLIES, SUBSTATION EQUIPMENT, CONTROL DEVICES AND OTHER SIGNIFICANT EQUIPMENT. ARC FLASH IDENTIFICATION INFORMATION AND LABELS WILL BE PROVIDED BY COTR.
  - APPLY ADHESIVE MARKER TAPE TO THE FLOOR TO IDENTIFY CODE REQUIRED MINIMUM ACCESS AND WORKING SPACE IN FRONT OF ALL ELECTRICAL EQUIPMENT.
  - BOLD LINETYPE INDICATES NEW WORK.
  - CABLE LENGTHS SHOWN ARE ESTIMATES. TYP. FIELD VERIFY DISTANCES BEFORE INSTALLATION. DO NOT SPICE NEW CABLE PULLS.
- KEYNOTES**
- PROVIDE (N) EQUIPMENT IN (N) OR (E) ENCLOSURE AS INDICATED ON SWITCHBOARD AND PANELBOARD REPLACEMENT SCHEDULE ON SHEET E-B200-101.

GROUND FLOOR ELECTRICAL PANEL LAYOUT PLAN  
SCALE: 1/8"=1'-0"



CONSULTANTS:

**WINZLER & KELLY**  
485 TESCO DRIVE  
SAN JOSE, CA 95128  
PH (408) 253-1010 • FAX (408) 257-8679  
WWW.WINKCO.COM



ARCHITECT:

**GROUND FLOOR ELECTRICAL PANEL LAYOUT PLAN**  
Approved Project Director  
Medical Center Director  
LAWRENCE H. CARROLL  
Chief Engineer  
JAMES PROHODOS

**ELECTRICAL SYSTEM UPGRADES PROJECT 662-07-028ES**  
SFAA MEDICAL CENTER  
JAN 15, 2010  
SUD CSC

Project Number: 11054-07-001  
Sheet Number: 200  
Drawing Number: E-B200-102  
Date: 18 d 24  
Office of Facilities Management  
Department of Veterans Affairs

