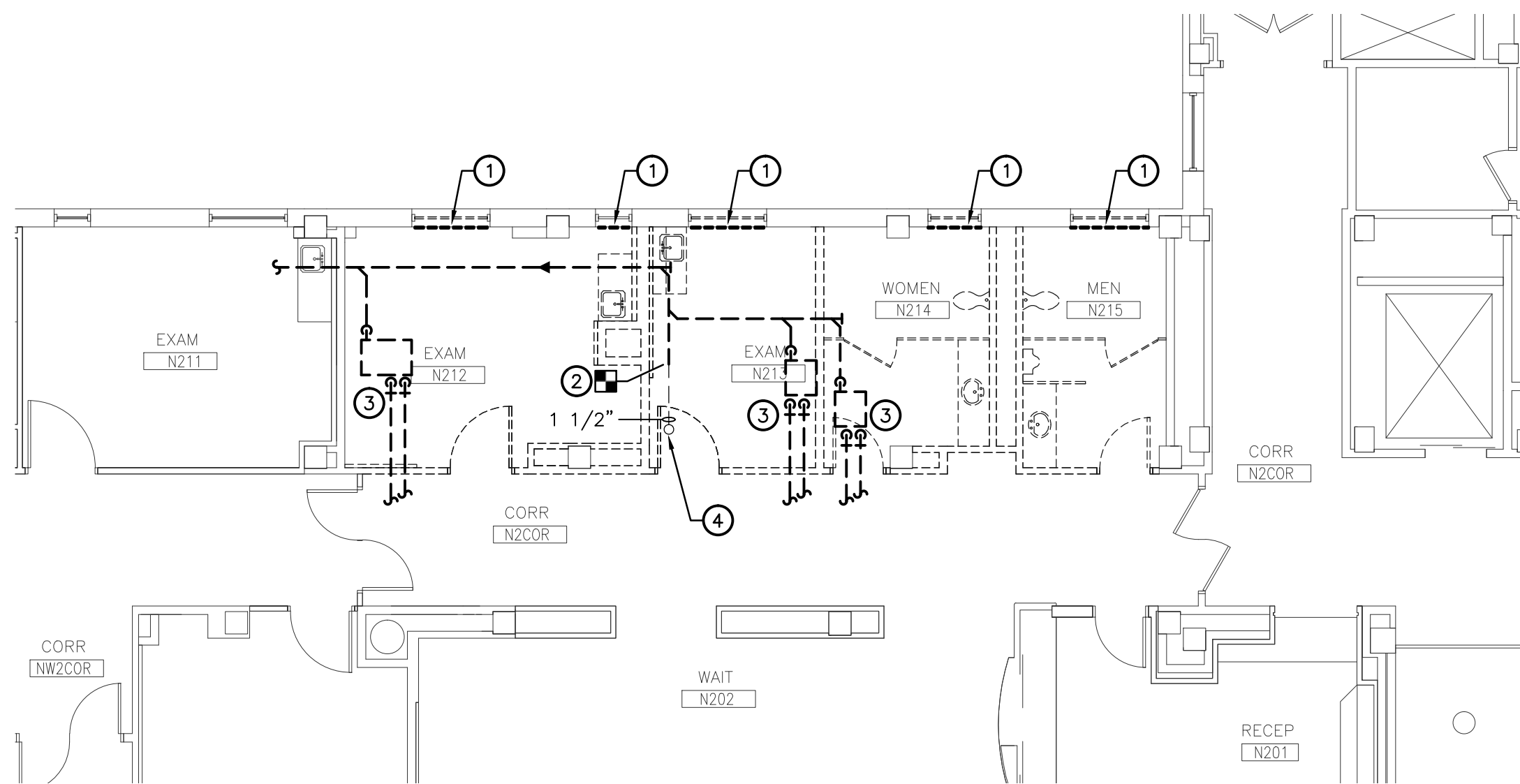
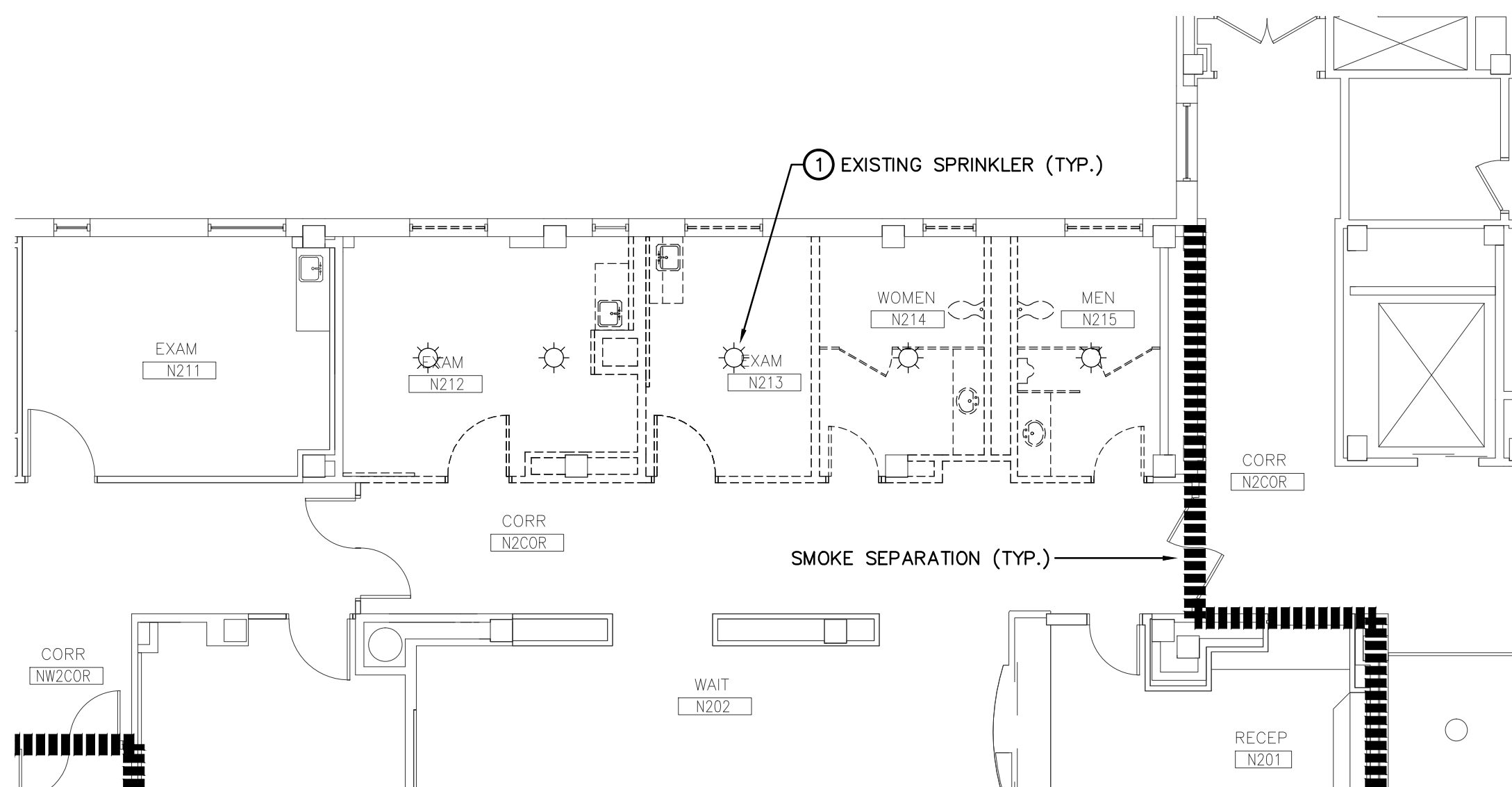


1 HVAC DEMOLITION PLAN - 2nd FLOOR  
M.I.J. SCALE: 1/8" = 1'-0"



2 HVAC PIPING DEMOLITION PLAN - 2nd FLOOR  
M.I.J. SCALE: 1/8" = 1'-0"



3 FIRE PROTECTION DEMOLITION PLAN - 2nd FLOOR  
M.I.J. SCALE: 1/8" = 1'-0"



### HVAC DEMOLITION PLAN - MECHANICAL KEYNOTES

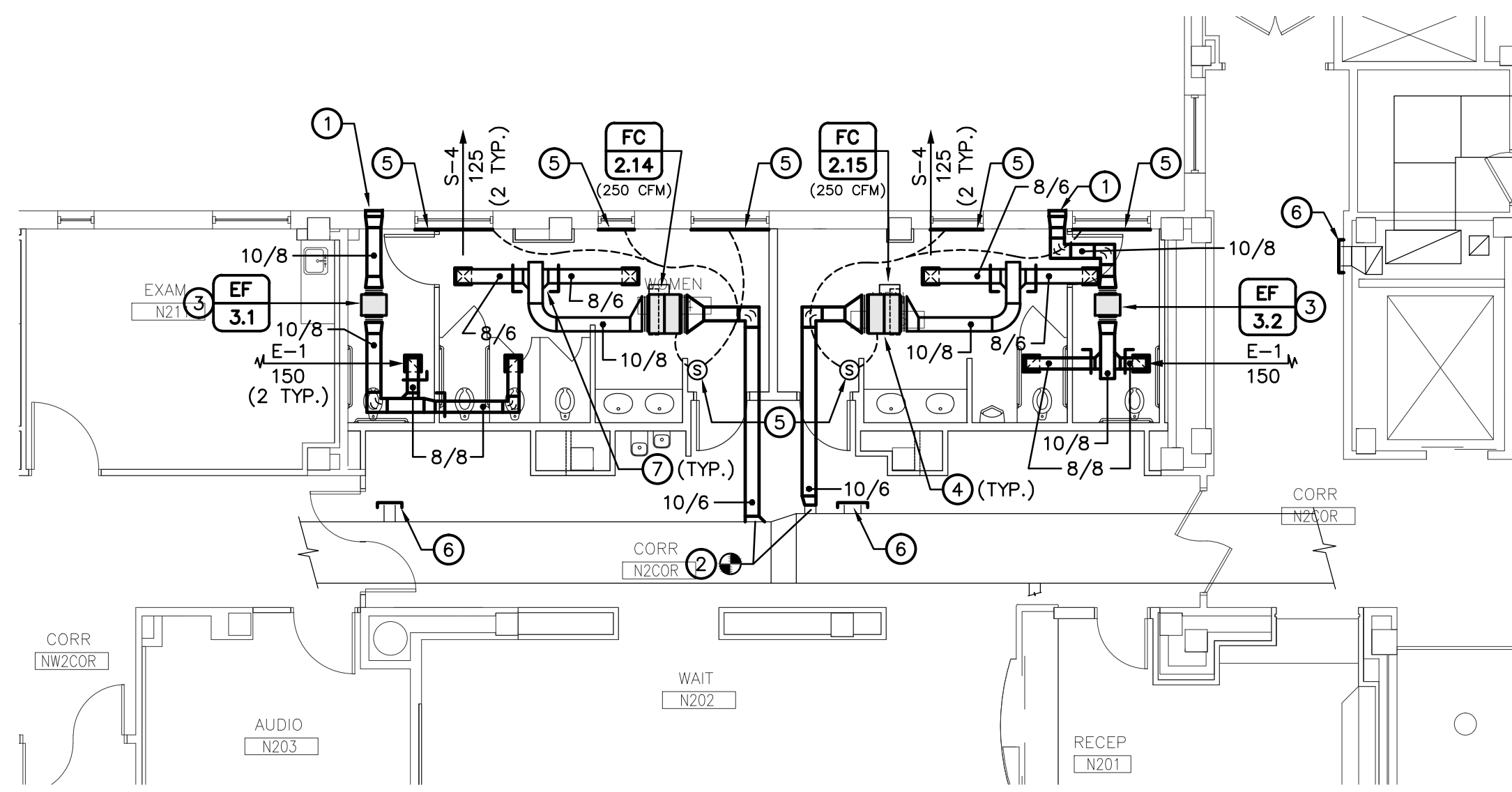
- 1 REMOVE EXISTING FAN COILS, DUCTWORK, PIPING, CONTROLS, ETC. SHOWN DASHED-BOLD. COORDINATE EXTENT OF REMOVAL WITH WORK SHOWN ON NEW PLANS. REMOVE PIPING AND DUCTWORK BACK TO MAINS AND CAP AS SHOWN ON PLANS. ALL EXISTING PIPING, DUCTWORK, ETC. THAT SERVES FIRST OR THIRD FLOORS IS TO REMAIN ACTIVE UNLESS NOTED OTHERWISE. COORDINATE REROUTING WITH NEW PLANS.
- 2 REMOVE EXISTING EXHAUST AIR DUCT AND ASSOCIATED GRILLES AND DAMPERS. REMOVE DUCTWORK BACK TO NEAREST MAIN ON THIRD FLOOR. PATCH REMAINING OPENINGS TO MATCH EXISTING CONSTRUCTION.
- 3 REMOVE EXISTING EXHAUST AIR DUCT AND ASSOCIATED GRILLES AND DAMPERS AS SHOWN. CAP DUCTWORK AS CLOSE TO CHASE WALL AS POSSIBLE. PATCH REMAINING OPENINGS IN RATED WALLS TO MATCH EXISTING.

### HVAC PIPING DEMOLITION PLAN - MECHANICAL KEYNOTES

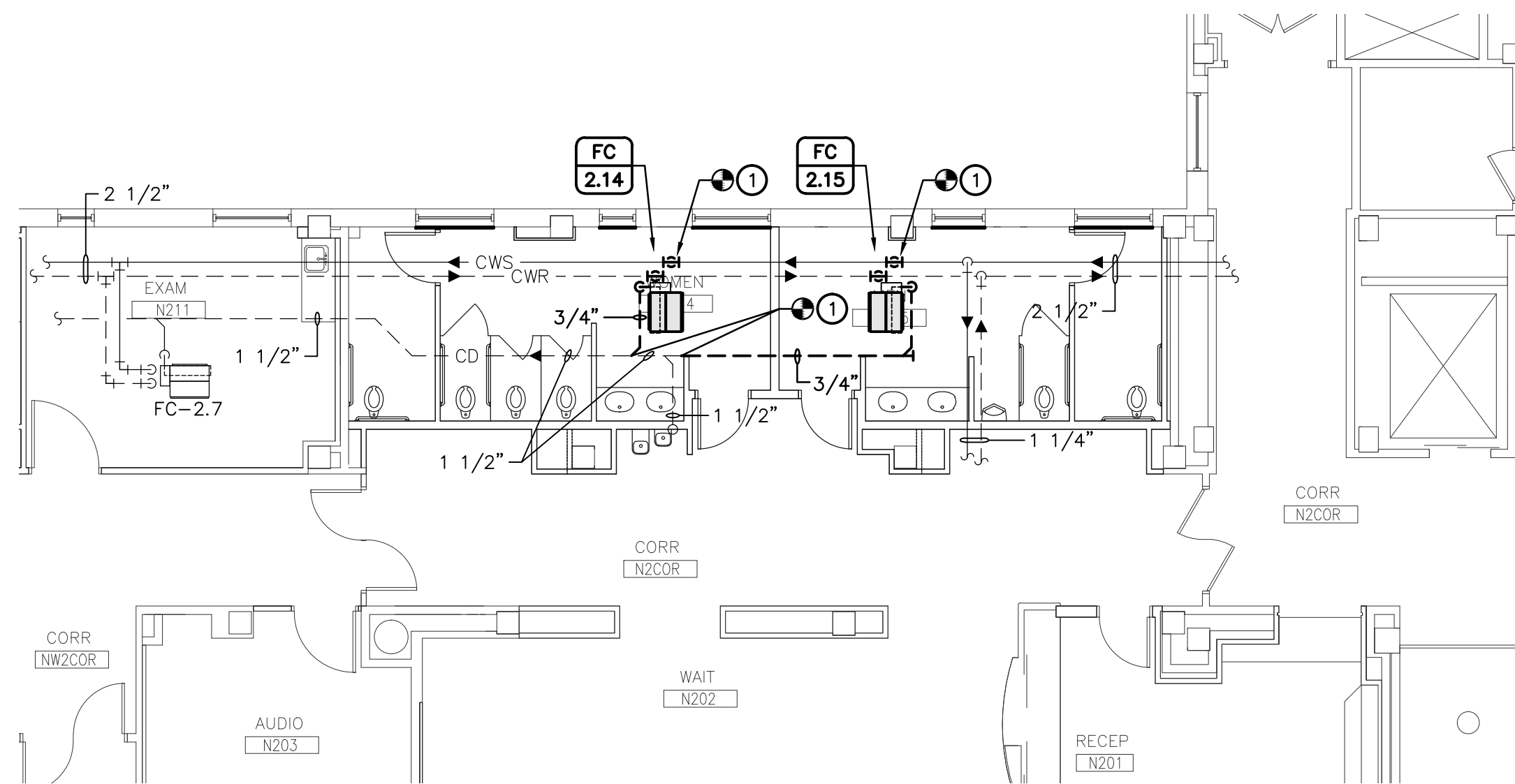
- 1 EXISTING STEAM CONVECTOR COVERS WILL BE REMOVED AND REINSTALLED BY OTHERS. REFER TO ARCHITECTURAL DRAWINGS FOR ADDITIONAL INFORMATION. PROVIDE NEW STEAM CONTROL VALVE AND MODIFICATIONS TO CONTROLS PER DETAIL 7 ON SHEET M2.1 PRIOR TO REINSTALLATION OF COVER. COORDINATE ALL REQUIRED WORK AT THESE UNITS WITH THE GENERAL CONTRACTOR.
- 2 REMOVE EXISTING PIPING TO LOCATION SHOWN. COORDINATE EXTENT OF REMOVAL WITH WORK SHOWN ON NEW PLANS.
- 3 REMOVE EXISTING FAN COILS, DUCTWORK, PIPING, CONTROLS, ETC. SHOWN DASHED-BOLD. COORDINATE EXTENT OF REMOVAL WITH WORK SHOWN ON NEW PLANS. REMOVE PIPING AND DUCTWORK BACK TO MAINS AND CAP AS SHOWN ON PLANS. ALL EXISTING PIPING, DUCTWORK, ETC. THAT SERVES FIRST OR THIRD FLOORS IS TO REMAIN ACTIVE UNLESS NOTED OTHERWISE. COORDINATE REROUTING WITH NEW PLANS.
- 4 EXISTING CONDENSATE UP TO 3RD FLOOR AND DOWN TO FIRST FLOOR TO REMAIN. SEE WORK ON NEW PLANS FOR EXTENT OF REMOVAL AND RECONNECTION OF PIPING TO REMAIN.

### FIRE PROTECTION DEMOLITION PLAN - MECHANICAL KEYNOTES

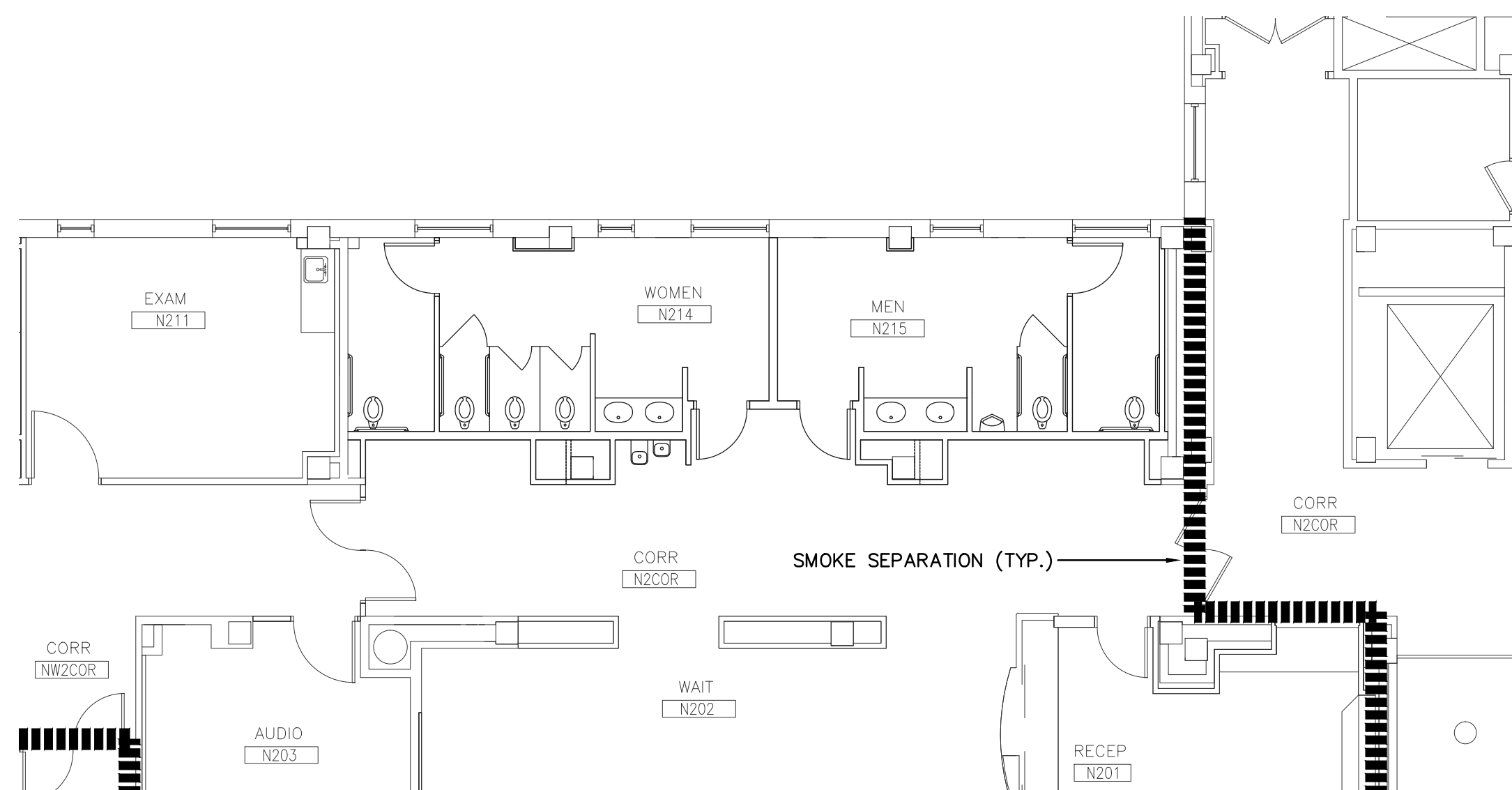
- 1 REMOVE EXISTING SPRINKLERS IN ALL AREAS DESIGNATED TO HAVE NEW CEILING. REMOVE EXISTING SPRINKLER PIPING AS REQUIRED FOR NEW SPRINKLER LAYOUT.



4 HVAC PLAN - 2nd FLOOR  
M.I.J. SCALE: 1/8" = 1'-0"



5 HVAC PIPING PLAN - 2nd FLOOR  
M.I.J. SCALE: 1/8" = 1'-0"



6 FIRE PROTECTION PLAN - 2nd FLOOR  
M.I.J. SCALE: 1/8" = 1'-0"



### HVAC PLAN - MECHANICAL KEYNOTES

- 1 TRANSITION EA DUCT TO 18/8 HOODED WALL CAP. WALL CAP SHALL BE GREENHECK WC-1818 OR APPROVED EQUAL WITH INTEGRAL BIRDSCREEN AND BACKRAFT DAMPER.
- 2 CONNECT NEW DUCT TO EXISTING AS SHOWN. FIELD VERIFY EXISTING DUCT SIZE AND BEST LOCATION FOR CONNECTION.
- 3 IN-LINE FAN, SEE DETAIL 6 ON M2.1.
- 4 FAN COIL, SEE DETAIL 1 & 7 ON SHEET M2.1 (TYP.).
- 5 PROVIDE NEW ROOM TEMPERATURE SENSOR FOR CONTROL OF FCU AND EXISTING STEAM CONVECTOR. REPLACE STEAM CONVECTOR CONTROL VALVE WITH NEW VALVE AND CONTROLS. VERIFY EXACT VALVE LOCATION AND REQUIREMENTS WITH EXISTING CONDITIONS. COORDINATE REMOVAL AND REPLACEMENT OF CONVECTOR COVER WITH GENERAL CONTRACTOR. REFER TO DETAIL 7 ON M2.1.
- 6 CAP EXISTING DUCT AIR-TIGHT.
- 7 LOW-LOSS FITTING, SEE DETAIL 5 ON SHEET M2.1 (TYP.).

### HVAC PIPING PLAN - MECHANICAL KEYNOTES

- 1 3/4" CWS/CWR AND 3/4" CD TO EACH FAN COIL UNIT. PROVIDE CONNECTIONS TO CONDENSATE AND CWS/CWR PIPING INSTALLED AS PART OF A SEPARATE CONTRACT. SEE DETAILS 1, 2, 3 & 7 ON SHEET M2.1.

### FIRE PROTECTION GENERAL NOTES

1. BUILDING IS PROTECTED BY AN EXISTING FIRE SPRINKLER AND STEAMPIPE SYSTEM IN ACCORDANCE WITH THE REQUIREMENTS OF NFPA 13. THE EXISTING FIRE SPRINKLER SYSTEM SHALL BE MODIFIED AS REQUIRED TO PROVIDE SPRINKLER COVERAGE FOR THE RENOVATION AREAS. AVAILABLE WATER PRESSURE AND FLOW SHALL BE VERIFIED AT THE BUILDING.
2. EXISTING SPRINKLER LOCATIONS AND SPRINKLER PIPING ARE INDICATED IN ORDER TO CONVEY THE GENERAL ARRANGEMENT OF THE SYSTEM. FIELD VERIFY ALL EXISTING FIRE PROTECTION SYSTEM CONDITIONS.
3. PROVIDE A COMPLETE AND OPERABLE FIRE PROTECTION SYSTEM IN COMPLIANCE WITH ALL APPLICABLE STATE AND LOCAL CODES, LAWS AND REGULATIONS. DESIGN SHALL BE BASED ON HYDRAULIC CALCULATIONS PER NFPA 13, WITH SHOP DRAWINGS PREPARED PER REQUIREMENTS OF AUTHORITY HAVING JURISDICTION.
4. ALL AREAS INCLUDED IN THE RENOVATION WORK SHALL BE SPRINKLED PER LATEST EDITION OF APPLICABLE NFPA STANDARDS UNLESS NOTED OTHERWISE. ON THE DRAWINGS, ENTIRE SYSTEM SHALL BE INSTALLED PER VA GUIDELINES, LOCAL FIRE DEPARTMENT REQUIREMENTS AND REQUIREMENTS OF AUTHORITY HAVING JURISDICTION.
5. EXISTING FIRE PROTECTION SYSTEMS WHICH SERVE AREAS OF THE BUILDING OUTSIDE THE DESIGNATED RENOVATION AREAS SHALL BE MAINTAINED. ANY REQUIRED SHUTDOWN OF THESE SYSTEMS SHALL BE COORDINATED WITH THE PROJECT CONTRACTOR.
6. DURING DEMOLITION AND REMOVAL PHASES OF THE PROJECT, THE EXISTING FIRE SPRINKLER SYSTEM IN THE RENOVATED AREAS SHALL BE MAINTAINED INTACT AND FULLY FUNCTIONAL.
7. DRAWINGS ARE DIAGRAMMATIC AND INTENDED TO CONVEY THE SCOPE OF WORK AND GENERAL ARRANGEMENT OF THE SYSTEM. REFER TO ARCHITECTURAL DRAWINGS FOR CEILING TYPES AND LOCATIONS OF EXPOSED STRUCTURE. COORDINATE SPRINKLER SYSTEM LAYOUT WITH ALL NEW AND EXISTING ARCHITECTURAL, STRUCTURAL, HVAC, PLUMBING, AND ELECTRICAL COMPONENTS. HVAC, PLUMBING, AND ELECTRICAL COMPONENTS SHALL TAKE PRECEDENCE IN THE EVENT OF AN INSTALLATION CONFLICT.
8. EXISTING SPRINKLER PIPING SHALL BE RELOCATED OR REPLACED AS REQUIRED FOR THE INSTALLATION OF NEW MECHANICAL AND ELECTRICAL EQUIPMENT, DUCTWORK, PIPING AND DEVICES.

### ARCHITECT/ENGINEERS:



Calvin L. Hinz Architects, P.C.  
3705 North 200th Street  
Elkhorn, Nebraska 68022  
Phone: 402.291.6941 Fax: 402.291.9193



11620 ARBOR STREET SUITE 100  
OMAHA, NEBRASKA 68144  
PHONE: 402.932.0100  
FAX: 402.932.1001  
www.krsengineering.com  
KRS # 121013-A  
COPYRIGHT 2012  
This document and the information contained may not be reproduced without the express written permission of KRS Engineering, LLC. Unauthorized copying, disclosure or construction use are prohibited by the copyright law.

### Drawing Title

HVAC, HVAC PIPING AND FIRE PROTECTION  
DEMOLITION AND NEW FLOOR PLANS - 2nd FLOOR

Approved Project Director  
KEVIN HUTSELL

CONSTRUCTION DOCUMENT (CD-3) SUBMITTAL 100X  
DECEMBER 31, 2012

### Project Title

RENOVATE 2ND FLOOR RESTROOMS  
GI NWIHCs

Location  
VAMC Grand Island, NE

Date  
DECEMBER 31, 2012

Checked  
MKL

Drawn  
SFP

Project Number  
636-13-135

Building Number  
ONE

Drawing Number  
M1.1

Dwg. 8 of 11

Office of  
Construction and  
Facilities  
Management

