

three inches = one foot
one and one-half inches = one foot
one inch = one foot
three-quarters inch = one foot
one-half inch = one foot
three-eighths inch = one foot
one-quarter inch = one foot
one-eighth inch = one foot



EQUIPMENT LEGEND		
(REFER TO SPECIFICATIONS FOR INFORMATION)		
#	JSN	DESCRIPTION
1	A1010	TELECOMMUNICATION OUTLET
1A	A1066	MIRROR, FLOAT GLASS, W/ SS FRAME, 18" X 40"
1B	A1040	72" HIGH X 12" WIDE X 18" DEEP 2-TIER LOCKERS
1C	A1080	MIRROR, POSTURE, WALL MOUNTED
1D	A5075	DISPENSER, SOAP, DISPOSABLE (INSTALLED BY THE VA)
1E	A5080	DISPENSER, PAPER TOWEL, SS, SURFACE MOUNTED (INSTALLED BY THE VA)
1F	A5090	DISPOSAL, SANITARY NAPKIN, SS, SURFACE MOUNTED
1G	A5109	GRAB BARS (36" AND 42")
1H	A5145	HOOK, GARMENT, DOUBLE, SS, SURFACE MOUNTED
1I	A5200	DISPENSER, TOILET TISSUE, SS, 2-ROLL, SURFACE MOUNTED
1J	A5210	BRACKET FOR FLAT SCREEN PANEL, WALL MOUNTED W/ ADJUST ARM
1K	A5220	WALL BACKING FOR FLAT SCREEN PANEL BRACKET
2A	CS010	SINK, SS, SINGLE COMPARTMENT, 22"X19" UNDER COUNTER MOUNTED
2B	CT030	COUNTERTOP, SOLID SURFACE
3A	P3070	SINK, WALL MOUNTED
3B	P9050	TOILET, WALL MOUNTED
4A	U0004	DESK/WORKSPACE
4B	U0005	BASE CABINETS
4C	U0006	WALL CABINETS W/ ADJUSTABLE SHELVING
4D	U0007	EXISTING BENCH AND PEDESTAL LEGS. (BLDG 110 TO USE SALVAGED BENCH)
4E	U0008	LAMINATED SECURITY GLASS PANELS AND STAINLESS STEEL SUPPORT RODS
4F	U0009	LOW WALL, LAMINATED GLASS PANELS AND STAINLESS STEEL SUPPORT RODS
4G	U0010	18" DEEP PLASTIC LAMINATE SHELVING WITH L BRACKETS
4H	U0011	6" RAISED FLOOR FOR SERVER/CONSOLE WIRING
4I	U0012	WIRE MESH CAGE
4J	U0013	EXISTING WEAPONS TUBE
5A	X0001	SERVER
5B	X0002	UPS
5C	X0003	MAINTENANCE-BYPASS

RELEASED FOR CONSTRUCTION
100% SPRINKLERED

Revisions

Date

ENGINEERS:

MCE

MILLS-CONOLY ENGINEERING, P.C.

8218 Old Federal Road
Montgomery, AL 36117
TELEPHONE: (334) 270-0010

25 SUMMERALL GATE ROAD
ANNISTON, ALABAMA 36005
PH 256/820-9897

WHORTON ENGINEERING, INC.
HVAC - PLUMBING - PROCESS CONTROL

Professional Stamp/Seal

STATE OF GEORGIA

REGISTERED ARCHITECT

CHARLES EDWARD MASSEY

01-23-13

ARCHITECT:

Wesseldyk + Associates

Architecture
Planning
Consulting

1465 Northside Drive N.W.
Suite 215
Atlanta, GA 30318
ph: 404-855-7923

Drawing Title

INTERIOR ELEVATIONS AND DETAILS- BLDG 110 UPTOWN

Approved

Approved

Approved

Approved

Building No.

BLDG 110 +801

Scale

1/2" = 1'-0"

Drawn/Checked

MDB

Location

BLDG 110 UPTOWN (UD)
BLDG 801 DOWNTOWN (DD)

Augusta, GA

Date

01-23-2013
FINAL

Project No.

509-12-106

Drawing No.

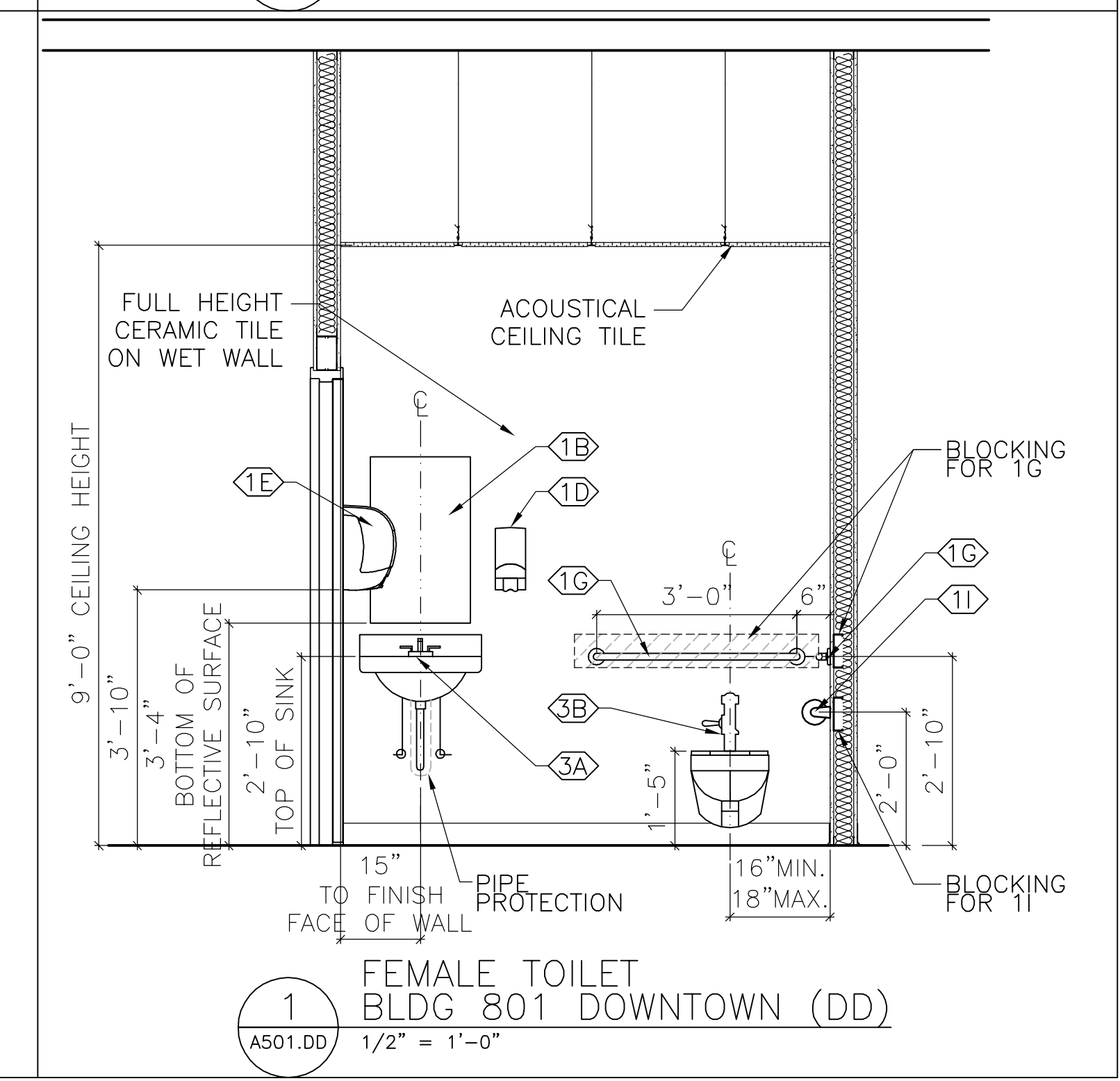
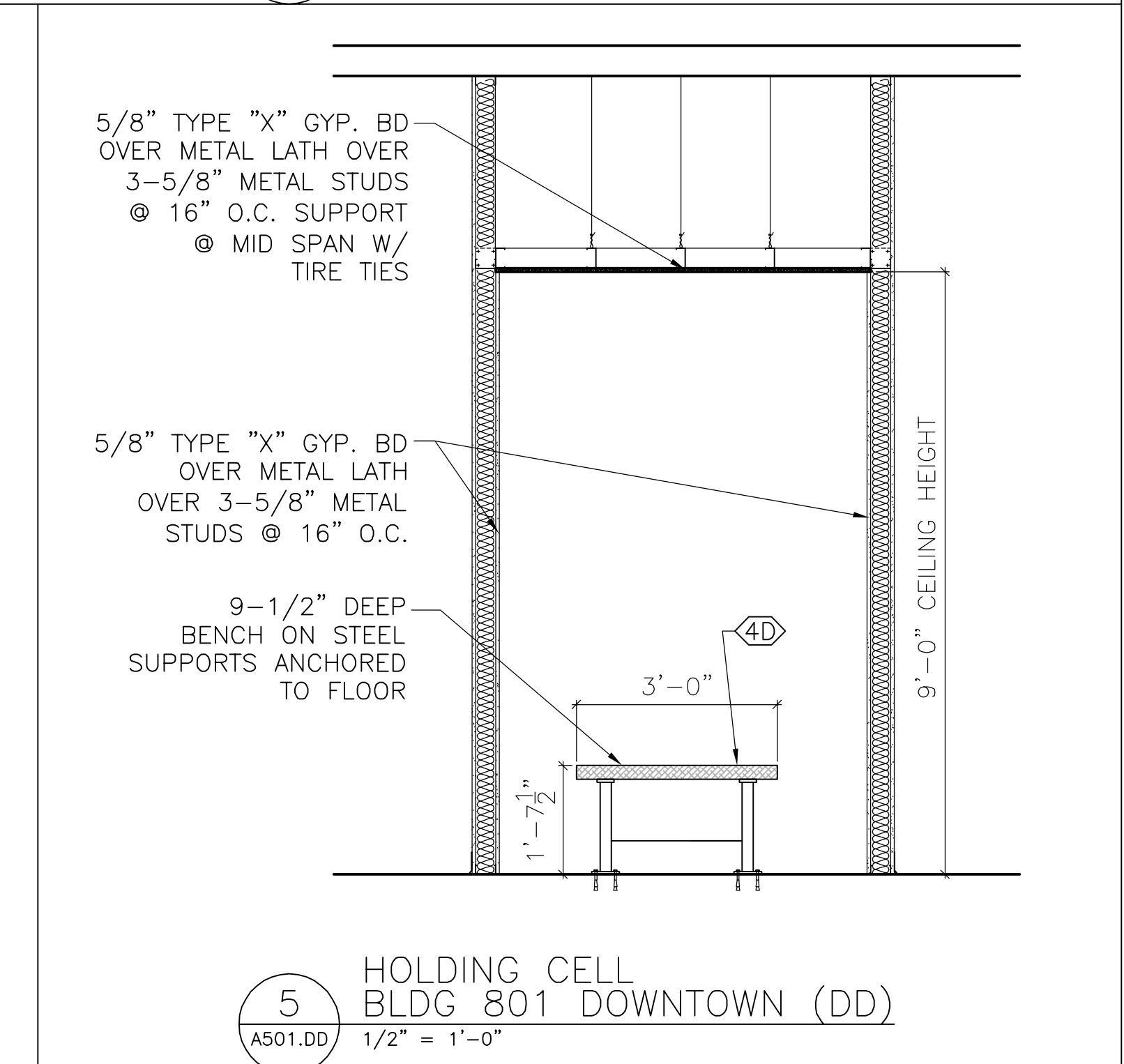
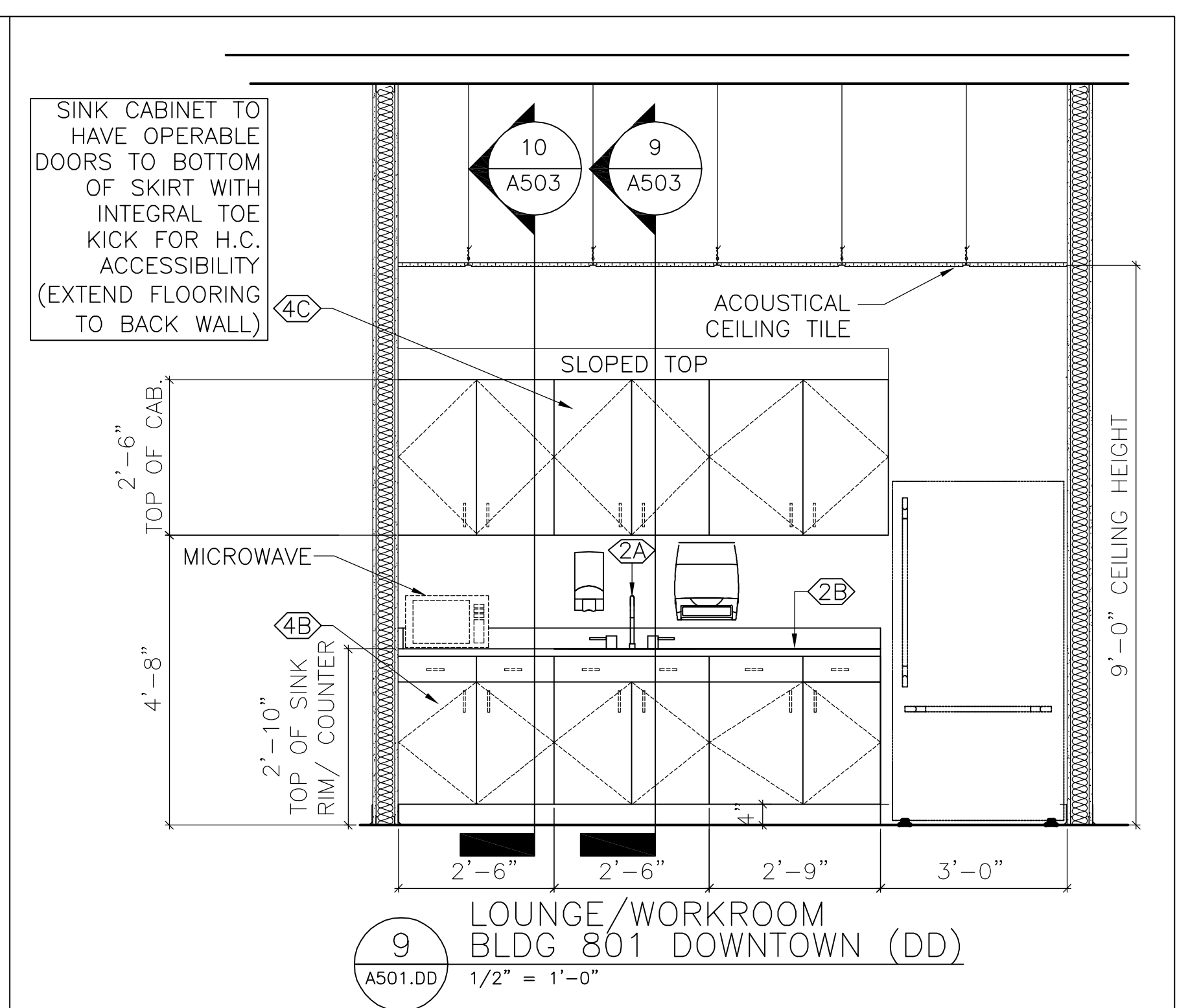
A500.UD

Dwg. 31 of 143



Office of Facilities Management

Department of Veterans Affairs

VA FORM 08-6231, FEB. 1983 1 2 3 4 5 6 7 8 9



RELEASED FOR CONSTRUCTION
100% SPRINKLERED

Revisions		Date		ENGINEERS:				Professional Stamp/Seal		ARCHITECT:				Drawing Title		SECURITY ENHANCEMENTS		Date		Office of Facilities Management					
				MCE MILLS-CONOLY ENGINEERING, P.C. 8218 Old Federal Road TELEPHONE: (334) 270-0010 Montgomery, AL 36117 FAX: (334) 270-0040						Wesseldyk + Associates Architecture Planning Consulting 1465 Northside Drive N.W. Suite 215 Atlanta, GA 30318 ph: 404-855-7923		INT. ELEVATIONS AND DETAILS		AUGUSTA VAMC, AUGUSTA, GA		01-23-2013 FINAL		Project No.							
												WHORTON ENGINEERING, INC. HVAC - PLUMBING - PROCESS CONTROL 25 SUMMERLATE ROAD PH 256/820-9897 ANNISTON, ALABAMA 36205 FAX 256/820-9896		BLDG 801 DOWNTOWN		BLDG 801 DOWNTOWN, GA		509-12-106				DRAWING NO.			
												Approved		Approved		Building No.		Scale		Drawn/Checked		A501.DD			
														Approved		Approved		BLDGS 110 +801		1/2" = 1'-0"		MDB		Dwg 32 of 143	
																		Location				Department of Veterans Affairs			
																		BLDG 110 UPTOWN (UD) BLDG 801 DOWNTOWN (DD)		AUGUSTA, GA					

0 6 12 18 24 30 36 42 48 54 60 66 72 78 84 90 96 102 108 114 120 126 132 138 144 150 156 162 168 174 180 186 192 198 204 210 216 222 228 234 240 246 252 258 264 270 276 282 288 294 300 306 312 318 324 330 336 342 348 354 360 366 372 378 384 390 396 402 408 414 420 426 432 438 444 450 456 462 468 474 480 486 492 498 504 510 516 522 528 534 540 546 552 558 564 570 576 582 588 594 600 606 612 618 624 630 636 642 648 654 660 666 672 678 684 690 696 702 708 714 720 726 732 738 744 750 756 762 768 774 780 786 792 798 804 810 816 822 828 834 840 846 852 858 864 870 876 882 888 894 900 906 912 918 924 930 936 942 948 954 960 966 972 978 984 990 996 1000

A three inches = one foot
B one and one-half inches = one foot
C one inch = one foot
D three-quarters inch = one foot
E one-half inch = one foot
F three-eighths inch = one foot
one-quarter inch = one foot
one-eighth inch = one foot



EQUIPMENT LEGEND		
(REFER TO SPECIFICATIONS FOR INFORMATION)		
#	JSN	DESCRIPTION
1	A1010	TELECOMMUNICATION OUTLET
1A	A1066	MIRROR, FLOAT GLASS, W/ SS FRAME, 18" X 40"
1B	A1040	72" HIGH X 12" WIDE X 18" DEEP 2-TIER LOCKERS
1C	A1080	MIRROR, POSTURE, WALL MOUNTED
1D	A5075	DISPENSER, SOAP, DISPOSABLE (INSTALLED BY THE VA)
1E	A5080	DISPENSER, PAPER TOWEL, SS, SURFACE MOUNTED (INSTALLED BY THE VA)
1F	A5090	DISPOSAL, SANITARY NAPKIN, SS, SURFACE MOUNTED
1G	A5109	GRAB BARS (36" AND 42")
1H	A5145	HOOK, GARMENT, DOUBLE, SS, SURFACE MOUNTED
1I	A5200	DISPENSER, TOILET TISSUE, SS, 2-ROLL, SURFACE MOUNTED
1J	A5210	BRACKET FOR FLAT SCREEN PANEL, WALL MOUNTED W/ ADJUST ARM
1K	A5220	WALL BACKING FOR FLAT SCREEN PANEL BRACKET
2A	CS010	SINK, SS, SINGLE COMPARTMENT, 22"X19" UNDER COUNTER MOUNTED
2B	CT030	COUNTERTOP, SOLID SURFACE
3A	P3070	SINK, WALL MOUNTED
3B	P9050	TOILET, WALL MOUNTED
4A	U0004	DESK/WORKSPACE
4B	U0005	BASE CABINETS
4C	U0006	WALL CABINETS W/ ADJUSTABLE SHELVING
4D	U0007	EXISTING BENCH AND PEDESTAL LEGS. (BLDG 110 TO USE SALVAGED BENCH)
4E	U0008	LAMINATED SECURITY GLASS PANELS AND STAINLESS STEEL SUPPORT RODS
4F	U0009	LOW WALL, LAMINATED GLASS PANELS AND STAINLESS STEEL SUPPORT RODS
4G	U0010	18" DEEP PLASTIC LAMINATE SHELVING WITH L BRACKETS
4H	U0011	6" RAISED FLOOR FOR SERVER/CONSOLE WIRING
4I	U0012	WIRE MESH CAGE
4J	U0013	EXISTING WEAPONS TUBE
5A	X0001	SERVER
5B	X0002	UPS
5C	X0003	MAINTENANCE-BYPASS

Revisions

Date

ENGINEERS:

MCE MILLS-CONOLY ENGINEERING, P.C.

WHORTON ENGINEERING, INC.

Professional Stamp/Seal

ARCHITECT:

Wesseldyk + Associates

Drawing Title

INT. ELEVATIONS, SECTIONS AND DETAILS

SECURITY ENHANCEMENTS

AUGUSTA VAMC, AUGUSTA, GA

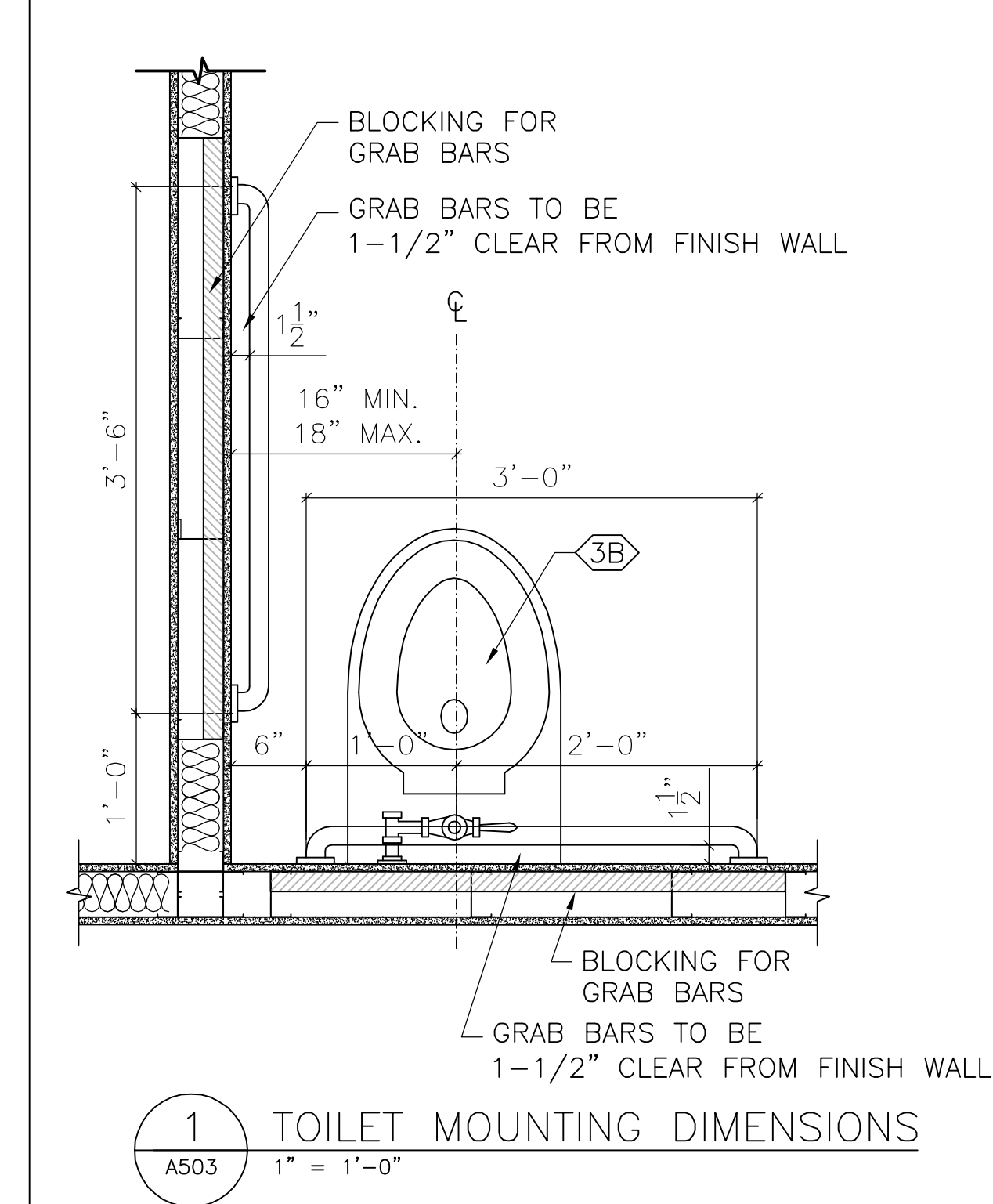
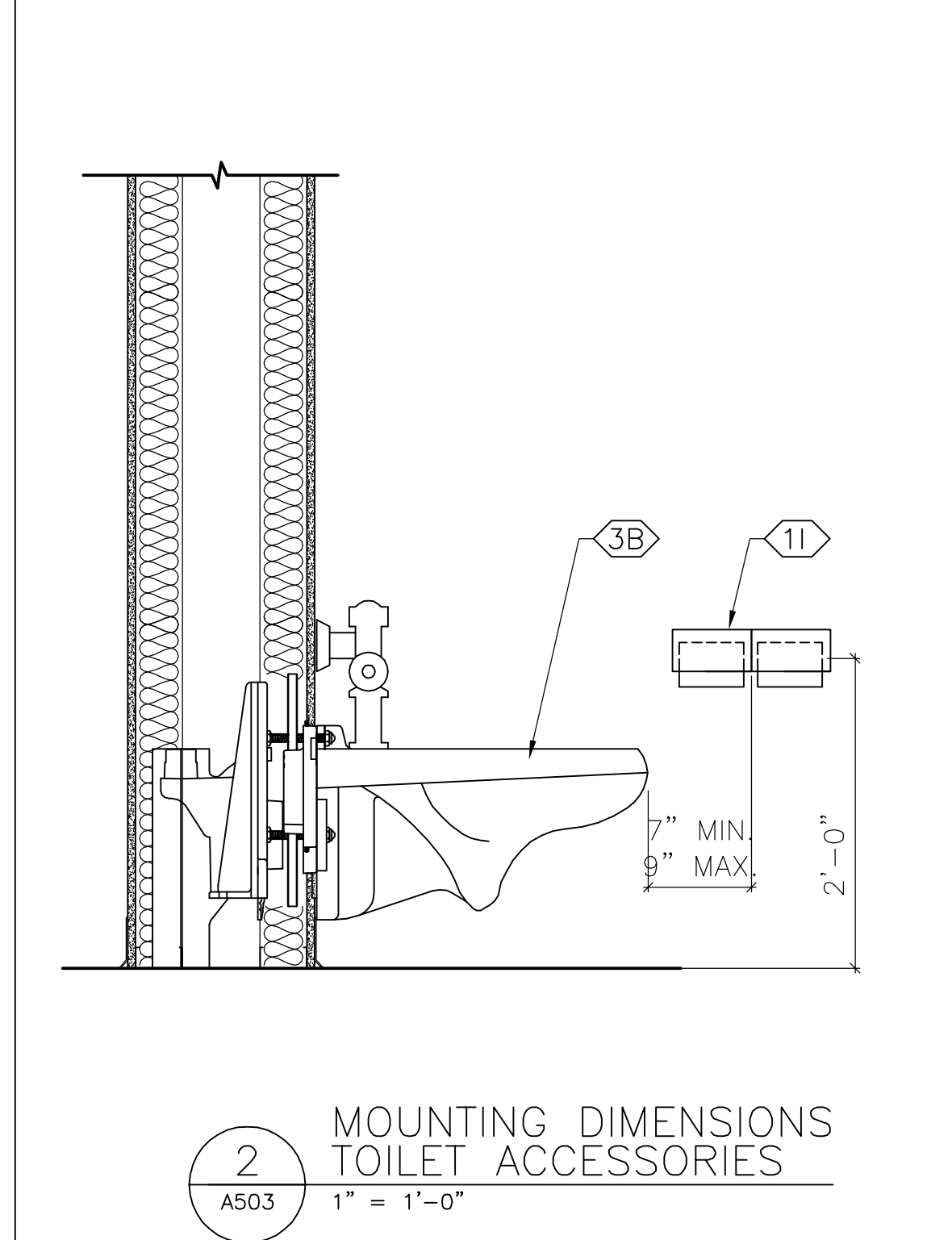
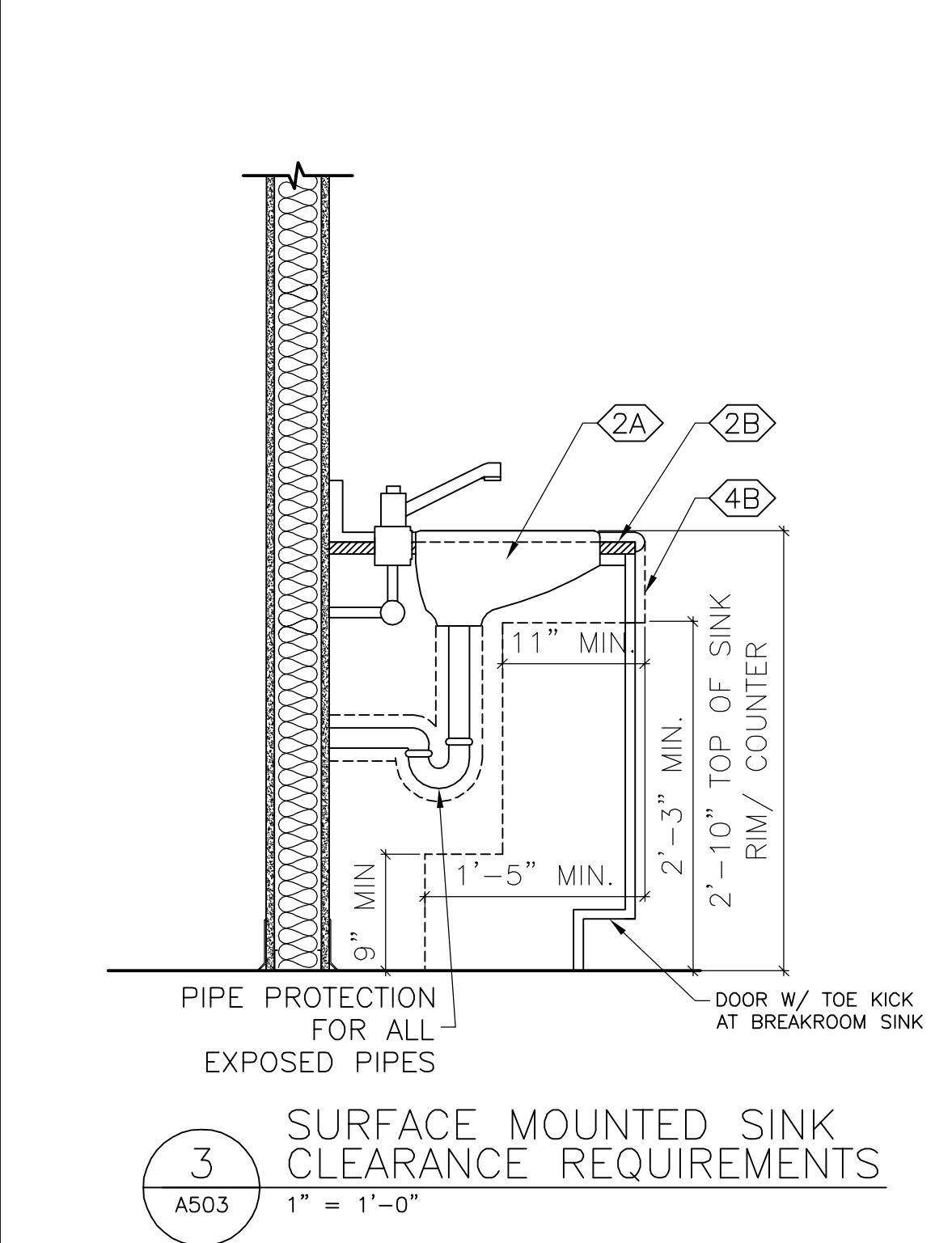
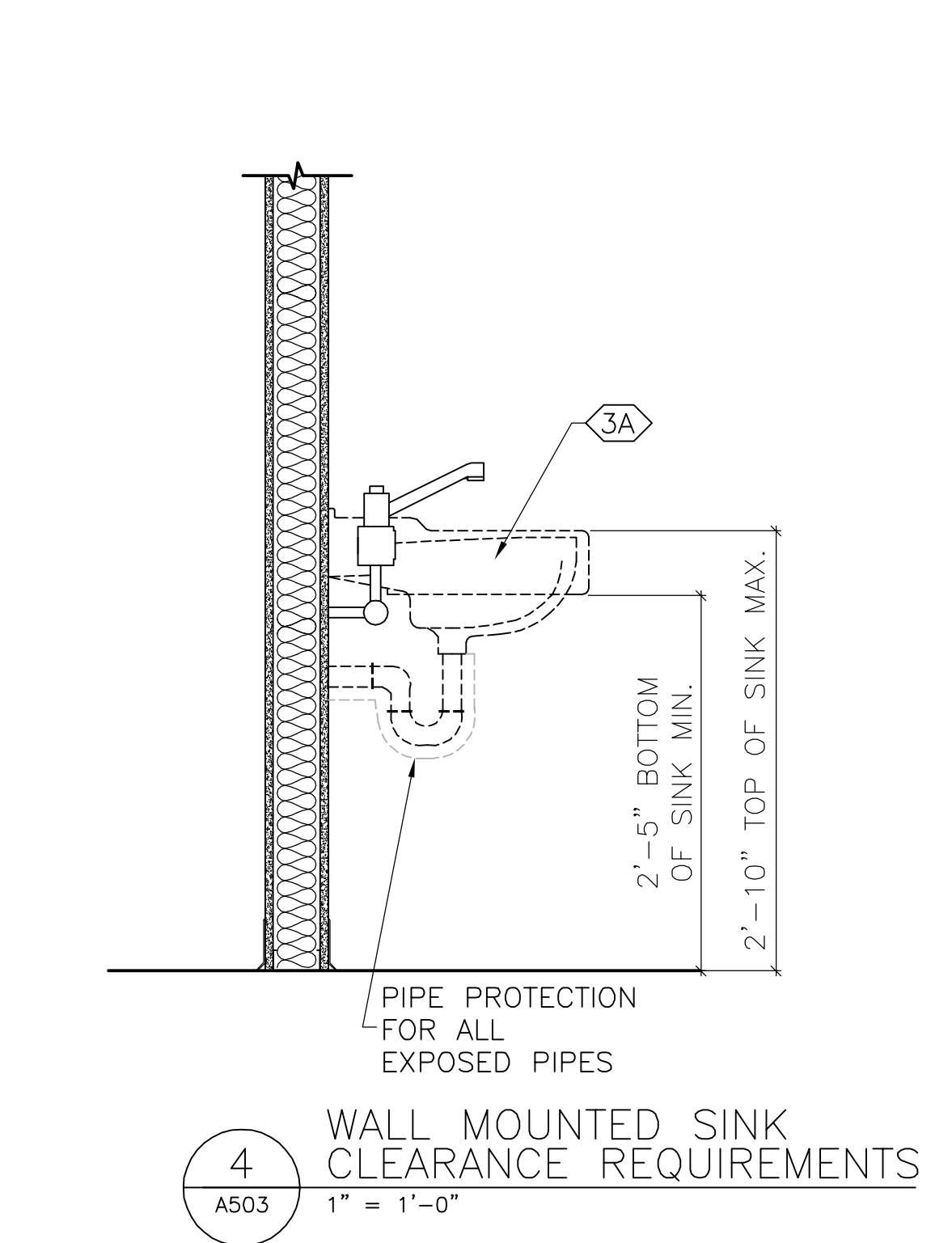
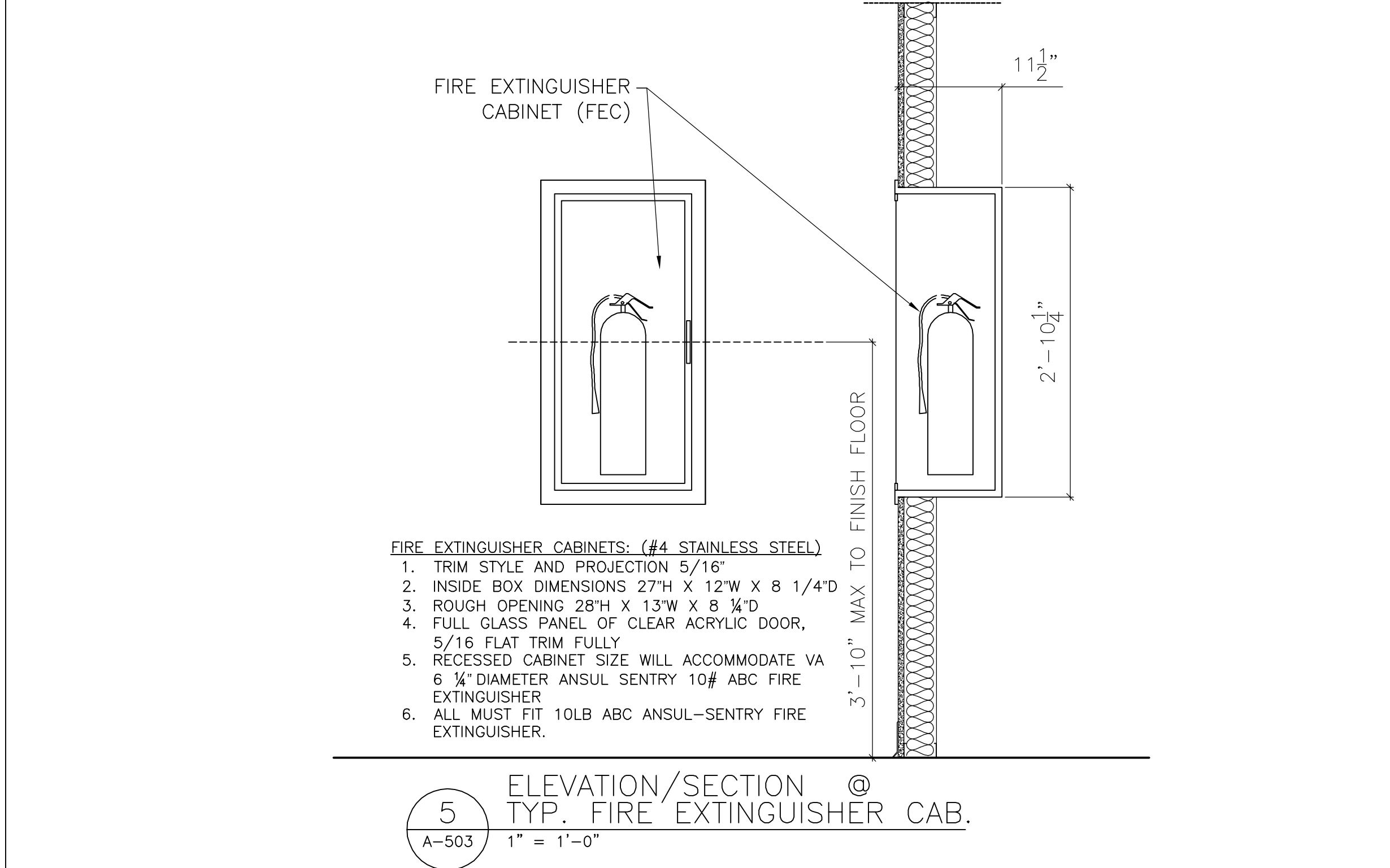
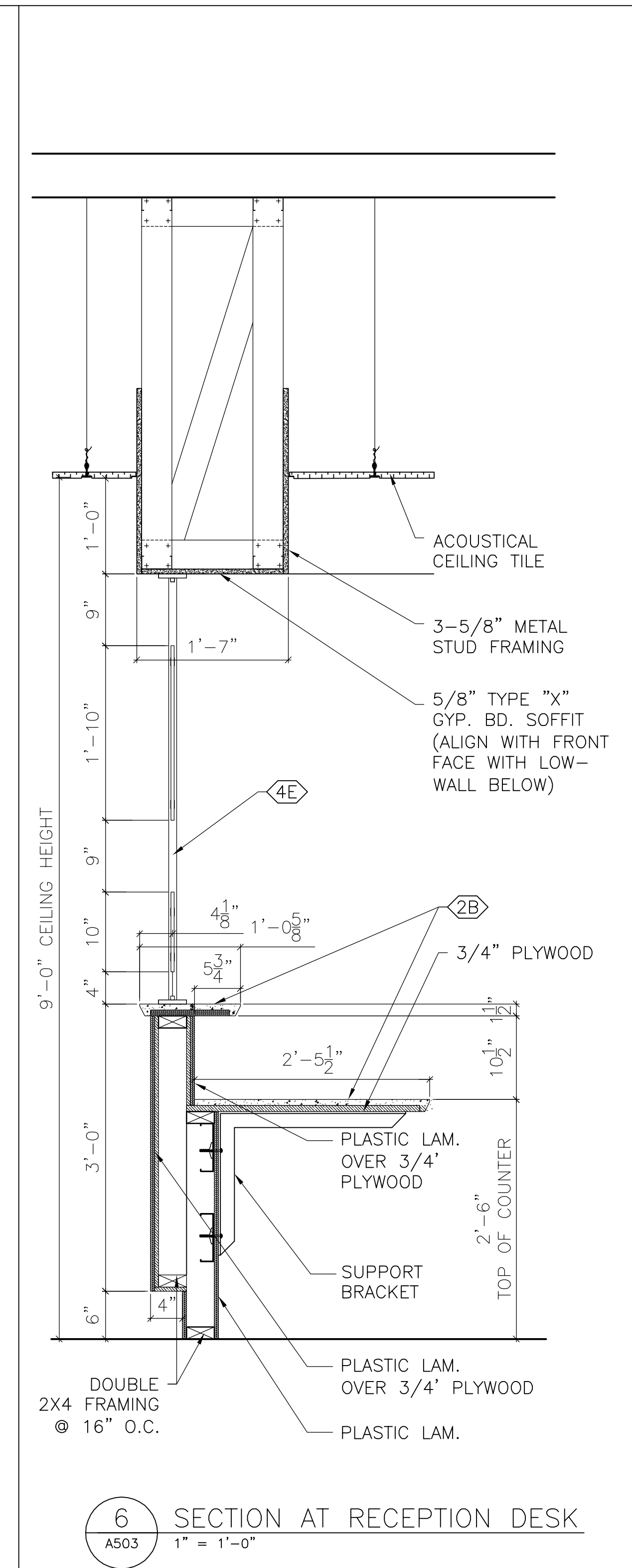
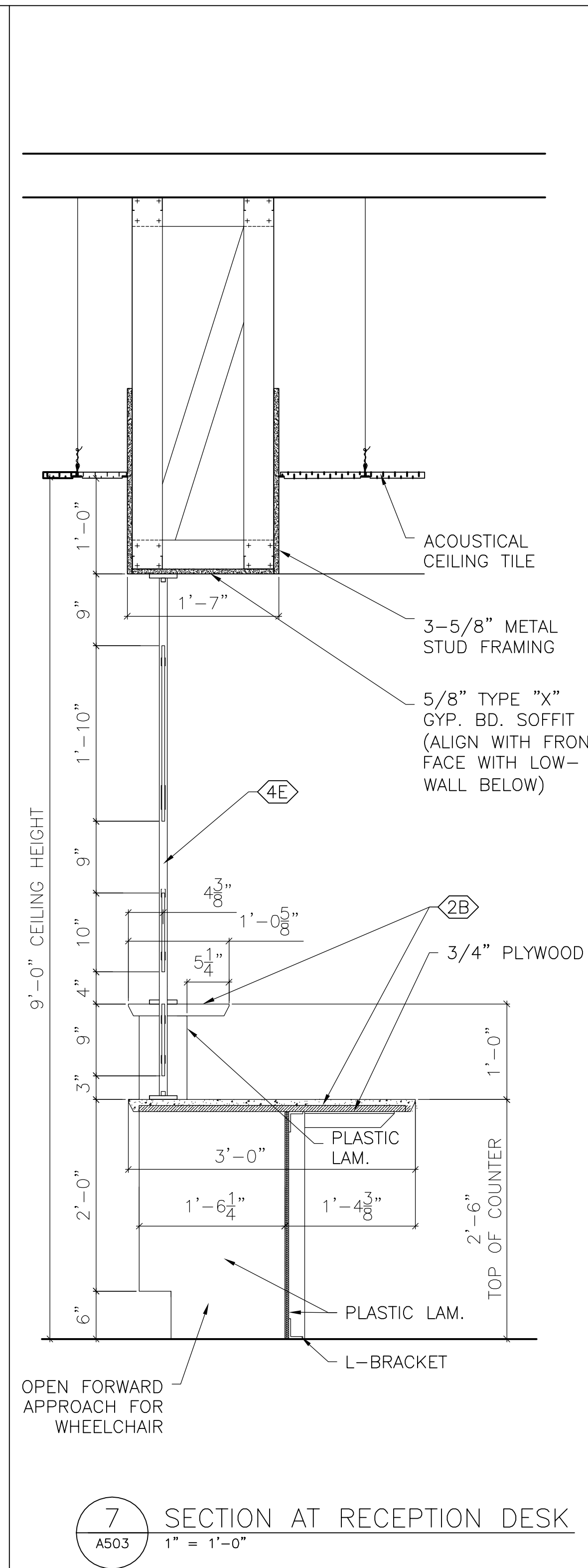
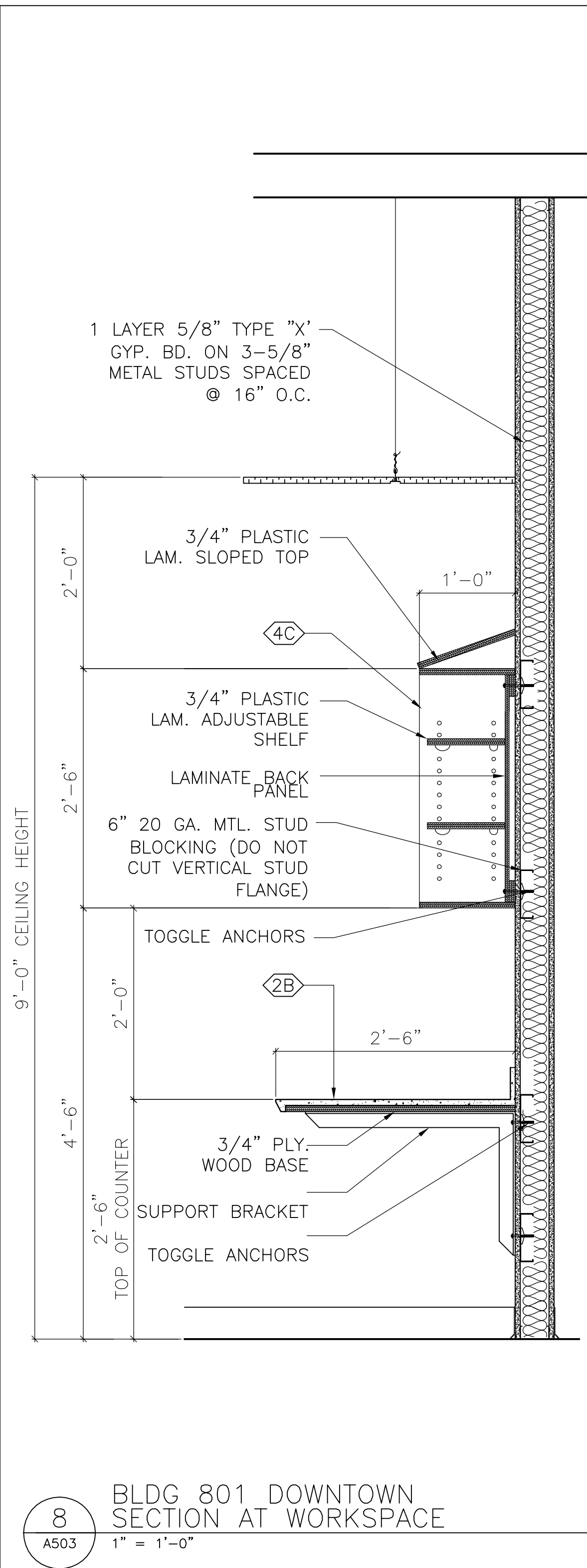
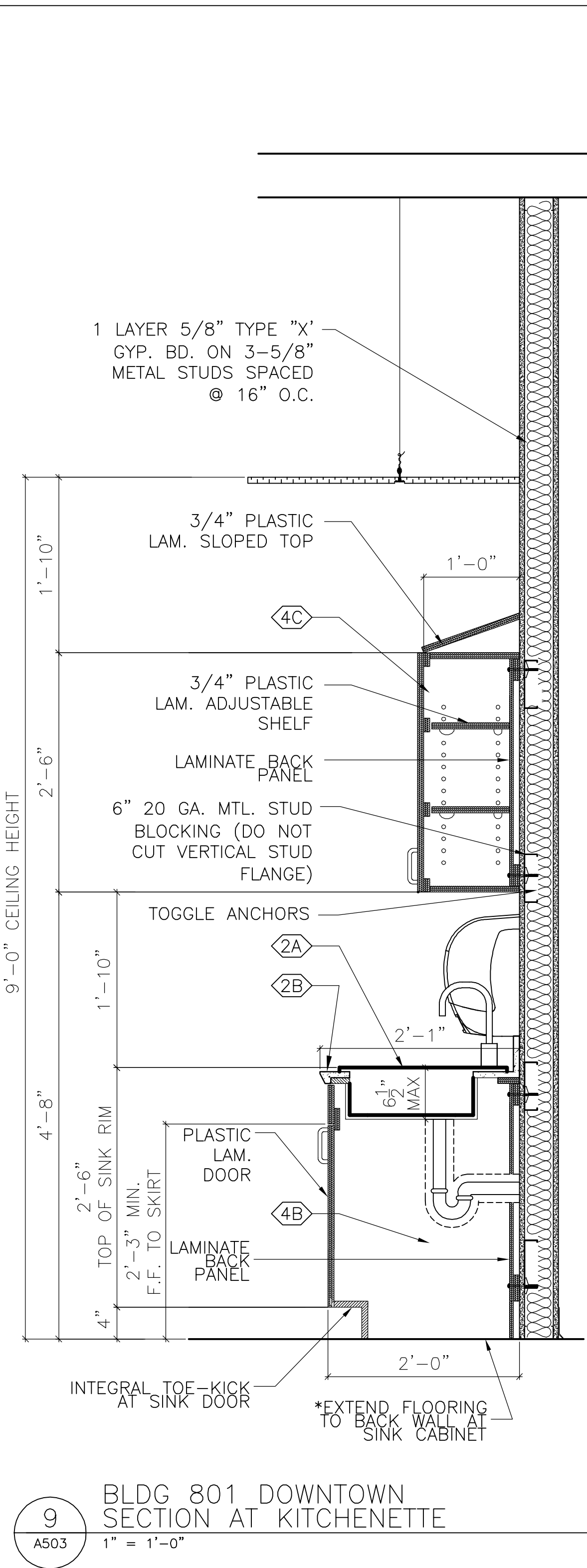
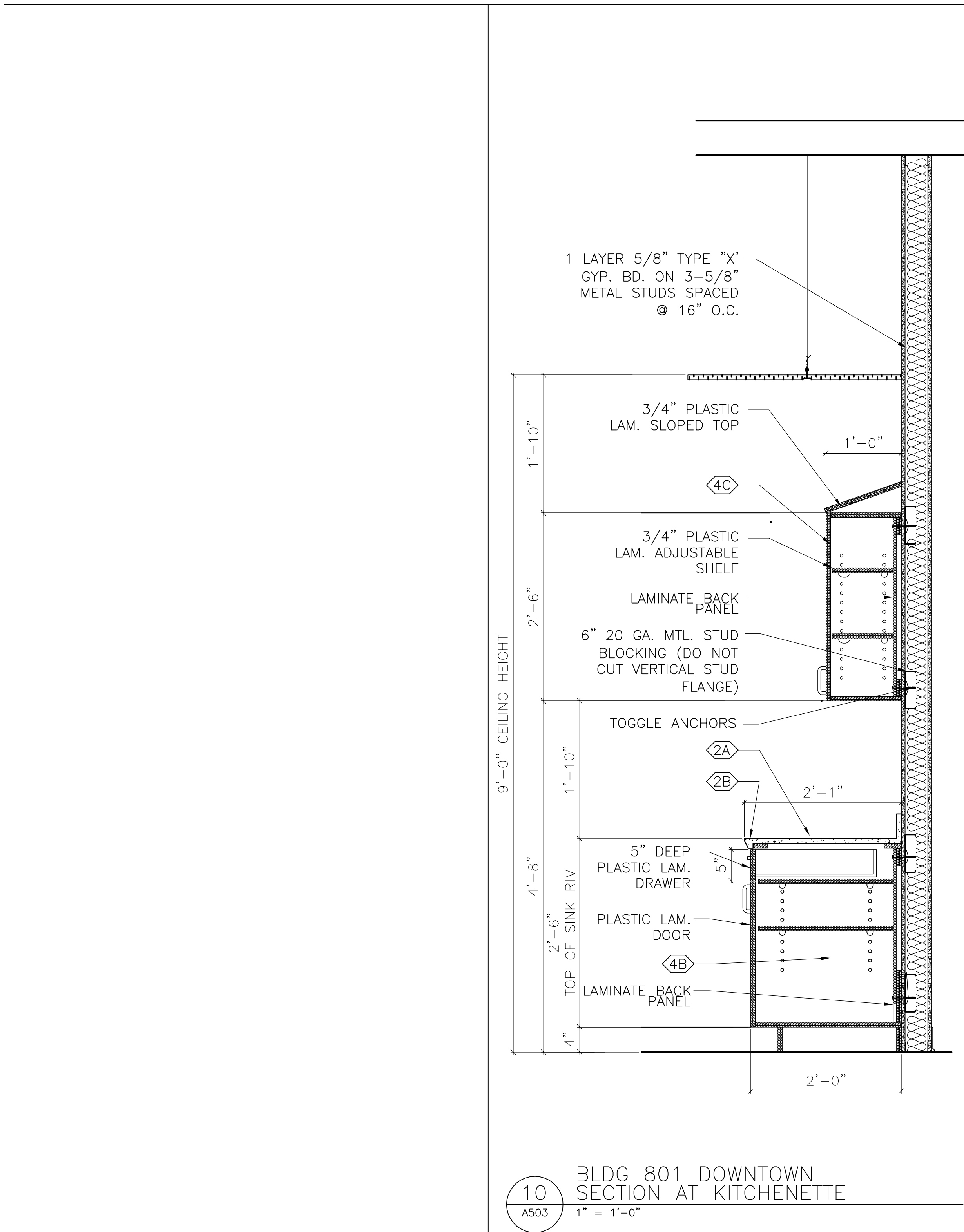
Office of Facilities Management

Department of Veterans Affairs

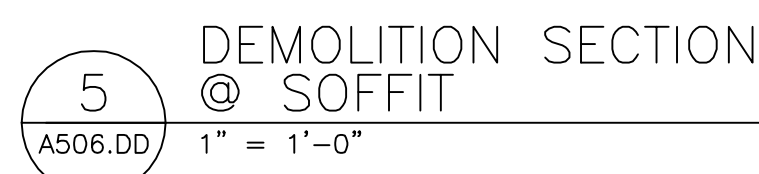
0
6
12
18
24
30
36
42
48
54
60
66
72
78
84
90
96
102
108
114
120
126
132
138
144
150
156
162
168
174
180
186
192
198
204
210
216
222
228
234
240
246
252
258
264
270
276
282
288
294
300
306
312
318
324
330
336
342
348
354
360
366
372
378
384
390
396
402
408
414
420
426
432
438
444
450
456
462
468
474
480
486
492
498
504
510
516
522
528
534
540
546
552
558
564
570
576
582
588
594
600
606
612
618
624
630
636
642
648
654
660
666
672
678
684
690
696
702
708
714
720
726
732
738
744
750
756
762
768
774
780
786
792
798
804
810
816
822
828
834
840
846
852
858
864
870
876
882
888
894
900
906
912
918
924
930
936
942
948
954
960
966
972
978
984
990
996
1000

A
B
C
D
E
F


three inches = one foot
one and one-half inches = one foot
one inch = one foot
three-quarters inch = one foot
one-half inch = one foot
three-eighths inch = one foot
one-quarter inch = one foot
one-eighth inch = one foot



Revisions		Date	ENGINEERS:		Professional Stamp/Seal	ARCHITECT:	Drawing Title		SECURITY ENHANCEMENTS		Date	Office of Facilities Management	
			MCE MILLS-CONOLY ENGINEERING, P.C.		WHORTON ENGINEERING, INC. HVAC - PLUMBING - PROCESS CONTROL	Wesseldyk + Associates Architecture Planning Consulting	INTERIOR ELEVATIONS, SECTIONS AND DETAILS		AUGUSTA VAMC, AUGUSTA, GA		01-23-2013 FINAL	Office of Facilities Management	
			8218 Old Federal Road Montgomery, AL 36117 TELEPHONE: (334) 270-0010		25 SUMMERALL GATE ROAD ANNISTON, ALABAMA 36005 PH 256/820-9897	1465 Northside Drive N.W. Suite 215 Atlanta, GA 30318 ph: 404-855-7923	Approved		Building No. BLDGS 110 + 801		509-12-106	Department of Veterans Affairs	
			FAX: (334) 270-0040		FAX 256/820-9896		Approved		Scale 1" = 1'-0"			Dwgs. 34 of 143	
							Approved		Location BLDG 110 UPTOWN (UD) BLDG 801 DOWNTOWN (DD)		AUGUSTA, GA	Dwgs. 34 of 143	

 Department of
Veterans Affairs

ENGINEERS:

MCE  **MILLS-CONOLLY
ENGINEERING, P.C.**

8228 Old Federal Road
TELEPHONE: (334) 270-0010

Montgomery, AL 36117
FAX: (334) 270-0040

WHORTON ENGINEERING, INC.


HVAC — PLUMBING — PROCESS CONTROL

25 SUMMERALL GATE ROAD
PH 256/820-9887

ANNISTON, ALABAMA 36605
FAX 256/820-9896

ARCHITECT:
Wesseldyk + Associates
Architecture
Planning
Consulting
1465 Northside Drive N.W.
Suite 215
Atlanta, GA 30318
ph: 404-855-7923

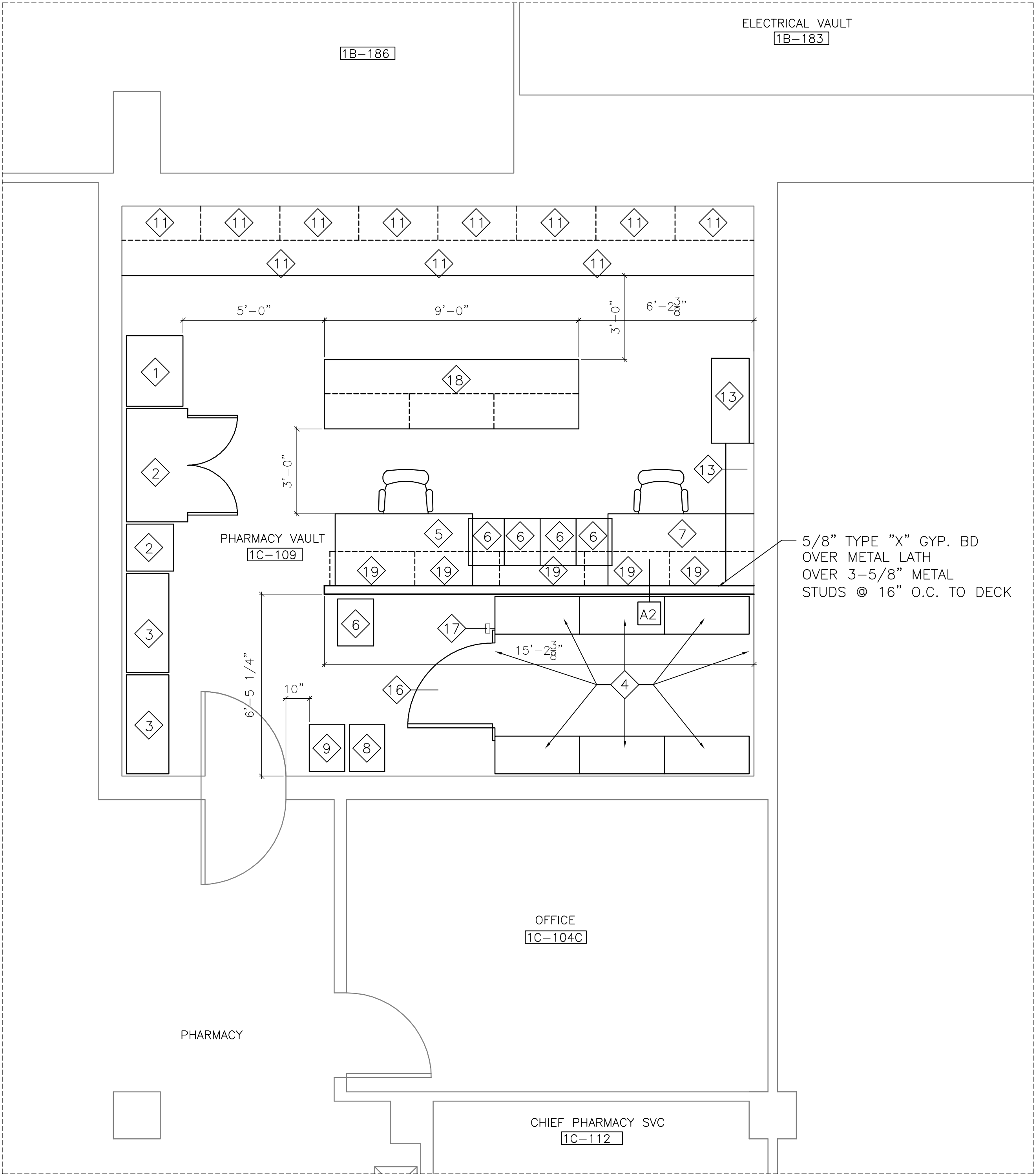


Drawing Title ADMIN. OFFICE PLANS, AND SECTIONS-BLDG 801 DOWNTOWN		SECURITY ENHANCEMENTS AUGUSTA VAMC, AUGUSTA, GA		Date 01-23-2013 FINAL	Office of Facilities Management  Department of Veterans Affairs
Approved	Approved	Building No. BLDGs 110 + 801	Scale 1/2" = 1'-0" 1" = 1'-0"	Drawn/Checked MDB	
Approved	Approved	Location BLDG 110 UPTOWN (UP) BLDG 801 DOWNTOWN (DN)		DWTG NO. A506.DD Dwg. 37 of 143	
		AUGUSTA, GA			

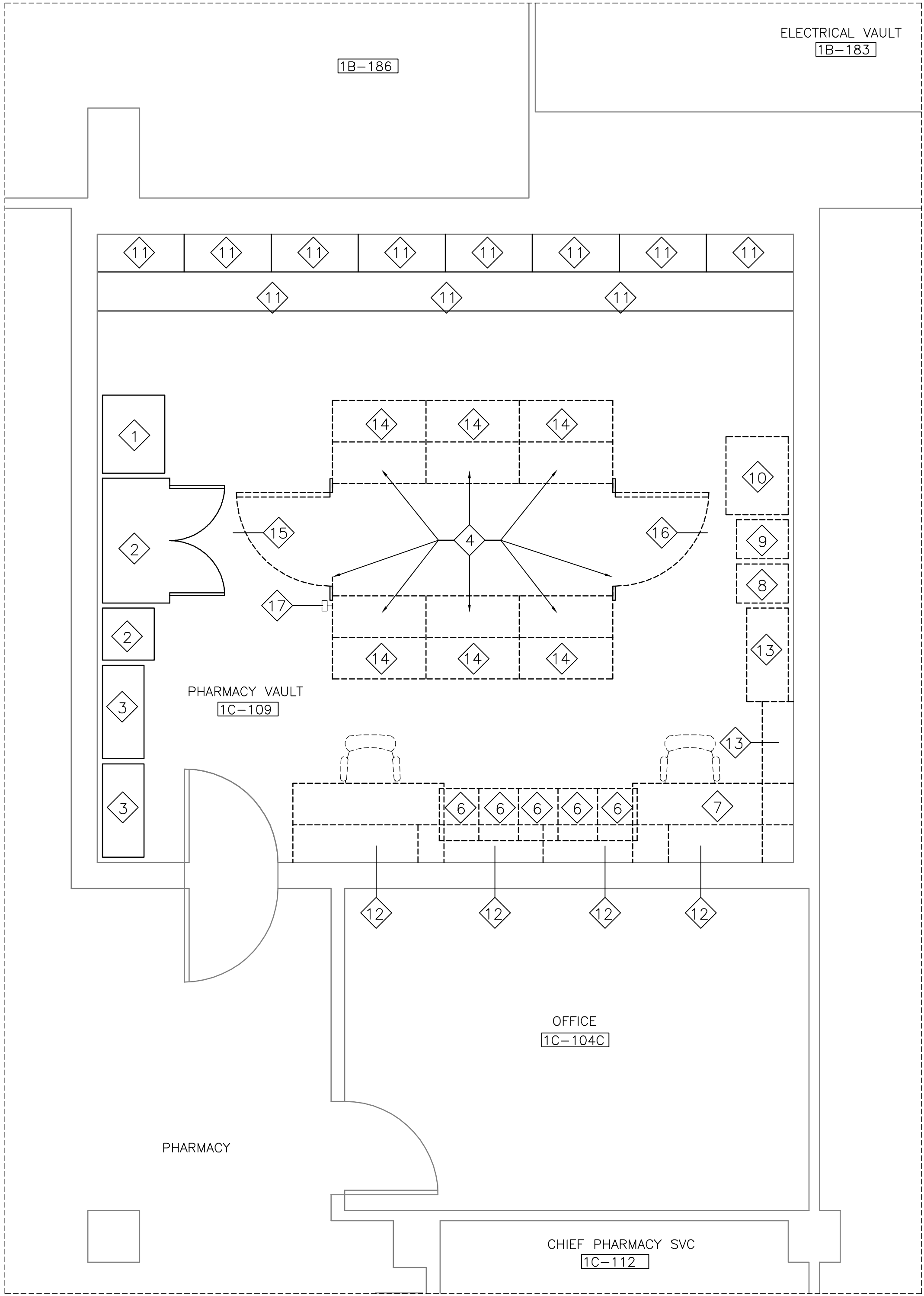
*U.S. GOVERNMENT PRINTING OFFICE: 1983-400-2

A
three inches = one foot
B
one and one-half inches = one foot
C
one inch = one foot
D
three-quarters inch = one foot
E
one-half inch = one foot
F
three-eighths inch = one foot
one-quarter inch = one foot
one-eighth inch = one foot

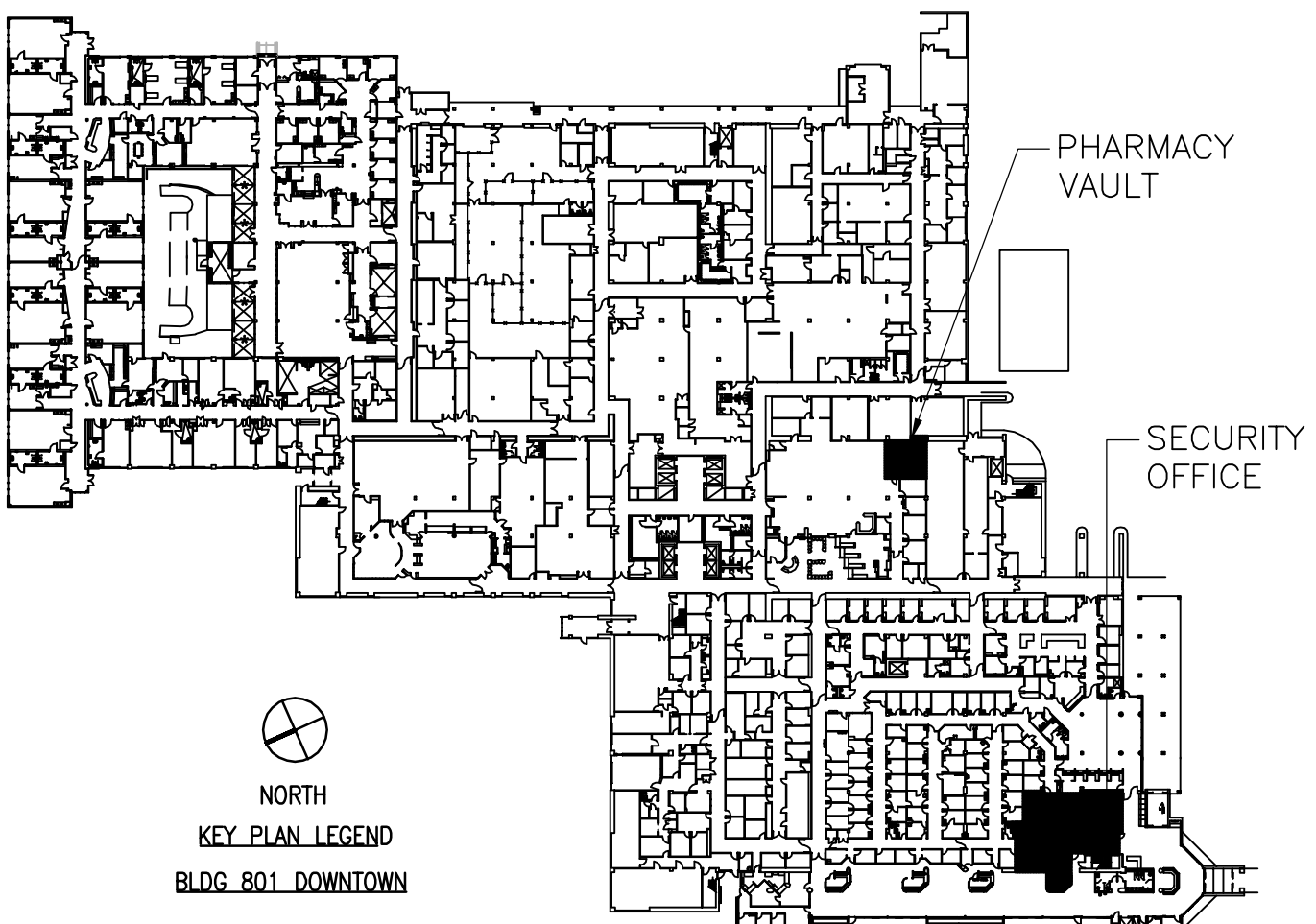
PHARMACY VAULT EQUIPMENT LEGEND	
1	EXISTING REFRIGERATOR TO REMAIN
2	EXISTING PYXIS SYSTEM CABINETS TO REMAIN
3	EXISTING METAL SHELF UNIT TO REMAIN
4	EXISTING CAGE WITH KEY PAD LOCK TO BE RELOCATED
5	EXISTING WORKSTATION TO BE RELOCATED
6	EXISTING PEDESTAL FILE CABINETS TO BE RELOCATED
7	EXISTING WORKSTATION TO BE RELOCATED
8	EXISTING 15" 5-DRAWER FILE CABINET TO BE RELOCATED
9	EXISTING 18" 5-DRAWER FILE CABINET TO BE RELOCATED
10	EXISTING REFRIGERATOR TO BE REMOVED
11	EXISTING BASE AND WALL CABINET TO REMAIN
12	EXISTING 48" WIDE METAL WALL CABINET TO BE REMOVED
13	EXISTING METAL SHELF UNIT AND ATTACHED COUNTER TO BE RELOCATED
14	EXISTING METAL SHELF UNITS TO BE UNBOLTED FROM CAGE AND REMOVED
15	CAGE DOOR TO BE REMOVED
16	CAGE DOOR TO BE RELOCATED
17	KEY PAD TO BE RELOCATED
18	METAL BASE CABINETS, COUNTERTOP AND WALL SHELVING UNITS TO BE FURNISHED BY THE VA
19	36" WIDE BY 14-1/2" DEEP OPEN METAL SHELVING WALL CABINETS TO BE FURNISHED BY THE VA



2 PHARMACY VAULT PLAN
BLDG 801 DOWNTOWN (DD)
A508.DD 3/8" = 1'-0"



1 PHARMACY VAULT DEMOLITION PLAN
BLDG 801 DOWNTOWN (DD)
A508.DD 3/8" = 1'-0"



RELEASED FOR CONSTRUCTION
100% SPRINKLERED

Revisions	Date

ENGINEERS:
MCE MILLS-CONOLY ENGINEERING, P.C.
8218 Old Federal Road
TELEPHONE: (334) 270-0010
Montgomery, AL 36117
FAX: (334) 270-0040

WHORTON ENGINEERING, INC.
HVAC - PLUMBING - PROCESS CONTROL
25 SUMMERALL GATE ROAD
PH 256/820-9897
ANNISTON, ALABAMA 36205
FAX 256/820-9896

Professional Stamp/Seal
STATE OF GEORGIA
PHILIP RICHARD MASSEY
D1-23-13
REGISTERED ARCHITECT

ARCHITECT:
Wesseldyk + Associates
Architecture
Planning
Consulting
1465 Northside Drive N.W.
Suite 215
Atlanta, GA 30318
ph: 404-855-7923



Drawing Title
PHARMACY VAULT PLANS AND ELEVATIONS, -BLDG 801 (DD)
Approved: _____
Approved: _____

**SECURITY ENHANCEMENTS
AUGUSTA VAMC, AUGUSTA, GA**
Building No.
BLDG 110 + 801
Scale
3/8" = 1'-0"
Drawn/Checked
MDB
Location
BLDG 110 UPTOWN (UD)
BLDG 801 DOWNTOWN (DD)
AUGUSTA, GA

Date
01-23-2013
FINAL
Project No.
509-12-106
DRAWING NO.
A508.DD
Dwg. 39 of 143

**Office of
Facilities
Management**
 **Department of
Veterans Affairs**