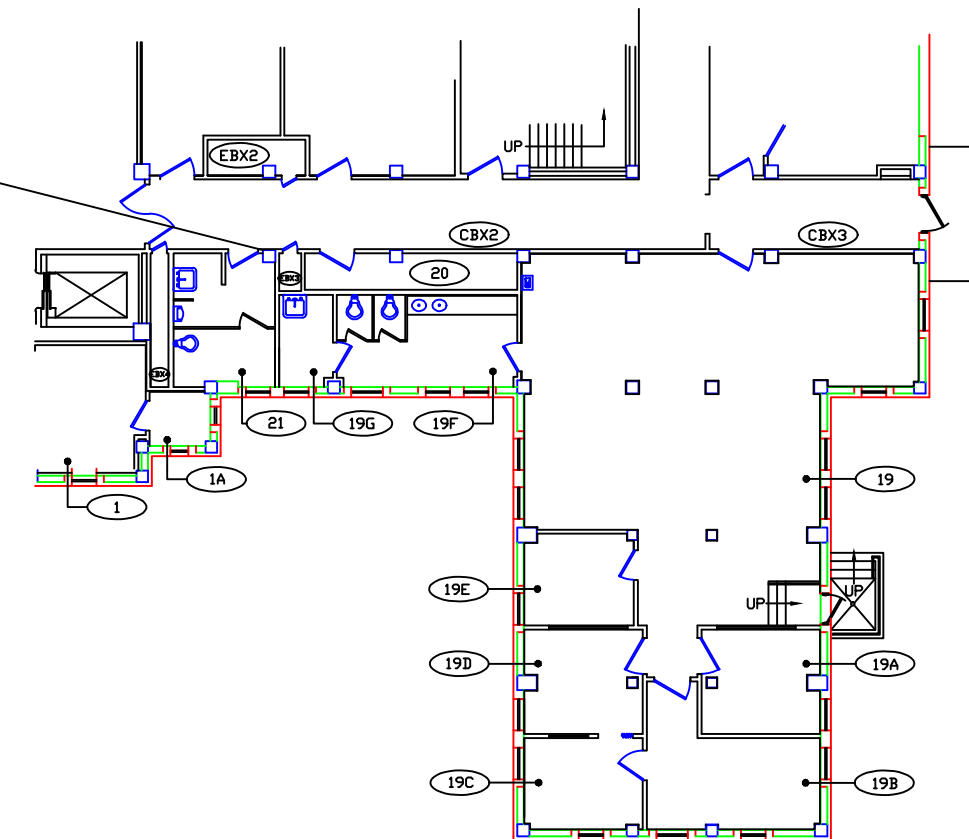


1 2 3 4 5 6 7 8 9 11 12 13 14 15 16 17 18 19

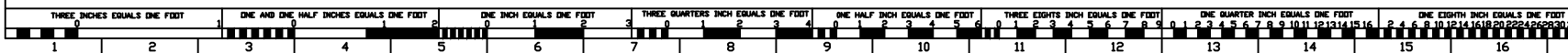
Install Low Energy Automatic Power Door Operator Bldg 7 room 21. Door shall receive 24V electric strike operated by the power door operator and wireless activating push buttons with push plates. Exact button plate location will be determined by COR. All power door operator finishes shall be dark bronze anodize aluminum. All installations shall meet Uniform Federal Accessibility Standards and ANSI A156.19 Key operated electric switch shall deactivate power door operator to achieve effective locking function on hallway side push plate.

ELECTRIC KEY SWITCH, Double pole-single throw, compatible to a mortise cylinder that will accept an interchangeable Best 7 pin core. Switch lock action: Maintained (off-on) Horsepower rating: 1 HP @ 125-250 VAC or VDC. All wiring and conduit runs shall be concealed. All branch circuits shall be connected to Emergency Power.



BUILDING 7
BASEMENT FLOOR PLAN

SCALE: 1/8" = 1'-0"



NO.		DATE	DESCRIPTION
REVISIONS			
SHEET TITLE			
BLDG. NO. PROJECT TITLE			
7-G			
DRAWN	JD	CHECKED	DATE 1/97
APPROVED		CHIEF, ENGINEERING SERVICE	DRAWING NUMBER
APPROVED		DIRECTOR, V.A.M.C. CANANDAIGUA	DATE OF PROJECT NUMBER
V.A. MEDICAL CENTER			
CANANDAIGUA, NY 14424			