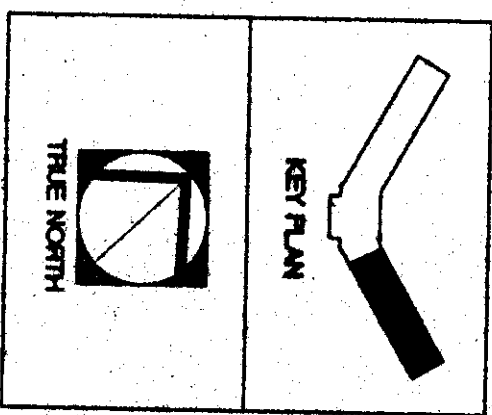


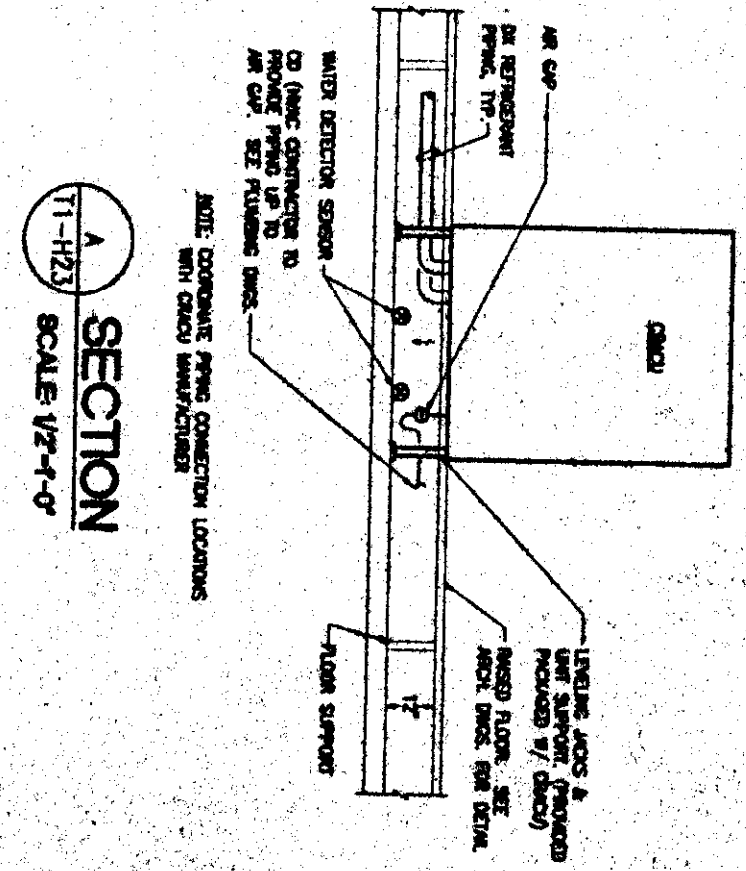
PARTIAL THIRD FLOOR PLAN SCALE 1/8"=1'-0"

- LEGEND:
1. PROVIDE SLOTTED GRILLE AT TRANSFER DUCTS. SHOW NOSE AND FULL RISE. GRILLE PATTERNS (SEE ARCH. DMS. FOR LOCATION OF FULL RISE PATTERNS).
 2. PROVIDE FIVE QUARTER AT TRANSFER DUCTS. PROVIDING FIRE RATED PARTITION.
 3. PROVIDE ONE (1) PREPARED FLOOR BRISTLES WITH AUTOMATICALLY RETRACTING COMPARTMENT (C-1000). AND ONE EACH FLOOR BRISTLE COMPARTMENT (C-1000). BRISTLES SHALL BE LOCATED AS REQUIRED TO PROVIDE AIRFLOW COOLING WITHOUT CREATING AIR NOT SPOTS UNDER THE SPACE.



ALL DIMENSIONS IN FEET & INCHES. 1/4" = 1'-0"

NO.	DESCRIPTION	QTY	UNIT	AMOUNT	REMARKS
1	1/2" DIA. BRISTLES	1	EA	1.00	
2	1/2" DIA. BRISTLES	1	EA	1.00	
3	1/2" DIA. BRISTLES	1	EA	1.00	
4	1/2" DIA. BRISTLES	1	EA	1.00	
5	1/2" DIA. BRISTLES	1	EA	1.00	
6	1/2" DIA. BRISTLES	1	EA	1.00	
7	1/2" DIA. BRISTLES	1	EA	1.00	
8	1/2" DIA. BRISTLES	1	EA	1.00	
9	1/2" DIA. BRISTLES	1	EA	1.00	
10	1/2" DIA. BRISTLES	1	EA	1.00	
11	1/2" DIA. BRISTLES	1	EA	1.00	
12	1/2" DIA. BRISTLES	1	EA	1.00	
13	1/2" DIA. BRISTLES	1	EA	1.00	
14	1/2" DIA. BRISTLES	1	EA	1.00	
15	1/2" DIA. BRISTLES	1	EA	1.00	
16	1/2" DIA. BRISTLES	1	EA	1.00	
17	1/2" DIA. BRISTLES	1	EA	1.00	
18	1/2" DIA. BRISTLES	1	EA	1.00	
19	1/2" DIA. BRISTLES	1	EA	1.00	
20	1/2" DIA. BRISTLES	1	EA	1.00	
21	1/2" DIA. BRISTLES	1	EA	1.00	
22	1/2" DIA. BRISTLES	1	EA	1.00	
23	1/2" DIA. BRISTLES	1	EA	1.00	
24	1/2" DIA. BRISTLES	1	EA	1.00	
25	1/2" DIA. BRISTLES	1	EA	1.00	
26	1/2" DIA. BRISTLES	1	EA	1.00	
27	1/2" DIA. BRISTLES	1	EA	1.00	
28	1/2" DIA. BRISTLES	1	EA	1.00	
29	1/2" DIA. BRISTLES	1	EA	1.00	
30	1/2" DIA. BRISTLES	1	EA	1.00	
31	1/2" DIA. BRISTLES	1	EA	1.00	
32	1/2" DIA. BRISTLES	1	EA	1.00	
33	1/2" DIA. BRISTLES	1	EA	1.00	
34	1/2" DIA. BRISTLES	1	EA	1.00	
35	1/2" DIA. BRISTLES	1	EA	1.00	
36	1/2" DIA. BRISTLES	1	EA	1.00	
37	1/2" DIA. BRISTLES	1	EA	1.00	
38	1/2" DIA. BRISTLES	1	EA	1.00	
39	1/2" DIA. BRISTLES	1	EA	1.00	
40	1/2" DIA. BRISTLES	1	EA	1.00	
41	1/2" DIA. BRISTLES	1	EA	1.00	
42	1/2" DIA. BRISTLES	1	EA	1.00	
43	1/2" DIA. BRISTLES	1	EA	1.00	
44	1/2" DIA. BRISTLES	1	EA	1.00	
45	1/2" DIA. BRISTLES	1	EA	1.00	
46	1/2" DIA. BRISTLES	1	EA	1.00	
47	1/2" DIA. BRISTLES	1	EA	1.00	
48	1/2" DIA. BRISTLES	1	EA	1.00	
49	1/2" DIA. BRISTLES	1	EA	1.00	
50	1/2" DIA. BRISTLES	1	EA	1.00	
51	1/2" DIA. BRISTLES	1	EA	1.00	
52	1/2" DIA. BRISTLES	1	EA	1.00	
53	1/2" DIA. BRISTLES	1	EA	1.00	
54	1/2" DIA. BRISTLES	1	EA	1.00	
55	1/2" DIA. BRISTLES	1	EA	1.00	
56	1/2" DIA. BRISTLES	1	EA	1.00	
57	1/2" DIA. BRISTLES	1	EA	1.00	
58	1/2" DIA. BRISTLES	1	EA	1.00	
59	1/2" DIA. BRISTLES	1	EA	1.00	
60	1/2" DIA. BRISTLES	1	EA	1.00	
61	1/2" DIA. BRISTLES	1	EA	1.00	
62	1/2" DIA. BRISTLES	1	EA	1.00	
63	1/2" DIA. BRISTLES	1	EA	1.00	
64	1/2" DIA. BRISTLES	1	EA	1.00	
65	1/2" DIA. BRISTLES	1	EA	1.00	
66	1/2" DIA. BRISTLES	1	EA	1.00	
67	1/2" DIA. BRISTLES	1	EA	1.00	
68	1/2" DIA. BRISTLES	1	EA	1.00	
69	1/2" DIA. BRISTLES	1	EA	1.00	
70	1/2" DIA. BRISTLES	1	EA	1.00	
71	1/2" DIA. BRISTLES	1	EA	1.00	
72	1/2" DIA. BRISTLES	1	EA	1.00	
73	1/2" DIA. BRISTLES	1	EA	1.00	
74	1/2" DIA. BRISTLES	1	EA	1.00	
75	1/2" DIA. BRISTLES	1	EA	1.00	
76	1/2" DIA. BRISTLES	1	EA	1.00	
77	1/2" DIA. BRISTLES	1	EA	1.00	
78	1/2" DIA. BRISTLES	1	EA	1.00	
79	1/2" DIA. BRISTLES	1	EA	1.00	
80	1/2" DIA. BRISTLES	1	EA	1.00	
81	1/2" DIA. BRISTLES	1	EA	1.00	
82	1/2" DIA. BRISTLES	1	EA	1.00	
83	1/2" DIA. BRISTLES	1	EA	1.00	
84	1/2" DIA. BRISTLES	1	EA	1.00	
85	1/2" DIA. BRISTLES	1	EA	1.00	
86	1/2" DIA. BRISTLES	1	EA	1.00	
87	1/2" DIA. BRISTLES	1	EA	1.00	
88	1/2" DIA. BRISTLES	1	EA	1.00	
89	1/2" DIA. BRISTLES	1	EA	1.00	
90	1/2" DIA. BRISTLES	1	EA	1.00	
91	1/2" DIA. BRISTLES	1	EA	1.00	
92	1/2" DIA. BRISTLES	1	EA	1.00	
93	1/2" DIA. BRISTLES	1	EA	1.00	
94	1/2" DIA. BRISTLES	1	EA	1.00	
95	1/2" DIA. BRISTLES	1	EA	1.00	
96	1/2" DIA. BRISTLES	1	EA	1.00	
97	1/2" DIA. BRISTLES	1	EA	1.00	
98	1/2" DIA. BRISTLES	1	EA	1.00	
99	1/2" DIA. BRISTLES	1	EA	1.00	
100	1/2" DIA. BRISTLES	1	EA	1.00	



ARCHITECTS
HAWAII

1001 Shoup Street, Suite 200
Honolulu, Hawaii 96813
Tel: (808) 521-1234

PROJECT: PARTIAL THIRD FLOOR PLAN

DATE: 09/12/23

SCALE: 1/8"=1'-0"

1001 Shoup Street, Suite 200
Honolulu, Hawaii 96813
Tel: (808) 521-1234