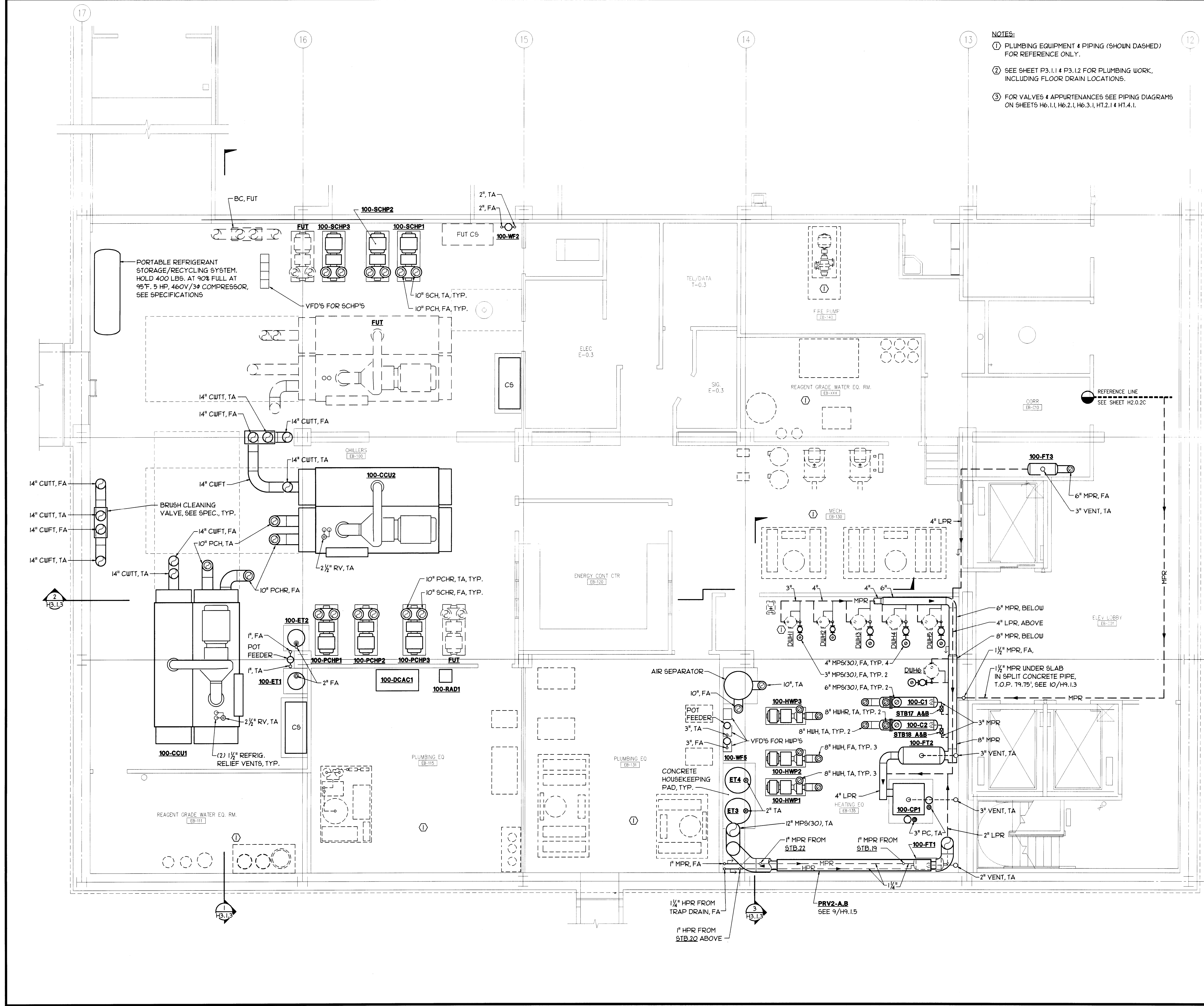


three inches = one foot
one and one-half inches = one foot
one inch = one foot
three-quarters inch = one foot
one-half inch = one foot
three-eighths inch = one foot
one-quarter inch = one foot
one-eighth inch = one foot
one-sixteenth inch = one foot



- NOTES:
- ① PLUMBING EQUIPMENT & PIPING (SHOWN DASHED) FOR REFERENCE ONLY.
 - ② SEE SHEET P3.1.1 & P3.1.2 FOR PLUMBING WORK, INCLUDING FLOOR DRAIN LOCATIONS.
 - ③ FOR VALVES & APPURTENANCES SEE PIPING DIAGRAMS ON SHEETS H6.1.1, H6.2.1, H6.3.1, H7.2.1 & H7.4.1.

Department of Veterans Affairs

Approved Project Director

ARCHITECT
The Ratcliff Architects
5656 Doyle Street
Emeryville, CA 94608
P.O. Box 1022
Berkeley, CA 94701
(510) 552-1972

ASSOCIATE ARCHITECT
Stone, Marracini and Patterson
One Market Plaza
Spear Street Tower, Suite 400
San Francisco, CA 94105
(415) 227-0100

CONSULTANTS
Structural Engineers
H.J. Degenkolb Associates
Mechanical Engineers
Capital Engineering Consultants, Inc.
Electrical Engineers
The Engineering Enterprise
Cost Estimator
Adamson Associates
Landscape Design/ Land Planning
Omni Lang Associates, Inc.
Civil Engineer
Sandis and Associates, Inc.
Elevator Consultant
Syks and Hennessy
Fire Protection
Rolf Jensen and Associates
Food Service Consultant
Cini-Little International, Inc.

Capital Engineering Consultants, Inc.
Sacramento, California
T.G.J.D. DESIGNER/DRAFTER
PROJECT NO.

KEY PLAN

RECORD DRAWINGS 8-14-98

Revisions	Date

Location: VA Medical Center
Palo Alto, CA

Project Title: REPLACE CLINICAL/ BED TOWER FOR SEISMIC CORRECTIONS

FULLY SPRINKLERED

TRA Project No.	Checked	Drawn
93007	TGJ	DA

Drawing Title: CHILLED WATER PLANT - LOWER LEVEL PLAN

Scale 1/4" = 1'-0"

VA Project No.	Building Number
640-042G	100

Date: 2 MAY 1998

DRAWING NO.
H3.1.1

Dwg. of