

\\Vhapal\sc7\cad_files\CAD_Projects_2012\PA6\640.13-106P.100.PAD.Replace_HW_Exch.0b.000\640.13-106P.100.MP601.PAD.Replace_Hot_Water_Exch.Flow_Diag.eb.135.dwg 12-13-12 01:21:53 PM vhapal\ee6

[illegible]

1 WATER FILTERS - CLOSED LOOP HYDRONIC SYSTEMS

CONSULTANTS:

ARCHITECT/ENGINEERS:

Drawing Title

Project Title
REPLACE HEATING HOT
WATER EXCHANGERS IN
BUILDING 100

Project Number
640-13-106FBuilding Number
100

Drawing Number

**Office of
Construction
and Facilities
Management**

Approved Project Director
LEE
CONTRACTING OFFICER'S TECHNICAL REPRESENTATIVE
VAPAHOS PLANNING AND ENGINEERING

Location	PAD	PALO ALTO
Date		

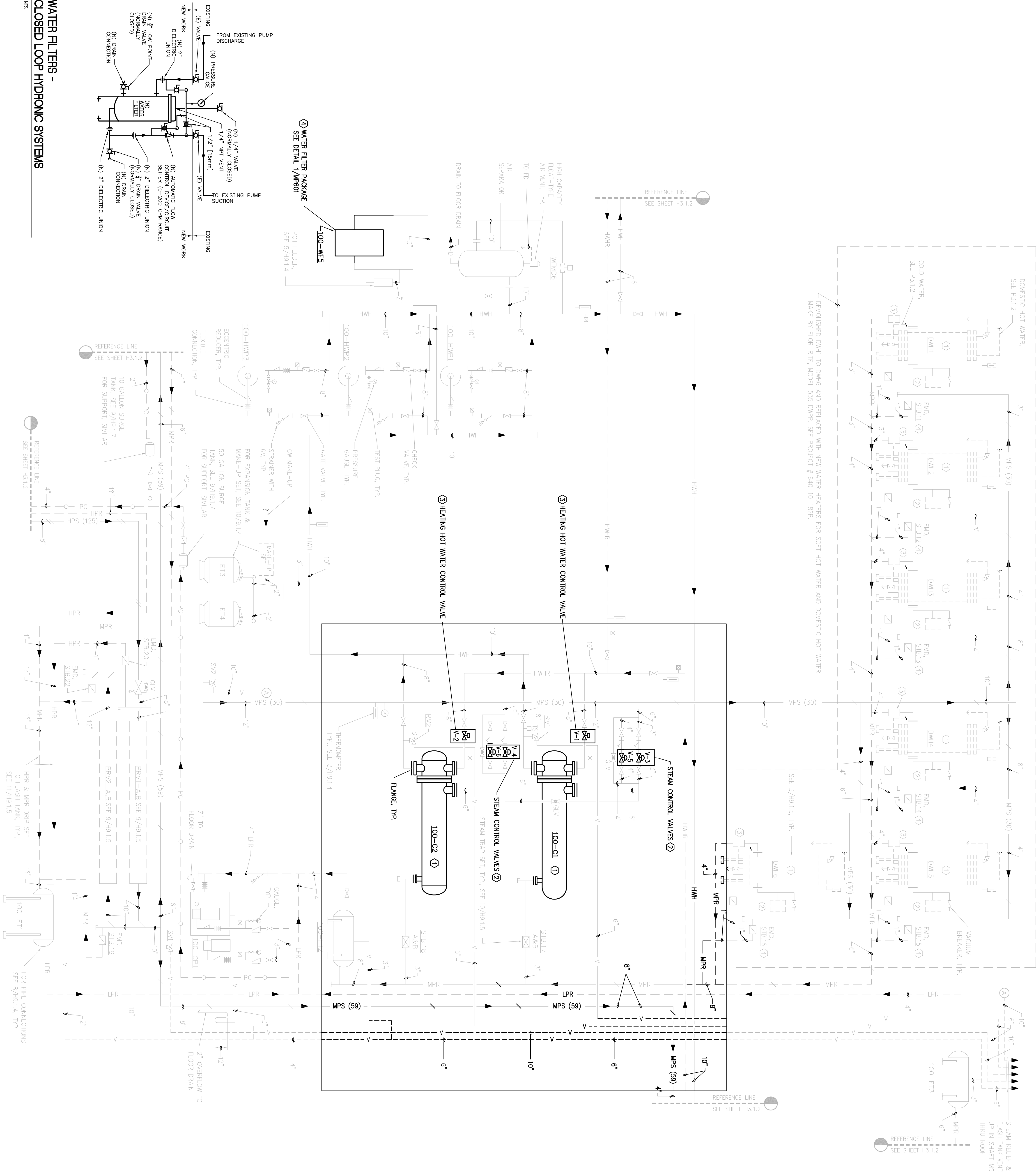
Checked	Dra
---------	-----

Drawing Number	MP-6
A	
m	

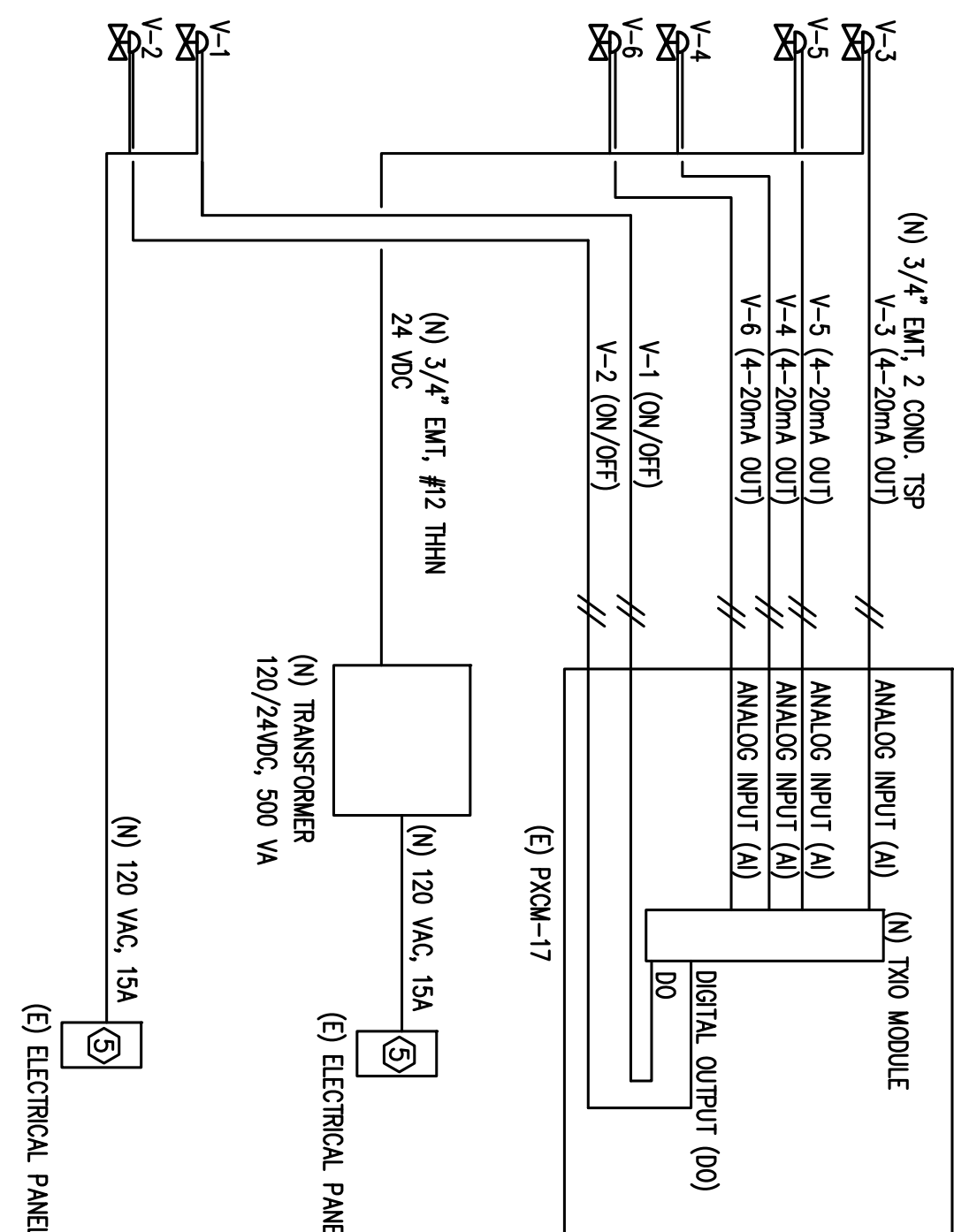
Drawing Number
MP-601

Management

Department of



2 CONCEPTUAL CONTROL SIGNAL AND WIRING DIAGRAM



- ① **REPLACE EXISTING HEATING HOT WATER EXCHANGERS WITH NEW HEAT EXCHANGERS.**
SEE SCHEDULE ON 8-101 AND SPECIFICATIONS FOR DETAIL REQUIREMENTS.
- ② **REPLACE EXISTING PNEUMATIC ACTIVATED STEAM CONTROL VALVES WITH NEW ELECTRIC ACTIVATED STEAM CONTROL VALVES.** BE-PROGRAM TO EXISTING DDC SYSTEM. SEE DETAIL 2/6-100 FOR CONCEPTUAL CONTROL SIGNAL AND WIRING DIAGRAM.
- ③ **REPLACE EXISTING PNEUMATIC ACTIVATED HEATING HOT WATER CONTROL VALVES WITH NEW ELECTRIC ACTIVATED CONTROL VALVES.** BE-PROGRAM TO EXISTING DDC SYSTEM. SEE DETAIL 2/6-100 FOR CONCEPTUAL CONTROL SIGNAL AND WIRING DIAGRAM.
- ④ **REPLACE EXISTING HEATING HOT WATER FILTER PACKAGE WITH NEW WATER FILTER PACKAGE AND SUPPORT COMPONENTS.**
- ⑤ **CONTRACTOR TO FIELD VERIFY THE NEAREST EXISTING ELECTRICAL PANEL THAT IS TIED TO EMERGENCY BACKUP SOURCE.**