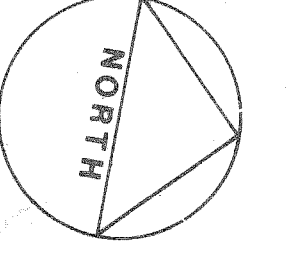
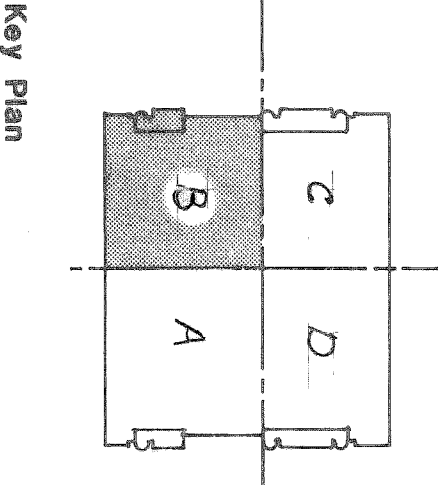


AS BUILT	6/17/94
Revisions	Date

RECORD DRAWING  
CORRECTED ON BASIS OF DATA  
FURNISHED BY THE RESIDENT ENGINEER



RTKL/CSD/HENRY ADAMS (L.V.)  
ARCHITECTS AND ENGINEERS  
400 E. PRATT STREET  
BALTIMORE, MD 21202

Drawing Title  
7TH FLOOR PLAN  
AREA B  
PLUMBING

Approved Project Director  
*Robert J. Smith*

Scale  
1/8" = 1'-0"

Checked  
1

Location  
WAMC - BALTIMORE, MD.

DATE  
9/1/88

PROJECT NO.  
511-C01D

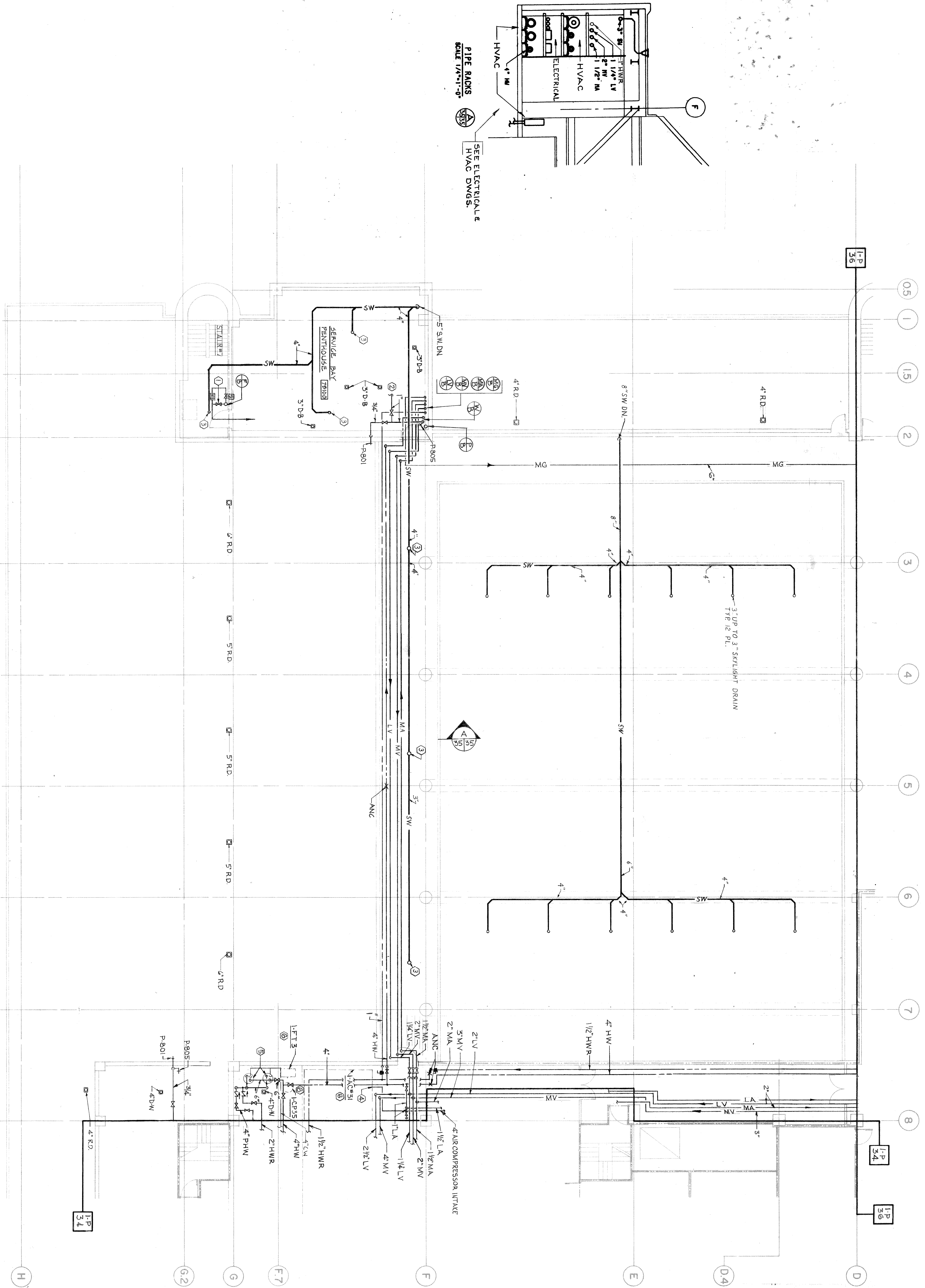
DRAWING NO.  
I-P35

DATE  
6/7/94

Veterans Administration

FULLY SPRINKLERED

8-0-1-1194



- DRAWING NOTES: (APPLY TO THIS DRAWING ONLY)
- 1. SEE ARCH. DRWG. I-74 FOR ROOF AND SKYLIGHT DRAIN LOCATIONS.
  - SPECIAL NOTES: (APPLY TO THIS DRAWING ONLY)
  - 1. 2-1/2" F.W. AT FLOOR LANDING. LOCATE VALVE 60" A.F.F.
  - 2. TO EXPANSION TANK. SEE H-SERIES DRAWING.
  - 3. 3" UP TO 3" RD.
  - 4. CONNECT TO PLUMB.
  - 5. HOT WATER GENERATOR.
  - 6. HVAC EQUIPMENT. SEE H-SERIES DRAWINGS.