

SITE LEGEND:

PROPOSED	
BLDG SETBACK LINE	SHRUB
CABLE TV	CLEANOUT
CONTOURS (MAJOR)	ENDWALL
CONTOURS (MINOR)	FIRE HYDRANT
DAT	GAS VALVE
EASEMENT	INLET
ELE	LIGHT
ELEC-TEL-COM	STORM MANHOLE
FENCE LINE	SAN MANHOLE
FM	MARKER
GAS	METER - E, G, W
OHE	PERC HOLE
PROPERTY LINE	POLE
RIGHT-OF-WAY	SIGN
ROAD CENTERLINE	TESTHOLE
SAN	TREE
SANITARY LINE	VENT
SPOT ELEVATIONS	WATER VALVE
STORM SEWER	YARD DRAIN
TEL	
TREE LINE	
WL	
WATER LINE	
WATER LINE LATERAL	
DEPRESSED CURB	

SITE PHASING REQUIREMENTS

CRANE PLACEMENT

- CONTRACTOR TO DETERMINE LOCATION AND SIZE OF CRANE REQUIRED TO EXECUTE WORK.
- OVERHEAD PROTECTION OF ANY PEDESTRIAN PATHWAYS UNDER THE CRANE SWING IS REQUIRED.
- CRANE PLACEMENT MUST NOT RESTRICT VEHICULAR TRAFFIC FLOW. IF CRANE LIFTS ARE OVER ROADWAYS PROVIDE FLAGMEN TO CONTROL TRAFFIC DURING LIFTS.
- CRANE LOCATION AND OPERATIONAL PROCEDURES MUST BE REVIEWED WITH AND APPROVED BY THE OWNER.

PEDESTRIAN ACCESS

- MAINTAIN PEDESTRIAN ACCESS TO SECOND FLOOR ENTRANCE AT ALL TIMES DURING CONSTRUCTION EXCEPT FOR BRIEF PERIODS DURING FINISH WORK OF EXISTING ENTRY AREA.
- CONTRACTOR MUST PROVIDE A PROTECTED, WELL MARKED, LIGHTED (40FC MINIMUM) PATHWAY TO ENTRY.
- PROTECTION IS TO SEPARATE CONSTRUCTION ZONE FROM PEDESTRIAN TRAFFIC WITH SOLID PARTITIONS AND CEILINGS.
- PLAN OF PROTECTION MUST BE REVIEWED WITH AND APPROVED BY OWNER.

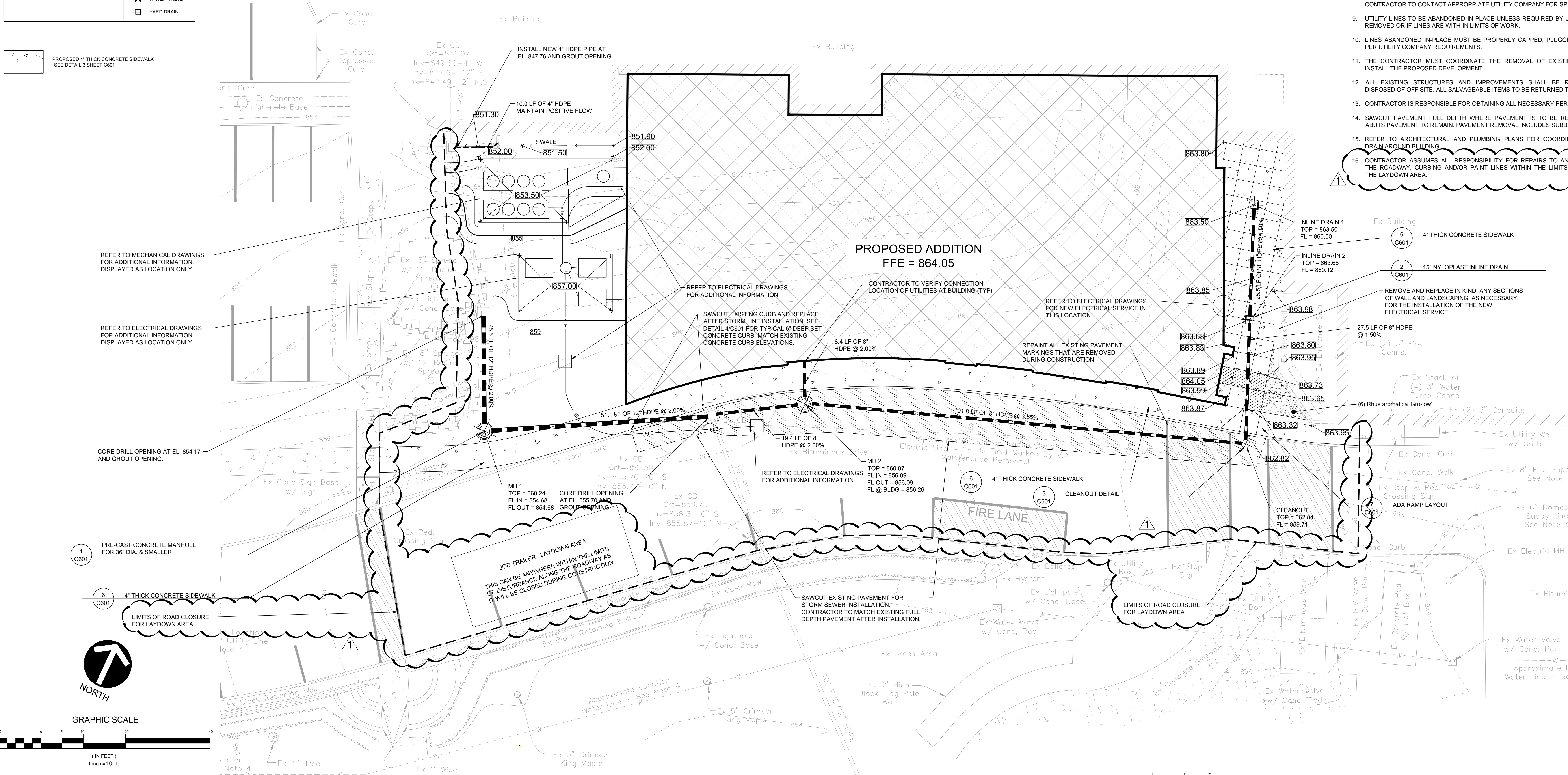
ROADWAY ACCESS

- THE ROADWAY IN FRONT OF THE PROPOSED ADDITION SHALL BE CLOSED DURING CONSTRUCTION.
- IF ROADWAY NEEDS TO BE RESTRUCTURED FOR LIMITED PERIODS TO PERMIT CERTAIN CONSTRUCTION ACTIVITIES, THESE TIMES MUST BE SCHEDULED IN ADVANCE WITH THE OWNER, AND THE CONTRACTOR MUST PROVIDE AN ALTERNATE ROUTE AND FLAGMEN TO DIRECT TRAFFIC.

QTY	BOTANICAL NAME	COMMON NAME	SPACING	SIZE	CONDITION
SHRUBS					
6	Rhus aromatica 'Gro-low'	Gro-low Fragrant Sumac	36" O.C.	#3	Cont.

NOTE:

- THE UNDERGROUND UTILITIES SHOWN HEREON HAVE NOT BEEN PHYSICALLY LOCATED BY THE SURVEYOR. HOWEVER, THE INFORMATION WAS OBTAINED FROM EXISTING PLANS AND SURFACE FACILITIES. THE GATEWAY ENGINEERS, INC. MAKES NO GUARANTEE THAT THE UNDERGROUND UTILITIES SHOWN COMPRISE ALL SUCH UTILITIES IN THE AREA, EITHER IN SERVICE OR ABANDONED. THE GATEWAY ENGINEERS, INC. DOES NOT WARRANT THAT THE UNDERGROUND UTILITIES SHOWN ARE IN THE EXACT LOCATION INDICATED. ALTHOUGH THEY ARE SHOWN AS ACCURATELY AS POSSIBLE FROM THE INFORMATION AVAILABLE.
- EXISTING CONDITIONS PLAN PREPARED BY SANFORD SURVEYING AND ENGINEERING, P.C. DATED SEPTEMBER 12, 2012.
- IN THE PREPARATION OF THIS PLAN, THE CUTS AND/OR FILLS WERE SET WITHOUT KNOWLEDGE OF THE CAPABILITIES OF THE SOILS LOCATED ON THE SITE. THE GATEWAY ENGINEERS, INC. MAKES NO REPRESENTATION BY THIS PLAN OF THE STABILITY OF THE CUTS AND/OR FILLS SHOWN. CONTRACTOR TO REFER TO GEOTECHNICAL REPORT.
- CONSTRUCTION NOTES AND TYPICAL MAY ONLY APPEAR ONCE ON THE DRAWINGS, BUT APPLY TO ALL SIMILAR CONDITIONS.
- CONTRACTOR SHALL BE REQUIRED TO PROVIDE ACCESS TO ALL BUILDINGS AT ALL TIMES DURING THE COURSE OF CONSTRUCTION.
- CONTRACTOR SHALL CONTACT UTILITY COMPANIES TO COORDINATE CONNECTION TO EXISTING PUBLIC UTILITIES. ALL PROPOSED UTILITY CONDUITS, UTILITY LINES, PIPES, FITTINGS, COUPLERS, VAULTS, AND MOUNTING PADS ETC. SHALL BE INSTALLED IN ACCORDANCE WITH THE RESPECTIVE UTILITY COMPANY REQUIREMENTS AND REGULATIONS. THIS SHALL INCLUDE ALL MATERIALS FOR INSTALLATION AND CONSTRUCTION ETC.
- IT IS THE RESPONSIBILITY OF THE CONTRACTOR TO ASCERTAIN THE EXACT LOCATION AND SIZE OF THE UTILITIES PRIOR TO CONSTRUCTION AND COORDINATE THE TIE-IN POINTS WITH THE ARCHITECT, M.E.P., AND THE APPROPRIATE UTILITY COMPANY.
- EXISTING UTILITY LINES TO BE TERMINATED PER UTILITY COMPANY REQUIREMENTS. CONTRACTOR TO CONTACT APPROPRIATE UTILITY COMPANY FOR SPECIFICATIONS.
- UTILITY LINES TO BE ABANDONED IN-PLACE UNLESS REQUIRED BY UTILITY COMPANY TO BE REMOVED OR IF LINES ARE WITH-IN LIMITS OF WORK.
- LINES ABANDONED IN-PLACE MUST BE PROPERLY CAPPED, PLUGGED, OR TERMINATED AS PER UTILITY COMPANY REQUIREMENTS.
- THE CONTRACTOR MUST COORDINATE THE REMOVAL OF EXISTING IMPROVEMENTS TO INSTALL THE PROPOSED DEVELOPMENT.
- ALL EXISTING STRUCTURES AND IMPROVEMENTS SHALL BE RAZED AND PROPERLY DISPOSED OF OFF SITE. ALL SALVAGEABLE ITEMS TO BE RETURNED TO THE OWNER.
- CONTRACTOR IS RESPONSIBLE FOR OBTAINING ALL NECESSARY PERMITS.
- SAWCUT PAVEMENT FULL DEPTH WHERE PAVEMENT IS TO BE REMOVED AND WHERE IT ABUTS PAVEMENT TO REMAIN. PAVEMENT REMOVAL INCLUDES SUBBASE MATERIALS.
- REFER TO ARCHITECTURAL AND PLUMBING PLANS FOR COORDINATION OF PERIMETER DRAIN AROUND BUILDING.
- CONTRACTOR ASSUMES ALL RESPONSIBILITY FOR REPAIRS TO ANY DAMAGE CAUSED TO THE ROADWAY, CURBING AND/OR PAINT LINES WITHIN THE LIMITS OF DISTURBANCE FOR THE LAYDOWN AREA.

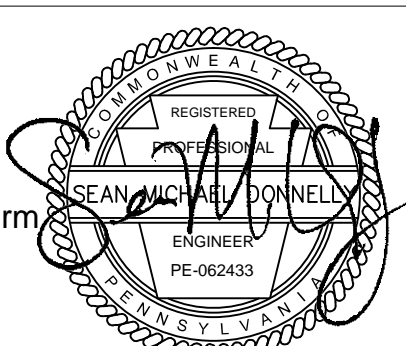


Revisions:	6-21-2013
Date	

CONSULTANTS:

**Keystone**  
Structural Solutions  
Consulting Engineers  
8150 Perry Highway, Suite 302  
Pittsburgh PA, 15237  
Phone: 412-369-9020  
Contact: Mark Sipos

**GATEWAY**  
The Gateway Engineering, Inc.  
A Full Service Civil Engineering Firm  
400 Holiday Drive, Suite 300  
Pittsburgh PA, 15220  
Phone: 412-921-4030  
Contact: Sean Donnelly



**FIRSHING, MARSTILLER, RUDSKY AND WOLF**  
ENGINEERING, INC.  
1500 ARMISTE BOULEVARD, SUITE 200  
PITTSBURGH, PA 15221  
Contact: Dave Rudsky

ARCHITECT/ENGINEERS:

IKM Project No. 12-047



**architecture  
planning  
interior design**  
IKM Incorporated  
One PPG Place  
Pittsburgh, PA 15222  
Phone: 412-281-1337  
Contact: Joe Obrtiz

Drawing Title  
SITE, GRADING AND UTILITY PLAN

Approved: Project Director

Project Title  
AMBULATORY SURGERY  
ADDITION REDESIGN

Location  
VAMC 135 EAST 38th STREET,  
ERIE PENNSYLVANIA

Date  
12 MAR 2013

Checked

Drawn

Project Number  
562-311

Building Number

Drawing Number

C101

Dwg. 4 of 86

Office of  
Construction  
and Facilities  
Management



FINAL DRAWING SUBMISSION (100%)  
FULLY SPRINKLERED