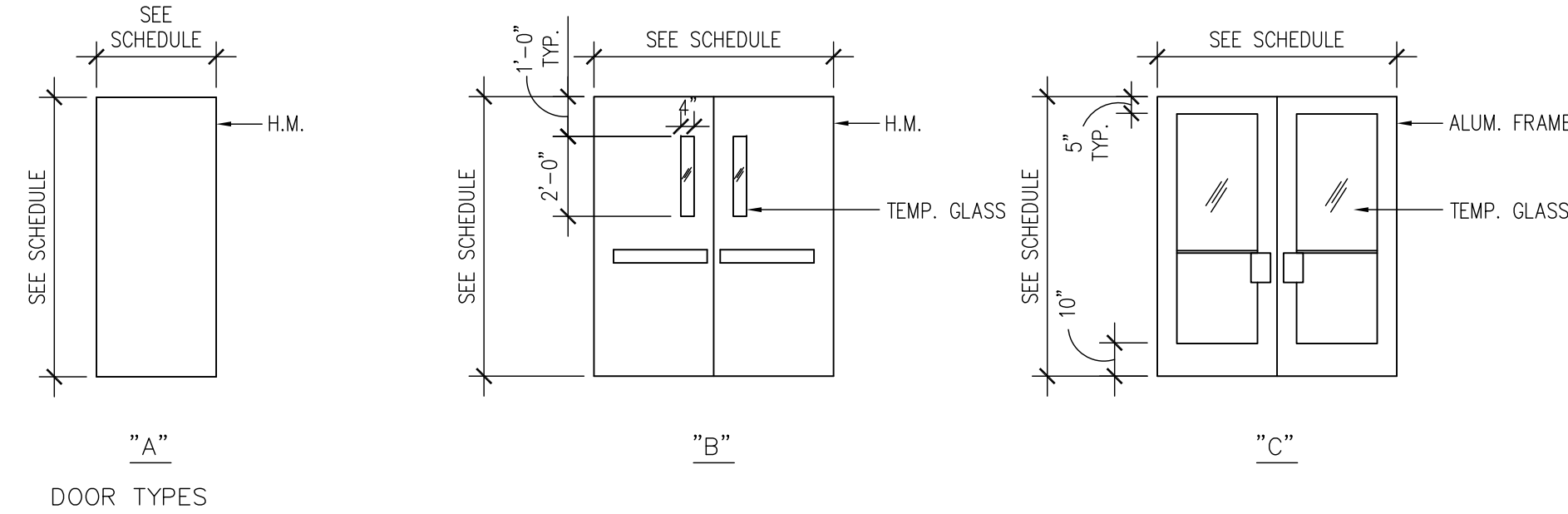


DOOR NO	DOOR & FRAME SCHEDULE										REMARKS
	LOCATION	SIZE	DOOR			FRAME			HARDWARE		
			TYPE	MATL	LABEL	MATL	HEAD	JAMB			
P1001	ELEV./ STAIR #1 LOBBY	(2) 3'-0" x 7'-0" x 1 3/4" PR	C	ALUM.	-	ALUM.	2/A4.1	-	HW 5	PROVIDE DOOR SHOE/DRIP	
PM02	ELEVATOR MACHINE ROOM	3'-0" x 7'-0" x 1 3/4"	A	H.M.	90 MIN.	H.M.	1/A4.1	1/A4.1	HW 3 (EXISTING)	REUSE EXISTING DOOR OF PHASE I. PROVIDE AUTO LATCHING DEVICE	
P602	BRIDGE VESTIBULE	(2) 3'-0" x 7'-0" x 1 3/4" PR	C	ALUM.	-	ALUM.	8/AS3.3	3/AS3.3	HW 5	PROVIDE CARD ACCESS READER (MATCHING EXISTING)	
P603	BRIDGE VESTIBULE	(2) 3'-0" x 7'-0" x 1 3/4" PR	C	ALUM.	-	ALUM.	9/AS3.3	4/AS3.3	HW 5		
P604	BRIDGE @ HOSPITAL	(2) 3'-0" x 7'-0" x 1 3/4" PR	C	ALUM.	-	ALUM.	10/AS3.3	5/AS3.3	HW 5		
X301A	HOSPITAL CORRIDOR	(2) 3'-0" x 7'-0" x 1 3/4" PR	B	H.M.	-	H.M.	5/A4.1	5/A4.1	HW 4	PROVIDE CARD ACCESS READER (MATCHING EXISTING)	
X301B	HOSPITAL CORRIDOR	(2) 3'-0" x 7'-0" x 1 3/4" PR	B	H.M.	-	H.M.	5/A4.1	5/A4.1	HW 4	PROVIDE CARD ACCESS READER (MATCHING EXISTING)	
	ELEVATORS (LEVEL P1 THRU P10)	(3) 3'-6" x 7'-0" SINGLE SPEED CENTER OPENING HORIZONTAL SLIDING DOORS, STAINLESS STEEL FINISH									
	HW 3 (EXISTING) -BUTT HINGES -CYLINDER LOCK -STOREROOM LOCKSET (LOCK F07) -CLOSER -WALL STOP -FLOOR STOP -LEVER HARDWARE -SMOKE GASKETING	HW 4 -BUTT HINGES -CYLINDER LOCK -STOREROOM LOCKSET (LOCK F07) -CLOSER -FLOOR STOP -LEVER HARDWARE				HW 5 -BUTT HINGES -WEATHERSTRIPPING -CLOSER -FLOOR STOP -LEVER HARDWARE -THRESHOLD -PANIC HARDWARE -AUTOMATIC POWER SWING DOOR OPENER OPERATOR					
NOTE: REFERENCE AS3.1 & AS1.2 FOR DOOR LOCATION											



## DOOR SCHEDULE AND TYPES

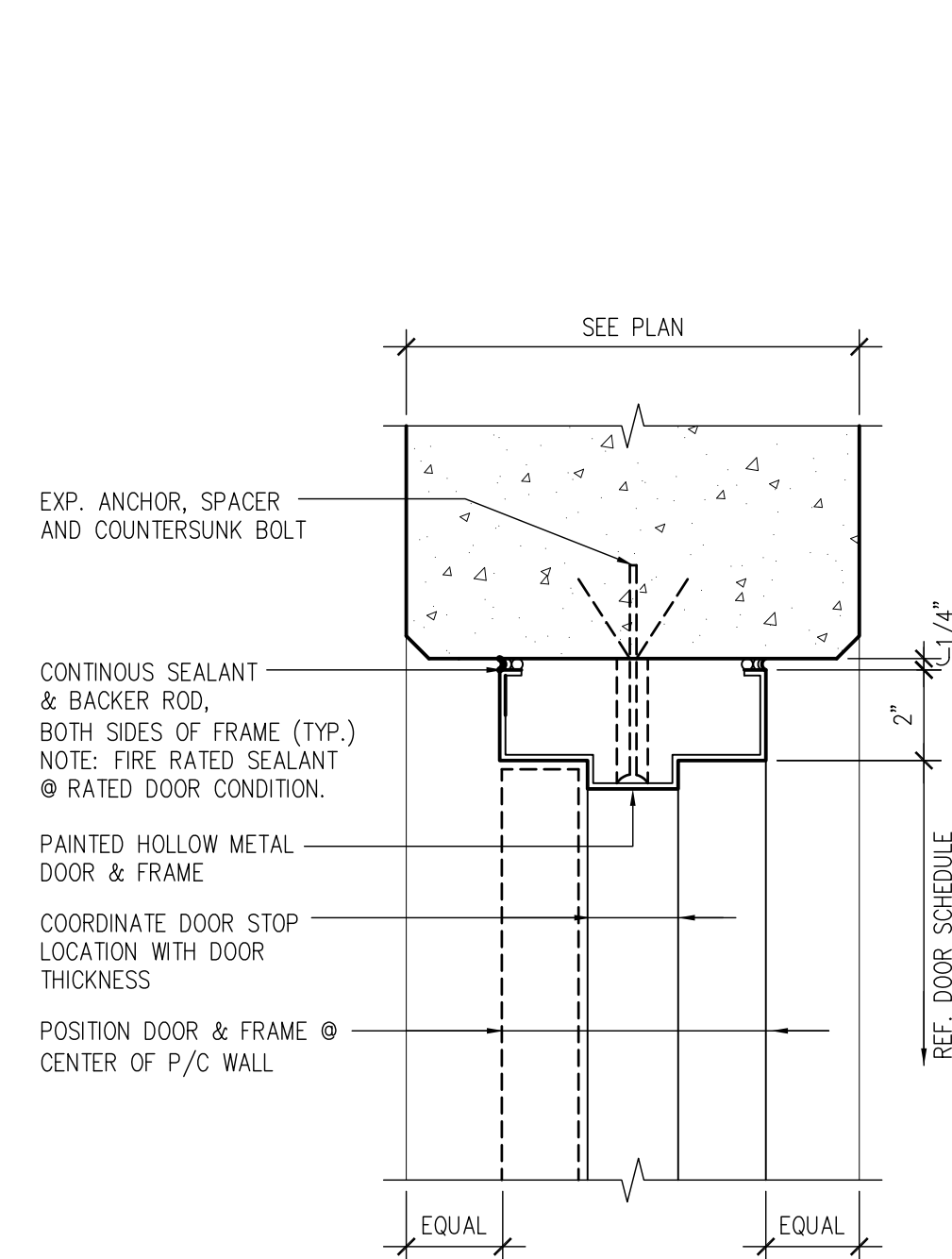
ROOM FINISH SCHEDULE													
ROOM NUMBER	ROOM NAME	FLOORS			WALLS			CEILING			REMARKS		
		CONC. W/ SEALER	WALK-OFF MAT	ITEMIZED FLOOR TILE	CONC. BLOCK W/P/PAINT	P/C CONC.	P/C CONC. W/P/PAINT	C.P. WALL W/P/PAINT	GWB (PAINTED)	STRUCTURE ABV.		LINEAR BAFFLE CEILING	LINEAR PLANK CEILING
P401	ELEV. LOBBY	●					●				●		
P401	STAIR #1												
P501	ELEV. LOBBY	●					●				●		
P501	STAIR #1	●											
P601	ELEV. LOBBY	●					●				●		
P601	STAIR #1	●					●						
P602	BRIDGE VESTIBULE		●					●				●	
P603	BRIDGE		●					●			●		
P701	ELEV. LOBBY	●					●				●		
P701	STAIR #1												
P801	ELEV. LOBBY	●					●				●		
P801	STAIR #1	●											
P901	ELEV. LOBBY	●					●				●		
P901	STAIR #1	●					●						
P1001	ELEV. LOBBY	●					●				●		
P1001	STAIR #1	●											
PM01	STAIR #1	●					●				●		
PM02	ELEV. MACHINE RM.	●				●					●		
	ELEVATOR CARS	WALL PANELS: 14-GAUGE STAINLESS STEEL - SIDE PANELS: 14-GAUGE STAINLESS STEEL / TEXTURED STAINLESS STEEL - REAR PANELS: 14-GAUGE STAINLESS STEEL / GLASS-BACKED CEILING & DOOR: 14-GAUGE STAINLESS STEEL FLOOR: STUDDED RUBBER TILE, BLACK											

PAINT NOTE FOR STAIR/ELEV. #1 (TYP. EVERY LEVEL):

1. PAINT ALL LOBBY AND STAIR PRECAST WALLS, INCLUDING EXPOSED CONDUITS.
2. PAINT UNDERSIDE & SIDES OF STAIR RUNS, LANDINGS, LOBBY CEILINGS, AND ROOF (INCLUDING EXPOSED CONDUITS, PLASTIC, & MISC. STEEL).
3. PAINT ALL EXPOSED STEEL.
5. PAINT ENTIRE INSIDE OF ELEVATOR SHAFT, INCLUDING EXPOSED CONDUITS, VERT./HORIZ. T.S., & STEEL BEAMS, FLAT BLACK.

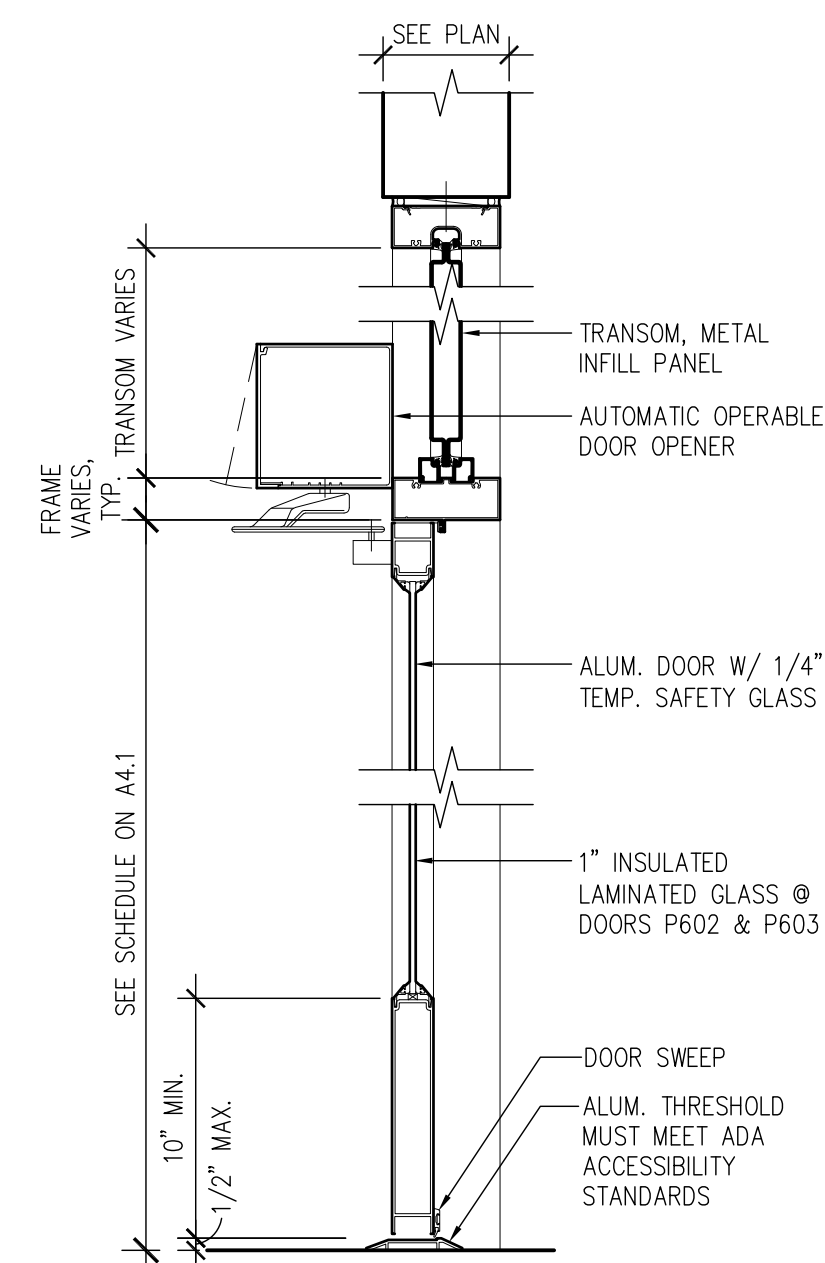
PAINT NOTE FOR SHEARWALLS (TYP. EVERY LEVEL):  
PAINT INTERIOR FACE OF ALL SHEARWALLS, INCLUDING EXPOSED CONDUITS, PLASTIC, & STEEL.

CAULK NOTE:  
PROVIDE 2-HOUR FIRE RATED CAULK BETWEEN TOP OF WALL & UNDERSIDE OF STRUCTURE ABOVE.

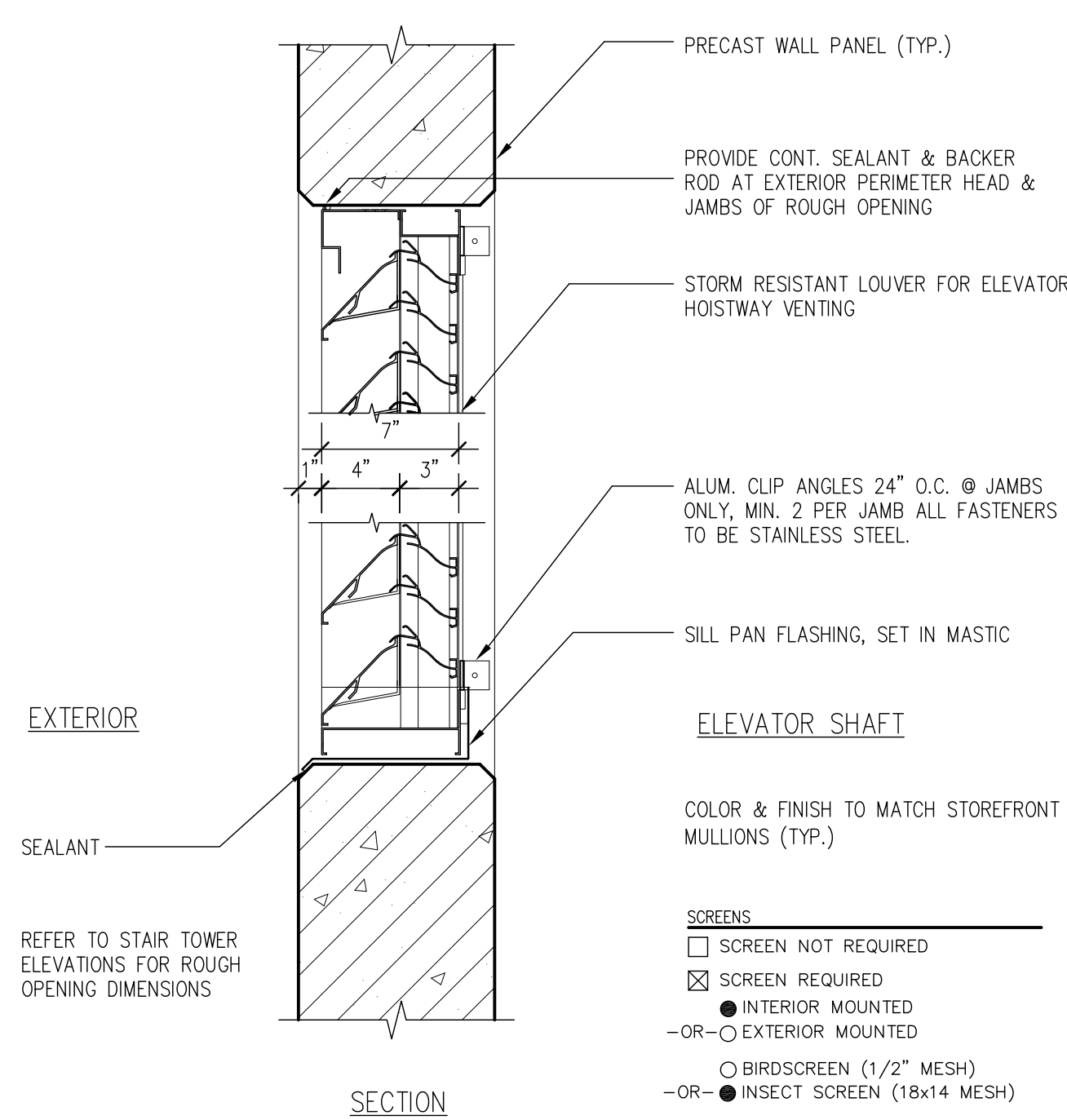


H.M.DOOR HEAD/JAMB DETAIL  
AT PRECAST WALL

SCALE: 3" = 1'-0"

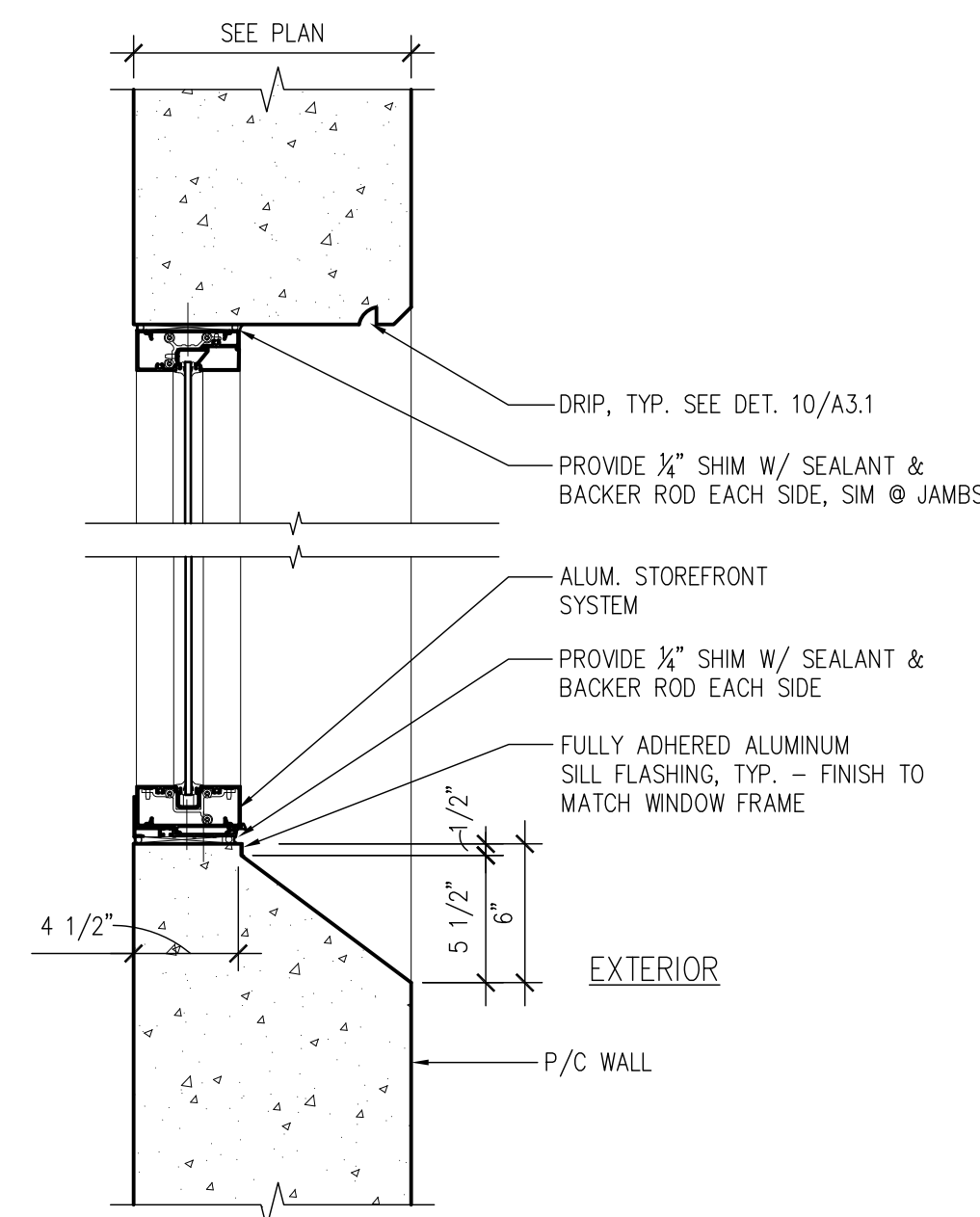


2 ALUM DOOR SILL/HEAD DETAIL  
A4.1 SCALE: 1 1/2" = 1'-0"

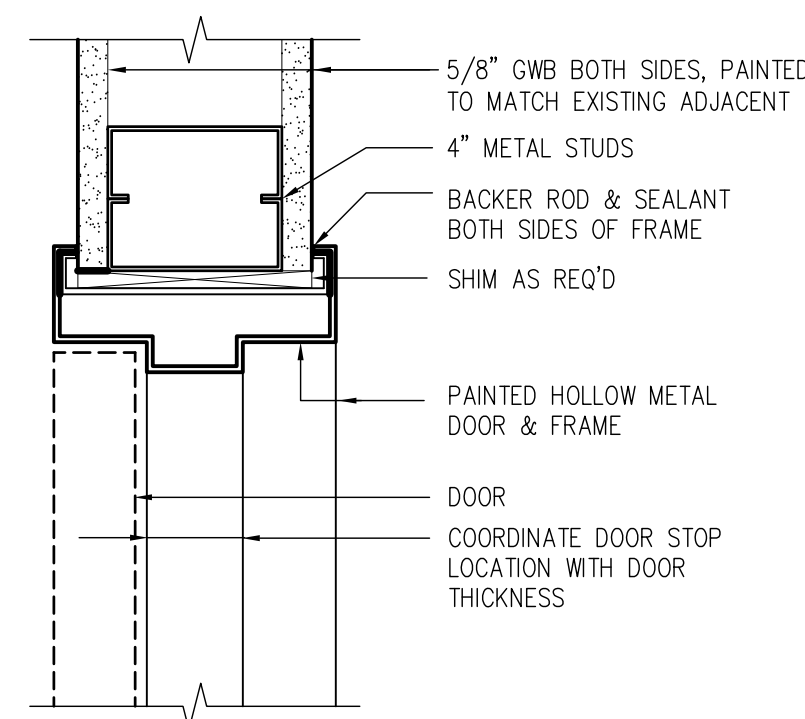


### 3 LOUVER DETAIL

A4.1 SCALE: 1 1/2" = 1'-0"



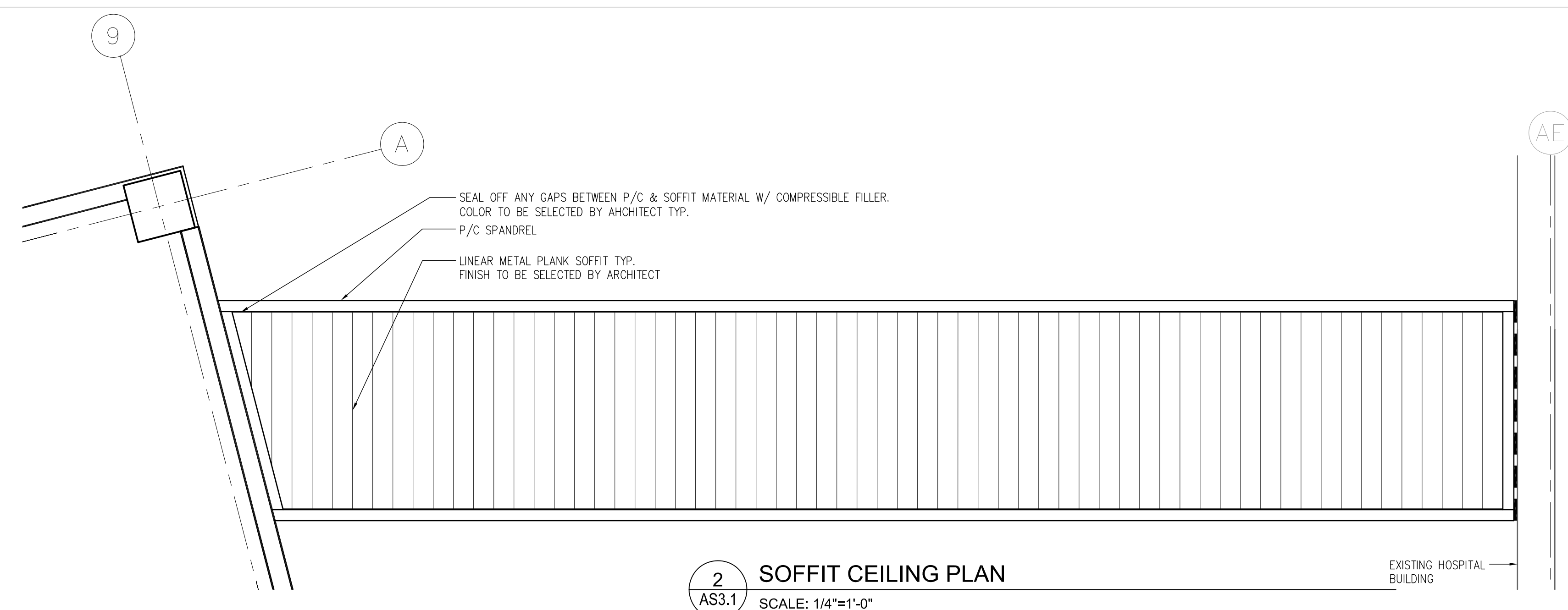
4 CURTAINWALL DETAIL  
A4.1 SCALE: 1 1/2" = 1'-0"



5 INTERIOR DOOR HEAD/JAMB DETAIL  
A4.1 SCALE: 3" = 1'-0"

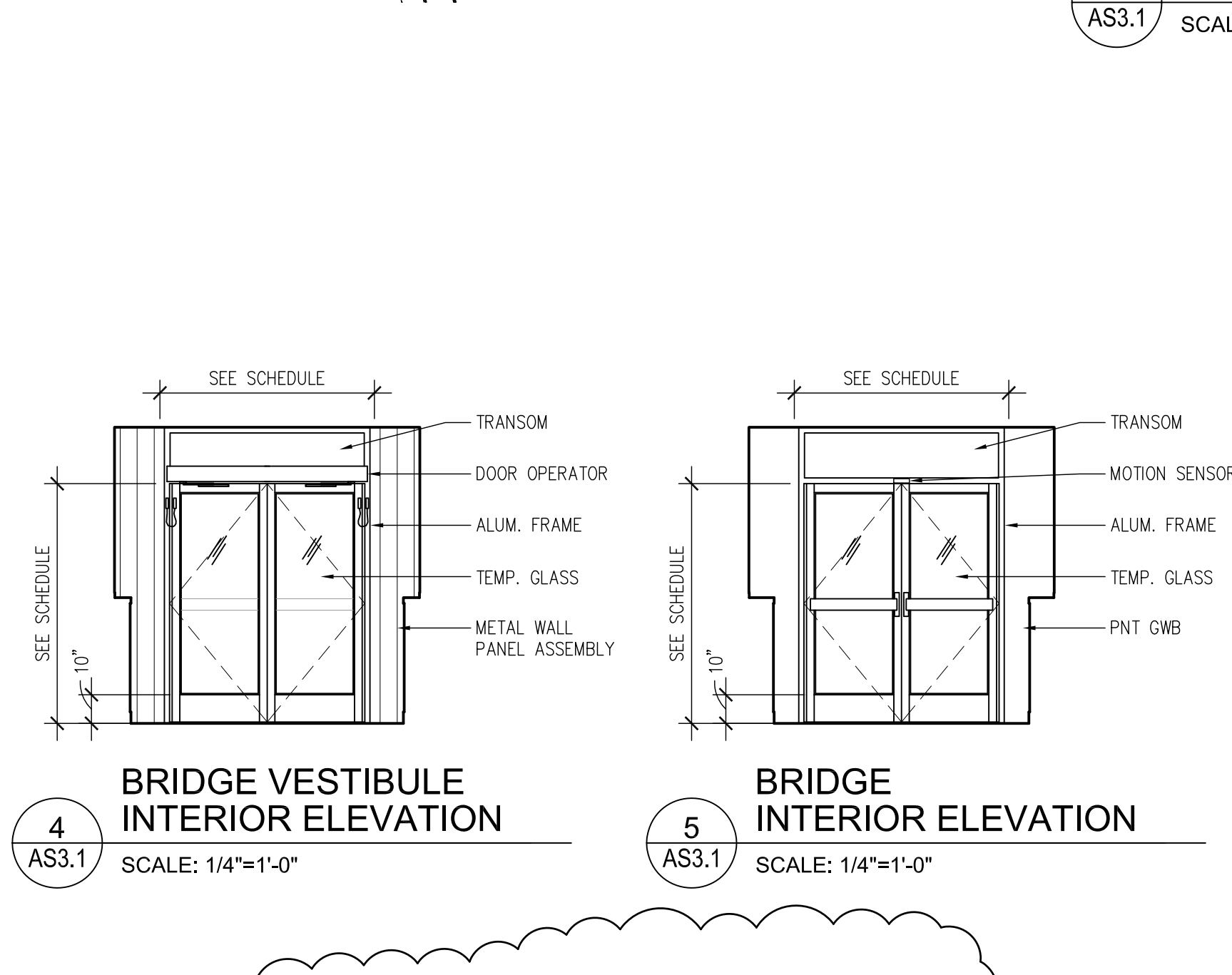
		CONSULTANTS:		ARCHITECT/ENGINEERS:		Project Title		Project Number		Office of Construction and Facilities Management	
						DOOR AND ROOM FINISH SCHEDULES		Veterans Affairs Medical Center - Expand Parking Garage Phase II		642-336	
								Building Number		-	
								Drawing Number		A4.1	
 Addendum #1		06/21/13				Location		Philadelphia, PA			
Revisions:		Date				Approved Project Director		Date		Checked	
								09/18/12		PCA	
										SSK	





1 ROOF PLAN  
AS3.1 SCALE: 1/4"=1'-0"

2 SOFFIT CEILING PLAN  
AS3.1 SCALE: 1/4"=1'-0"



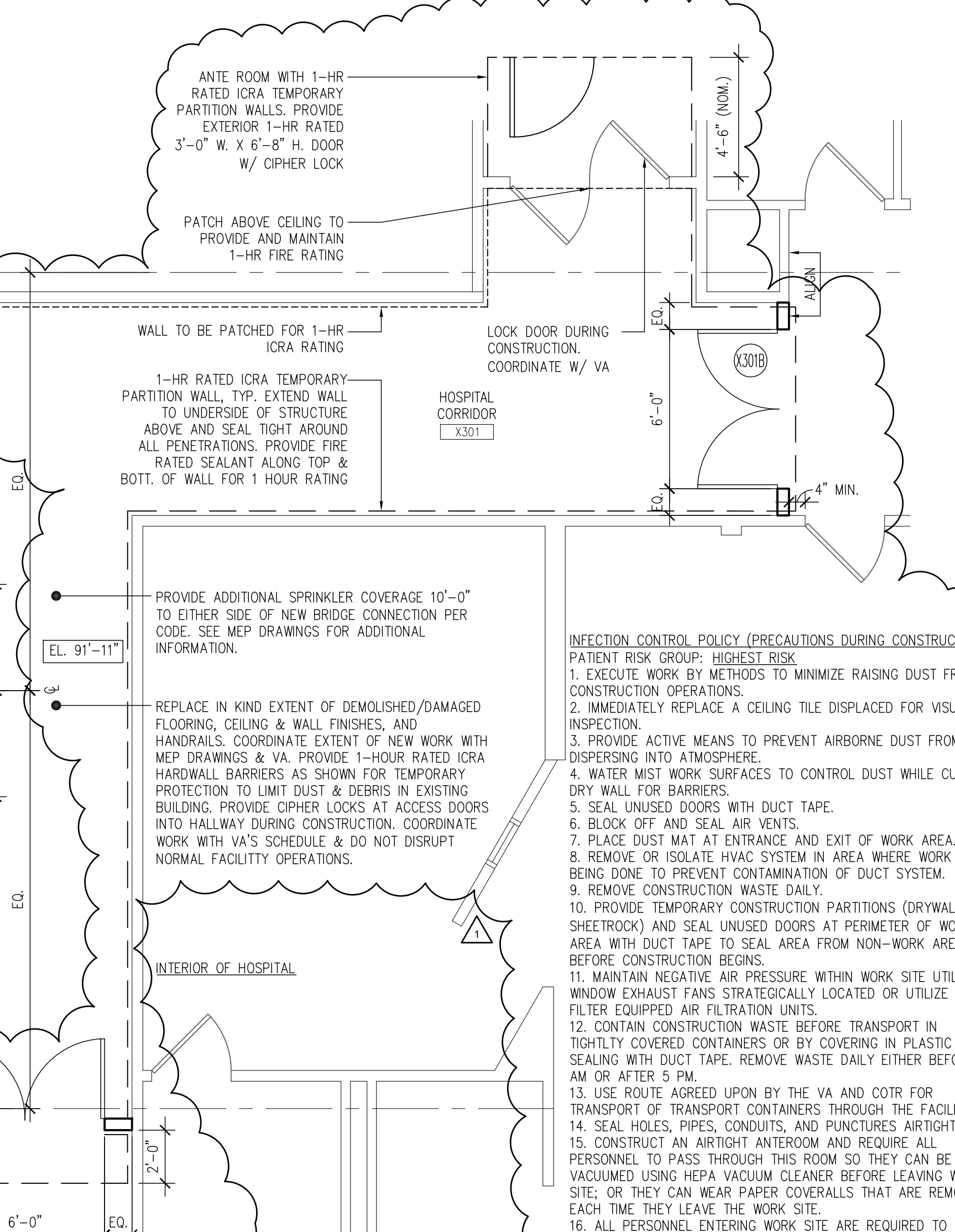
3  
AS3.1

CEILING PLAN

SCALE: 1/4"=1'-0"

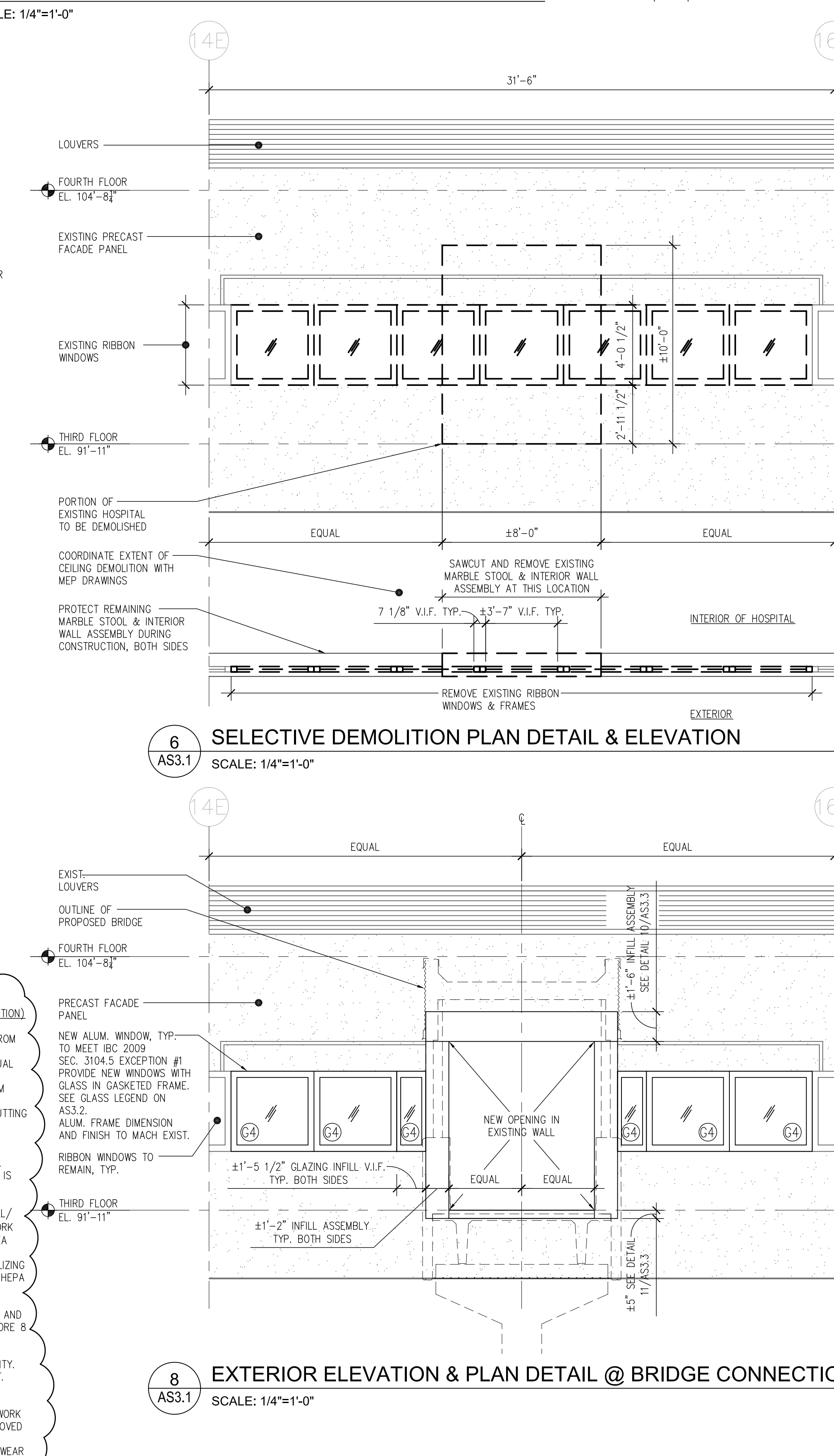
4  
AS3.1

BRIDGE  
INTERIOR ELEVATION



7 BRIDGE PLAN  
AS3.1 SCALE: 1/4"=1'-0"

## 6 SELECTIVE DEMOLITION PLAN DETAIL & ELEVATION

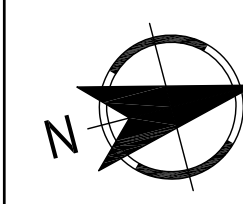


8 EXTERIOR ELEVATION & PLAN DETAIL @ BRIDGE CONNECTION  
AS3.1 SCALE: 1/4"=1'-0"

CONSULTANTS:

ARCHITECT/ENGINEERS:

**TimHaa**h**s**  
ENGINEERS • ARCHITECTS



THE WORK AREA	
<p><b>Drawing Title</b></p> <p><b>PEDESTRIAN BRIDGE PLANS AND RELATED DETAILS</b></p>	
<p>Approved Project Director</p>	

Project Title <b>Veterans Affairs Medical Center</b> <b>- Expand Parking Garage Phase II</b>			Project Number <b>642-336</b>	
			Building Number -	
Location <b>Philadelphia, PA</b>			Drawing Number  <b>AS3.1</b>	
Date <b>09/18/12</b>	Checked <b>PCA</b>	Drawn <b>VLJ</b>		

Office of  
Construction  
and Facilities  
Management

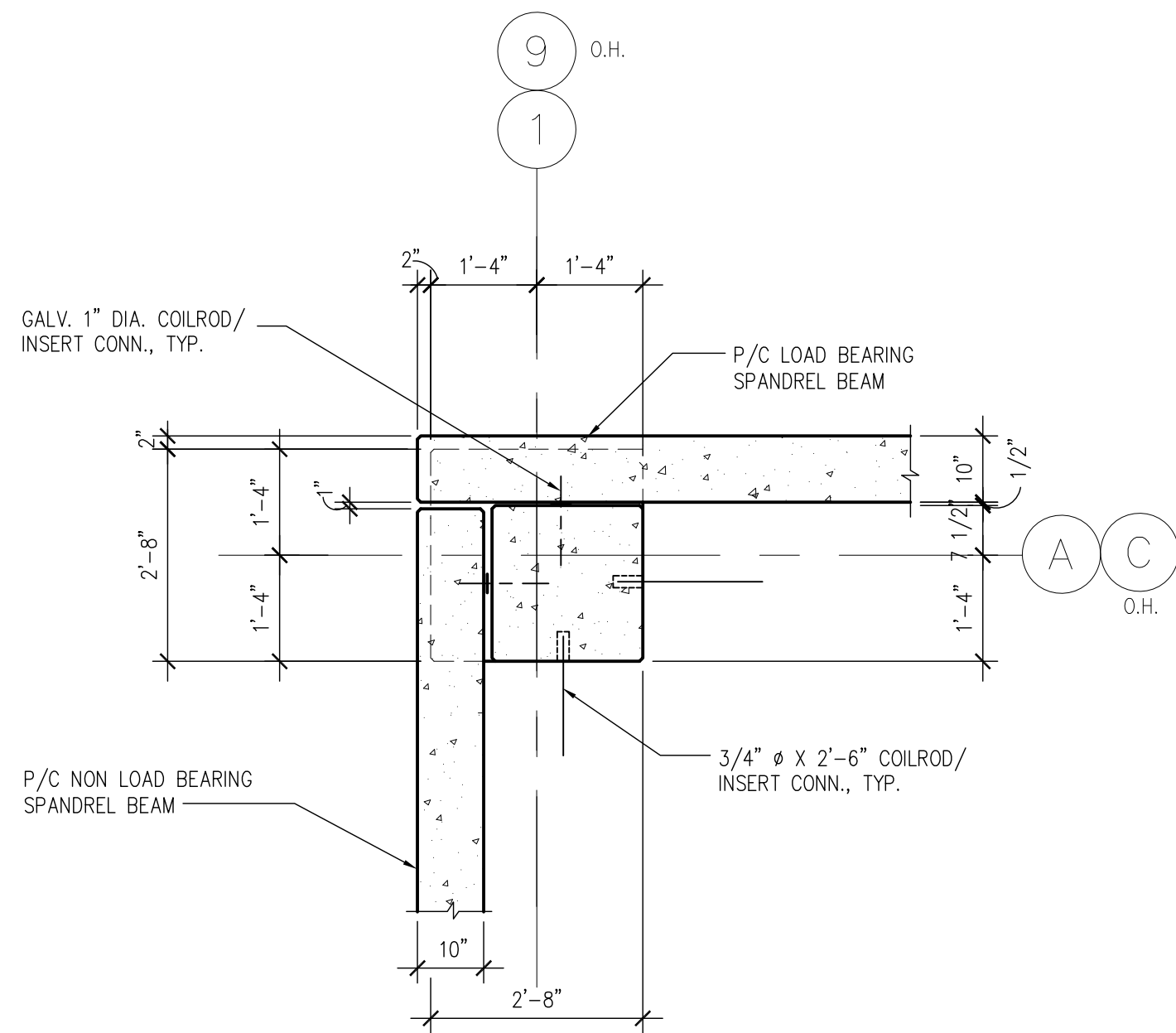




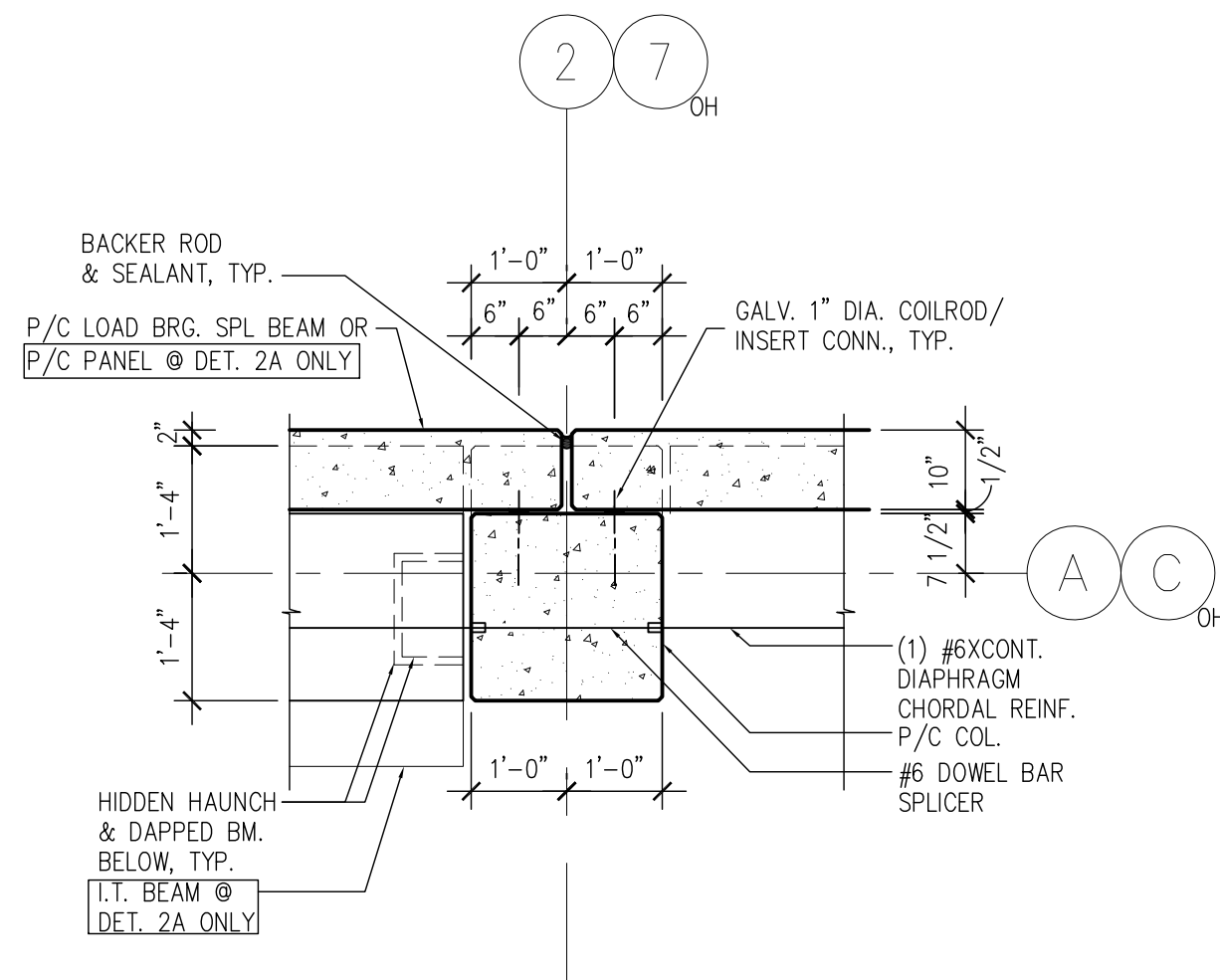




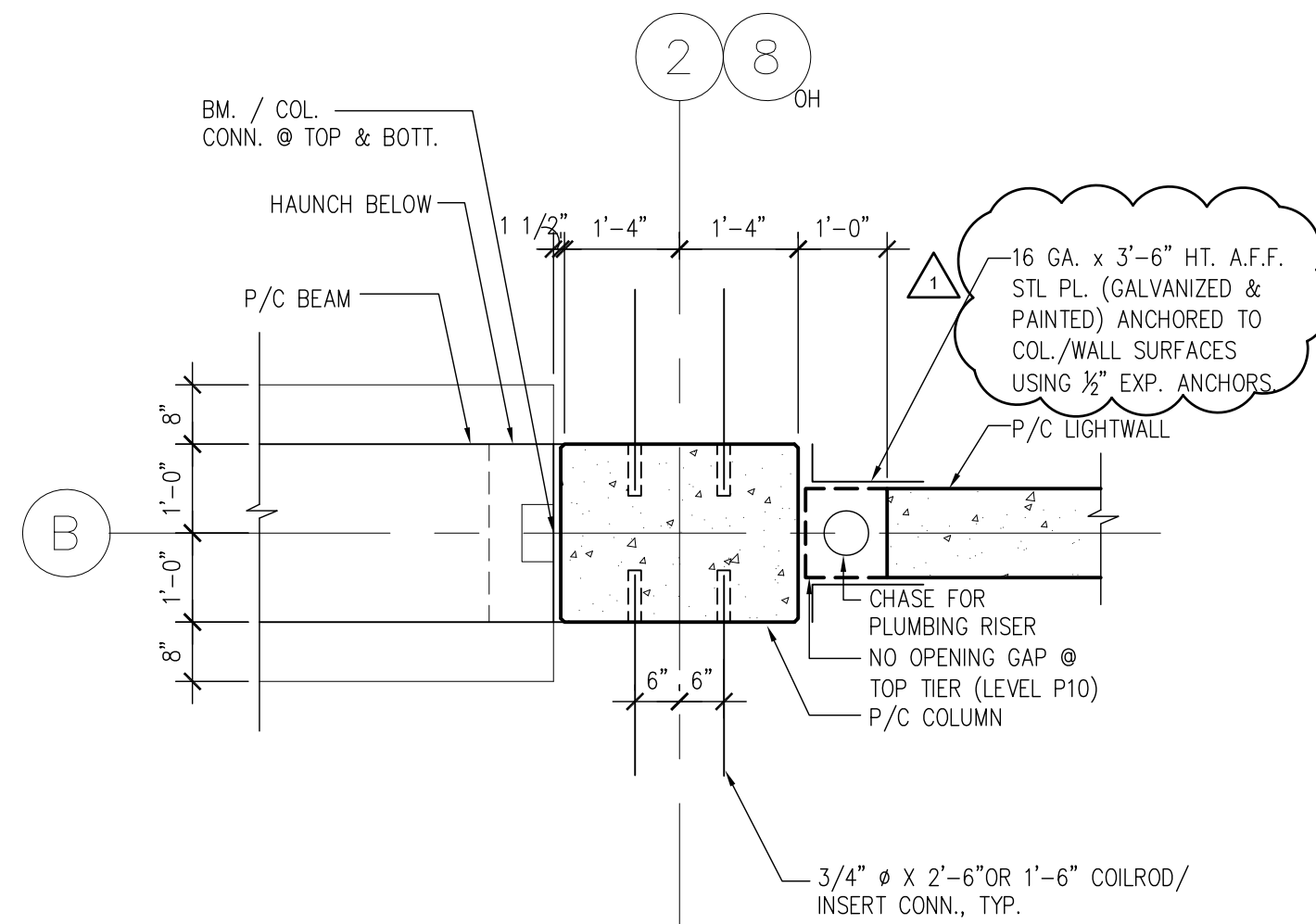
three inches = one foot  
one and one half inches = one foot  
one inch = one foot  
three quarters inch = one foot  
one half inch = one foot  
three eighths inch = one foot  
one quarter inch = one foot  
one eighth inch = one foot



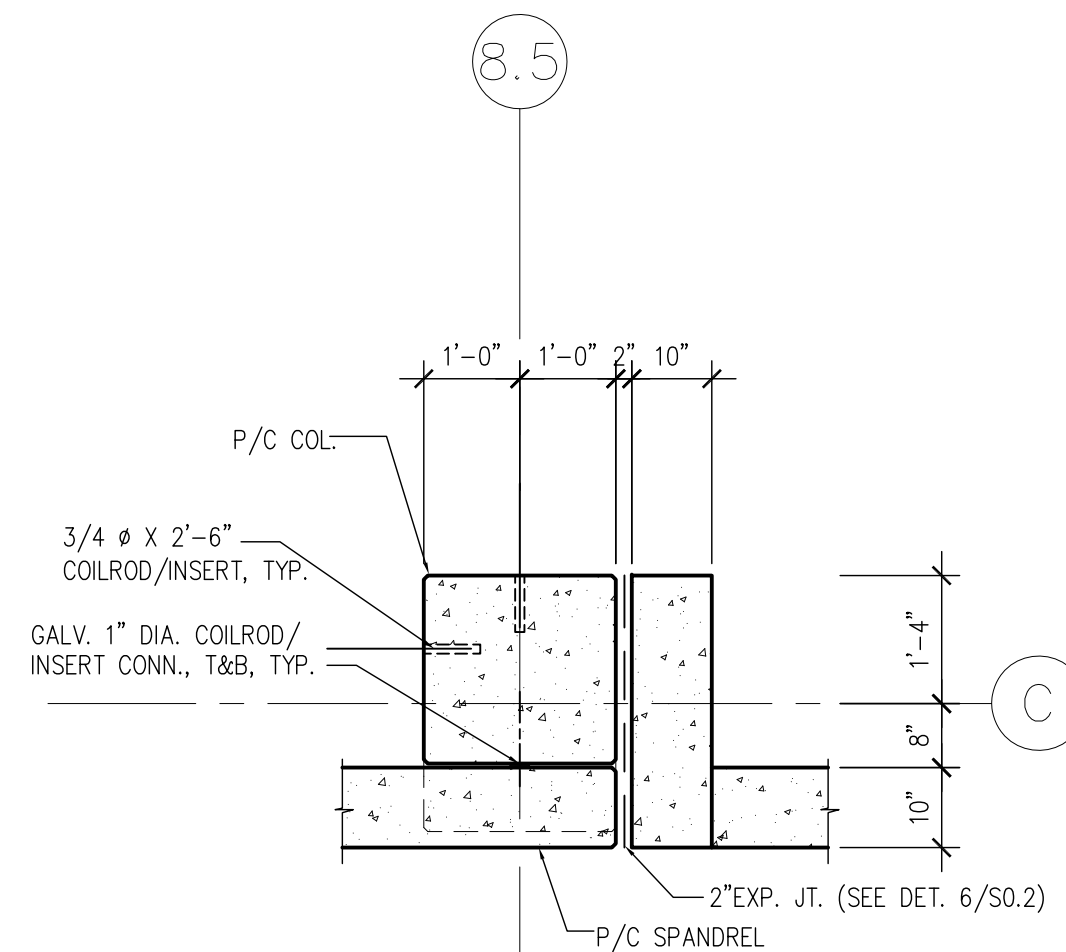
1  
S4.2  
COLUMN PLAN DETAIL  
SCALE: N.T.S.



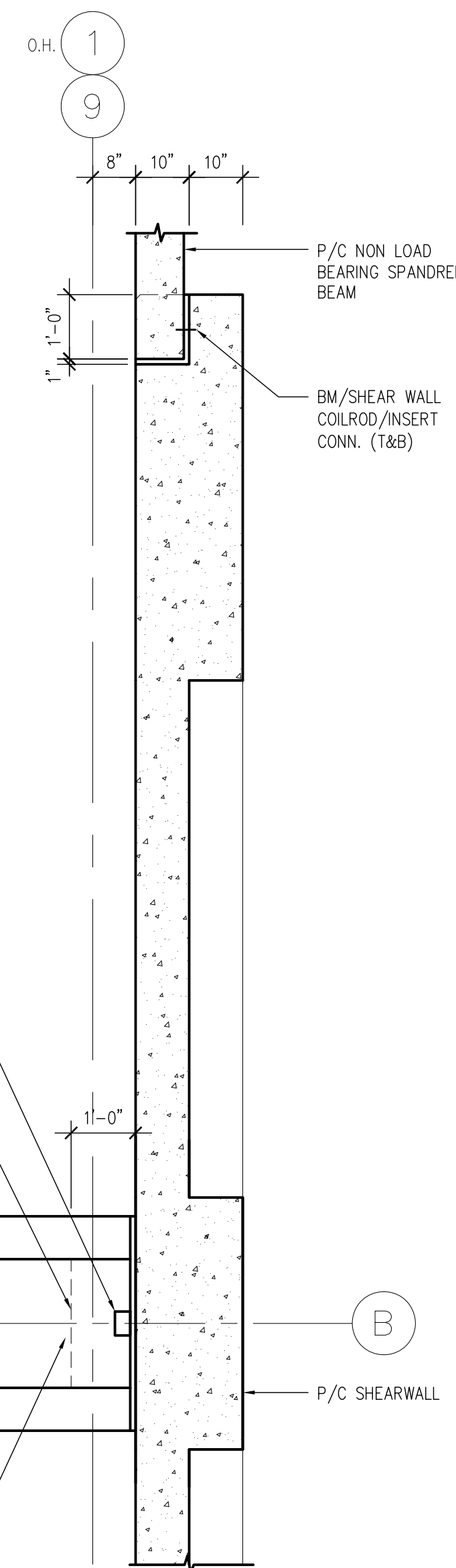
2  
S4.2  
2A  
S4.2  
COLUMN PLAN DETAIL  
SCALE: N.T.S.



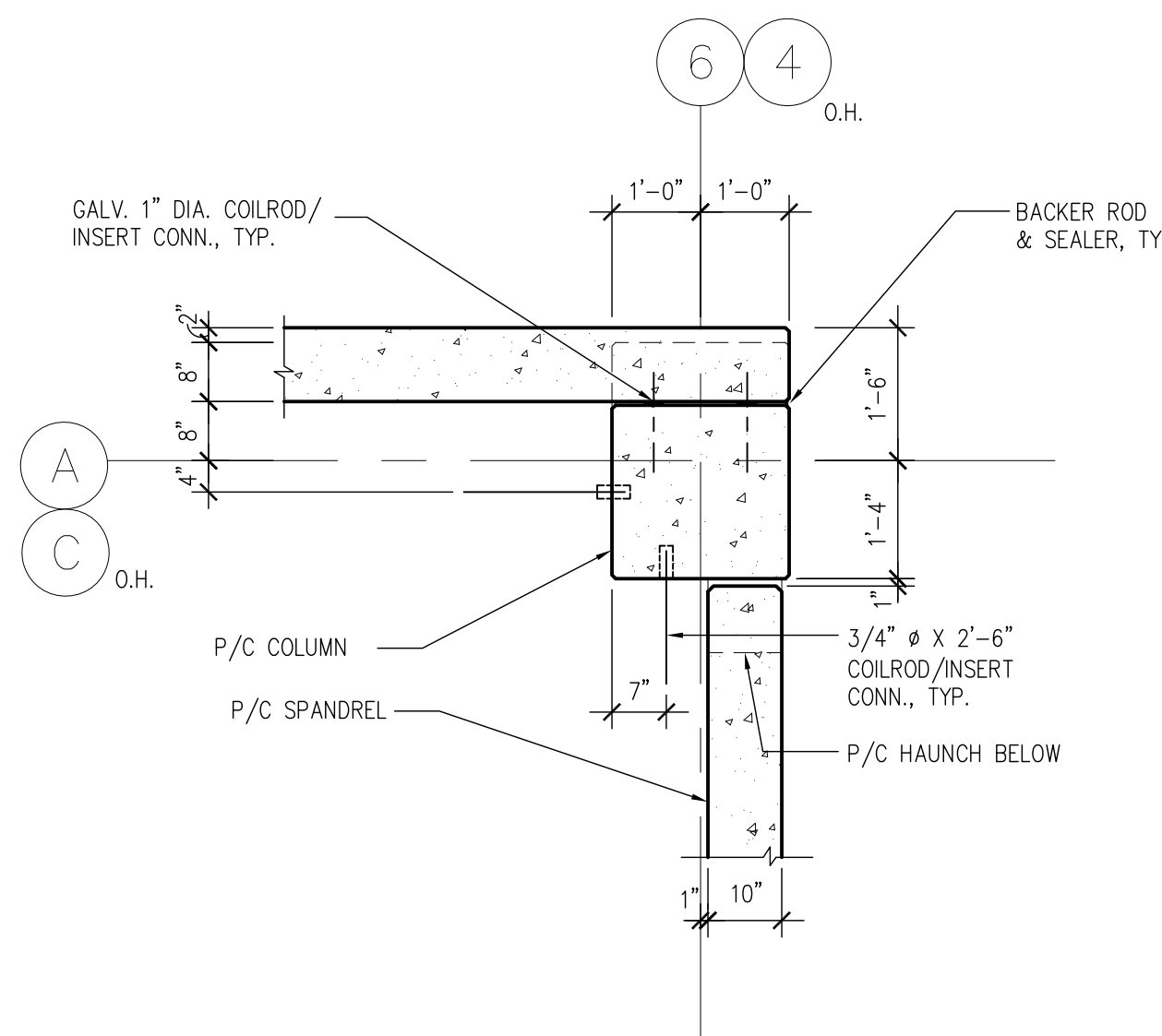
3  
S4.2  
COLUMN PLAN DETAIL  
SCALE: N.T.S.



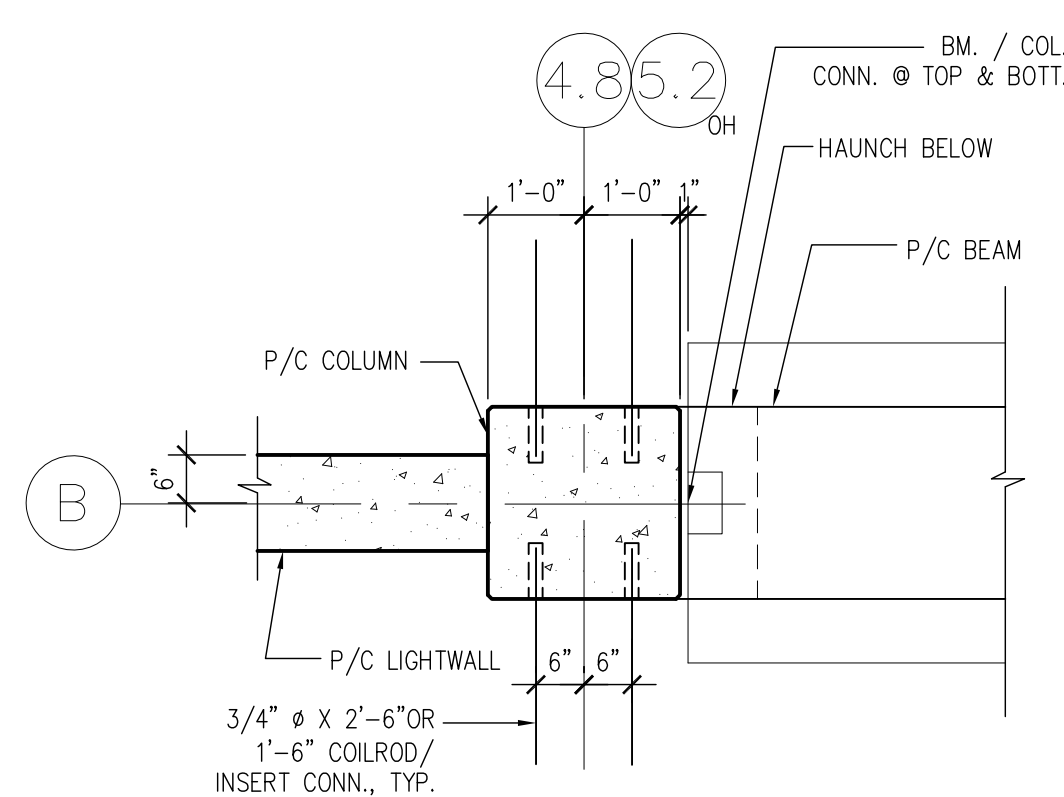
4  
S4.2  
COLUMN PLAN DETAIL  
SCALE: N.T.S.



5  
S4.2  
P/C SHEARWALL/ SPL BM PLAN DETAIL  
SCALE: N.T.S.

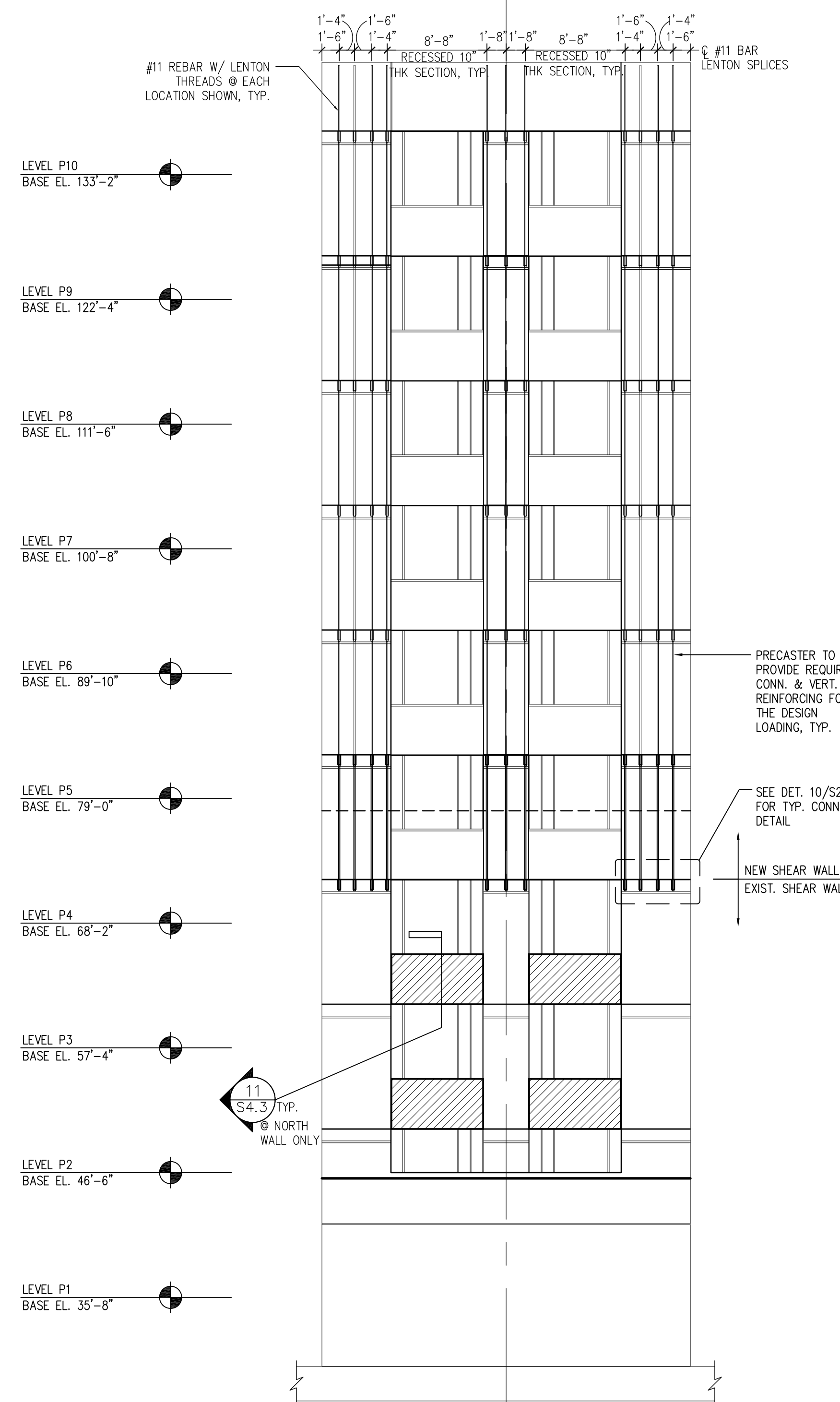


6  
S4.2  
COLUMN PLAN DETAIL  
SCALE: N.T.S.



7  
S4.2  
COLUMN PLAN DETAIL  
SCALE: N.T.S.

- COLUMN NOTES:
- CN1. P/C COLUMNS (INCLUDING CONNECTIONS, HAUNCH DESIGN) SHALL BE BASED ON PERFORMANCE-TYPE DESIGN. THE COLUMNS SHALL BE DESIGNED IN ACCORDANCE TO THE REQUIREMENTS AND CRITERIA IN SPECIFICATION SECTION 03410 & DETAILS ON THIS SHEET & S2.1.
  - CN2. TYPICAL U.N.: F'C = 6000 PSI
  - CN3. ALL COL. TIES SHALL BE #4 @ 16" (MAX.) O.C., U.N.
  - CN4. PROVIDE (3) #4 ADDITIONAL COL. TIES @ 4" @ TOP & BOT. OF COLS.
  - CN5. SEE DETAIL 9/S2.1 FOR COLUMN SPLICE DETAIL & DETAIL 10/S2.1 FOR WALL SPLICE DETAIL.
  - CN6. USE 3" x 2'-6" COIL RODS @ TYPICAL COIL ROD/INSERT CONN. TO P/C COLUMNS. USE 3" x 1'-6" COIL RODS @ F.D. LOCATIONS
  - CN7. PRECASTER TO COORDINATE ALL EMBEDDED CONDUIT REQUIREMENTS FOR LIGHT POLES AT TOP OF COLUMNS AND WALLS.



8  
S4.2  
SHEAR WALL ELEVATION DETAIL (@SW#2)  
SCALE: N.T.S.

		CONSULTANTS:		ARCHITECT/ENGINEERS:			Drawing Title PRECAST COLUMN AND SHEARWALL DETAILS		Project Title Veterans Affairs Medical Center - Expand Parking Garage Phase II		Project Number 642-336		Office of Construction and Facilities Management	
							Approved Project Director		Location Philadelphia, PA		Building Number -			
		06/21/13 Date							Date 09/18/12		Checked PCA		Drawn JMJ	
									S4.2					