

FIRE PROTECTION LEGEND

	BRANCH SIDE CONNECTION		FIRE ALARM CONTROL PANEL
	BRANCH TOP CONNECTION		MANUAL PULL STATION, MOUNT 4'-0" AFF
	CHECK VALVE		SMOKE DETECTOR CEILING MOUNTED
	GATE VALVE		STROBE UNIT W/CANDELA RATING, MOUNT 6'-8" AFF
	RISER DOWN		WEATHERPROOF CHIME/STROBE UNIT W/CANDELA RATING, MOUNT 6'-8" AFF
	RISER UP OR DOWN		CHIME/STROBE UNIT W/CANDELA RATING, MOUNT 6'-8" AFF
	STANDPIPE HOSE VALVE STATION		FIRE ALARM CHIME UNIT, MOUNT 6'-8" AFF
	PENDENT SPRINKLER HEAD		CONTACT MONITOR MODULE
	EXISTING SPRINKLER HEAD		VALVE TAMPER SWITCH
	PULL STATION, EXISTING TO REMAIN		DUCT SMOKE DETECTOR
	FIRE ALARM RELAY		HEAT DETECTOR
	CEILING MOUNTED CHIME/STROBE UNIT W/CANDELA RATING		REMOTE ANNUNCIATOR
	MAGNETIC DOOR HOLD OPEN (24VDC)		NOTIFICATION APPLIANCE CIRCUIT BOOSTER PANEL
	FLOOR CONTROL VALVE ASSEMBLY		CONTROL INTERFACE RELAY
	KITCHEN HOOD FIRE SUPPRESSION SYSTEM		WATERFLOW SWITCH - PADDLE TYPE

FIRE ALARM SYSTEM SEQUENCE OF OPERATION MATRIX

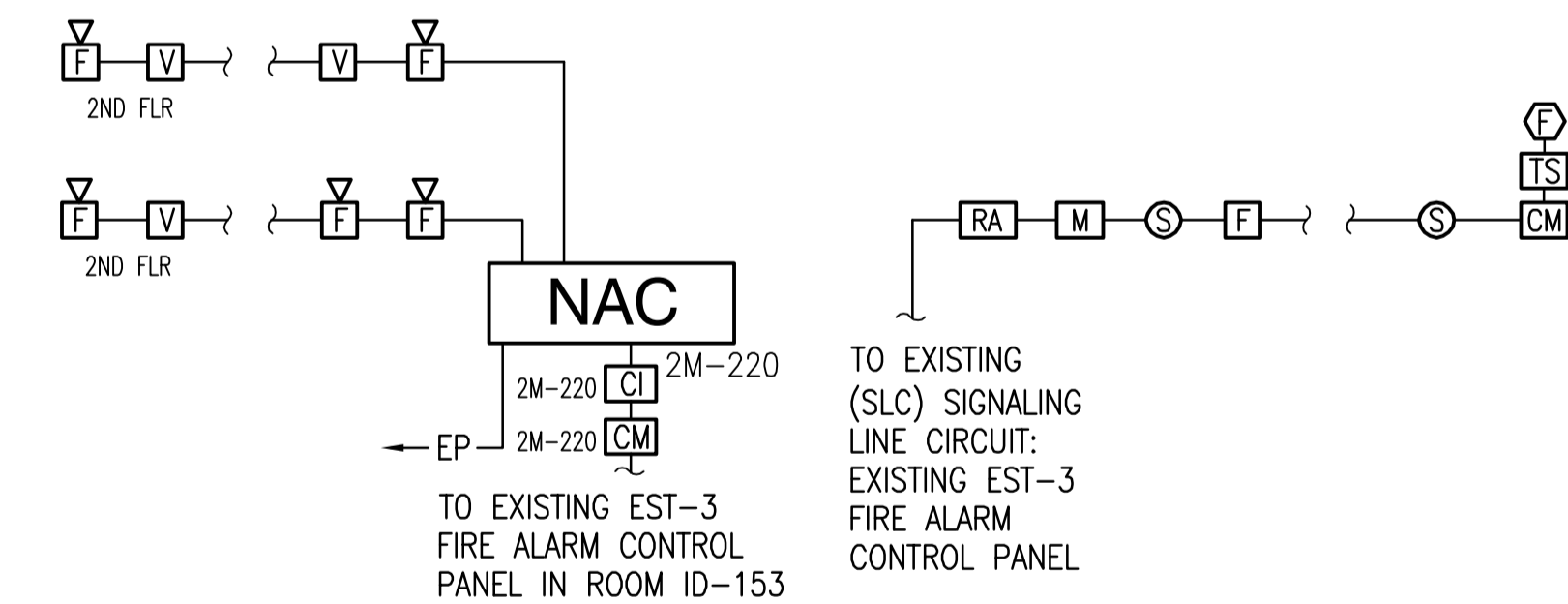
INITIATION	KEY OPERATED MANUAL FIRE ALARM STATION	AREA SMOKE DETECTOR	DUCT SMOKE DETECTOR	WATERFLOW SWITCH	SPRINKLER VALVE TAMPER SWITCH	FACP MODULE TROUBLE	FIRST FLOOR ELEVATOR LOBBY SMOKE	SECOND FLOOR ELEVATOR LOBBY SMOKE	ELEVATOR SHAFT HEAT DETECTOR	ELEVATOR SHAFT SMOKE DETECTOR	DOOR HOLD OPEN SMOKE DETECTORS
ACTIVATE FIRE ALARM CHIMES AND STROBE LIGHTS	YES	YES	NO	YES	NO	NO	YES	YES	YES	YES	YES
DISPLAY ALARM INDICATION AT FACP	YES	YES	NO	YES	NO	NO	YES	YES	YES	YES	YES
RECORD INFORMATION ON FACP	YES	YES	YES	YES	YES	YES	YES	YES	YES	YES	YES
DISPLAY SUPERVISION CONDITION AT FACP	NO	NO	YES	NO	YES	YES	NO	NO	NO	NO	NO
SHUT DOWN ASSOCIATED AHU	NO	NO	YES	NO	NO	NO	NO	NO	NO	NO	NO
TRANSMIT ALARM SIGNAL TO CAMPUS FIRE REPORTING STATION	YES	YES	NO	YES	NO	NO	YES	YES	YES	YES	YES
TRANSMIT TROUBLE SIGNAL TO CAMPUS FIRE REPORTING STATION	NO	NO	NO	NO	NO	YES	NO	NO	NO	NO	NO
TRANSMIT SUPERVISORY SIGNAL TO FIRE REPORTING STATION	NO	NO	YES	NO	YES	NO	NO	NO	NO	NO	NO
PRIMARY ELEVATOR RECALL	YES	YES	NO	YES	NO	NO	YES	YES	YES	YES	NO
SECONDARY ELEVATOR RECALL	NO	NO	NO	NO	NO	NO	YES	NO	NO	YES	NO
RELEASE DOOR MAGNETS	NO	NO	NO	NO	NO	NO	NO	NO	NO	NO	YES
SHUNT TRIP ELEVATOR POWER	NO	NO	NO	NO	NO	NO	NO	NO	YES	NO	NO

GENERAL NOTES

- THE CONTRACTOR SHALL PROVIDE A MODIFIED AND EXTENDED SYSTEM TO INCLUDE ALL LABOR, MATERIALS, TOOLS, AND EQUIPMENT FOR A FUNCTIONAL SYSTEM INCLUDING ALL NECESSARY APPURTENANCES CUSTOMARILY INCLUDING IF NOT SPECIFICALLY CALLED OUT.
- ENTIRE INSTALLATION, INCLUDING MATERIALS, EQUIPMENT, AND WORKMANSHIP, SHALL CONFORM WITH ALL APPLICABLE LAWS, CODES, AND REGULATIONS OF STATE AND FEDERAL AUTHORITIES.
- THIS PROJECT SHALL CONFORM TO APPLICABLE NFPA STANDARDS AND OTHER REGULATORY BODIES HAVING JURISDICTION OVER THE CLASS OF WORK.
- THE CONTRACTOR SHALL OBTAIN AND PAY FOR ALL PERMITS, LICENSES, DOCUMENTS, AND SERVICES RELATED TO INSTALLATION OF THE WORK.
- CONTRACTORS SHALL COORDINATE THEIR WORK WITH THE OTHER TRADES IN ORDER TO RESOLVE ANY CONFLICT THAT MIGHT ARISE DUE TO THE LOCATION OF SPRINKLER PIPING, ALARM DEVICES, FIRE PROTECTION EQUIPMENT OR THE USE OF SPACE.
- ALL EQUIPMENT REMOVED FROM THE BUILDING, DURING DEMOLITION, SHALL BECOME THE PROPERTY OF THE CONTRACTOR AND SHALL BE REMOVED FROM THE SITE UNLESS OTHERWISE NOTED.
- EXISTING FIRE ALARM DEVICES, SPRINKLERS, SPRINKLER PIPING AND EQUIPMENT NOTED ARE FOR THE CONVENIENCE OF THE CONTRACTOR ONLY. THE CONTRACTOR SHALL FIELD VERIFY ALL EXISTING FIRE ALARM DEVICES, SPRINKLERS, SPRINKLER PIPING AND FIRE PROTECTION EQUIPMENT, SIZES, AND THEIR RESPECTIVE LOCATIONS BEFORE PROCEEDING WITH ANY ASSOCIATED WORK.
- PRIOR TO SUBMITTING A PROPOSAL THE CONTRACTOR IS STRONGLY ENCOURAGED TO VISIT THE SITE AND THOROUGHLY INSPECT ALL EXISTING CONDITIONS TO INSURE THAT THE WORK REPRESENTED ON THE DRAWINGS CAN BE INSTALLED AS INDICATED.
- SPRINKLER SYSTEM SHALL BE DESIGNED AND INSTALLED IN ACCORDANCE WITH NFPA 13, 2010 EDITION AND THE DEPARTMENT OF VETERANS AFFAIRS VA FIRE PROTECTION DESIGN GUIDELINES.
- NO PIPE PENETRATION OF STRUCTURAL MEMBERS, EXCEPT AS NOTED, IS PERMITTED WITHOUT THE APPROVAL OF THE STRUCTURAL ENGINEER.
- INSTALL HANGERS AND SUPPORTS FOR SPRINKLER SYSTEM PIPING ACCORDING TO NFPA 13. COMPLY WITH REQUIREMENTS FOR HANGER MATERIALS IN NFPA 13.
- RUN SPRINKLER PIPING SUCH THAT IT DOES NOT RUN ABOVE ELECTRICAL PANELS, EQUIPMENT, OR SIMILAR.
- FIRE ALARM SYSTEM SHALL BE MODIFIED AND INSTALLED IN ACCORDANCE WITH NFPA 72, 2010 EDITION AND THE DEPARTMENT OF VETERANS AFFAIRS VA FIRE PROTECTION DESIGN GUIDELINES. COORDINATE FIRE ALARM SYSTEM WITH ALL TRADES TO INSURE PROPER COMPLIANCE WITH NFPA 72 AND TO AVOID CONFLICTS.
- PROGRAM EXISTING EDWARDS EST-3 FACP LOCATED IN ROOM 1D-153 TO ADDRESS NEW FIRE ALARM EQUIPMENT AND DEVICES.
- EXTEND CONDUIT AND WIRING AS REQUIRED. USE METHODS AND MATERIALS SIMILAR TO EXISTING. RUN CONDUIT EXPOSED IN UNFINISHED AREAS. RUN CONDUIT IN CEILINGS AND WALLS IN FINISHED AREAS.
- SPRINKLER HEADS IN ACOUSTICAL TILE CEILINGS SHALL BE INSTALLED IN THE CENTER OF THE CEILING TILES.
- SPRINKLER PIPING SHALL BE INSTALLED WITHIN THE CONDITIONED BUILDING ENVELOPE SUCH THAT IT IS NOT SUBJECT TO FREEZING.
- PROVIDE AUTOMATIC SPRINKLER PROTECTION FOR LINEN AND TRASH CHUTES, IN ACCORDANCE WITH NFPA 13, NFPA 82, AND NFPA 101 STANDARDS.
- SPRINKLERS ARE NOT REQUIRED WITHIN INTERSTITIAL SPACES, PER VA FIRE PROTECTION DESIGN MANUAL, SIXTH EDITION, SEPTEMBER 2011.
- FIRE PROTECTION WORK DURING CONSTRUCTION SHALL COMPLY WITH VA MASTER CONSTRUCTION SPECIFICATION (VAMCS) 01 00 00, GENERAL REQUIREMENTS.
- PROVIDE SPRINKLER PROTECTION UNDER AN ACCESSIBLE FIRST LANDING OF STAIRS AND AT THE TOP OF THE STAIR SHAFTS, IN ACCORDANCE WITH NFPA 13.
- LIMITED STROBE COVERAGE HAS BEEN PROVIDED DUE TO PATIENT SENSITIVITY TO HIGH INTENSITY STROBE ACTIVATION.
- PROVIDE SEMI-RECESSED INSTITUTIONAL SPRINKLER HEADS IN ALL TOILET SPACES FOR THE FIRST AND SECOND FLOORS.
- NO INTERRUPTION OF THE EXISTING SPRINKLER SYSTEM OR FIRE ALARM SYSTEM IS PERMITTED WITHOUT PRIOR PERMISSION OF THE CONTRACTING OFFICER. CONTRACTOR SHALL DEVELOP AN INTERIM FIRE PROTECTION PROGRAM WHERE INTERRUPTIONS OCCUR IN OCCUPIED SPACES. REQUEST IN WRITING AT LEAST ONE WEEK PRIOR TO PLANNED INTERRUPTION.

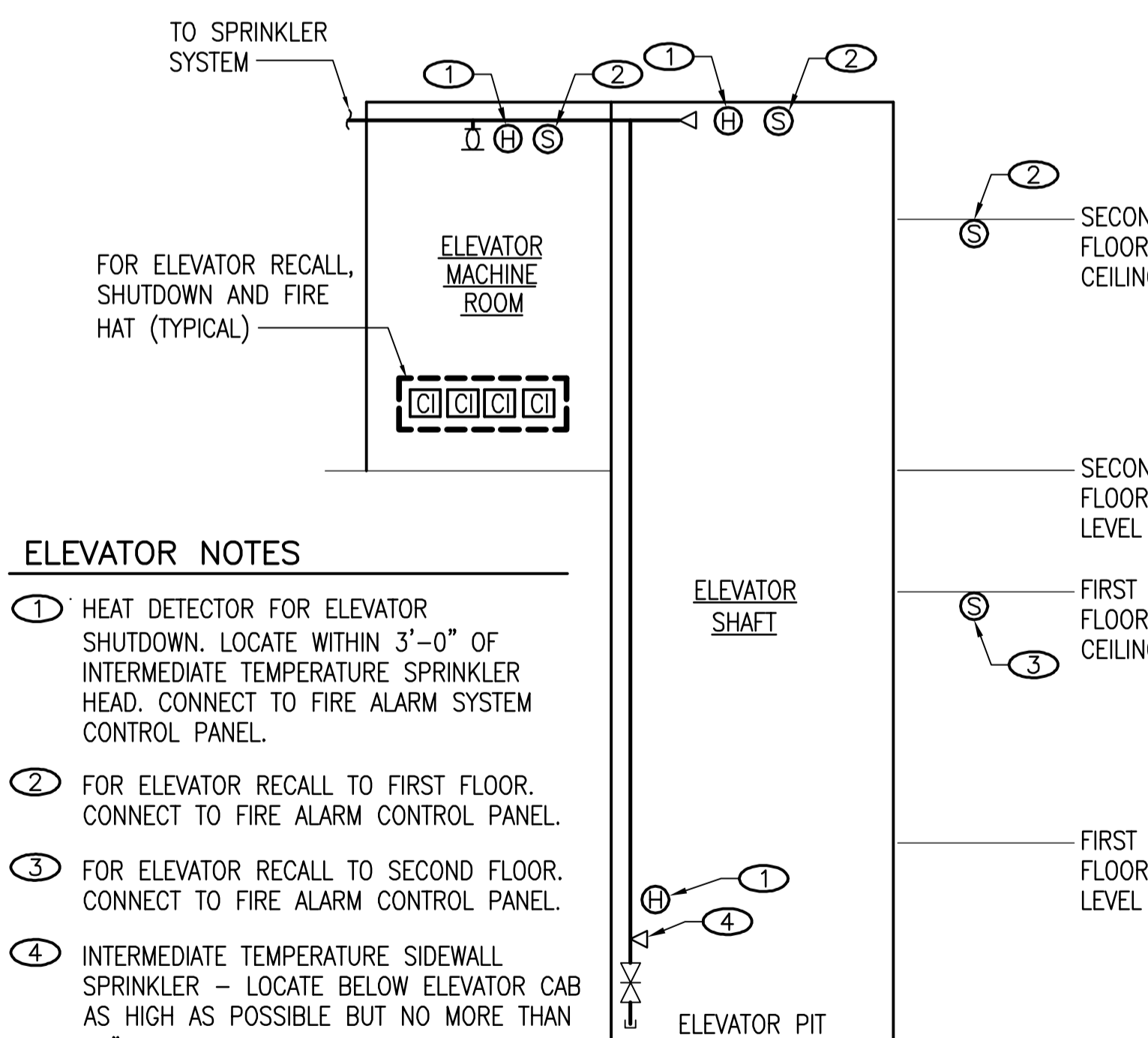
FIRE ALARM RISER NOTES

- THE FIRE ALARM EQUIPMENT SUPPLIER IS RESPONSIBLE FOR PROVIDING ADDITIONAL INDICATING CIRCUITS OR POWER CONTROL MODULES AS REQUIRED TO PROPERLY OPERATE ALL AUDIO/VISUAL REQUIRED APPLIANCES.
- ALL WIRING SHALL BE AS RECOMMENDED BY EQUIPMENT MANUFACTURER.
- FIRE ALARM RISER DIAGRAM IS SHOWN FOR REFERENCE ONLY. LOCATIONS AND QUANTITIES SHALL BE AS SHOWN ON THE FLOOR PLANS. THE FIRE ALARM RISER DIAGRAM DOES NOT NECESSARILY INDICATE THE ACTUAL NUMBER OF ALARM NOTIFICATION APPLIANCE CIRCUITS. THE ACTUAL NUMBER OF APPLIANCE CIRCUITS NECESSARY IS DEPENDENT UPON THE EQUIPMENT MANUFACTURER.
- PROVIDE A REMOTE LED TEST/INDICATOR LIGHT FOR EACH DUCT DETECTOR AND LABEL WHICH AHU IS SERVED.
- PROVIDE SYNCHRONIZATION FOR AREAS WHERE MORE THAN ONE VISIBLE APPLIANCE IS LOCATED.
- CONNECT NOTIFICATION APPLIANCES ON FIRST FLOOR TO EXISTING EST-3 LOCATED IN 1D-153.



FIRE ALARM RISER DIAGRAM

NO SCALE

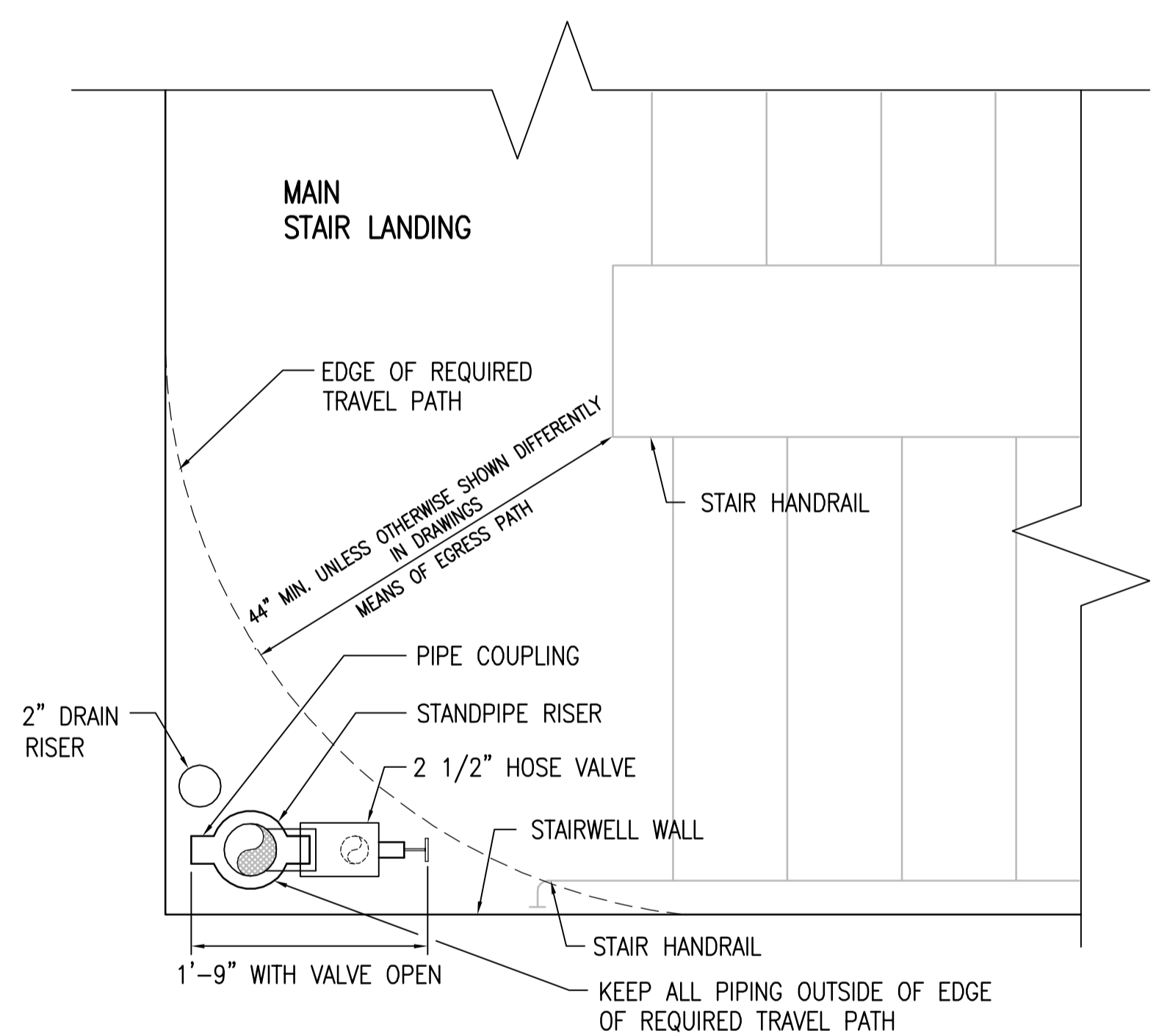


ELEVATOR NOTES

- HEAT DETECTOR FOR ELEVATOR SHUTDOWN. LOCATE WITHIN 3'-0" OF INTERMEDIATE TEMPERATURE SPRINKLER HEAD. CONNECT TO FIRE ALARM SYSTEM CONTROL PANEL.
- FOR ELEVATOR RECALL TO FIRST FLOOR. CONNECT TO FIRE ALARM CONTROL PANEL.
- FOR ELEVATOR RECALL TO SECOND FLOOR. CONNECT TO FIRE ALARM CONTROL PANEL.
- INTERMEDIATE TEMPERATURE SIDEWALL SPRINKLER - LOCATE BELOW ELEVATOR CAB AS HIGH AS POSSIBLE BUT NO MORE THAN 24" ABOVE THE PIT FLOOR.

ELEVATOR FIRE PROTECTION DIAGRAM

NO SCALE



NOTE: THERE SHALL BE NO PIPING, VALVES OR EQUIPMENT RUN LOWER THAN 80" ABOVE THE TOP OF ANY STAIR LANDINGS, EXCEPT FOR FIRE HOSE VALVES.

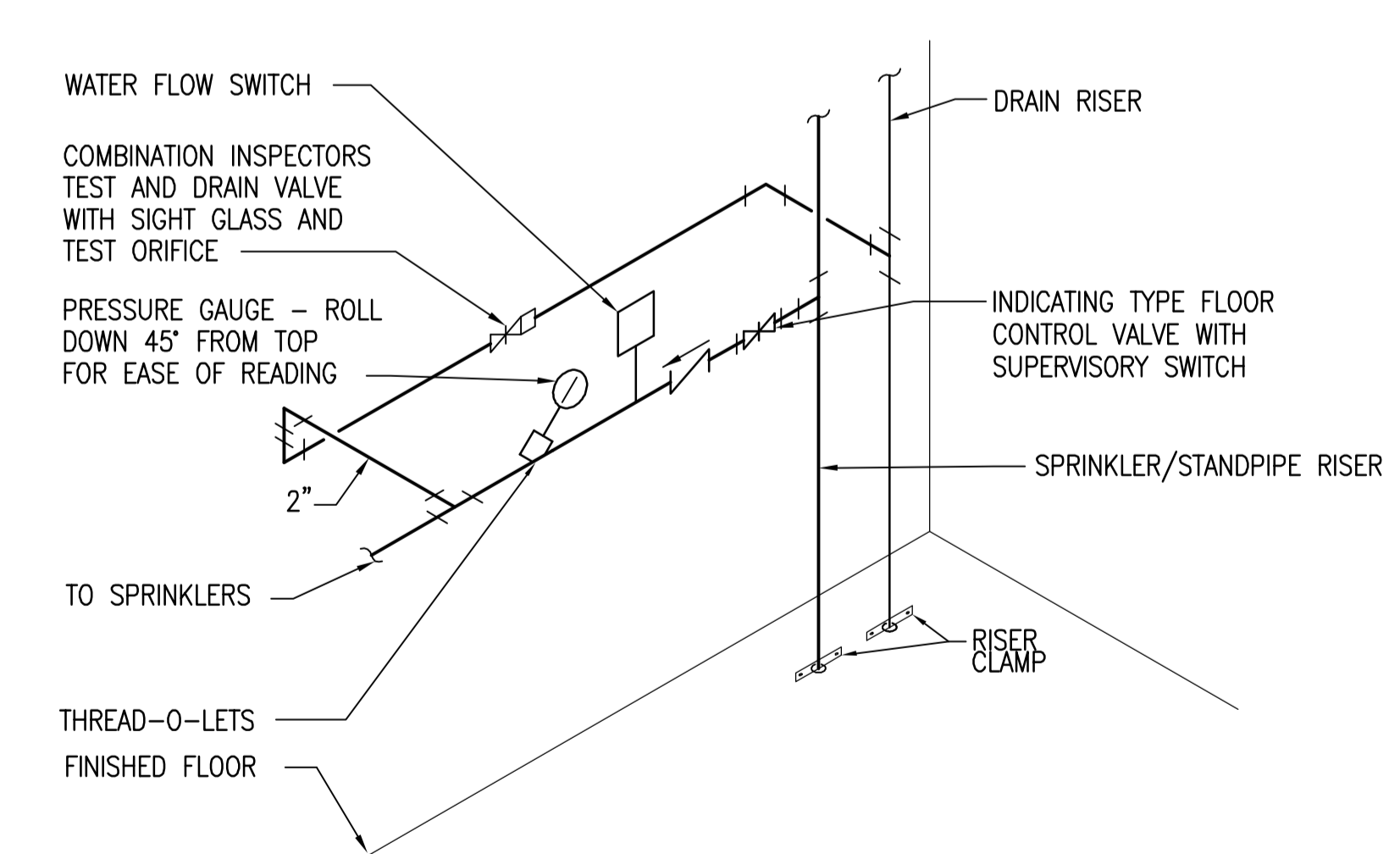
STAIRWELL PIPING - MEANS OF EGRESS DETAIL

NO SCALE

SPRINKLER SYSTEM DESIGN DATA

SPACE	SYSTEM TYPE	OCCUPANCY TYPE	DESIGN DENSITY GPM/SF	DESIGN AREA SF	HOSE STREAM GPM	ESTIMATED TOTAL FLOW RATE GPM *SEE NOTE
ALL OTHERS	WET	LIGHT HAZARD	0.10	1500	100	300
AS NOTED	WET	ORDINARY HAZARD, GROUP 1	0.15	1500	250	540

*NOTE: TOTAL FLOW RATE SHALL BE DETERMINED BY HYDRAULIC CALCULATIONS.

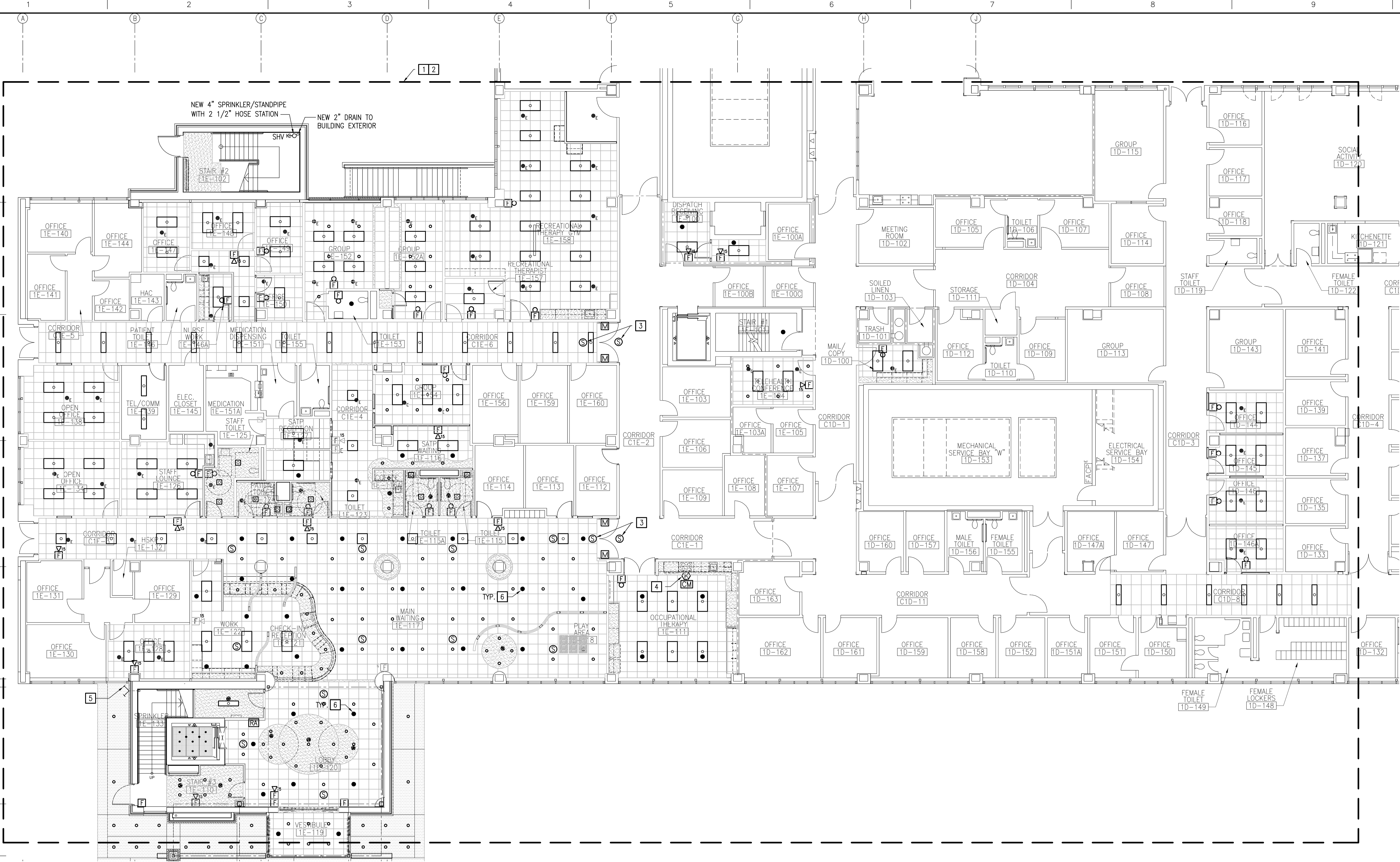


FLOOR CONTROL VALVE ASSEMBLY DETAIL

NO SCALE

FULLY SPRINKLERED

CONSULTANT ENGINEER: 1111 E MAIN STREET, SUITE 1905 RICHMOND, VA 23219 PHONE: 804.644.4690	ARCHITECT: 131 HANBURY ROAD, SUITE C CHESAPEAKE, VA 23322 PHONE: 757.389.5518	Drawing Title LEGEND NOTES AND DETAILS	Project Title Mental Health Recovery Enhancement Center HH McGuire VA Medical Center	Project Number 310	Office of Construction and Facilities Management
		Approved Project Director	Location Richmond, VA	Building Number 500	
Revisions:	Date:	Date 08/24/12 FOR CONSTRUCTION	Checked KEK	Drawn FDJ	



FIRST FLOOR PLAN
1/8"=1'-0"

GENERAL NOTES

- REFER TO SHEET F-001 FOR GENERAL NOTES RELATED TO THIS SHEET.

NOTES

- MODIFY AND EXPAND EXISTING AUTOMATIC FIRE SPRINKLER SYSTEM TO PROVIDE SPRINKLER PROTECTION THROUGHOUT TO ACCOMMODATE FLOOR AND CEILING PLAN CHANGES. MAINTAIN EXISTING SPRINKLER SYSTEM IN OTHER SPACES. MEET THE REQUIREMENTS OF NFPA 13, 2010 EDITION AND THE DEPARTMENT OF VETERANS AFFAIRS VA FIRE PROTECTION DESIGN GUIDELINES.
- INSTALL NEW CHIME/STROBES AND NEW STROBES PER NFPA 72 REQUIREMENTS. RELOCATE AND PROVIDE ADDITIONAL DEVICES, AS NECESSARY TO ACCOMMODATE FLOOR AND CEILING PLAN CHANGES. CONNECT NEW FIRE ALARM DEVICES TO EXISTING EST-3 FIRE ALARM CONTROL PANEL IN ROOM 1D-153.


NOTES (CONTINUED)

- PROVIDE SMOKE DETECTORS AND 24VDC POWER FROM FIRE ALARM CONTROL PANEL FOR MAGNETIC DOOR HOLDERS. LOCATE WITHIN 5'-0" FROM DOORS.
- PROVIDE UL LISTED GUARDIAN 1 RANGE TOP KITCHEN SUPPRESSION SYSTEM WITH ELECTRIC FUEL SHUTOFF, OR APPROVED EQUAL. PROVIDE FIRE ALARM MONITOR MODULE FOR ALARM NOTIFICATION AND EVACUATION UPON SYSTEM ACTIVATION.
- FIRE DEPARTMENT CONNECTION WITH CHECK VALVE AND BALL DRIP.
- NEW SPRINKLERS SHALL BE SEMI-RECESSED, STANDARD RESPONSE, TO MATCH EXISTING SPRINKLERS ON FIRST FLOOR.

FULLY SPRINKLERED

Revisions	Date

CONSULTANT ENGINEER:



1111 E MAIN STREET, SUITE 1905
RICHMOND, VA 23219
PHONE: 804.644.4690

ARCHITECT:



131 HANBURY ROAD, SUITE C
CHESAPEAKE, VA 23322
PHONE: 757.389.5518

Drawing Title
FIRST FLOOR PLAN

Approved Project Director

Project Title
Mental Health Recovery
Enhancement Center
HH McGuire VA Medical Center

Location
Richmond, VA

Date
08/24/12
FOR CONSTRUCTION

Checked
KEK

Drawn
FDJ

Project Number
310
Building Number
500

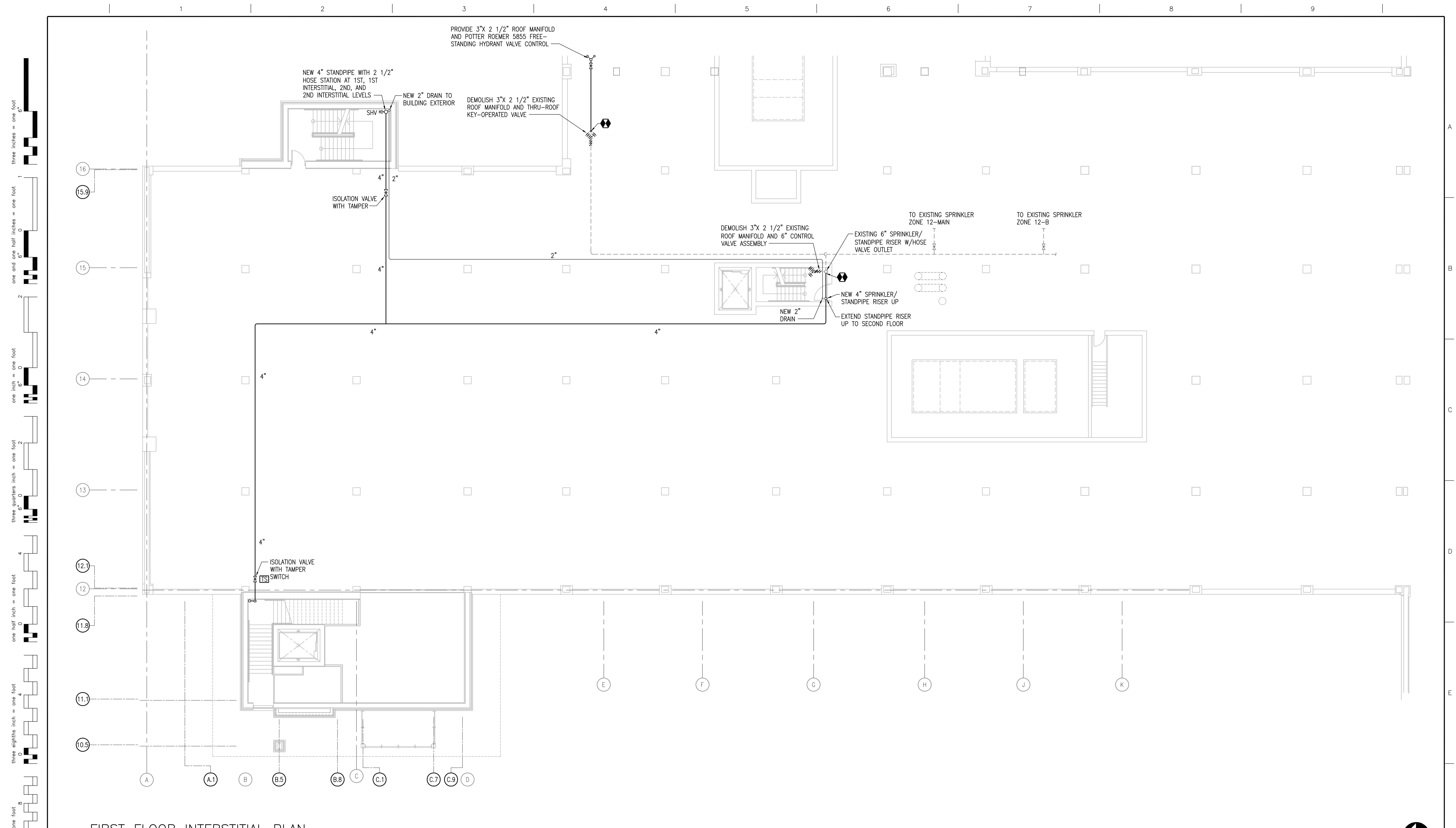
Drawing Number
FP101
XX

**Office of
Construction
and Facilities
Management**



Department of
Veterans Affairs

Scale indicators on the left margin:
 three eighths inch = one foot
 one half inch = one foot
 three quarters inch = one foot
 one quarter inch = one foot
 one eighth inch = one foot



FIRST FLOOR INTERSTITIAL PLAN
1/8"=1'-0"

GENERAL NOTES
1. REFER TO SHEET F-001 FOR GENERAL NOTES RELATED TO THIS SHEET.

CONSULTANT ENGINEER:

90 CELEBRATING 90 YEARS
CLARK • NEXSEN
Architecture & Engineering

1111 E MAIN STREET, SUITE 1905
RICHMOND, VA 23219
PHONE: 804.644.4690

ARCHITECT:

Avetech
design group, plc

131 HANBURY ROAD, SUITE C
CHESAPEAKE, VA 23322
PHONE: 757.389.5518

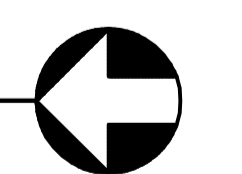
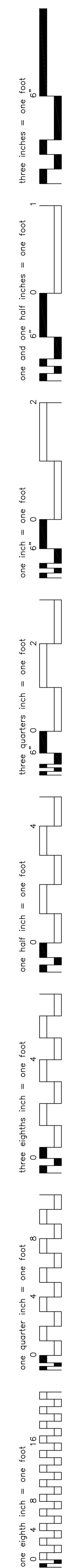
Drawing Title FIRST FLOOR INTERSTITIAL PLAN	
Approved Project Director	

Project Title Mental Health Recovery Enhancement Center HH McGuire VA Medical Center			Project Number 310	
Location Richmond, VA			Building Number 500	
Date 08.24.12 FOR CONSTRUCTION	Checked KEK	Drawn FDJ	Drawing Number FP102 - XX	

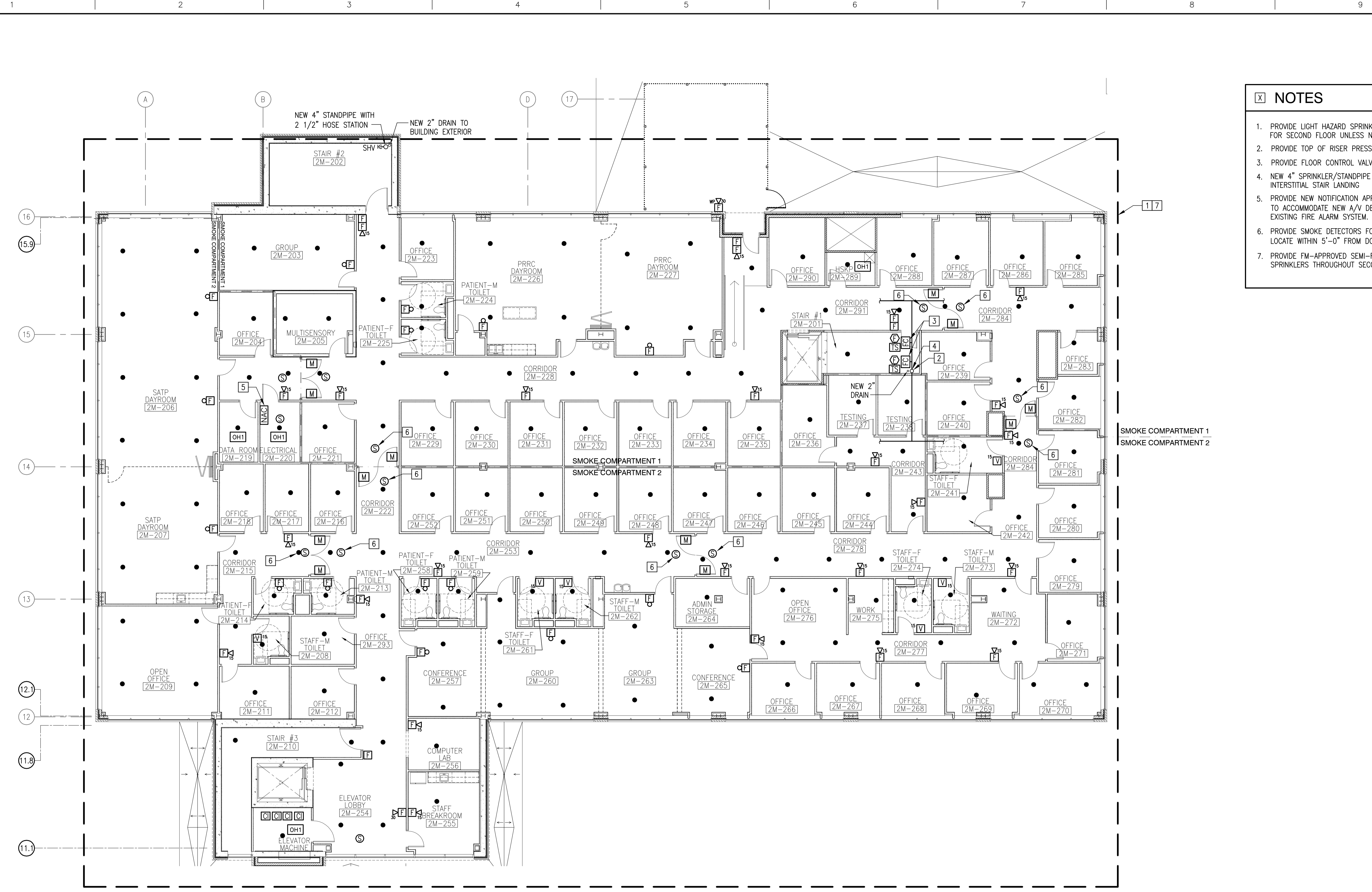
FULLY SPRINKLERED

Office of Construction and Facilities Management

Department of Veterans Affairs



three inches = one foot
 one and one half inches = one foot
 one inch = one foot
 three quarters inch = one foot
 one half inch = one foot
 three eighths inch = one foot
 one quarter inch = one foot
 one eighth inch = one foot



- NOTES**
1. PROVIDE LIGHT HAZARD SPRINKLER PROTECTION THROUGHOUT FOR SECOND FLOOR UNLESS NOTED OTHERWISE.
 2. PROVIDE TOP OF RISER PRESSURE GAUGE WITH SHUT-OFF.
 3. PROVIDE FLOOR CONTROL VALVE ASSEMBLY PER F-001.
 4. NEW 4" SPRINKLER/STANDPIPE RISER FROM FIRST FLOOR INTERSTITIAL STAIR LANDING
 5. PROVIDE NEW NOTIFICATION APPLIANCE CIRCUIT (NAC) PANEL TO ACCOMMODATE NEW A/V DEVICES; COMPATIBLE WITH EXISTING FIRE ALARM SYSTEM.
 6. PROVIDE SMOKE DETECTORS FOR MAGNETIC DOOR HOLDERS. LOCATE WITHIN 5'-0" FROM DOORS.
 7. PROVIDE FM-APPROVED SEMI-RECESSED QUICK RESPONSE SPRINKLERS THROUGHOUT SECOND FLOOR.

SECOND FLOOR PLAN
1/8"=1'-0"

GENERAL NOTES

1. REFER TO SHEET F-001 FOR GENERAL NOTES RELATED TO THIS SHEET.

CONSULTANT ENGINEER:


CLARK NEXSEN
 Architecture & Engineering

1111 E MAIN STREET, SUITE 1905
 RICHMOND, VA 23219
 PHONE: 804.644.4690

ARCHITECT:


Avetech
 design group, plc

131 HANBURY ROAD, SUITE C
 CHESAPEAKE, VA 23322
 PHONE: 757.389.5518

Drawing Title
SECOND FLOOR PLAN

Approved Project Director

Project Title
Mental Health Recovery
Enhancement Center
HH McGuire VA Medical Center

Project Number
310
Building Number
500

Location
Richmond, VA

Date
08.24.12
FOR CONSTRUCTION

Checked
KEK

Drawn
FDJ

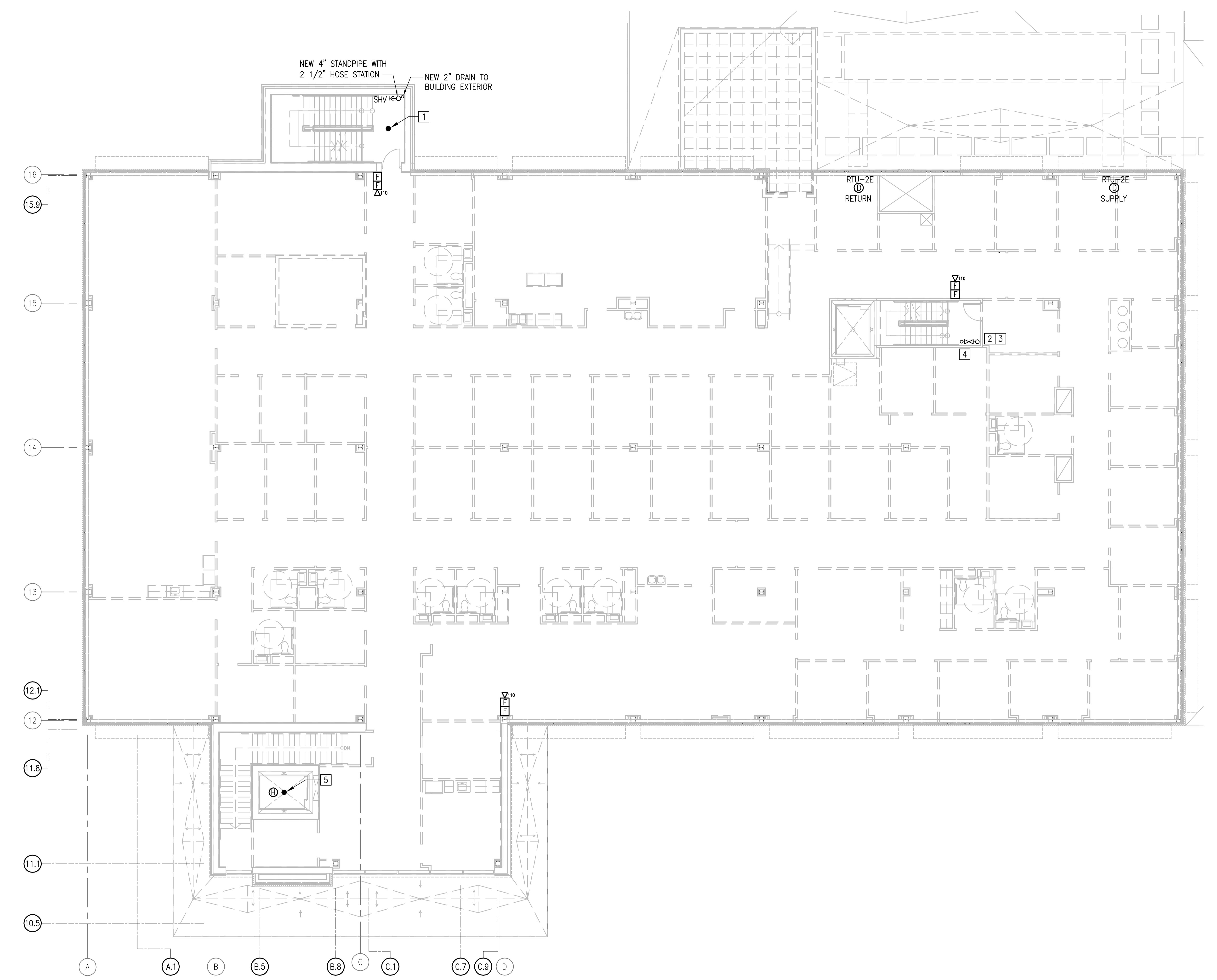
Drawing Number
FP103
- XX

Office of Construction and Facilities Management

 **Department of Veterans Affairs**

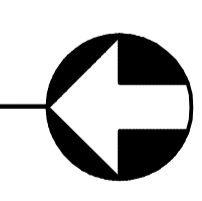
FULLY SPRINKLERED

three inches = one foot
 one and one half inches = one foot
 one inch = one foot
 three quarters inch = one foot
 one half inch = one foot
 three eighths inch = one foot
 one quarter inch = one foot
 one eighth inch = one foot



- NOTES**
1. SPRINKLER TOP OF STAIRWAY FROM SECOND FLOOR CEILING BRANCH LINE EXTENSION.
 2. PROVIDE 2 1/2" FIRE DEPARTMENT HOSE VALVE AT INTERSTITIAL LANDING.
 3. SPRINKLER TOP OF STAIRWAY FROM SECOND FLOOR CONTROL VALVE STATION.
 4. PROVIDE ROOF MANIFOLD WITH 2 1/2" HOSE VALVES AND POTTER ROEMER 5855 FREE-STANDING HYDRANT VALVE CONTROL. PROVIDE MANUAL DRAIN VALVE PIPED TO NEW STAIR RISER.
 5. SEE ELEVATOR FIRE PROTECTION DIAGRAM, SHEET F-001.


SECOND FLOOR INTERSTITIAL PLAN
 1/8"=1'-0"



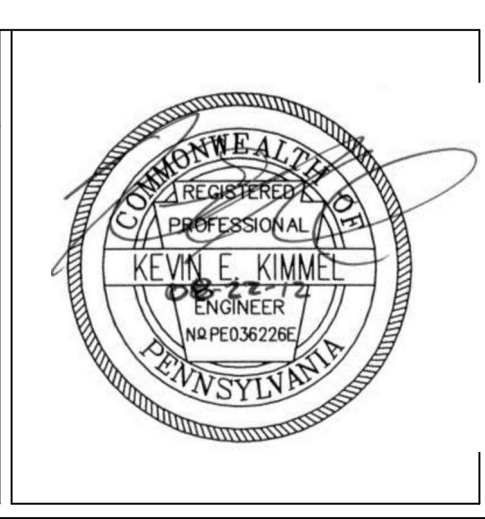
GENERAL NOTES
 1. REFER TO SHEET F-001 FOR GENERAL NOTES RELATED TO THIS SHEET.

Revisions	Date


CONSULTANT ENGINEER:



1111 E MAIN STREET, SUITE 1905
 RICHMOND, VA 23219
 PHONE: 804.644.4690



ARCHITECT:



131 HANBURY ROAD, SUITE C
 CHESAPEAKE, VA 23322
 PHONE: 757.389.5518

Drawing Title SECOND FLOOR INTERSTITIAL PLAN	Project Number 310
Approved Project Director	Building Number 500
Date 08.24.12 FOR CONSTRUCTION	Checked KEK
Drawn FDJ	Drawing Number FP104 - XX

Project Title Mental Health Recovery Enhancement Center HH McGuire VA Medical Center	Location Richmond, VA
Department of Veterans Affairs	Office of Construction and Facilities Management

FULLY SPRINKLERED