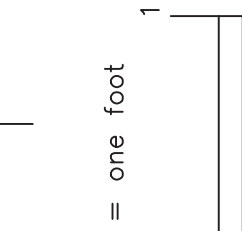


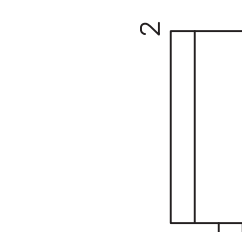
A



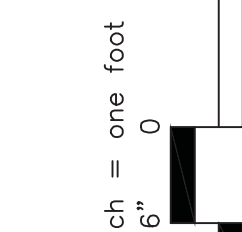
B



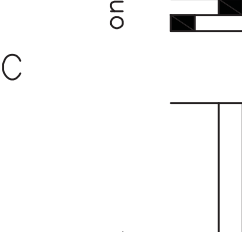
C



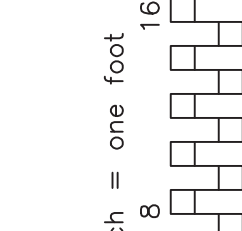
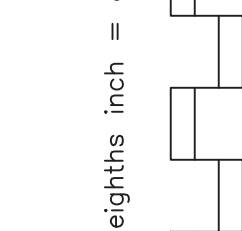
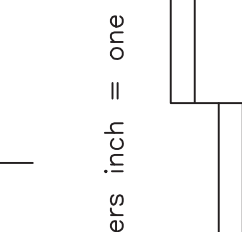
D



E



F



ELECTRICAL LEGEND

SYMBOL	DESCRIPTION	SYMBOL	DESCRIPTION		
LIGHTING					
	DOWNLIGHT LIGHTING FIXTURE		GROUND ROD		
	LINEAR FLUORESCENT LIGHTING FIXTURE		GROUNDING TEST WELL		
	LINEAR FLUORESCENT LIGHTING EMERGENCY FIXTURE		AIR TERMINAL		
	EXIT LIGHTING FIXTURE. ARROW, WHEN USED, INDICATES DIRECTION. TYPE "X" U.O.N. FILLED-IN QUADRANT(S) OF SYMBOL INDICATES NUMBER AND ORIENTATION OF ILLUMINATED FACES.		TELECOM GROUND BAR		
	SINGLE POLE SWITCH, 20 A, 120/277 V.		SERVICE ENTRANCE MASTER GROUND BAR		
	THREE-WAY SWITCH, 20 A, 120/277 V.	EQUIPMENT CONNECTIONS			
	OCCUPANCY SENSOR, WALL MOUNTED.		EQUIPMENT CONNECTION		
	OCCUPANCY SENSOR; ACTUAL QUANTITY, TYPE MOUNTING CONFIGURATION, AND LAYOUT AS RECOMMENDED BY MANUFACTURER. SEE SPECIFICATIONS FOR ADDITIONAL INFORMATION.		MOTOR CONNECTION		
	DAYLIGHTING SENSOR		4" X 4" SQUARE JUNCTION BOX UON		
POWER DEVICES			DISCONNECT SWITCH, 600V IN NEMA 1 ENCLOSURE UON. , 60A = SWITCH RATING, 3P = NO. OF POLES, 40A = FUSE RATING (NF INDICATES NON-FUSIBLE).		
	DUPLEX CONVENIENCE RECEPTACLE, 20 A, 125 VAC, MOUNT 18" AFF UON.		INTEGRAL DISCONNECT/STARTER		
	GFI RECEPTACLE ABOVE COUNTER, MOUNT 48" AFF OR 6" ABOVE BACKSLASH OR COUNTER TOP WHERE COUNTER IS INDICATED.		WALL MOUNTED JUNCTION BOX W/ CONDUIT BUSHING FACEPLATE FOR POWER WHIP CONNECTION TO MODULAR FURNITURE. COORDINATE LOCATION AND FINAL POWER REQUIREMENTS WITH MODULAR FURNITURE VENDOR PRIOR TO INSTALLATION. MT = 18" AFF.		
	DUPLEX CONVENIENCE RECEPTACLE WITH INTERNAL GROUND FAULT PROTECTION. 20 A, 125 VAC.	WIRE, CONDUIT AND RACEWAY			
	DUPLEX CONVENIENCE RECEPTACLE WITH INTERNAL GROUND FAULT PROTECTION. 20 A, 125 VAC. COORDINATE MOUNTING LOCATION WITH EQUIPMENT.		BRANCH CIRCUIT OR FEEDER WIRING IN CONDUIT. PROVIDE 2#12, 1#12 GND, 1/2" UON. TICK MARKS, WHEN SHOWN, INDICATE NUMBER OF #12 CONDUCTORS IF OTHER THAN THREE, (→) INDICATES GROUND.		
	QUADRAPLEX CONVENIENCE RECEPTACLE MOUNTED IN TWO-GANG OUTLET BOX - RATED 20A, 125 VOLTS WITH SINGLE COVER PLATE.		HOMERUNS TO PANEL. PANEL AND CIRCUIT DESIGNATIONS AS INDICATED.		
	JUNCTION BOX UNDER SLAB FOR FUTURE POWER TO FURNITURE. PROVIDE 6" BRANCH CIRCUIT CONDUCTOR PIGTAIL IN JUNCTION BOX FOR FUTURE POWER CONNECTIONS. FINAL BRANCH CIRCUIT CONNECTIONS TO FURNITURE IS BY OTHERS.		CONDUIT TURNED UP		
	JUNCTION BOX UNDER SLAB FOR FUTURE DATA/TELECOM CABLING TO FURNITURE. FINAL CONNECTION TO FURNITURE IS BY OTHERS. ROUTE MIN 1-1/2" TO INTERSTITIAL SPACE. COORDINATE FINAL LOCATION WITH FURNITURE VENDOR PRIOR TO INSTALLATION.		CONDUIT TURNED DOWN		
	SPECIAL PURPOSE RECEPTACLE. RATING AS INDICATED, MOUNT TO SUIT EQUIPMENT.	DISTRIBUTION			
	NEMA 14-50 RANGE OUTLET. PROVIDE 3#6, 1#10GND IN 3/4" C BRANCH CIRCUIT.		PANELBOARD - 480Y/277V		
SYSTEMS			PANELBOARD - 208Y/120V		
	VOICE AND DATA COMM OUTLET	ABBREVIATIONS			
	VOICE WALL COMM OUTLET	A	AMPERE	KWH	KILOWATT HOUR
	DATA COMM OUTLET	A/C	AIR CONDITIONING	KVA	KILOVOLT AMPERE
	VOICE COMM OUTLET	AC	ABOVE COUNTER	LAN	LOCAL AREA NETWORK
	DATA COMM OUTLET MOUNTED IN CEILING. COORDINATE LOCATION PRIOR TO ROUGH-IN.	AFF	ABOVE FINISHED FLOOR	LTG	LIGHTING
	MODULAR FURNITURE VOICE AND DATA FURNITURE FEED OUTLET. PROVIDE JB WALL MOUNTED FOR VOICE/DATA CONNECTION TO INTEGRAL MODULAR FURNITURE VOICE/DATA OUTLET(S). ROUTE MIN 1-1/2" C TO INTERSTITIAL SPACE. COORDINATE FINAL LOCATION WITH FURNITURE VENDOR PRIOR TO INSTALLATION.	AT	AMPERE TRIP	MCB	MAIN CIRCUIT BREAKER
	CATV OUTLET. ROUTE 3/4" C TO CABLE TRAY SERVING SPACE UON.	ATC	AUTOMATIC TEMPERATURE CONTROL	MLO	MAIN LUG ONLY
	48-PORT PATCH PANEL(S)	ATS	AUTOMATIC TRANSFER SWITCH	MT	MOUNT
	110 BLOCK(S)	AWG	AMERICAN WIRE GAUGE	MTD	MOUNTED
	VFVI NETWORK SWITCH	BKBD	BACKBOARD	MTG HT	MOUNTING HEIGHT
	FIBER CABINET ENCLOSURE	BLDG	BUILDING	N/C	NORMALLY CLOSED
	CARD READER	BMS	BALANCED MAGNETIC SWITCH	NF	NON-FUSED
	PA/INTERCOM SPEAKER, FLUSH CEILING MOUNTED WITH BACKCAN AND WHITE SOUND GRILL	BRKR	BREAKER	N/O	NORMALLY OPEN
	PA AMPLIFIER	C	CONDUIT	NEU	NEUTRAL
	VOLUME CONTROLLER	CB	CIRCUIT BREAKER	NIC	NOT IN CONTRACT
	CCTV SECURITY CAMERA. COORDINATE EXACT LOCATION, MOUNTING HEIGHT AND PROVISIONS WITH FACILITY SECURITY CONSULTANT. PROVIDE JUNCTION BOX WITH 3/4" EMPTY CONDUIT TO INTERSTITIAL SPACE CABLE TRAY.	CH	CONTINUOUS HOT	P	POLE
	NURSE CALL	CCTV	CLOSED CIRCUIT TELEVISION	PA	PUBLIC ADDRESS
	NURSE CALL DOME LIGHT, MT ABOVE DOOR WAY UON.	CKT	CIRCUIT	PH	PHASE
	NURSE CALL PANEL	DISC SW	DISCONNECT SWITCH	PNL	PANEL
	DURESS ALARM/ IR SENSOR, MOUNT 42" AFF, ROUTE 3/4" C TO INTERSTITIAL SPACE CABLE TRAY FOR DURESS ALARM WIRING.	DWG	DRAWING	PVC	POLY VINYL CHLORIDE
	DURESS ALARM MASTER STATION, COORDINATE FINAL LOCATION WITH VA PERSONNEL	EC	EMPTY CONDUIT	QTY	QUANTITY
	DURESS ALARM LIGHT	EF	EXHAUST FAN	RE	RELOCATE
		EMT	ELECTRICAL METALLIC TUBING	RF	RETURN FAN
		EQ	EQUIPMENT	RECEPT	RECEPTACLE
		EWC	ELECTRIC WATER COOLER	REQ'D	REQUIRED
		EWB	ELECTRIC WATER HEATER	SC	SPLIT CIRCUIT
		EX	EXISTING TO REMAIN	SF	SUPPLY FAN
		FACP	FIRE ALARM CONTROL PANEL	S/N	SOLID NEUTRAL
		FCU	FAN COIL UNIT	SW	SWITCH
		FF	FURNITURE FEED	TEL	TELEPHONE
		FLA	FULL LOAD AMPS	TGB	TELEPHONE GROUNDING BUSBAR
		FLUOR	FLUORESCENT	TTB	TELEPHONE TERMINAL BOARD
		GFI	GROUND FAULT INTERRUPTER	TR	TELECOMMUNICATIONS ROOM
		GND	GROUND	TV	TELEVISION
		GRS	GALVANIZED RIGID STEEL	UH	UNIT HEATER
		HP	HORSEPOWER	UON	UNLESS OTHERWISE NOTED
		IAW	IN ACCORDANCE WITH	V	VOLTS
		IDS	INTRUSION DETECTION SYSTEM	VAC	VOLTS ALTERNATING CURRENT
		KAIC	THOUSAND AMP INTERRUPTING CAPACITY, RMS SYMMETRICAL	VFCI	VA FURNISHED, CONTRACTOR INSTALLED
		KCMIL	THOUSAND CIRCULAR MILS	VFVI	VA FURNISHED, VA INSTALLED
				W	WIRE
				WH	WATER HEATER
				WP	WEATHERPROOF
				XFMR	TRANSFORMER

ELECTRICAL NOTES

GENERAL		PAGING SYSTEM	
1. PRIORITIZE THE USE OF PRE-EXISTING BRANCH CIRCUITS MADE AVAILABLE DURING THE DEMOLITION PROCESS	29. SEE ES700 SERIES DRAWINGS FOR COMMUNICATIONS AND SPECIAL SYSTEMS DESIGN	63. THE MODIFIED SYSTEM SHALL BE CERTIFIED PRIOR TO ACCEPTANCE & A REVISED WIRING DIAGRAM INDICATING ALL MODIFICATIONS SHALL BE PROVIDED TO THE OWNER.	
2. CIRCUITING DESIGNATIONS INDICATED ON PLANS ARE BASED ON EXISTING PANELBOARD DIRECTORY PER ONSITE FIELD SURVEY AND IS FOR REFERENCE ONLY. FIELD VERIFY AVAILABILITY OF BRANCH CIRCUITS AND RECONFIGURE PANELBOARD CIRCUITING AS REQUIRED FOR A COMPLETE INSTALLATION. WHERE DEEMED FEASIBLE, PRIORITIZE THE USE OF PRE-EXISTING BRANCH CIRCUITING SERVING SPACE.	30. INSTALL CABLING IN ACCORDANCE WITH TIA/EIA 568B.1, B.2 AND ALL LOCAL AND NATIONAL FIRE CODES.	64. CONTRACTOR SHALL VERIFY EXACT LOCATION OF SECURITY "CALL" PUSHBUTTON WITH USER PRIOR TO ROUGH-IN.	
3. VISIT SITE PRIOR TO SUBMISSION OF BID FOR A THOROUGH REVIEW OF EXISTING CONDITIONS THAT MAY AFFECT WORK. CONTRACTOR SHALL NOTIFY ENGINEER OF EXISTING CONDITIONS THAT MAY REQUIRE WORK NOT IDENTIFIED WITHIN DOCUMENTS PRIOR TO BID. COORDINATE WITH VAMC FACILITY ENGINEER WHERE WORK REQUIRES DISRUPTION OF POWER SERVICE OF ANY AREAS OUTSIDE OF AREA OF WORK. PROVIDE A WRITTEN NOTICE TO VAMC FACILITY ENGINEER A MINIMUM OF SEVEN DAYS PRIOR TO OUTAGE INDICATING REQUIRED OUTAGE AND DURATION AS AGREED UPON WITH THE VAMC FACILITY ENGINEER.	31. TELECOM JACKS: DATA JACKS = RJ 45, VOICE JACKS = RJ 11. COORDINATE FINAL VOICE JACK TYPE WITH FACILITY IT PERSONNEL.	PAGING SYSTEM	
4. PROVIDE ONE SET OF REPRODUCIBLE AS-BUILT DOCUMENTS INDICATING ALL DEVIATIONS FROM THE CONTRACT DOCUMENTS. UPDATE PANEL SCHEDULES IN EXISTING PANELBOARDS AFFECTED BY THE PROJECT RENOVATION PER VA DESIGN MANUAL 1.14.9. INDICATING ACCURATE CIRCUIT DESCRIPTION, ROOM LOCATION AND CIRCUIT BREAKER FOR EACH AFFECTED CIRCUIT POSITION. PROVIDE TYPED PANEL SCHEDULES. HAND-WRITTEN PANEL SCHEDULES ARE NOT PERMITTED.	32. DATA AND VOICE OUTLET: QUAD FACEPLATE, PROVIDE 3 DATA JACKS AND 1 VOICE JACK.	65. SPEAKERS AND VOICE CONTROL DEVICE LOCATIONS ARE INDICATED FOR REFERENCE ONLY. COORDINATE FINAL LOCATIONS WITH VAMMC HOSPITAL FACILITY PERSONNEL.	
5. PROVIDE ALL DISCONNECTION AND RECONNECTION OF EXISTING EQUIPMENT REQUIRED BY ALL TRADES.	33. VOICE OUTLET: PROVIDE 1 VOICE JACK.	66. PROVIDE SECOND FLOOR PAGING SYSTEM AND ASSOCIATED COMPONENTS TO MATCH EXISTING FACILITY PAGING SYSTEM.	
6. ALL WORK SHALL COMPLY WITH VA REGULATIONS AND REQUIREMENTS.	34. DATA OUTLET: PROVIDE 2 DATA JACKS.	67. FIRST FLOOR PAGING SYSTEM COMPONENTS SHALL BE RELOCATED AS INDICATED. EXTEND WIRING, ETC., AS REQUIRED FOR A COMPLETE, FUNCTIONING SYSTEM. PROVIDE NEW NURSE CALL COMPONENTS AS REQUIRED FOR A COMPLETE AND OPERABLE SYSTEM.	
7. WHERE WORK DISRUPTS EXISTING CONDITIONS, RESTORE EXISTING EQUIPMENT AND RESTORE ALL WALLS, FLOORS, CEILINGS, ETC. AND TO ORIGINAL CONDITION. REPAIR, PATCHING AND PAINTING OF WALLS, FLOORS AND CEILINGS SHALL BE PROVIDED PER ARCHITECTURAL SPECIFICATIONS. DISCONNECT AND RECONNECT ALL EXISTING EQUIPMENT AND DEVICES TO REMAIN AS REQUIRED TO RESTORE TO EXISTING OPERATING CONDITIONS.	35. PROVIDE HORIZONTAL COMM CABLE HOMERUN TO RESPECTIVE FLOOR LAN ROOM FOR EACH COMM OUTLET JACK SPECIFIED. EXAMPLE: 3 DATA JACKS AND 1 VOICE JACK PER OUTLET = TOTAL OF FOUR (4) HOMERUNS TO RESPECTIVE FLOOR LAN ROOM PATCH PANEL.	68. UPON COMPLETING THE RELOCATION OF VARIOUS COMPONENTS OF THE EXISTING SYSTEM THE CONTRACTOR SHALL PERFORM COMPLETE SYSTEM PRETESTING. AFTER PRETESTING, THE SYSTEM SHALL BE FORMALLY TESTED IN THE PRESENCE OF A GOVERNMENT REPRESENTATIVE. DURING THE EXISTING SYSTEM PRETEST, THE CONTRACTOR SHALL VERIFY THAT THE SYSTEM MODIFICATIONS WERE INSTALLED PROPERLY, AND IS FULLY OPERATIONAL.	
8. PROVIDE ONE SET OF REPRODUCIBLE AS-BUILT DOCUMENTS INDICATING ALL DEVIATIONS FROM THE CONTRACT DOCUMENTS. UPDATE PANEL SCHEDULES IN EXISTING PANELBOARDS AFFECTED BY THE PROJECT RENOVATION PER VA DESIGN MANUAL 1.14.9. INDICATING ACCURATE CIRCUIT DESCRIPTION, ROOM LOCATION AND CIRCUIT BREAKER FOR EACH AFFECTED CIRCUIT POSITION. PROVIDE TYPED PANEL SCHEDULES. HAND-WRITTEN PANEL SCHEDULES ARE NOT PERMITTED.	36. PROVIDE BLUE CABLING FOR VOICE AND YELLOW FOR DATA. PROVIDE 4-PAIR CAT 6 PLENUM RATED COMM HORIZONTAL CABLES FOR DATA AND VOICE.	69. ACCEPTANCE TESTING: THE CONTRACTOR SHALL NOTIFY THE RESIDENT ENGINEER IN WRITING SEVEN DAYS AFTER THE PRETEST HAS BEEN COMPLETED AND 30 DAYS PRIOR TO THE DATE ACCEPTANCE TESTING IS EXPECTED TO BEGIN. THE SYSTEM SHALL BE TESTED IN THE PRESENCE OF A GOVERNMENT REPRESENTATIVE. THE CONTRACTOR SHALL VERIFY THAT THE TOTAL EXISTING SYSTEM IS FULLY OPERATIONAL.	
DEMOLITION	37. TELECOM RACK: 19"x7" 45U STANDARD FLOOR MOUNT RACK (BASIS OF DESIGN = B-LINE SB556084XUFB). PROVIDE WITH RACK ANCHOR KIT (BASIS OF DESIGN = B-LINE SB5888A). PROVIDE WITH MINIMUM TWO (2) VERTICAL CABLE MANAGERS (BASIS OF DESIGN = PANDUIT WMP45E) AND HORIZONTAL CABLE MANAGERS AS REQUIRED (BASIS OF DESIGN = PANDUIT)	FIRE ALARM SYSTEM	
11. EQUIPMENT INDICATED FOR DEMOLITION, SUCH AS LIGHTING FIXTURES, WIRING DEVICES, CONDUITS, ETC., SHOWN ON PLANS ARE TO BE COMPLETELY REMOVED. CUT/CAP CONDUITS AT THE AREA OF WORK PERIMETER AND REMOVE CONDUIT WITHIN THE WORK AREA, DISCONNECT WIRING AT THE OVERCURRENT PROTECTIVE DEVICE AND REMOVE WIRING COMPLETELY FROM THE ABANDONED CONDUITS.	40. FIBER CABINET ENCLOSURE: 4U RACK SPACE, 144 MAX DENSITY, BASIS OF DESIGN = CORNING #CCH-04U. PROVIDE WITH SM, LC FIBER CABINET ENCLOSURE CONNECTOR PANELS, BASIS OF DESIGN = CORNING #CCH-CP24-A8.	70. REFER TO FIRE PROTECTION PLANS FOR FIRE ALARM SYSTEM DESIGN AND DEVICE LAYOUT.	
12. REMOVE ALL ACCESSIBLE ABANDONED WIRING OF ALL TYPES, OR CAP AND LABEL IN JUNCTION BOX FOR RE-USE, IN COMPLIANCE WITH THE NATIONAL ELECTRIC CODE.	41. 110-BLOCK(S): ICC 100-PAIR WIRING BLOCKS WITH LEGS. IC110WF100 OR EQUAL.	DURESS ALARM SYSTEM	
13. MAINTAIN BRANCH CIRCUIT CONTINUITY AND/OR RESTORE, IF INTERRUPTED, ALL CONDUITS AND CONDUCTORS PASSING THROUGH RENOVATED AREAS AND SERVING UNDISTURBED AREAS NOT IN THE SCOPE OF WORK.	42. 48-PORT PATCH PANEL(S): 48-PORT, CAT6 RACK MOUNT TIA568A/B PATCH PANEL, LEVITON 69586-U48-LEV OR EQUAL. LABEL EACH PORT OF 48-PORT PATCH PANEL WITH CORRESPONDING COMM OUTLET COMM JACK LABEL LOCATION.	71. PROVIDE A COMPLETE AND OPERABLE DURESS ALARM SYSTEM WITH THE FOLLOWING FEATURES: 71.1. BASIS OF DESIGN: SIMPLEXGRINNELL EZ CARE VITAL TOUCH IR/RF STAFF DURESS/LOCATOR ALERT SYSTEM 71.2. IR SENSORS PLACED IN ROOMS WHERE INDICATED ON PLANS. 71.3. RF SENSORS PLACED AS REQUIRED PER MANUFACTURER'S RECOMMENDATIONS. 71.4. DURASS ALARM MASTER STATION: VITAL TOUCH PC BASED MASTER STATION TO BE LOCATED IN FIRST FLOOR OUTPATIENT MENTAL HEALTH UNIT TO ANNUNCIATE STAFF DURESS CALLS. COORDINATE FINAL LOCATION WITH VA PERSONELL PRIOR TO INSTALLATION. 71.5. INTEGRATE SYSTEM WITH EXISTING HOSPITAL WIDE DURESS ALARM SYSTEM. NEW OUTPATIENT MENTAL HEALTH UNIT SHALL ANNUNCIATE AT THE MCGUIRE VA HOSPITAL POLICE DISPATCH DESK. 71.6. PROVIDE ALL EQUIPMENT TERMINATIONS AND CABLE INSTALLATIONS AS RECOMMENDED BY MANUFACTURER 71.7. PROVIDE CONDUIT/RACEWAYS, JUNCTION BOXES, NETWORK CONNECTIONS, PATCHING, PAINTING, FIRE CAULKING, AND WALL REPAIR AS REQUIRED FOR A COMPLETE INSTALLATION. 71.8. PROVIDE SYSTEM WITH FIPS COMPLIANCE. 72. UPON COMPLETING THE RELOCATION OF VARIOUS COMPONENTS OF THE EXISTING SYSTEM THE CONTRACTOR SHALL PERFORM COMPLETE SYSTEM PRETESTING. AFTER PRETESTING, THE SYSTEM SHALL BE FORMALLY TESTED IN THE PRESENCE OF A GOVERNMENT REPRESENTATIVE. DURING THE EXISTING SYSTEM PRETEST, THE CONTRACTOR SHALL VERIFY THAT THE SYSTEM MODIFICATIONS WERE INSTALLED PROPERLY, AND IS FULLY OPERATIONAL. 73. ACCEPTANCE TESTING: THE CONTRACTOR SHALL NOTIFY THE RESIDENT ENGINEER IN WRITING SEVEN DAYS AFTER THE PRETEST HAS BEEN COMPLETED AND 30 DAYS PRIOR TO THE DATE ACCEPTANCE TESTING IS EXPECTED TO BEGIN. THE SYSTEM SHALL BE TESTED IN THE PRESENCE OF A GOVERNMENT REPRESENTATIVE. THE CONTRACTOR SHALL VERIFY THAT THE TOTAL EXISTING SYSTEM IS FULLY OPERATIONAL. 74. COORDINATE FINAL INSTALLATION REQUIREMENTS WITH VA MCGUIRE FACILITY ENGINEER.	
POWER	43. PROVIDE FINAL TERMINATIONS FOR HORIZONTAL AND BACKBONE CABLING.		
14. PROVIDE FINAL CONNECTION TO MODULAR WORKSTATION SYSTEMS FURNITURE AFTER MODULAR FURNITURE IS INSTALLED. COORDINATE POWER CONNECTION REQUIREMENTS WITH MODULAR WORKSTATION SYSTEMS FURNITURE VENDOR PRIOR TO INSTALLATION.	44. PER SPEC SECTION 271500, TEST ALL COMM CABLING TO ENSURE TERMINATIONS AND CABLING ARE IN WORKING CONDITION. TEST RESULTS SHALL BE APPROVED BY THE VA FACILITY IT MANAGER PRIOR TO CLOSE OUT OF PROJECT.		
15. FOR ACCIDENT PREVENTION, ALL RECEPTACLES SHALL BE INSTALLED WITH THE GROUND PIN UP.	45. PROVIDE MINIMUM 6' OF COMM CABLING SLACK AT LAN ROOM PATCH PANEL.		
16. RECEPTACLES, WALL MOUNTED OCCUPANCY SENSORS AND TOGGLE SWITCH COVER PLATES SHALL BE PROVIDED WITH A LABEL THAT INDICATES THE PANELBOARD AND CIRCUIT NUMBER THAT SERVES EACH DEVICE.	46. SUPPORT COMM CABLING WITH J-HOOKS SPACED AT MAX 48" INTERVALS WHERE NOT ROUTED IN CABLE TRAYS.		
17. DEVICE PLATES INSTALLED IN WET LOCATIONS SHALL BE GASKETED AND UL LISTED FOR "WET LOCATIONS".	47. AT EACH COMMUNICATION OUTLET, PROVIDE A 4" SQUARE JUNCTION BOX WITH 1" CONDUIT ROUTED TO INTERSTITIAL SPACE CABLE TRAY SERVING SPACE UON.		
18. PROVIDE IDENTIFICATION OF PANEL AND CIRCUIT NUMBER ON DEVICE PLATE USING 1/8" HIGH BLACK LETTERS (#10 SIZE), WITH A TIMES NEW ROMAN FONT, IN ALL CAPITALS AND BOLD ON POLYESTER ADHESIVE-TAPE, 1.77" WIDE X 0.59" HIGH.	48. PROVIDE PULL STRINGS IN ALL EMPTY CONDUIT.		
19. WIRE AND CONDUIT FOR MOTOR AND EQUIPMENT LOADS SHALL BE CONTINUOUS IN SIZE FROM SOURCE TO FINAL CONNECTION.	49. CONTRACTOR SHALL PROVIDE CONDUIT SYSTEMS, GROUNDING AND 120V POWER REQUIRED FOR PROGRAM REQUIRED COMMUNICATIONS AND SECURITY SYSTEMS. COORDINATE WITH RESPECTIVE VENDOR. PROVIDE ALL JUNCTION BOXES, CONDUIT, SLEEVES AND CONDUIT ACCESS TO DOORS AND DEVICES AS REQUIRED FOR EQUIPMENT AND CABLING.		
20. FOR NEW-TO-EXISTING CONNECTIONS, PROVIDE MATERIALS (JUNCTION BOXES, CONDUIT, WIRE, ETC.) AND LABOR AS REQUIRED FOR A COMPLETE AND OPERABLE SYSTEM INSTALLATION.	50. MOUNT DEVICES 18" AFF UON ON PLANS OR SPECIFICATIONS		
21. COORDINATE EXACT LOCATION OF CEILING MOUNTED LIGHTING FIXTURES, RECEPTACLES, AND SPEAKERS WITH ARCHITECTURAL REFLECTED CEILING PLANS.	LIGHTING AND LIGHTING CONTROL SYSTEM		
22. FIRE STOP ALL FIRE RATED WALL AND FLOOR PENETRATIONS TO MEET CODE REQUIREMENTS. ANY OPENINGS CREATED IN A FIRE OR SMOKE RATED WALL BY PROVISION OF ANY ELECTRICAL DEVICE OR CONDUIT, SHALL BE SEALED WITH A UL APPROVED FIRE/SMOKE SEALANT APPROPRIATE TO RE-ESTABLISH THE PREVIOUS RATING OF THE WALL. SEE G101 FOR FIRE RATED WALLS/FLOORS AND RATING.	51. PROVIDE LIGHT FIXTURES PER LIGHTING FIXTURE SCHEDULE OR EQUAL, TO MATCH VAMC MCGUIRE HOSPITAL STANDARDS WHERE SPECIFIC FACILITY STANDARDS EXIST.		
23. PROVIDE VA STANDARD SWITCHES, RECEPTACLES AND COVERPLATES UON. COORDINATE FINISH REQUIREMENTS WITH ARCHITECT.	52. PROVIDE THE FINAL LIGHTING CONTROL SYSTEM PROGRAMMING. COORDINATE THE FINAL SYSTEM PROGRAMMING REQUIREMENTS WITH END USER AND MANUFACTURER PRIOR TO CLOSE OUT OF PROJECT.		
24. ALL CONDUIT SHALL BE CONCEALED UON. MINIMUM CONDUIT SIZE SHALL BE 1/2" CONDUIT. MINIMUM HOMERUN CONDUIT SIZE SHALL BE 3/4".	53. BRANCH CIRCUITING TO EXIT LIGHTS AND EGRESS LIGHTING SHALL BE CONTINUOUS, UN-SWITCHED, AND CONNECTED AHEAD OF ANY LIGHTING CONTROL DEVICES, UON.		
25. MOUNT DEVICES AS INDICATED ON AE002.	54. PROVIDE A CONTINUOUS PHASED CONDUCTOR TO ALL EGRESS LIGHTING, EXIT SIGNS, AND EMERGENCY LIGHTING BATTERY BACK UP UNITS FROM THE SAME PANEL BOARD SERVING THE LIGHTING IN THE SAME AREA.		
26. PROVIDE WEATHERPROOF RECEPTACLES WITH GFI.	55. PROVIDE COMPONENTS, LOW VOLTAGE CONNECTIONS, WIRING, AND ACCESSORIES FOR A COMPLETE INSTALLATION PER MANUFACTURERS RECOMMENDATIONS.		
GROUNDING	56. PROVIDE SHOP DRAWINGS INCLUDING A MINIMUM OF THE FOLLOWING: 56.1. WIRING CONTROL DIAGRAMS 56.2. SYSTEM DEVICE AND COMPONENT CUTSHEETS 56.3. SYSTEM ZONE CONTROL AND CIRCUITING SCHEDULES		
27. WHERE UTILIZED FOR CONNECTION TO RECEPTACLES OR EQUIPMENT, FLEXIBLE CABLE SHALL HAVE EQUIPMENT GROUND WIRE AND THE METALLIC SHEATH ASSEMBLY SHALL BE LISTED FOR USE AS AN EQUIPMENT GROUNDING RETURN PATH PER NEC ARTICLE 517.	NURSE CALL SYSTEMS		
28. PROVIDE A SEPARATE GREEN INSULATED GROUND WIRE IN ALL CONDUIT. PROVIDE REDUNDANT GROUND PATH FOR CIRCUITING TO ALL RECEPTACLES AND EQUIPMENT PER NEC ARTICLE 517.	57. PROVIDE SECOND FLOOR NURSE CALL SYSTEM AND ASSOCIATED COMPONENTS TO MATCH EXISTING FACILITY NURSE CALL SYSTEM.		
COMMUNICATIONS AND SYSTEMS	58. EXISTING FIRST FLOOR NURSE CALL SYSTEM & COMPONENTS (WESTCOM 8000) SHALL REMAIN UNLESS INDICATED TO BE REMOVED OR RELOCATED.		
	59. EXTEND WIRING (IN CONDUIT) FROM FORMER LOCATION OF DEVICE & CONNECT.		
	60. EXISTING DEVICES & COMPONENTS REMOVED & NOT RELOCATED SHALL BE TURNED OVER TO THE OWNER.		
	61. UPON COMPLETING THE RELOCATION OF VARIOUS COMPONENTS OF THE EXISTING SYSTEM BY A REPRESENTATIVE OF THE MANUFACTURER THE REPRESENTATIVE SHALL ALIGN AND BALANCE THE SYSTEM AND PERFORM COMPLETE SYSTEM PRETESTING. AFTER PRETESTING, THE SYSTEM SHALL BE FORMALLY TESTED IN THE PRESENCE OF A GOVERNMENT REPRESENTATIVE. DURING THE EXISTING SYSTEM PRETEST, THE CONTRACTOR SHALL VERIFY THAT THE SYSTEM MODIFICATIONS WERE INSTALLED PROPERLY AND IS FULLY OPERATIONAL.		
	62. ACCEPTANCE TESTING: THE CONTRACTOR SHALL NOTIFY THE RESIDENT ENGINEER IN WRITING SEVEN DAYS AFTER THE PRETEST HAS BEEN COMPLETED AND 30 DAYS PRIOR TO THE DATE		

A

B

C

D

E

F

FULLY SPRINKLERED

Revisions

Date

CONSULTANT ENGINEER:

CELEBRATING 90 YEARS

CLARK • NEXSEN

Architecture & Engineering

1111 E MAIN STREET, SUITE 1905
RICHMOND, VA 23219
PHONE: 804.644.4690

COMMONWEALTH OF VIRGINIA

HAROLD L. BELYEU, JR.

Lic. No. 49637

8/24/12

PROFESSIONAL ENGINEER

ARCHITECT:

A

Avetech

design group, plc

131 HANBURY ROAD, SUITE C
CHESAPEAKE, VA 23322
PHONE: 757.389.5518

Drawing Title

ELECTRICAL LEGEND
NOTES AND
SCHEDULES

Approved Project Director

Project Title

Mental Health Recovery
Enhancement Center
HH McGuire VA Medical Center

Location

Richmond, VA

Date

08/24/12
FOR CONSTRUCTION

Checked

JM

Drawn

HLB

Project Number

310

Building Number

500

Drawing Number

ES001

Office of
Construction
and Facilities
Management

Department of
Veterans Affairs

VA FORM 08-6231

1

2

3

4

5

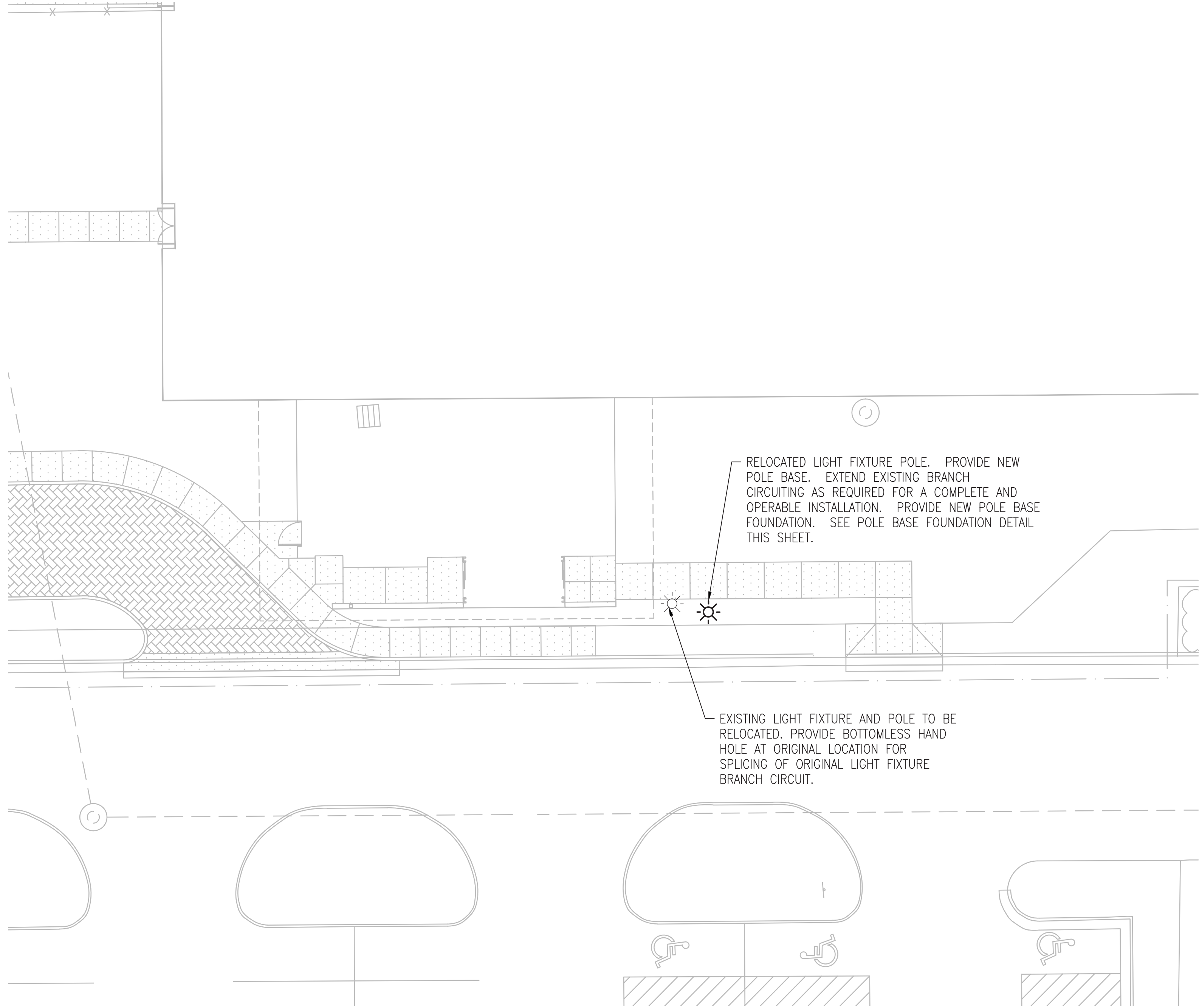
6

7

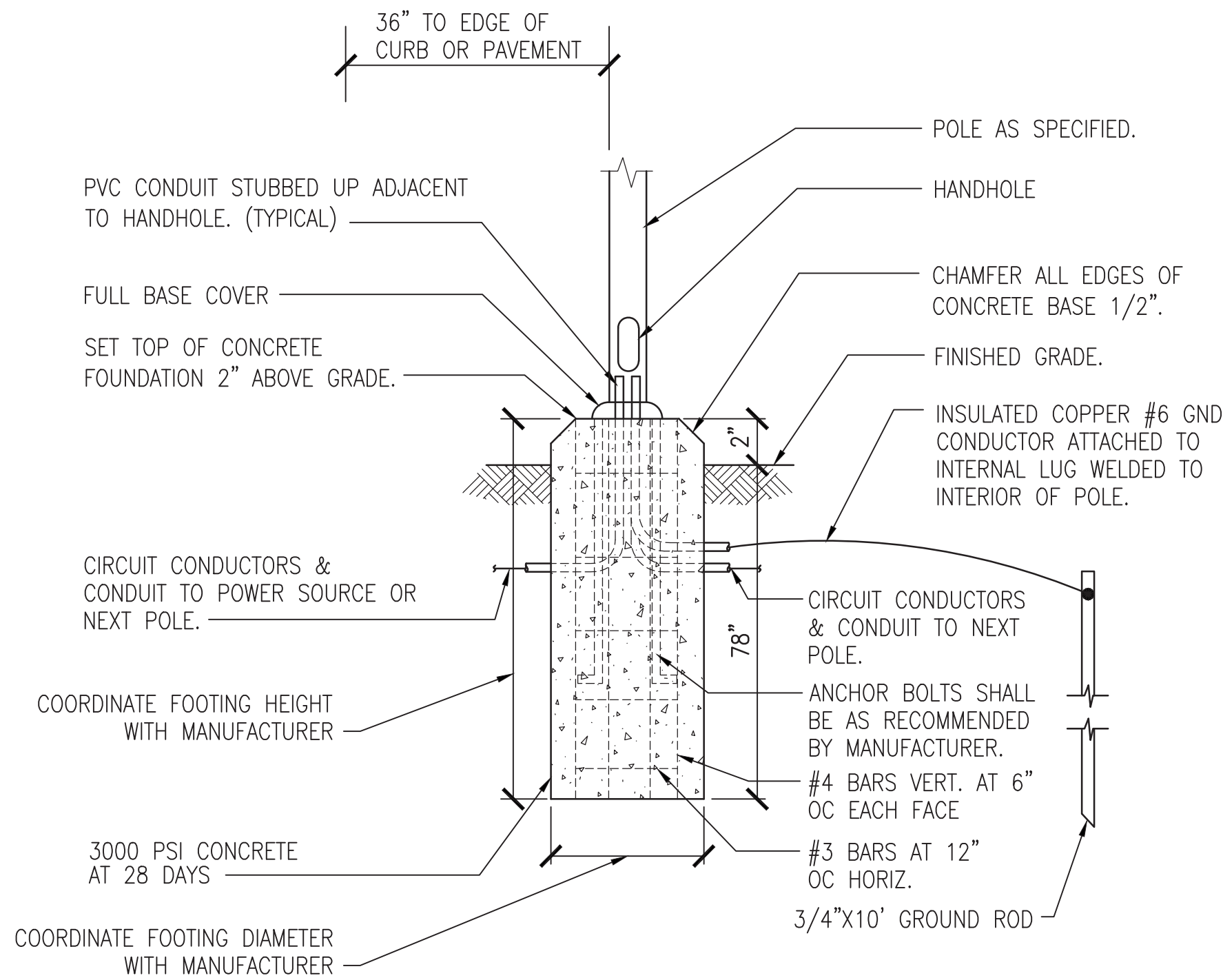
8

9

three inches = one foot
one and one half inches = one foot
one inch = one foot
three quarters inch = one foot
one half inch = one foot
three eighths inch = one foot
one quarter inch = one foot
one eighth inch = one foot



SITE PLAN — ELECTRICAL
1"=1'-0"



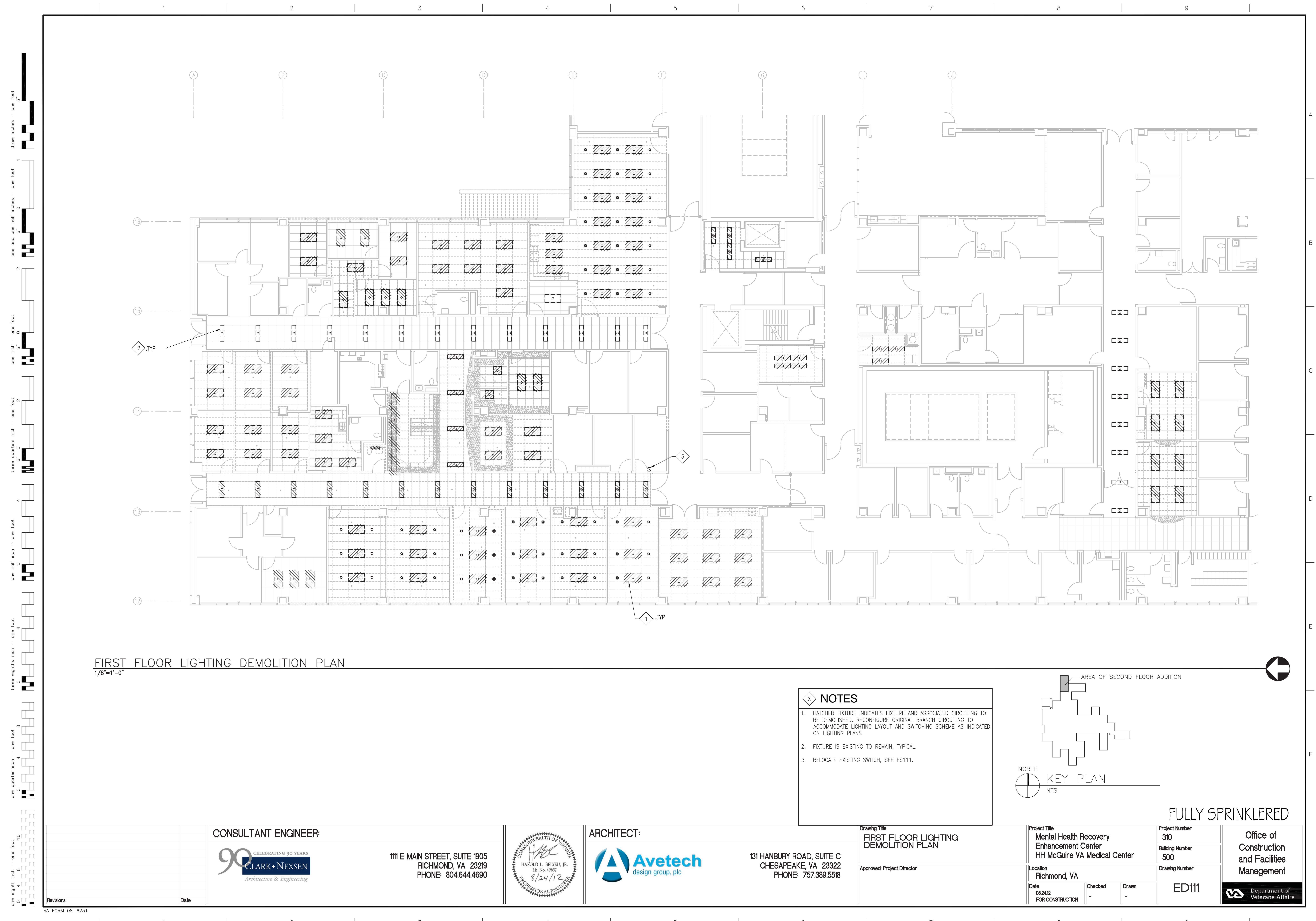
POLE BASE FOUNDATION DETAIL

SCALE: NONE

MARK	DESCRIPTION	SPECIFICATION (OR EQUAL)	LOCATION	VOLTS	LAMP
A	INTERIOR 2-LAMP 2'X4' LINEAR FLUORESCENT INDIRECT/DIRECT FIXTURE WITH MULTI-VOLT PROGRAM START ELECTRONIC BALLAST.	LITHONIA 2AV-G-2-28T5-MDR-MVOLT-GE810PS	OFFICES, GROUP THERAPY ROOMS, CONFERENCE, OPEN OFFICE	277	(2) F28T5/835
AE	SAME AS TYPE "A" EXCEPT WITH EMERGENCY BATTERY BACKUP UNIT	LITHONIA 2AV-G-2-28T5-MDR-MVOLT-GE810PS EL14	SAME AS TYPE "A"	277	(2) F28T5/835
B	INTERIOR 2-LAMP 2'X2' LINEAR FLUORESCENT INDIRECT/DIRECT FIXTURE WITH DUAL ELECTRONIC BALLAST FOR EACH LAMP	LITHONIA 2AV-G-2-14T5-MDR-MVOLT-GE810PS	OFFICES, GROUP THERAPY ROOMS, CONFERENCE, OPEN OFFICE	277	(2) F14T5/835
BE	SAME AS TYPE "B" EXCEPT WITH EMERGENCY BATTERY BACKUP UNIT	LITHONIA 2AV-G-2-14T5-MDR-MVOLT-GE810PS EL14	SAME AS TYPE "B"	277	(2) F14T5/835
C	INTERIOR 1-LAMP 6" APERTURE LED DOWNLIGHT WITH CLEAR SEMI-SPECULAR REFLECTOR	LITHONIA L7XLED T24-GSKT-REAL6 D6AZ	1ST FLOOR LOBBY/ENTRANCE, OFFICES, GROUP THERAPY ROOMS, CONFERENCE, OPEN OFFICE, VESTIBULE, EXTERIOR GYP CANOPY	277	LED
CE	SAME AS TYPE "C" EXCEPT WITH EMERGENCY BATTERY BACKUP UNIT	LITHONIA L7XLED T24-GSKT-REAL6 D6AZ	SAME AS TYPE "C"	277	LED
D	INTERIOR 2-LAMP 2'X2' LINEAR FLUORESCENT FIXTURE WITH ACRYLIC LENS	LITHONIA 2LT2 33L FW A19 D38 LP835 NX	CORRIDORS	277	LED
DE	SAME AS TYPE "D" EXCEPT WITH EMERGENCY BATTERY BACKUP UNIT	LITHONIA 2LT2 33L FW A19 D38 LP835 NX EL14L	SAME AS TYPE "D"	277	LED
FE	INTERIOR 1-LAMP 1 FOOT LINEAR FLUORESCENT SEMI-DIRECT WALL MOUNT UPLIGHT WITH EMERGENCY BATTERY BACKUP BALLAST	LITHONIA CRW7-1-54T5HO-WHR-4-R4-120-GE810-EL-S CT-LLP-C110	LOBBY STAIRWELL TO UPPER FLOOR	277	(1) 24T5HO
GE	INTERIOR 2-LAMP LENSED WALLMOUNT LENSED FIXTURE WITH TAMPER-RESISTANT SCREWS AND EMERGENCY BATTERY PACK	LITHONIA VSL-2-32-MVOLT-GE810IS-ELDW	STAIRWELL #2	277	(2) F32T8/820
H	EXTERIOR LED WALLPACK LUMINAIRE	LITHONIA WSQ LED 1 10A700 SR3 277 ELCW DOBXD	ROOF GARDEN, STAIRWELL EGRESS LIGHTING	277	LED
J	INTERIOR 2-LAMP FLUORESCENT FIXTURE WITH #187 HIGH IMPACT POLYCARBONITE LENS AND TAMPER-PROOF HARDWARE	NEW STAR LIGHTING # 57M111-J-J-126-1-1/D-UN-WL	RESTROOMS	277	(1) F26 CFL
S	INTERIOR, 2-LAMP UTILITY STRIP FIXTURE	LITHONIA C-2-32-MVOLT-GE810IS	ELEC CLOSET, TELE CLOSET, UTILITY ROOMS	277	(2) F32T8/820
SE	SAME AS TYPE "S" EXCEPT WITH EMERGENCY BATTERY BACKUP			277	(2) F32T8/820
V	VAPORTIGHT GLASS GLOBE FIXTURE WITH CAGE HOUSING	LITHONIA OVT 150 SERIES	ELEVATOR PIT	120	
X	LED SELF-POWERED EXIT SIGN WITH RED LETTERS, BRUSHED ALUMINUM HOUSING, AND TAMPER-RESISTANT SCREWS	LRE SERIES	THROUGH OUT SPACE	277	

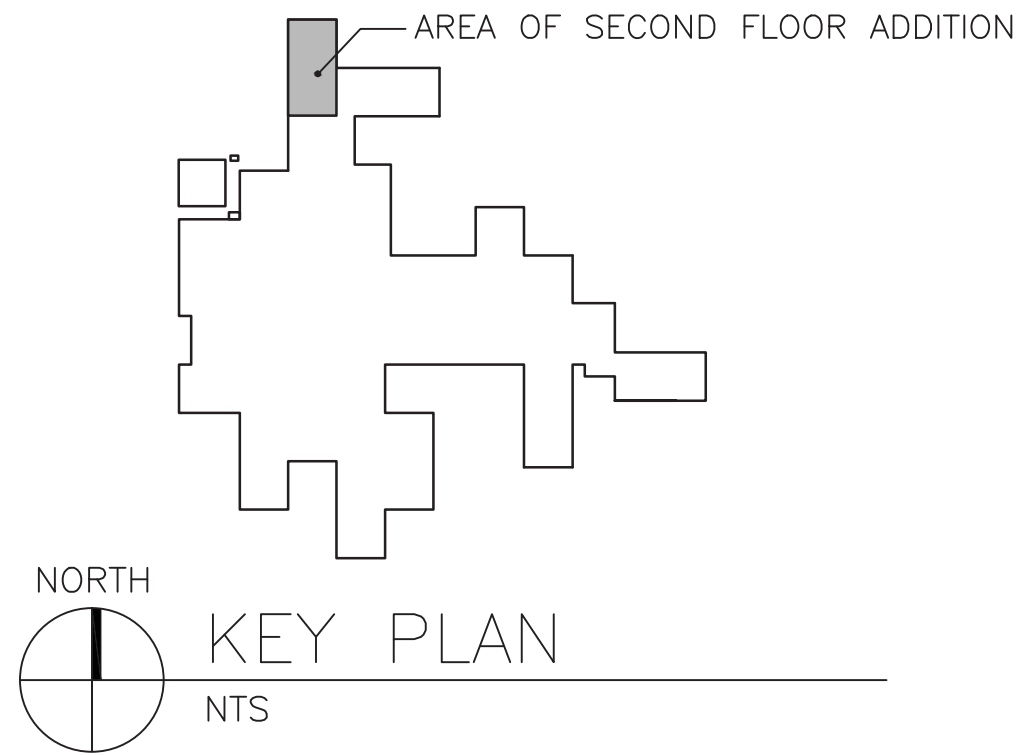
FULLY SPRINKLERED

<div>Revisions</div> <div>Date</div>		<div>CONSULTANT ENGINEER:</div> <div><div>90</div><div>CELEBRATING 90 YEARS</div><div>CLARK • NEXSEN</div><div>Architecture & Engineering</div></div> <div>1111 E MAIN STREET, SUITE 1905 RICHMOND, VA 23219 PHONE: 804.644.4690</div>	<div>COMMONWEALTH OF VIRGINIA</div> <div><div>Harold L. Belyeu, Jr.</div><div>Lic. No. 49637</div><div>8/24/12</div><div>PROFESSIONAL ENGINEER</div></div>	<div>ARCHITECT:</div> <div><div><div>A</div><div>Avetech</div><div>design group, plc</div></div><div>131 HANBURY ROAD, SUITE C CHESAPEAKE, VA 23322 PHONE: 757.389.5518</div></div>	<div>Drawing Title</div> <div>ELECTRICAL SCHEDULES AND SITE PLAN</div> <div>Approved Project Director</div>	<div>Project Title</div> <div>Mental Health Recovery Enhancement Center HH McGuire VA Medical Center</div> <div>Location</div> <div>Richmond, VA</div> <div>Date</div> <div>08/24/12 FOR CONSTRUCTION</div> <div>Checked</div> <div>-</div> <div>Drawn</div> <div>-</div>	<div>Project Number</div> <div>310</div> <div>Building Number</div> <div>500</div> <div>Drawing Number</div> <div>ES002</div>	<div>Office of Construction and Facilities Management</div> <div><div>VA</div><div>Department of Veterans Affairs</div></div>
--------------------------------------	--	--	--	---	---	---	---	---



FIRST FLOOR LIGHTING DEMOLITION PLAN
1/8"=1'-0"

- NOTES**
1. HATCHED FIXTURE INDICATES FIXTURE AND ASSOCIATED CIRCUITING TO BE DEMOLISHED. RECONFIGURE ORIGINAL BRANCH CIRCUITING TO ACCOMMODATE LIGHTING LAYOUT AND SWITCHING SCHEME AS INDICATED ON LIGHTING PLANS.
 2. FIXTURE IS EXISTING TO REMAIN, TYPICAL.
 3. RELOCATE EXISTING SWITCH, SEE ES111.

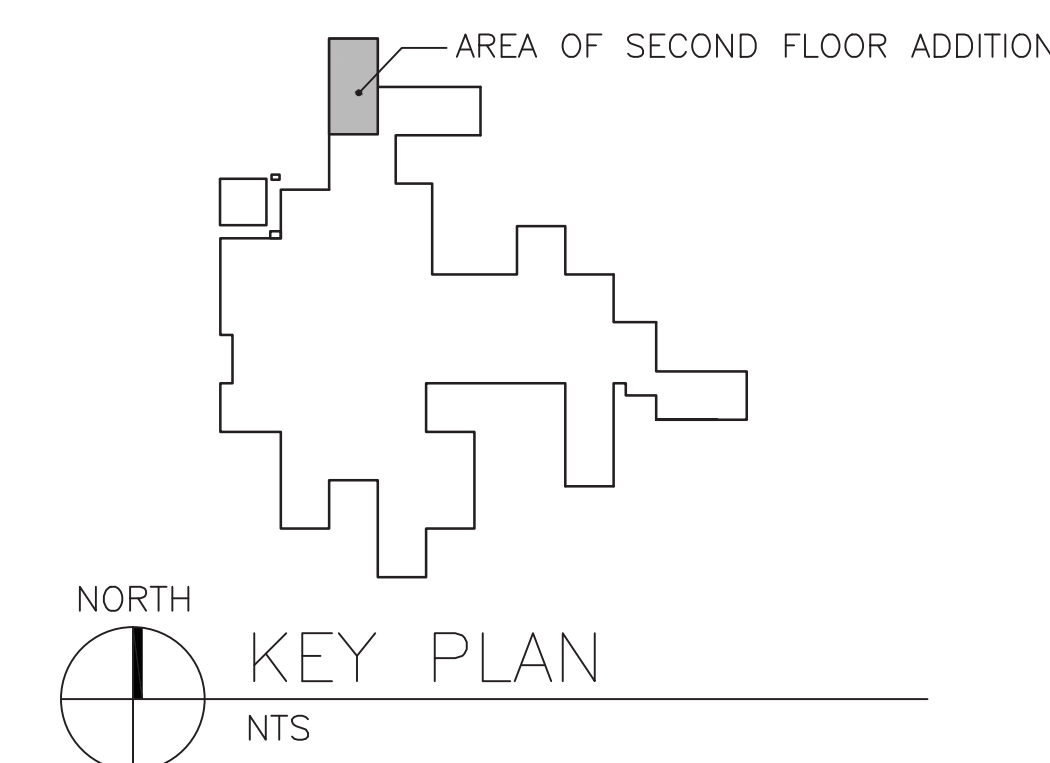


<div>Revisions</div> <div>Date</div>	<div>CONSULTANT ENGINEER:</div> <div><div><div>90</div><div>CELEBRATING 90 YEARS</div><div>CLARK • NEXSEN</div><div>Architecture & Engineering</div></div><div>1111 E MAIN STREET, SUITE 1905 RICHMOND, VA 23219 PHONE: 804.644.4690</div></div>	<div>COMMONWEALTH OF VIRGINIA</div> <div><div>HAROLD L. BELYEU, JR.</div><div>Lic. No. 49637</div><div>8/24/12</div><div>PROFESSIONAL ENGINEER</div></div>	<div>ARCHITECT:</div> <div><div><div>A</div><div>Avetech</div><div>design group, plc</div></div><div>131 HANBURY ROAD, SUITE C CHESAPEAKE, VA 23322 PHONE: 757.389.5518</div></div>	<div>Drawing Title</div> <div>FIRST FLOOR LIGHTING DEMOLITION PLAN</div> <div>Approved Project Director</div>	<div>Project Title</div> <div>Mental Health Recovery Enhancement Center HH McGuire VA Medical Center</div> <div>Location</div> <div>Richmond, VA</div> <div>Date</div> <div>08/24/12 FOR CONSTRUCTION</div> <div>Checked</div> <div>-</div> <div>Drawn</div> <div>-</div>	<div>Project Number</div> <div>310</div> <div>Building Number</div> <div>500</div> <div>Drawing Number</div> <div>ED111</div>	<div>Office of Construction and Facilities Management</div> <div><div>VA</div><div>Department of Veterans Affairs</div></div>
--------------------------------------	--	--	---	---	---	---	---



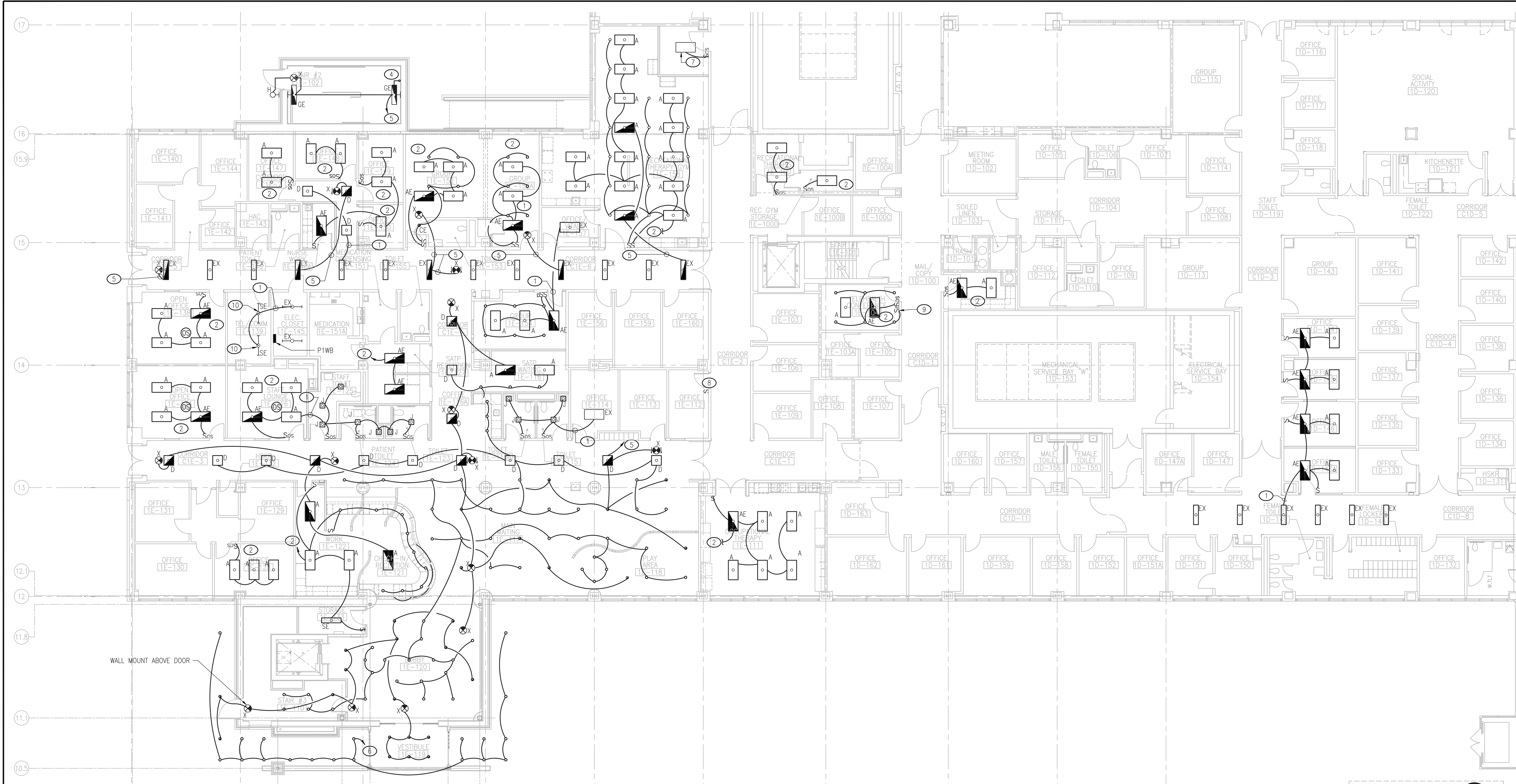
FIRST FLOOR POWER AND SYSTEMS DEMOLITION PLAN
1/8"=1'-0"

- | X | NOTES |
|----|--|
| 1. | HATCHED DEVICE INDICATES DEVICE AND ASSOCIATED CIRCUITING TO BE DEMOLISHED. RECONFIGURE ORIGINAL BRANCH CIRCUITING TO ACCOMMODATE NEW DEVICE LAYOUT. |
| 2. | EXHAUST FAN TO BE DEMOLISHED, SEE M-401. |



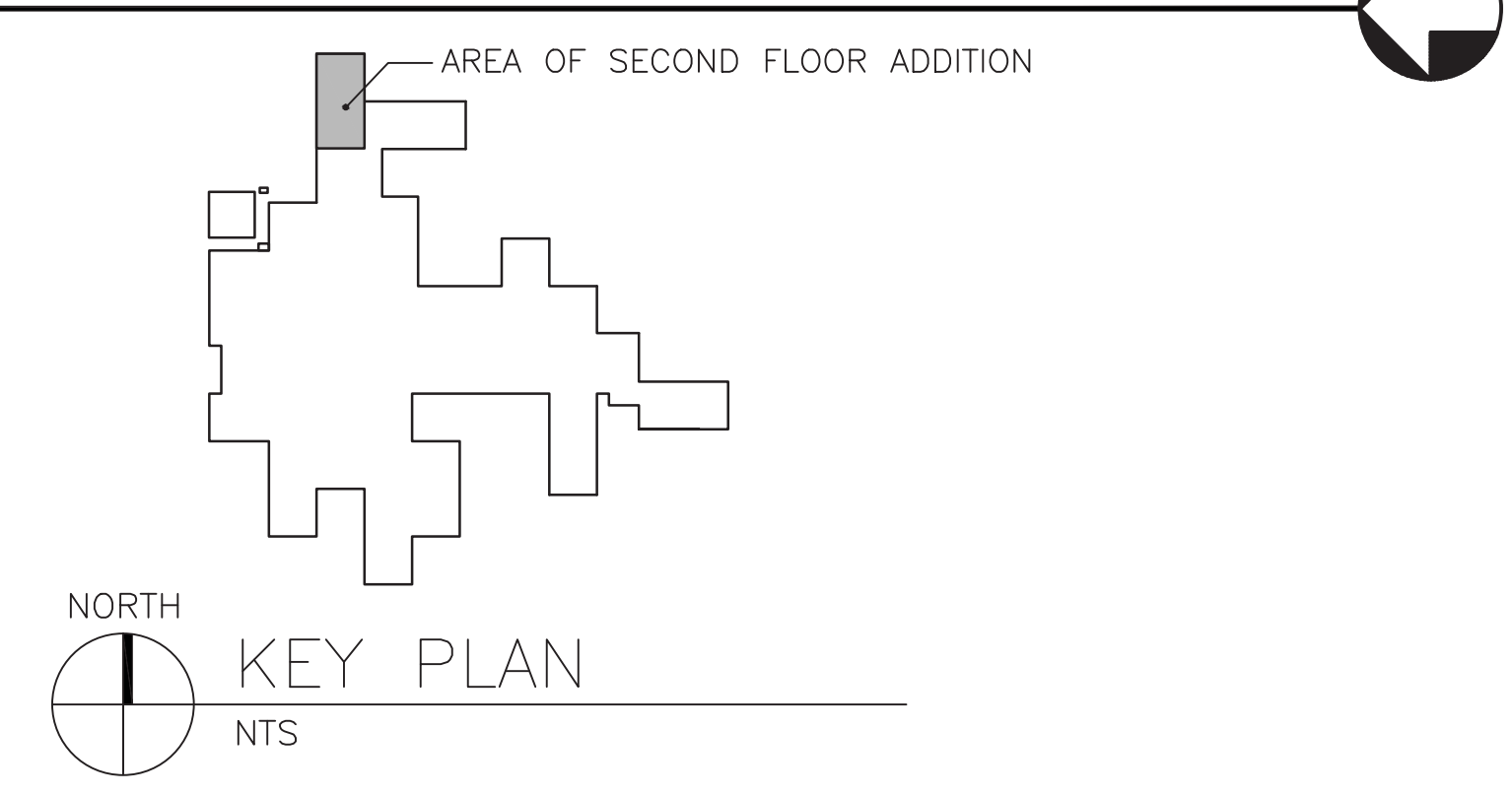
		CONSULTANT ENGINEER:				ARCHITECT:		Drawing Title FIRST FLOOR POWER AND SYSTEMS DEMOLITION PLAN		Project Title Mental Health Recovery Enhancement Center HH McGuire VA Medical Center		Project Number 310		Office of Construction and Facilities Management	
				1111 E MAIN STREET, SUITE 1905 RICHMOND, VA 23219 PHONE: 804.644.4690				131 HANBURY ROAD, SUITE C CHESAPEAKE, VA 23322 PHONE: 757.389.5518		Location Richmond, VA		Building Number 500			
										Checked - FOR CONSTRUCTION		Drawn -		Drawing Number ED211	
Revisions:		Date												 Department of Veterans Affairs	

one eighth inch = one foot
one quarter inch = one foot
three eighths inch = one foot
one half inch = one foot
three quarters inch = one foot
one inch = one foot
one and one half inches = one foot
two inches = one foot
three inches = one foot
four inches = one foot
five inches = one foot
six inches = one foot
seven inches = one foot
eight inches = one foot
nine inches = one foot
ten inches = one foot
eleven inches = one foot
twelve inches = one foot
thirteen inches = one foot
fourteen inches = one foot
fifteen inches = one foot
sixteen inches = one foot
seventeen inches = one foot
eighteen inches = one foot
nineteen inches = one foot
twenty inches = one foot
twenty one inches = one foot
twenty two inches = one foot
twenty three inches = one foot
twenty four inches = one foot
twenty five inches = one foot
twenty six inches = one foot
twenty seven inches = one foot
twenty eight inches = one foot
twenty nine inches = one foot
thirty inches = one foot
thirty one inches = one foot
thirty two inches = one foot
thirty three inches = one foot
thirty four inches = one foot
thirty five inches = one foot
thirty six inches = one foot
thirty seven inches = one foot
thirty eight inches = one foot
thirty nine inches = one foot
forty inches = one foot
forty one inches = one foot
forty two inches = one foot
forty three inches = one foot
forty four inches = one foot
forty five inches = one foot
forty six inches = one foot
forty seven inches = one foot
forty eight inches = one foot
forty nine inches = one foot
fifty inches = one foot
fifty one inches = one foot
fifty two inches = one foot
fifty three inches = one foot
fifty four inches = one foot
fifty five inches = one foot
fifty six inches = one foot
fifty seven inches = one foot
fifty eight inches = one foot
fifty nine inches = one foot
sixty inches = one foot
sixty one inches = one foot
sixty two inches = one foot
sixty three inches = one foot
sixty four inches = one foot
sixty five inches = one foot
sixty six inches = one foot
sixty seven inches = one foot
sixty eight inches = one foot
sixty nine inches = one foot
seventy inches = one foot
seventy one inches = one foot
seventy two inches = one foot
seventy three inches = one foot
seventy four inches = one foot
seventy five inches = one foot
seventy six inches = one foot
seventy seven inches = one foot
seventy eight inches = one foot
seventy nine inches = one foot
eighty inches = one foot
eighty one inches = one foot
eighty two inches = one foot
eighty three inches = one foot
eighty four inches = one foot
eighty five inches = one foot
eighty six inches = one foot
eighty seven inches = one foot
eighty eight inches = one foot
eighty nine inches = one foot
ninety inches = one foot
ninety one inches = one foot
ninety two inches = one foot
ninety three inches = one foot
ninety four inches = one foot
ninety five inches = one foot
ninety six inches = one foot
ninety seven inches = one foot
ninety eight inches = one foot
ninety nine inches = one foot
one hundred inches = one foot



FIRST FLOOR PLAN
1/8"=1'-0"

GENERAL NOTES	NOTES
1. DOWNLIGHT FIXTURES ARE TYPE "C" UON.	1. PROVIDE 277V, 20A BRANCH CIRCUIT CONNECTION FROM BRANCH CIRCUIT SERVING CORRIDOR LIGHTING.
	2. PROVIDE NEW LIGHTING IN SPACE WITH SWITCHING SCHEME AS INDICATED. PROVIDE 277V, 20A BRANCH CIRCUIT CONNECTION TO ORIGINAL BRANCH CIRCUIT SERVING EXISTING SPACE.
	3. LIGHTING AND LIGHTING CONTROL IN SPACE IS EXISTING TO REMAIN. PRESERVE ORIGINAL CONNECTION TO ORIGINAL LIGHTING BRANCH CIRCUITING.
	4. UP TO SECOND FLOOR LIGHTING.
	5. PROVIDE LIFE SAFETY BRANCH 277V, 20A/1P BRANCH CIRCUIT CONNECTION FROM EXISTING EMERGENCY EGRESS LIGHTING BRANCH CIRCUIT SERVING "E" WING EMERGENCY EGRESS LIGHTING FIXTURES.
	6. PROVIDE 277V, 20A BRANCH CIRCUIT CONNECTION TO EXISTING PANEL P1WB.
	7. RELOCATE LIGHTING FIXTURE. EXTEND AND RELOCATE ORIGINAL BRANCH CIRCUIT AS REQUIRED FOR A COMPLETE AND OPERABLE INSTALLATION.
	8. RELOCATE SWITCH AND RECONNECT EXISTING LIGHTING FOR THIS SPACE.
	9. PROVIDE LOW VOLTAGE DIGITAL DIMMER SWITCH. ENSURE COMPATIBILITY WITH ASSOCIATED LIGHT FIXTURES.
	10. ENSURE LIGHT FIXTURE IS NOT INSTALLED ABOVE CABLE TRAY.



CONSULTANT ENGINEER: CELEBRATING 90 YEARS CLARK NEXSEN Architecture & Engineering 1111 E MAIN STREET, SUITE 1905 RICHMOND, VA 23219 PHONE: 804.644.4690		ARCHITECT: 131 HANBURY ROAD, SUITE C CHESAPEAKE, VA 23322 PHONE: 757.389.5518		Drawing Title FIRST FLOOR PLAN - LIGHTING Approved Project Director		Project Title Mental Health Recovery Enhancement Center HH McGuire VA Medical Center Location Richmond, VA Date 08/24/12 FOR CONSTRUCTION		Project Number 310 Building Number 500 Drawing Number ES111		Office of Construction and Facilities Management Department of Veterans Affairs	
Revisions		Date		Checked WCMJR		Drawn DAR					

three inches = one foot
one and one half inches = one foot
one inch = one foot
three quarters inch = one foot
one half inch = one foot
three eighths inch = one foot
one quarter inch = one foot
one eighth inch = one foot

- NOTES
1. ROUTE CIRCUIT VIA LIGHTING CONTROL PANEL "LCP" IN ELEC CLOSET 2M-220.

2. LOW VOLTAGE PUSHBUTTON SWITCH WITH MANUAL OVERRIDE OF DAYLIGHTING CONTROLS. SEE NOTE #3, THIS SHEET.

3. PROVIDE FULLY PROGRAMMABLE DUAL-ZONE DAYLIGHT HARVESTING SENSOR SYSTEM FOR THIS ROOM/SPACE PER THE FOLLOWING:

3.1. SENSOR W/ DIGITAL SET-POINT CONTROL FOR DAYLIGHT HARVESTING

3.2. POWER PACK MOUNTED ABOVE CEILING FOR EACH SENSOR AS INDICATED ON PLANS. PERIMETER SPACE LIGHTING NEAR WINDOWS TO BE CONTROLLED BY DAYLIGHT HARVESTING ZONE "Z1". INTERIOR SPACE LIGHTING TO BE CONTROLLED BY DAYLIGHT HARVESTING ZONE "Z2".

3.4. PROVIDE SPACE DAYLIGHT HARVESTING LIGHTING CONTROL SYSTEM PER MANUFACTURER'S RECOMMENDATIONS INCLUDING ALL ASSOCIATED SYSTEM COMPONENTS FOR A COMPLETE AND OPERABLE SYSTEM.

3.5. INTERFACE MULTIPLE DAYLIGHTING SENSOR DEVICES SERVING THE SPACE PER MANUFACTURER'S RECOMMENDATIONS. BASIS-OF-DESIGN: DAYLIGHTING SENSOR = SENSORSWITCH CM-PC-DZ, LOW VOLTAGE PUSHBUTTON SWITCH = SENSORSWITCH sPDM SERIES W/ 2P OPTION, POWER PACK = SENSORSWITCH PP20.

4. DOWN TO FIRST FLOOR LIGHTING.

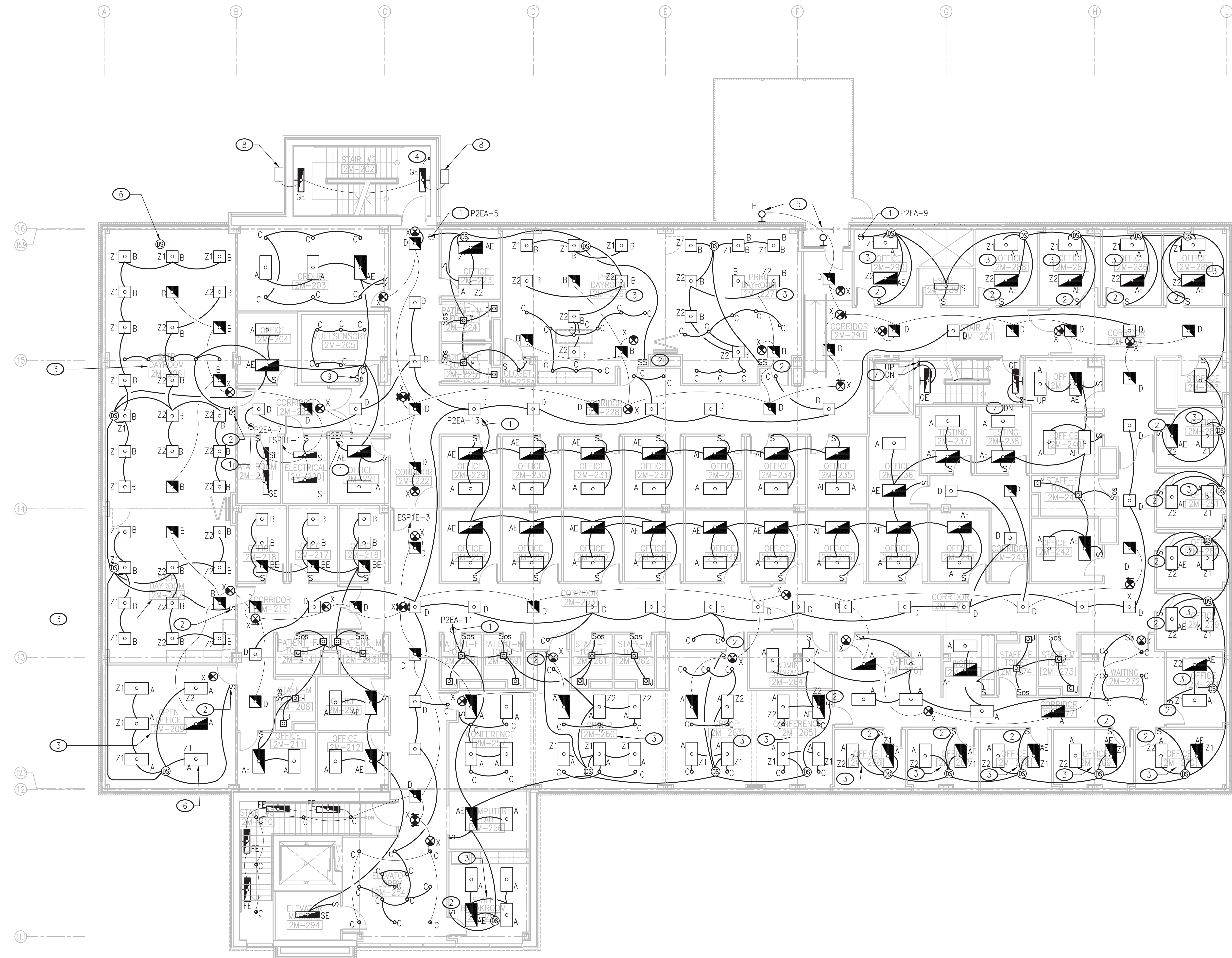
5. PROVIDE WITH PHOTOCELL CONTROL.

6. INTERFACE DAYLIGHTING SENSOR WITH OTHER DAYLIGHTING SENSOR SERVING SPACE PER MANUFACTURER'S RECOMMENDATIONS.

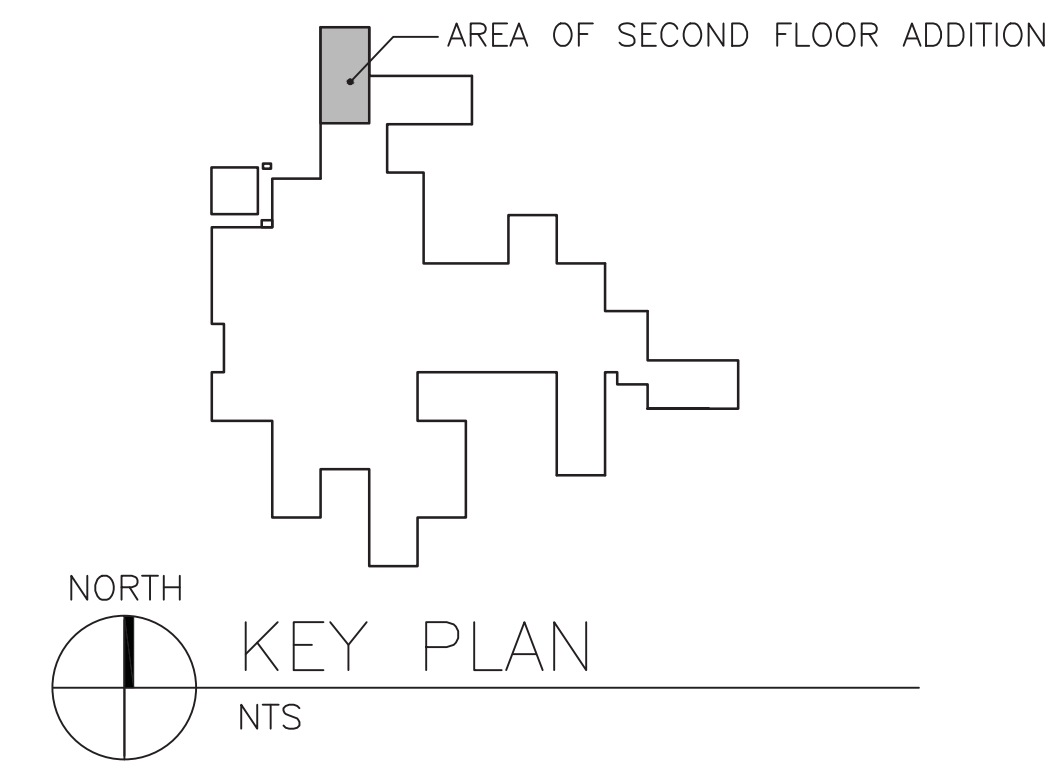
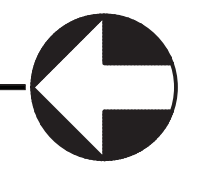
7. PROVIDE CONNECTION TO 277V, 20A/1P BRANCH CIRCUIT SERVING EXISTING STAIRWELL.

8. SECURITY FLOOD LIGHT TO MATCHING EXISTING FACILITY EXTERIOR SECURITY FLOOD LIGHTS. PROVIDE PHOTOCELL CONTROL. COORDINATE MOUNTING HEIGHT WITH VAMC PERSONNEL AND ARCHITECT PRIOR TO INSTALLATION.

9. PROVIDE LOW VOLTAGE DIGITAL DIMMER SWITCH. ENSURE COMPATIBILITY WITH ASSOCIATED LIGHT FIXTURES.



SECOND FLOOR PLAN
1/8"=1'-0"



Revisions

Date

CONSULTANT ENGINEER:

CELEBRATING 90 YEARS

CLARK • NEXSEN

Architecture & Engineering

1111 E MAIN STREET, SUITE 1905
RICHMOND, VA 23219
PHONE: 804.644.4690

COMMONWEALTH OF VIRGINIA

HAROLD L. BELEY, JR.

Lic. No. 49637

8/24/12

PROFESSIONAL ENGINEER

ARCHITECT:

A

Avetech

design group, plc

131 HANBURY ROAD, SUITE C
CHESAPEAKE, VA 23322
PHONE: 757.389.5518

Drawing Title

SECOND FLOOR PLAN - LIGHTING

Approved Project Director

Project Title

Mental Health Recovery Enhancement Center
HH McGuire VA Medical Center

Location

Richmond, VA

Date

08/24/12
FOR CONSTRUCTION

Checked

WCMJR

Drawn

DAR

Project Number

310

Building Number

500

Drawing Number

ES121

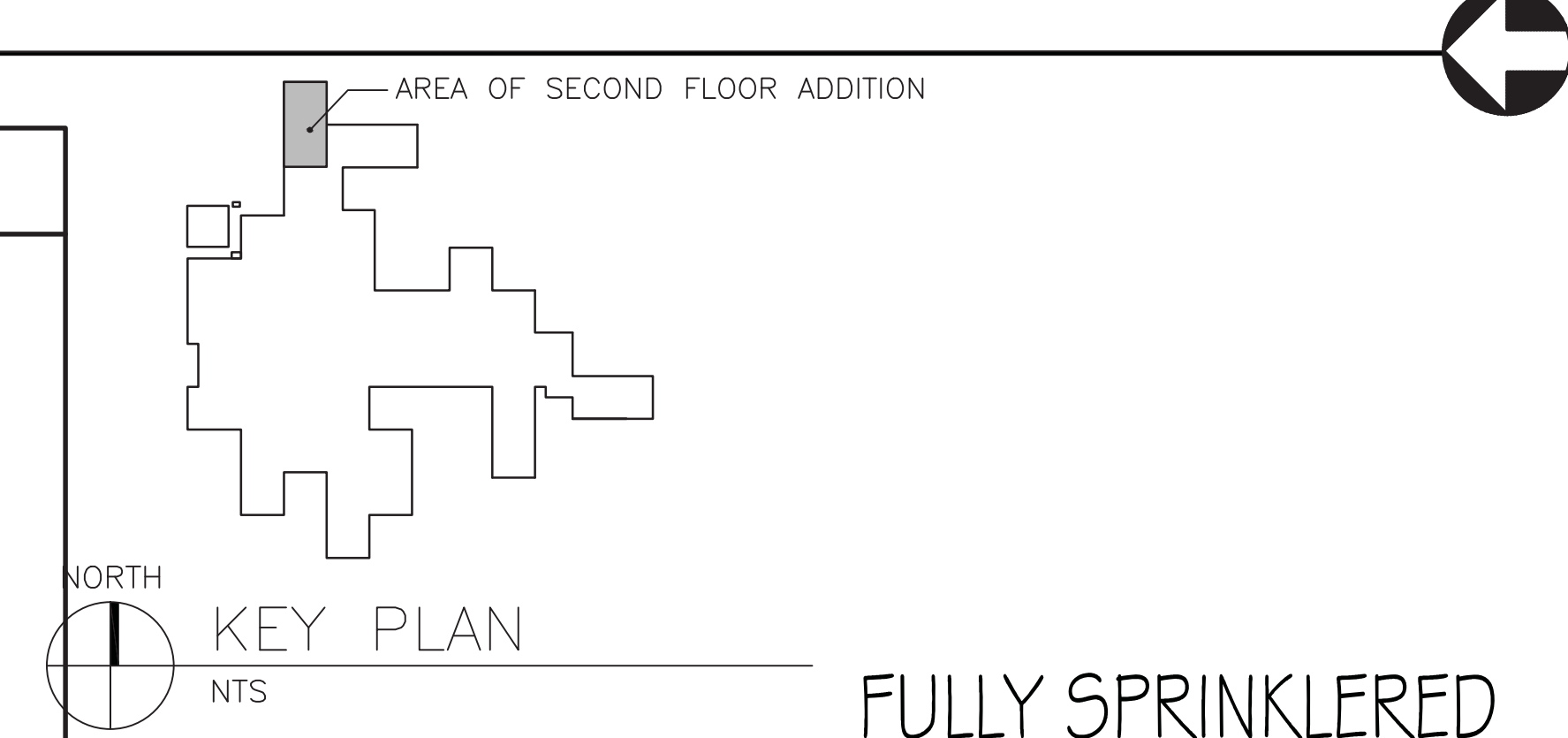
Office of Construction and Facilities Management

Department of Veterans Affairs




FIRST FLOOR PLAN - POWER (11)(12)(16)
1/8"=1'-0"

NOTES

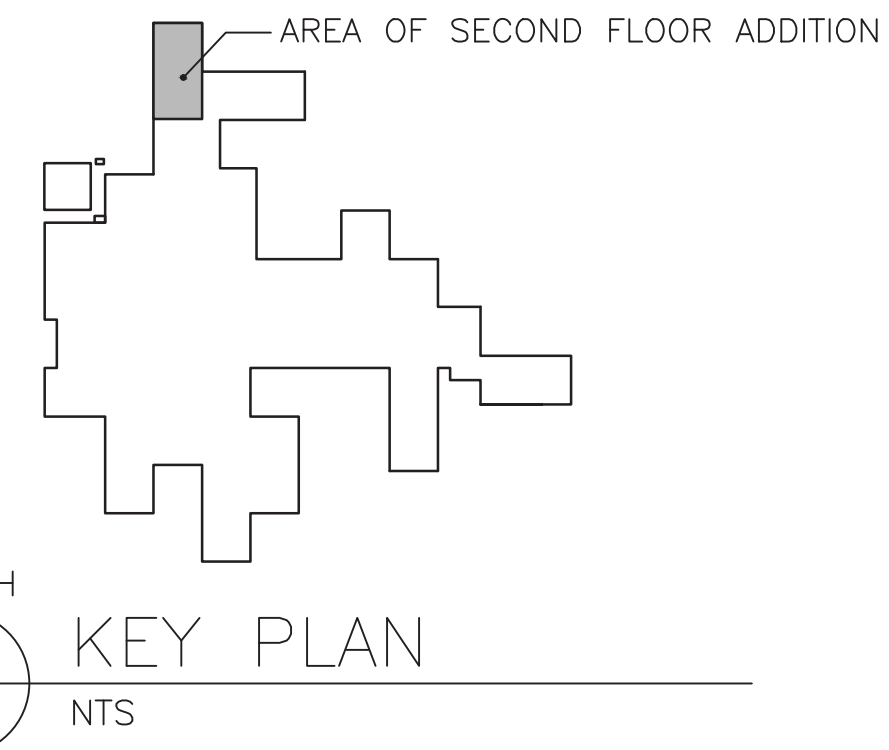
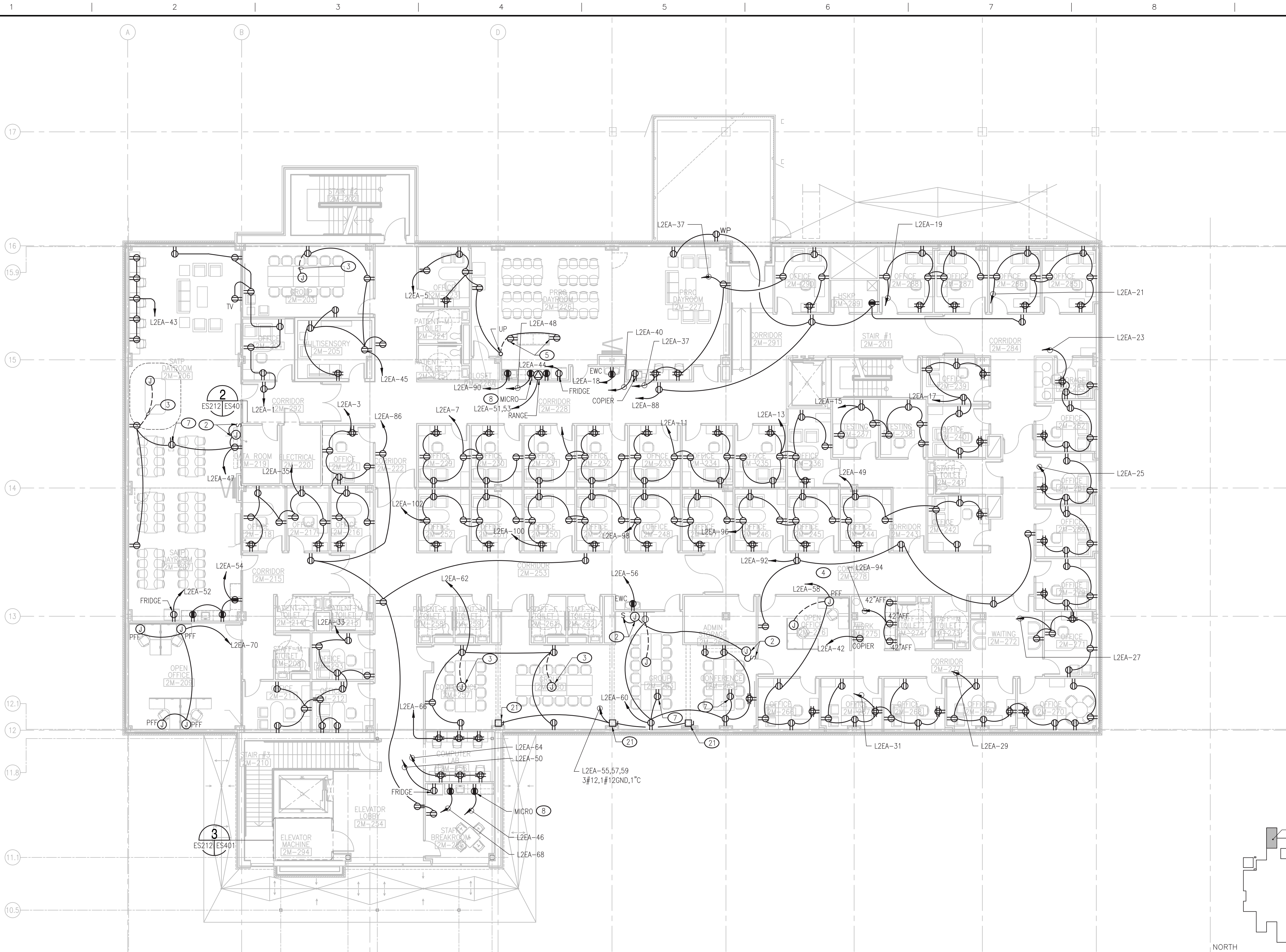
- | | | | |
|--|---|--|--|
| 1. PROVIDE 20A/1P BRANCH CIRCUIT TO EXISTING PANEL L1WA, L1WB, L1WC, OR L1WD OR NEW PANEL L1WE.
2. FOR PROJECTION SCREEN. COORDINATE FINAL POWER CONNECTION REQUIREMENTS WITH MANUFACTURER PRIOR TO INSTALLATION.
3. ROUTE CONDUIT UNDER ABOVE-SLAB.
4. NOT USED
5. DEVICE MOUNTED IN MILLWORK. COORDINATE INSTALLATION W/ MILLWORK VENDOR PRIOR TO ROUGH-IN.
6. CONNECT TO EXISTING BRANCH CIRCUIT SERVING EXISTING DEVICE.
7. FOR PROJECTOR. MOUNT RECEPTACLE FLUSH IN CEILING. COORDINATE FINAL LOCATION WITH PROJECT LOCATION PRIOR TO ROUGH-IN.
8. COORDINATE FINAL LOCATION W/ ARCHITECT PRIOR TO ROUGH-IN.
9. NOT USED. | 10. PROVIDE NEW 30A/2P BRANCH CIRCUIT TO EXISTING PANEL L1WA, L1WB, L1WD OR L1WI AVAILABLE SPACE. PROVIDE NEMA14-30R RECEPTACLE. COORDINATE FINAL CONNECTION REQUIREMENTS WITH MANUFACTURER PRIOR TO ROUGH-IN.
11. PROVIDE 120V, 20A/1P DEDICATED CIRCUIT FOR FIRE/SMOKE DAMPER (F/SD) EQUIPMENT CONNECTION IN FIRST FLOOR INTERSTITIAL SPACE. COORDINATE EXACT LOCATION.
12. PROVIDE 120V, 20A/1P CIRCUIT FOR VAV UNIT STEP DOWN TRANSFORMER CONNECTION IN FIRST FLOOR INTERSTITIAL SPACE. COORDINATE WITH PRIOR TO INSTALLATION.
13. PROVIDE NEW 30A/1P BRANCH CIRCUIT TO EXISTING PANEL L1WA, L1WB, L1WD, OR L1WI AVAILABLE SPACE FROM SP-1 CONTROL PANEL. COORDINATE LOCATION OF SP-1 CONTROL PANEL PRIOR TO INSTALLATION. | 14. FOR AUTO DOOR, PROVIDE 120V, 20A/1P DEDICATED BRANCH CIRCUIT TO EXISTING 208V/120V LIFE SAFETY BRANCH PANEL SERVING WING "E"
15. PROVIDE 20A/1P BRANCH CIRCUIT TO EXISTING PANEL L1WA OR L1WB.
16. PROVIDE 120V, 20A/1P BRANCH CIRCUIT FOR DDC CONTROLS IN INTERSTITIAL SPACE. COORDINATE LOCATION PRIOR TO INSTALLATION.
17. PROVIDE 480V, 20A/3P BRANCH CIRCUIT TO AVAILABLE SPACE IN EXISTING PANEL L1WA OR PD1W.
18. SPLIT SYSTEM LOCATED IN BASEMENT. COORDINATE EXACT LOCATION PRIOR TO INSTALLATION. CONNECT TO RESPECTIVE OUTDOOR CONDENSING UNIT PER MANUFACTURERS RECOMMENDATIONS, SEE ES213.
19. PROVIDE 50A/2P BRANCH CIRCUIT TO L1WA, L1WB, L1WD, OR L1WI AVAILABLE SPACE. | 20. FOR SKY FACTORY DISPLAY IN CEILING. PROVIDE 2#12, 1#12 GND, IN 1-1/2", 20A/1P DEDICATED BRANCH CIRCUIT TO EXISTING PANELS L1WA, L1WB, L1WC, L1WD OR PANEL L1WE. COORDINATE FINAL CONNECTION REQUIREMENTS WITH MANUFACTURER PRIOR TO INSTALLATION.
21. FOR 208V, 3-PHASE .5HP MOTORIZED OPERABLE PARTITION.
22. DEDICATED GFI RECEPTACLES FOR COFFEE MACHINE MOUNTED ABOVE COUNTER. |
|--|---|--|--|



FULLY SPRINKLERED

		CONSULTANT ENGINEER:		ARCHITECT:		Drawing Title FIRST FLOOR PLAN - POWER		Project Title Mental Health Recovery Enhancement Center HH McGuire VA Medical Center		Project Number 310		Office of Construction and Facilities Management	
								Building Number 500		Drawing Number ES211		 Department of Veterans Affairs	
		1111 E MAIN STREET, SUITE 1905 RICHMOND, VA 23219 PHONE: 804.644.4690		131 HANBURY ROAD, SUITE C CHESAPEAKE, VA 23322 PHONE: 757.389.5518				Location Richmond, VA					
						Approved: Project Director		Date 08/24/12 FOR CONSTRUCTION		Checked WCMJ/R		Drawn DAR	
Revisions:		Date											

three inches = one foot
one and one half inches = one foot
one inch = one foot
three quarters inch = one foot
one half inch = one foot
three eighths inch = one foot
one quarter inch = one foot
one eighth inch = one foot



SECOND FLOOR PLAN – POWER (SEE ES211 FOR PLAN NOTES)
1/8"=1'-0"

<div>Revisions</div> <div>Date</div>	<div>CONSULTANT ENGINEER:</div> <div><div>90</div><div>CELEBRATING 90 YEARS</div><div>CLARK • NEXSEN</div><div>Architecture & Engineering</div></div> <div>1111 E MAIN STREET, SUITE 1905 RICHMOND, VA 23219 PHONE: 804.644.4690</div>	<div>ARCHITECT:</div> <div><div><div></div><div>Avetech</div><div>design group, plc</div></div><div>131 HANBURY ROAD, SUITE C CHESAPEAKE, VA 23322 PHONE: 757.389.5518</div></div>	<div>Drawing Title</div> <div>SECOND FLOOR PLAN – POWER</div> <div>Approved Project Director</div>	<div>Project Title</div> <div>Mental Health Recovery Enhancement Center HH McGuire VA Medical Center</div> <div>Location</div> <div>Richmond, VA</div> <div>Date</div> <div>08/24/12 FOR CONSTRUCTION</div> <div>Checked</div> <div>WCM/JR</div> <div>Drawn</div> <div>DAR</div>	<div>Project Number</div> <div>310</div> <div>Building Number</div> <div>500</div> <div>Drawing Number</div> <div>ES212</div>	<div>Office of Construction and Facilities Management</div> <div>Department of Veterans Affairs</div>
--------------------------------------	--	--	--	--	---	---