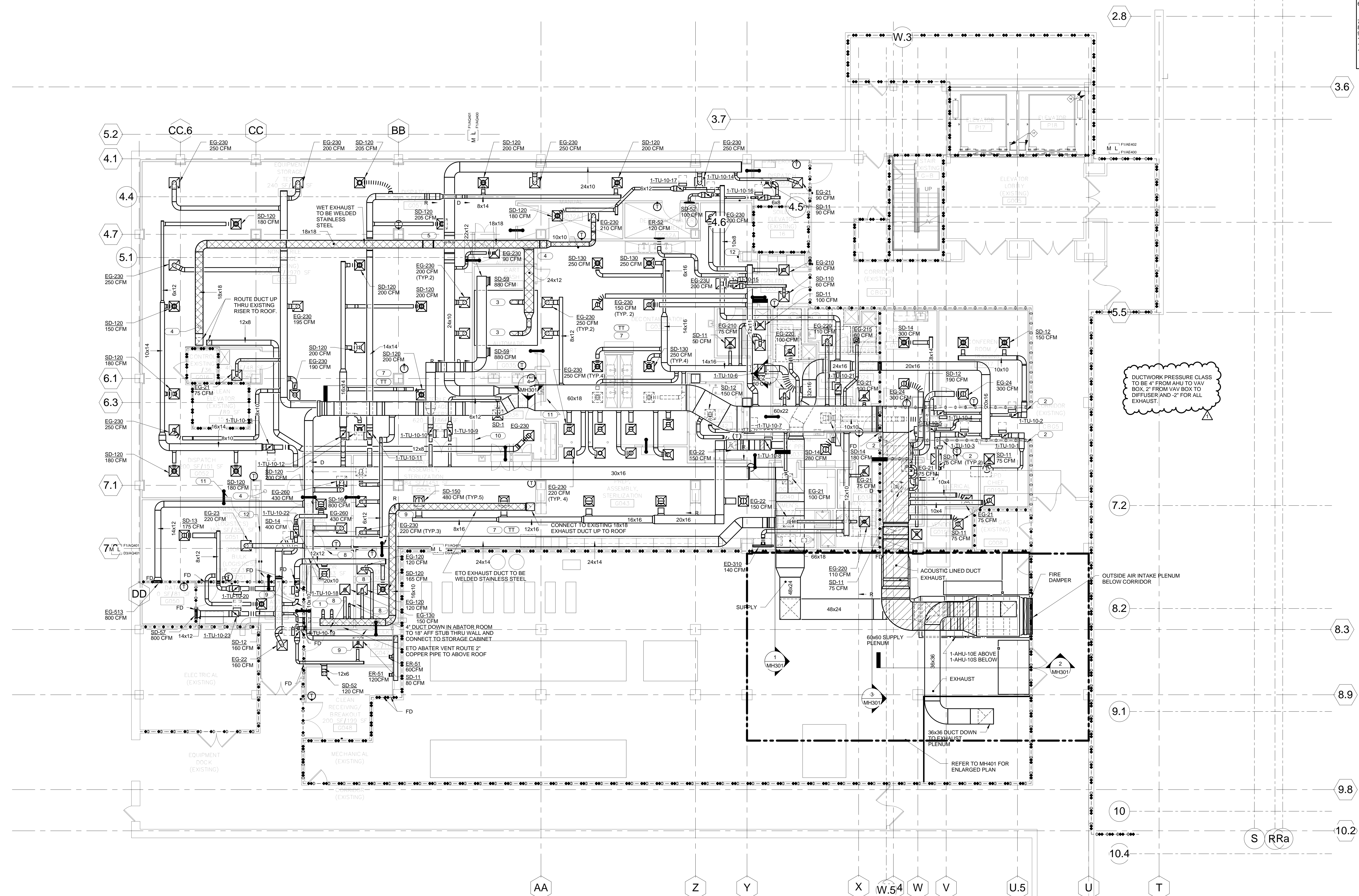


Three inches = one foot
One and one half inches = one foot
One inch = one foot
Three quarters inch = one foot
One half inch = one foot
Three eighths inch = one foot
One quarter inch = one foot
One eighth inch = one foot

- KEY NOTES**
- 6" DIAMETER DUCT DOWN TO INDIRECT CONNECTION ON VENT FROM ABATOR.
 - DUCT SILENCER
 - 10" EXH DUCT CONNECTED TO CART WASH. COORDINATE WITH EQUIPMENT MANUFACTURER. BALANCE TO 380 CFM EACH.
 - LOW POINT IN DUCT DRAIN. REFER TO DETAIL 2/MH502.
 - HIGH POINT IN DUCT.
 - VERIFY EXHAUST REQUIREMENT OF DRYERS. PROVIDE EXHAUST CONNECTION AS REQUIRED. COORDINATE WITH REFRIGERATION TRUCKER BY OWNER.
 - PROVIDE 2 ETO REMOTE DISPLAYS.
 - PROVIDE PAA SENSOR.
 - PROVIDE PAA REMOTE DISPLAY.
 - PROVIDE PAA DISPLAY WITH REMOTE SENSOR IN ACID CABINET.



1 BASEMENT LEVEL - MECHANICAL - HVAC
1/8" = 1'-0"

FULLY SPRINKLERED
CONSTRUCTION DOCUMENTS

No.	Date	Revisions
1	06/26/2013	Amendment #2

CONSULTANTS:	
STRUCTURAL ENGINEER (SPD): GREGORY P. LUTH & ASSOCIATES, INC. 3350 SCOTT BOULEVARD, BUILDING 48 SANTA CLARA, CA 95054 COA#: 2006015199	MECHANICAL/ELECTRICAL: KJWW ENGINEERING CONSULTANTS - ST. LOUIS #14 SUNNEN DRIVE ST. LOUIS, MO 63141 COA#: W00470734
STRUCTURAL ENGINEER (ELEVATORS): KPFF CONSULTING ENGINEERS - ST. LOUIS 1630 DES PERES RD # 100 ST. LOUIS, MO 63131 COA#:	PLUMBING/FIRE PROTECTION: KJWW ENGINEERING GROUP, LLC 1935 ARKANSAS STREET ST. LOUIS, MO 63118 COA#:
ACOUSTICAL ENGINEER: ACOUSTICCONTROL 1709 WASHINGTON AVE, LOFT 300 ST. LOUIS, MO 63103	ESTIMATING: KWAME BUILDING GROUP 1204 WASHINGTON AVE, SUITE 200 ST. LOUIS, MO 63103
FIRE SPRINKLER: CODE CONSULTANTS INCORPORATED 2043 WOODLAND PARKWAY, SUITE 300 ST. LOUIS, MISSOURI 63146 COA#: 000419	

ARCHITECT/ENGINEERS:	
CHRISTNER	
ARCHITECTS DESIGNERS PLANNERS LANDSCAPE ARCHITECTS 168 N. MERAMEC AVE, SUITE 400 ST. LOUIS, MISSOURI 63105 TEL 314.725.2927 FAX 314.725.2928 CHRISTNERINC.COM CORPORATE CHARTER NUMBER - 00400650	
THE SEAL (S) AND SIGNATURE(S) APPLY ONLY TO THE DOCUMENT TO WHICH THEY ARE AFFIXED, AND WE EXPRESSLY DISCLAIM ANY RESPONSIBILITY FOR ALL OTHER PLANS, SPECIFICATIONS, ESTIMATES, REPORTS, OR OTHER DOCUMENTS OR INSTRUMENTS RELATING TO OR INTENDED TO BE USED FOR ANY PART OF PARTS OF THE PROJECT. © COPYRIGHT 2012 CHRISTNER INC.	

Drawing Title	
BASEMENT LEVEL - MECHANICAL - HVAC	
Approved: Medical Center Director	Approved: Chief of O.R.
Approved: Chief of SPD	Approved: Director of Facilities Management
Approved: Infection Control Nurse Practitioner	

Project Title	
VA Truman SPD	
Location HARRY S. TRUMAN VAMC	
Date 01/13/12 *	Checked JEFBOL
Drawn MICVAN	Approved
Project Number 10.0438.00	Building Number 1
Drawing Number MH101	Dwg. 60 OF 95

Office of
Construction
and Facilities
Management

Department of
Veterans Affairs