

SECTION 1 - PIPE SUPPORT

- NOTE:
- THIS SECTION APPLIES TO PIPE SUPPORT AND PIPE GUIDE LOCATIONS. SEE 1A/S3.1 FOR PIPE SUPPORT AND 1B/S3.1 FOR PIPE GUIDE LOCATIONS.
 - PIPES SHALL BE SUPPORTED AT 12'-0" (MAX), AND AT PIPE GUIDES. SEE MECHANICAL DRAWINGS FOR DETAILS.
 - MAINTAIN MINIMUM 1'-0" FROM SUPPORT LOCATION TO JOINT BETWEEN PRECAST UNITS.
 - SEE 1A/S3.1 AND 4/S3.1 FOR ADDITIONAL INFORMATION.

SECTION 1A - PIPE SUPPORT AT ANCHOR LOCATIONS

- PIPE SUPPORT FRAMING INCLUDING ALL STEEL COMPONENTS AND FASTENERS
- PIPE SUPPORT FRAMING INCLUDING ALL STEEL COMPONENTS AND FASTENERS SHALL BE SHOWN ON S3.1.
 - CONCRETE EXPANSION ANCHORS SHALL BE HOT-DIP GALVANIZED.
 - REPAIR GALVANIZING AT FIELD WELDED AND DAMAGED AREAS USING ZINC-RICH COATING.
 - COORDINATE THE LOCATION, DIMENSIONS AND ATTACHMENTS WITH MECHANICAL DRAWINGS. DIMENSIONS, CLEARANCES AND ATTACHMENTS WITH MECHANICAL DRAWINGS OR CONFLICTS.

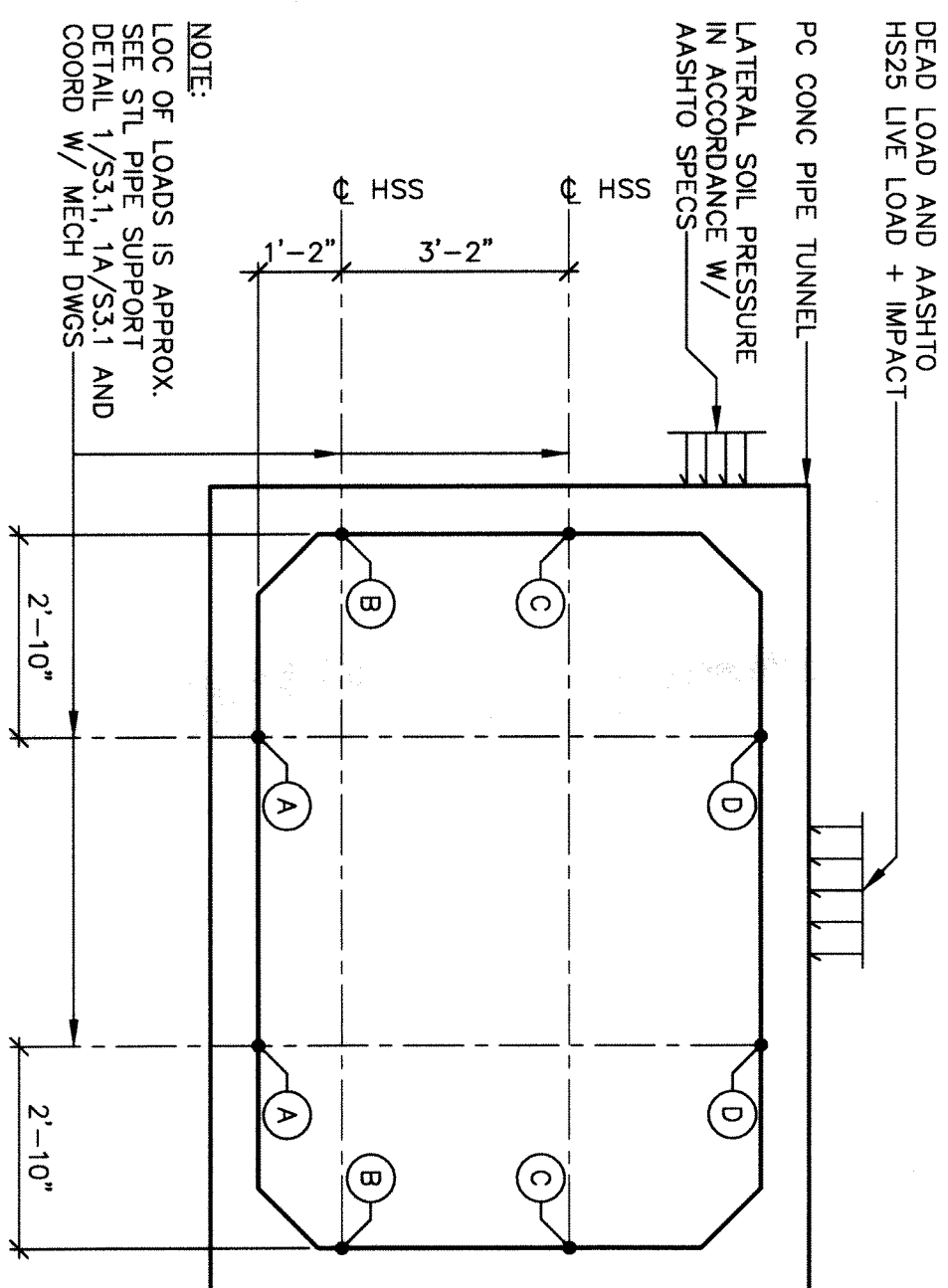
PIPE TUNNEL LOAD SCHEDULE			
LOAD DESIGNATION	PIPE SUPPORT AND GUIDE LOCATIONS		PIPE ANCHOR LOCATIONS
	VERTICAL	LONGITUDINAL	TRANSVERSE
(A)	3,000 POUNDS	500 POUNDS	400 POUNDS
(B)	1,500 POUNDS	500 POUNDS	* 800 POUNDS
(C)	1,500 POUNDS	500 POUNDS	1,500 POUNDS
(D)	-	-	22,000 POUNDS

* AT PIPE GUIDE LOCATIONS, TRANSVERSE FORCE AT B AND C EQUALS 2,000 POUNDS.

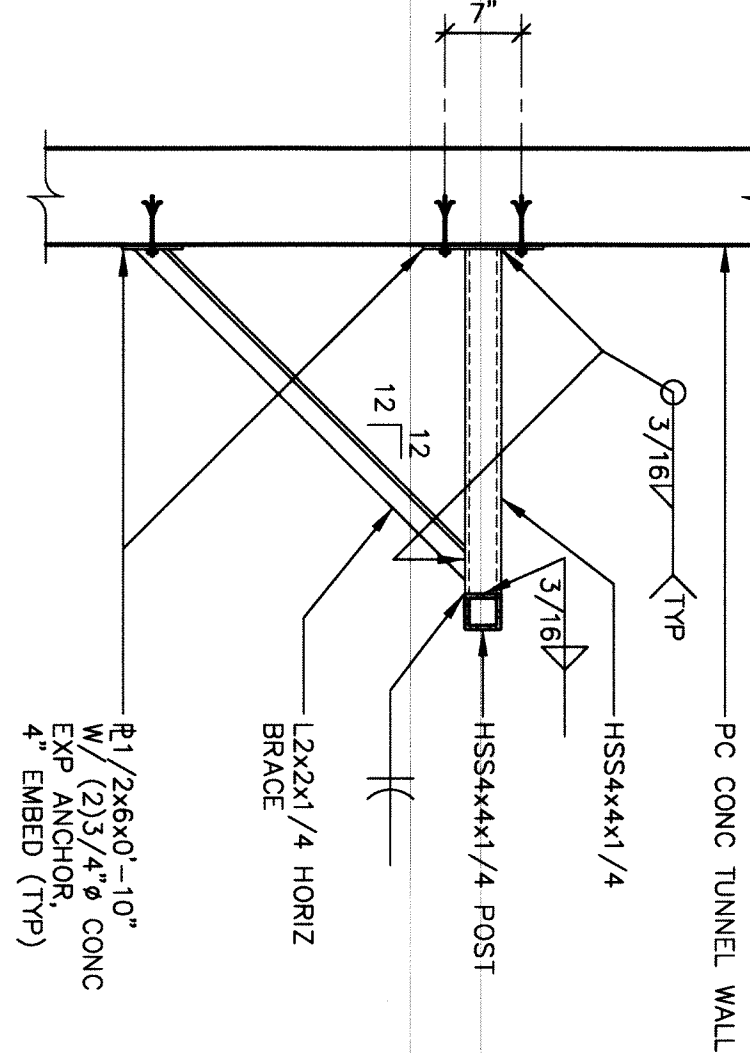
- NOTES:
- LONGITUDINAL LOAD DIRECTION IS PARALLEL TO CENTERLINE OF TUNNEL.
 - TRANSVERSE LOAD DIRECTION IS PERPENDICULAR TO CENTERLINE OF TUNNEL.
 - PIPE SUPPORT LOADS BASED ON MAXIMUM 12'-FOOT SPACING CENTER TO CENTER OF SUPPORTS.
 - APPROXIMATE PIPE ANCHOR LOCATIONS ARE SHOWN ON S3.1. COORDINATE ACTUAL SUPPORT, GUIDE AND ANCHOR LOCATIONS WITH MECHANICAL DRAWINGS.
 - PIPE ANCHOR, GUIDE AND SUPPORT LOADS BASED ON LOAD INFORMATION SHOWN ON MECHANICAL DRAWINGS. NOTIFY STRUCTURAL ENGINEER IF LOADS DIFFER FROM THAT SHOWN ON MECHANICAL DRAWINGS.

- PRECAST PIPE TUNNEL NOTES:
- SEE 4/S3.1 AND PIPE TUNNEL LOAD SCHEDULE FOR REQUIRED DESIGN LOADING.
 - COMPLY WITH ACI 318 AND MASHTO SPECS.
 - JOINTS, EACH SECTION SHALL HAVE A MALE AND FEMALE END WITH NOT LESS THAN 12" OF OVERLAP. PROVIDE REINFORCING BARS AND CONCRETE ENCASEMENT TO JOINT SURFACE. SEE 6/S3.1.
 - AT PRECAST UNITS AT PIPE ANCHOR LOCATIONS AND AT PRECAST UNITS AT EACH END OF TUNNEL, PROVIDE MINIMUM #4 AT 12" OC LONGITUDINAL BARS IN EACH WALL, FLOOR AND CEILING.
 - SUBMIT SHOP DRAWINGS SHOWING DIMENSIONS OF EACH UNIT AND REINFORCEMENT. REINFORCEMENT SHALL BE SHOWN IN EACH UNIT AND REINFORCEMENT SHALL BE SHOWN IN EACH UNIT. MATERIAL PROPERTIES, STEEL REINFORCEMENT - ASTM A615, GRADE 60. CONCRETE MINIMUM COMPRESSIVE STRENGTH - 5000 PSI AT 28 DAYS.

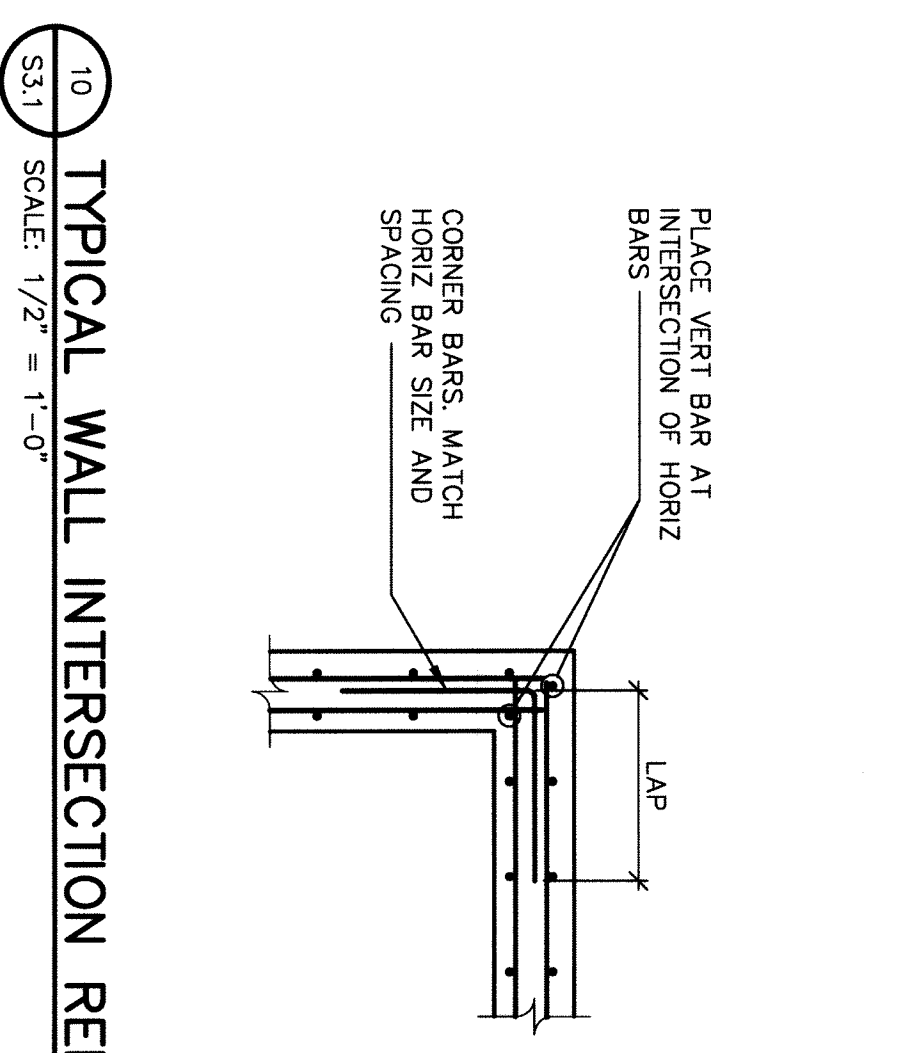
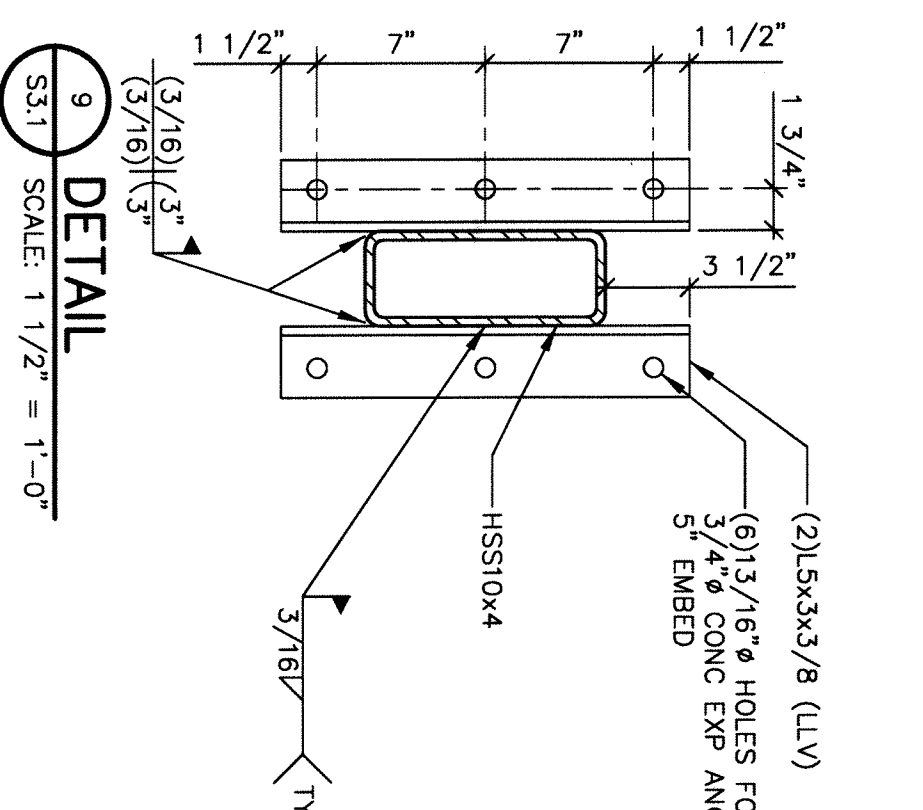
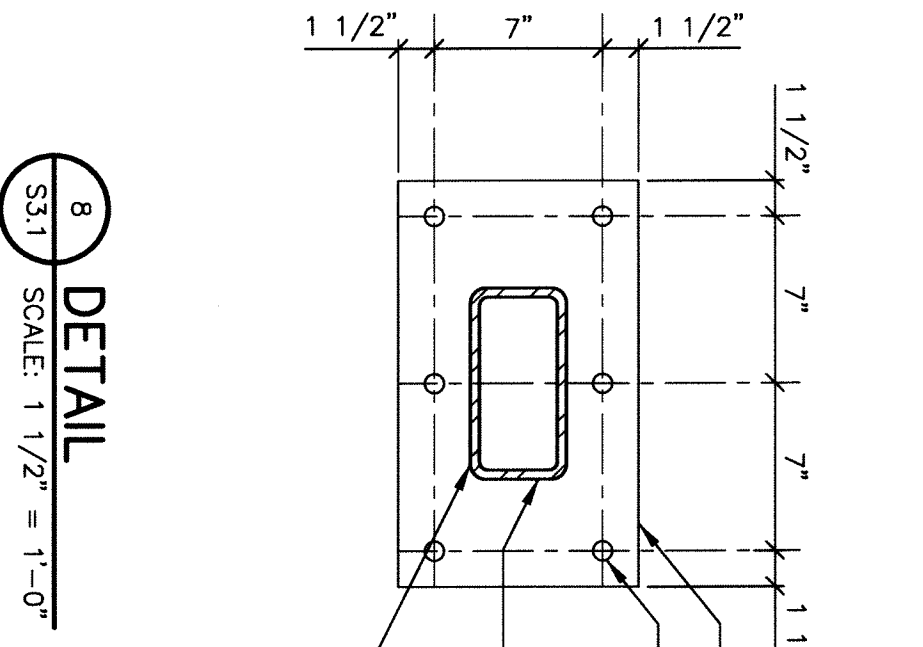
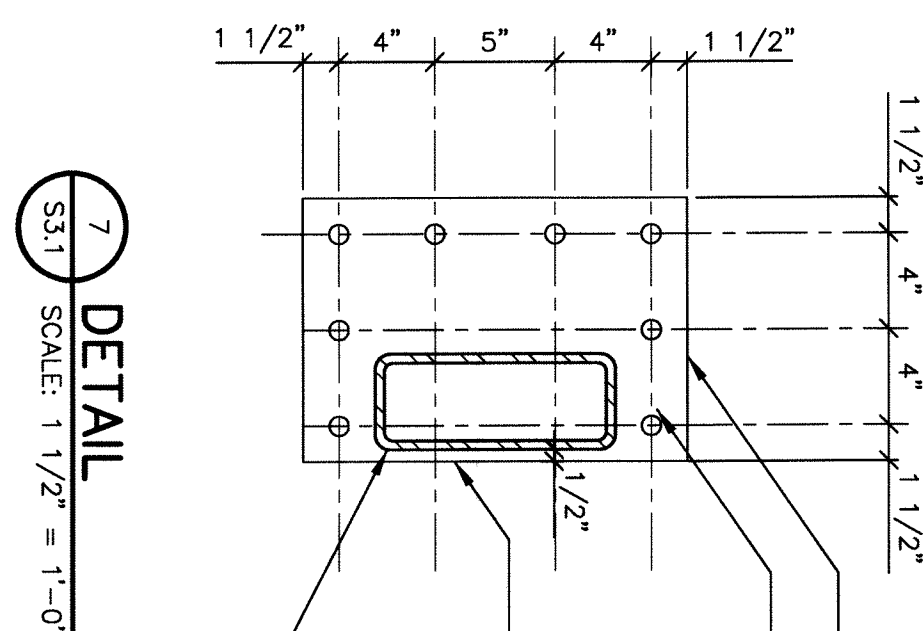
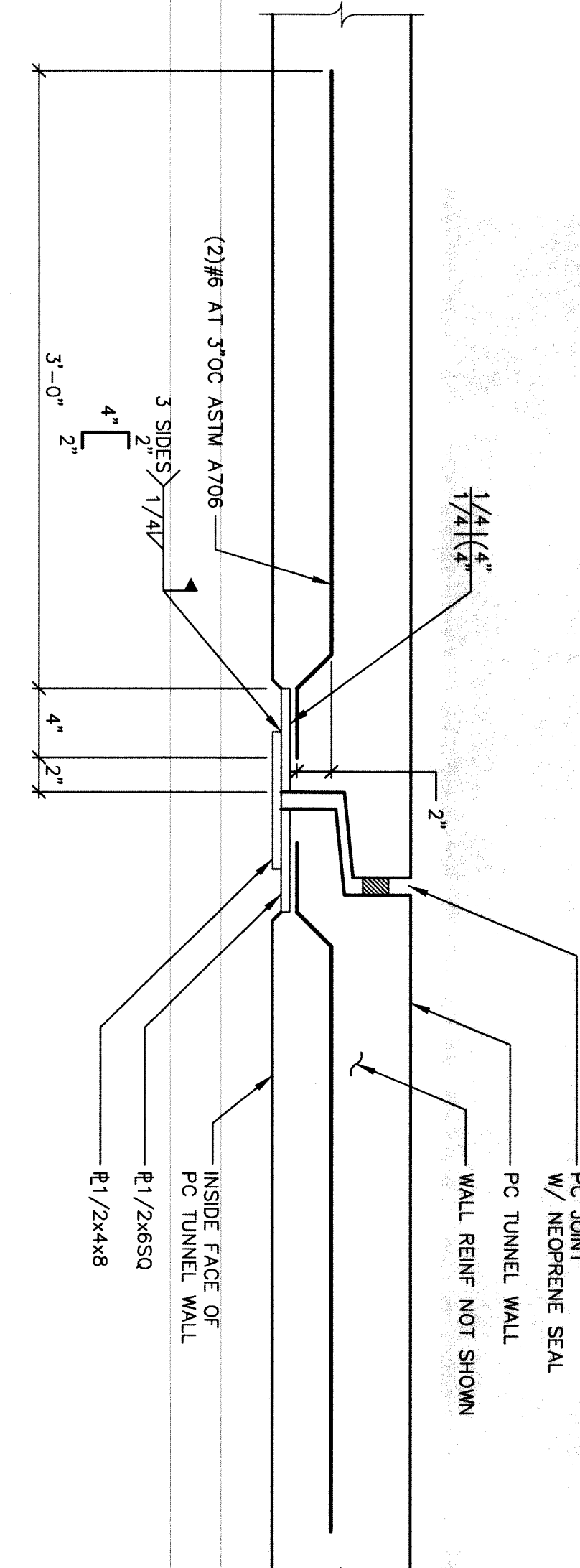
- PIPE TUNNEL LOAD SCHEDULE FOR REQUIRED DESIGN LOADING.
- SEE 4/S3.1 AND PIPE TUNNEL LOAD SCHEDULE FOR REQUIRED DESIGN LOADING.
 - COMPLY WITH ACI 318 AND MASHTO SPECS.
 - JOINTS, EACH SECTION SHALL HAVE A MALE AND FEMALE END WITH NOT LESS THAN 12" OF OVERLAP. PROVIDE REINFORCING BARS AND CONCRETE ENCASEMENT TO JOINT SURFACE. SEE 6/S3.1.
 - AT PRECAST UNITS AT PIPE ANCHOR LOCATIONS AND AT PRECAST UNITS AT EACH END OF TUNNEL, PROVIDE MINIMUM #4 AT 12" OC LONGITUDINAL BARS IN EACH WALL, FLOOR AND CEILING.
 - SUBMIT SHOP DRAWINGS SHOWING DIMENSIONS OF EACH UNIT AND REINFORCEMENT. REINFORCEMENT SHALL BE SHOWN IN EACH UNIT AND REINFORCEMENT SHALL BE SHOWN IN EACH UNIT. MATERIAL PROPERTIES, STEEL REINFORCEMENT - ASTM A615, GRADE 60. CONCRETE MINIMUM COMPRESSIVE STRENGTH - 5000 PSI AT 28 DAYS.



SECTION 5 - PLAN DETAIL



SECTION 6 - DETAIL - TIE PLATE AT PRE-CAST WALLS



SECTION 10 - TYPICAL WALL INTERSECTION REINFORCEMENT

- NOTE:
- WALLS ARE CLASS B, BUT NOT LESS THAN 2'-0".

FINAL DESIGN (100%)
FULLY SPRINKLERED

CONSULTANTS: PROFESSIONAL ASSOCIATES, P.C. 1000 10th Avenue, Suite 1000 New York, NY 10018 TEL: (212) 406-7040 FAX: (212) 406-7040 www.profa.com		ENGINEERS ASSOCIATES, P.C. 1000 10th Avenue, Suite 1000 New York, NY 10018 TEL: (212) 406-7040 FAX: (212) 406-7040 www.profa.com	
ARCHITECT/ENGINEERS: Hymon & Hayes ASSOCIATES 6 WEADLEY COURT, ALBANY, NEW YORK 12205 (518) 452-3470 (518) 452-3785 fax <i>Over 20 years of quality individual service</i>		Project Title: REPAIR HOT WATER LINES PHASE III Stratton VA Medical Center	
Project Number: VA 528A8-10-814		Location: Albany, New York	
Building Number: -		Checked: NEW	
Drawing Number: S3.1		Drawn: CDM	
Date: MAY 10, 2003		Project Title: REPAIR HOT WATER LINES PHASE III Stratton VA Medical Center	
Office of Construction and Facilities Management		Project Title: REPAIR HOT WATER LINES PHASE III Stratton VA Medical Center	