

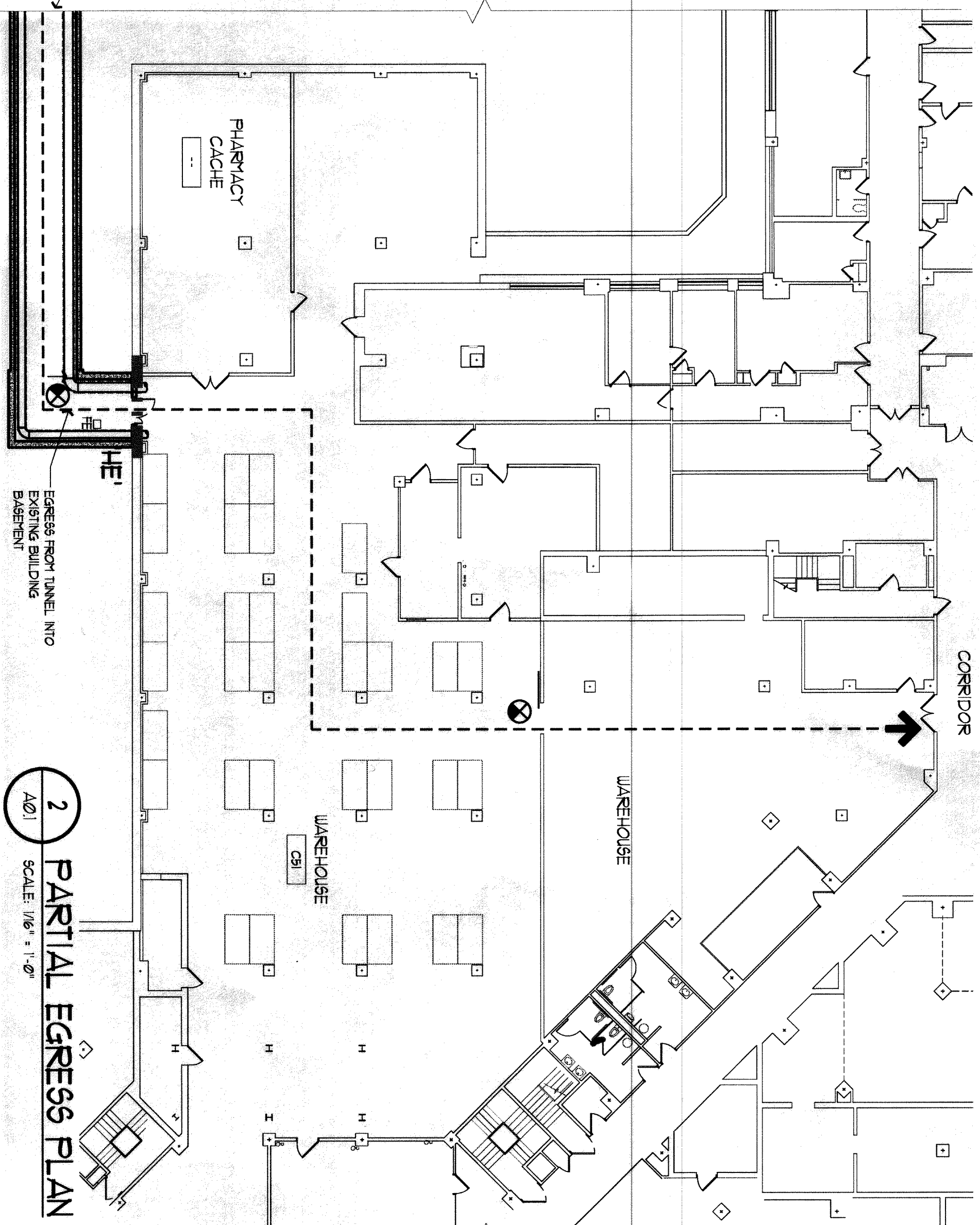
KEY PLAN
SCALE: N.T.S.
CALLED NORTH

NOTE:
THIS DRAWING IS BASED ON INFORMATION AND COORDINATION PROVIDED BY THE CLIENT AND THE CONTRACTOR. THE CONTRACTOR SHALL BE RESPONSIBLE FOR VERIFYING THE ACCURACY OF THE INFORMATION PROVIDED AND FOR OBTAINING ALL NECESSARY PERMITS AND APPROVALS. THE CONTRACTOR SHALL BE RESPONSIBLE FOR OBTAINING ALL NECESSARY PERMITS AND APPROVALS. THE CONTRACTOR SHALL BE RESPONSIBLE FOR OBTAINING ALL NECESSARY PERMITS AND APPROVALS.

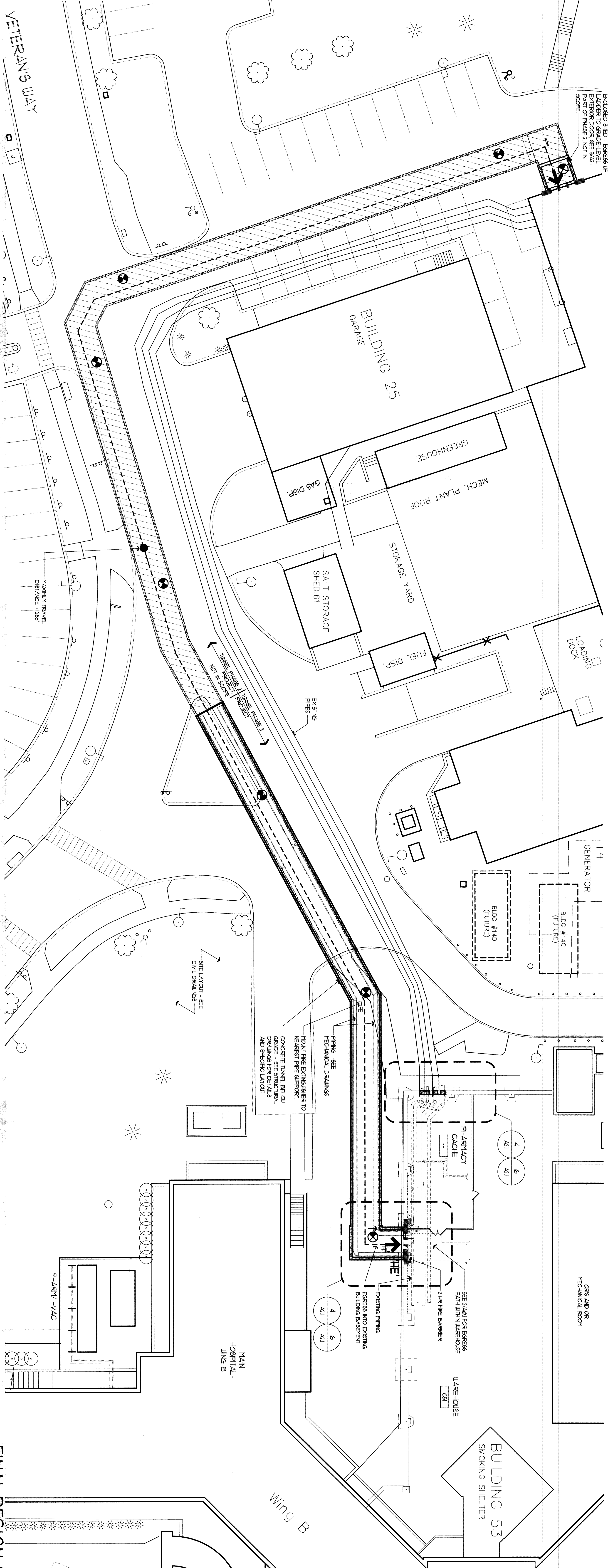
LEGEND:

- 2 HOUR FIRE BARRIER (1/2" RE BAR AND FIVE DARTERS)
- WALL STRUCTURE LOCATED
- EXIT
- EXISTING BUILDING TO REMAIN (NOT IN CONTACT)
- EXIT SIGN
- HORIZONTAL EXIT

LIFE SAFETY SCHEDULE			
CODE	NFPA 101 (2012 EDITION)	ACTUAL / (IF APPLICABLE)	
CATEGORY	INDUSTRIAL/HORIZONTAL	CHAS 7 SECTION	
OCCUPANCY	UTILITY CHAS (S)	CHAS 7 SECTION	
CONSTRUCTION		CHAS 7 SECTION	
TYPE	MAX. TRAVEL	CHAS 7 SECTION	
MAX. TRAVEL	300'	CHAS 7 SECTION	
MAX. TRAVEL	300'	CHAS 7 SECTION	
MAXIMUM DEAD	30'	CHAS 7 SECTION	
END CORRIDOR		CHAS 7 SECTION	
MINIMUM	3'-6"	CHAS 7 SECTION	
CORRIDOR WIDTH		CHAS 7 SECTION	
RATINGS	NO RATING REQUIRED	CHAS 7 SECTION	
CORRIDORS		CHAS 7 SECTION	



2 PARTIAL EGRESS PLAN
SCALE: 1/8" = 1'-0"

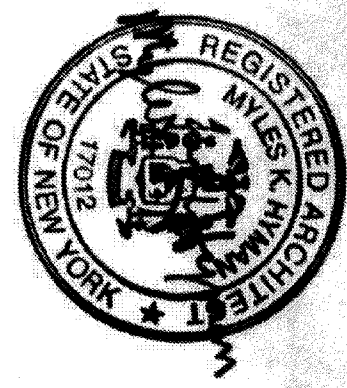


1 TUNNEL EGRESS PLAN
SCALE: 1/8" = 1'-0"



CONSULTANTS:

EBERLIN AND EBERLIN P.C.
31 SODOK ROAD, BREWSTER, NEW YORK 12009
CONSULTING ENGINEERS
444-234-2345 FAX
444-234-2345 FAX



ARCHITECT/ENGINEERS:
Hymman & Hayes
6 WENDLEY COURT, ALBANY, NEW YORK 12205
(518) 452-9470 (518) 452-3783 FAX
Over 20 years of quality architectural service

HHA Proj: 12072

LIFE SAFETY AND RATED WALL PLAN
Approved Project Director
Carole J. Hayes

REPAIR HOT WATER LINES
PHASE III
Stratton VA Medical Center
Albany, New York
Date: MAY 10, 2009
Checked: MKH
Drawn: LBRS

Project Number: VA 52848-10-814
Building Number: -
Drawing Number: A0.1
Dwg 14 of 19

Office of Construction and Facilities Management
Department of Veterans Affairs

