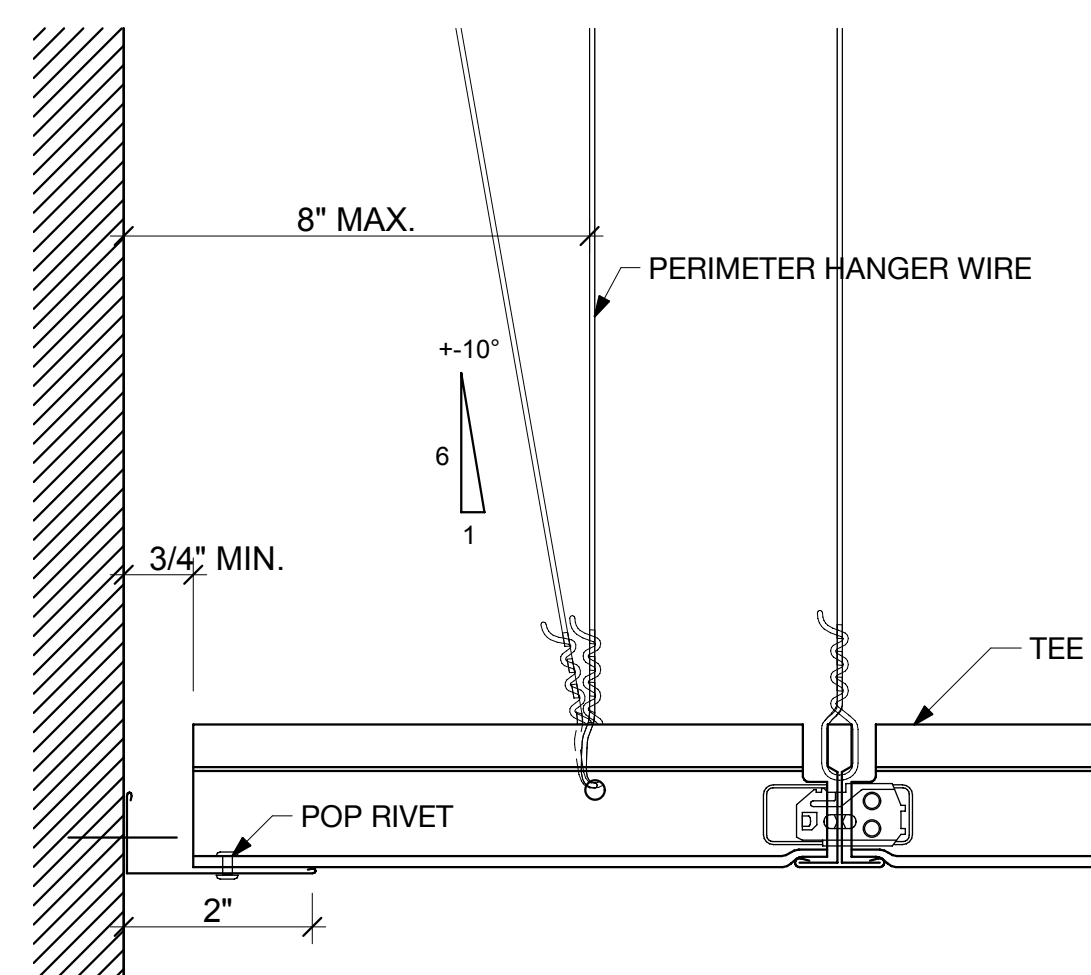
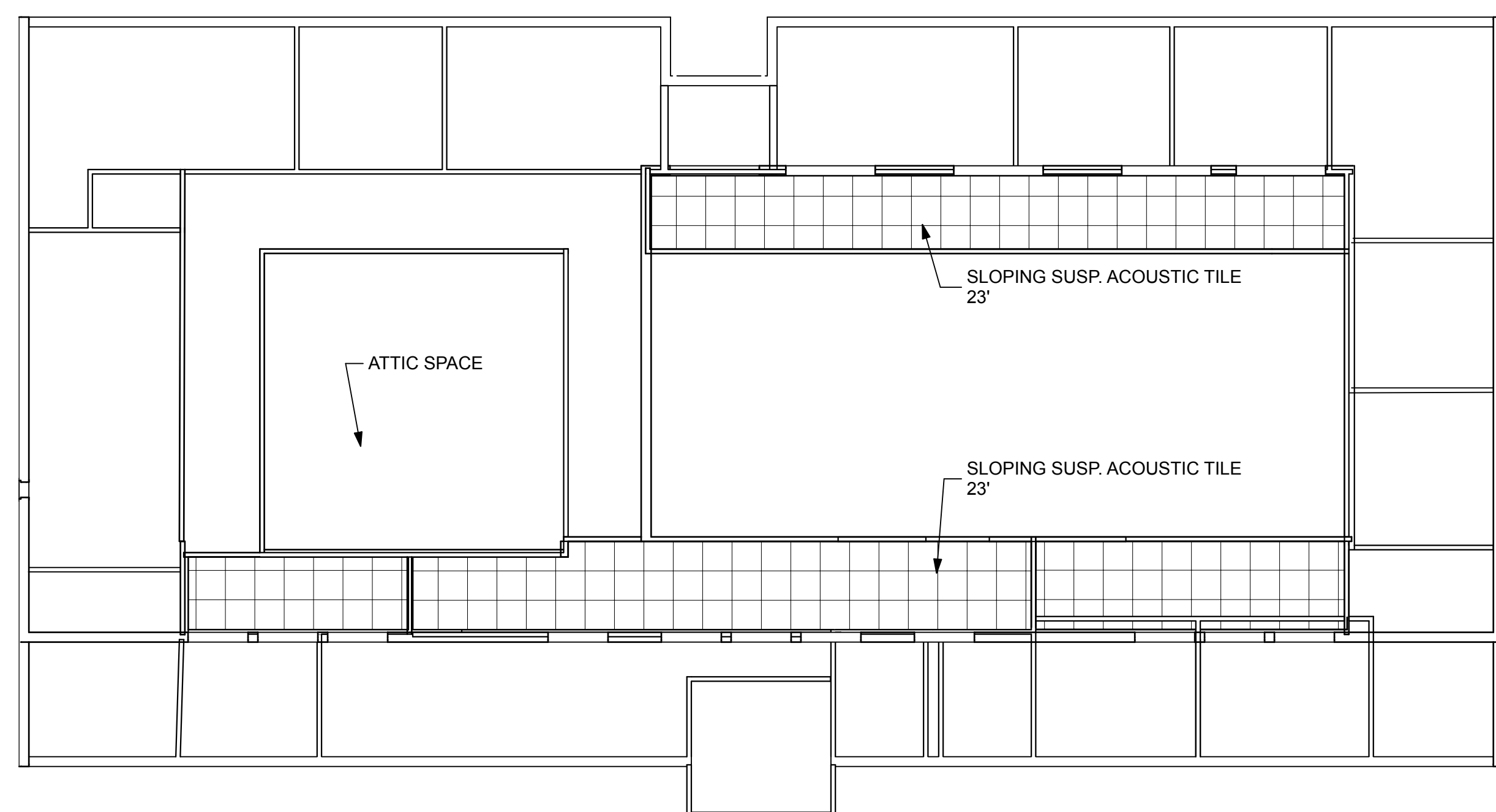
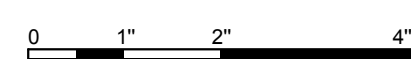


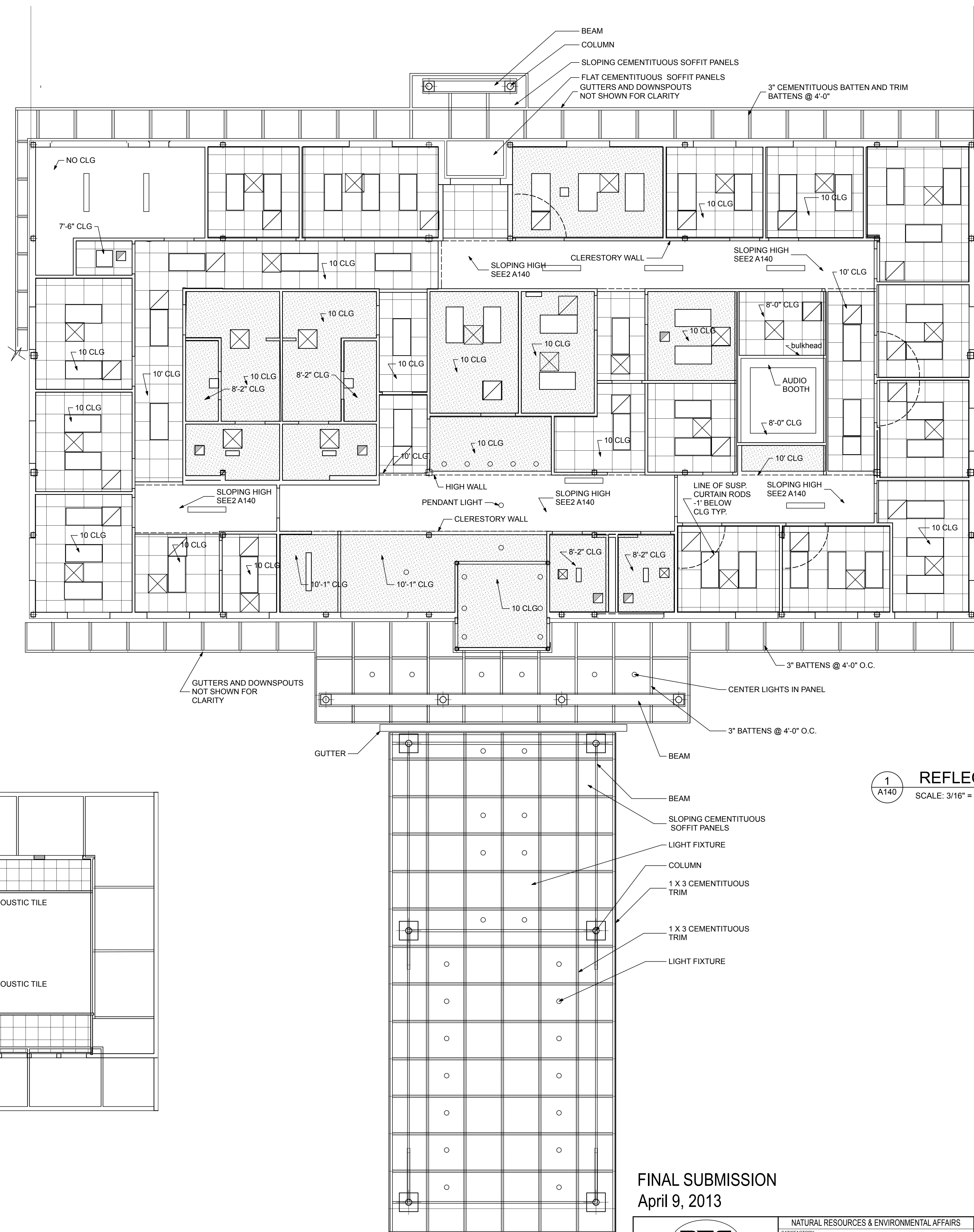
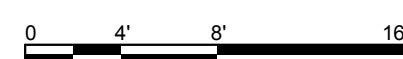
3 SUSP. GYP BRD.
A140 NOT TO SCALE



4 SUSP. ACOUSTIC TILE
A140 SCALE: 6\"/>



2 CLERESTORY RCP
A140 SCALE: 1/8\"/>



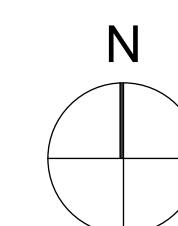
LEGEND:

- 2 X 2 ACOUSTICAL TILE
- SUSP GYP BRD CEILING
- SOFFIT PANELS
- HVAC SUPPLY
- HVAC RETURN
- EXHAUST FAN
- LIGHT FIXTURES

- NOTES:
- ALL SUSPENDED ACOUSTICAL TILE CEILINGS SHALL BE 8'-2" AFF EXCEPT WHERE NOTED. COORDINATE GRID WITH ELECTRICAL AND HVAC.
 - ALL HEADERS AT 10' CEILINGS SHALL BE 9'-8" AFF.
 - HANGER WIRE SHALL BE 12 GA.
 - HANGERS @ 8" MAX FROM WALL. PROVIDE 2" WALL ANGLE FASTEN TO WALL.
 - INSTALL GRID PER MANUF'S INSTRUCTIONS.
 - AVOID CEILING TILE LESS THAN 3" WHERE POSSIBLE.
 - COORDINATE CLG. GRID WITH ELECTRICAL AND MECHANICAL DOCUMENTS.
 - COORDINATE THE ACOUSTIC TILE CEILING IN AUDIO BOOTH ROOM WITH AUDIO BOOTH SUPPLIER.

1 REFLECTIVE CEILING PLAN
A140

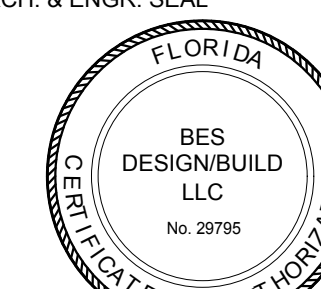
SCALE: 3/16" = 1'-0"



FINAL SUBMISSION
April 9, 2013



766 MIDDLE ST., FAIRHOPE, AL 36532 251-590-5778
ARCH. & ENGR. SEAL



NATURAL RESOURCES & ENVIRONMENTAL AFFAIRS		P.W. DWG. NO.		DEPARTMENT OF THE NAVY NAVAL FACILITIES ENGINEERING COMMAND	
SATISFACTORY TO DATE		DRAWN BY		NAVAL SUPPORT ACTIVITY	
	SAFETY DEPARTMENT	RWC		PANAMA CITY, FLORIDA	
SATISFACTORY TO DATE		CHECKED BY		CONSTRUCT NAVAL BRANCH HEALTH CLINIC	
	FIRE DEPARTMENT	BC		PANAMA CITY	
SATISFACTORY TO DATE		SUPERVISOR		REFLECTIVE CEILING PLAN	
	PUBLIC WORKS SUPERVISOR	WWB			
SATISFACTORY TO DATE		APPROVED	DATE	SIZE	CODE IDENT. NO.
				F	N/A
				HQMC PROJ. NO.	520-13-200
				CONSTR. CONTR. NO.	
				SCALE	AS NOTED
				MACC.	
				T.O.#	
				SHEET	8 OF 32