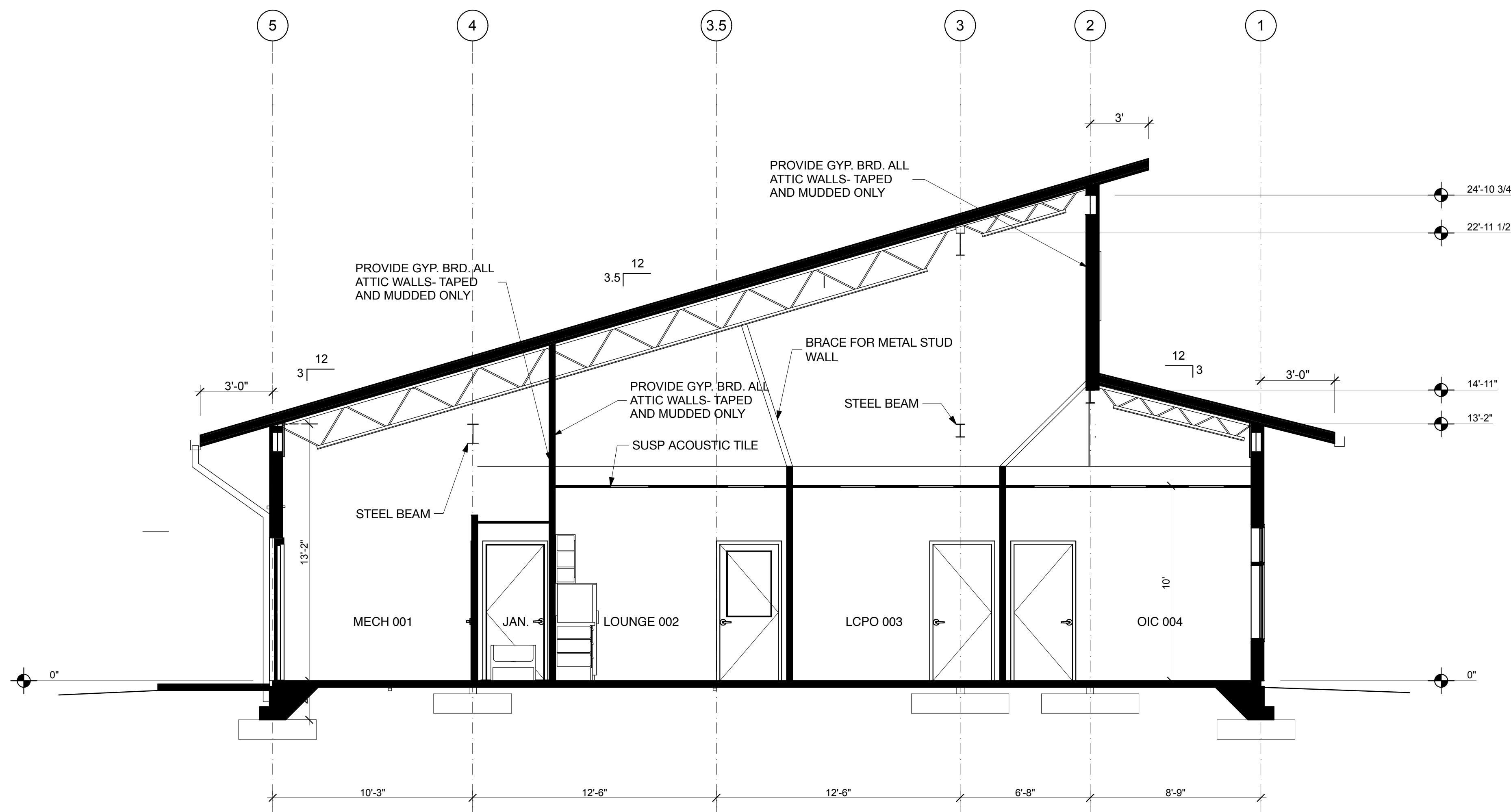
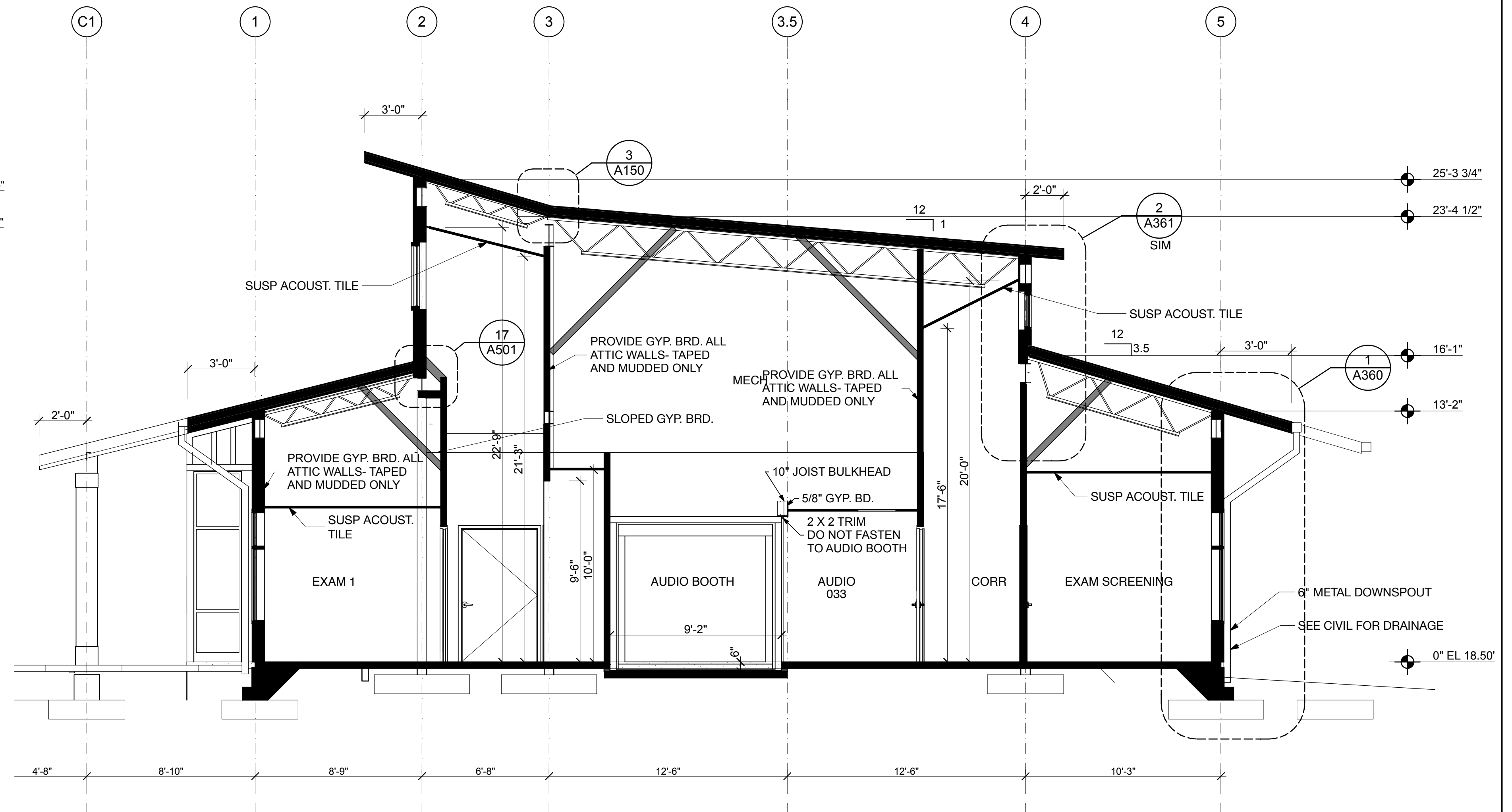


1 BUILDING SECTION
A301 SCALE: 1/4" = 1'-0"



3 SECTION
A301 SCALE: 1/4" = 1'-0"

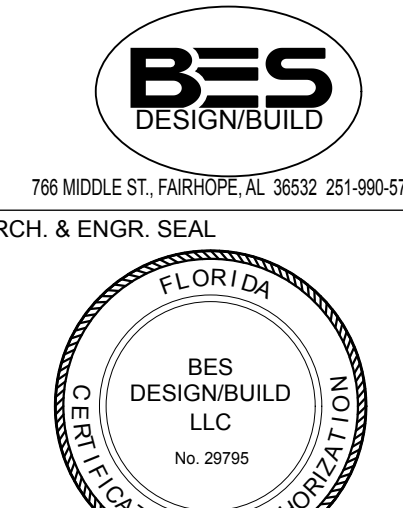


2 SECTION
A301 SCALE: 1/4" = 1'-0"

FINAL SUBMISSION
April 9, 2013

IF SHEET IS LESS THAN (30"x42") IT IS
A REDUCED PRINT; SCALE ACCORDINGLY

A301



| | |
|---|--|
| NATURAL RESOURCES & ENVIRONMENTAL AFFAIRS | |
| SATISFACTORY TO DATE | |
| SAFETY DEPARTMENT | |
| SATISFACTORY TO DATE | |
| FIRE DEPARTMENT | |
| SATISFACTORY TO DATE | |
| PUBLIC WORKS SUPERVISOR | |
| SATISFACTORY TO DATE | |

| | |
|----------------------|------|
| P.W. DWG. NO. | |
| DRAWN BY | RWC |
| CHECKED BY | BC |
| SUPERVISOR | WWB |
| APPROVED | DATE |
| PUBLIC WORKS OFFICER | |

| | |
|--------------------------------------|--------------------|
| DEPARTMENT OF THE NAVY | |
| NAVAL FACILITIES ENGINEERING COMMAND | |
| PANAMA CITY, FLORIDA | |
| CONSTRUCT NAVAL BRANCH HEALTH CLINIC | |
| PANAMA CITY | |
| BUILDING SECTIONS | |
| SIZE | CODE IDENT. NO. |
| F | N/A |
| HQMC PROJ. NO. | CONSTR. CONTR. NO. |
| 520-13-200 | |
| SCALE | AS NOTED |
| MACC. | T.O.# |
| | SHEET 12 OF 32 |