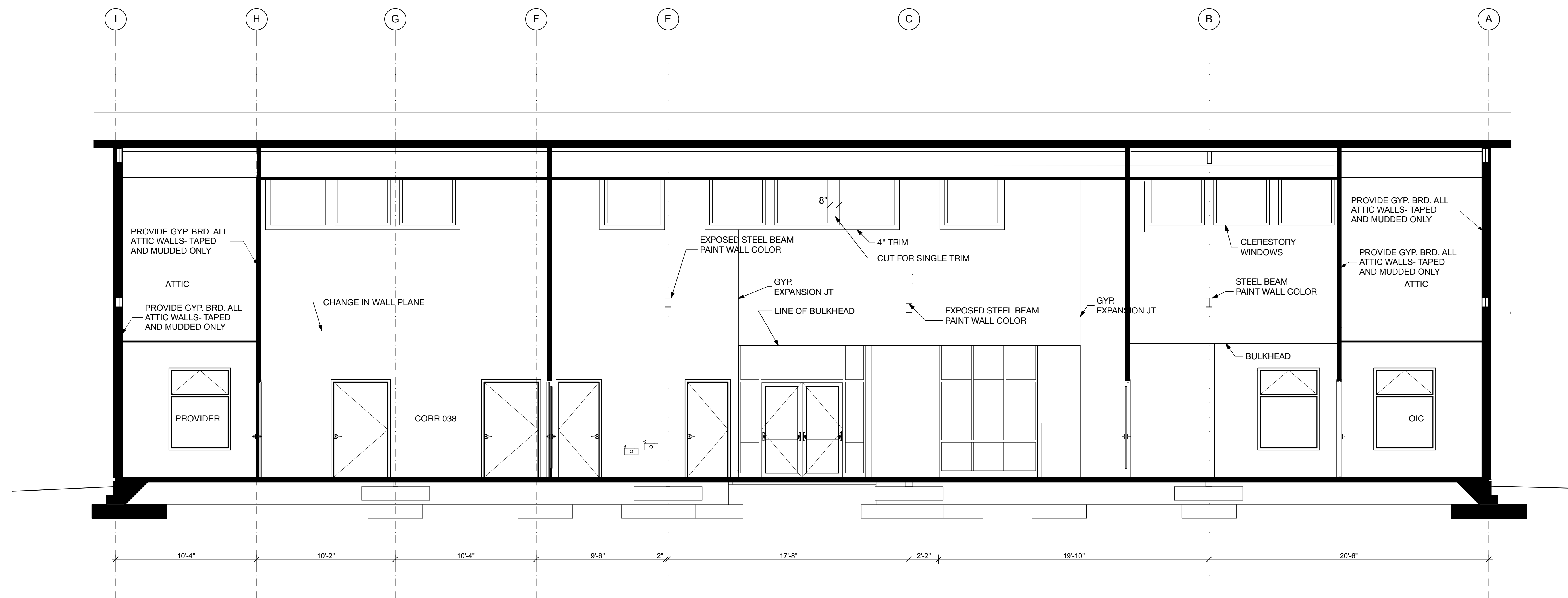


SECTION
1 A302
SCALE: 1/4" = 1'-0"

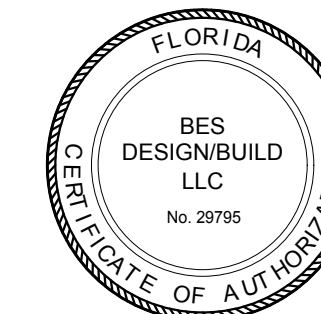


SECTION
2 A302
SCALE: 1/4" = 1'-0"

FINAL SUBMISSION
April 9, 2013

IF SHEET IS LESS THAN (30"x42") IT IS
A REDUCED PRINT; SCALE ACCORDINGLY

A302



BES DESIGN/BUILD 766 MIDDLE ST., FAIRHOPE, AL 36532 251-590-5778 ARCH. & ENGR. SEAL	NATURAL RESOURCES & ENVIRONMENTAL AFFAIRS		P.W. DWG. NO.		DEPARTMENT OF THE NAVY NAVAL FACILITIES ENGINEERING COMMAND PANAMA CITY, FLORIDA	
	SATISFACTORY TO DATE		DRAWN BY RWC		NAVAL SUPPORT ACTIVITY	
	SAFETY DEPARTMENT		CHECKED BY BC		CONSTRUCT NAVAL BRANCH HEALTH CLINIC PANAMA CITY	
	FIRE DEPARTMENT		SUPERVISOR WWB		BUILDING SECTIONS	
PUBLIC WORKS SUPERVISOR		APPROVED DATE		SIZE F		
SATISFACTORY TO DATE		PUBLIC WORKS OFFICER		CODE IDENT. NO. N/A		
				HQM/C PROJ. NO. 520-13-200		
				CONSTR. CONTR. NO.		
				SCALE AS NOTED		
				MACC.		
				T.O.#		
				SHEET 13 OF 32		