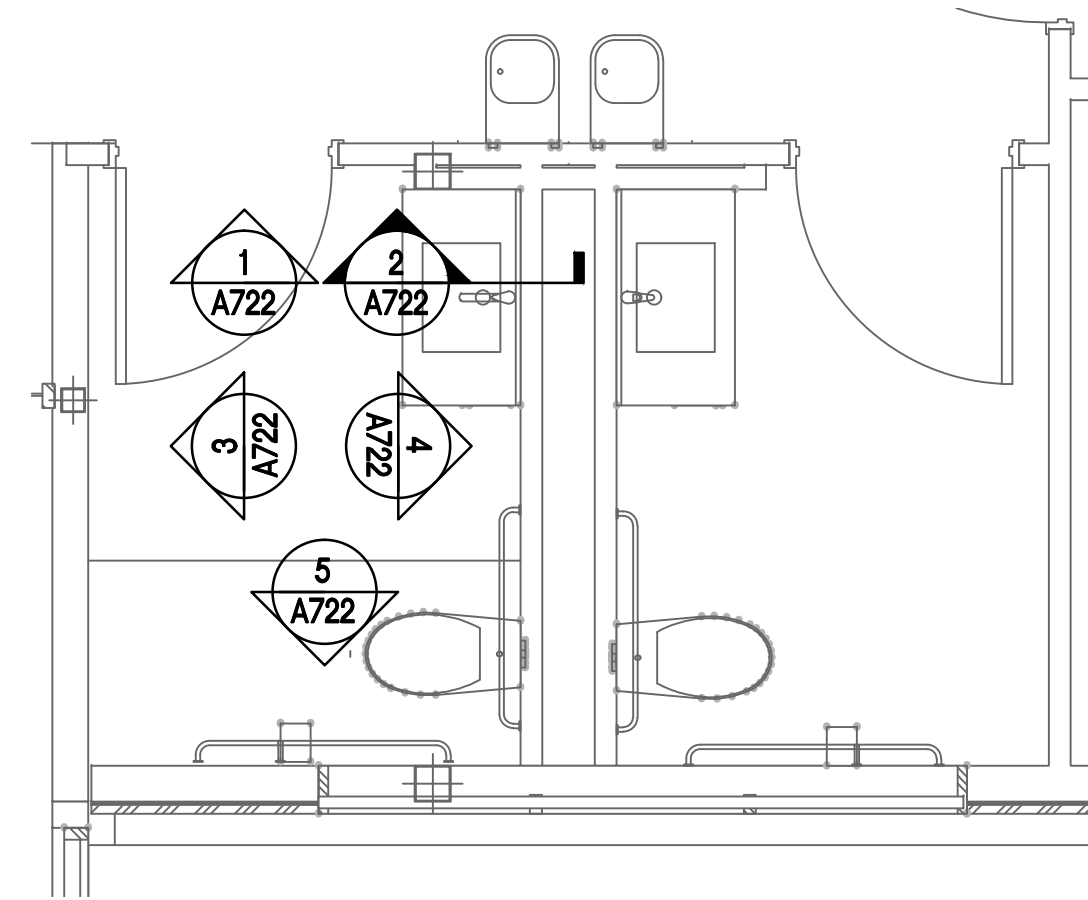
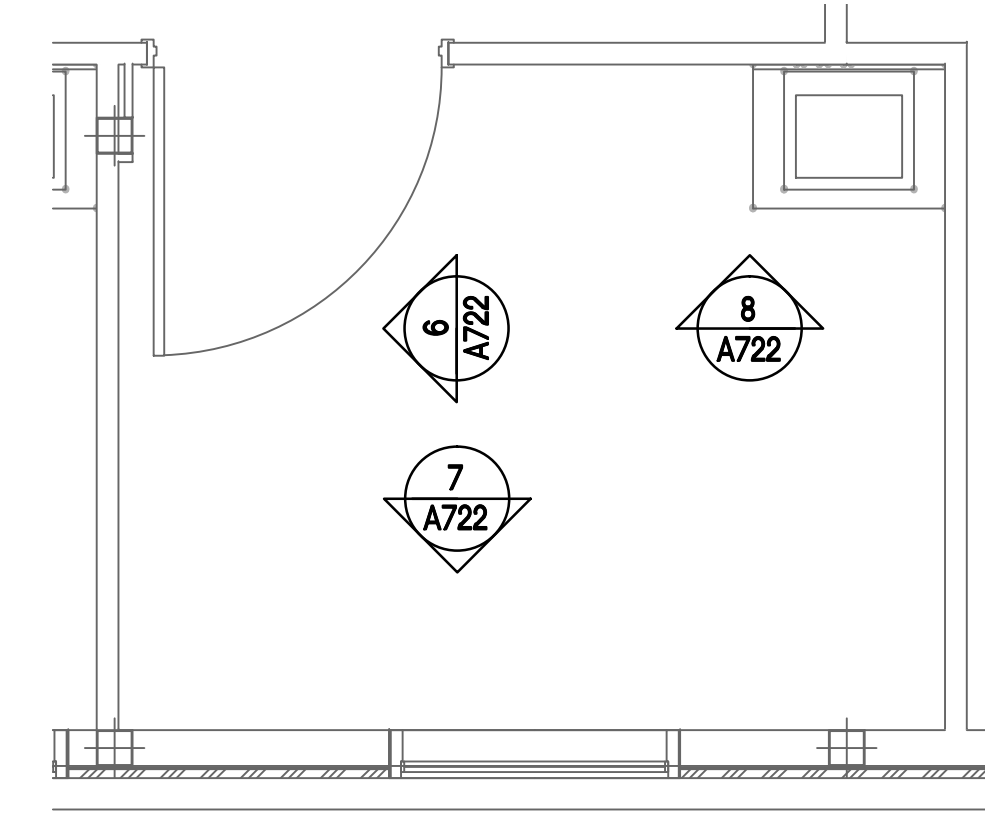


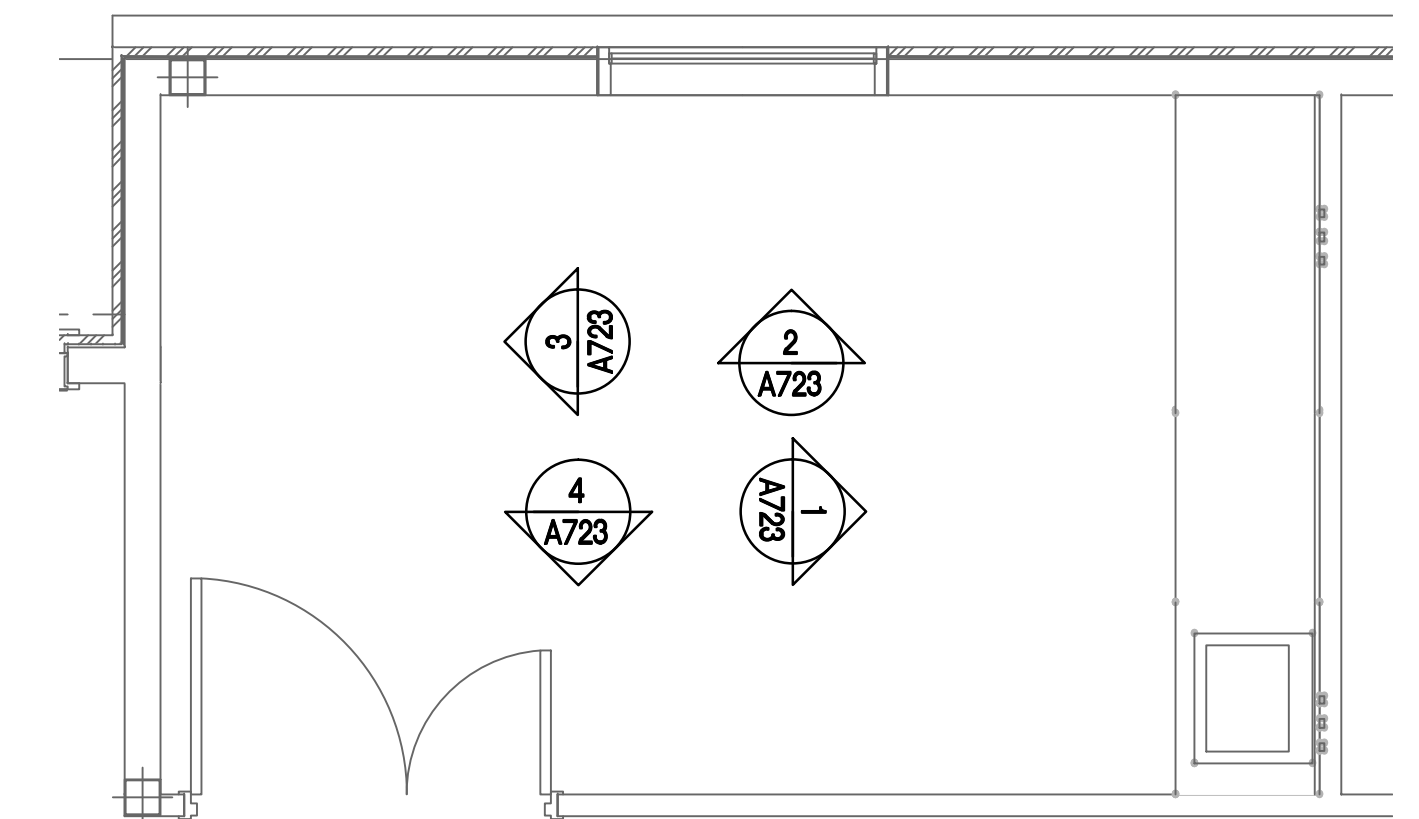
1 RECEPTION: ENLARGED PLAN
A401 3/8" = 1'-0"



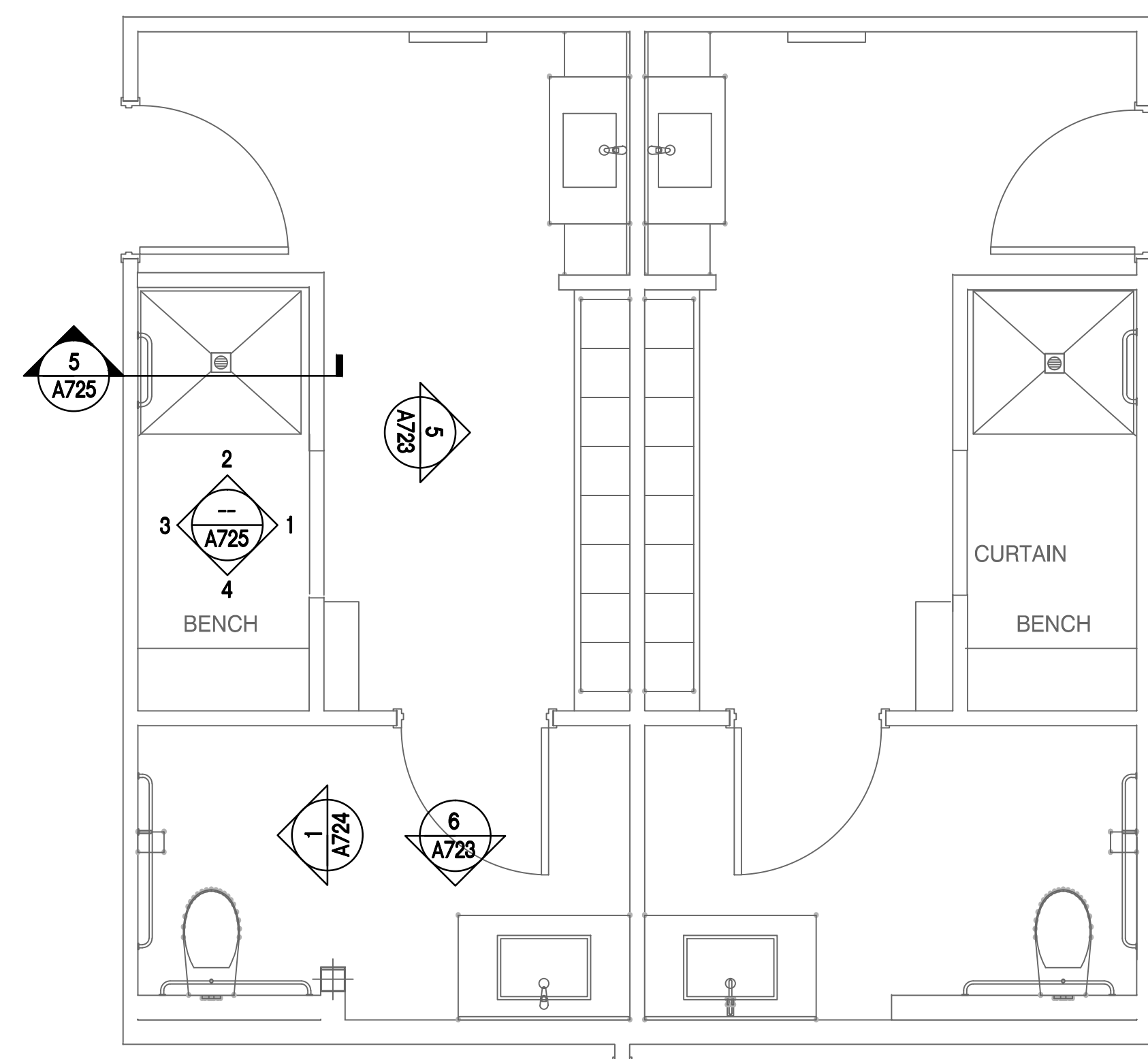
2 PUBLIC TOILET: ENLARGED PLAN
A401 3/8" = 1'-0"



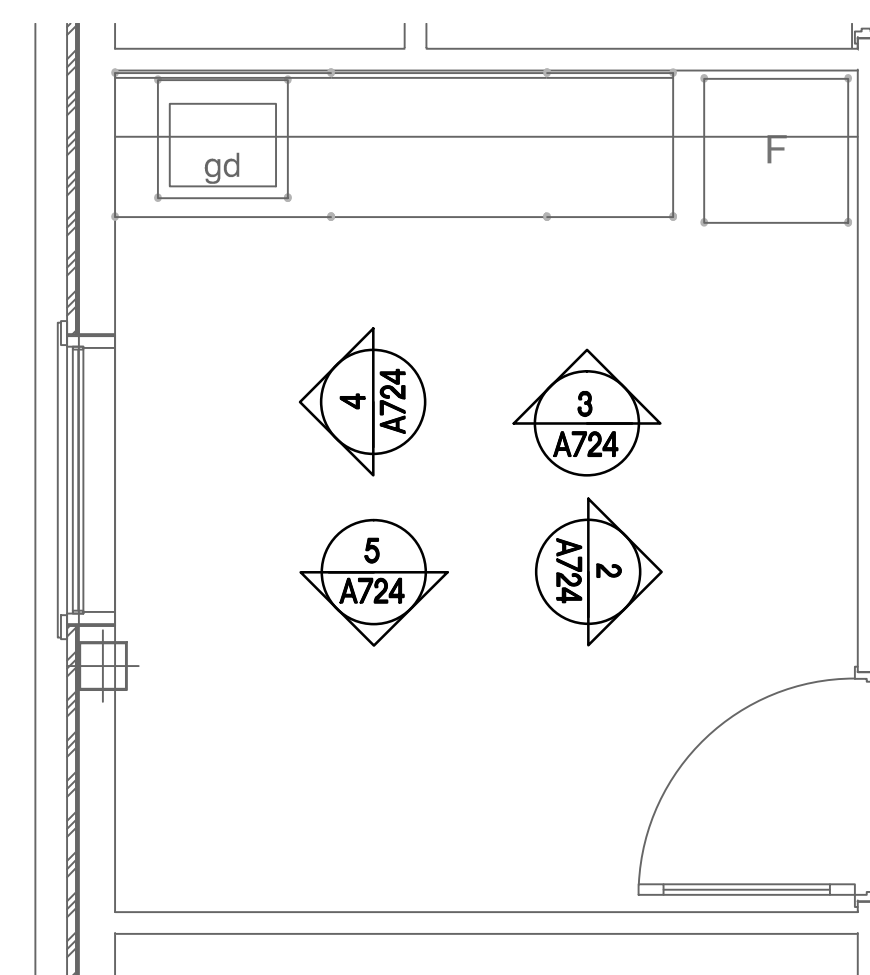
3 EXAM ROOM: ENLARGED PLAN
A401 3/8" = 1'-0"



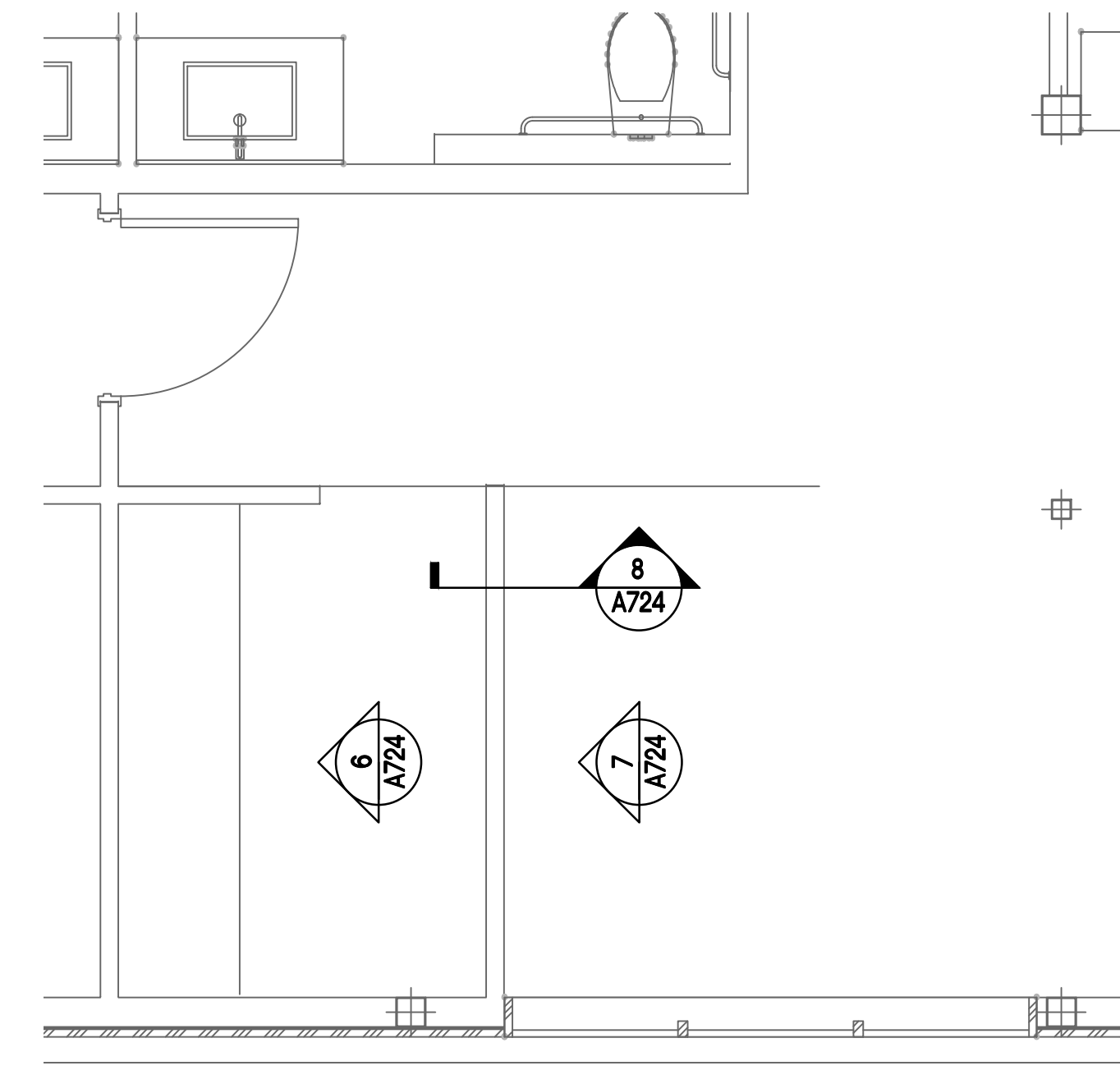
4 TREATMENT: ENLARGED PLAN
A401 3/8" = 1'-0"



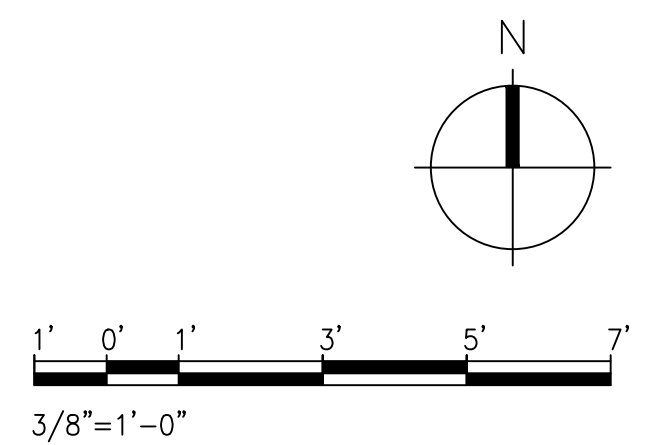
5 LOCKER ROOM + TOILET: ENLARGED PLAN
A401 3/8" = 1'-0"



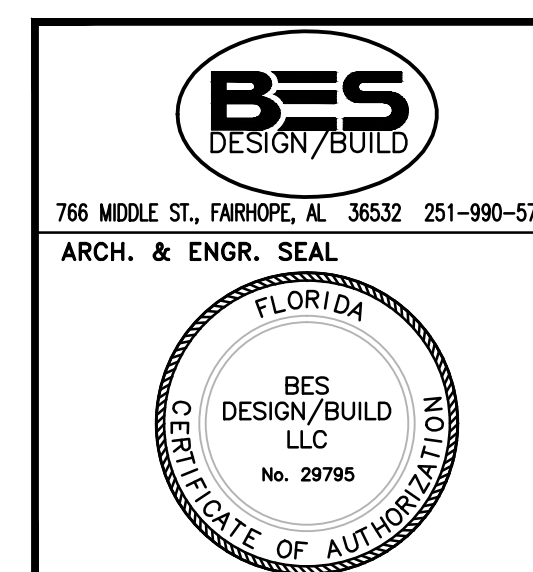
6 LOUNGE: ENLARGED PLAN
A401 3/8" = 1'-0"



7 KIOSK/CHECK-IN + WAITING AREA: ENLARGED PLAN
A401 3/8" = 1'-0"



FINAL SUBMISSION
APRIL 9, 2013



NATURAL RESOURCES & ENVIRONMENTAL AFFAIRS	P.W. DWG. NO.
SATISFACTORY TO DATE	
SAFETY DEPARTMENT	DRAWN BY AAC
SATISFACTORY TO DATE	CHECKED BY KAM
FIRE DEPARTMENT	SUPERVISOR
SATISFACTORY TO DATE	APPROVED DATE
PUBLIC WORKS SUPERVISOR	PUBLIC WORKS OFFICER
SATISFACTORY TO DATE	

DEPARTMENT OF THE NAVY	NAVAL FACILITIES ENGINEERING COMMAND
NAVAL SUPPORT ACTIVITY	PANAMA CITY, FLORIDA
PANAMA CITY OUTPATIENT CLINIC	NAVAL GULF COAST HEALTH CARE
ENLARGED PLANS	
SIZE F	CODE IDENT. NO. N/A
PROJ. NO.	CONSTR. CONTR. NO.
SCALE	MACC. T.O.# SHEET 19 OF 32

IF SHEET IS LESS THAN (30"x42") IT IS A REDUCED PRINT; SCALE ACCORDINGLY	A402
--	------