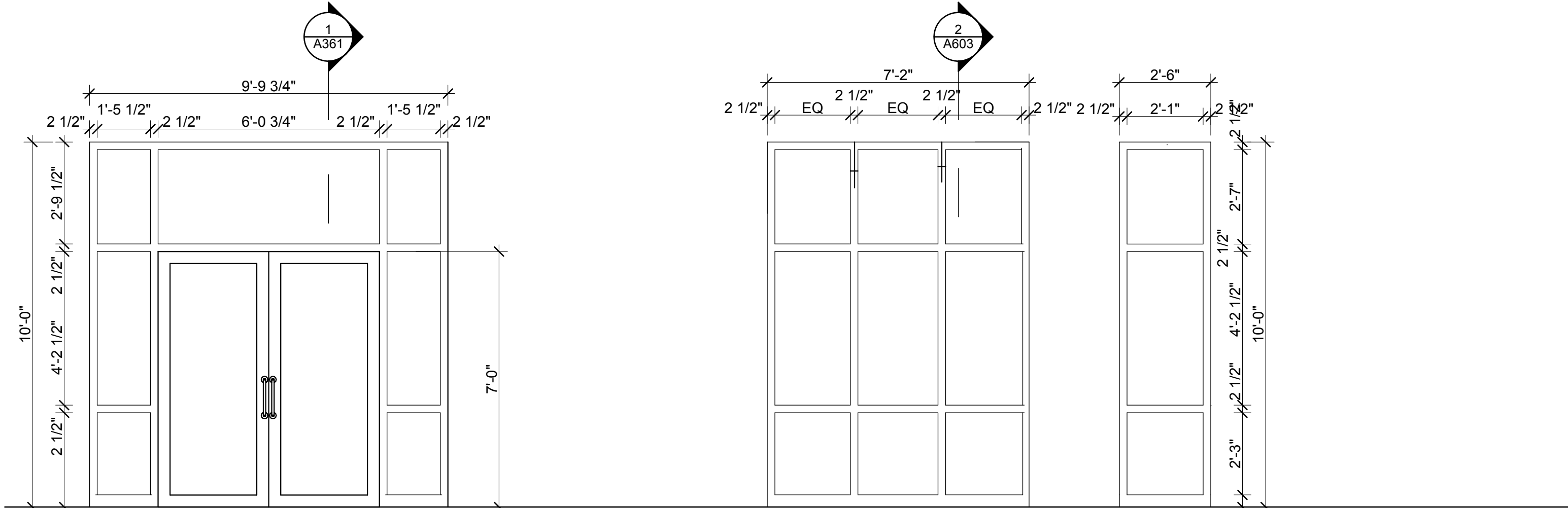


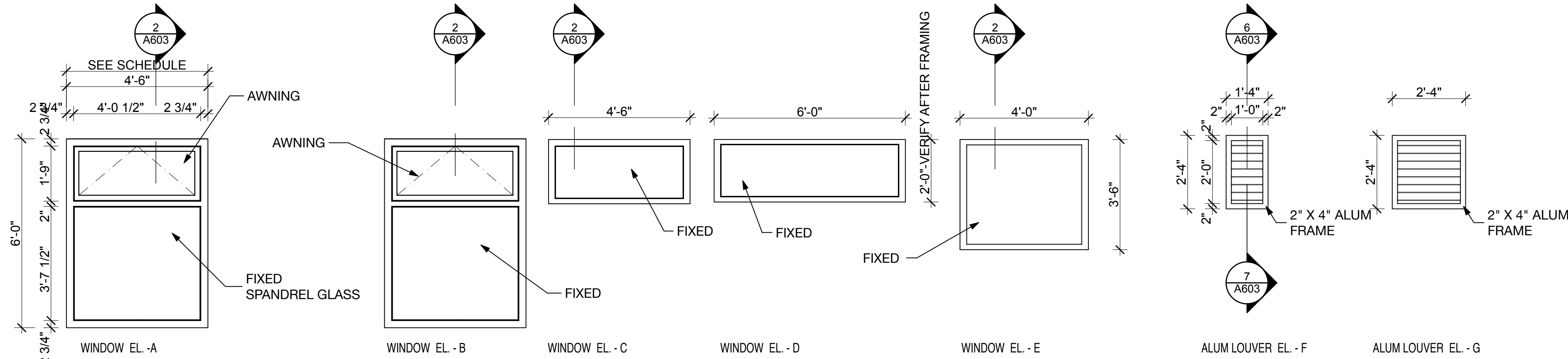
- DOOR PANEL ELEVATIONS
ALL METAL DOORS AND FRAMES SHALL MEET THE FOLLOWING:
1. STANDARD 10 OF UFC 4-010-01 (JAN 22 07).
 2. WIND LOADING OF 140 MPH
 3. ENERGY STAR RATING
 4. FINISH FOR INTERIOR WOOD DOORS SHALL BE LOW VOC CLEAR STAIN SEALER, THREE COATS
 5. FINISH FOR EXTERIOR HOLLOW METAL DOORS SHALL BE SATIN ENAMEL - THREE COATS.



- ALL ALUM. STOREFRONT DOORS AND STOREFRONT SHALL MEET THE FOLLOWING:
BASIS OF DESIGN: KAWNEER 350 IR
1. STANDARD 10 OF UFC 4-010-01 (JAN 22 07).
 2. WIND LOADING OF 140 MPH
 3. ENERGY STAR RATING, IMPACT ON GLAZING.
 4. LAMINATED GLAZING MIN. 1/4", 0.60 PVB INTERLAYER
 5. FINISH FOR EXTERIOR ALUM. KYNAR - STANDARD LIGHT CREME COLOR.

2
A602 DOOR, FRAME, STOREFRONT TYPES

SCALE: 3/8" = 1'-0"



- ALL WINDOWS SHALL MEET THE FOLLOWING:
BASIS OF DESIGN: TRACO - BLAST PSI 5.8
GSA TS01 BLAST RATING 2
MINIMAL HAZARD
1. STANDARD 10 OF UFC 4-010-01 (JAN 22 07).
NOTE: SECURED SITE. SEE DISTANCES ON A-100. ALL DISTANCES ARE IN EXCESS OF 80'-0".
 2. WIND LOADING OF 140 MPH
 3. ENERGY STAR RATING

1
A602 WINDOW ELEVATIONS

SCALE: 3/8" = 1'-0"

FINAL SUBMISSION
April 9, 2013

IF SHEET IS LESS THAN (30"x42") IT IS
A REDUCED PRINT; SCALE ACCORDINGLY

A602



| | | | | | | |
|--|---|-------------------|--|------------------------|----------------------------|----------------|
| 766 MIDDLE ST. FAIRHOPE, AL 36532 251-590-5778 ARCH. & ENGR. SEAL | NATURAL RESOURCES & ENVIRONMENTAL AFFAIRS SATISFACTORY TO DATE | P.W. DWG. NO. | DEPARTMENT OF THE NAVY NAVAL FACILITIES ENGINEERING COMMAND PANAMA CITY, FLORIDA | | | |
| | SAFETY DEPARTMENT SATISFACTORY TO DATE | DRAWN BY RWC | CONSTRUCT NAVAL BRANCH HEALTH CLINIC PANAMA CITY | | | |
| | FIRE DEPARTMENT SATISFACTORY TO DATE | CHECKED BY BC | WINDOW SCHEDULE | | | |
| | PUBLIC WORKS SUPERVISOR SATISFACTORY TO DATE | SUPERVISOR WWB | SIZE F | CODE IDENT. NO. N/A | NAV FAC DRAWING NO. N/A | |
| | | APPROVED DATE | SCALE AS NOTED | MACC. | T.O.# | SHEET 22 OF 32 |