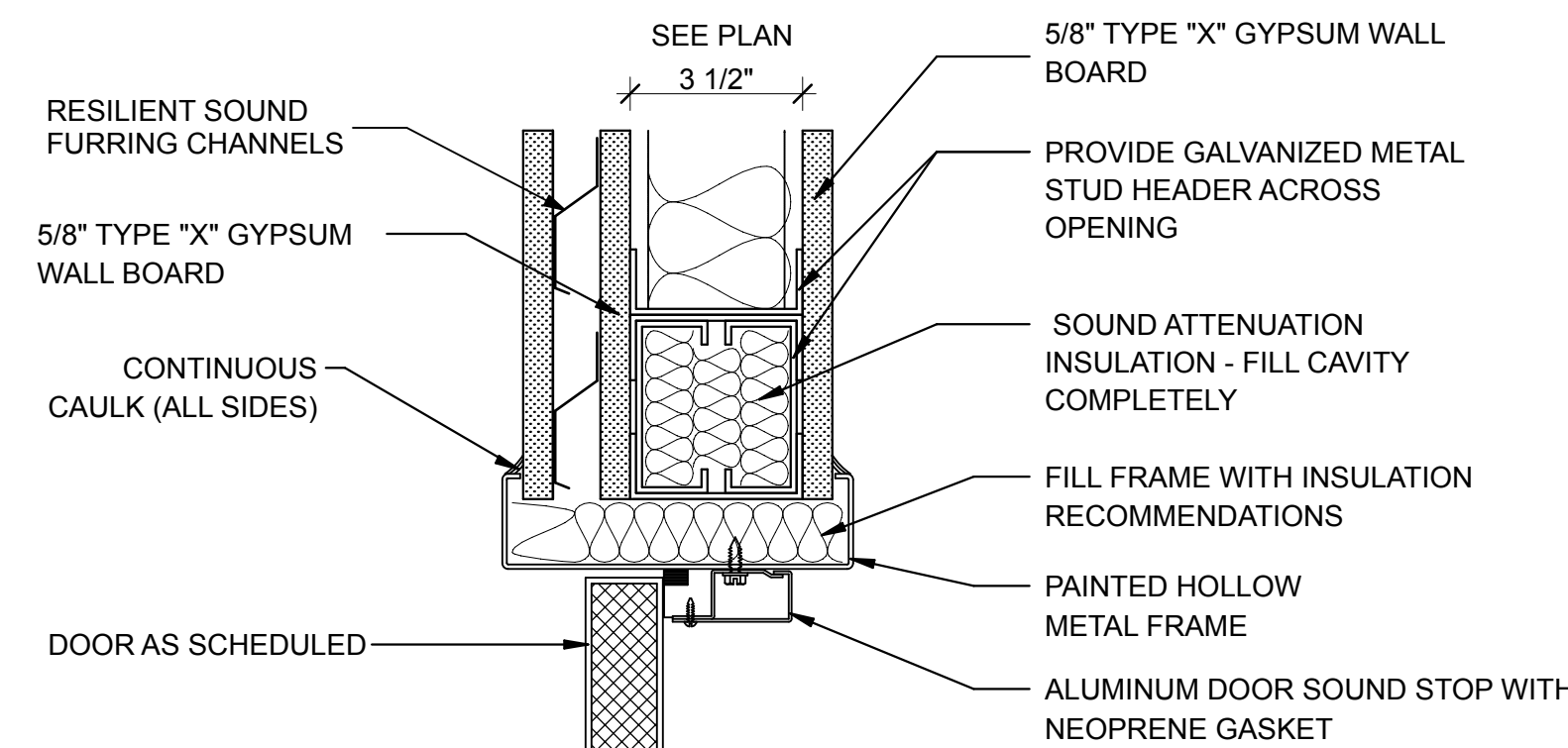
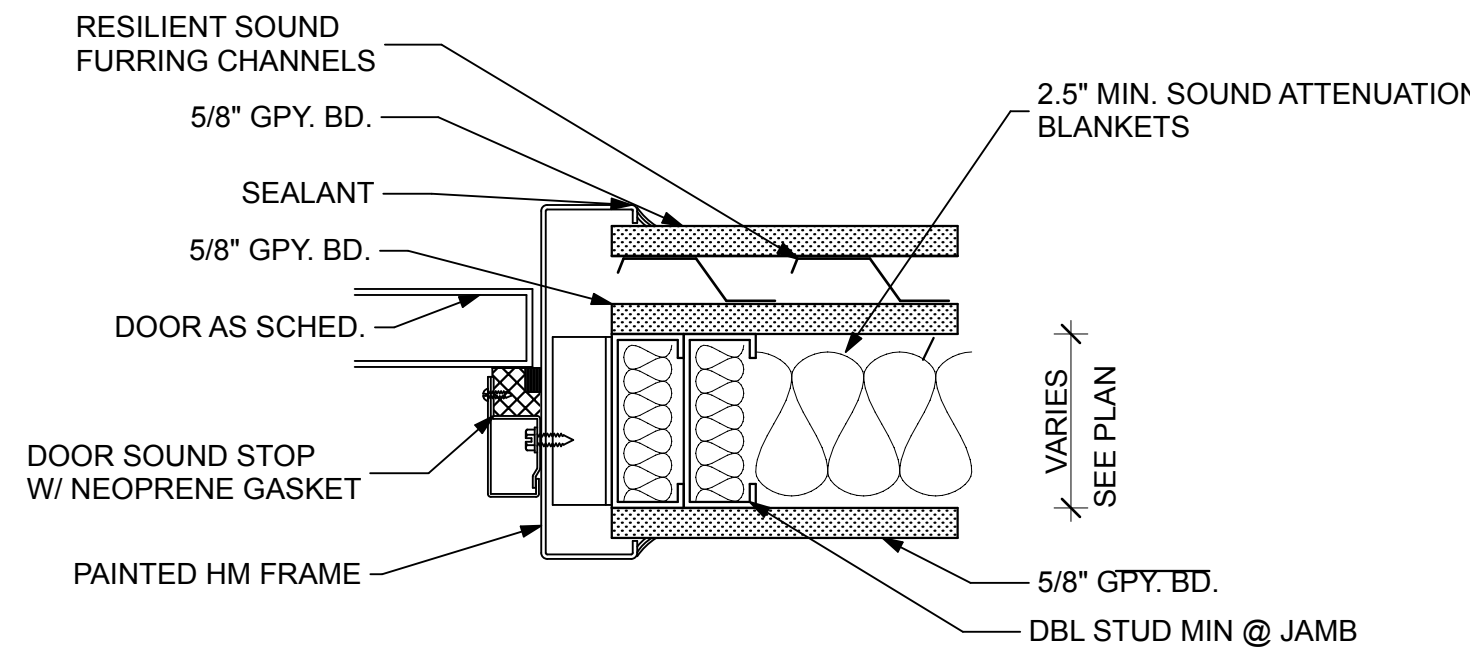


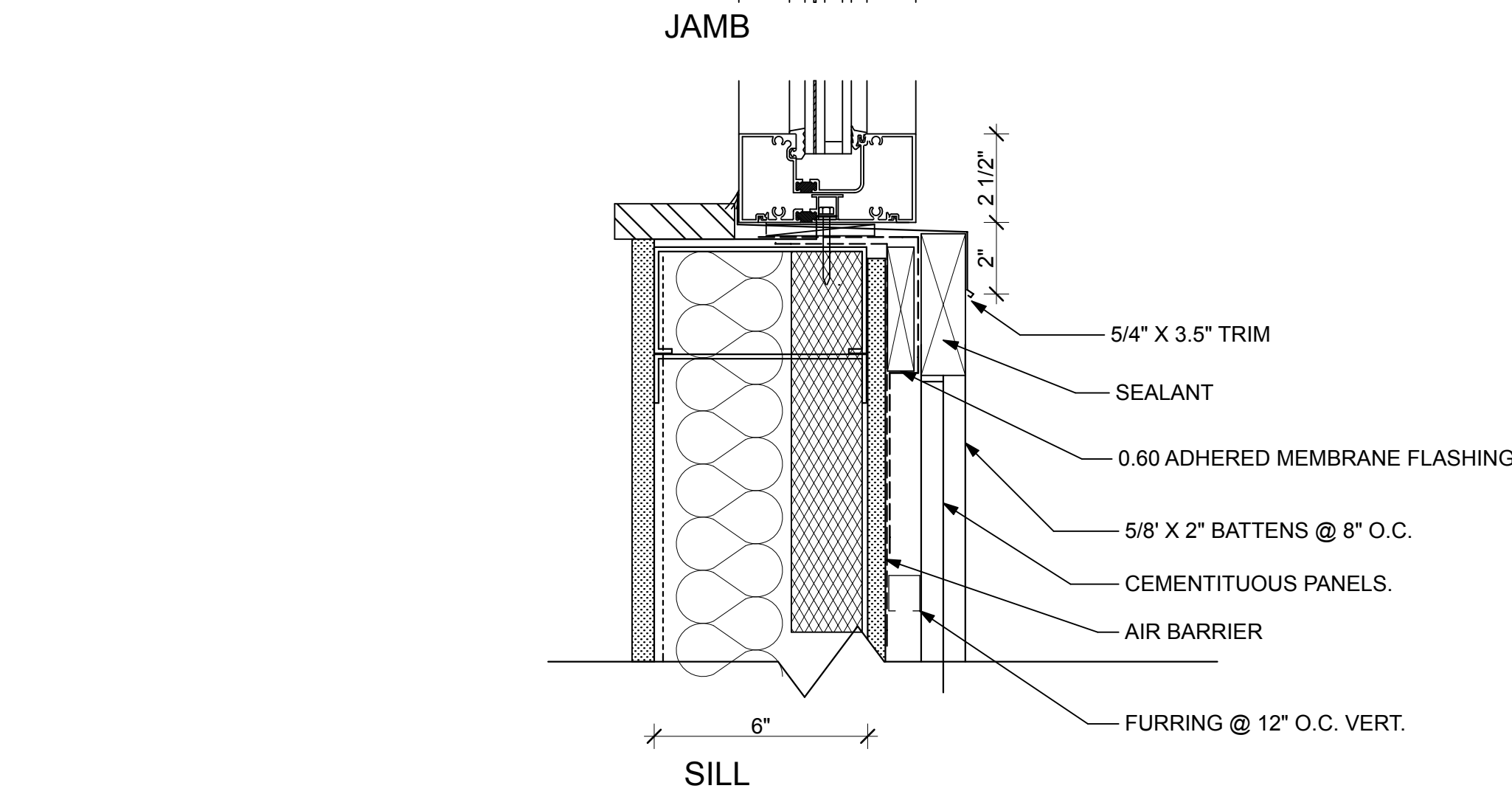
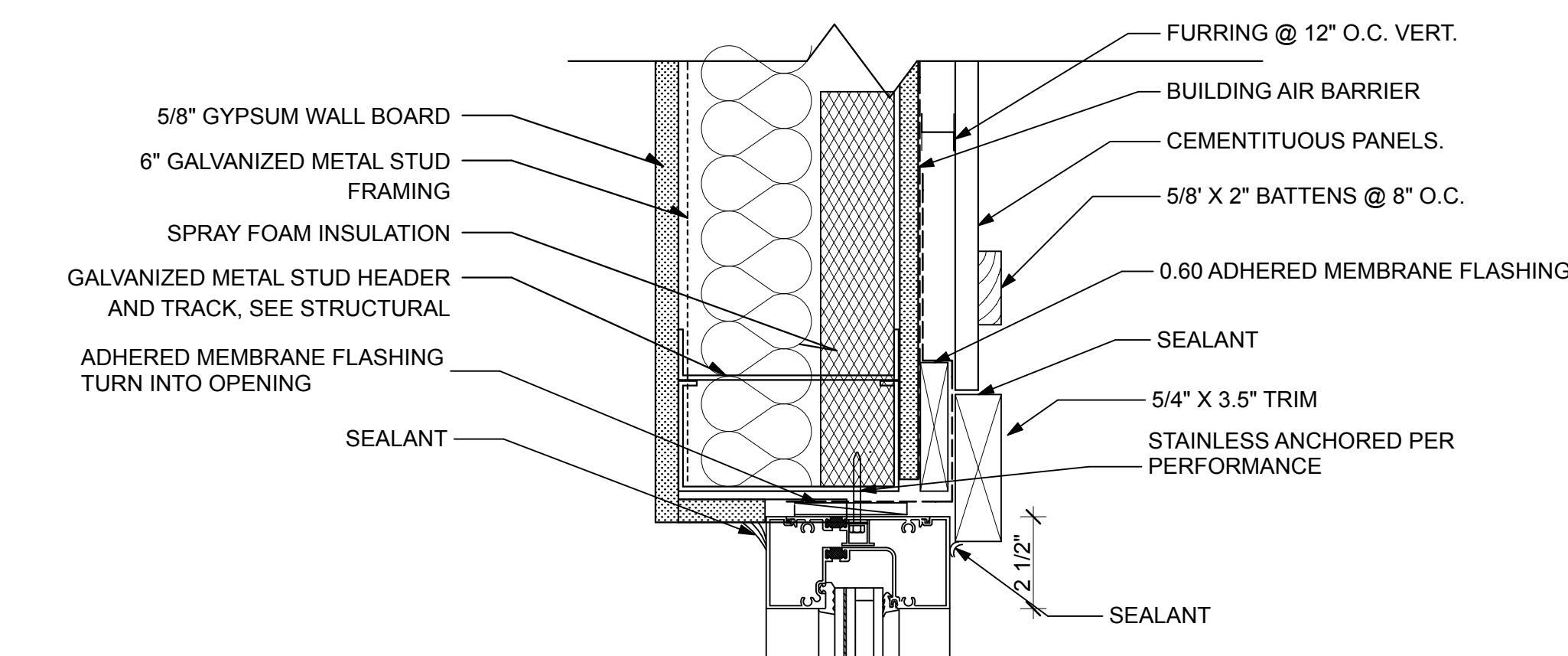
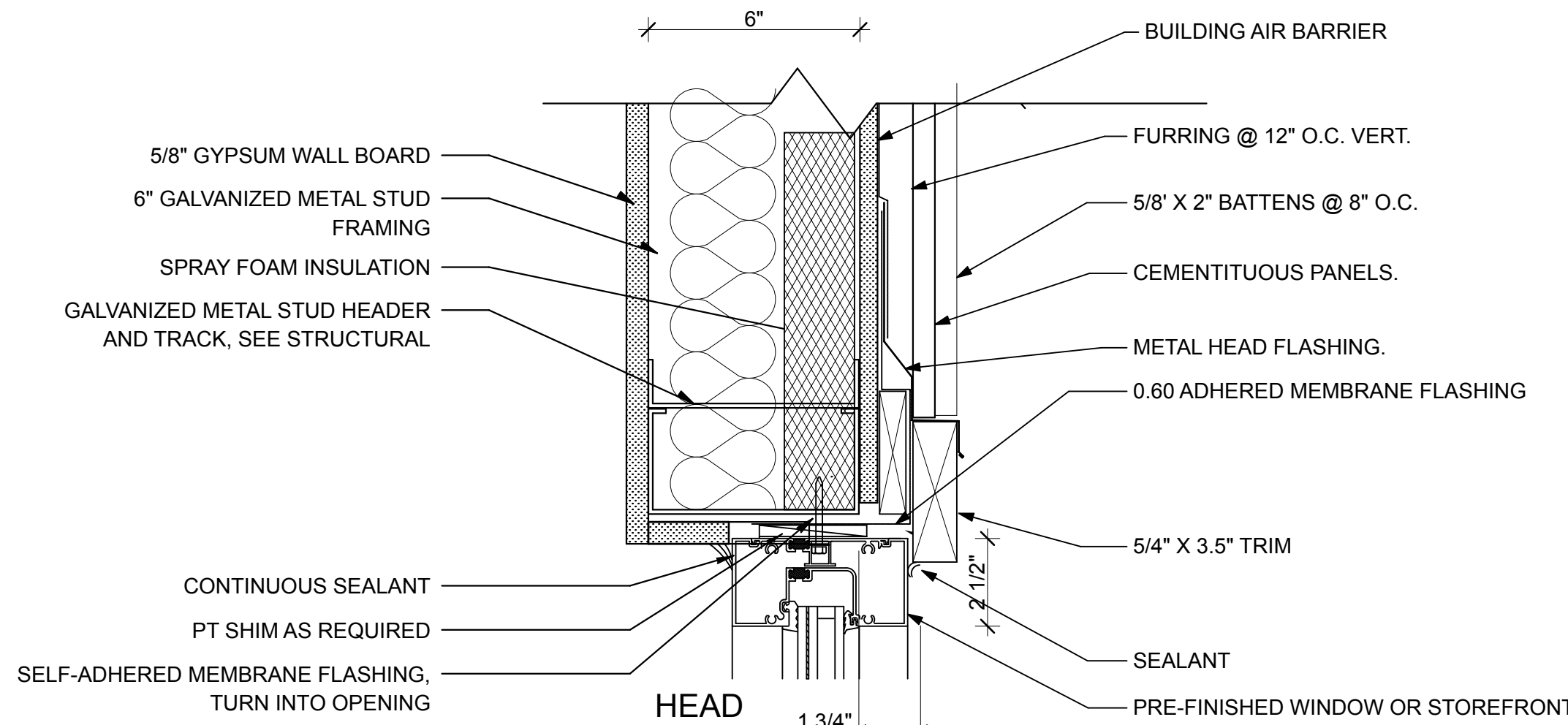
1 INT. FRAME DETAIL

SCALE: 3" = 1'-0"



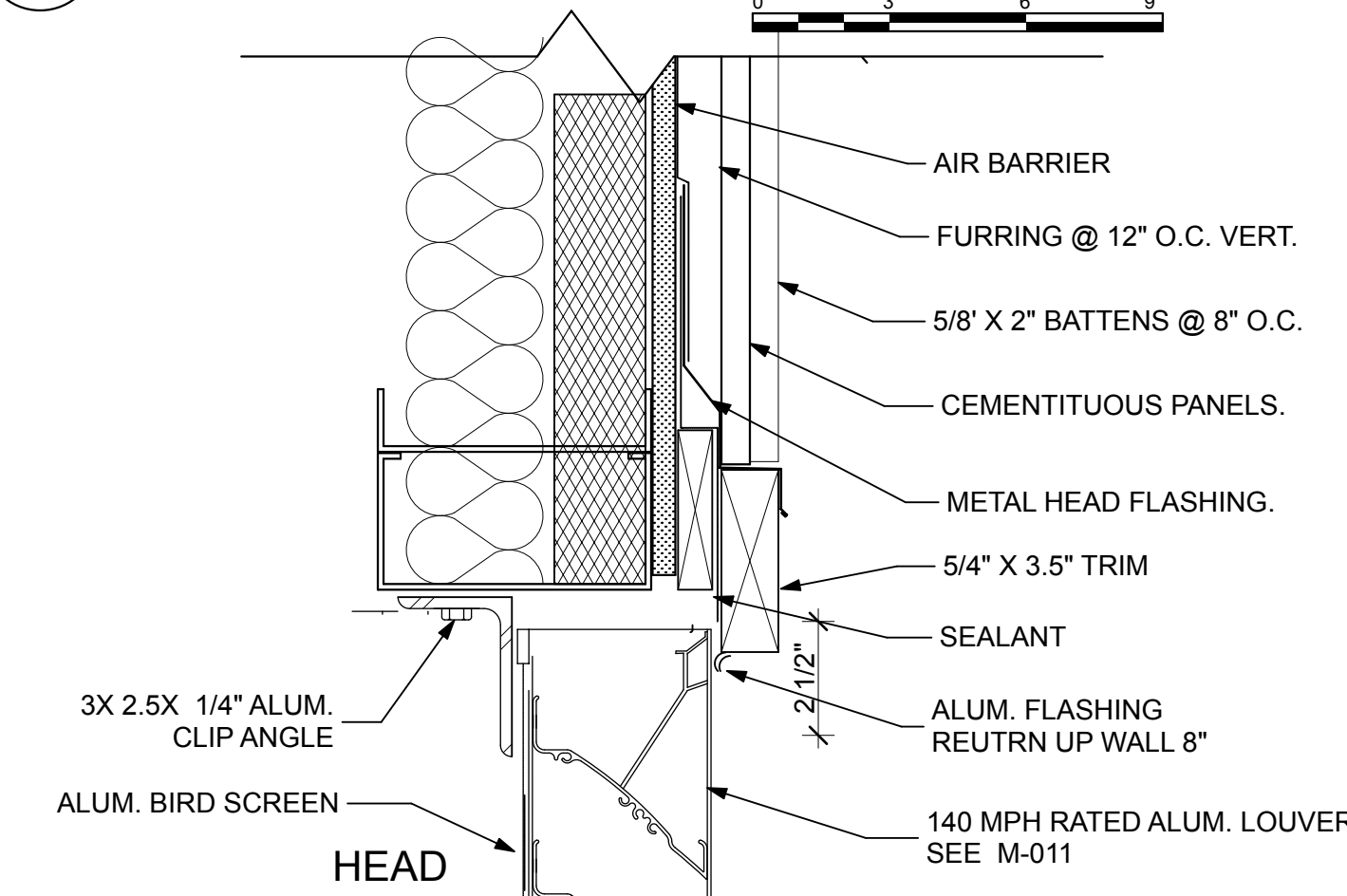
4 INT.FRAME DETAIL

SCALE: 3" = 1'-0"



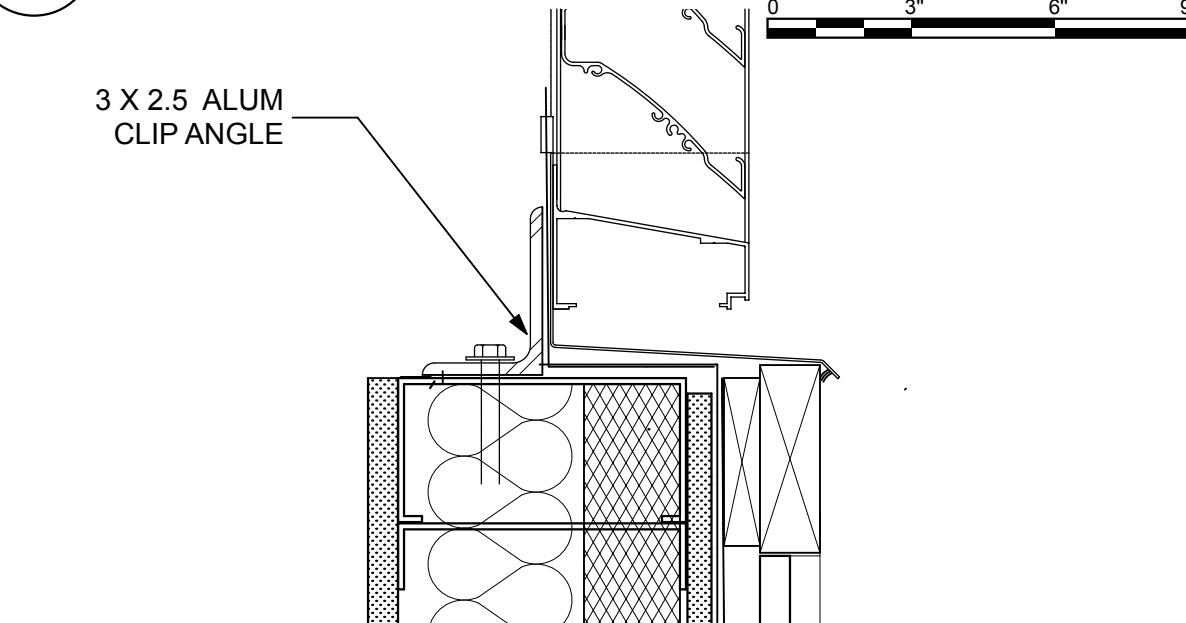
2 EXT. WINDOW DETAILS

SCALE: 3" = 1'-0"



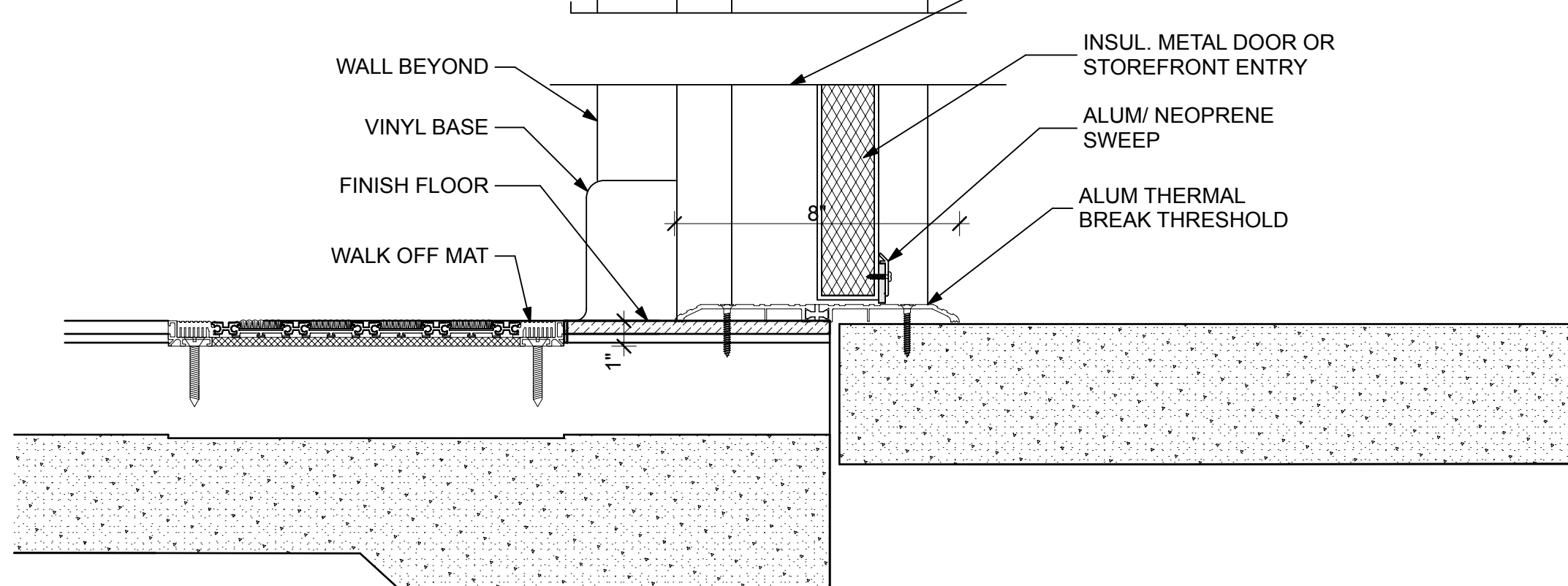
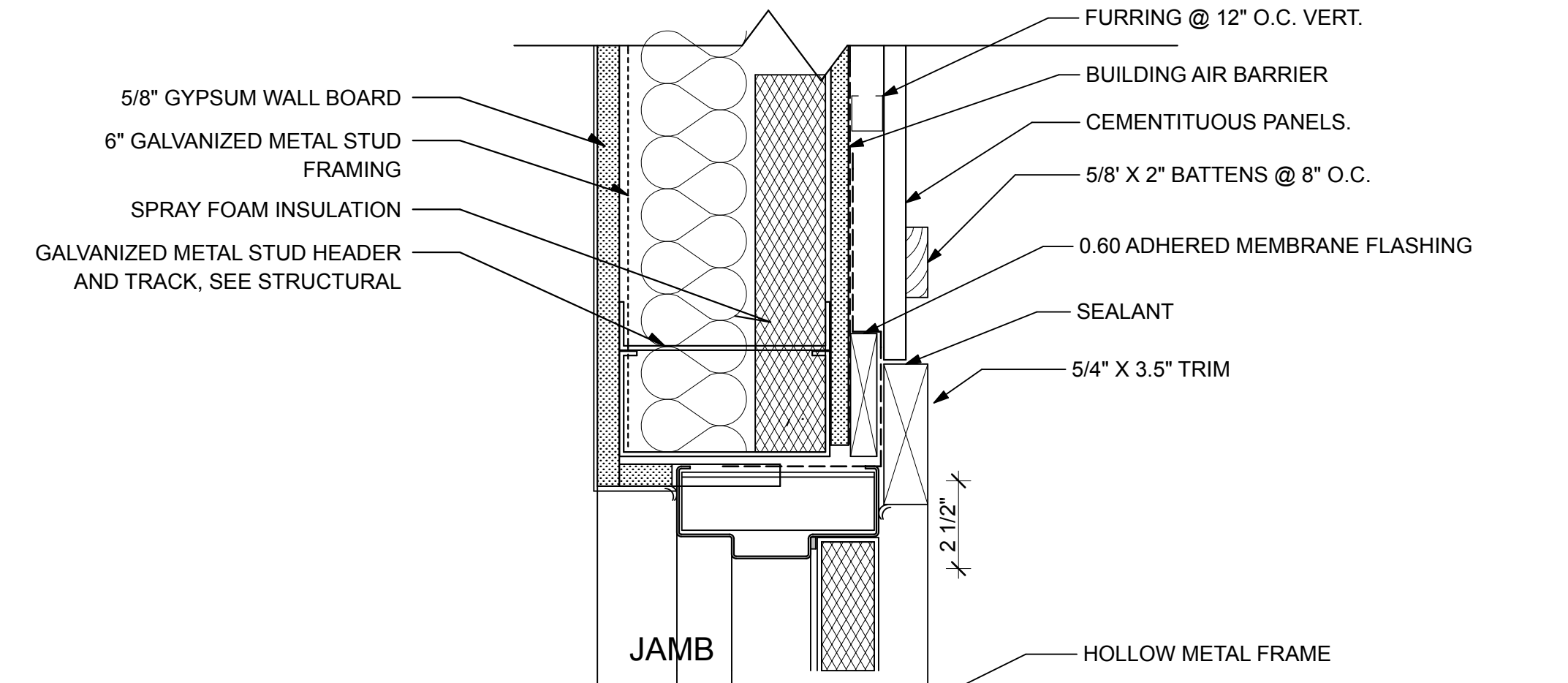
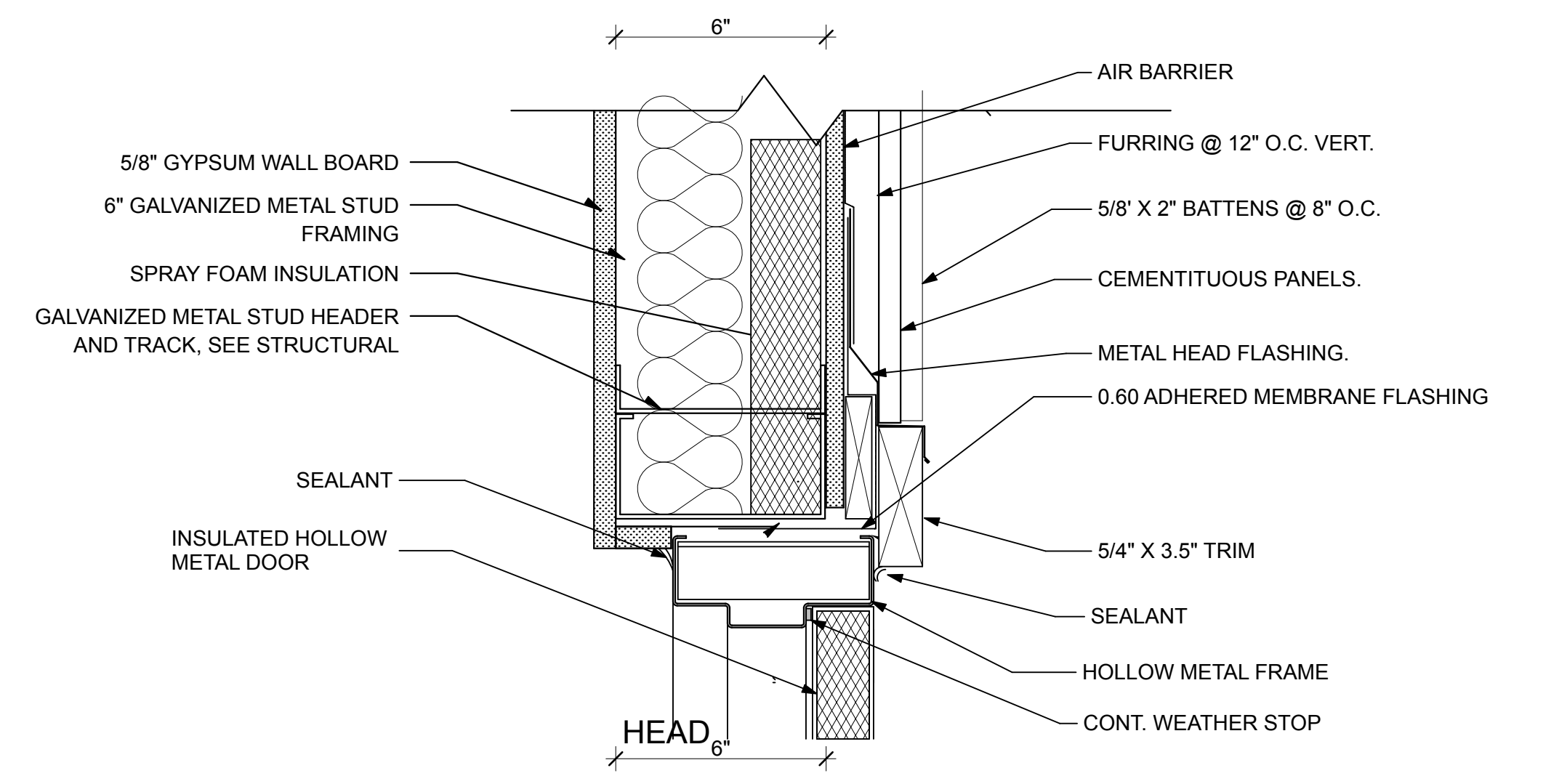
7 ALUM LOUVER DETAIL

SCALE: 3" = 1'-0"



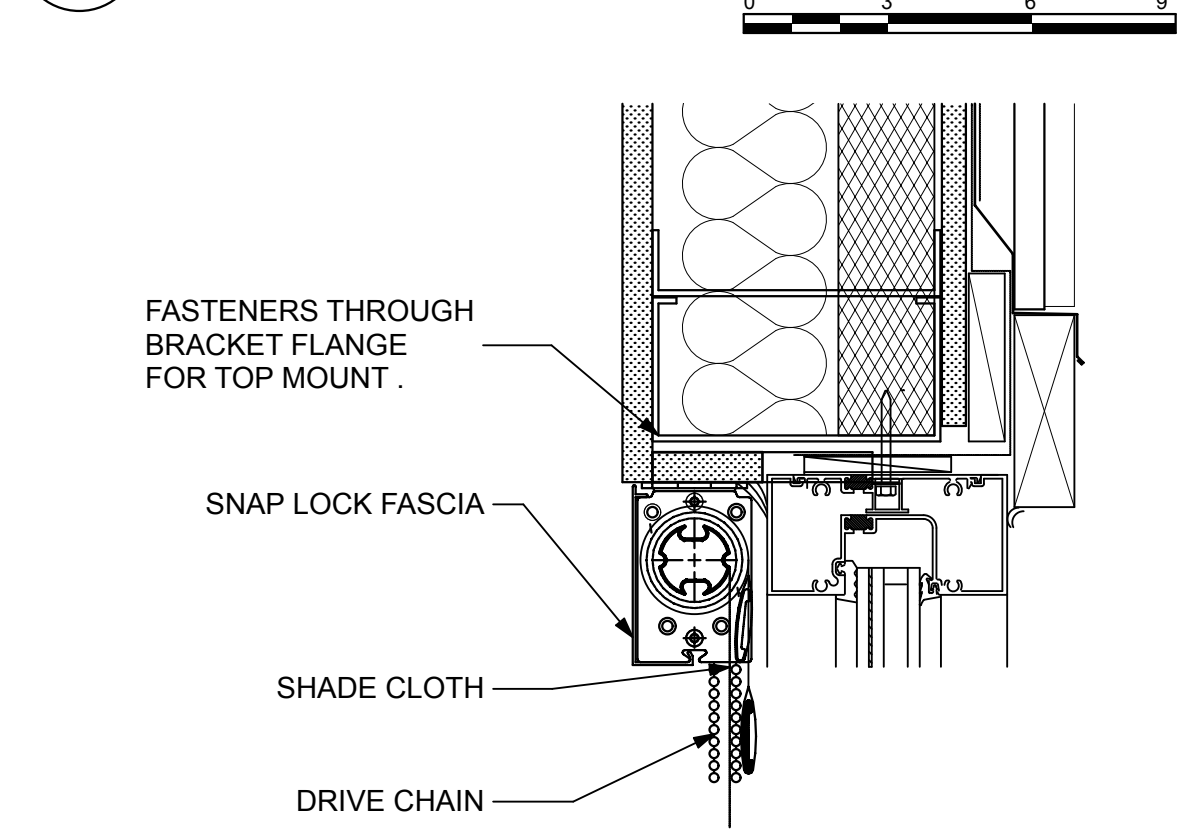
6 ALUM LOUVER DETAIL

SCALE: 3" = 1'-0"



3 EXT. DOOR DETAILS

SCALE: 3" = 1'-0"



5 WINDOW SHADE DETAIL

SCALE: 3" = 1'-0"

FINAL SUBMISSION
April 9, 2013

IF SHEET IS LESS THAN (30"x42") IT IS
A REDUCED PRINT; SCALE ACCORDINGLY

A603

BES DESIGN/BUILD 766 MIDDLE ST. FAIRHOPE, AL 36532 251-590-5778 ARCH. & ENGR. SEAL		NATURAL RESOURCES & ENVIRONMENTAL AFFAIRS SATISFACTORY TO DATE SAFETY DEPARTMENT SATISFACTORY TO DATE FIRE DEPARTMENT SATISFACTORY TO DATE PUBLIC WORKS SUPERVISOR SATISFACTORY TO DATE		P.W. DWG. NO. DRAWN BY RWC CHECKED BY BC SUPERVISOR WWB APPROVED DATE PUBLIC WORKS OFFICER		DEPARTMENT OF THE NAVY NAVAL FACILITIES ENGINEERING COMMAND PANAMA CITY, FLORIDA CONSTRUCT NAVAL BRANCH HEALTH CLINIC PANAMA CITY DOOR WINDOW DETAILS	
STATE OF FLORIDA ARCHITECT B. S. DESIGN/BUILD LLC No. 29795 OFFICE OF AUTHORIZATION		SIZE F HQMC PROJ. NO. 520-13-200 SCALE AS NOTED		NAV F&C DRAWING NO. N/A CONSTR. CONTR. NO. T.O.# SHEET 23 OF 32			