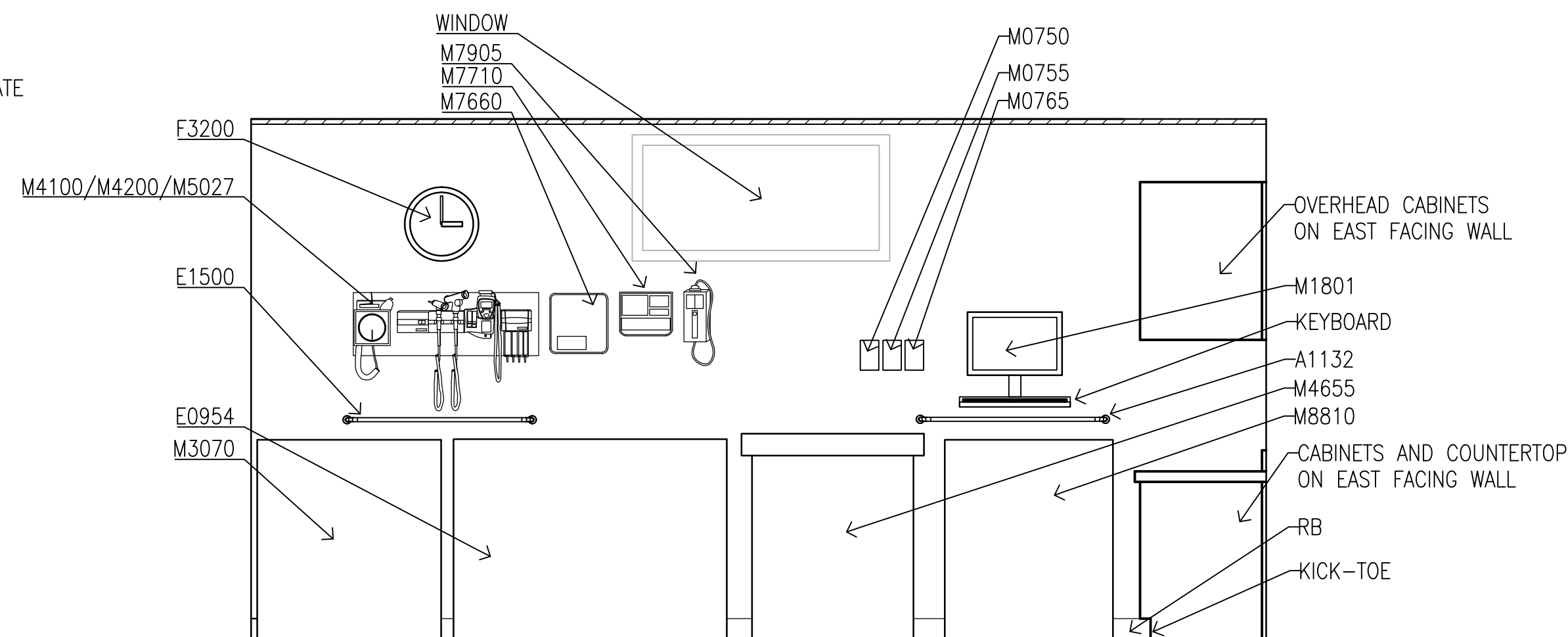
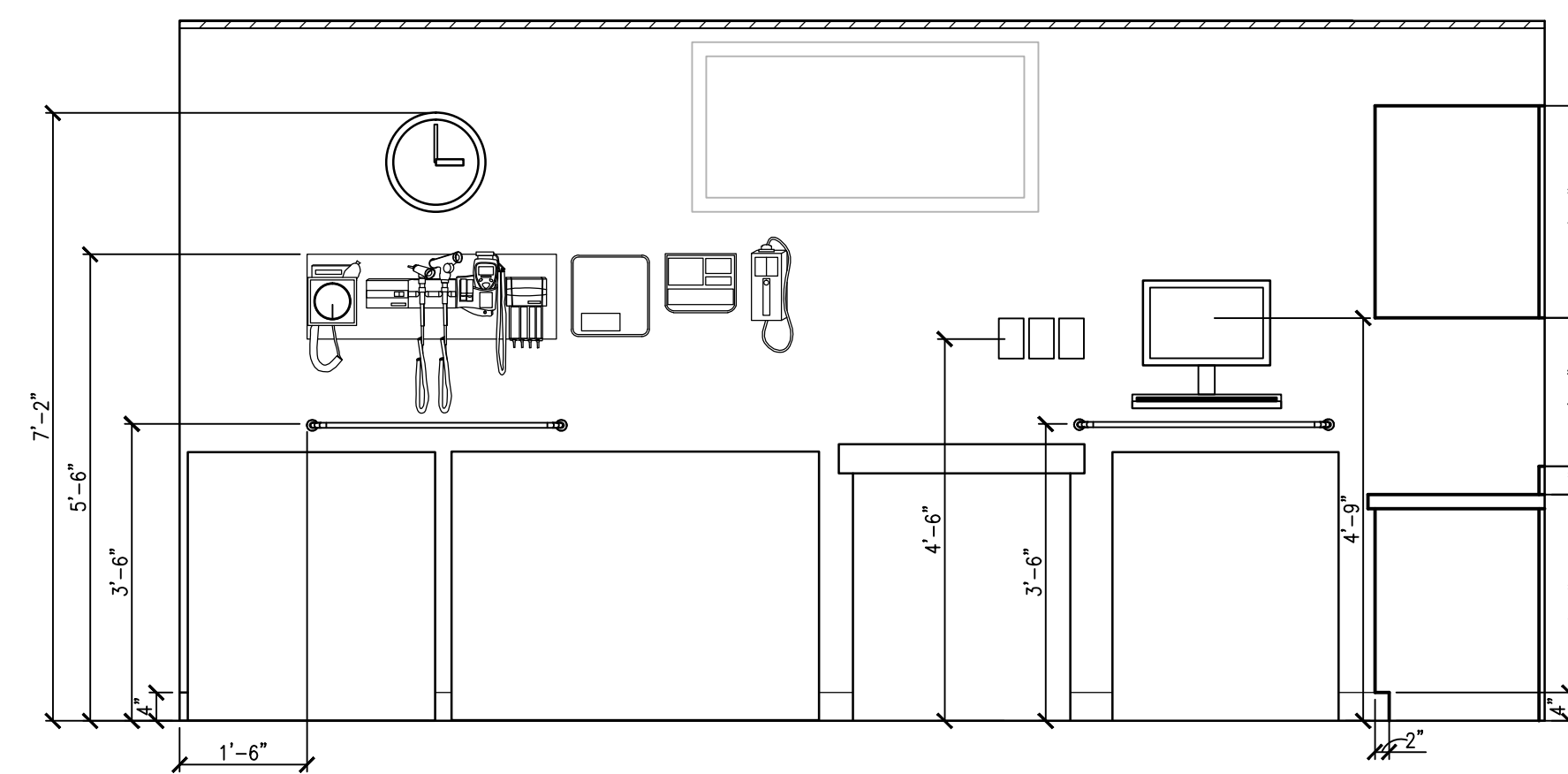


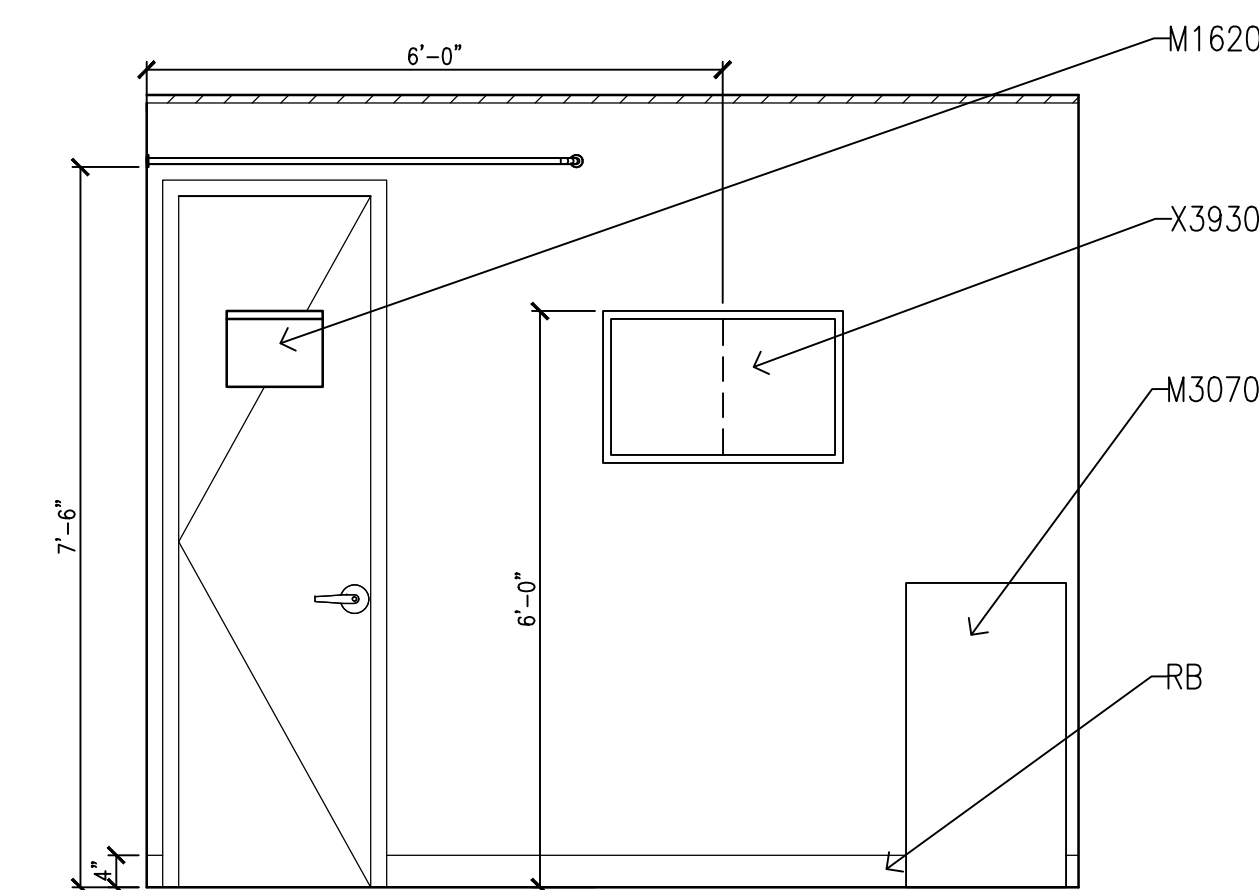
**1 ROOM 019: TREATMENT**  
A401 1/2" = 1'-0"



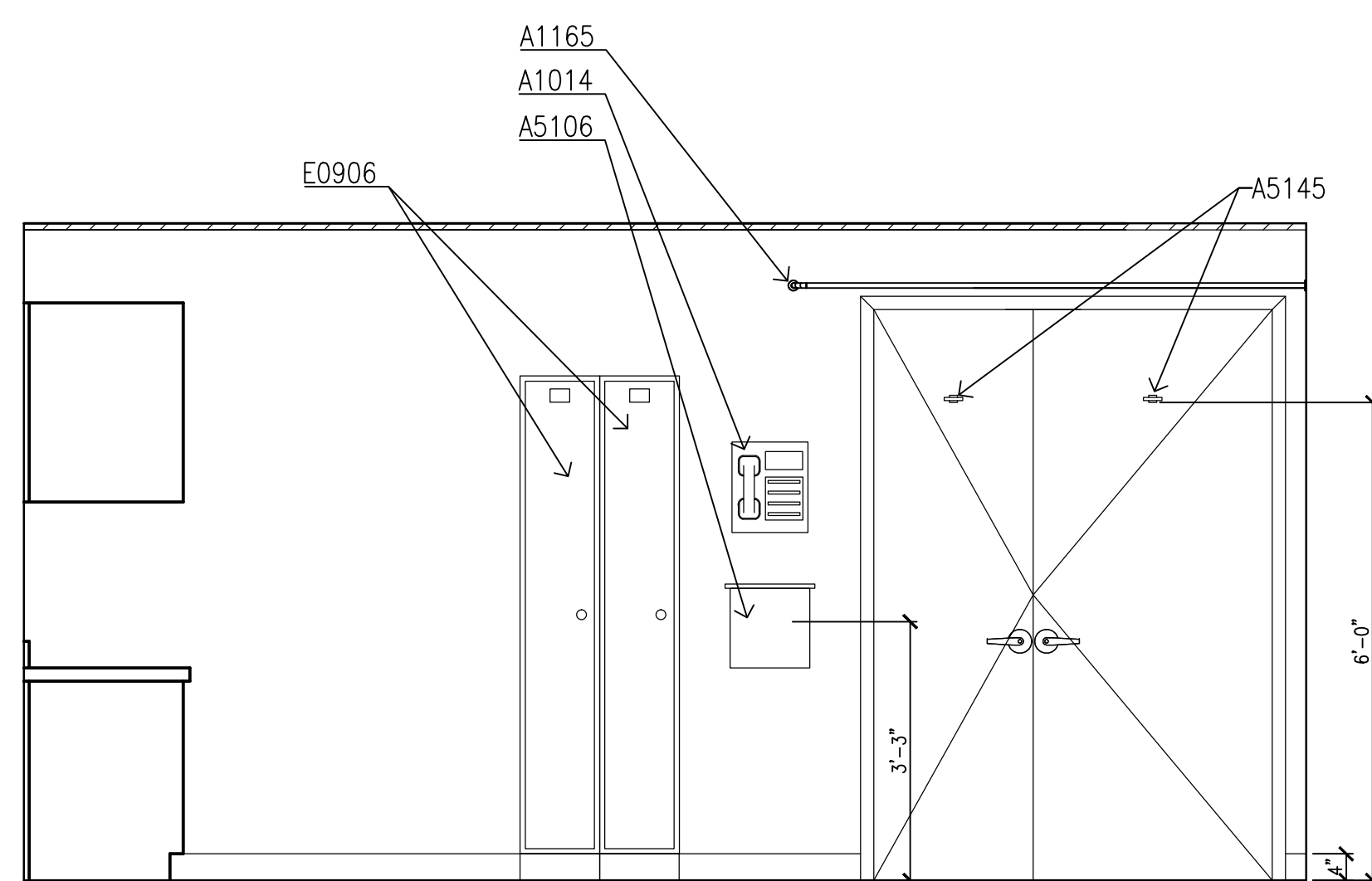
**2A ROOM 019: TREATMENT**  
A401 1/2" = 1'-0"



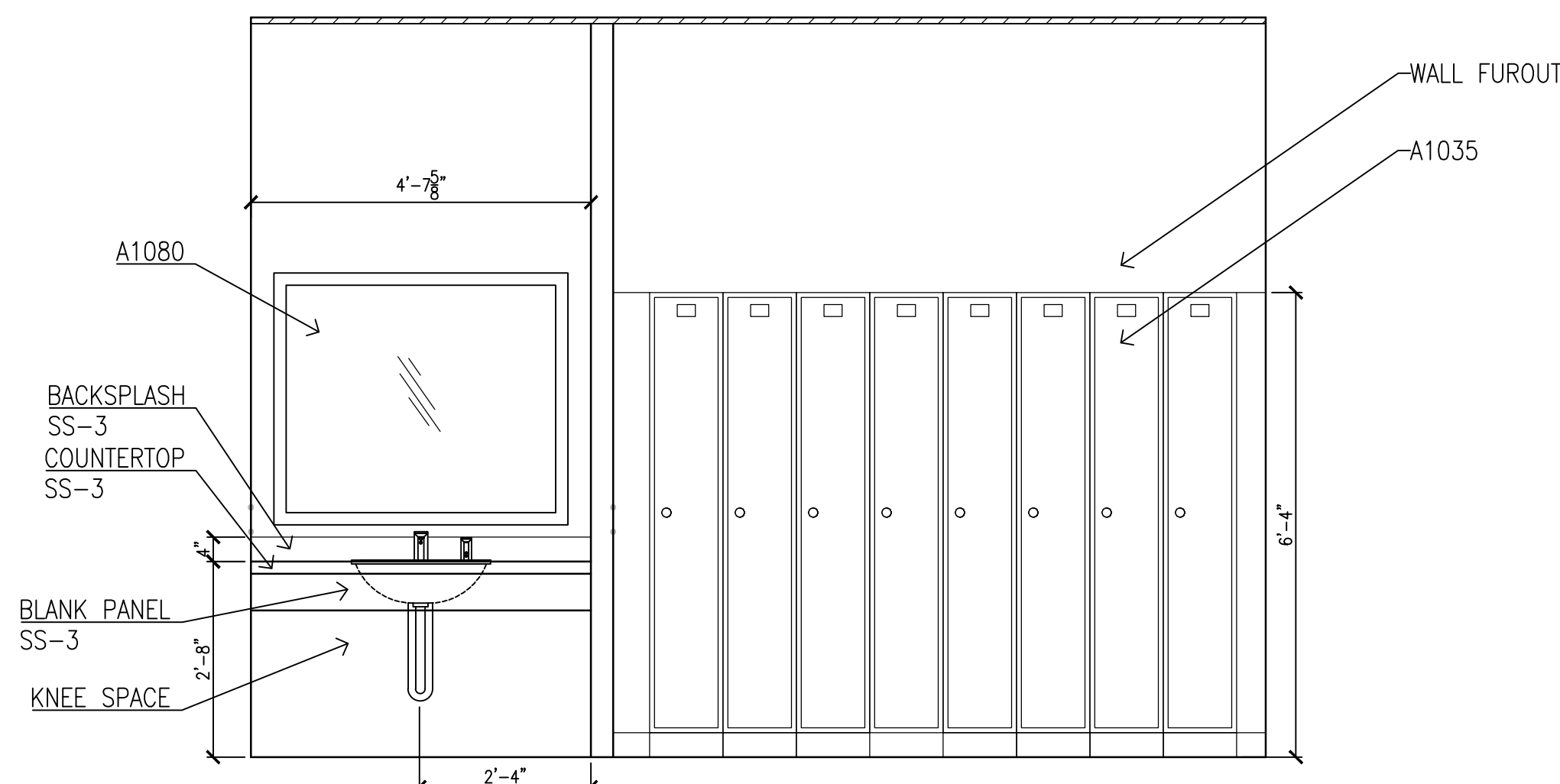
**2B ROOM 019: TREATMENT**  
A401 1/2" = 1'-0"



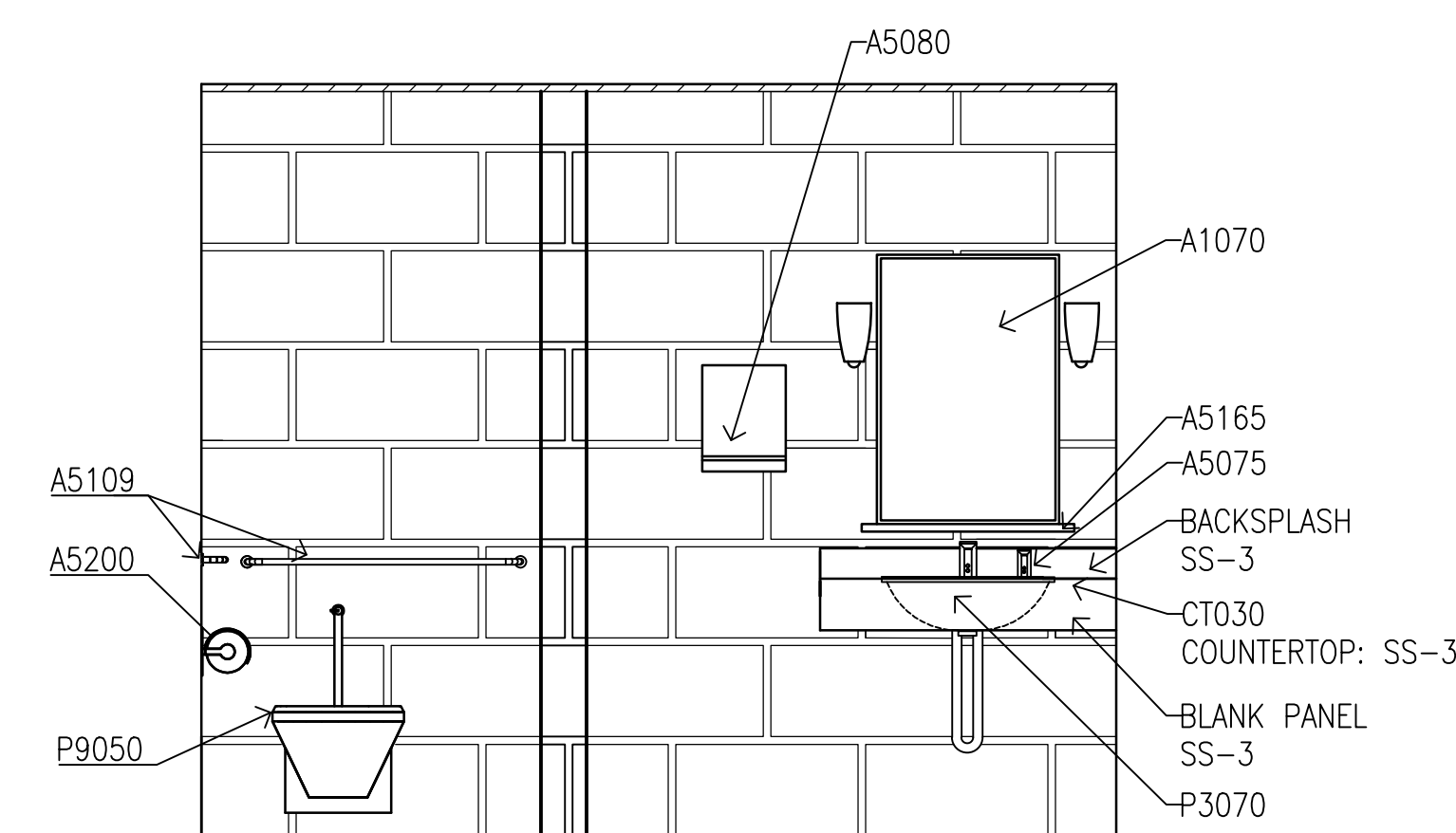
**3 ROOM 019: TREATMENT**  
A401 1/2" = 1'-0"



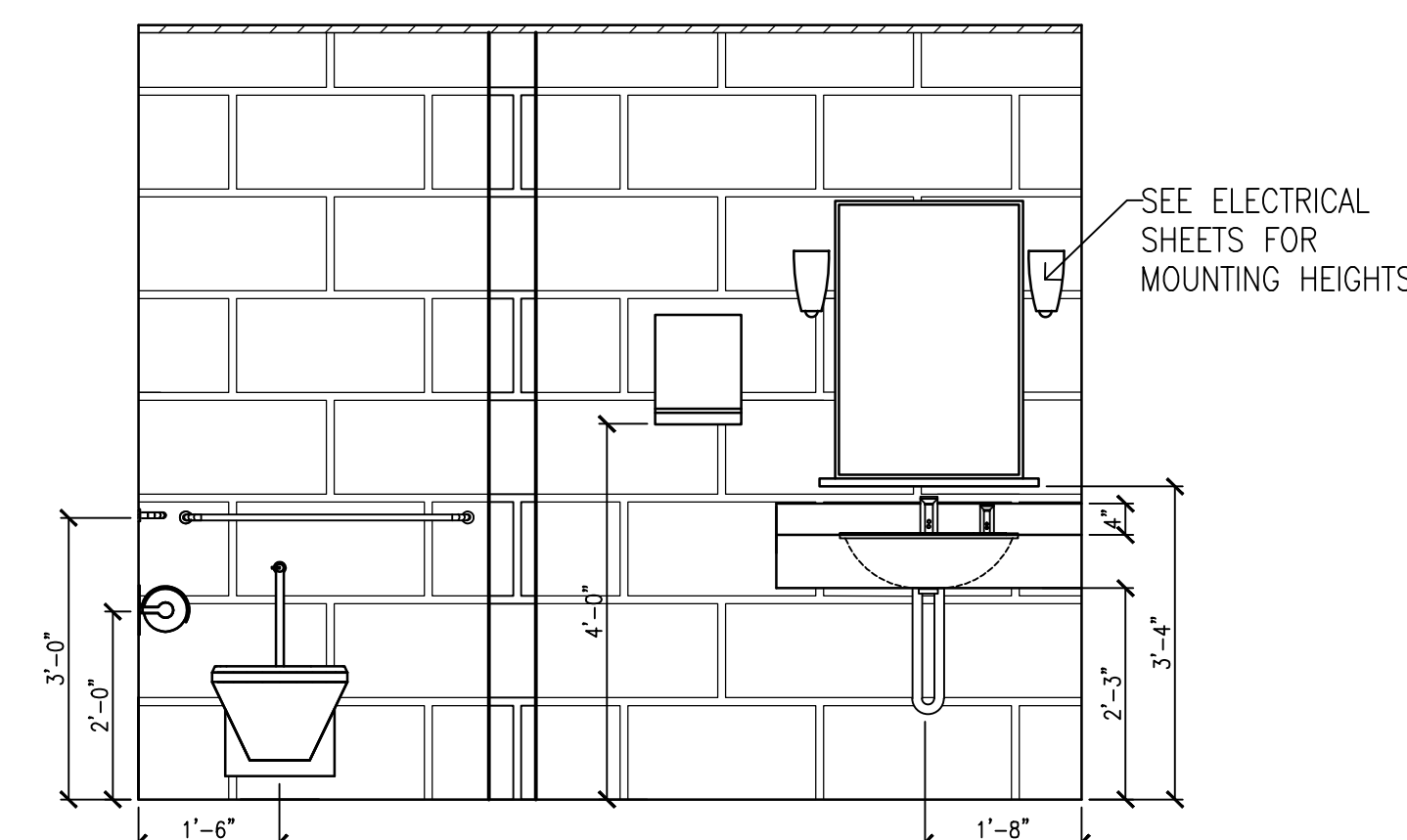
**4 ROOM 019: TREATMENT**  
A401 1/2" = 1'-0"



**5 SIMILAR-ROOM 022/23: LOCKER**  
A401 1/2" = 1'-0"  
NOTE: DESIGNED IN ACCORDANCE WITH UFAS



**6A SIMILAR-ROOM 024/025: TOILET**  
A401 1/2" = 1'-0"  
NOTE: DESIGNED IN ACCORDANCE WITH UFAS



**6B SIMILAR-ROOM 024/25: TOILET**  
A401 1/2" = 1'-0"  
NOTE: DESIGNED IN ACCORDANCE WITH UFAS

## GENERAL NOTES

- THE FINISH SCHEDULE IS LOCATED ON SHEET IN101.
- SEE SHEET A700 FOR EQUIPMENT SCHEDULE.
- EQUIPMENT SHOWN IS GENERAL PATIENT TREATMENT RELATED FOR THE BUILDING DESIGN COORDINATION. STANDARD OFFICE EQUIPMENT IS NOT ALWAYS SHOWN (I.E. PC'S, FAX, PRINTERS, ETC.)
- FURNITURE IS SHOWN FOR COORDINATION WITH EQUIPMENT AND GENERAL ROOM LAYOUTS ONLY.
- ALL PC'S SHOWN ON EQUIPMENT PLANS ARE FOR GENERAL LAYOUT PURPOSES AND PLANNING. IT DOES NOT INCLUDE: SIZE SHAPE, AND/OR NUMBER OF SCREENS TO BE USED.
- ALL COUNTERTOPS ARE TO BE SOLID SURFACE, SEE FINISH SCHEDULE FOR FINISH COLOR ON SHEET INT02.
- ALL DOORS AND DRAWERS ARE TO BE PLASTIC LAMINATE PANELS, SEE FINISH SCHEDULE FOR COLOR AND DETAIL INFORMATION FOR COORDINATION.

1' 0' 1' 2' 3' 4' 5'  
1/2"=1'-0"

FINAL SUBMISSION  
APRIL 9, 2013

IF SHEET IS LESS THAN (30"x42") IT IS  
A REDUCED PRINT; SCALE ACCORDINGLY

**A723**

|  |   |      |                |   |  |
|--|---|------|----------------|---|--|
| <br>766 MIDDLE ST., FAIRHOPE, AL 36532 251-990-5778<br>ARCH. & ENGR. SEAL<br>  | NATURAL RESOURCES & ENVIRONMENTAL AFFAIRS |      | P.W. DWG. NO.  |   |  |
|  | SAFETY DEPARTMENT                         |      | DRAWN BY AAC   |   |  |
|  | FIRE DEPARTMENT                           |      | CHECKED BY KAM |   |  |
|  | PUBLIC WORKS SUPERVISOR                   |      | SUPERVISOR     |   |  |
| APPROVED   |   | DATE |                | APPROVED  |  |
| PUBLIC WORKS OFFICER   |   |      |                | DATE  |  |
| DEPARTMENT OF THE NAVY<br>NAVAL SUPPORT ACTIVITY<br>PANAMA CITY, FLORIDA<br>CONSTRUCT NAVAL BRANCH HEALTH CLINIC<br>PANAMA CITY<br>INTERIOR ELEVATIONS |   |      |                | SIZE F<br>CODE IDENT. NO.<br>520-13-200<br>SCALE<br>MACC.                                 |  |
|  |   |      |                | NAVAL FACILITIES ENGINEERING COMMAND<br>N/A<br>CONSTR. CONTR. NO.<br>T.O.# SHEET 28 OF 32 |  |