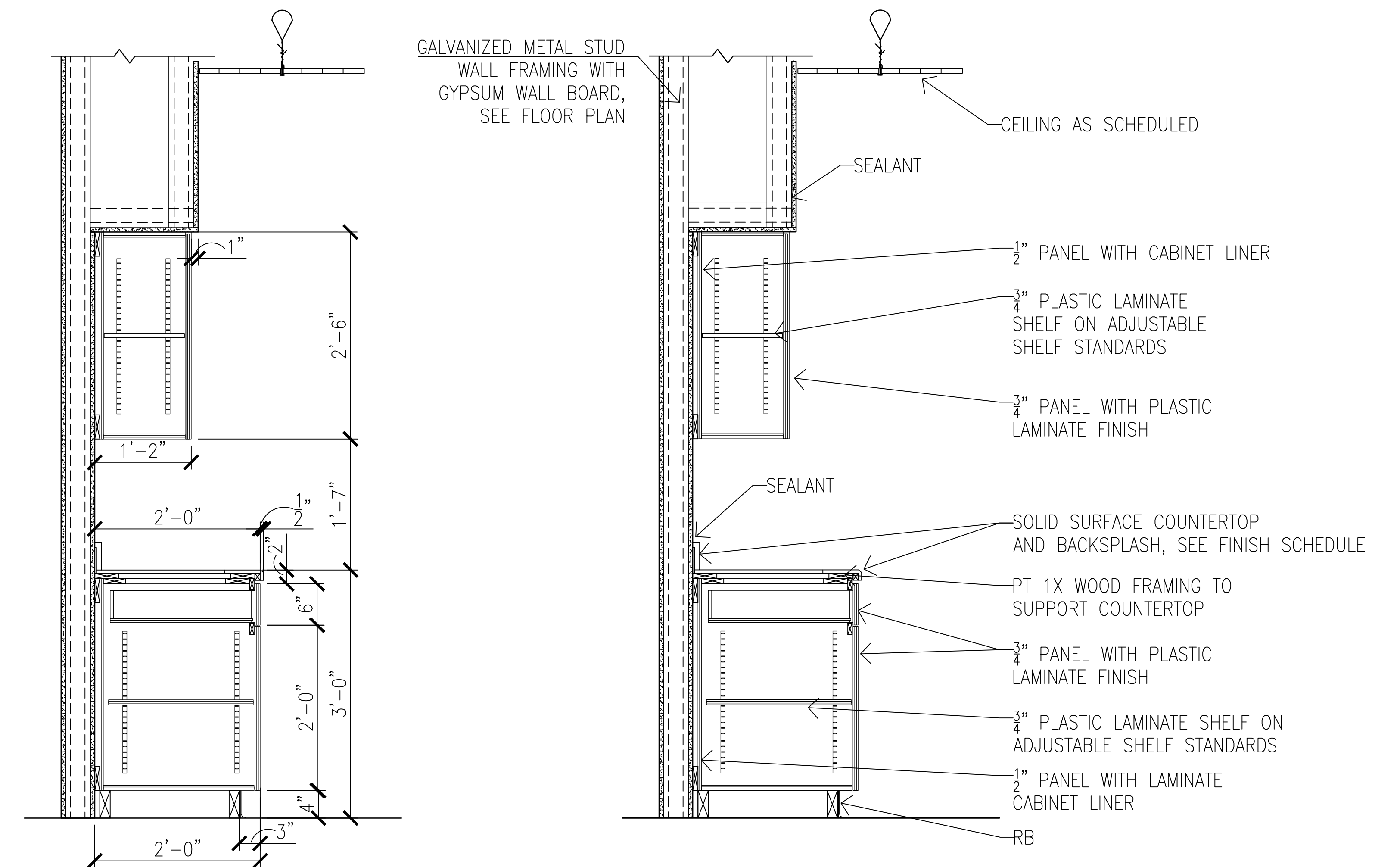
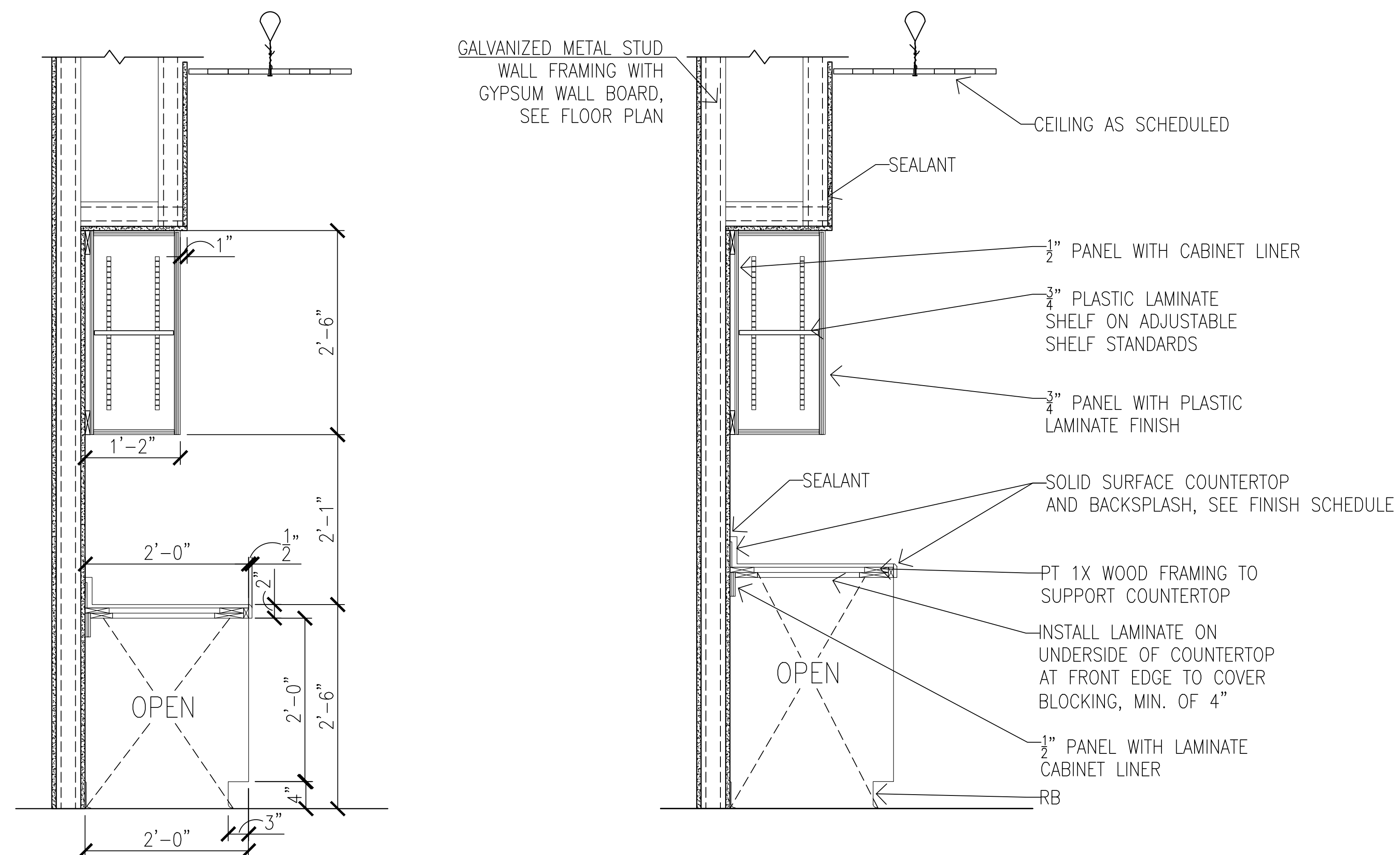


1 CASEWORK SECTION AT SINK
1" = 1'-0"



2 CASEWORK SECTION: TYP. DOOR/DRAWER
1" = 1'-0"



3 CASEWORK SECTION WHERE OPEN BELOW
1" = 1'-0"

CASEWORK NOTES

- ALL COUNTER TOPS AND BACKSPLASHES ARE TO BE SOLID SURFACE WITH 1/8" CHAMFER AT EXPOSED EDGES, SEE FINISH SCHEDULE FOR COLOR.
- ALL CABINET BODIES, DOORS AND DRAWERS TO BE PLASTIC LAMINATE PANELS, SEE FINISH SCHEDULE FOR COLOR.
- ALL ADJUSTABLE SHELVES TO PLASTIC LAMINATE ON ADJUSTABLE SHELF STANDARDS.
- ALL CABINET PULLS TO BE 3" RECESSED PULLS, U.N.O.
- PROVIDE BLOCKING IN WALL FOR ATTACHMENT OF CABINETS.

1' 6" 0' 1' 2'
1" = 1'-0"

FINAL SUBMISSION
APRIL 9, 2013

IF SHEET IS LESS THAN (30"x42") IT IS
A REDUCED PRINT; SCALE ACCORDINGLY

A751

 766 MOBILE ST., FARMHOPPE, AL 36532 251-990-5778 ARCH. & ENGR. SEAL 	NATURAL RESOURCES & ENVIRONMENTAL AFFAIRS		P.W. DWG. NO.		DEPARTMENT OF THE NAVY NAVAL SUPPORT ACTIVITY PANAMA CITY, FLORIDA	
	SAFETY DEPARTMENT		DRAWN BY AAC		CONSTRUCT NAVAL BRANCH HEALTH CLINIC PANAMA CITY	
	FIRE DEPARTMENT		CHECKED BY RWC		CASEWORK SECTIONS	
	PUBLIC WORKS SUPERVISOR		SUPERVISOR		NAVFAC DRAWING NO. N/A	
APPROVED		DATE		SIZE F		CODE IDENT. NO.
PUBLIC WORKS OFFICER				FROM PROJ. NO. 520-13-200		CONSTR. CONTR. NO.
SCALE		MACC.		T.O.#		SHEET 31 OF 32